

Digital manifold

testo 557 - The manifold for commissioning, service and maintenance

Calculate superheating and subcooling simultaneously

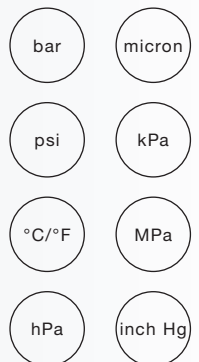
Integrated vacuum measurement supports the evacuation of systems

Temperature-compensated tightness test

Automatic ambient pressure measuring

40 refrigerants are stored in the instrument

4-way valve block for fast and efficient work



The digital manifold testo 557 is a robust tool for all measurements on a refrigeration system or a heat pump. The manifold disposes of a robust 4-way metal valve block with additional connection options, for example for a vacuum pump or refrigerant bottle. This provides a definite advantage in the handling and enables fast and efficient service, maintenance and commissioning. The solid housing reliably protects the testo 557 against any strain in everyday work. The integrated vacuum measurement enables reliable

measurement results when evacuating refrigeration systems and heat pumps. Especially the automatic heat pump mode, which makes switching over the refrigerant hoses superfluous, the temperature-compensated tightness test function and the automatic ambient pressure compensation, make the work more safe, efficient and precise than ever before.

Technical data / Accessories

testo 557

Digital manifold testo 557 incl. batteries and calibration protocol

Part no. 0563 5571

£ 313.00



testo 557 Set

testo 557-2 set, the digital manifold for commissioning, service and maintenance, 4-way valve block, integrated vacuum measurement, incl. 2 clamp probes, transport case, calibration protocol and batteries

Part no. 0563 5572

£ 422.00



General technical data

| | |
|--------------------------------------|--|
| Operating temperature | -20 to +50 °C |
| Storage temperature | -20 to +60 °C |
| Battery life | Approx. 150 h (without illumination) |
| Dimensions | 280 x 135 x 75 mm |
| Weight | 1200 g |
| Protection class | IP42 |
| Print media | CFC, HFC, N, H ₂ O, CO ₂ |
| Refrigerant in the instrument | R12, R22, R123, R134a, R227, R290, R401A, R401B, R402A, R402B, R404A, R406A, R407A, R407C, R408A, R409A, R410A, R411A, R413A, R414B, R416A, R417A, R420A, R421A, R421B, R422A, R422B, R422D, R424A, R427A, R434A, R437A, R438A, R502, R503, R507, R600, R600a, R718 (H ₂ O), R744 (only in the permitted measurement range up to 50 bar), R1234yf (display: T8 for testo 557) Refrigerant update possible (by Testo service) |
| Warranty | 2 years |

Sensor types

| | Pressure | Temperature | Vacuum |
|---|----------------------------------|-------------------|-----------------------------|
| Meas. range | 50 bar | -50 to +150 °C | - |
| Meas. range (rel.) | - | - | -1 bar ... 0 bar |
| Accuracy (at 22 °C) | 0.5% fs (±1 Digit) | ±0.5°C (±1 Digit) | 1% fs |
| Resolution | 0.01 bar / 0.1 psi | 0.1 °C/0.1 °F | 1 hPa / 1 mbar / 500 micron |
| Probe connections | 3 x 7/16" - UNF + 1 x 5/8" - UNF | 2 x plug-in (NTC) | - |
| Overload rel. (LP/HP) | 52 bar / 52 bar | - | - |
| Low pressure rel. (LP) High pressure rel. (hP) | 50 bar / 50 bar | - | - |

Accessories





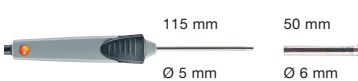
Part no. £

Accessories for measuring instrument

| | | |
|---|-----------|-------|
| Transport case for testo 550 and accessories* | 0516 5505 | 74.66 |
|---|-----------|-------|

* also suitable for testo 557

Probes

| Probe type | Dimensions Probe shaft/probe shaft tip | Measuring range | Accuracy | Part no. £ |
|---|---|---|---|--------------------------------|
| Air probes | | | | |
| Efficient, robust NTC air probe |  | -50 to +125 °C | ±0.2 °C (-25 to +80 °C) ±0.4 °C (remaining range) | 0613 1712 59.06 |
| Surface probes | | | | |
| Clamp probe for measurement on pipes for diameter 6 to 35 mm, NTC |  | -40 to +125 °C | ±1 °C (-20 to +85 °C) | 0613 5505 43.47 |
| Pipe wrap probe with Velcro for pipe diameter to max. 75 mm, Tmax. +75 °C, NTC, Fixed cable 1.5 m |  | -50 to +70 °C | ±0.2 °C (-25 to +70 °C) ±0.4 °C (-50 to -25.1 °C) | 0613 4611 78.33 |
| Pipe clamp probe (NTC) for pipe diameters 5 to 65 mm, Fixed cable 1.2 m |  | -50 ... +120 °C | ±0.2 °C (-25 ... +80 °C) | 0613 5605 157.00 |
| Waterproof NTC surface probe for flat surfaces, Fixed cable 1.2 m |  | -50 to +150 °C Long-term meas. range +125 °C, short-term +150 °C (2 minutes) | ±0.5% of mv (+100 to +150 °C) ±0.2 °C (-25 to +74.9 °C) ±0.4 °C (remaining range) | 0613 1912 63.67 |



The suspension hook guarantees secure attachment of the digital manifold during measurement.



Clamp probe for pipes from Ø 6 mm to Ø 35 mm, NTC



Large, backlit display

0981 3581 20/cw/A/01.2014

Subject to change without notice.
All prices are net and valid until 31.12.2014.
Shipping costs & VAT not included.



Testo Limited
Newman Lane
ALTON, HAMPSHIRE
GU34 2UR
Phone: 01420 544 433
Fax: 01420 544 434
Email: info@testo.co.uk