

Lobby Smoke Damper (LSD)

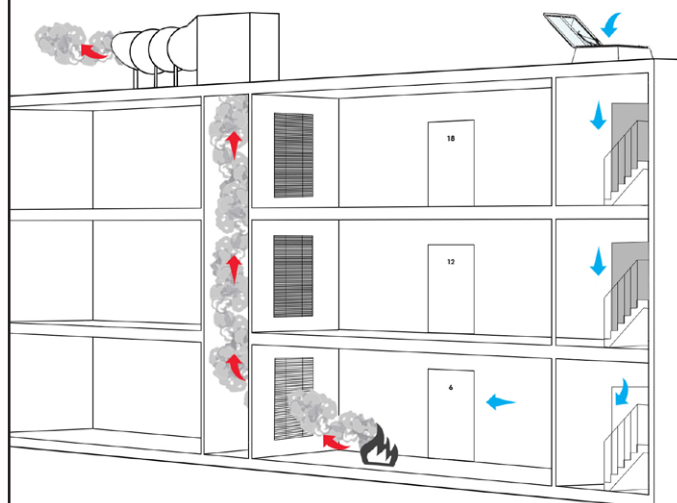
The fire and smoke damper has been designed to satisfy smoke ventilation applications and is particularly suited for fire rated mechanical smoke extraction shafts in multi-storey buildings.

The dampers have been fire tested to the latest European Fire Damper Test Standard (EN1366-2). They have achieved a 2 hour fire resistance performance to ES120.

The units are fitted in the wall between a lobby or corridor into a vertical smoke shaft. The top of the damper should be as high as possible, but can be fitted at the same height as the head of the architrave.



Example of application in case of fire:



The damper opens and fan starts. The smoke and gas is drawn up and out via the exhaust duct.

Fire door opens and the top of stair NSHEV opens to bring fresh air in.

Resulting in a safe smoke-free area with clear escape routes.

Features

- Longevity cycle tested for 100,000 fully open closed operations.
- Able to respond to smoke alarm inputs.
- 24 V ac/dc Belimo BE motor open / motor closed drive.
- Volt Free Monitoring contacts.
- Drive is on lobby side, hidden from view behind painted cover plate and can be manually operated if needed.
- Easy access to drive by simple removal of cover plate behind grille.
- Simple to install and audit.

