

EXPO LED Floodlights



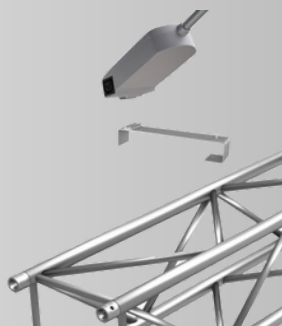
These powerful LED Display Floodlights are perfect for illuminating banners, exhibition walls, pop-up walls or an entire exhibition stand. Due to the wide range of mounting clips, the Display Floods can be mounted on any stand construction system.

Use the same Display Floodlight on different types of stand construction systems. A wide range of mounting clips are available, allowing the same Display Floods to be used on a traditional wooden stand construction, a pop-up wall, or a modular stand construction system such as Aluvision, beMatrix, Octanorm, Syma, Modul, etc. The luminaires can also be mounted on a truss using special clips.

All Display Floodlights are available in colour temperatures ranging from 3000K (warm white), 4000K (neutral white) or 5700K (daylight white) with two new models now available with an integrated tri-colour switch to change the LED colour temperature from 3000K to 4000K or 5700K. In this way, the floodlights can be applied depending on the atmosphere and appearance of the exhibition stand.

There is a wide range of mounting clips available for EXPO Display Floods for mounting to any stand construction system allowing the same Display Floods to be used on a traditional wooden stand construction, pop-up walls, truss or modular stand construction systems.

- Aluvision
- beMatrix
- Octanorm
- Syma
- Modul
- Panel
- Truss
- Clamp
- Screw Fix



The bases of all models of EXPO LED Floodlights are manufactured from aluminum making them robust and durable for frequent use. The bases have built in drivers with either C8-C7 (EXPO20) or C14-C13 (EXPO25/30/50/70) mains power connections. Thanks to the integrated input and output connections multiple EXPO Floodlights can easily be linked together using connection cables that are available in various lengths.

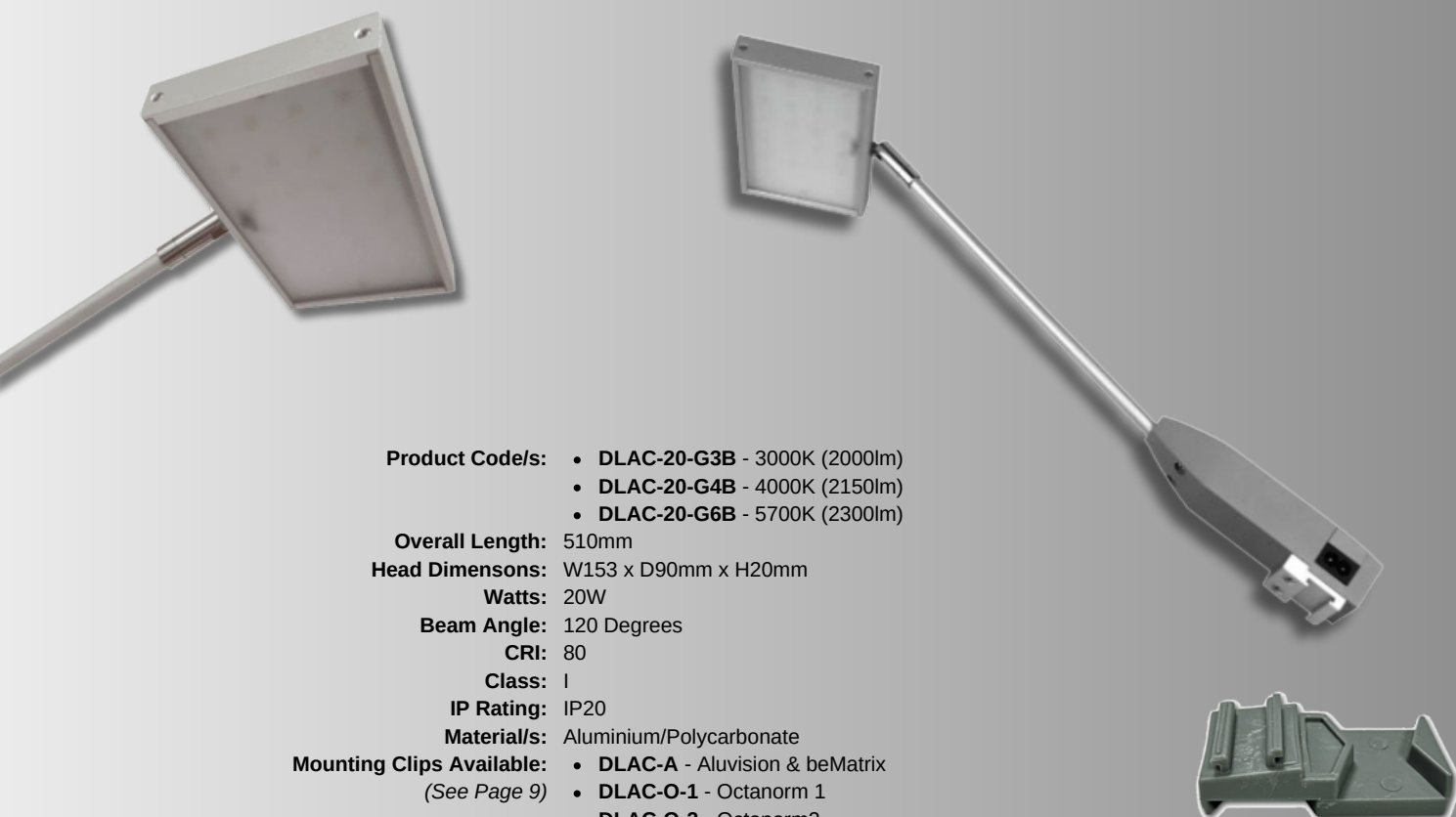
Handy carry bags and heavy duty plastic transport cases with foam inserts are available for the safe and easy transport of all models of EXPO Floodlight with extra space for mounting clips and cables.

EXPO20

EXPO20 LED Display Flood is sleek, modern and stylish. Ideally suited for a low exhibition wall or on a pop-up wall. This powerful 20W LED display spot gives a light output of up to 2300 lumens and can be interconnected with multiple Display Floods using connection cables (IEC C8 – C7). EXPO20 is supplied as standard with a clip for, among other things, a pop-up wall. This makes it the ideal lamp for illuminating temporary pop-up walls. Handy transport boxes and compact bags are available so the lights can be transported easily and safely. An ideal combination if you sell pop-up walls to your customers. The slim model produces a surprising amount of light and can therefore also be used very well on exhibition walls.

WHAT'S INCLUDED?

- 1 x EXPO20 20W LED Floodlight.
- 1 x C7 Mains Lead.
- 1 x Pop Up Clip for Pop Up Stands



- Product Code/s:**
- **DLAC-20-G3B** - 3000K (2000lm)
 - **DLAC-20-G4B** - 4000K (2150lm)
 - **DLAC-20-G6B** - 5700K (2300lm)

Overall Length: 510mm

Head Dimensions: W153 x D90mm x H20mm

Watts: 20W

Beam Angle: 120 Degrees

CRI: 80

Class: I

IP Rating: IP20

Material/s: Aluminium/Polycarbonate

- Mounting Clips Available:**
- (See Page 9)
- **DLAC-A** - Aluvision & beMatrix
 - **DLAC-O-1** - Octanorm 1
 - **DLAC-O-2** - Octanorm2
 - **DLAC-M** - Modul & Syma
 - **DLAC-C10** - 10cm Screwfix Clip
 - **DLAC-C17** - 17cm Screwfix Clip
 - **DLAC-P16** - 16mm Panel Mounting Clip
 - **DLAC-P19** - 19mm Panel Mounting Clip
 - **DLAC-P22** - 22mm Panel Mounting Clip
 - **DLAC-TC30** - 30cm Truss Hook
 - **DLAC-TC40** - 40cm Truss Hook
 - **DLAC-PC** - Panel & Pipe Clamp (50mm Max')

Tilt Angle: 90 Degrees

Rotation: 350 Degrees

Finish: Silver

Input Power: 110-240VAC

Connection/s: Built-in IEC C8 input + IEC C7 output

Maximum Linkable: 15

Nett Weight: 570g

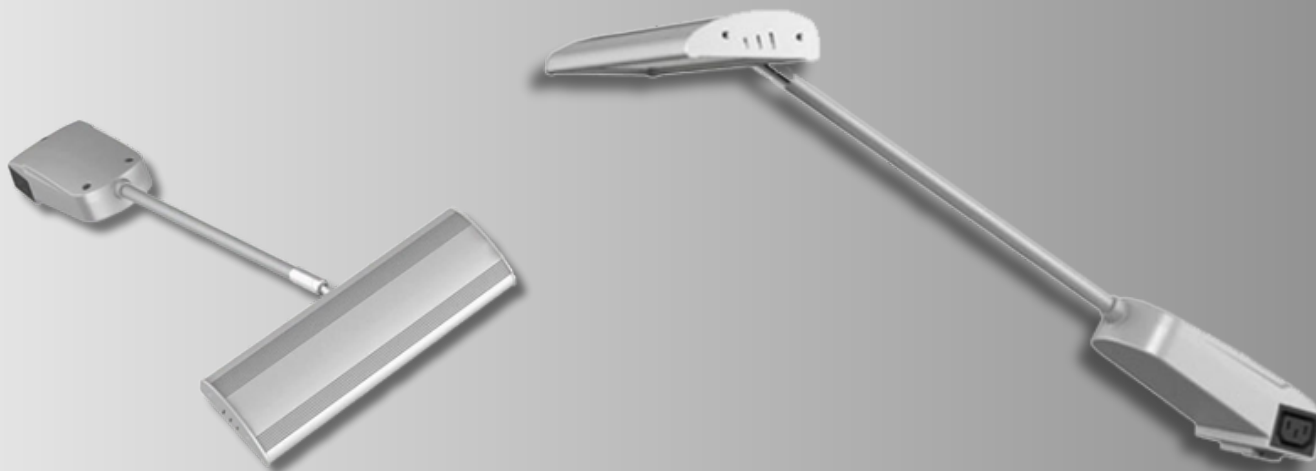
- Optional Extra's:**
- (See Pages 10 & 11)
- **DLAC-C8-C7-200** - 2m IEC C8 to C7 Mains Lead
 - **DLAC-A7.6** - 7.6 Degree Angled Clip
 - **DLAC-BR** - Mounting Clip with Safety Hook
 - **DLAC-S** - 30cm Safety Cable
 - **DLAB-BB** - Transport Bag for 2 x EXPO20
 - **DLAB-20** - Transport Case for 6 x EXPO20

EXPO25

The slim and classic EXPO25 LED Floodlight provides a wide spread of light. The LEDs produce a light output of up to 2750 lumens. EXPO25 Flood is suitable for placement up to a stand height of 3 metres. EXPO25 is characterised by its wide head with 50 integrated LEDs that ensure equal spread of the light. The base houses the power connection with the possibility of interconnection. Using the various mounting clips, EXPO25 can be applied to all kinds of stand systems.

WHAT'S INCLUDED?

- 1 x EXPO25 25W LED Floodlight.
- 1 x C13 IEC Mains Lead.



- Product Code/s:**
- **DLAM-25-G3B** - 3000K (2300lm)
 - **DLAM-25-G4B** - 4000K (2150lm)
 - **DLAM-25-G6B** - 5700K (2300lm)

Overall Length: 610mm

Head Dimensions: W234 x D75mm x H25mm

Watts: 25W

Beam Angle: 120 Degrees

CRI: 80

Class: I

IP Rating: IP20

Material/s: Aluminium/Polycarbonate

Mounting Clips Available:

- **DLAC-A** - Aluvision & beMatrix

(See Page 9)

- **DLAC-O-1** - Octanorm 1

- **DLAC-O-2** - Octanorm2

- **DLAC-M** - Modul & Syma

- **DLAC-C10** - 10cm Screwfix Clip

- **DLAC-C17** - 17cm Screwfix Clip

- **DLAC-P16** - 16mm Panel Mounting Clip

- **DLAC-P19** - 19mm Panel Mounting Clip

- **DLAC-P22** - 22mm Panel Mounting Clip

- **DLAC-TC30** - 30cm Truss Hook

- **DLAC-TC40** - 40cm Truss Hook

- **DLAC-PC** - Panel & Pipe Clamp (50mm Max')

Tilt Angle: 90 Degrees

Rotation: 350 Degrees

Finish: Silver

Input Power: 110-240VAC

Connection/s: Built-in IEC C14 input + IEC C13 output

Maximum Linkable: 8

Nett Weight: 900g

Optional Extra's:

- **DLAC-C14-C13-150** - 1.5m IEC C14 to C13 Mains Lead

(See Pages 10 & 11)

- **DLAC-C14-C13-200** - 2m IEC C14 to C13 Mains Lead

- **DLAC-C14-C13-300** - 3m IEC C14 to C13 Mains Lead

- **DLAC-A7.6** - 7.6 Degree Angled Clip

- **DLAC-BR** - Mounting Clip with Safety Hook

- **DLAC-S** - 30cm Safety Cable

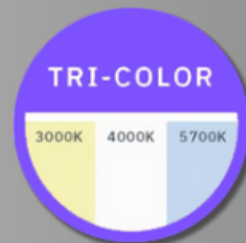
- **DLAB-8H** - Transport Case for 8 x EXPO25

EXPO30T - TRI-COLOUR

In terms of design, EXPO30 Display Floodlight blends perfectly with any style. This 30W flood gives a light output up to 3700 lumens. The floodlight is suitable for mounting at standard stand heights up to about 4 metres. EXPO30 is manufactured from aluminium and features a base integrating the LED driver and power connection. The stylish head houses 36 SMD LEDs that are available in three colour temperatures. EXPO30 is one of the most popular spotlights thanks to the various mounting clips available for the various stand construction systems. The input and output of power in the spotlight enables a whole series to be linked together, with only 1 power connection.

WHAT'S INCLUDED?

- 1 x EXPO30T 30W Tri Colour LED Floodlight.
- 1 x C13 IEC Mains Lead.



- Product Code/s:** • **DLAL-30T-G346B** - 3000K/4000K/5700K (3300lm)
- Overall Length:** 610mm
- Head Dimensions:** W234 x D75mm x H25mm
- Watts:** 30W
- Beam Angle:** 120 Degrees
- CRI:** 80
- Class:** I
- IP Rating:** IP20
- Material/s:** Aluminium/Polycarbonate
- Mounting Clips Available:**
- **DLAC-A** - Aluvision & beMatrix
 - **DLAC-O-1** - Octanorm 1
 - **DLAC-O-2** - Octanorm2
 - **DLAC-M** - Modul & Syma
 - **DLAC-C10** - 10cm Screwfix Clip
 - **DLAC-C17** - 17cm Screwfix Clip
 - **DLAC-P16** - 16mm Panel Mounting Clip
 - **DLAC-P19** - 19mm Panel Mounting Clip
 - **DLAC-P22** - 22mm Panel Mounting Clip
 - **DLAC-TC30** - 30cm Truss Hook
 - **DLAC-TC40** - 40cm Truss Hook
 - **DLAC-PC** - Panel & Pipe Clamp (50mm Max')
- Tilt Angle:** 90 Degrees
- Rotation:** 350 Degrees
- Finish:** Silver
- Input Power:** 110-240VAC
- Connection/s:** Built-in IEC C14 input + IEC C13 output
- Maximum Linkable:** 8
- Nett Weight:** 950g
- Optional Extra's:**
- **DLAC-C14-C13-150** - 1.5m IEC C14 to C13 Mains Lead
 - **DLAC-C14-C13-200** - 2m IEC C14 to C13 Mains Lead
 - **DLAC-C14-C13-300** - 3m IEC C14 to C13 Mains Lead
 - **DLAC-A7.6** - 7.6 Degree Angled Clip
 - **DLAC-BR** - Mounting Clip with Safety Hook
 - **DLAC-S** - 30cm Safety Cable
 - **DLAB-8** - Transport Case for 8 x EXPO30 & EXPO50

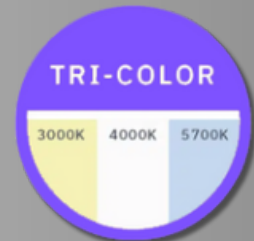
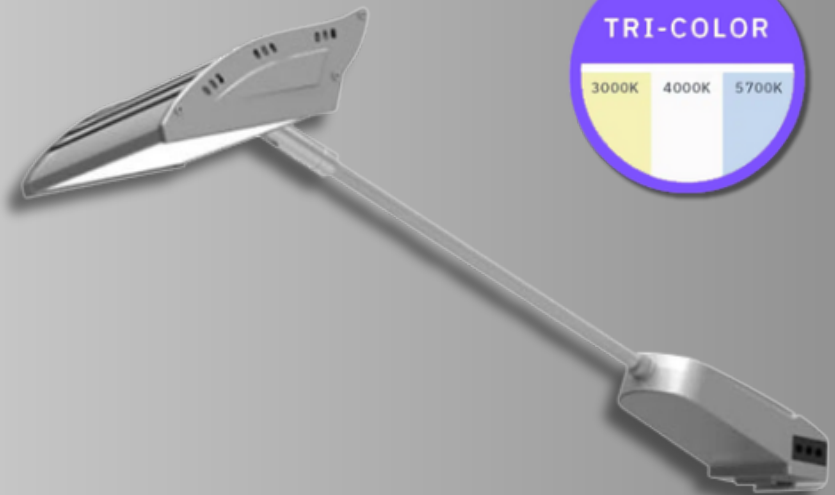
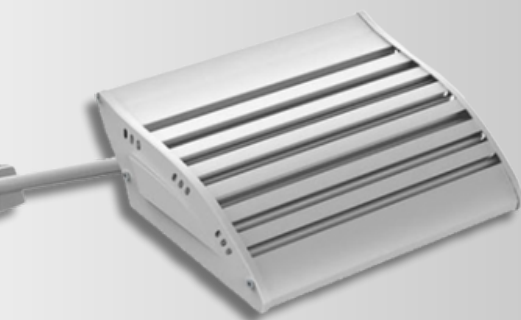


EXPO50T - TRI-COLOUR

The powerful EXPO50 LED Floodlight provides a light output of up to 5000 lumens. This makes this spotlight suitable for placement at a height of around 5 metres. EXPO50 floodlight is manufactured from robust aluminium and features a base that houses the driver and power connections. The long arm ensures even distribution of light on the wall or stand. The head contains 50 integrated LEDs that spread the light evenly at a 90 degree angle. These LEDs are available in three different colour temperatures. Depending on the chosen mounting clips, EXPO50 LED floodlights can be used on a standard exhibition wall or a modular system, such as Octanorm, Aluvision, beMatrix, Modul, Syma, etc. One of the major advantages of these display floods is their low power consumption and low heat generation. EXPO50 features a power connection for standard IEC power plug. With one power input and one power output, EXPO50 can be connected in series with only one connecting cable to mains power.

WHAT'S INCLUDED?

- 1 x EXPO50 50W LED Floodlight.
- 1 x C13 IEC Mains Lead.



- Product Code/s:** • **DLAN-50T-G346B** - 3000K/4000K/5700K (4500lm)
- Overall Length:** 689mm
- Head Dimensions:** W194 x D150mm x H57mm
- Watts:** 50W
- Beam Angle:** 120 Degrees
- CRI:** 80
- Class:** I
- IP Rating:** IP20
- Material/s:** Aluminium/Polycarbonate
- Mounting Clips Available:** (See Page 9)
- **DLAC-A** - Aluvision & beMatrix
 - **DLAC-O-1** - Octanorm 1
 - **DLAC-O-2** - Octanorm2
 - **DLAC-M** - Modul & Syma
 - **DLAC-C10** - 10cm Screwfix Clip
 - **DLAC-C17** - 17cm Screwfix Clip
 - **DLAC-P16** - 16mm Panel Mounting Clip
 - **DLAC-P19** - 19mm Panel Mounting Clip
 - **DLAC-P22** - 22mm Panel Mounting Clip
 - **DLAC-TC30** - 30cm Truss Hook
 - **DLAC-TC40** - 40cm Truss Hook
 - **DLAC-PC** - Panel & Pipe Clamp (50mm Max')
- Tilt Angle:** 90 Degrees
- Rotation:** 350 Degrees
- Finish:** Silver
- Input Power:** 110-240VAC
- Connection/s:** Built-in IEC C14 input + IEC C13 output
- Maximum Linkable:** 8
- Nett Weight:** 1250g
- Optional Extra's:** (See Pages 10 & 11)
- **DLAC-C14-C13-150** - 1.5m IEC C14 to C13 Mains Lead
 - **DLAC-C14-C13-200** - 2m IEC C14 to C13 Mains Lead
 - **DLAC-C14-C13-300** - 3m IEC C14 to C13 Mains Lead
 - **DLAC-A7.6** - 7.6 Degree Angled Clip
 - **DLAC-BR** - Mounting Clip with Safety Hook
 - **DLAC-S** - 30cm Safety Cable
 - **DLAB-8** - Transport Case for 8 x EXPO30 & EXPO50

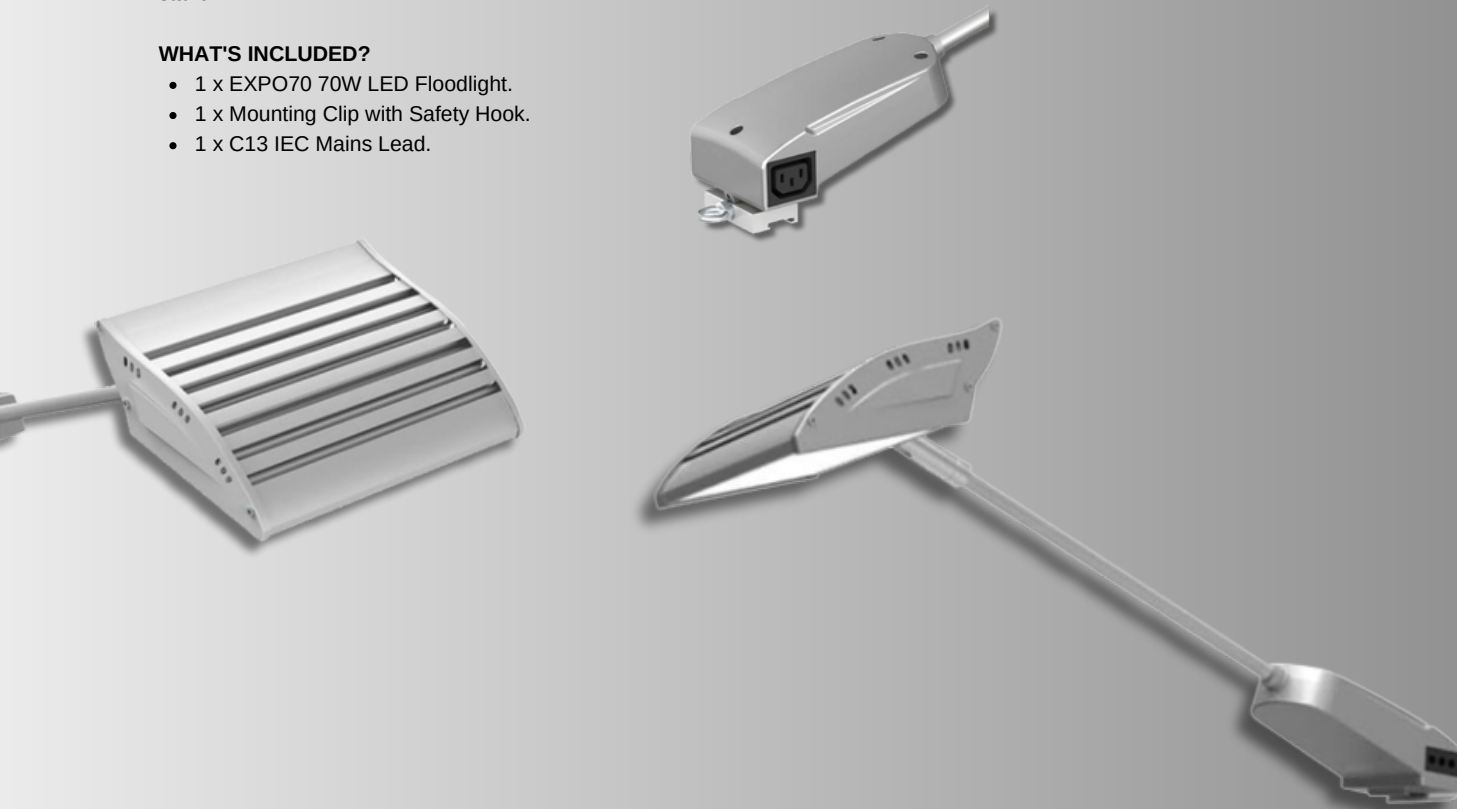


EXPO70

EXPO70 LED Floodlight is the most powerful floodlight in the EXPO range. Thanks to the high light output up to 8700 lumens and the integrated safety ring EXPO70 can be used at great heights and is also ideal for banner illumination. The aluminium floodlight consists of a base that houses the driver and power connection. The extra long arm ensures that the light is spread over a large area of the wall or stand. The integrated 80 SMD LEDs spread light at an angle of 90 degrees. To ensure optimum safety, EXPO70 is fitted with a safety ring as standard. Using a small safety cable, the spotlight can be attached to the truss etc. EXPO70 is mainly used on high walls or on a truss to illuminate exhibition walls or banners. In addition, this floodlight is also very suitable for total illumination of the entire stand.

WHAT'S INCLUDED?

- 1 x EXPO70 70W LED Floodlight.
- 1 x Mounting Clip with Safety Hook.
- 1 x C13 IEC Mains Lead.



Product Code/s:

- **DLAN-70-G4B** - 4000K (8300lm)
- **DLAN-70-G6B** - 5700K (8700lm)

Overall Length: 689mm

Head Dimensions: W194 x D150mm x H57mm

Watts: 70W

Beam Angle: 120 Degrees

CRI: 80

Class: I

IP Rating: IP20

Material/s: Aluminium/Polycarbonate

Mounting Clips Available:

- **DLAC-A** - Aluvision & beMatrix

(See Page 9)

- **DLAC-TC30** - 30cm Truss Hook

- **DLAC-TC40** - 40cm Truss Hook

Tilt Angle: 90 Degrees

Rotation: 350 Degrees

Finish: Silver

Input Power: 110-240VAC

Connection/s: Built-in IEC C14 input + IEC C13 output

Maximum Linkable: 5

Nett Weight: 1250g

Optional Extra's:

- **DLAC-C14-C13-150** - 1.5m IEC C14 to C13 Mains Lead

(See Pages 10 & 11)

- **DLAC-C14-C13-200** - 2m IEC C14 to C13 Mains Lead

- **DLAC-C14-C13-300** - 3m IEC C14 to C13 Mains Lead

- **DLAC-A7.6** - 7.6 Degree Angled Clip

- **DLAC-S** - 30cm Safety Cable

- **DLAB-70** - Transport Case for 5 x EXPO70

EXPO Mounting Clips

EXPO Mounting Clips are available for any exhibition stand system, ranging from a wood wall or panel to an aluminum modular system or truss.

DLAC-P16
16mm Panel

DLAC-P19
19mm Panel

DLAC-P22
22mm Panel



DLAC-O-1
Octanorm 1

DLAC-O-2
Octanorm 2

DLAC-M
Modul / Syma



DLAC-A
Aluvision & beMatrix

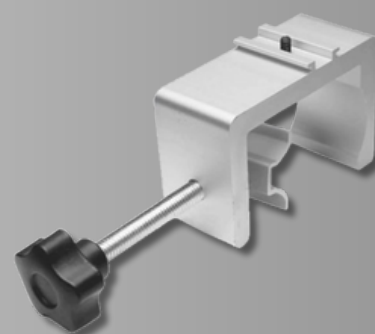


DLAC-C10
10cm Screw Fix

DLAC-C17
17cm Screwfix



DLAC-PC
Panel & Pipe Clamp



DLAC-TC30
30cm Truss Hook

DLAC-TC40
40cm Truss Hook



EXPO Optional Extra's

Choose from the selection of optional extras available to make your installation quick and easy and protect your EXPO LED Floodlights in transit.

DLAC-C8-C7-200
2m C8-C7 Connection Lead



DLAC-C14-C13-R150
1.5m C14-C13 IEC Connection Lead



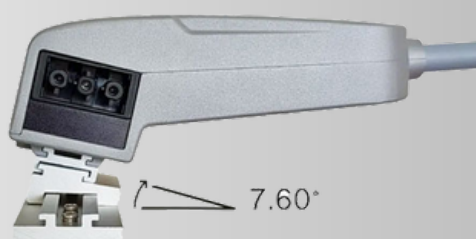
DLAC-C14-C13-R200
2m C14-C13 IEC Connection Lead



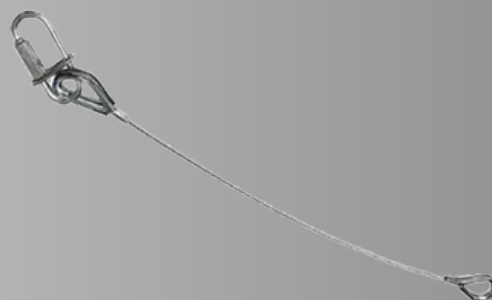
DLAC-C14-C13-R300
3m C14-C13 IEC Connection Lead



DLAC-A7.6
7.6 Degree Angled Clip giving Straight Arm Projection



DLAC-S
30cm Steel Safety Cable



EXPO Transport Bag & Crates

Choose from the selection of optional extras available to make your installation quick and easy and protect your EXPO LED Floodlights in transit.

DLAB-BB

Carry Bag for 2 x EXPO20
570mm x 195mm x 115mm



DLAB-20

Transport Crate with Lid for 6 x EXPO20
600mm x 400mm x 175mm
Weight - 3Kg



DLAB-8H

Transport Crate with Lid for 8 x EXPO25
L800mm x W600mm x H280mm
Weight - 6Kg



DLAB-8

Transport Crate with Lid for 8 x EXPO30 or EXPO50
L800mm x W600mm x H220mm
Weight - 6Kg



DLAB-70

Transport Crate with Lid for 5 x EXPO70
L800mm x W600mm x H280mm
Weight - 6Kg

