



**DESIGN
AWARD
2019**



**reddot design award
winner 2019**



SMART MINITRACK SYSTEM

Statement by the Reddot Design Award 2019

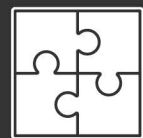
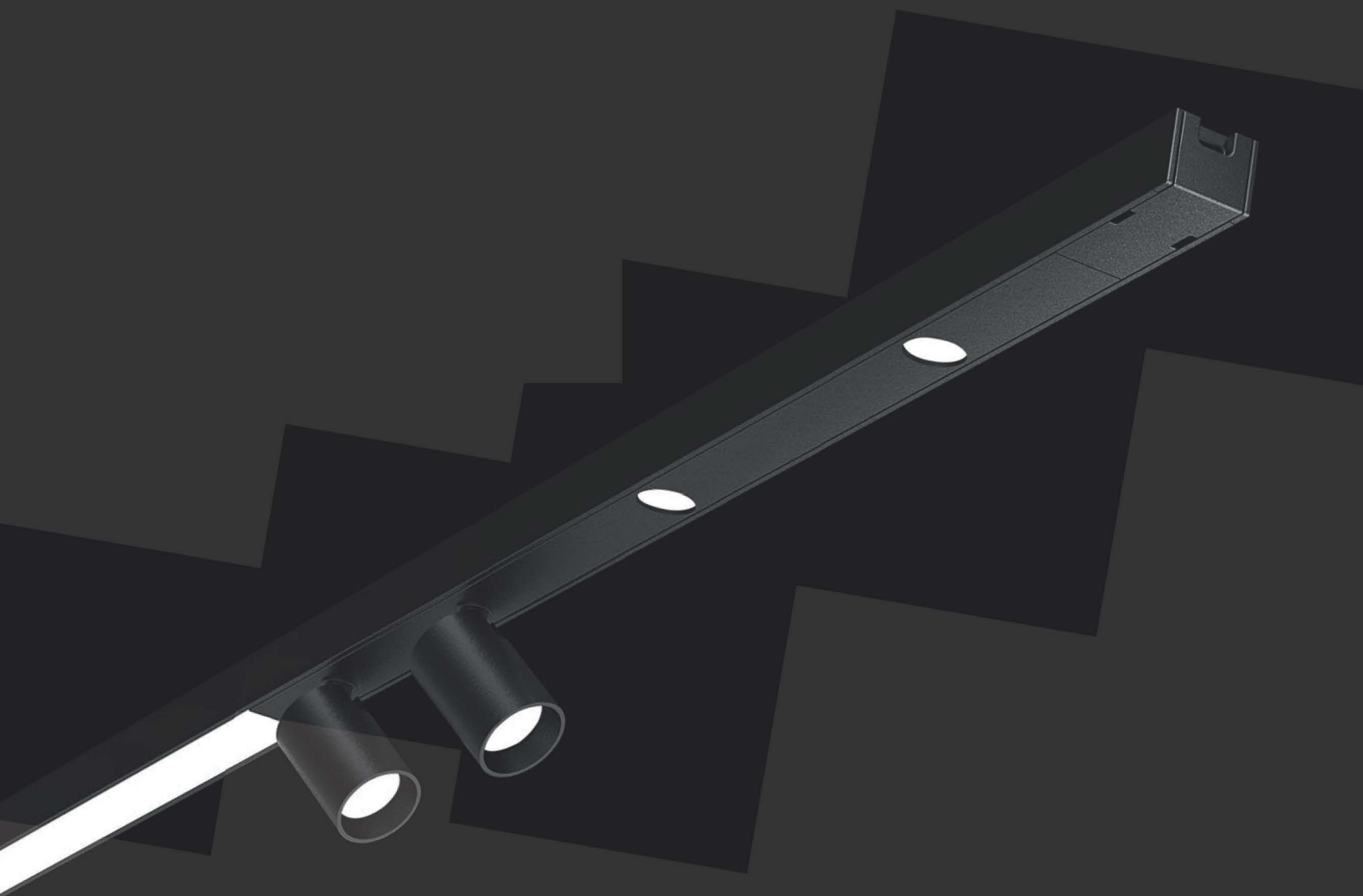
As a technically sophisticated and compact product solution, this spotlight system enables effective illumination even in narrow spaces.

 **display lighting**

One shop, One light

Smart MiniTrack is a miniature modular track lighting solution designed for installation in ceilings, walls and in to showcases and cabinets.





Free combination



Polarized free

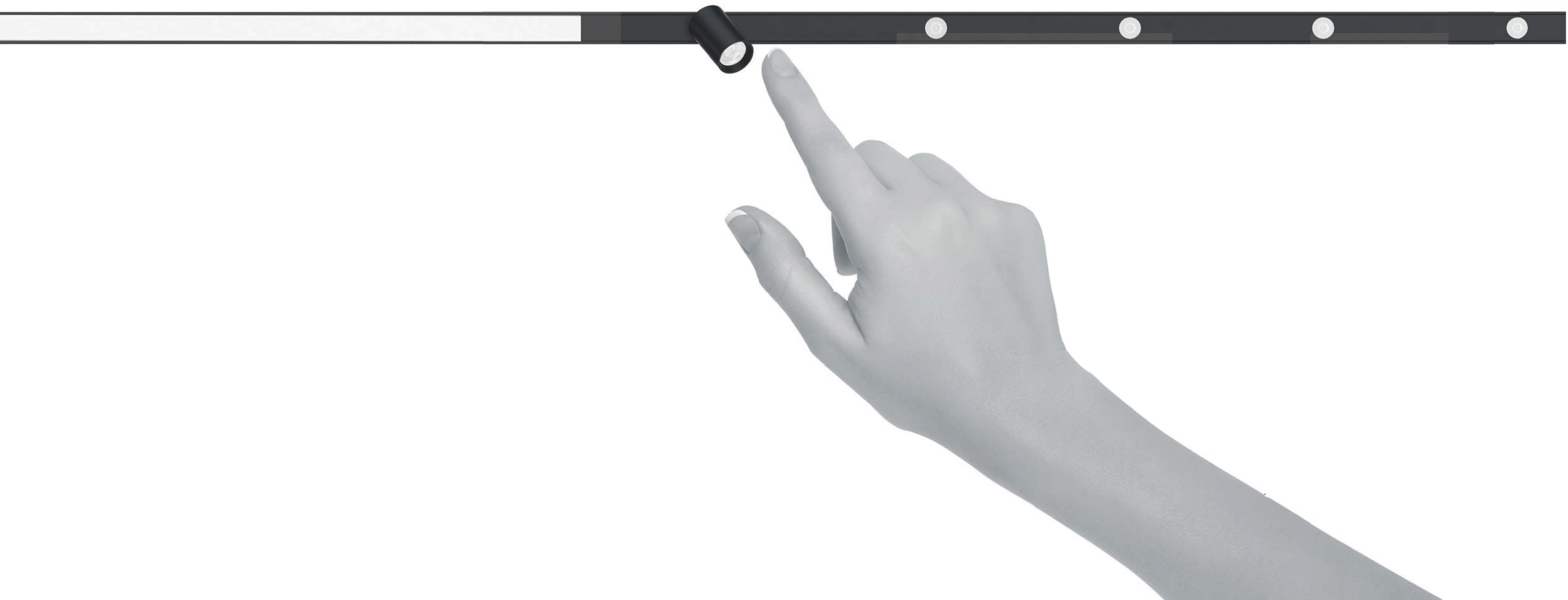


Color: black / silver





Smaller, Lighter and Slimmer



Light Distribution



20°

MINITRACK SPOTLIGHTS

30°

MINITRACK DOWNLIGHTS

125°

MINITRACK LINEAR STRIPS

Attractive Colour Presentation

CRI>90, High Quality Light Output

Because ambient light reproduces colours differently, the colour rendering index (CRI) is used as reference. The CRI indicates the ratio by which the illuminated object or the illuminated area deviates from the maximum value of 100 (daylight). MINITRACK has an impressively high CRI of 90, which means that it comes very close to natural light and is suitable for colour-sensitive applications such as display cases and special exhibition spaces. The material quality, feel, and colour authenticity of merchandise and artworks need to be rendered as accurately as possible to accentuate objects' value. The especially small light surface of the LEDs and high light density allow the luminaires to perfectly reflect the three-dimensionality of amorphous surfaces. Products with a CRI of 90 are perfect for high-end sales floors and art settings.



Ra(R9) 90(50)



Ra(R9) 97(90)

Ra(R9) 90(50)

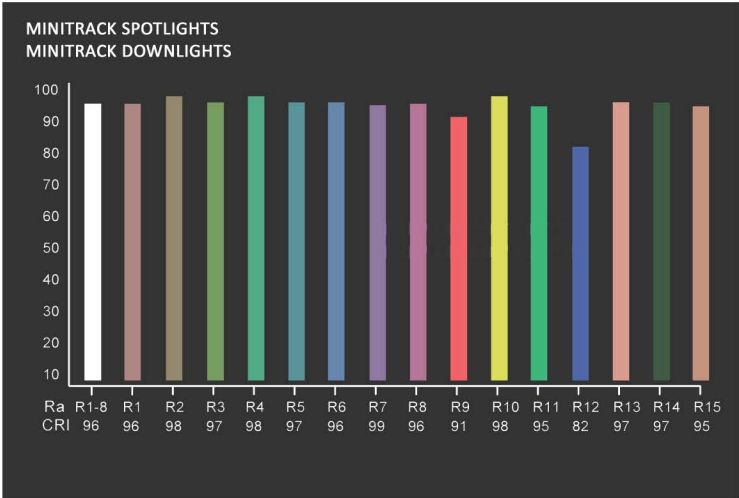


Ra(R9) 97(90)



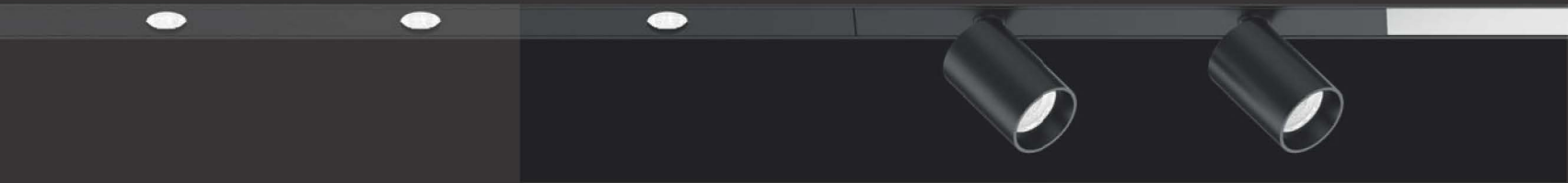
R9>90, Closer to True Colors

R9 is the index to present the color of Red. Red is a very important icon to many objects like photography, textiles, bones and skins. For human eyes, the red is a key reference to distinguish the real true colors. A higher R9 index can better present the true colors. MINITRACK , with R9 higher than 90, can better present the world closer to true colors.





SMART MINITRACK SYSTEM



MINITRACK SPOTLIGHTS



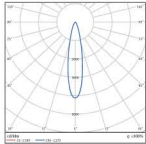
silver



black



Photometrics



Specifications

Order no.	Input Voltage (V)	Power (W)	CCT (K)	Ra	Beam angle	Luminous flux (lm)	Luminaire efficacy (lm/w)	Dimmable	Length (mm)	Weight (g)
MINITRACK-S1.WW	24	1.5	3000	97(90)	20°	80	53	Ture	50	18
MINITRACK-S1.NW			4000			88	59			
MINITRACK-S2.WW	24	2.6	3000	97(90)	20°	160	62	Ture	100	25
MINITRACK-S2.NW			4000			180	69			
MINITRACK-S3.WW	24	3.7	3000	97(90)	20°	240	65	Ture	150	36
MINITRACK-S3.NW			4000			260	70			

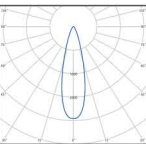
MINITRACK DOWNLIGHTS



silver



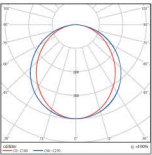
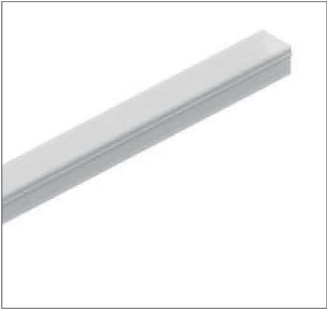
black



Specifications

Order no.	Input Voltage (V)	Power (W)	CCT (K)	Ra	Beam angle	Luminous flux (lm)	Luminaire efficacy (lm/w)	Dimmable	Length (mm)	Weight (g)
MINITRACK-D2.WW	24	2.5	3000	97(90)	30°	150	60	Ture	150	15.5
MINITRACK-D2.NW			4000			170	68			
MINITRACK-D4.WW	24	4.8	3000	97(90)	30°	340	71	Ture	300	30
MINITRACK-D4.NW			4000			370	77			

MINITRACK LINEAR STRIPS



Specifications

Order no.	Input Voltage (V)	Power (W)	CCT (K)	Ra	Beam angle	Luminous flux (lm)	Luminaire efficacy (lm/w)	Dimmable	Length (mm)	Weight (g)
MINITRACK-L30.WW	24	0.75	3000	93(50)	125°	62	83	Ture	30	2
MINITRACK-L30.NW			4000			67	89			
MINITRACK-L150.WW	24	2.4	3000	93(50)	125°	210	88	Ture	150	9
MINITRACK-L150.NW			4000			230	96			
MINITRACK-L300.WW	24	4.8	3000	93(50)	125°	420	88	Ture	300	17
MINITRACK-L300.NW			4000			450	94			
MINITRACK-L600.WW	24	9.6	3000	93(50)	125°	830	86	Ture	600	32
MINITRACK-L600.NW			4000			900	94			
MINITRACK-L900.WW	24	14.4	3000	93(50)	100°	1200	83	Ture	900	46
MINITRACK-L900.NW			4000			1400	97			
MINITRACK-L1049.WW	24	16.8	3000	93(50)	100°	1500	89	Ture	1049	55
MINITRACK-L1049.NW			4000			1600	95			