

The background is a collage of three construction-related images. The top left shows a building under construction with scaffolding and a crane. The top right shows a large construction site with a tall crane and rebar structures. The bottom left shows a close-up of a waterproofing installation on a flat roof with a white membrane and a vertical pipe.

**JN**<sup>®</sup> **NEWTON**  
WATERPROOFING

# THE 2024 NEWTON WATERPROOFING PRODUCT CATALOGUE

Head Office: 01732 360 095

[info@newtonwaterproofing.co.uk](mailto:info@newtonwaterproofing.co.uk)

Leeds: 0113 521 6777



**HEAD OFFICE** 📍 Newton House, 17-19 Sovereign Way  
Tonbridge, Kent, TN9 1RH

☎ 01732 360 095  
✉ info@newtonwaterproofing.co.uk

**LEEDS OFFICE** 📍 Unit 6b Gibraltar Island Road, Old Mill Business Park  
Hunslet, Leeds, LS10 1RJ

☎ 0113 521 6777  
✉ north@newtonwaterproofing.co.uk



### WELCOME TO NEWTON 4

### WATERPROOFING SYSTEMS 6

### STRUCTURAL WATERPROOFING 10

Type A External - <b>HYDROBOND SYSTEM</b>	10
• Pre-Applied Membranes	11
• Pre-Applied Membrane Ancillaries	11
• Drainage Membranes	13
• Post-Applied Membranes	14
• Post-Applied Membrane Ancillaries	15
Type A Internal - <b>HYDROCOAT SYSTEM</b>	16
• Cementitious Membranes	17
• Cementitious Membrane Ancillaries	18
• Specialist Mixing Equipment	20
• Pre-Bagged Render & Screed System	21
Type B Integral - <b>HYDROTANK SYSTEM</b>	22
• Waterbars & Waterstops	23
• Waterbar Adhesive & Mastic	23
• Injection Hose & Resin	24
• Service Entry Sealing Systems	25
• Tie-Bolt Hole Sealing System	27
Type C Drained Cavity - <b>CDM SYSTEM</b>	28
• Professional Cavity Drain Membranes	29
• Cavity Drain Membranes	30
• Insulation & Drainage	31
• Plugs, Tapes & Ancillaries	32
• CDM Sump & Pump Systems	34
• Pump Control & Alarm Systems	35
• Battery Backup Kits for Your Pump System	36
• Telemetry & Monitoring Ancillaries	37

### PUMPS & PUMPING SYSTEMS 38

Individual Pump Units	39
Surface & Foul Water Sump & Pump Systems	40
Ground & Surface Water Sump & Pump Systems	41
Foul Water Sump & Pump Systems	41

### DAMP PROOFING 42

Damp Proofing Membranes - <b>NEWTONITE SYSTEM</b>	42
• Above Ground Damp Proofing Membranes	43
• Damp Proofing Ancillaries	44
Damp Proofing Products - <b>DAMPSAFE SYSTEM</b>	46
• Flooring & Tiling Membranes	46
• DPCs & DPMs	47

### LEAK SEALING 48

Injection Resins, Cleaning & Ancillaries - <b>LEAKINJECT</b>	48
Injection Pumps	50
Pipe, Duct & Structural Leak Sealing	50

### COATINGS 51

Hard Wearing Coatings - <b>NEWCOAT SYSTEM</b>	51
---	----

### EPD CERTIFICATES & RECYCLED PRODUCTS 52

### SPECIALIST DESIGN & INSTALLATION 54



### PROTECTING BUILDINGS SINCE 1848

#### WELCOME TO NEWTON WATERPROOFING SYSTEMS

Newton Waterproofing Systems are the oldest and the largest independent designers and suppliers of guaranteed waterproofing systems in the UK, providing complete waterproofing systems for any below-ground structure. From design services to installation advice, we can assist throughout your project.

Use this catalogue to browse our extensive range of products for waterproofing, damp proofing, gas proofing and structural protection and repair - please also feel free to contact us for further product advice.

Newton Waterproofing Systems have been a family run business since 1848.

We were the first to pioneer 'air gap' technology in 1931 and developed the first cavity drain membrane system in 1986. We have a proven history of supplying high quality waterproofing and damp proofing materials along with expert technical advice and support.



#### NEXT-DAY DELIVERIES ON NEWTON VANS

Our FORS accredited delivery fleet provides tracked next-day deliveries from our distribution centres both in Tonbridge in the South East and in Leeds in the North West.



#### CLASSROOM AND ON-SITE TRAINING

Our experienced site-support team are vastly experienced in installing our products. Benefit from their knowledge with bespoke site-based training, or theoretical classroom seminars.



#### GUARANTEES & WARRANTIES

All our products have a warranty, with the option for an A-rated Insurance Backed Guarantee (IBG). Installation guarantees are also available from our specialist contractors.



#### ISO 9001, 14001 & 45001 APPROVALS

Independently verified since 2018 to the ISO 9001, 14001 and 45001 standards for quality management, environmental responsibility & occupational health and safety.



#### SUSTAINABILITY AND RECYCLING

Access the unique, award-winning Newton Recycling Service for waste packaging and membrane off-cuts, the first scheme of its kind in the UK waterproofing industry.



#### PRODUCT HELP AND ADVICE

Our qualified experts provide waterproofing assistance of all kinds, from basic advice and drawings, to taking full design liability under our Professional Indemnity insurance.

#### PRODUCT CERTIFICATION, TESTING AND SUSTAINABILITY

Independence is our strength - we are not tied to a specific manufacturer, giving us the freedom to source the best products for any waterproofing requirement. We also ensure our products hold all relevant third-party test data.

Throughout this catalogue, products that hold BBA or BDA certification, Environmental Product Declarations (EPDs), or which qualify for our Recycling Service, have been marked with these useful icons.



Product holds BBA approval



Product holds BDA certification



Product/packaging is recyclable

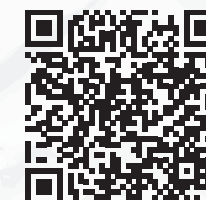


Product has an EPD certificate (Environmental Product Declaration)

#### 24/7 ACCESS TO DOCUMENTS

The Newton Waterproofing App is free to download from the App Store for iPhones and iPads, and the Google Play Store for Android devices. Once downloaded, the app provides unlimited access to all Newton product documents without the need for an internet connection.

Scan the QR codes to the right to download the Newton Waterproofing App to your device.



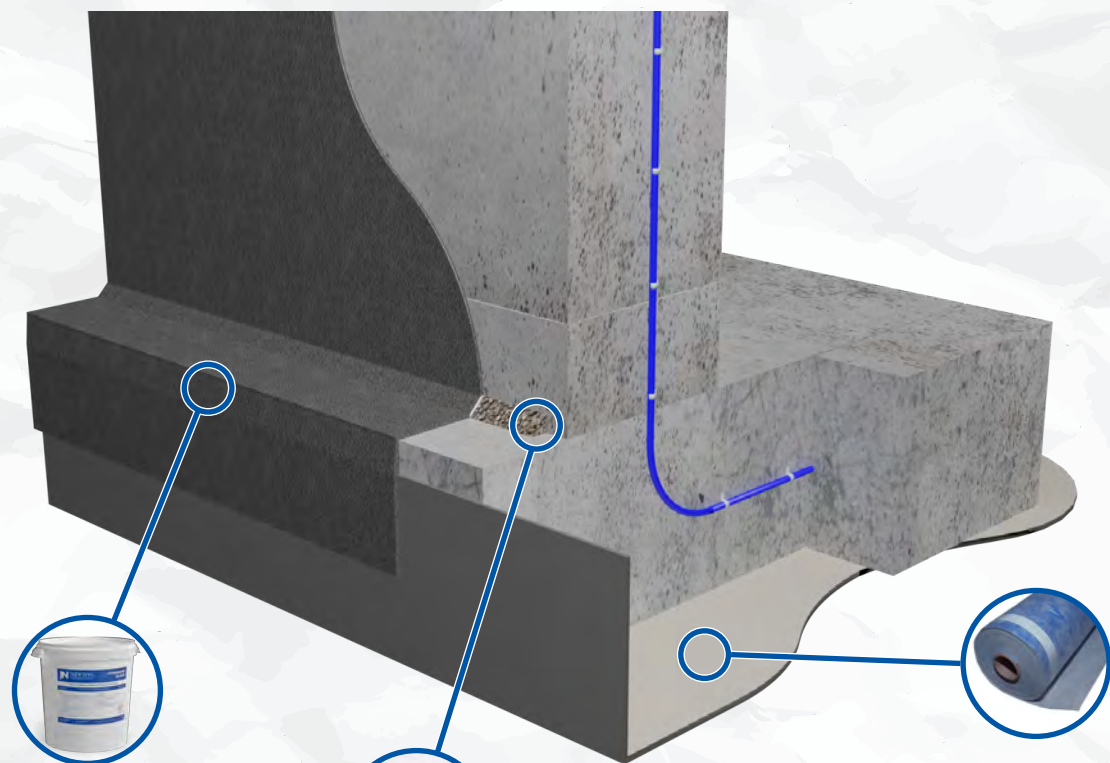


## HYDROBOND - PAGES 10-15

### TYPE A - EXTERNAL WATERPROOFING SYSTEM

Defined by BS 8102:2022 as "barrier" protection that is applied to the external surface of a structure in order to resist water pressure, the Newton HydroBond System provides a complete and continuous waterproof barrier to the external surface of any below ground structure.

The system includes pre-applied, self-healing sheet membranes, and post-applied membranes that link to the above ground DPC to completely encapsulate the basement in a continuous waterproof layer.



#### HydroBond 2K-Flex Flexible, Reinforced Bitumen Coating

Flexible, two-component and cold-applied seamless waterproofing membrane.

Page 14



#### HydroBond 203-RM Rapid Set, High Strength Repair Mortar

Single-component, fast-setting mortar for the durable repair of concrete and reinforcing wall-floor junctions

Page 19

#### HydroBond 403 Self-Healing, Pre-Applied Membrane

High performance, self healing membrane with a locking fleece on the inner surface that ensures a mechanical bond to the concrete

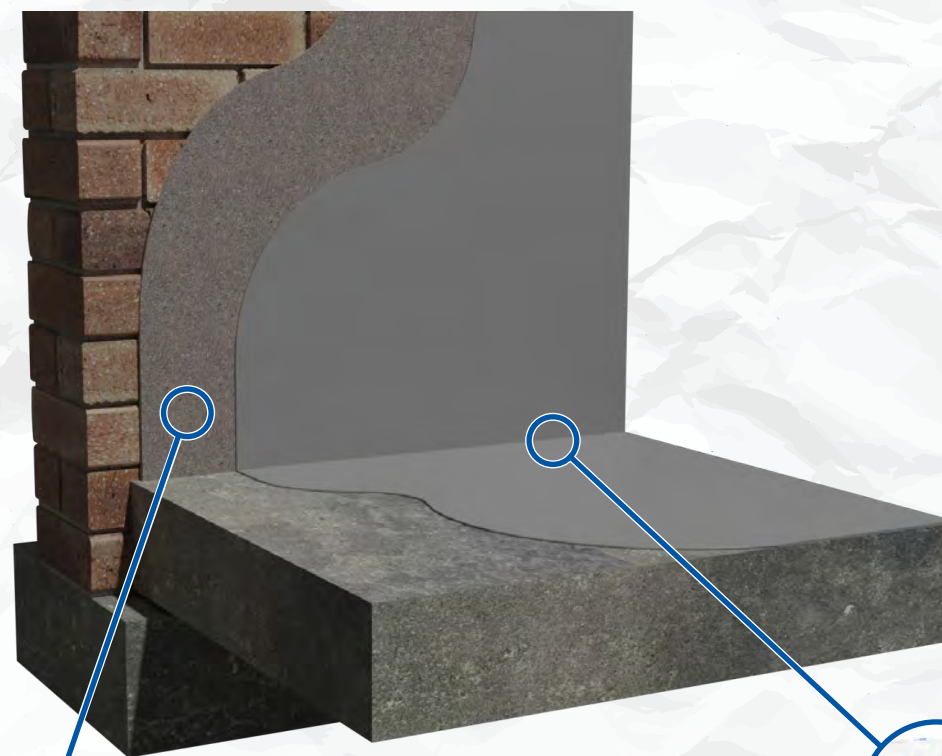
Page 11

## HYDROCOAT - PAGES 16-21

### TYPE A - INTERNAL WATERPROOFING SYSTEM

Defined by BS 8102:2022 as "barrier" protection that is applied to the internal surface of a structure in order to resist water pressure, the Newton HydroCoat System provides a BDA certified solution, utilising advanced products that are also quick and easy to apply.

The system includes a variety of liquid-applied membranes and slurries that can be installed by spray, trowel, brush or roller directly to the correctly prepared substrate.



#### HydroCoat LiquaBond Acrylic Bonding Agent and Admixture

A primer for wet-to-dry cementitious systems, and as a high performance admixture in cement-based mixes.

Page 18

#### HydroCoat 107 Elastic 2K Cementitious Flexible Waterproofing Membrane

Cementitious coating for the waterproofing and protection of concrete and masonry. Can be spray applied, making it ideal for large projects, including reservoirs, tunnels, water tanks, basements, podium decks and balconies.

Page 17

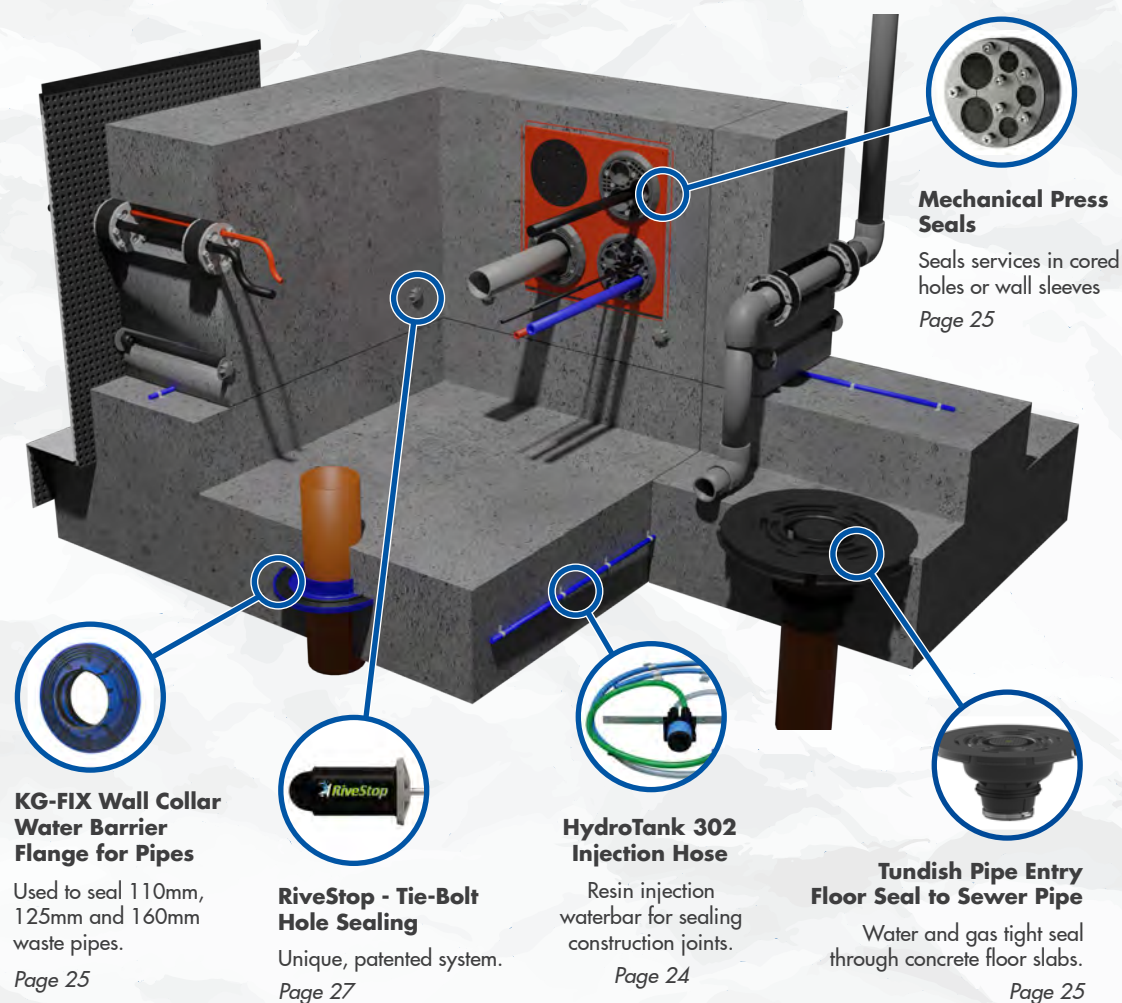


## HYDROTANK - PAGES 22 - 27

### TYPE B - INTEGRAL WATERPROOFING SYSTEM

Defined by BS 8102:2022 as “structurally integral” protection where the structure itself is designed to be integrally waterproof and the primary resistance to water, the Newton HydroTank System provides options for protecting the joints and penetrations through your well-designed and well-placed concrete structure.

The system includes a range of waterbars, waterstops, injection resins, and service entry sealing systems that are used to achieve an effective and watertight Type B solution.

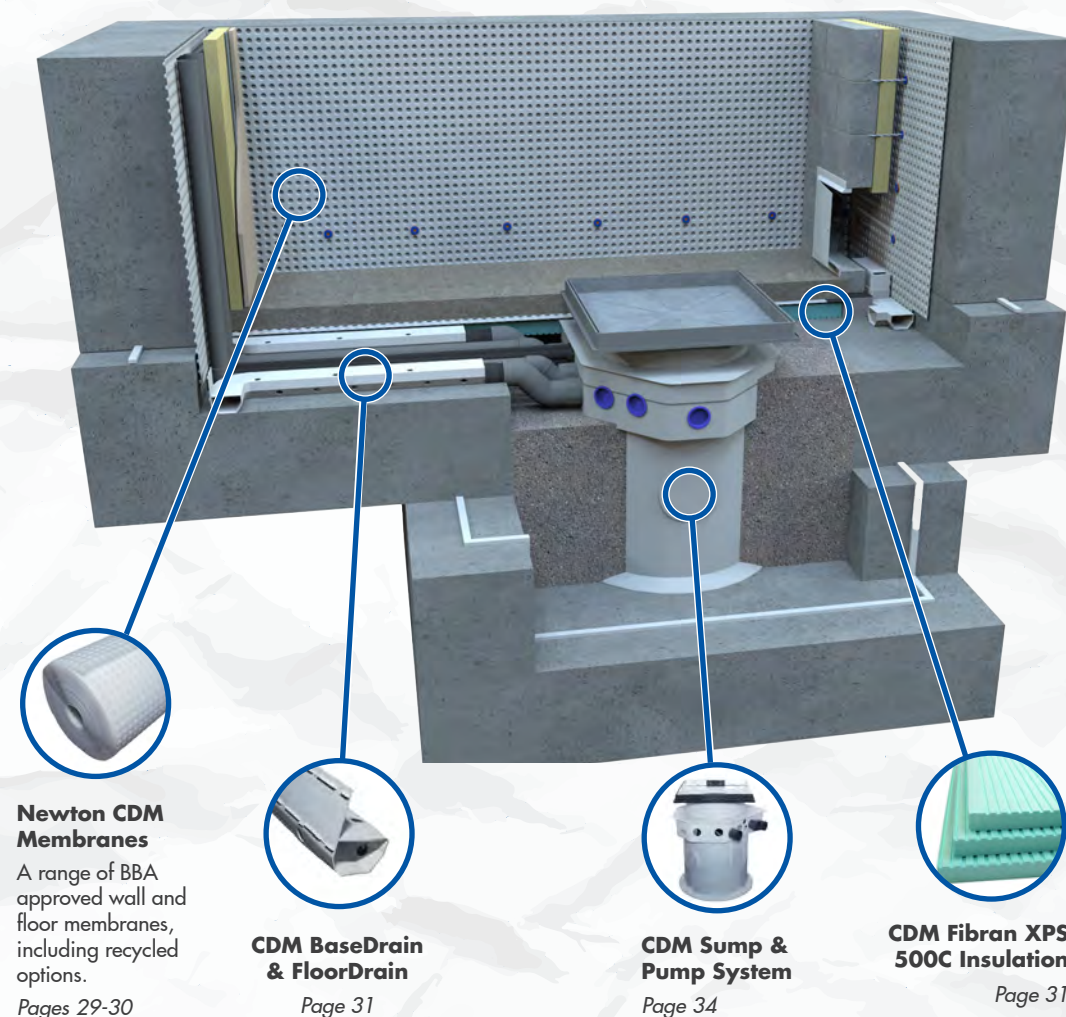


## CDM SYSTEM - PAGES 28 - 37

### TYPE C - CAVITY DRAIN WATERPROOFING SYSTEM

Defined by BS 8102:2022 as “drained” protection where ingressing water is accepted into the structure then safely depressurised, captured and removed, the Newton CDM System is a maintainable basement waterproofing solution that is ideal for both new-build and refurbishment projects.

The system combines our decades of experience with the highest quality, BBA certified cavity drain membranes, supported by bespoke pumping, control, backup power and telemetry systems.





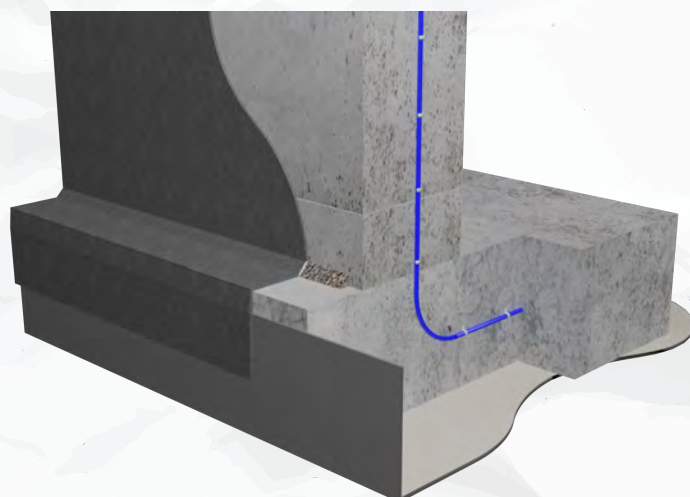
## TYPE A EXTERNAL HYDROBOND SYSTEM



### TYPE A WATERPROOFING

Defined by BS 8102:2022 as “barrier” protection that is applied to the internal or external surface of a structure to resist water, Type A products provide a continuous barrier to the surface of any below ground structure.

The Newton Type A range includes pre- and post-applied sheet membranes as well as post-applied liquid membranes, giving you options for delivering a continuous waterproof layer on either the outside or inside of your structure.



## PRE-APPLIED MEMBRANES

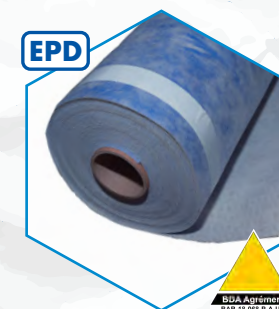
Advanced waterproofing membranes that are installed to permanent raft and wall formwork, for example to raft blinding and piled walls, prior to new concrete structural elements being poured.



### HydroBond Lite - Pre-Applied & Fully Bonded Membrane

- » External waterproofing of basements, foundations, tanks and culverts
- » Exceptional flexibility results in a very high crack-bridging capability
- » Full mechanical bond to concrete

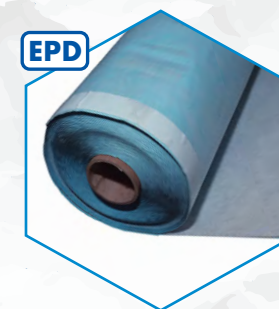
Code	Size	Colour	Area
HB-L	1m x 20m	White/Blue	20m <sup>2</sup>



### HydroBond 403 - Pre-Applied & Self-Healing Membrane

- » Continuous external waterproofing to below-ground concrete structures
- » Self-healing when punctured
- » BDA certified & accepted by the NHBC
- » Full mechanical bond to concrete

Code	Size	Colour	Area
HB-2	1m x 20m	White/Blue	20m <sup>2</sup>



### HydroBond 403 GB - Pre-Applied Water/Gas Membrane

- » Continuous external waterproofing to below-ground concrete structures
- » Resistant to radon, carbon dioxide and hydrocarbons in the ground
- » Self-healing when punctured

Code	Size	Colour	Area
HBGB	1.5m x 20m	White/Blue	30m <sup>2</sup>

## PRE-APPLIED MEMBRANE ANCILLARIES

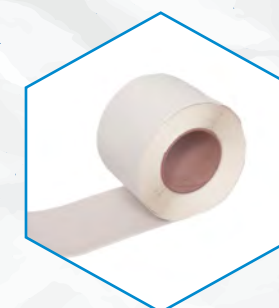
Find all of the products required to securely install and protect your pre-applied Type A membrane, from tape and fixings to detailing and protection.



### HydroBond Soft Washer Fixings - HydroBond 403

- » Used when HydroBond 403 and HydroBond 403 GB is pre-applied to concrete substrates such as secant piled walls
- » Easily installed with a hammer

Code	Size	Quantity
403SF	8 x 36mm	100



### HydroBond Tape - Double-Sided Sealing Tape

- » Sealing tape for HydroBond 403 and HydroBond 403 GB
- » Provides a firm seal and bonds the two membrane surfaces together for robust laps and repairs

Code	Size	Colour
HBT	75mm x 20m	White/Dark Blue



### PRE-APPLIED MEMBRANE ANCILLARIES



#### HydroBond 109-LM - Detailing Membrane to DPC/Cavity Tray

- » Flexible, single-component, cold-applied seamless rubber membrane
- » Ideal for detailing to HydroBond waterproofing membranes

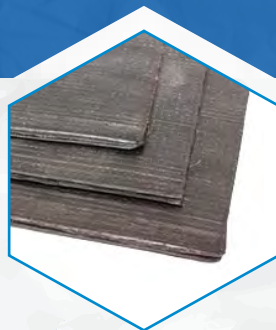
Code	Size	Colour	Application
109MV	20L	Black	1.6 L/m <sup>2</sup> per coat in three coats



#### HydroBond 314 Bentonite Granules - Detailing Elements

- » Detailing HydroBond pre-applied membranes (p11) at terminations to other building elements
- » Swells up to 15x its original size
- » Easily applied by hand

Code	Size	Colour	Yield - 40mm fillet
314BG/20	20kg	Tan	25 linear metres



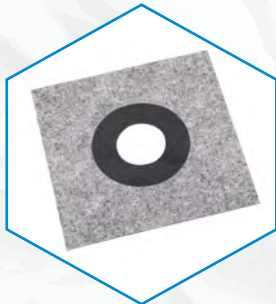
#### HydroBond Protection Board - Prevent Membrane Damage

- » Protect externally applied waterproof membranes (p11 & p14)
- » Bitumen-impregnated protection board
- » Easily cut with a knife - quick to install
- » Resistant to water and chemicals

Code	Board Size	Colour
HBPB	3mm x 1m x 2m	Black



HydroBond 314 Bentonite detailing around a pile head



#### Pipe Collar - Preformed Flexible Pipe Seal

- » Flexible pipe seal for pipes from 75-110mm in diameter
- » For sealing protruding pipes to the flat surfaces of HydroBond System and CDM System membranes

Code	Suitable for	Colour	Units
A35	75 - 110mm pipes	Grey	1



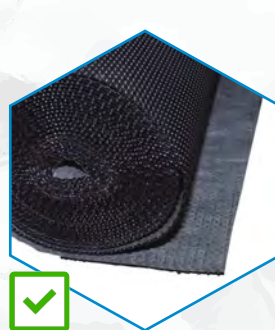
#### HydroTank 306 Swell Mastic - Swelling Adhesive

- » Swells in contact with water to 200% of its original size
- » For installing Newton waterbars (p23), detailing HydroBond 403 (p11) and sealing protrusions

Code	Size	Colour	Application Rate
306	310ml	White	5.5 - 8.5 linear metres

### DRAINAGE MEMBRANES

Protection for externally applied waterproofing systems, as well as above deck, balcony or flat roof waterproofing membranes. Also for preventing the build-up of ground water to retaining walls.



#### NewSeal 408 DeckDrain - Deck/Roof Drainage

- » Drainage layer above a deck, balcony or flat roof waterproofing membrane
- » Ensures water cannot be trapped above the deck membrane
- » Geotextile filters out soil particles

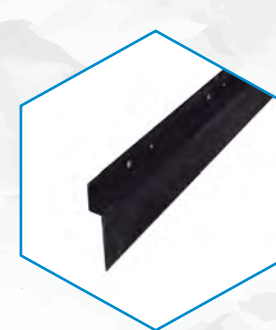
Code	Size	Colour	Area
M33	2m x 20m	Black	40m <sup>2</sup>



#### HydroBond 410 GeoDrain - External Drainage Membrane

- » Drainage layer and protection for external waterproofing membranes
- » Protects against aggressive ground water chemicals and water pressure
- » Extremely strong and durable

Code	Size	Colour	Area
M18	2m x 12.5m	Black	25m <sup>2</sup>



#### HydroBond Geo Profile - Capping Strip for GeoDrain

- » HDPP capping strip applied to the top of HydroBond 410 GeoDrain
- » Seals the drainage membrane against debris accidentally falling behind the membrane during backfilling

Code	Size	Colour
A15	2m x 64mm	Black



HydroBond 410 GeoDrain provides effective protection against damage from backfilling



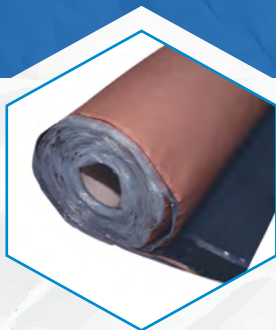
### POST-APPLIED MEMBRANES



#### HydroBond 2K-Flex - Flexible, Reinforced Bitumen Coating

- » External waterproofing of below-ground structures and retaining walls
- » Complete vapour barrier
- » Flexible, bridging cracks up to 2mm
- » Easily applied up to 7mm thick

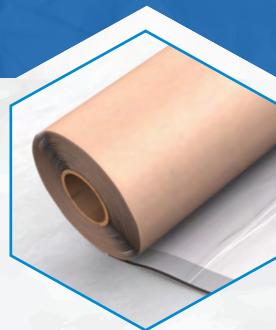
Code	Size	Colour	Application
HB-2K	32kg	Black	4.5 - 6.5 kg/m <sup>2</sup>



#### HydroBond SA - Self-Adhesive Waterproofing

- » Post-applied to below-ground concrete, block or ICF walls
- » Flexible and durable membrane
- » Resistant to aggressive ground water chemicals and impact

Code	Size	Colour	Area
401M	1.5mm x 1.05m x 19.05m	Black	20m <sup>2</sup>



#### HydroBond SAGM - Self-Adhesive Gas Membrane

- » Post-applied to below-ground concrete, block or ICF walls
- » External waterproofing and gas proofing of below-ground structures
- » Flexible and durable membrane

Code	Size	Colour	Area
401GM	1.5mm x 1.05m x 19.05m	White	20m <sup>2</sup>



HydroBond SA is installed as a post-applied membrane to an existing floor

### POST-APPLIED MEMBRANE ANCILLARIES

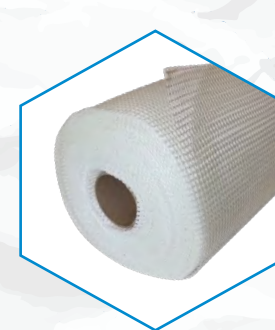
Primers and reinforcement tapes that are directly compatible with our post-applied membranes, and crucial for achieving proper preparation prior to installation, and for reinforcing the finished membrane.



#### HydroBond 2K-Flex Primer - Fast-Drying Bitumen Emulsion

- » Improves HydroBond 2K-Flex (p14) adhesion to many common substrates
- » Single component, ready to use
- » Penetrates into the substrate surface and binds dust particles

Code	Size	Colour	Application Rate
HB-2KP	10L	Black	Approx. 0.2L/m <sup>2</sup>



#### HydroBond 2K-Flex Mesh - Reinforcement for 2K-Flex

- » Bed into the first coat of HydroBond 2K-Flex to provide reinforcement and strength to the flexible bitumen coating
- » Made from woven fibreglass yarns & coated with an alkaline resistant latex

Code	Size	Colour
HB-2KM	1m x 50m roll	White



#### HydroBond 109-LM - Detailing Membrane to DPC/Cavity Tray

- » Flexible, single-component, cold-applied seamless rubber membrane
- » Ideal for detailing to HydroBond waterproofing membranes

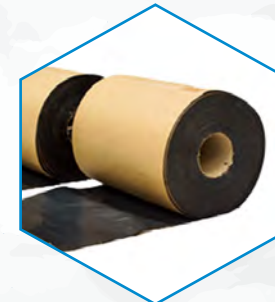
Code	Size	Colour	Application
109MV	20L	Black	1.6 L/m <sup>2</sup> per coat in three coats



#### HydroBond SA Primer LT - Bitumen Primer

- » Primer for HydroBond SA and HydroBond SAGM (p14)
- » Quick and easy to apply, even at low temperatures
- » Moisture tolerant and quick drying

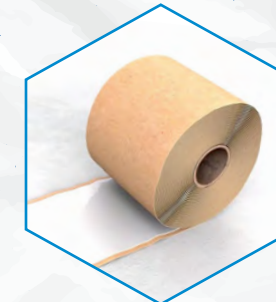
Code	Size	Colour	Application Rate
401-P5	5L	Black	6-8m <sup>2</sup> /litre



#### HydroBond SA Reinforcing Strip - Strengthens Details

- » Compatible with HydroBond SA (p14) self-adhesive waterproofing
- » Reinforces the wall-to-foundation joint and provides enhanced impact and damage protection at external corners

Code	Size	Colour
401-RS	300mm x 20m	Black



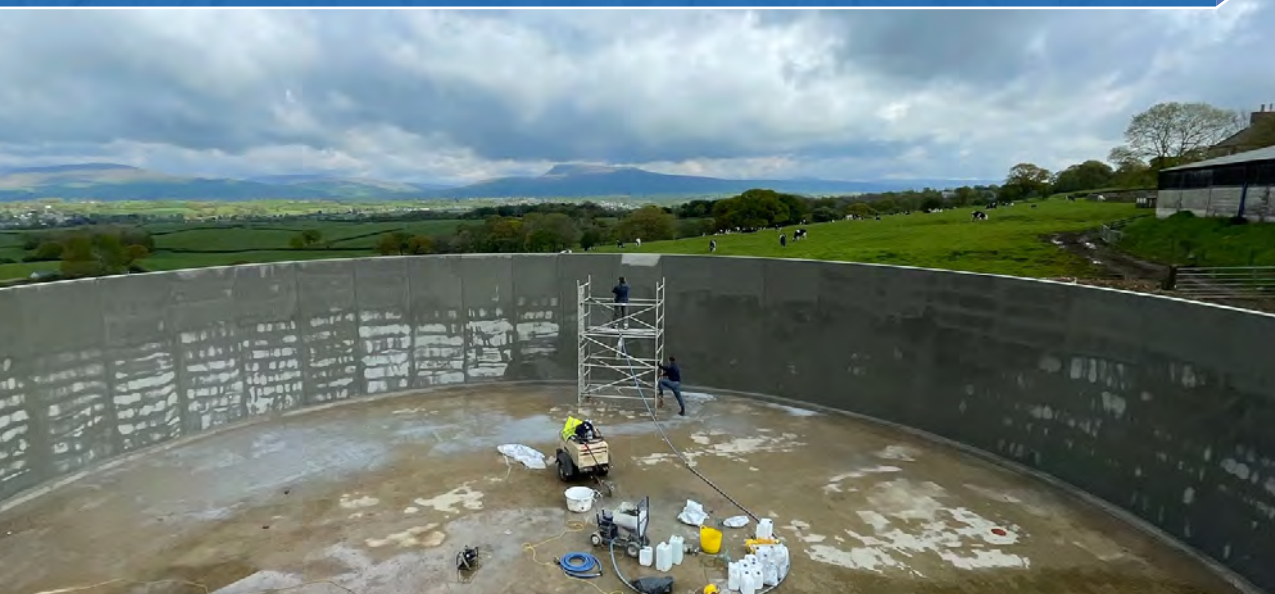
#### HydroBond SAGM Detail Strip - Strengthens Details

- » Use with HydroBond SAGM (p14) gas and waterproofing membrane
- » Reinforces the wall-to-foundation joint and provides enhanced impact and damage protection at external corners

Code	Size	Colour
401-DS	300mm x 20m	White



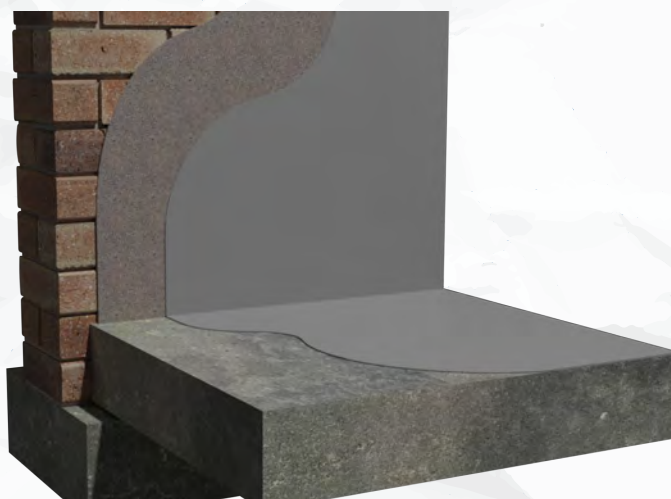
## TYPE A INTERNAL HYDROCOAT SYSTEM



### TYPE A WATERPROOFING

Defined by BS 8102:2022 as “barrier” protection that is applied to the internal or external surface of a structure to resist water, Type A products provide a continuous barrier to the surface of any below ground structure.

The Newton Type A range includes pre- and post-applied sheet membranes as well as post-applied liquid membranes, giving you options for delivering a continuous waterproof layer on either the outside or inside of your structure.



## TYPE A - INTERNAL WATERPROOFING

### CEMENTITIOUS MEMBRANES

A comprehensive portfolio of liquid-applied, cement-based membranes for all substrates and all applications, from flexible and durable coatings to hard wearing and high-strength membranes.



#### HydroCoat 103 2K - Durable Cementitious Coating

- » For below-ground concrete structures, decks, balconies and car parks
- » Resists up to 10 bar water pressure
- » Quick application by airless spray
- » Durable, UV-stable and trafficable

Code	Size	Colour	Application
103-S	30kg	Grey	3.6kg/m <sup>2</sup>



#### HydroCoat 104 Super - Crystalline Waterproofing

- » Applied to the concrete surface to stop moisture movement through capillaries
- » Extremely easy to apply
- » Permeates deep into the concrete
- » Cost-effective membrane alternative

Code	Size	Colour	Application
104	25kg	Grey	1kg/m <sup>2</sup>



#### HydroCoat 105 1K - Cement-Based Waterproof Mortar

- » Five uses - mortar, bag-rubbing mix, surface repair, screed and render
- » Resists positive and negative pressure
- » Quick drying - rain tight in 1 hour
- » Ideal for use in confined spaces

Code	Size	Colour	Application
105	25kg	Grey	3.7 - 11 kg/m <sup>2</sup>



#### HydroCoat 107 Elastic 2K - Cementitious Coating

- » For the waterproofing and protection of concrete and masonry structures
- » BDA Agrément certified
- » Durable and flexible coating
- » Quick application by airless spray

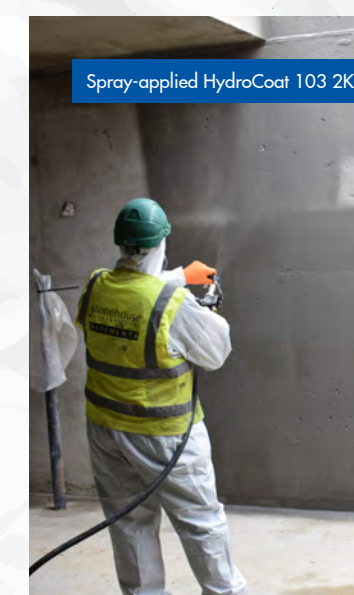
Code	Size	Colour	Application
107F	30kg	Grey	3.2kg/m <sup>2</sup>



#### HydroCoat Tanking Slurry - Single Component Coating

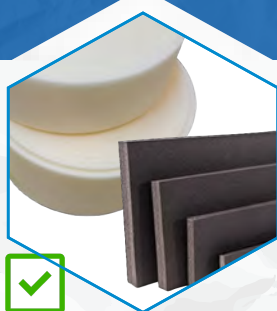
- » Internal or external waterproofing of basements and earth-retaining or water-retaining structures
- » Simple to mix and easy to apply

Codes	Packaging	Application
HSS-20 HSS-20B	20kg bag 20kg bag in bucket	Up to 7 kg/m <sup>2</sup>





### CEMENTITIOUS MEMBRANE ANCILLARIES



#### FlexJoint & FlexJoint HD - Non-Absorbent Joint Fillers

- » Closed-cell polyethylene joint fillers
- » Easy-to-use, economical and safe

Products	Dimensions
FlexJoint HD Sheet	10-25mm x 1m x 2m
FlexJoint Sheet	10-25mm x 1m x 2m
FlexJoint Roll	10/12mm x 100-200mm x 10m
FlexJoint Length	20/25mm x 100-200mm x 2m



#### FlexProof 106 Primer - PU Primer for Construction Joints

- » Priming of substrates prior to applying FlexProof 106
- » Increases adhesion of FlexProof 106 to most substrates
- » Seals porous and dusting concrete

Code	Size	Colour	Application
916	1L	Clear	0.1 - 0.5L/m <sup>2</sup>



#### FlexProof 106 - Construction Joint Waterproofing

- » Seals static and non-static construction joints in earth-retained structures
- » Applicable on damp substrate

Code	Sizes	Colour	Application
106B	15kg	Grey	Dependent on use
106C	290ml		
106NV	7.5kg		



#### HydroCoat 903 Primer - For Cementitious Membranes

- » Concrete primer for our cementitious membranes (p17), concrete repair (p18-19) & coating products (p51)
- » Extremely quick to apply
- » Can be applied to damp/wet concrete

Code	Size	Colour	Application Rate
903-P	5L	Green	0.1 - 0.2L/m <sup>2</sup>



#### HydroCoat 905-CM - Water Based Curing Membrane

- » Inhibits the effect of sun/wind on liquid waterproofing membranes (p17)
- » Extends curing to the required time
- » Ready mixed and ready to apply
- » Easy alternative to traditional sheets

Code	Size	Colour	Application Rate
905-CM	5L	White	5 - 7m <sup>2</sup> /litre/coat



#### HydroCoat LiquaBond - Bonding Agent & Admix

- » High performance admixture & primer for cementitious systems
- » Versatile, resilient, and provides excellent adhesion as an admix

Code	Size	Colour	Application
908-5	5L	Clear	Dependent on intended use



#### HydroCoat 313-WP - Fast-Set Leak Sealing Compound

- » Instantly stops running water/seepage through masonry or concrete
- » Becomes harder under water pressure
- » Non-shrink and sets in just 2 minutes to seal structural leaks

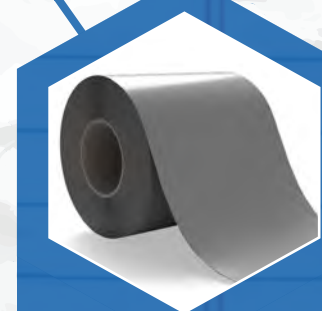
Code	Size	Colour	Yield per kg
313-WP	25kg	Grey Brown	0.46L



#### HydroCoat 203-RM - High Strength Repair Mortar

- » Durable repair of concrete, ideal for bridges, decks, floors and roads
- » Single component, mix with water
- » Resists 10 bar water pressure
- » Rapid curing, even in cold weather

Code	Size	Colour	Yield
203-RM	25kg	Grey	13.3 - 23L



#### HydroCoat Monoflex - Tape for Sealing Joints

- » Post-applied to below-ground concrete, block or ICF walls
- » Flexible and durable membrane
- » Resistant to chemicals and impact

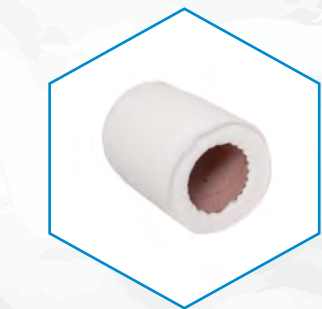
Code	Size	Colour	Area
HS-MF-100	100mm x 20m	Grey	2m <sup>2</sup>
HS-MF-200	200mm x 20m		4m <sup>2</sup>



#### HydroCoat Monoflex Adhesive - Epoxy Adhesive

- » Post-applied to below-ground concrete, block or ICF walls
- » External waterproofing and gas proofing of below-ground structures
- » Flexible and durable membrane

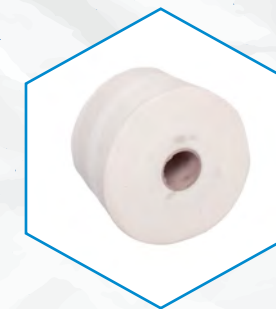
Code	Size	Curing Time at 20°C
HS-MFA	5kg (two containers)	10 to 12 hours



#### HydroCoat 912-RT - Liquid Membrane Reinforcement

- » Compatible with liquid waterproofing membranes (p17) & coatings (p51)
- » Reinforce changes in direction, cracks, static construction/day joints and covered joints with slight movement

Code	Size	Colour
912-RT	150mm x 50m	White



#### HydroCoat 914-RT - Non-Woven Reinforcement Tape

- » Compatible with liquid waterproofing membranes (p17) & coatings (p51)
- » For reinforcing covered movement joints and static construction joints, and detailing around protrusions

Code	Size	Colour
914-RT	150mm x 100m	White



### SPECIALIST MIXING EQUIPMENT



#### Dual-Paddle Hand Mixer - Collomix Xo55 DUO

- » Dual forced action mixer for liquid waterproofing membranes (p17)
- » Intensive, fast and thorough mixing
- » Includes MKD Duo stirrers
- » Excellent ergonomics

Code	Power	Output	Mix Quantity
Xo55	110V	1450W	Up to 90L



#### Single-Paddle Hand Mixers - Collomix Xo1 & Xo4

- » High performance, hand-held mixers
- » Compact and lightweight 1-gear (Xo1) and 2-gear (Xo4) devices
- » Suitable for a variety of mixing tasks

Code	Power	Output	Mix Quantity
Xo1	110V	1010W	Up to 40L
Xo4		1300W	Up to 65L



#### Mixing Paddles - For Mixing Liquids and Powders

- » For liquid membranes (p17), HydroCoat 203-RM (p19), Epoxy Top Coat (p51) & Epoxy Primer (p51)

Code	To Mix	Ø mm
DLX120HF	103-S, 107F, 701-HB, 901-P	120/160
KR120HF	103-S, 107F	
WK120HF	104, 203-RM	



#### RMX Mixing Stand - Heavy Duty Pneumatic Mixing Aid

- » Holds the Collomix hand mixers for easy, safe mixing
- » Stable stand is foldable to allow easy transport and storage

Code	Max. Size	Weight	Max. Pail Height
RMX	455 x 455 x 1180	17kg	450mm



#### Mixing Buckets - High Quality Polyethylene Buckets

- » Mortar/mixing buckets with high stability and carrying capacity
- » Ideal for Collomix mixers

Code	Capacity	Transport Cart
MB30	30L	N/A
MB65	65L	TC1
MB90	90L	TC2



#### Transport Carts - For Large Volumes of Mixed Product

- » Engineered transport system for Collomix mortar and mixing buckets
- » Pneumatic tyres and locking devices for effortless moving and pouring

Code	Diameter	Bucket
TC1	580mm	MB65
TC2	680mm	MB90

### FEATURED PRODUCT - COLLOMIX MIXER CLEANING BUCKET

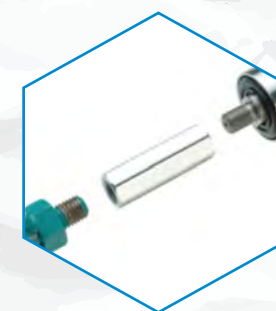
Compatible with the Collomix single and dual-paddle hand mixers (p18) as well as all standard mixers and paddles, the mixer cleaning bucket is pre-fitted with internal brushes to make cleaning up after a mixing job as simple as possible. An essential piece of kit for any project involving mechanical mixing.



#### Hexafix Fast Coupling - Adaptor for Standard Mixers

- » Converts standard mixers for use with Collomix mixing paddles (p20)
- » Easy to use, quick-release coupling
- » Included with Collomix mixers (p20) or also available as a separate item

Code	Thread Size	Paddle Type
CM15	Male M14	Collomix Range



#### M14 to M14 Adaptor - For Collomix Paddles/Mixers

- » Converts standard equipment for use with Collomix mixers/paddles (p20)
- » M14 to M14 adaptor is compatible between different equipment types
- » Available to order as a separate item

Code	Thread Size	Paddle Type
CM14	Female M14	Collomix/Standard M14



#### Mixer Cleaning Bucket - Easy Cleaning for Paddles

- » Easy cleaning system for paddles
- » Fits both single and dual paddles
- » Fast cleaning by placing the paddle into the water-filled bucket and running for a short time

Code	Size	Weight	Max. Ø of Paddle
MCB	30L	4.4kg	210mm

### PRE-BAGGED, RENDER & SCREED SYSTEM

The HydroCoat 1 System is a watertight, pre-bagged and one coat render and screed solution, designed to stop water ingress in existing, new-build and refurbishment basement structures.



#### HydroCoat 1 Render - One Coat Waterproofing Render

- » Pre-bagged and single-component waterproof render
- » Quick to apply as a one-coat render on vertical and overhead surfaces
- » Part of the HydroCoat 1 System

Code	Size	Coverage
HCR	25kg	1.45m² at 10mm thickness



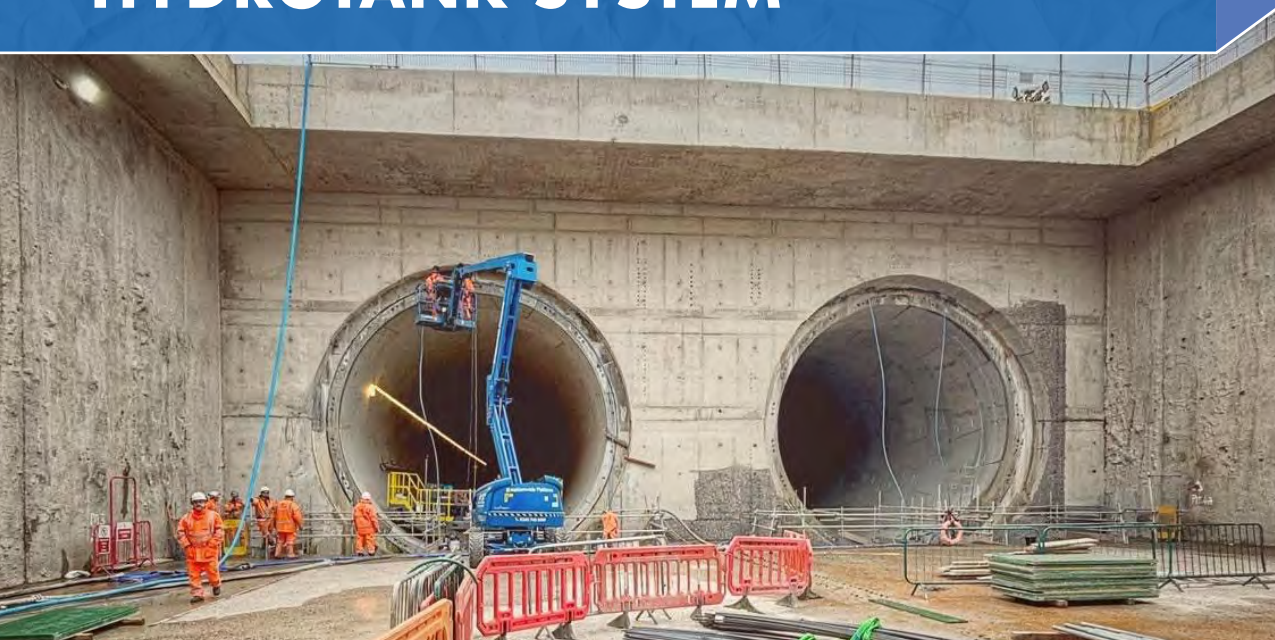
#### HydroCoat 1 Screed 2K - Self Levelling Cementitious Screed

- » Two-component screed for levelling and waterproofing concrete floors
- » Rapid-setting, durable and resistant to abrasion and trafficking
- » Part of the HydroCoat 1 System

Code	Size	Coverage
HCS	30kg	1.5m² at 10mm thickness



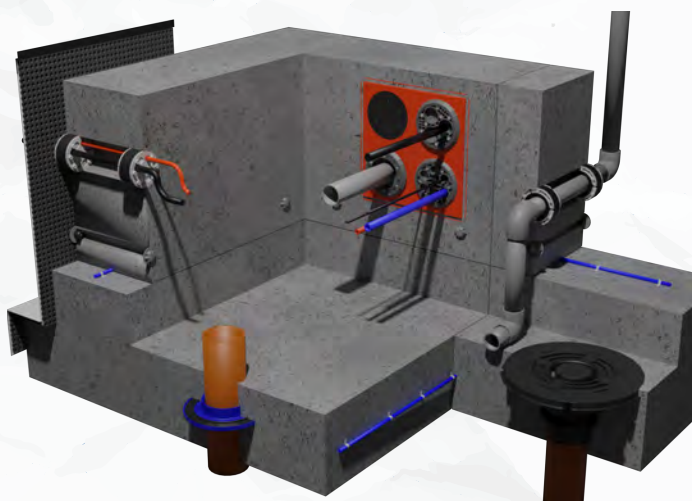
## TYPE B WATERPROOFING HYDROTANK SYSTEM



### TYPE B WATERPROOFING

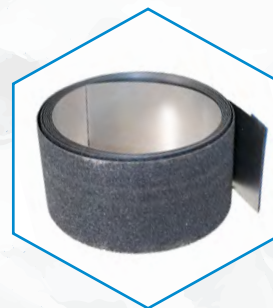
Defined by BS 8102:2022 as “structurally integral” protection where the structure is designed to be integrally waterproof and the primary resistance to water, this range of products protect the joints and penetrations through your Type B structure.

The Newton Type B range of products includes BDA certified waterbars as well as waterstops, injection resins, service entry seals, and patented tie-bolt hole seals that all achieve an effective and watertight Type B solution.



## WATERBARS AND WATERSTOPS

When seeking an integrally waterproof Type B structure, correctly installed waterbars and waterstops, can be used to effectively seal the joints and penetrations through the concrete.



### HydroTank 301-EP - Metal Construction Joint Waterbar

- » Waterproofing construction joints between concrete rafts and walls
- » Waterproof up to 5 bar water pressure
- » Can be installed in any weather and any temperature

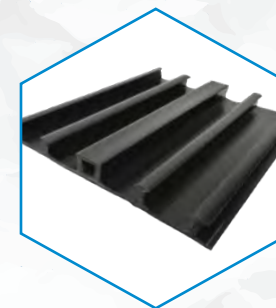
Code	Size	Colour
SX301	140mm x 6m	Silver/Black



### HydroTank 315 Waterbar - Polymer Swelling Waterbar

- » Seals against water in cast-in-place concrete & pre-cast construction joints
- » Swells up to 9 times its original size

Code	Size	Colour
315-2	20mm x 2mm x 20m	White
315-5	20mm x 5mm x 20m	
315-10	20mm x 10mm x 10m	



### HydroTank PVC Construction & Expansion Joint Waterstop

- » Cast-in-situ with no kicker or rebate
- » Durable & not temperature-sensitive

Products	Descriptions
External Waterstop	200mm/250mm x 12m
Internal Waterstop	200mm/250mm x 12m
Welding Blade	110V heating blade
Joining Jig	200mm/250mm Joining Jig

## WATERBAR ADHESIVE & MASTIC

Correct installation of waterbars is essential to their performance, as well as their ability to remain in place during the remainder of the concrete placement. Our choice of adhesives will do the trick.



### HydroTank 306 Swell Mastic - Swelling Adhesive

- » Swells in contact with water to 200% of its original size
- » For installing Newton waterbars, detailing HydroBond 403 (p14) and sealing protrusions

Code	Size	Colour	Application Rate
306	310ml	White	5.5 - 8.5 linear metres



### HydroTank 309 Flexible Adhesive - Durable Mastic

- » Flexible, non-swelling option for waterbars, CDM BaseBoard (p31) as well as general panels, frames and other similar elements
- » Bonds to most building materials

Code	Size	Colour
309-M	290ML	White



### TYPE B - STRUCTURAL WATERPROOFING

#### INJECTION HOSE & RESIN

This high-performance injection waterbar system is installed within and used for sealing construction joints in concrete structures. When injected with resin, the material penetrates into the concrete surrounding the hose to permanently seal the joint.



#### HydroTank 302 Injection Hose - Resin Injection Waterbar

- » Inject with resin to seal joints in earth-retaining concrete structures
- » Use with Leakinject 2K Flex 6811 LV
- » No concrete kicker or rebate required

Codes	Sizes	Colour
302K120	120m injection kit	Light Blue
302K60	60m injection kit	



#### Leakinject 2K Flex 6811 LV - Sealing of Wet or Dry Cracks

- » Two-component, low viscosity PU resin
- » Sealing wet or dry cracks, or use in HydroTank 302 Injection Hose
- » Permanent sealing of cracks

Code	Components	Weights
322	Two	(A) 12kg (B) 13.2kg



HydroTank 302 Injection Hose installed within the wall formwork prior to the concrete placement

### SERVICE ENTRY SEALING SYSTEMS

High-quality and high-performance sealing units, manufactured in Germany, for effective waterproofing and gas proofing of service entry and pipe penetrations through existing and new-build structures.



#### HSI Cable Entry System - Pressure Tight Wall Inserts

- » Installation in concrete for watertight and gas-tight seal up to 2.5 bar
- » Pressure-tight closing covers both sides
- » Seal using the HSI Cable Entry System Covers for maximum flexibility

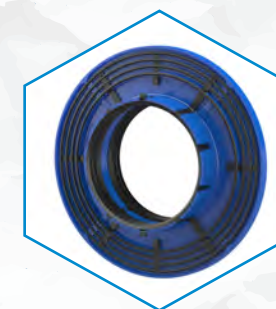
Sizes	Used to Seal
100mm to 500mm wall	Cables & ducts



#### HSI Cable Entry System - System Covers

- » Connects various ducting types to the HSI Cable Entry Wall Inserts
- » Bayonet system for mechanical sealing of smooth, corrugated & spiral ducting
- » Options for sealing multiple cables

Sizes	Used to Seal
110mm to 168mm diameter	Cables & ducts



#### KG-FIX Wall Collar - Water Barrier Flange for Pipes

- » Watertight barrier flange for waste pipes through floor slabs
- » Resists 2.5 bar water pressure
- » Radon tight
- » Fits 110, 125 and 160mm pipes

Used to Seal	Location
110, 125 & 160mm pipes	External seal



#### Mechanical Press Seals - With Segmented Ring Technology

- » For sealing all types of services in cored holes or wall sleeves
- » Split design allows for sealing around new and existing cables
- » Watertight, gas-tight and radon-tight

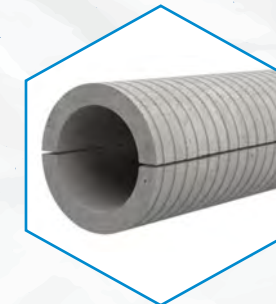
Sizes	Used to Seal
80mm to 500mm	Around services



#### Tundish Waste Pipe Entry - Floor Seal to Sewer Pipe

- » Seals through concrete floor slabs to the underground sewer pipe
- » Three-ribbed seal is gas-tight, radon-tight and watertight
- » Integrated level for alignment

Size	Used to Seal
385mm O/D	110mm Waste Pipes



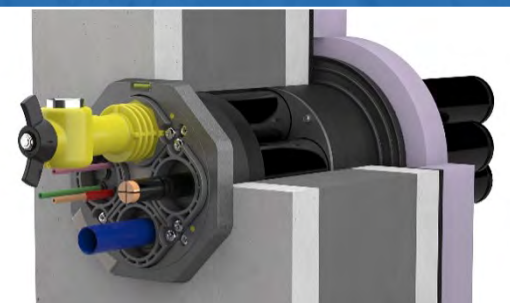
#### ZVR, FZR & FZRG Cement Coated Wall Sleeves

- » For seamless concrete seals that merge with the concrete walls
- » Split sleeve option for retrofitting
- » Can be cut to correct length on site
- » Watertight and gas-tight

Sizes	Used to Seal
80mm to 800mm	Service Entries

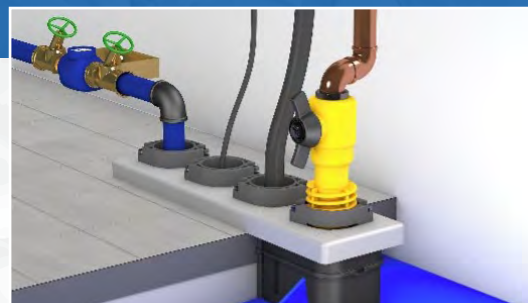


## SERVICE ENTRY SEALING SYSTEMS



### Building Service Entry Package for Wall Installations - MSH Polysafe BHP

- » Seals all supply lines effectively with just one entry point
- » Continuous duct connection up to the mains supply line
- » Integrated leak testing equipment
- » Watertight, gas-tight and radon-tight



### Building Service Entry Package for Floor Installations - MSH Basic FUBO

- » Seals all supply lines effectively with just one entry point
- » Continuous duct connection up to the mains supply line
- » Allows easy integration with the external membrane
- » Watertight and gas-tight

Sizes	Used to Seal
Sleeve/hole internal diameter 199-203mm	Multiple service entries through a wall

Sizes	Used to Seal
From 3 metres to 25 metres	Multiple service entries through a floor

## BESPOKE SERVICE-ENTRY SEALS FROM HAUFF-TECHNIK

We are the UK waterproofing specialist trade partner of Hauff-Technik, one of Europe's leading manufacturers of sealing systems for cables, pipes and building entries

If you require a customised sealing system for your structure, complete the details in the below table and call or email us to order a bespoke solution, manufactured specifically for your project.

Your custom solution from Hauff-Technik will guarantee absolute leak tightness, economic efficiency, user friendliness and durability in all kinds of construction work.

### Head Office

tech@newtonwaterproofing.co.uk  
01732 360095

### Leeds Branch

north@newtonwaterproofing.co.uk  
0113 521 6777

Quantity Required	Service Type	Outer Diameter of Service (mm)	Sleeve Size (mm)	Core Hole Diameter (mm)

## TIE-BOLT HOLE SEALING SYSTEMS

The RiveStop system offers a unique and patented method for sealing tie-bolt holes in concrete walls, delivering significant time and cost savings compared to traditional methods.



### RivePipe - Reusable Tie Bar Protection for Concrete Walls

- » Protects tie bars within the concrete
- » Removable, reusable and recyclable
- » Easily extracted with the RiveOut tool
- » Leaves a clean, uniform tie-bolt hole, ready to be sealed by a RiveStop unit

Lengths Available	Packaging
From 100mm to 300mm	100 units per bag



### RiveOut - Easily Removes RivePipes from Concrete

- » Screws into both sides of the RivePipe to safely extract it from the concrete
- » Extremely quick and easy to use
- » Leaves a clean, uniform and plastic-free tie-bolt hole

Length	Weight
415mm	2.62kg



### RiveStop - Concrete Tie-Bolt Hole Sealing

- » Patented rivet system for easily sealing tie-bolt holes
- » Expands up to 50% of original size to hermetically seal the tie-bolt hole
- » 90% faster than traditional methods

Diameters Available	Packaging
From 18mm to 35mm	Variable bucket quantities





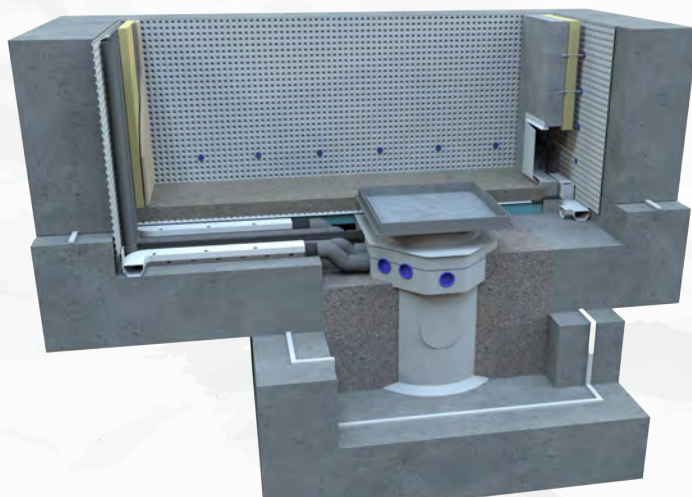
## TYPE C WATERPROOFING CDM SYSTEM



### TYPE C WATERPROOFING

Defined by BS 8102:2022 as “drained” protection, Newton’s Type C waterproofing system combines our decades of experience with top quality, BBA certified cavity drain membranes, supported by bespoke pumping, control, backup power and telemetry systems.

This maintainable waterproofing solution provides superior levels of protection, and is ideal for achieving a completely dry environment in both new-build and refurbishment projects.



## TYPE C - CAVITY DRAIN WATERPROOFING

### PROFESSIONAL CAVITY DRAIN MEMBRANES

Exclusively available to our network of specialist contractors (NSBCs) our ‘Pro’ cavity drain membranes are BBA approved and possess more test data and greater compressive loading.



#### Newton 503 - 3mm Cavity Drain Membranes

- » 3mm studs for when space is limited
- » Install below-ground internally as the wall membrane in basements, cellars, vaults and tunnels
- » High quality, BBA certified membrane

Code	Size	Colour	Area
NM5	2 x 20m	White/Clear	40m <sup>2</sup>



#### Newton 503 Mesh - 3mm Meshed Drainage Membrane

- » Meshed surface provides a key for lime mortars, renders, plasters or dabbed plasterboard
- » High quality, BBA certified membrane
- » 3.5mm deep for when space is limited

Code	Size	Colour	Area
NM11	2 x 20m	White/Clear	40m <sup>2</sup>



#### Newton 508R - 8mm Membrane & Gas Barrier

- » Heavier and stronger than standard 8mm cavity drain membranes
- » Certified as a barrier to ground gases and hydrocarbons

Code	Size	Colour	Area
M2R	2 x 20m	White	40m <sup>2</sup>
M1R	2.4 x 20m	White	48m <sup>2</sup>



#### Newton 508 Mesh - 8mm Meshed Drainage Membrane

- » Meshed surface provides a key for lime mortars, renders, plasters or dabbed plasterboard
- » High quality, BBA certified membrane
- » 8mm overall depth

Code	Size	Colour	Area
NM3	2 x 20m	White/Clear	40m <sup>2</sup>



#### Newton 508 Eco Floor - Recycled 8mm Membrane

- » The only 100% recycled 8mm cavity drain membrane with BBA certification
- » More studs per m<sup>2</sup> results in a higher compressive resistance with less loading to the substrate

Code	Size	Colour	Area
M2	2.5 x 20m	Black	50m <sup>2</sup>



#### Newton 520 Eco Floor - Recycled 20mm Membrane

- » 20mm depth with high drainage when severe water penetration is expected
- » 100% recycled and BBA certified
- » High, long-term compressive strength

Code	Size	Colour	Area
M4	2.07 x 20m	Black	40m <sup>2</sup>
M13	2.07 x 10m	Black	20m <sup>2</sup>



### CAVITY DRAIN WATERPROOFING MEMBRANES



#### CDM 503 - 3mm Cavity Drain Membrane

- » 3mm studs for when space is limited
- » Install below-ground internally as the floor/wall membrane in basements, cellars, vaults and tunnels
- » High quality, BBA certified membrane

Code	Size	Colour	Area
M5	2 x 20m	White/Clear	40m <sup>2</sup>



#### CDM 503 Mesh - 3mm Meshed Drainage Membrane

- » Meshed surface provides a key for lime mortars, renders, plasters or dabbled plasterboard
- » High quality, BBA certified membrane
- » 3.5mm deep for when space is limited

Code	Size	Colour	Area
M11	2 x 20m	White/Clear	40m <sup>2</sup>



#### CDM 508 - 8mm Cavity Drain Membrane

- » 8mm wall/floor cavity drain membrane
- » High quality, BBA certified membrane

Code	Size	Density	Area
M1-7-48	2.4 x 20m	700g/m <sup>2</sup>	48m <sup>2</sup>
M1-7-40	2 x 20m	700g/m <sup>2</sup>	40m <sup>2</sup>
M1-5-48	2.4 x 20m	500g/m <sup>2</sup>	48m <sup>2</sup>
M1-5-40	2 x 20m	500g/m <sup>2</sup>	40m <sup>2</sup>



#### CDM 508 Mesh - 8mm Meshed Drainage Membrane

- » Meshed surface provides a key for lime mortars, renders, plasters or dabbled plasterboard
- » High quality, BBA certified membrane
- » 8mm overall depth

Code	Size	Colour	Area
M3	2 x 20m	White/Clear	40m <sup>2</sup>



#### PAC-500 - 'Positive Air Curtain' System for Waterproofing and Gas Protection Combined

- » Combines the CDM System (p9) with a positive pressure system that prevents gases from entering the structure
- » Protects against radon, methane, CO<sub>2</sub> and hydrocarbons, petrol and diesel contamination, and water ingress
- » Uses the BBA approved 508R (p29) cavity drain membrane & gas barrier
- » Specialist installation only

Components	Page Number
» 508R Membrane	Page 29
» CDM MultiPlugs	Page 32
» CDM Joint Tape & CDM Rope	Page 32
» CDM OverTape	Page 32
» CDM BaseDrain & FloorDrain	Page 31
» Titan-Pro	Page 34
» Pressure Air Curtain (PAC) Unit	-

### FEATURED PRODUCT - CDM FIBRAN XPS 500-C

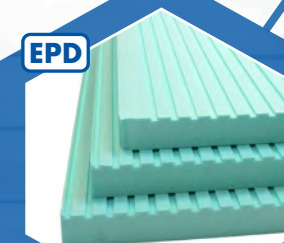
Designed for use within the CDM System, this closed-cell thermal insulation board is made from rigid extruded polystyrene foam (XPS). Laid adjacent to the drainage channels, the boards form a 50mm insulated spacer that is also third-party tested for its long-term compressive loading capacity.

#### INSULATION & DRAINAGE

A well installed drainage system with inspection ports ensures that the cavity drain system is maintainable, as it can be inspected and cleaned at regular intervals.

Utilising XPS insulation as a spacer also delivers design benefits, financial and environmental savings, ease of building, and energy efficiency improvements.

EPD



#### CDM Fibran XPS 500-C - Closed Cell Insulation

- » 50mm rigid extruded polystyrene (XPS) insulation board
- » Forms a 50mm spacer adjacent to CDM BaseDrain and FloorDrain
- » 500 kPa compressive strength

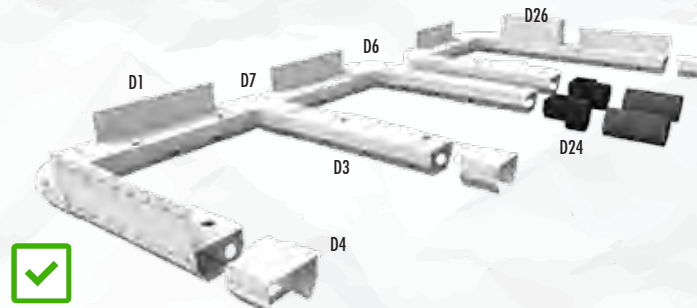
Code	Size	Pack Size
500C	50 x 1000 x 600mm	4.8m <sup>2</sup> (8 boards)



#### CDM Insulation Fixings - For Fixing Insulation Boards

- » Plug for mechanically fixing CDM Fibran XPS 500-C insulation boards to the concrete slab or raft
- » Ideal for where a lightweight floor finish will be above the insulation

Code	Size	Colour	Units
IF90	90 x 10mm	White	200



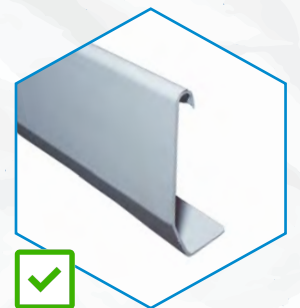
#### CDM BaseDrain & CDM FloorDrain - Drainage System

- » Receives water ingress then discharges it to a safe form of drainage, with cavity drain membranes (p29-30) and the CDM Pumping System (p34)

Code	Description	Colour
D1	CDM BaseDrain x 2m	White
D3	CDM FloorDrain x 2m	White

#### CDM BaseDrain & FloorDrain Components & Accessories

Code	Description	Colour
D4	CDM BaseDrain Connector	White
D6	CDM BaseDrain Corner	White
D7	CDM BaseDrain T-Piece	White
D22	CDM Basedrain Joint Tape	White
D24	CDM BaseDrain Adaptor	Black
D26	CDM BaseDrain Inspection Port Kit	White



#### CDM BaseBoard - Above Slab Drainage Conduit

Code	Product	Colour
D9/D10	Outside/Inside Corner	White
D11R/D11L	End Cap Right/Left	
D12	Length (2.4m)	
D12H	Hanger	
D13	Connector	
309-M	HydroTank 309 Adhesive	



### TYPE C - CAVITY DRAIN WATERPROOFING

#### PLUGS, TAPES & ANCILLARIES

To complement the core membrane, insulation and drainage components of the CDM System, it's important to have a choice of the right fixings, sealants and other ancillaries to ensure your system is installed to absolute perfection.



#### CDM MultiPlug - Cavity Drain Membrane Fixing Plug

- » Specialist fixing plug for securing the CDM System (p9) to the walls
- » Provides a fixing point for 5mm screws and Helical MultiPlug wall ties (p33)

Codes	Size	Description	Units
A1	10 x 57mm	Blue (orange washers)	100
A24		Blue (no washers)	



#### CDM NuSeal Plug - Fixing to Vaults and Soffits

- » A longer fixing than the CDM MultiPlug, sealed with CDM Rope
- » For fixing CDM System membranes to vaulted ceilings and sloping soffits

Code	Size	Description	Units
A2	70 x 11mm	Blue (no washers)	100
A3		Black (with washers)	

#### FEATURED PRODUCT - CDM 906 LIME INHIBITOR

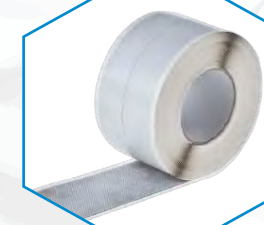
The leaching of free lime from fresh concrete can be incredibly problematic as it builds up in drainage channels and sump chambers, creating blockages and mechanical problems and prevents the passage of water. CDM 906 Lime Inhibitor is easily applied to stop the lime from leaching out of the concrete.



#### CDM 906 Lime Inhibitor - For New Concrete Surfaces

- » Applied to concrete prior to installing the CDM System (p9)
- » Prevents free lime leaching from concrete into the drainage system
- » Extremely easy to install

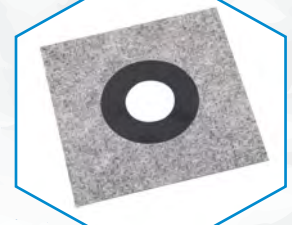
Code	Size	Colour	Application Rate
906	1L	White	100m <sup>2</sup> per litre



#### Mesh Tape - Sealing Over Meshed Membrane Joints

- » Single-sided sealing tape with a meshed upper surface
- » Used the same as CDM OverTape but to meshed CDM System membranes where a meshed surface is required

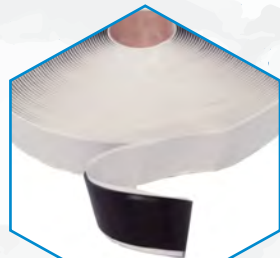
Code	Size	Colour	Units
A25	100mm x 10m	White	1



#### Pipe Collar - Preformed Flexible Pipe Seal

- » Flexible pipe seal for pipes from 75-110mm in diameter
- » For sealing the junction between the flat surface of CDM System membranes and protruding pipes

Code	Suitable for	Colour	Units
A35	75 - 110mm pipes	Blue	1



#### CDM Joint Tape - Sealing Within Membrane Joints

- » Double-sided butyl sealing tape
- » When overlapping CDM System membranes, use the tape to seal the flanged and the stud-into-stud laps between adjacent sheets

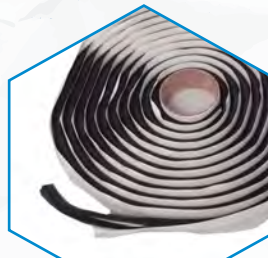
Code	Size	Colour
A5	30mm x 2mm x 22.5m	Black



#### CDM OverTape - Sealing Over Membrane Joints

- » Single-sided butyl sealing tape
- » Used for reinforcing over membrane joints and detailing around protrusions through unmeshed Type C membranes

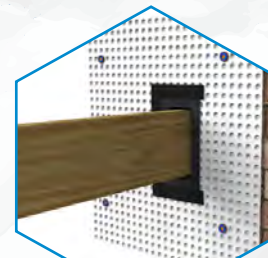
Code	Sizes	Colour	Units
A7	150mm x 20m	Black	2
A8	100mm x 20m	Black	4



#### CDM Rope - Sealing Around NuSeal Plugs

- » 10mm wide bead of butyl
- » Use a small quantity to form a sealing grommet at the base of the CDM NuSeal Plug when fixing CDM System membranes to vaults and soffits

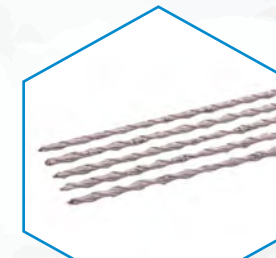
Code	Size	Colour
A6	10mm x 10mm x 4.75m	Black



#### Newtonite Joist Liners & Newtonite Pipe Sleeves

- » Pipe sleeve BX3 - Preformed seal for 110mm O/D waste pipe entries
- » Joist liner BX4 - Made-to-measure lining for steel or timber joist ends

Code	Size	Colour	Units
BX3	Fits 110mm pipe	Black	1
BX4	Made to order	Black	1



#### CDM Helical MultiPlug Tie - Tie Walls into the MultiPlug

- » Range of wall tie lengths for use with the CDM MultiPlug fixing plug (p32)
- » Supplied with hand fixing tool (WTT)

Code	Lengths	Colour	Units
WT + Size	155, 170, 195, 220, 245, 270, 295, 325 mm	Stainless Steel	100



#### HydroTank 309 Flexible Adhesive - Durable Mastic

- » Flexible, non-swelling option for waterbars (p23), CDM BaseBoard (p31) as well as general panels, frames and other similar elements
- » Bonds to most building materials

Code	Size	Colour
309-M	290ML	White



### TYPE C - CAVITY DRAIN WATERPROOFING

#### CDM SUMP & PUMP SYSTEMS

Our bespoke cavity drain pumping systems incorporate the specially designed Titan-Pro sump chamber for cavity drain membrane systems, and pairs it with class-leading pumps both in automatic and manual versions, and with multiple options for pumping power.

#### SUMP CHAMBERS

If you only need a chamber or want to order your pumps separately, choose from a drilled or undrilled chambers, with or without a lid.

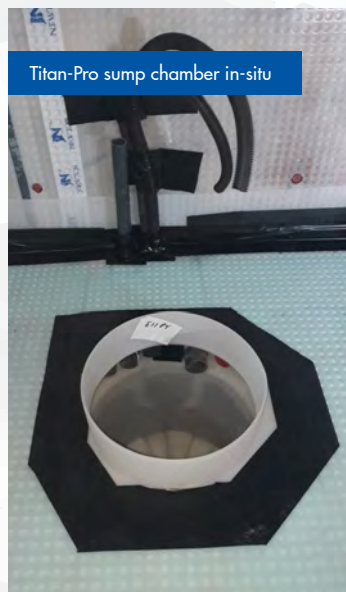
Code	Drilled	Lid	Description
TPC	No	No	Titan-Pro Sump Chamber only
TPCD	Yes	No	Titan-Pro Sump Chamber - Drilled
TPC&L	No	Yes	Titan-Pro Sump Chamber with Lid
TPCD&L	Yes	Yes	Titan-Pro Sump Chamber with Lid & Drilled

#### SUMP CHAMBERS WITH PUMPS

Automatic pumps are supplied with Vertical Float Switches that allow flexible switching for each pump. Manual pumps must be matched to a control panel.

Code	Pumps	Pump Type	Alarm Included?	Rising Mains
CDM1	2 x TAS250	Automatic	High Water Level Alarm	1
CDM2	2 x CP250	Manual*	No	1
CDM3	2 x CP400	Automatic	High Water Level Alarm	1
CDM4	2 x CP400	Manual*	No	1
CDM5/E	2 x NP400 eco	Manual*	No	1
CDM6/E	2 x NP400 eco	Automatic	High Water Level Alarm	1
CDM11/E	2 x NP750 eco	Automatic	High Water Level Alarm	1
CDM12/E	2 x NP750 eco	Manual*	No	1
CDM13/E	2 x NP750 eco	Automatic	High Water Level Alarm	2
CDM14/E	2 x NP750 eco	Manual*	No	2

\*Control panel is not included. See page 35 for pump control panel options.



Titan-Pro sump chamber in-situ

#### FEATURED PRODUCT - NEX-CDM CONTROL PANEL

Smart control panel for dual single-phase pumps in groundwater and wastewater applications. Remote monitoring is available, as well as intelligent system fault detection to warn of clogged pumps, shaft or impeller damage, check-valve failure, broken rising main, dry running, and pump overheating.

#### PUMP CONTROL & ALARM SYSTEMS

Choose from a range of control panels to operate, maintain and monitor your pumping system, as well as enhanced capabilities to link into whole house monitoring systems, detect high water levels, and alert clients to alarm events.



#### NEX-CDM Dual Pump Panel for Surface/Ground Water

- » High level and pump fault alarm
- » Weekly pump test run function
- » Pairs with the Cerbo GX (below)

Code	No. of Floats	Power Supply
NEX-CDM	1 x vertical water level float & 1 x alarm float	230V AC (mains or inverter)



#### NEX-F Dual Pump Panel for Foul Water

- » High level and pump fault alarm
- » Weekly pump test run function
- » Pairs with the Cerbo GX (below)

Codes	No. of Floats	Power Supply
NEX-F2 NEX-F3 NEX-F4	Two floats Three floats Four floats	230V AC (mains or inverter)



#### Pump Controller - Twin Pump Panel for Manual Pumps

- » For use with matched pairs of manual pumps from 250-750 Watts (p39)
- » Sophisticated and simple-to-install twin pump control system
- » Automatically tests pumps every 7 days

Code	Size	Power Supply
CP9	300 x 194 x 58mm	230V AC



#### High Water Level Alarm - Use with Titan Sump Chambers

- » Detects high water levels in chambers and sounds a 90 dB alarm if activated
- » For single or twin pump systems where no control panel is installed
- » Battery-operated - standard 9V battery

Code	Size	Power Supply
PA50	152 x 92 x 37mm	9V DC Battery Supplied



Dual NEX-CDM panels installed



### TYPE C - CAVITY DRAIN WATERPROOFING

#### BATTERY BACKUP KITS FOR YOUR PUMP SYSTEM

Ensure that your pumping system will always continue to operate, even during power outages, by delivering battery stored DC energy to our range of powerful inverters, turning it into clean and efficient 230-volt AC power for the pumps.



#### 500VA Power Inverter Kit - Victron MultiPlus 12/500/20

- » Includes 500VA Inverter, switches, RCD, cables, battery caps & bolts
- » Ensure continued operation of pump systems during power disruption
- » Matched with 40-200 Ah batteries

Code	Name	Size (mm)
BB5K	MultiPlus 12/500/20	311 x 182 x 100



#### 800VA Power Inverter Kit - Victron MultiPlus 12/800/35

- » Includes 800VA Inverter, switches, RCD, cables, battery caps & bolts
- » Ensure continued operation of pump systems during power disruption
- » Matched with 40-200 Ah batteries

Code	Name	Size (mm)
BB1K	MultiPlus 12/800/35	360 x 240 x 100



#### 1600VA Power Inverter Kit - Victron MultiPlus 12/1600/70

- » Includes 1600VA Inverter, switches, RCD, cables, battery caps & bolts
- » Ensure continued operation of pump systems during power disruption
- » Matched with 40-200 Ah batteries

Code	Name	Size (mm)
BB11K	MultiPlus 12/1600/70	470 x 265 x 100



#### Batteries - 40, 60, 100 & 200Ah High Grade Batteries

- » Single units or battery banks provide 12V power to the Victron Inverter

Codes	Amp Hours	Power	Weight
BB23	40Ah	12V DC	13kg
BB20	60Ah		18kg
BB21	100Ah		33kg
BB22	200Ah		61kg



### FEATURED PRODUCT - CERBO GX

A complete communication centre, providing full control and monitoring of your system from wherever you are in the world. Instantly monitor the battery state, check tank levels and temperature measurements, follow up on alerts, perform diagnostic checks and resolve challenges, all fully remotely.

#### TELEMETRY & MONITORING ANCILLARIES

A number of sophisticated options are available to add to the Victron Inverter units (p33) and provide a host of features for both controlling and monitoring your battery backup system.



#### BMV-712 - Smart Battery Monitor

- » Bluetooth capability allows real-time battery monitoring via smartphone
- » Ensures future connectivity as and when all Victron components are also upgraded to include Bluetooth

Code	Dimensions	Supply Voltage
BB6	69 x 69mm Front Bezel	6.5-70V DC



#### Cerbo GX - Cloud Connected Control Centre

- » Allows full control over battery backup system, wherever you are
- » Connect remotely via the cloud portal using the GX Touch, or via the VictronConnect app

Code	Dimensions (mm)	Supply Voltage
BB12	H78 x W154 x D48	8-70V DC



#### Smartshunt - All-in-One Bluetooth Battery Monitor

- » All-in-one alternative to the BMV, delivering information to your phone via the VictronConnect app
- » Connects to the Cerbo GX control centre which can also read this unit

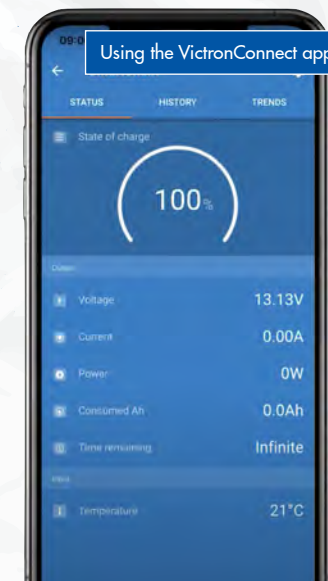
Code	Dimensions	Supply Voltage
BB15	H46 x W120 x D54mm	6.5-70V DC



#### GX Touch - Touch Screen Display for the Cerbo GX

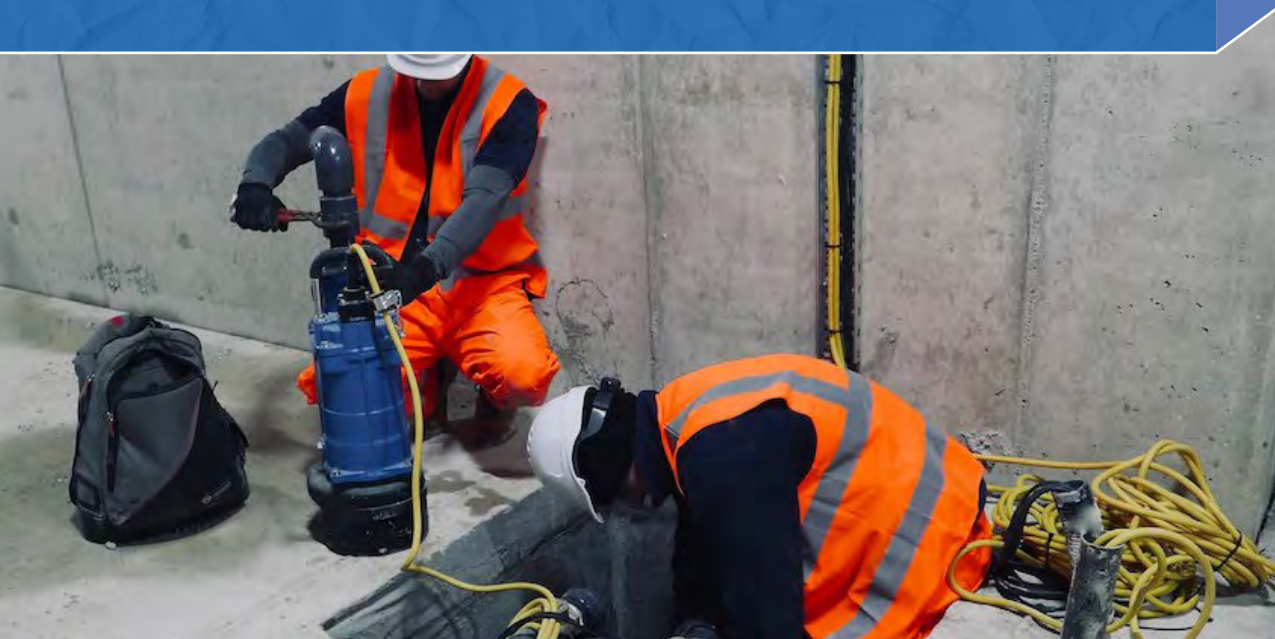
- » Screen display for the Cerbo GX
- » Five inch touch screen provides instant system overview and adjustment
- » Simple to install and waterproof

Code	Description	Further Information
BB13	GX Touch 50	Supply Voltage: 8-70V DC H87 x W128 x D12.4 mm
BB14	Wall Mount	





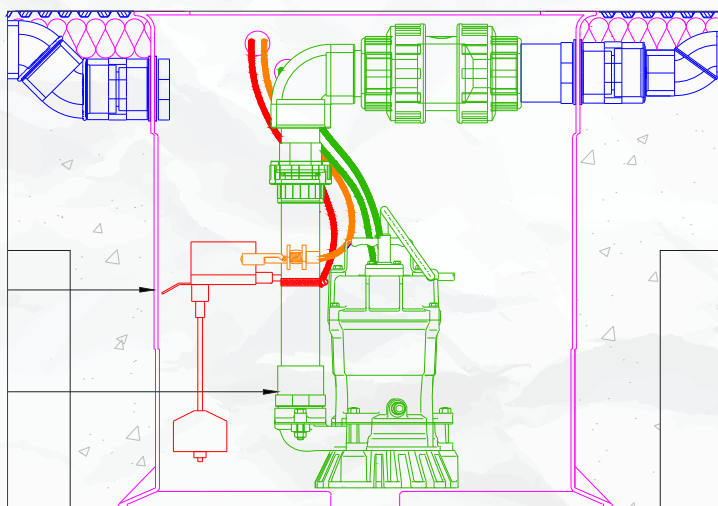
## PUMPS & PUMPING SYSTEMS



### SUMP & PUMP SYSTEMS

A sump and pump system is a combination of a water-collecting sump chamber and one or more submersible pumps that are installed within the chamber to remove the captured water. Sump and pump systems are commonly found in basements where a cavity drain membrane system has been installed.

Depending on the scenario, the water being removed will either be discharged to a safe natural drainage point, or into another appropriate means of drainage.



## INDIVIDUAL PUMP UNITS

Manual and automatic pump options suitable for clean water, ground water, surface water and waste water, available with warranties of 3 or 5 years when serviced annually by an approved engineer.



### NP eco - Energy-Efficient, 400W Ground Water Pump

- » Max. flow rate of 280 L/minute
- » Max. pumping head of 12 metres
- » Automatic version has a vertical float switch to control the pump

Codes	Description	Discharge Size
NP4A	400W - Automatic	2" Female BSP
NP4M	400W - Manual	



### NP eco - Energy-Efficient, 750W Ground Water Pump

- » Max. flow rate of 333 L/minute
- » Max. pumping head of 15.7 metres
- » Automatic version has adjustable vertical float switch to control pump

Codes	Description	Discharge Size
NP7A	750W - Automatic	2" Female BSP
NP7M	750W - Manual	



### FEKA VS 1000 - Submersible Pump for Lifting Waste Water

- » High-quality, stainless steel pump
- » Pumps waste water including solid matter up to 50mm in size
- » Pumps volumes from 0 to 32 m<sup>3</sup>/hour up to a 14-metre head

Code	Description	Discharge Size
P64	1000W - Manual	2"



### TAS250 - High Quality 250W Clean Water Pumps

- » Removes ground water from basements, light wells, patios & terraces
- » Ideal for use in smaller sumps, such as the Titan chamber (p41)

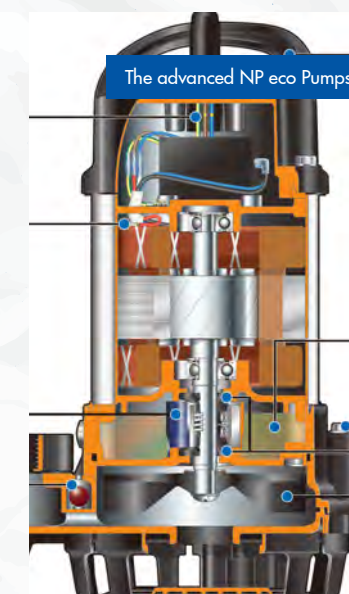
Code	Description	Discharge Size
TAS250A	250W - Automatic	1.5" BSP
TAS250M	250W - Manual	



### DAB Genix - Automatic Macerator Lifting Station

- » Ideal for new bathroom or kitchen installations requiring efficient removal of waste water

Codes	Size	Weight
P67 - Comfort 130	351 x 629 x 178mm	12kg
P68 - 130	351 x 629 x 178mm	12kg
P69 - VT 030	346 x 456 x 178mm	10.3kg





## PUMPS & PUMPING SYSTEMS

### SURFACE AND/OR FOUL WATER SUMP & PUMP SYSTEMS

Trojan-Pro sump chamber



#### DUAL-PUMP FOUL WATER SYSTEMS

Includes sump chamber, lid and frame, dual pumps, pump control panel, 3 x paddle floats, 2" non-return valve, 2" internal uPVC pipe and fittings, guide rails, auto coupling stools, and lifting chains.

Chamber	Pumps	Auto or Manual	Rails or Free-Standing	Code
1.2m	DAB FEKA VS 1000	Manual	Free-Standing	F1
1.2m	DAB FEKA VS 1000	Manual	Rails	F2
1.5m	DAB FEKA VS 1000	Manual	Free-Standing	F3
1.5m	DAB FEKA VS 1000	Manual	Rails	F4
1.8m	DAB FEKA VS 1000	Manual	Rails	F5
2.1m	DAB FEKA VS 1000	Manual	Rails	F6

#### DUAL-PUMP SURFACE WATER SYSTEMS

- Codes S1 to S4 include sump chamber, lid and frame, dual pumps, control panel, and 50mm internal uPVC pipe and fittings.
- Codes S5 to S8 include sump chamber, lid and frame, dual pumps, pump control panel, 50mm internal uPVC pipe and fittings, guide rails, auto coupling stools, and lifting chains.

Chamber	Pumps	Auto or Manual	Rails or Free-Standing	Code
1.2m	CP400 x 2	Automatic	Free-Standing	S1
1.2m	CP400 x 2	Manual	Free-Standing	S2
1.5m	CP400 x 2	Automatic	Free-Standing	S3
1.5m	CP400 x 2	Manual	Free-Standing	S4
1.5m	NP750 x 2	Manual	Rails	S6
1.8m	NP750 x 2	Manual	Rails	S7
2.1m	NP750 x 2	Manual	Rails	S8

### FEATURED PRODUCT - SURFACE & FOUL WATER PUMP STATIONS

The Trojan-Pro is a medium-sized sump chamber available in four sizes, ranging from 1.2m to 2.1m high. Depending on the pumps used, the Trojan-Pro is suitable for a variety of pumping tasks, from lifting sewage from basements as well as the removal of ground water and surface drainage.

### GROUND AND/OR SURFACE WATER SUMP & PUMP SYSTEMS

Titan sump chamber



#### CHAMBERS

Code	Lid Included?	Description
T2C	No	Titan Sump Chamber only
T2C&L	Yes	Titan Sump Chamber - Drilled

#### GROUND AND SURFACE WATER SYSTEMS

Code	Pump Model	No. of Pumps	Auto or Manual	Rising Mains	Alarm Included
T1	MAS250	1	Automatic	1	PA50
T2	TAS250	1	Automatic	1	PA50
T3	TAS250	2	Automatic	1	PA50
T4	CP400	2	Automatic	1	PA50

### FOUL WATER SUMP & PUMP SYSTEMS

We can also provide bespoke and large-diameter pumping systems for foul and surface water applications.

Quotes and further details available on request - contact the Newton Waterproofing Systems Technical Team for further information.

**Head Office**  
tech@newtonwaterproofing.co.uk  
01732 360095

**Leeds Branch**  
north@newtonwaterproofing.co.uk  
0113 521 6777

Newton provide specialist advice on large and foul water pump systems





## DAMP PROOFING NEWTONITE SYSTEM



### DAMP PROOFING

Damp issues take many forms, from rising damp to penetrating and hygroscopic damp, all of which require correct identification and treatment.

All forms of damp can cause problems to internal wall finishes and contribute to an unhealthy environment within your property. A permanent solution, which combines the correct Newton damp proofing products in order to effectively combat the source of the problem, is therefore essential.



## ABOVE-GROUND DAMP PROOFING MEMBRANES

Whatever the cause of the damp problem, the Newtonite damp proofing membrane system can provide a permanent and effective solution, isolating and protecting your internal space from the damp walls.



### Newtonite - 3mm Damp Proofing Membrane

- » For above ground scenarios where a meshed surface is not required
- » Isolates internal walls from damp
- » 3mm deep to maximise internal space
- » Doesn't require extensive preparation

Codes	Sizes	Colour	Area
M20	2 x 20m	White/Clear	40m <sup>2</sup>



### Newtonite Lath - 3mm Meshed Damp Membrane

- » BBA certified with a rot-proof mesh for plaster, render or dot & dab boards

Codes	Sizes	Colour	Area
M9	1.2 x 10m	White/Clear	12m <sup>2</sup>
M16	1 x 10m		10m <sup>2</sup>
M21	1 x 20m		20m <sup>2</sup>
M22	2 x 20m		40m <sup>2</sup>



Newtonite Lath in a residence

## DAMP PROOFING ANCILLARIES

A selection of specialist ancillary products that are critically important for the correct installation of Newtonite System membranes, including fixing to different substrates, sealing the membranes and dealing with protrusions.



### Newtonite 801 Mastick - Sealing Around Fixing Holes

- » Applied to Newtonite System plugs (p44) to seal membrane penetrations
- » Prevents a 'bridge' between the damp substrate and the new internal surface
- » Applicable to most building materials

Code	Size	Colour	Units
A18	0.31 litre tube	White	1



### CDM MultiPlug - Damp Proof Membrane Fixing Plug

- » Specialist fixing plug for securing the Newtonite System to the walls
- » Provides a fixing point for 5mm screws and Helical MultiPlug wall ties (p33)

Codes	Size	Description	Units
A1	10 x 57mm	Blue (orange washers)	100
A24		Blue (no washers)	



### DAMP PROOFING - NEWTONITE SYSTEM



#### Newtonite Plug - Fixing Newtonite Membranes

- » For fixing Newtonite Mesh (p43) to internal, above-ground walls
- » Use a 7mm SDS bit to drill a hole before hammering in the plug
- » Seal with Newtonite 801 Mastic (p43)

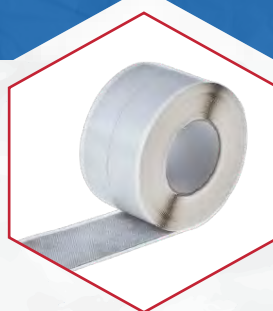
Code	Size	Colour	Units
A16	7 x 50mm	Blue	200



#### Newtonite Cob Plug - Fixing to Less Stable Substrates

- » For fixing Newtonite System damp proofing membranes (p43) to less stable substrates
- » The expansion pin can be fitted to the plug to gain better traction

Code	Size	Colour	Units
IF90	10 x 90mm	White	200



#### Mesh Tape - Sealing Over Meshed Membrane Joints

- » Single-sided sealing tape with a meshed upper surface
- » Use the same as CDM OverTape but to meshed CDM System membranes where a meshed surface is required

Code	Size	Colour	Units
A25	100mm x 10m	White	1



### FEATURED PRODUCT - ELECTRICAL PATRESS BACK BOX LINERS

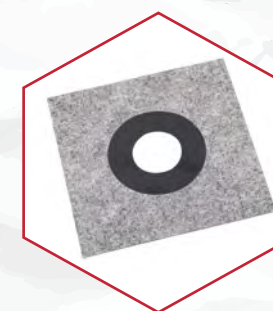
Waterproof linings for both single- and double-sized electrical pattress boxes. Formed from a single piece of plastic to avoid joints that might leak, they are simply sealed to the wall membrane with CDM Joint Tape (p30), and sealed with CDM OverTape (p30) or Mesh Tape (p44) to meshed membranes.



#### Tarmac Whitewall - Plaster for Meshed Membranes

- » The best finishing plaster to apply to our Newtonite mesh membranes (p43)
- » Provides a smooth white finish that is both hard and durable
- » Applied in two coats of 6mm each

Code	Size	Colour	Application
A11	25kg	White	13-15 kg/m <sup>2</sup>



#### Pipe Collar - Preformed Flexible Pipe Seal

- » Flexible pipe seal for pipes from 75-110mm in diameter
- » For sealing the junction between the flat surface of CDM System membranes and protruding pipes

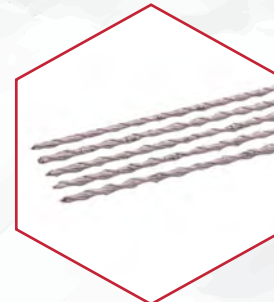
Code	Suitable for	Colour	Units
A35	75 - 110mm pipes	Blue	1



#### Back Box Liners - Lining for Electrical Pattress Box

- » Waterproof lining for single and double sized pattress boxes
- » Ensures the continuity of the membrane behind the box

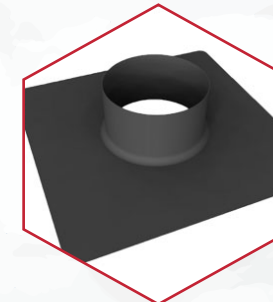
Code	Size	Dimensions	Units
BX1	Single Box	134 x 134 x 35mm	1
BX2	Double Box	200 x 134 x 35mm	



#### CDM Helical MultiPlug Tie - Tie Walls into the MultiPlug

- » Range of wall tie lengths for use with the MultiPlug fixing plug (p43)
- » Supplied with hand fixing tool (WTT)

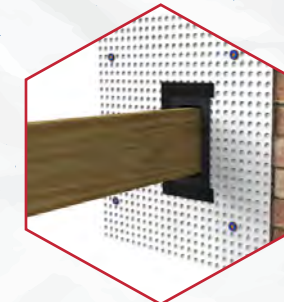
Code	Lengths	Colour	Units
WT + Size	155, 170, 195, 220, 245, 270, 295, 325 mm	Stainless Steel	100



#### Newtonite Pipe Sleeve - Preformed for 110mm Pipe

- » Waterproof sleeve for 110mm O/D waste pipe entries/protrusions through wall or floor membranes
- » Seal with CDM Joint Tape and over-seal with CDM OverTape (p32)

Code	Size	Colour	Units
BX3	Fits 110mm pipe	Black	1



#### Newtonite Joist Liner - Lining for Steels & Joist Ends

- » Made to measure waterproof lining for steel/timber joist ends, ensuring the membrane continuity behind the joist
- » Seal with CDM Joint Tape and over-seal with CDM OverTape (p32)

Code	Size	Colour	Units
BX4	Made to order	Black	1

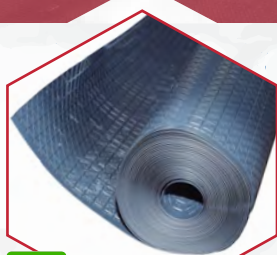


## DAMP PROOFING DAMPSAFE SYSTEM



### FLOORING & TILING MEMBRANES

Membranes ranging from 1mm to 3mm in depth, with the additional option for a tile decoupling mat.



#### DampSafe 601 Slimline - Loose Laid Floor Membrane

- » Isolates moisture sensitive flooring from dampness in concrete floor slabs
- » Can be used as the floor membrane as part of the CDM System (p9)
- » Also applicable as a high-load DPC

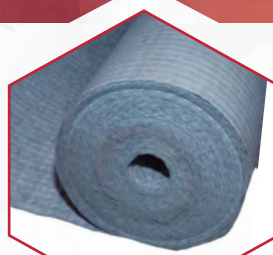
Code	Size	Colour	Area
M6	2.08 x 20m	Grey	40m <sup>2</sup>



#### DampSafe 603 - 3mm Loose Laid Flooring Membrane

- » Suitable for above new & existing floors
- » Does not transfer substrate movement to the floor finish above
- » High compressive loading stability
- » Ideal for high performance sports floors

Codes	Sizes	Colour	Area
M23	2 x 20m	White/Clear	40m <sup>2</sup>



#### DampSafe 603 Tile - Tiled Floor Decoupling Mat

- » Isolates tiled floors from cracking or movement in the substrate
- » Dimpled membrane ventilates substrate and equalises vapour pressure
- » Adds only 3mm to the floor finish

Code	Size	Colour	Area
M7	1 x 30m	White & Blue	30m <sup>2</sup>

## DPCs & DPMs

A choice of physical and liquid-applied Damp Proof Courses (DPCs) and Damp Proof Membranes (DPMs), applicable as moisture/vapour barriers, as well as slip, screeding or curing membranes.



#### DampSafe 802-DPM - 1200 Gauge DPM

- » Installed below concrete floors/screeds where no water pressure is expected
- » Suitable as a DPM, vapour barrier, or a slip, screeding or curing membrane
- » Easy to install as loose-laid membrane

Code	Size	Thickness	Area
802-12	4 x 25m	300 microns	100m <sup>2</sup>



#### DampSafe 809-HP DPC - High Performance Polymeric DPC

- » Compatible with all common building materials and all different DPC designs
- » Extremely tough and durable

Code	Widths (mm)	Length	Colour
809-Width	100, 150, 225, 300, 337.5, 450, 600, 900	20m	Black



#### Epoxy DPM - Damp Tolerable Membrane

- » Provides a DPM/vapour barrier to damp, non-porous concrete & screeds
- » Can be applied to damp concrete or screed just 7 days after placement

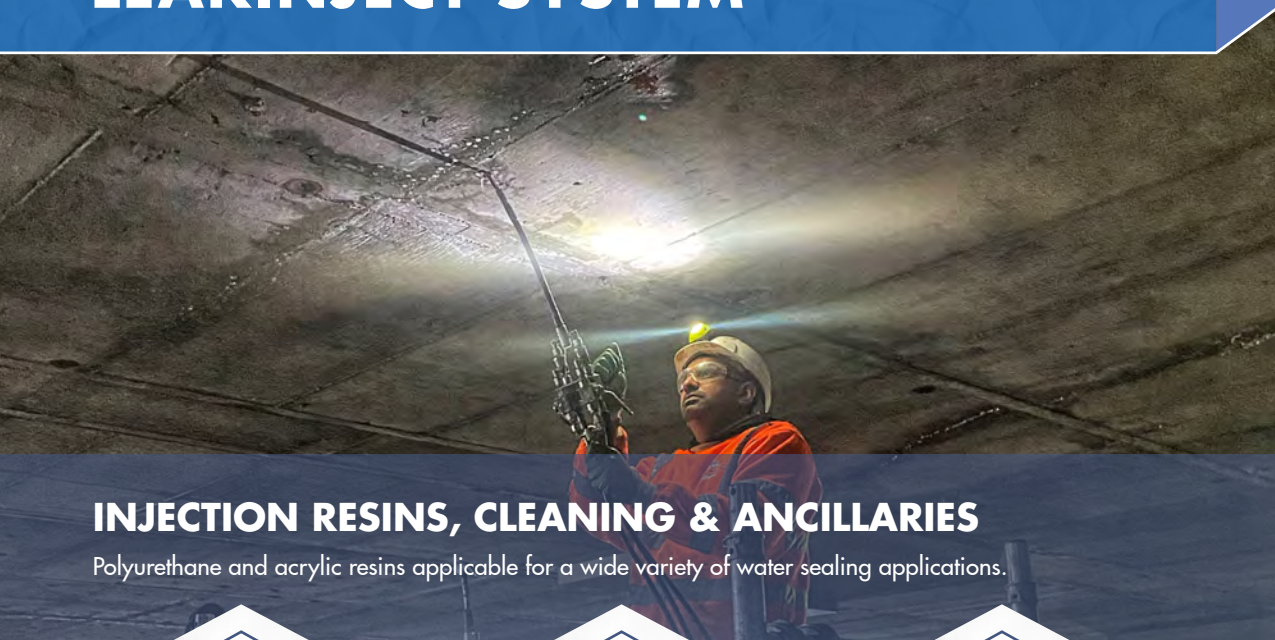
Code	Size	Colour	Application Rate
810-5	5.2kg	Black	1st coat 0.35kg/m <sup>2</sup> 2nd coat 0.20kg/m <sup>2</sup>



DampSafe 603 Tile isolates tiled floors from cracking or movement, and adds only 3mm in depth



# LEAK SEALING LEAKINJECT SYSTEM



## INJECTION RESINS, CLEANING & ANCILLARIES

Polyurethane and acrylic resins applicable for a wide variety of water sealing applications.



### Leakinject 2K Flex 6811 LV - Sealing of Wet or Dry Cracks

- » Two-component, low viscosity PU resin
- » Sealing wet or dry cracks, or in the HydroTank 302 Injection Hose (p24)
- » Permanent sealing of cracks

Code	Components	Weights
322	Two	(A) 12kg (B) 13.2kg



### Leakinject Hydrogel 6880 - Ready-to-Use PU Resin

- » Single-component, low viscosity PU
- » Used to stop leaks and water ingress, both pressurised and non-pressurised, in masonry and concrete
- » Reacts with water into a flexible foam

Code	Components	Weight
321	One	25kg



### Leakinject UNI 6816 E - High Foaming & Fast Reacting PU

- » Single-component, low viscosity PU
- » Used to seal large gaps, cracks or leaks with high pressure or flow
- » Reacts to create a semi-rigid foam

Code	Components	Weights
320	Resin Catalyst	25kg 2.3kg



### Leakplug - Single-Use Sealing Kit for Pipes & Conduits

- » PU kit for water sealing in electrical lines, pipes, ducts, conduits, etc.
- » Kit contains protective gloves

Code	Components	Weights
Leakplug	PU Resin Catalyst Polyester fibres	0.5kg 50ml 40g



### 509 Rubber Acryl - Highly Elastic Acrylic Resin

- » Ideal for sealing movement joints

Code	Components	Weights
324	Acrylic Resin Additive Catalyst Strengtheners Initiator	24.91kg 0.09kg 2.5kg 23.7kg 0.625kg



### 509 Z Acryl - Elastic & Low Viscosity Acrylic Resin

- » Sealing of cracks/voids in walls, floors, concrete and underground
- » Fine cracks & variable water tables

Code	Size	Units
323	Acrylic Resin Catalyst Initiator	25kg 1.25kg 0.06kg



### Leakinject Steel Packers - Two-Part Injection Packers

- » Suitable for use with both acrylic and polyurethane injection resins
- » Two sizes available as standard, but specialist sizes can also be provided

Code	Size	Colour
P-NH-10-110	10mm x 110mm	Silver/Black
P-NH-13-110	13mm x 110mm	Silver/Black



### HydroTank Ecoclean - Eco Friendly Cleaning Agent

- » Flushing through/cleaning PU injection resin pumps during and after pumping
- » Removes uncured polyurethanes
- » Suitable for all Newton polyurethane injection resins

Code	Components	Weight
340	One	10kg



### HydroTank PU Cleaner - PU Resin Solvent Cleaner

- » Cleans cured resin from injection resin pumps once pumping is complete
- » Suitable for use with all polyurethane injection resins
- » Can be filtered and reused

Code	Components	Weight
341	One	10kg



### INJECTION PUMPS



#### Two-Component Pump for Acrylic Resins

- » For pumping two-component acrylic resins when making structural repairs
- » Durable and easily maintained
- » 1:1 fixed mixing ratio
- » Adjustable pressure

Code	Max. Pressure	Max. Capacity
BMP80.25	200 bar	4.8L/min



#### Grouting Piston Pump for Polyurethane Resins

- » For pumping PU resins when injecting resins for structural repairs
- » Easy-to-use, drill-powered pump
- » Supplied with adaptor for drill

Code	Max. Pressure	Delivery Capacity
IVS-5	250 bar (without regulation)	0.75L/min depending on viscosity



#### MP455 1C Electric Piston Pump for Injection Resins

- » For injecting either single-component PU resins, or the two-component Leakinject 2K Flex 6811 LV (p48)
- » Adjustable pressure
- » Operates without a compressor

Code	Weight	Max. Pressure	Max. Flow Rate
MP455	17kg	227 bar	1.8L

### PIPE, DUCT & STRUCTURAL LEAK SEALING

If you are experiencing leaks either through your new or existing structure, or through pipe conduits and service entries, these products provide a quick, effective and robust seal to permanently plug the leak.



#### Stopaq 2100 Aquastop - Pipe Sealant for Service Ducts

- » Sealing within/around service entries against water, gas and water vapour
- » Immediate seal - no curing time
- » Flexible to movement & new inserts

Code	Packaging	Colour
SX308	Stopaq 2100 = 0.53kg/0.4L Stopaq Mortar = 0.5kg/0.6L	Green

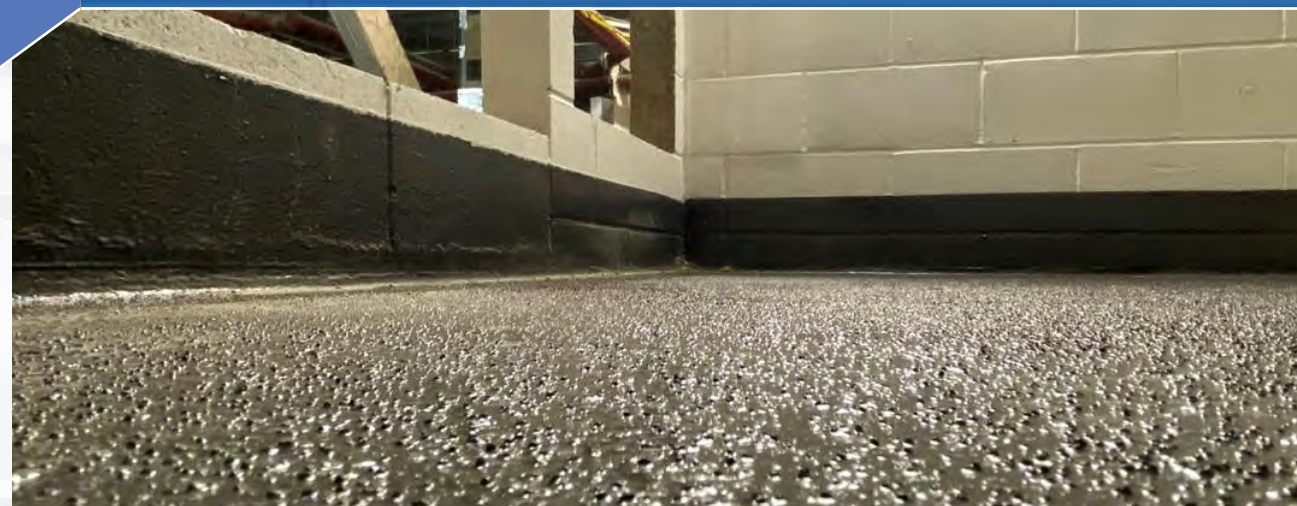


#### HydroCoat 313-WP - Fast-Set Leak Sealing Compound

- » Instantly stops running water/seepage through masonry or concrete
- » Becomes harder under water pressure
- » Non-shrink and sets in just 2 minutes to seal structural leaks

Code	Size	Colour	Yield per kg
313-WP	25kg	Grey Brown	0.46L

## COATINGS NEWCOAT SYSTEM



### HARD WEARING COATINGS

Fast-curing, liquid-applied protective and decorative coatings for internal flooring applications.



#### Epoxy Primer - Damp Tolerable for Porous Surfaces

- » Pre-priming damp/porous concrete & screed, such as decks and car parks
- » Can be applied just 7 days after concrete placement

Code	Size	Colour	Application Rate
901-P	5.2kg	Clear	1st coat 0.25kg/m <sup>2</sup> 2nd coat 0.17kg/m <sup>2</sup>



#### Epoxy DPM - Damp Tolerable Membrane

- » Provides a DPM/vapour barrier to damp, non-porous concrete & screeds
- » Can be applied to damp concrete or screed just 7 days after placement

Code	Size	Colour	Application Rate
810-5	5.2kg	Black	1st coat 0.35kg/m <sup>2</sup> 2nd coat 0.20kg/m <sup>2</sup>



#### Epoxy Top Coat - High Build Epoxy Floor Coating

- » Waterproof and tough floor coating or internal coating for concrete/steel tanks
- » Easily applied to concrete, steel, etc
- » Solvent-free and provides a chemical and abrasion-resistant finish

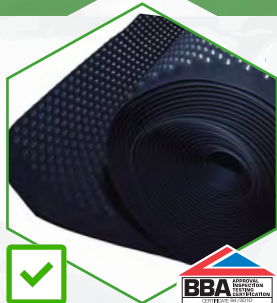
Code	Size	Colour	Application
701-HB	5kg	Grey	0.5 - 0.6kg/m <sup>2</sup>



## RECYCLED PRODUCTS & EPD CERTIFICATES

### RECYCLED PRODUCT RANGE

Made from 100% recycled plastic with no negative effect on their durability, longevity or performance.



#### CDM 508 Eco Floor - Recycled 8mm Drainage Membrane

- » The only 100% recycled 8mm cavity drain membrane with BBA certification
- » More studs per m<sup>2</sup> results in a higher compressive resistance with less loading to the substrate

Code	Size	Colour	Area
M2	2.5 x 20m	Black	50m <sup>2</sup>



#### CDM 520 Eco Floor - Recycled 20mm Floor Membrane

- » 20mm depth with high drainage when severe water penetration is expected
- » 100% recycled and BBA certified
- » High, long-term compressive strength

Code	Size	Colour	Area
M4	2.07 x 20m	Black	40m <sup>2</sup>
M13	2.07 x 10m	Black	20m <sup>2</sup>



#### Titan - Compact & Recycled Sump for Titan Pump Systems

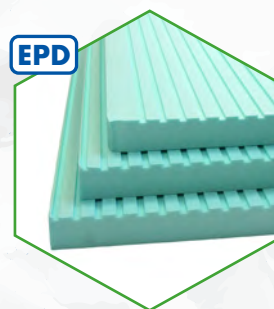
- » Compact sump chamber for collecting surface and ground water
- » Allows installation in tight locations
- » Made from 100% recycled HDPE

Code	Description	Drilled Holes?
T2C	Chamber only	No
T2C&L	Chamber, Lid & Frame	Yes

## ENVIRONMENTAL PRODUCT DECLARATIONS - EPDs

### WHY ARE ENVIRONMENTAL PRODUCT DECLARATIONS IMPORTANT?

Publishing a products lifecycle data as an EPD raises awareness of the environmental impact of construction products. This allows similar products to be compared accurately, and gives architects and specifiers the ability to make informed environmental decisions when selecting building materials.



#### CDM Fibrax XPS 500-C - Closed Cell Insulation

- » 50mm rigid extruded polystyrene (XPS) insulation board
- » Forms a 50mm spacer adjacent to CDM BaseDrain and FloorDrain
- » 500 kPa compressive strength

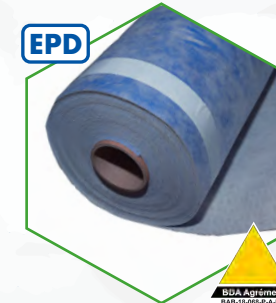
Code	Size	Area
500C	50 x 1000 x 600mm	4.8m <sup>2</sup> (8 boards)



#### HydroBond Lite - Pre-Applied & Fully Bonded Membrane

- » External waterproofing of basements, foundations, tanks and culverts
- » Exceptional flexibility results in a very high crack-bridging capability
- » Full mechanical bond to concrete

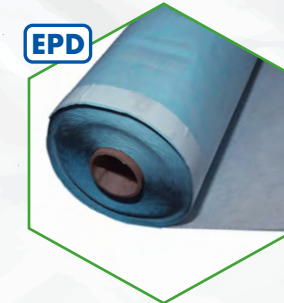
Code	Size	Colour	Area
HB-L	1m x 20m	White/Blue	20m <sup>2</sup>



#### HydroBond 403 - Pre-Applied & Self-Healing Membrane

- » Continuous external waterproofing to below-ground concrete structures
- » Self-healing when punctured
- » BDA certified & accepted by the NHBC
- » Full mechanical bond to concrete

Code	Size	Colour	Area
HB-2	1m x 20m	White/Blue	20m <sup>2</sup>



#### HydroBond 403 GB - Pre-Applied Water/Gas Membrane

- » Continuous external waterproofing to below-ground concrete structures
- » Resistant to radon, carbon dioxide and hydrocarbons in the ground
- » Self-healing when punctured

Code	Size	Colour	Area
HBGB	1.5m x 20m	White/Blue	30m <sup>2</sup>



#### NEWTON SPECIALIST BASEMENT CONTRACTORS

We work in partnership with our nationwide network of specialist contractors to provide the highest service in all aspects of domestic and commercial waterproofing.

##### High Quality Contractors

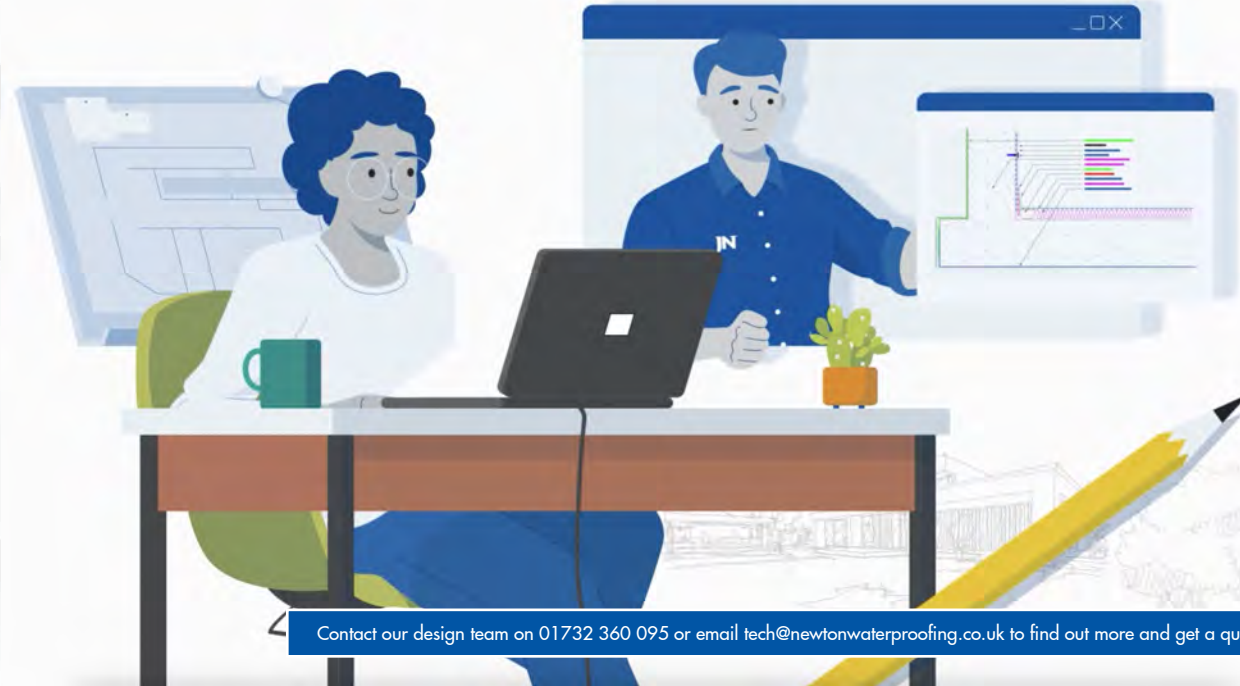
All contractors adhere to strict criteria, and once approved they must continue to regularly demonstrate quality workmanship in order to maintain their membership status.

The result is a high-quality and reliable network of contractors, and we always recommend that an NSBC is involved in any project with a new-build or existing waterproofing requirement.

##### Insurance-Backed Installation Guarantees

Newton Specialist Contractors can take full liability under their own professional indemnity (PI) insurance for the design of your waterproofing solution, and will support their installations with meaningful, insurance-backed guarantees.

This reduces your own liability, as well as meeting the key requirement of British Standard 8102:2022 to employ a qualified waterproofing specialist to design the waterproofing as part of your project team.



Contact our design team on 01732 360 095 or email [tech@newtonwaterproofing.co.uk](mailto:tech@newtonwaterproofing.co.uk) to find out more and get a quote



#### THE WATERPROOFING DESIGN PARTNERSHIP

##### Excellence in waterproofing.

Bringing together the client, the specifier, the supplier, and the contractor, the design partnership delivers a 'golden thread' of waterproofing expertise, supported by professional indemnity insurance.

Collaborating with the specifier, Newton and our approved contractors can take full liability at any design stage, acting as the designated waterproofing designer in compliance with the British Standard, and delivering the specialist expertise required by the Building Safety Act.

On design completion, our approved contractor takes the liability for the waterproofing under their own PI, securing the quality of the design and providing a guaranteed installation.

Enjoy the peace of mind in knowing your project is in capable hands. Get in touch for more information.





.....

.....

.....

.....

.....

.....

.....

.....

.....

.....

.....

.....

.....

.....

.....

.....

.....

.....

.....

.....

.....

.....

.....

.....

.....

.....

.....

.....

.....

.....

.....

.....

.....

.....

.....

.....

.....

.....

.....



# JN<sup>®</sup>

## NEWTON

### WATERPROOFING

#### HEAD OFFICE

Newton House, 17-19 Sovereign Way  
Tonbridge, Kent, TN9 1RH

T: +44 (0)1732 360 095

E: [info@newtonwaterproofing.co.uk](mailto:info@newtonwaterproofing.co.uk)

## Protecting Buildings Since 1848

#### LEEDS OFFICE

Unit 6b, Gibraltar Island Road, Old Mill  
Business Park, Hunslet, Leeds, LS10 1RJ

T: +44 (0)113 521 6777

E: [north@newtonwaterproofing.co.uk](mailto:north@newtonwaterproofing.co.uk)



#### Australia

Bayset Pty Ltd, Unit 1, 76 Postle St  
Coopers Plains, Queensland, Australia 4108

T: +61 (07) 3722 3822

E: [info@bayset.com.au](mailto:info@bayset.com.au)

W: [www.bayset.com.au](http://www.bayset.com.au)

#### New Zealand

Newton Systems Ltd,  
Newmarket, Auckland

T: +64 (0) 21 241 0452

E: [info@newtonsystems.co.nz](mailto:info@newtonsystems.co.nz)

W: [www.newtonsystems.co.nz](http://www.newtonsystems.co.nz)