

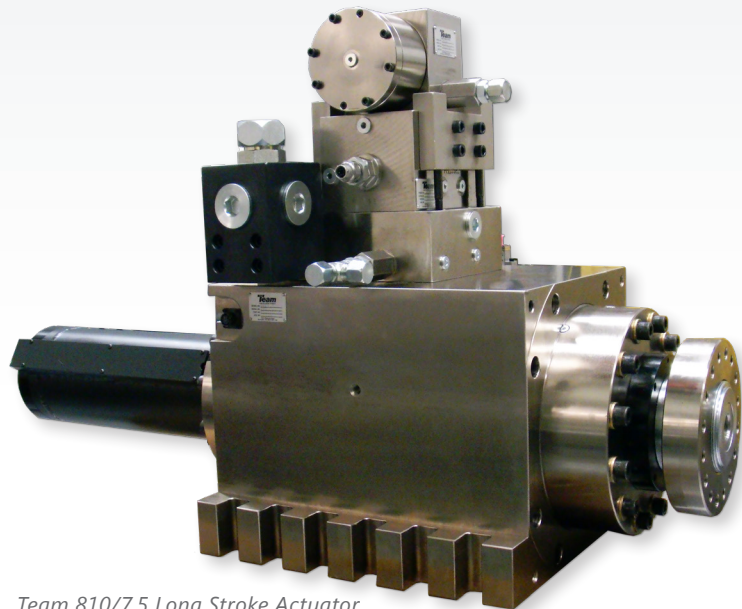
# Linear Actuators

## 50, 60 & 80 Series

Team Corporation manufactures a variety of actuator types and sizes for varying applications. Our most popular actuators are the 50, 60 and 80 Series linear actuators with rectangular bodies.

Team servo hydraulic linear actuators are sold as individual components for integration with commercially available servovalves, or supplied (as shown) with Team voice coil pilot valve and Team hi-performance servovalve.

Team's 50, 60 & 80 Series servo hydraulic linear actuators have distinguished themselves in hundreds of varying applications under demanding operational conditions. All Team servo hydraulic linear actuators are fatigue rated, require almost no maintenance and have demonstrated reliability and exceptional performance under the most demanding test environments.



*Team 810/7.5 Long Stroke Actuator*

### Features:

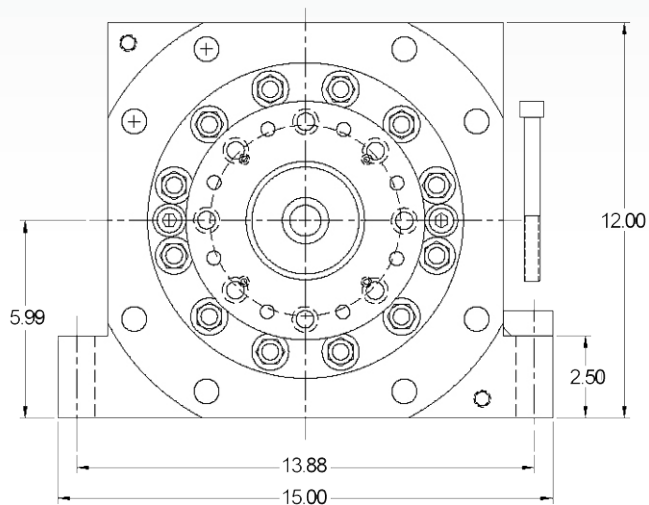
- One-piece, chrome plated piston rod for high strength and durability
- Hydrostatic rod support bearings for accurate, frictionless motion and high moment capacity
- Low pressure, low maintenance rod seals reduce maintenance and downtime
- Integral dashpots prevent damage to the actuator due to sudden stops
- Built-in LVDT displacement transducer
- Rectangular body mountable in either horizontal or vertical orientation for flexible applications.

### Applications:

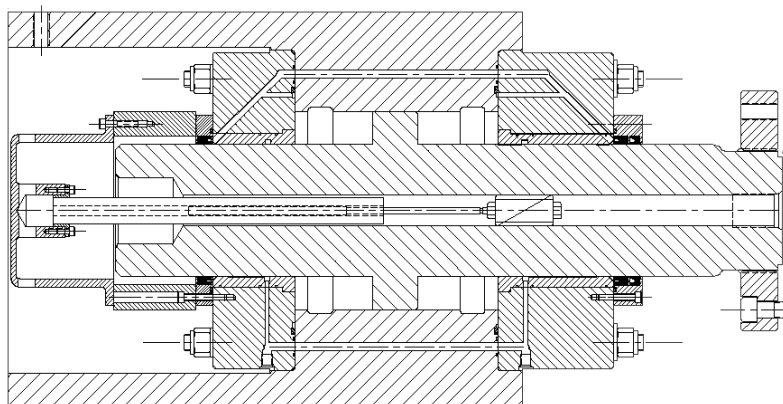
- Vertical and horizontal vibration test systems
- Multi-axis vibration test systems
- Fatigue Test Systems

# Specifications

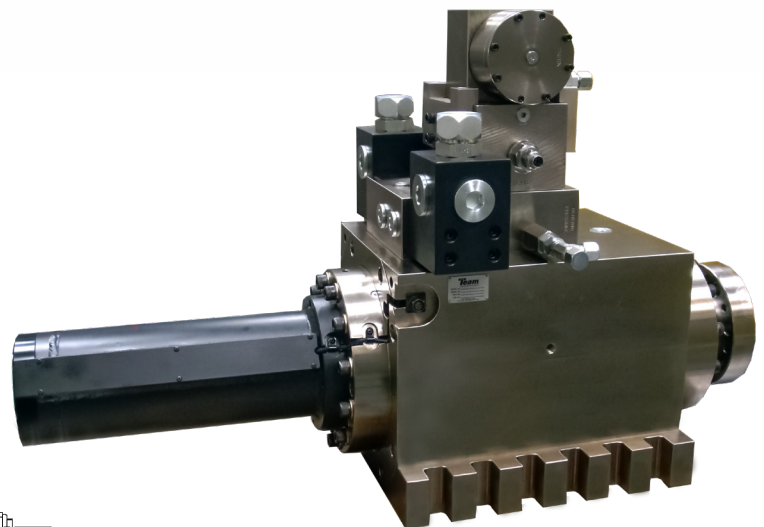
	52.5 Series	54.5 Series	62.5 Series	64.5 Series	80 Series
<b>Dynamic Stroke</b>	2.5 in (63.5 mm)	4.5 in (114 mm)	2.5 in (63.5 mm)	4.5 in (114 mm)	10.5 in (266.7 mm)
<b>Piston Weight</b>	22 lbs (11 kg)	24 lbs (11 kg)	56 lbs (25 kg)	80 lbs (36 kg)	150 lbs (68 kg)
<b>Dynamic Force Range</b>	2,000 - 6,000 lbf (8.9-26.7 kN)	2,000 - 6,000 lbf (8.9-26.7 kN)	6,000 - 50,000 lbf (26.7-222 kN)	6,000 - 50,000 lbf (26.7-222 kN)	6,000 - 50,000 lbf (26.7-222 kN)
<b>Moment Capacity</b>	23,000 lbf-in (2.6 kN-m)	23,000 lbf-in (2.6 kN-m)	54,000 lbf-in (6.1 kN-m)	54,000 lbf-in (6.1 kN-m)	54,000 lbf-in (6.1 kN-m)



End View - Typical 64 Series Actuator



Cross Section View - Typical 64 Series Actuator



Team 810/7.5 Long Stroke Actuator





**Asia Pacific**  
Rm 2005 Minhang Plaza  
18 Xinjinqiao Road, Pudong  
201206 Shanghai, China  
+86.21.3382.0671  
+1.831.655.6677

