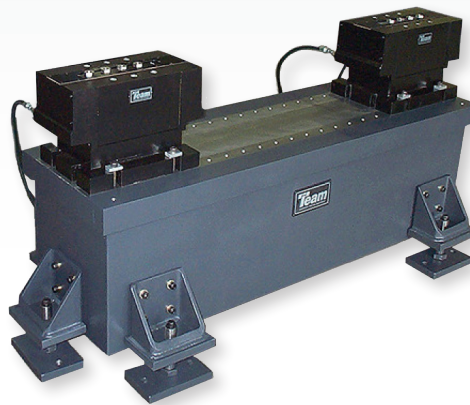


V-8, T-8 & 914

Hydrostatic Bearings

The V-8 and T-8 Hydrostatic Bearings are Team's most popular stand-alone bearing. Standard bearings can be used with electrodynamic and servo-hydraulic shakers having as much as 2 in. (50 mm) of stroke. Each bearing can carry as much as 10,000 lbs (4535 kg) of vertical load, so most test packages can be accommodated with 4 or 6 bearings. The V-8 and T-8 are easy to use and require little maintenance. The base of each bearing features an "air pad" to facilitate movement and alignment of the bearings. A filter on the inlet line assures that only clean oil reaches the bearing. Long stroke bearings available in 7 in. to 12 in. displacement.



Features:

- Stiffest bearing system available.
- Easily stored when not in use.
- Air pad for ease of movement and alignment
- Low-maintenance
- 2.5 inch (62.5 mm) to 12.0 inch (304.8 mm) stroke
- 10,000 lb (4535 kg) vertical load

Applications:

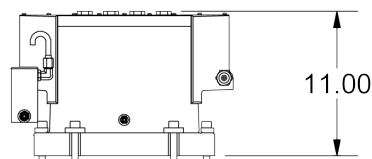
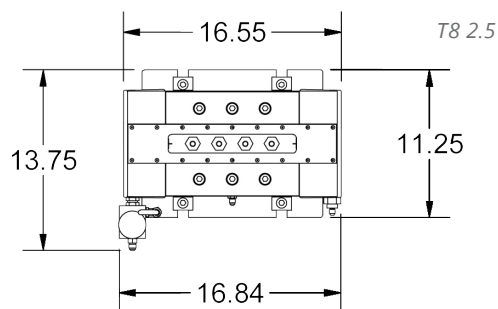
- Guidance of heavy or bulky test specimens
- Use as outriggers with existing slip tables
- Attach long or wide test articles directly to the bearing
- Use for custom slip table designs

Standard Bearing

	T8 - 2.5	T8 - 4	V8 - 2.5	V8 - 4
Total Travel inches (mm)	2.5 (62.5)	4 (101.6)	2.5 (62.5)	4 (101.6)
Side Motion inches (mm)	0.050 (1.3)	0.050 (1.3)	0 (0)	0 (0)
Moving Weight lbs (kg)	11 (5.0)	21 (9.5)	12 (5.4)	23 (10.4)
Viscous Drag lb-sec./inch (N-sec./m)	~1.5 (262.7)	~2.3 (402.5)	~2.0 (350.2)	~3.0 (525.0)
Vertical Stiffness lb-in (N/m)	8 x 10 ⁶ (1.4 x 10 ⁹)		8 x 10 ⁶ (1.4 x 10 ⁹)	
Flow Required	0.10 gpm @ 3,000 psi (0.4 liter/min @ 210 bar)			
Rated Loads				
Vertical lbs (kg)	10,000 (4535)	10,000 (4535)	10,000 (4535)	10,000 (4535)
Pitch Moment lb-ft (kN-m)	1,750 (2.4)	1,750 (2.4)	1,750 (2.4)	1,750 (2.4)
Roll Moment lb-ft (kN-m)	1,660 (2.2)	1,660 (2.2)	880 (1.2)	880 (1.2)
Shipping Weight lbs (kg)	275 (125)	391 (177)	300 (136)	400 (181)



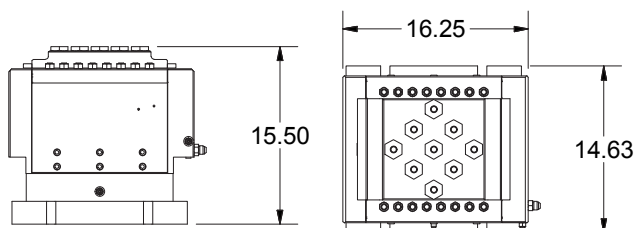
V8/T8 Bearing



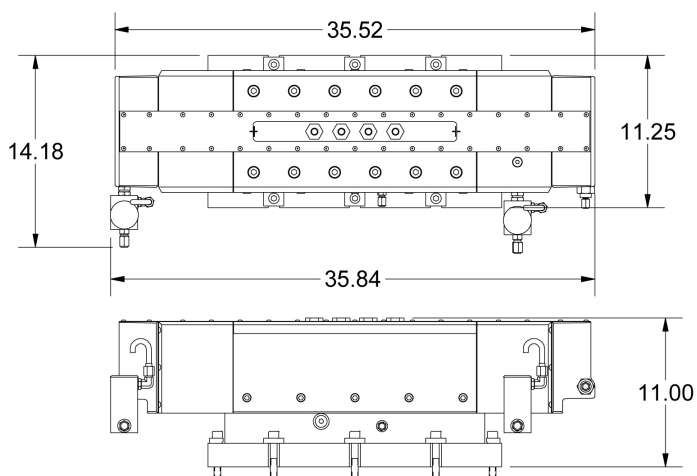
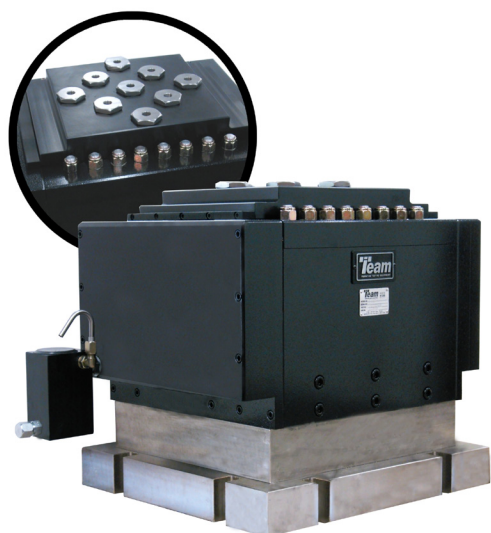
	T-8 - 7.0	T-8 - 12.0	V8 - 7.0	V8 - 12.0	914T - 2.5	914V - 2.5
Total Travel inches (mm)	7.0 (178)	12.0 (305)	7.0 (178)	12.0 (305)	2.5 (63.5)	2.5 (63.5)
Side Motion inches (mm)	0.050 (1.3)	0.050 (1.3)	0 (0)	0 (0)	0.05 (1.3)	0 (0)
Moving Weight lbs (kg)	26 (11.8)	33 (15)	29 (13.2)	38 (17)	54 (24.5)	65 (29.5)
Viscous Drag lb-sec/in. (N-sec/m)	~2.7 (472.5)	~2.7 (472.5)	~3.6 (630)	~3.6 (630)	~6 (1050)	~9 (1575)
Vertical Stiffness lb-in (N/m)	8xE06 (1.4xE09)	8xE06 (1.4xE09)	8xE06 (1.4xE09)	8xE06 (1.4xE09)	30xE06 (5.2xE09)	40xE06 (7xE09)
Flow Required 3000 psi (205 bar)	0.1 gpm (0.4 lpm)	0.1 gpm (0.4 lpm)	0.1 gpm (0.4 lpm)	0.1 gpm (0.4 lpm)	0.1 gpm (0.4 lpm)	0.1 gpm (0.4 lpm)

Rated Loads

Vertical, lb (kg)	20,000 (9,071)	20,000 (9,071)	20,000 (9,071)	20,000 (9,071)	42,000 (19,050)	42,000 (19,050)
Pitch Moment lb-ft (kN-m)	2,500 (3.4)	2,500 (3.4)	2,500 (3.4)	2,500 (3.4)	7,200 (9.8)	10,500 (14.2)
Roll Moment lb-ft (kN-m)	3,000 (4.0)	3,000 (4.0)	1,500 (2.0)	1,500 (2.0)	10,000 (13.5)	9,000 (12.0)
Shipping Weight lbs (kg)	440 (200)	~500 (227)	500 (227)	545 (247)	545 (247)	675 (360)



Model 914 Bearing*



7 in. Long Stroke Bearing*

*Measurement in inches





Team Offices

- Authorized Sales Agents

sales@teamcorporation.com

Corporate Headquarters

11591 Watertank Road,
Burlington, WA 98233, USA
+1.360.757.8601
teamcorporation.com

Asia Pacific

Rm 2005 Minhang Plaza
18 Xinqiao Road, Pudong
201206 Shanghai, China
+86.21.3382.0671
+1.831.655.6677

Engineered vibration testing solutions for improved product quality

