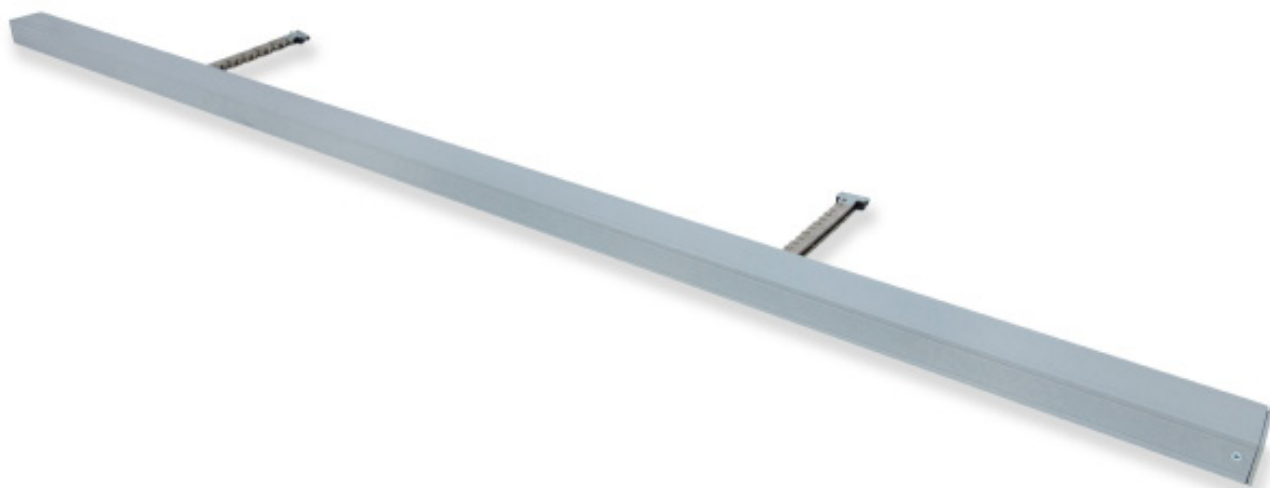


Twin SECO N 24 25

Chain Actuator / 24 V dc / 2 x 250 N



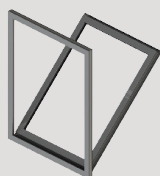
Chain Actuator / 24 V dc / 2 x 250 N

The Twin SECO N 24 25 is a compliant Chain Actuator designed to provide precise and reliable operation for Environmental Ventilation applications.

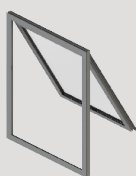
SE Controls manufacture this high-quality 'Made in Britain' actuator with the following features:

- Offers improved window performance and aesthetics for automated solutions
- 'Frequency of operation' data logging records every actuator movement
- Compact design with variable options for stroke length
- Standard finish is RAL 9006 (White Aluminum) but it can be customised to suit installation requirements
- Standard flex length is 2 m but this can be modified to suit installation requirements
- Standard range of pre selected quarter point bodies plus tailored lengths upon request.
- Extensive range of brackets to suit a variety of window systems
- Quiet operation with configurable speed control

Orientation



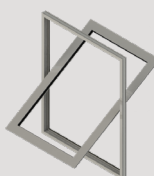
Bottom Hung



Top Hung



Side Hung



Centre Pivot



Applications



Environmental Ventilation

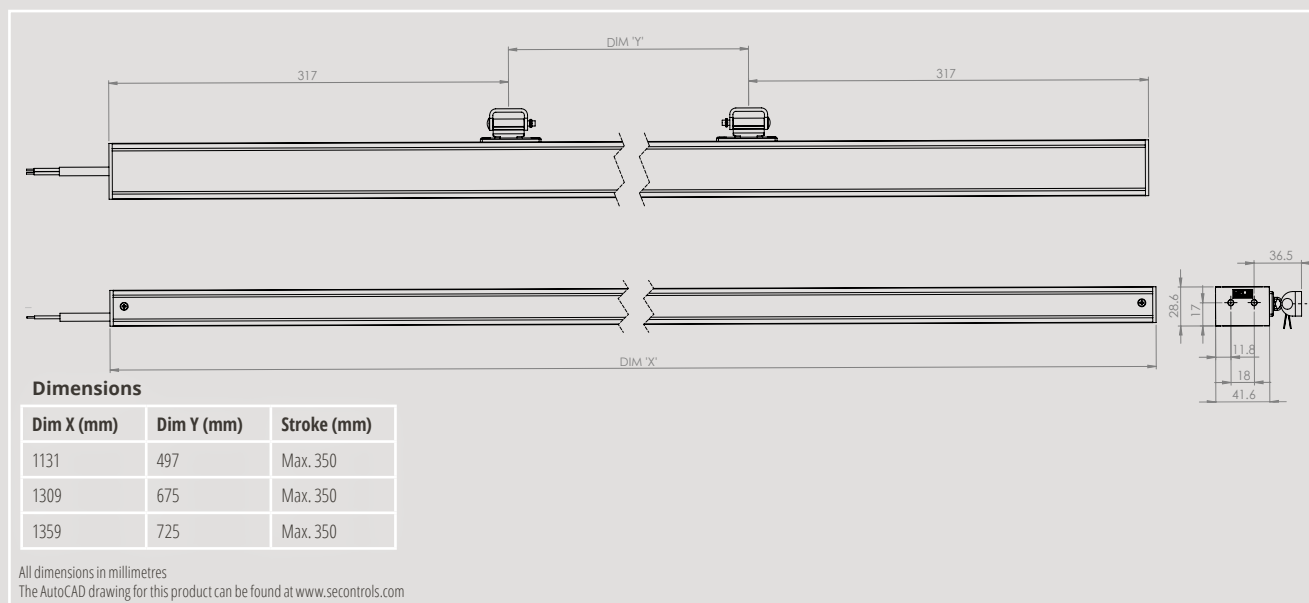
Controllers

Controller	No. Actuators ¹
3 AMP Transformer	3
NVLogIQ PSU	4
SHEVTEC Controller	8
30 AMP PSU	30

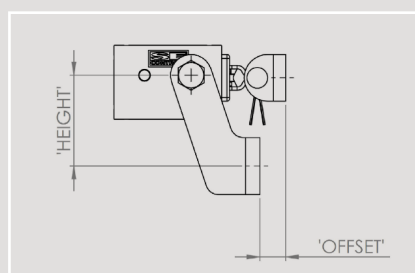
¹Recommended maximum number of actuators. The maximum number of actuators is based on optimum operating conditions, please contact SE Controls for more information.

NB: 24 V actuators require control from a compatible low voltage unit such as an OS2 SHEVTEC controller or NVLogIQ® PSU and permanent power should not be applied.

Technical Drawing



Standard Bracket Detail



Bracket Product Codes

	Height (mm)		
Offset (mm)	35	40	50
0	AKS18000001	AKS18000002	AKS18000003
5	AKS18050001	AKS18050002	AKS18050003
8	AKS18080001	AKS18080002	AKS18080003
10	AKS18100001	AKS18100002	AKS18100003
15	AKS18150001	AKS18150002	AKS18150003
20	N/A	N/A	AKS18200003



Please ensure the controllers have a minimum 1 second delay between switching if you are not using SE Controls products.

Technical Data

Actuator	Twin SECO N 24 25
Actuator Type	Chain Actuator
Voltage (all $\pm 5\%$)	24V dc
Amp Draw Current (with load)	>1.0 A
Stroke	20 mm - 350 mm (Configurable)
Operating Speed	min. 5 mm/sec (configurable)
Ambient Operating Temp	-5°C to +60°C
IP Rating	IP20
Thrust Force	2 x 250 N
Close Force	2 x 250 N
Clamping Force	2 x 4000 N
Soft Close	Yes
Switching	Electronic
Seal Relief	Programmable up to 20 mm
Synchronisation	Optional
Standard Finish	RAL 9006 (White Aluminium)
Colour Option	Other RAL colours available on request
Flex Length	2 m
Flex Type	2 core PVC 4 core (voltage free contact) as option
Flex Colour	Grey
Duty Cycle	22% (approx. 2 mins on, 7 mins off)
Product Warranty	10,000 cycles or 12 months from the date of invoice ¹
Bracket	Sill fixing/ face fix
Application	Environmental Ventilation

¹ Commercial terms for each project will supersede this warranty information.

Product Codes

White Aluminium (RAL 9006)	Operating Voltage	Force	Stroke	Actuator Body Length	To Suit Vent Length
AAST250350S	24V	250 N	350 mm	1131 mm	1150 mm
AAST251350S	24V	250 N	350 mm	1309 mm	1350 mm