



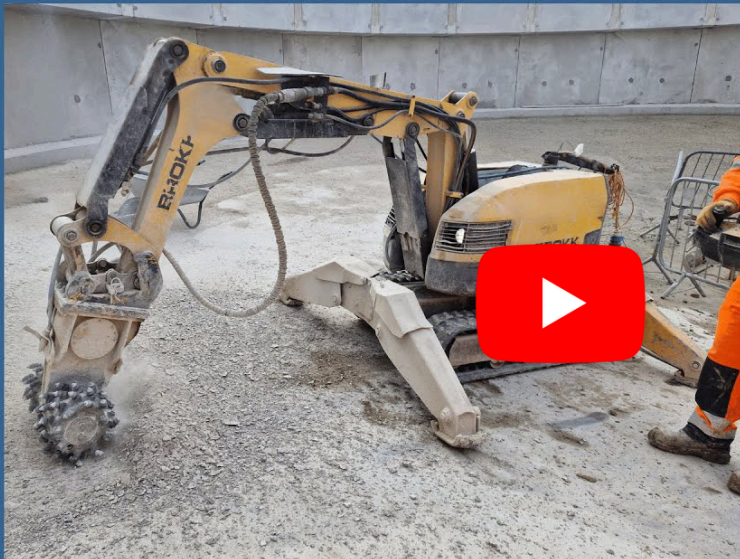
Measured By Performance



MARCH 2025

**MAIN STREAM CONSTRUCTION
SERVICES**

**INFRASTRUCTURE/AVIATION
SERVICES**



**CONCRETE
REDUCTION
USING
SCABBLING
ATTACHMENT**



We were tasked by our customer to remove an average of 50mm of concrete from the surface of a circular sloped water tank.

The scope of the works were to expose the reinforcement mesh beneath the concrete so that a new finish could be overlaid and be incorporated into the existing reinforcement. **Read more....**

**Robotic Demolition
Services**

RECENT SOCIAL MEDIA POSTS

Just in case you missed them, these are our latest social media posts. To read the full details click on the image.

FLOOR SAWING AT GATWICK



Est. 1991
CASTLE & PRYOR
Measured By Performance



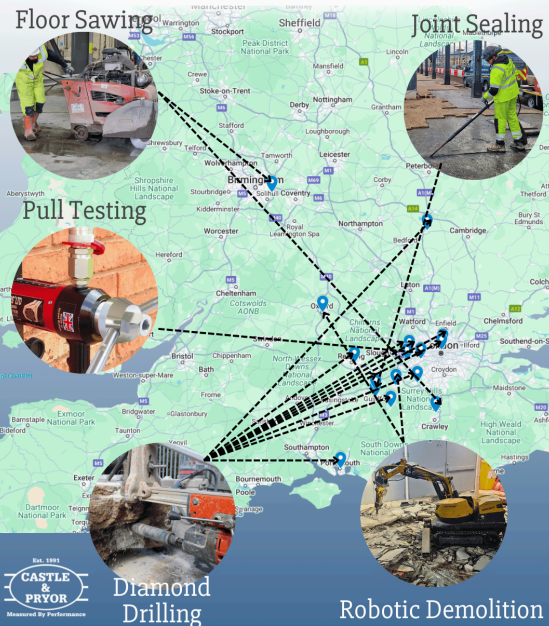
FLOOR SAWING IN HAMPSHIRE

Est. 1991
CASTLE & PRYOR
Measured By Performance



0800 163 382
info@castle-pryor.co.uk

WHERE WE ARE WORKING THIS WEEK



0800 163 382

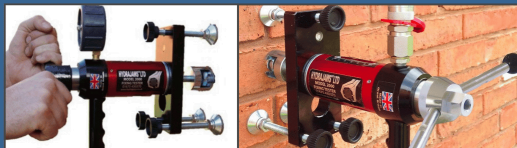
info@castle-pryor.co.uk

CFA APPROVED PROFESSIONALS FOR 8 YEARS - 2017-2025

Est. 1991
CASTLE & PRYOR
Measured By Performance



Operating Nationwide



Where are we working?

St Peter's Hospital in Chertsey

What are we doing?

Trench Forming

What plant are we using?

Golz 3 phase floor saw and Brokk 70 demolition robot





WE ARE HIRING

TRAINEE DRILLING & SAWING OPERATIVES

*Starting £15 ph

Essential Requirements

- ✓ Have a full clean UK driving license
- ✓ Flexible for day, night & weekend shifts
- ✓ Hard working, reliable, dependable & fit
- ✓ Be 21 years or older

Benefits

- ✓ Competitive pay
- ✓ 28 days holiday
- ✓ Company vehicle & fuel card
- ✓ Private health cover

*Depending on experience (based on 8.5hr day)

Please submit your CV to info@castle-pryor.co.uk



CUTTING & BREAKING OUT 17 FLOOR BOXES AT LOCAL CAR SHOWROOM

1

2

3

4

0800 163 382

info@castle-pryor.co.uk



Restoring an icon

Joint sealing on the Tyne Bridge

Friday 14th March

LATEST NEWS

CASTLE & PRYOR IN ACTION

[Read Full News Article](#)

FIND OUT MORE ABOUT US..



View Our Brochure
**MAINSTREAM
CONSTRUCTION
SERVICES**



View Here

View Here



- History
- Mission
- Vision
- Values

LEARN MORE »

**STAY UPDATED AND JOIN OUR
LINKEDIN COMMUNITY.**

JOIN NOW



GET A QUOTE



Measured By Performance

**Not already a subscriber?
JOIN OUR NEWSLETTER**

Unlock a World of Knowledge and Stay
Updated with Our Exclusive Content.



If you no longer wish to receive this newsletter,
[click here to unsubscribe.](#)

Castle and Pryor Ltd
Elles Hse, 4b Invincible Rd,
Farnborough, GU14 7QU

0800 163 382
info@castle-pryor.co.uk

CONFIDENTIALITY NOTICE: The contents of this e-mail and any attachments are confidential to the intended recipient. If you are not the intended recipient, please notify the sender and delete it. Be aware that emails are not secure and may contain viruses. Unless expressly stated, the content of the e-mail should not be understood to create any contractual commitments



Your Company © 2020 | [Contact](#) | [Legal Notice](#) | [Privacy Policy](#)