



Version 11 is Here

What is New - Upgrade Guide

PLANTRUN

WHAT IS PLANTRUN?

AUTOMATIC LIVE DATA COLLECTION

Direct from the machines

REMOVING PAPERWORK

Shopfloor, Meetings,
Management, Admin

KPI TRACKING & REPORTING

OEE, Quality, Downtime, Reasons
for Stoppages, etc.

AUTOMATING DATA FLOWS

Connect your factory with the rest
of the business with powerful
integration capabilities

REAL TIME VISUALISATION

Empower your staff with
performance metrics available
site-wide (or across multiple sites)

AND SO MUCH MORE...

What is New in Version 11

IMPROVED VISUALISATION

VISUALISATION

IMPROVED DECISION-MAKING

Clearer visuals bring the data to life - Version 11 improves response times, allows for quicker assessments, leading to more informed decisions.

INCREASED EFFICIENCY

Quick access to data reduces time spent on manual data gathering and analysis. PlantRun tells you where to look.

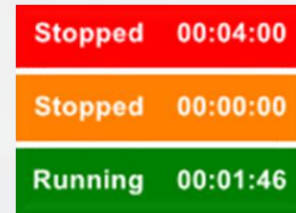
DAY-BY-DAY IMPROVEMENTS

Use day-by-day benchmarking to visualise improvements. Revamped dashboards with digestible data makes benchmarking easy.

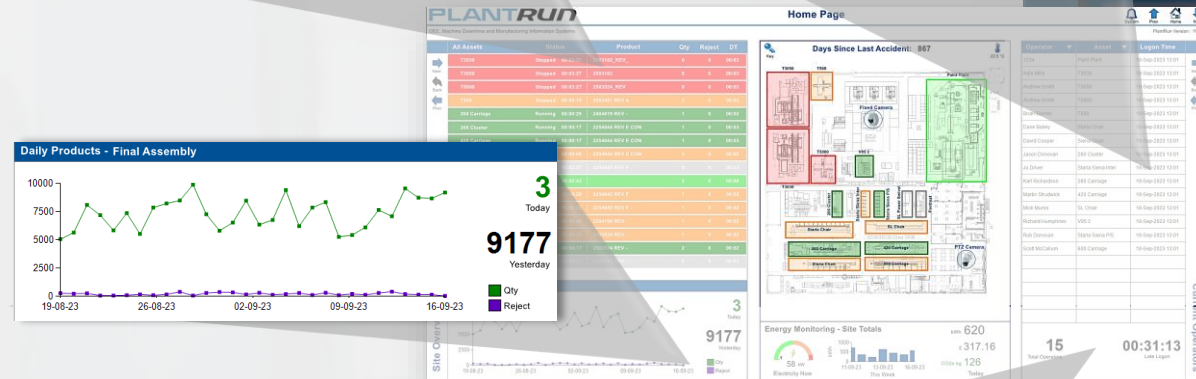
VISUALISATION

ENHANCED VISUALS AND HISTORIC INFORMATION

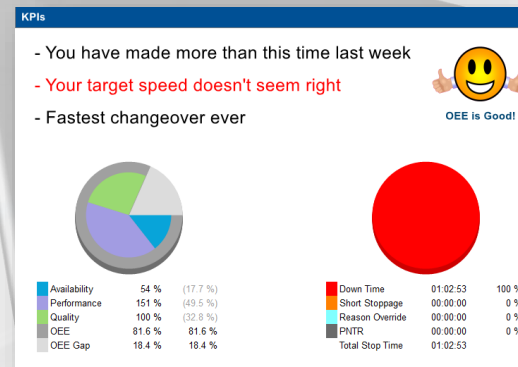
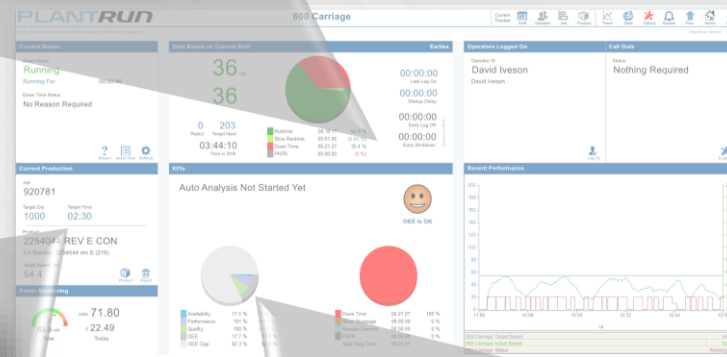
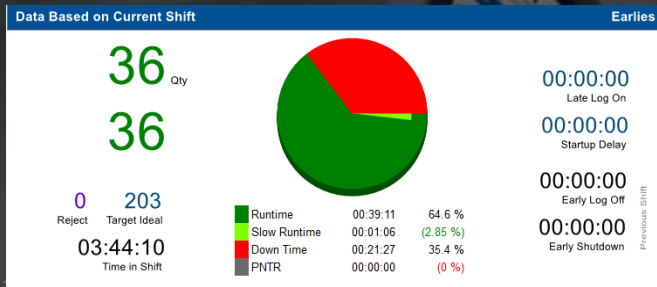
- Production history now available to highlight day-by-day improvements
- Clearer asset status with visual Andon board style to improve current awareness
- All logged on Operators seen in either name-ordered or asset-ordered format
- Overall manning levels and lost time due from late logons highlighted
- With most office based Remote Viewstations now with a full HD capability, PlantRun's standard dashboards are now widescreen



Operator	Asset	Logon Time	
1234	Paint Plant	18-Sep-2023 13:01	Next
Adle Mills	T3030	18-Sep-2023 13:01	Back
Andrew Smith	T3050	18-Sep-2023 13:01	Prev
Andrew Smith	T5000	18-Sep-2023 13:01	
Brian Barnes	T500	18-Sep-2023 13:01	
Dave Bailey	Starla Chair	18-Sep-2023 13:01	
David Cooper	Siena Chair	18-Sep-2023 13:01	
Jason Donovan	260 Cluster	18-Sep-2023 13:01	
Jo Driver	Starla Siena Inter	18-Sep-2023 13:01	
Karl Richardson	260 Carriage	18-Sep-2023 13:01	
Martin Strudwick	420 Carriage	18-Sep-2023 13:01	
Mick Munro	SL Chair	18-Sep-2023 13:01	
Richard Humphries	V85 2	18-Sep-2023 13:01	



VISUALISATION



IMPROVED PRODUCTION INSIGHTS FOR INDIVIDUAL ASSETS

- Individual Asset Display have improved graphics
- Late logon and early finishes highlighted alongside pie charts of key metrics
- New PlantRun Smart KPIs analyse past performance and compare it to current production runs to direct what to focus on
- Current job status highlighted more clearly to aid production understanding

What is New in Version 11

ANALYSIS TOOLS

ANALYSIS TOOLS

UNLOCK THE FULL POTENTIAL OF YOUR DATA

Discover hidden opportunities and streamline your operations with our advanced analysis tools.

PREDICT, ANALYSE, OPTIMISE

Anticipate challenges, analyse trends, and optimize processes with real-time analytics.

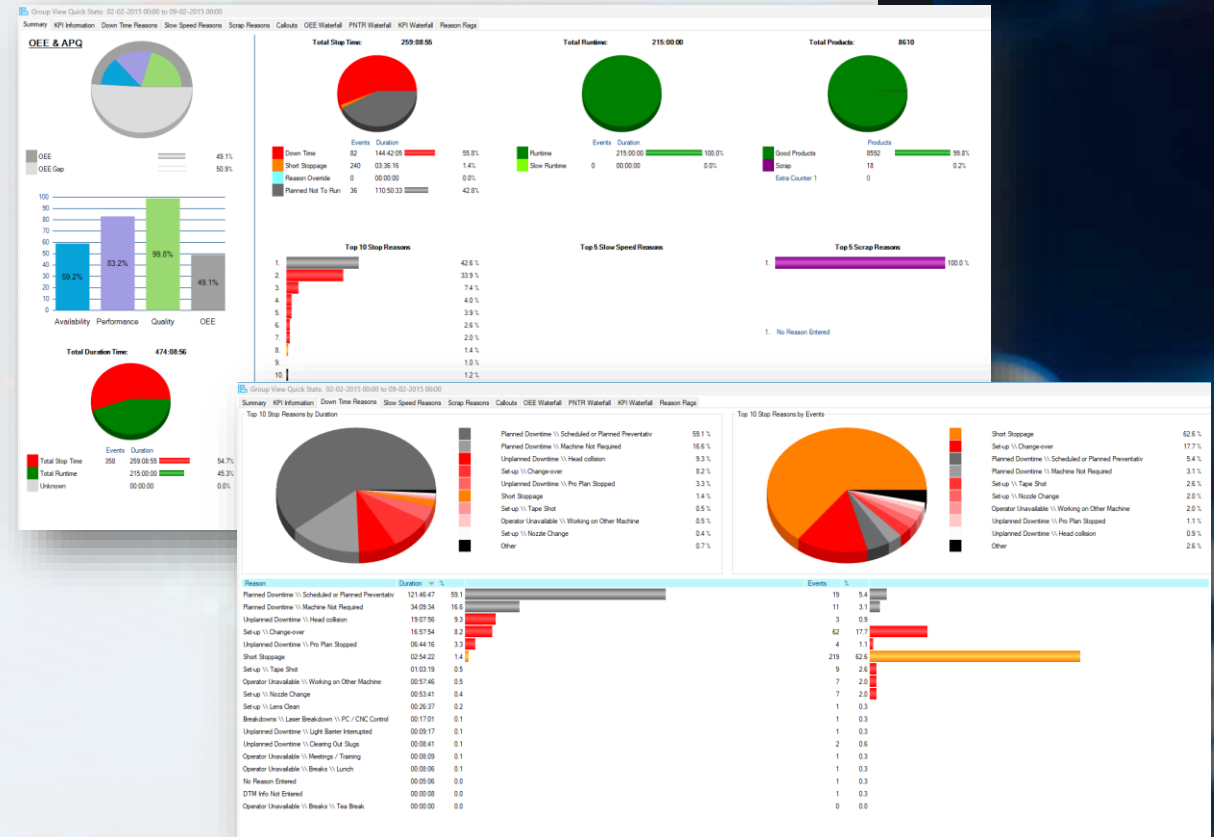
READY FOR YOUR MORNING MEETING

Quickly understand where your losses are with improved pie charts, waterfalls and bespoke “grouped” downtime reason bar charts. Automatically receive personalised reports ready for your meetings.

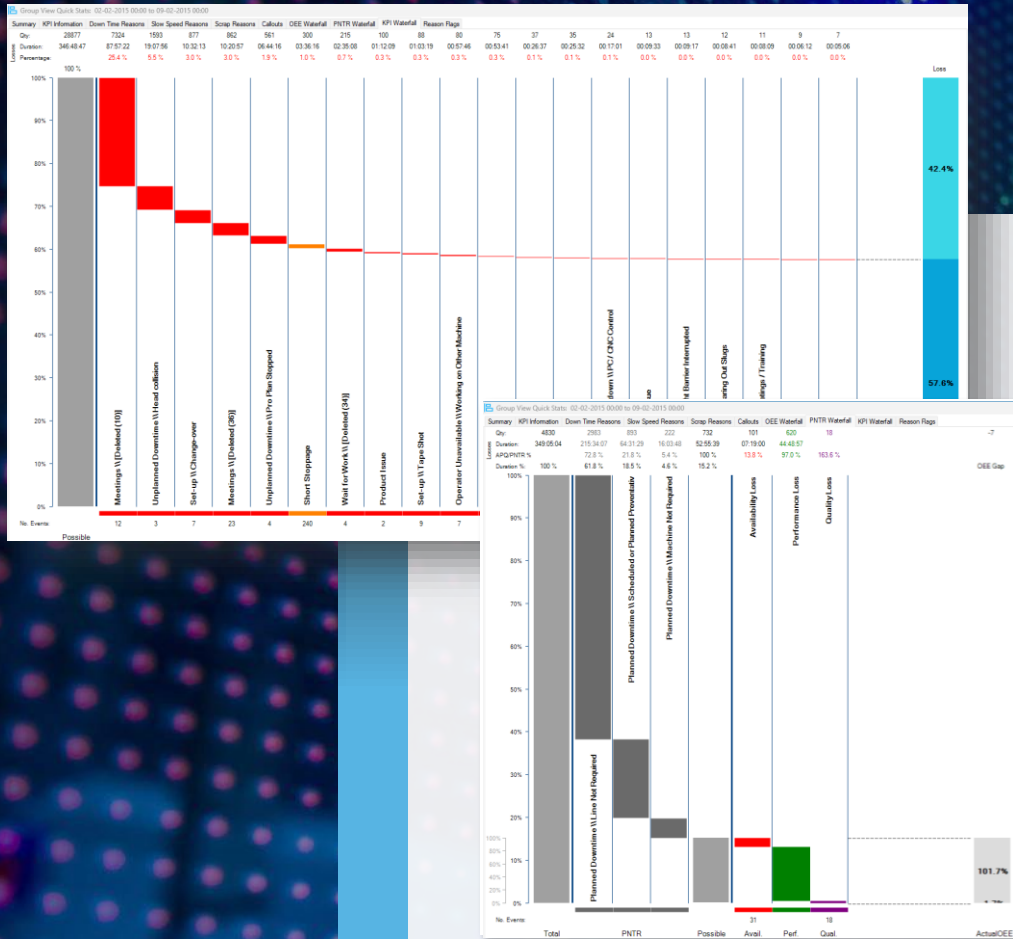
ANALYSIS TOOLS

STATS, STATS AND MORE STATS

- Improved visibility of KPIs with breakdown of significant elements
- On-screen or pdf reporting capable to get the information to where it is needed
- Any combination of assets or departments to group relevant data together
- Enhanced visibility of downtime by reason and by number of events to help target resources



ANALYSIS TOOLS



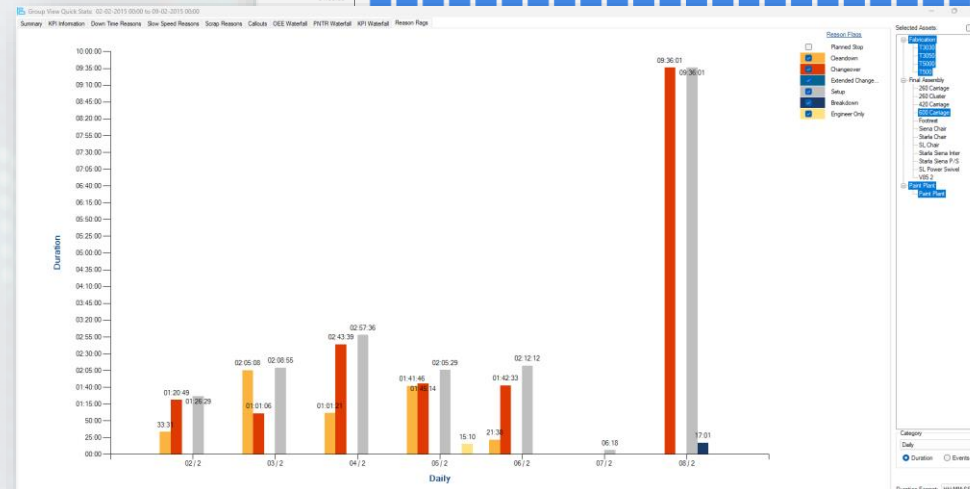
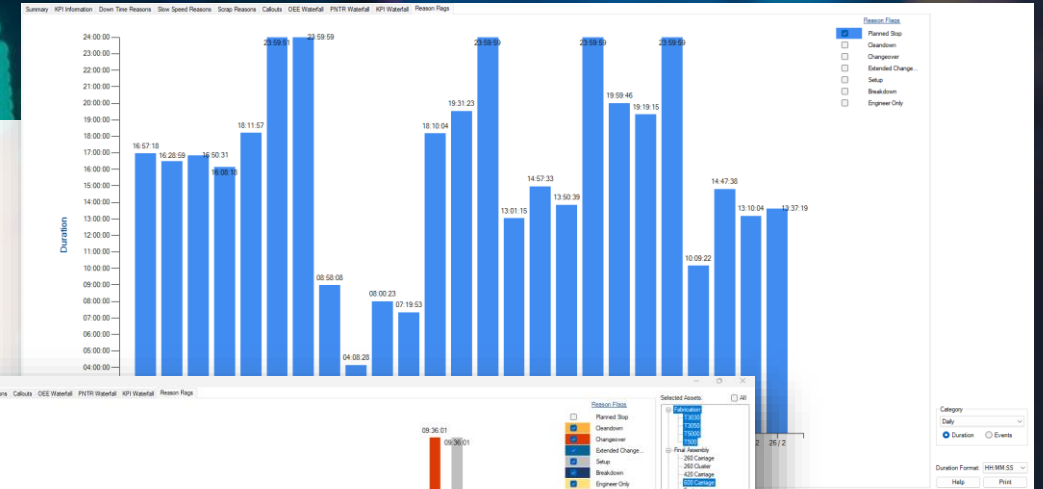
WATERFALLS

- New waterfall analysis tools to help visualise losses and target improvements
- Helps target OEE losses by highlighting top downtime reasons, performance and quality, by
 - ✓ Lost time
 - ✓ Potential lost number of products
- Breakdown of PNTR reasons
 - ✓ Highlights the hidden OEE elements
- Optionally shows breakdown of top Slow Speed Running reasons

ANALYSIS TOOLS

GROUPED REASONS

- Reasons can be marked to group them in categories
 - ✓ Changeover, Setup, Breakdown etc.
- Day-by-day totals highlight losses and improvements
- Any combination of assets or departments to group relevant data together, over any time range
- Can be applied to existing data sets to have immediate impact



What is New in Version 11

ENHANCED INTERFACES

INTERFACES

TRANSITION TO MODERN TOUCHSCREEN INTERFACES

- DTM04 Outstations are robust and reliable but...
- Touch screens provide better feedback to the shop floor and more capabilities
 - ✓ High contrast, high resolution
 - ✓ Any size from 10" tablets to large panel PCs
 - ✓ Supplied with VESA mounting arms/joints
 - ✓ Bluetooth device capable e.g. barcode scanners
- Optional startup checksheets and assembly instructions visible



What is New in Version 11

NOTIFICATION

NOTIFICATION

IMPROVED CALLOUT* VISIBILITY

- Callout indicator at the top of all dashboards
- Home page shows Callout type
 - ✓ Engineer, Supervisor, QA etc.
- Ordered list of Callouts, which can also be prioritised
- Individual asset displays also show callout status, waiting time etc.

* Optional feature

The screenshot displays the Plantrun dashboard with several callout-related components:

- Top Navigation Bar:** Includes icons for Sites, Callout, System, Prev, Home, and Next.
- Callout Requests Table:** A table with columns for Supervisor, Asset, and Wait Time. The first row shows a callout for SL Chair with a wait time of 527:41.
- Callout Requests - Engineer Table:** A table with columns for Status, Asset, and Wait Time. The first row shows a callout for Siena Chair with a wait time of 527:36.
- Callouts List:** A list of callouts with columns for Status, Asset, and Repair Time. The first row shows a callout for Siena Chair with a status of Running and a repair time of 00:00:49.
- Call Outs Modal:** A modal window showing the status of a callout. It displays "Engineer Arrived" and a repair time of 00:03:16.

NOTIFICATION

INFORMATION MESSAGING

- Welcome messages keep staff informed of day-to-day events
 - ✓ Appearing on shop floor screens and Home Page
- Health and Safety messages provide feedback and provoke thought
 - ✓ Number of days since last accident, on shop floor displays and Home Page
- Priority notifications on shop floor for
 - ✓ Site evacuation
 - ✓ Callouts

Welcome 16:34

The UK Operations Director is visiting today

Well done Tony Gudrith on 20 years working with the company

Employee of the month has been awarded to Sue Radcliffe for all her work on improving quality

Today's Message

The UK Operations Director is visiting today

PLANTRUN

PLANTRUN Today's Message The UK Operations Director is visiting today

Information Systems

Status	Product	Qty	Reject	DT
Stopped 00:09:54	2503018_E	0	0	15:05
Stopped 00:09:54	2503182	1	0	15:05
Stopped 00:09:54	2503524_REV	1	0	15:05
Stopped 00:09:27	2503481 REV A	11	0	00:03
Stopped 00:09:54	2404819_REV	1	0	00:09
Stopped 00:09:54	1254844 REV E COR	1	0	00:09
Running 00:00:49	2254045 REV F	5	0	00:05

Days Since Last Accident: 1137

Key

13000 1500 1600

17000

Ground Floor

Days Since Last Accident: 1137

Site Evacuation

16:42

Please proceed to the nearest highlighted route.





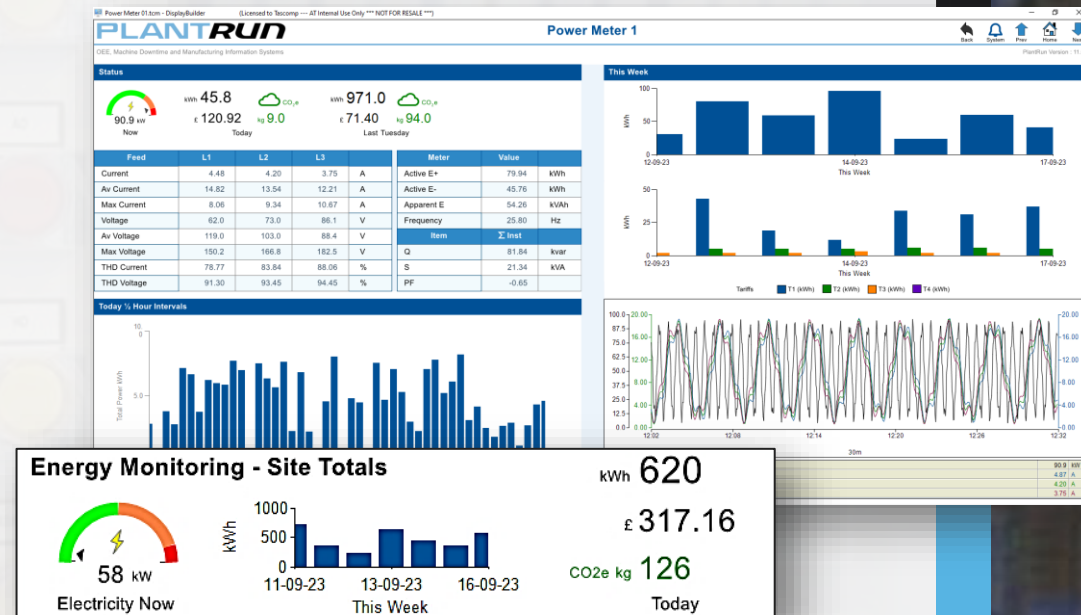
What is New in Version 11

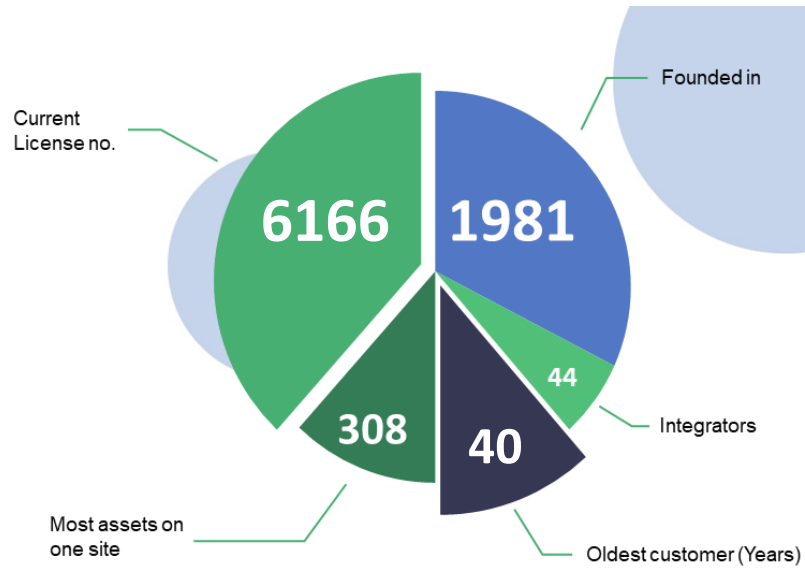
ADDITIONAL MONITORING

ADDITIONAL MONITORING

INTEGRATED ENERGY MONITORING MODULE

- New optional Energy Monitoring module
- Records utilities e.g. electricity
 - ✓ By half hour and day-by-day
- Site Totals available on Home Page
- Individual asset usage can be tied to production
 - ✓ By part
 - ✓ Breakdown by tariff
- Scheduling can be reviewed according to tariff costs and utility intensity





SUMMARY

Tascomp have been developing software and supplying control and monitoring systems since 1981.

We develop and supply PlantRun, an advanced Production Intelligence System, that targets improving the productivity of manufacturing lines and test processes.



Version 11 is Here

Contact us for more information

sales@tascomp.com

plantrun.co.uk

+44 1642 370666

PLANTRUN