



“Sealing your needs with  
Peace of mind since 1884”



# ACME

- **A Global Presence company**
- **Our Origins date back to 1884**
- **We are one of the world's leading manufacturers of quality security seals**
- **Continuing to design, develop and manufacture innovative quality security seals**





**Catering Trolleys**



**Shipping containers**

# Biodegradable Security Seals

Since 2020, **Acme Seals** has been at the forefront of sustainable manufacturing practices. They've taken a significant step by producing **all their Plastic Seals using biodegradable plastic**. Here are the key points:

1. **Biodegradable Plastic:** Acme Seals' plastic seals are made with a special biodegradable additive from **BioSphere**. This additive enhances the plastic's environmental friendliness. When these seals end up in the environment, they attract over **600 microbes** that assist in digesting the plastic. These microbes thrive in both **anaerobic (landfill)** and **aerobic (composting)** environments<sup>1</sup>.
2. **Strength and Integrity:** The transition to biodegradable plastic doesn't compromise the seals' strength or integrity. They perform just as effectively as traditional plastic seals until they reach the right environment for biodegradation.
3. **Recyclability:** Not only are these seals biodegradable, but they're also **100% recyclable**. This dual benefit ensures that Acme Seals' products contribute positively to our planet.
4. **Compliance:** Acme Seals' biodegradable plastic complies with various standards, including:
  - **ISO 14021:2016:** Environmental labels and declarations.
  - **ASTM D5511:** Anaerobic biodegradation under high solids environments.
  - **ASTM D5526-12:** Anaerobic biodegradation under accelerated landfill conditions.
  - **ASTM D5338:** Aerobic biodegradation.
  - **EPA Method 8015:** Demonstrating complete breakdown.
  - **EU Directive 94/62/EC:** Packaging and Packaging Waste compliance.
5. **A Better Solution:** Unlike most recycled plastics that still end up in landfills, Acme Seals' biodegradable plastic truly breaks down. It won't linger for hundreds of years like conventional plastics.



## Pull – Tight Seals

### Combilock Seal

The Acme Combilock Seal is a versatile pull-tight seal manufactured from polypropylene material.

Strap: 7mm

Sizes: 30cm, 35cm, 40cm

BIO



### X Seal

The Acme X Seal is a 2 piece smooth ribbon pull-tight seal manufactured from polypropylene material with a metal insert

Ribbon Diameter: 2mm

Sizes: 15cm, 20cm, 30cm

BIO



### HL Seal

The Acme HL Seal is a 2 piece smooth ribbon pull-tight seal manufactured from polypropylene material with a metal insert, available with or without a tear-off

Strap: 5.9mm

Sizes: 30cm, 40cm

BIO





## Pull - Tight Seals

### F Seal



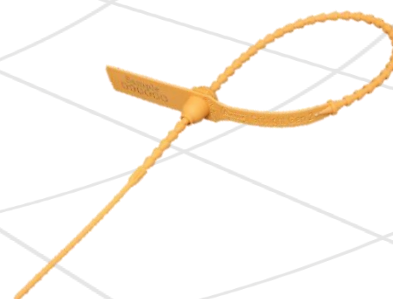
The Acme F Seal is a versatile pull-tight seal manufactured from polypropylene material.

Ribbon Diameter: 2.6mm

Sizes: 23cm

BIO

### Nylon Griptight Seal



The Acme Griptight Seal is a heavy-duty pull-tight seal manufactured from two dissimilar materials.

Ribbon Diameter: 3.9mm

Sizes: 28cm, 35cm

BIO

### PP Griptight Seal



The Acme PP Griptight Seal is a pull-tight seal manufactured from two dissimilar materials with a tear-off

Ribbon Diameter: 3.9mm

Sizes: 37cm

BIO

## Pull - Tight Seals

### M Seal



The Acme M Seal is a versatile pull-tight seal manufactured from polypropylene material

Strap: 2.75mm

Sizes: 23cm, 29cm BIO



### CS1 Metal Cable Seal

The Acme Cable Seal is manufactured in aluminium alloy and the cable is non preformed galvanized aircraft cable.

Cable Diameter: 1.5mm, 3.5mm, 5.0mm

Sizes: 25cm

### H Seal



The Acme H Seal is a 2 piece smooth ribbon pull-tight seal manufactured from polypropylene material with a metal insert

Strap: 7mm

Sizes: 30cm, 35cm, 40cm BIO

## Pull - Tight Seals

### X1 Seal

The Acme X1 Seal is a 2 piece smooth ribbon pull-tight seal manufactured from polypropylene material with a metal insert

Ribbon Diameter: 2mm

Sizes: 20cm, 30cm

BIO

### Luggage Seal

The Acme Luggage Seal is a 2 piece smooth ribbon pull-tight seal manufactured from polypropylene material with a metal insert

Ribbon Diameter: 2mm

Sizes: 20cm

BIO

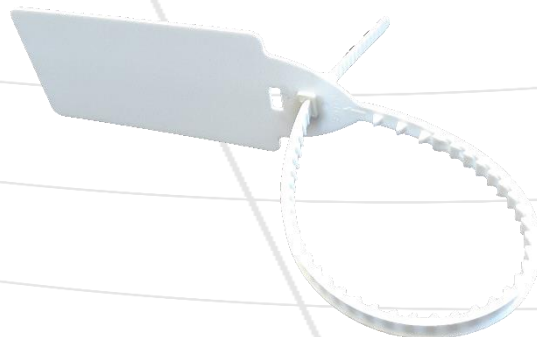
### Big Tag Seal

The Acme H Seal is a 2 piece smooth ribbon pull-tight seal manufactured from polypropylene material with a metal insert

Strap: 7mm

Sizes: 30cm, 35cm, 40cm

BIO





## Fixed Length Seals

### SM2 Seal



The Acme Seal SM2 Seal is a fixed length seal manufactured from polypropylene material

Strap: 5mm

Sizes: 18cm, 29cm

BIO

### Gen2 Bulldog Seal



The AcmeGen2 Bulldog Seal is a fixed length seal manufactured from two dissimilar materials.

Strap: 7.5mm

Sizes: 21cm

BIO

### Bulltip Seal



The Acme Bulltip Seal is a fixed length seal manufactured from two dissimilar materials with a tell-tale indicator

Strap: 7.5mm

Sizes: 21cm

BIO

## Fixed Length Seals

### Bolt Seal



The Acme Bolt Seal is an ISO 17712:2013 compliant high security bolt seal for high value container cargo shipments

Pin Diameter: 7.9mm

Sizes: 8.5cm (when locked)

### T Seal

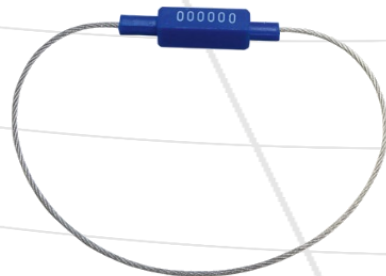


The Acme T Seal is a fixed length metal seal manufactured in tin plated steel

Strap: 10mm

Sizes: 10cm – 60cm

### CS2 Metal Cable Seal



The Acme CS Seal is a Cable seal where the locking mechanism and attached cable is protected with high impact ABS plastic.

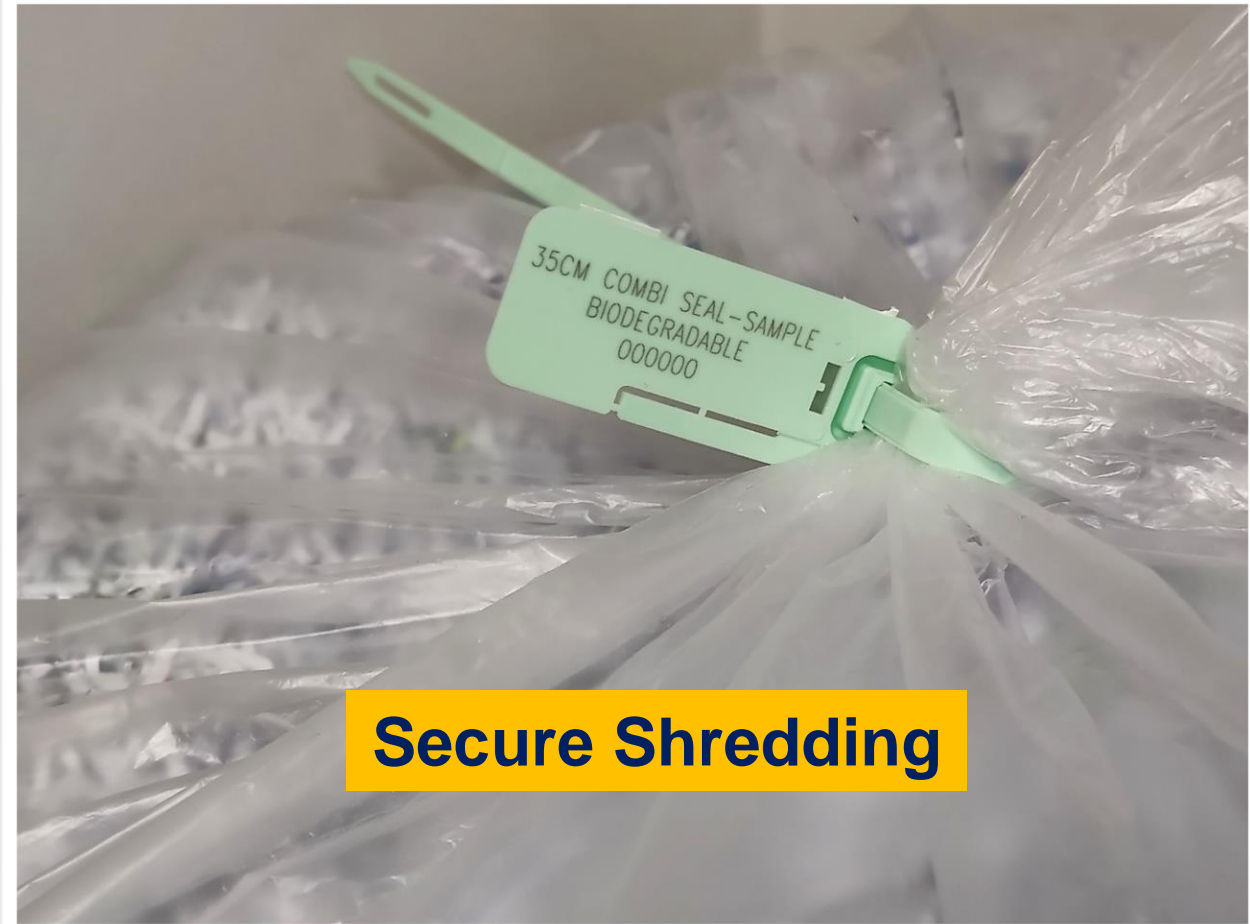
Cable Diameter: 1.8mm

Sizes: 30cm

## Anti Wardrobing



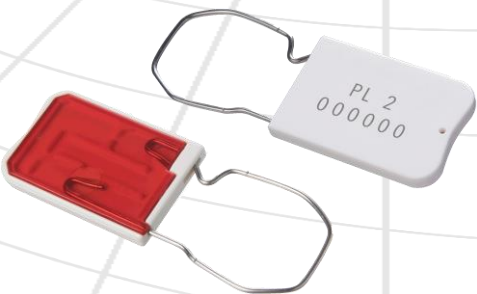
## Secure Shredding





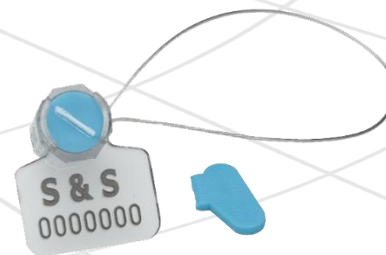
## Other Products

### PL2 Padlock Seal



The Acme PL2 is a Padlock seal manufactured from two materials, Styrene Acrylonitrile for the body and Stainless Steel for hook hasp. The cover is transparent so the user can see the seal is correctly locked and if any attempt is made to compromise the seal

### Twister Seal



The AMD Twister Seal is a two-part Polycarbonate wire seal that offers an alternative to lead and plastic wire seals, but can be applied without the use of a sealing tool

Wire: -0.7mm diameter

Standard Length: 50cm

### B Seal



The Acme B Seal is a special purpose pull tight seal manufactured from two dissimilar materials.

Operating Length: 22cm (overall 27cm)

Ribbon Diameter: 3.9mm

BIO



## Other Products

### Lead Seal - Round



**The Round Lead Seal is designed with two parallel holes and a knot chamber**

Recommended Applications include Gas, Water & Electric meters, Drums, Valves, Refineries, Post Bags, Cages & Lockers

### Lead Seal – Cross Hole



**The LS31F Cross-hole Lead Seal is designed so that the lashed wire is crimped together when the seal is compressed with the sealing tool.**

Recommended Applications include Gas, Water & Electric meters, Drums, Valves, Airline Baggage Pods, Containers, Rail Freight Refineries, Post Bags, Cages & Lockers.

### YP10 Plastic Seal



**The Acme YP10 Seal is manufactured from ABS food grade material and is suitable for applications where the traditional lead seals cannot be used.**

Recommended Applications include Gas, Water & Electric meters, Drums, Trailers, Food Industry & Cages

### Crimp Seal



**The Acme Crimp Seal is manufactured in high grade polypropylene material and is suitable for applications where the traditional lead seal cannot be used.**

Recommended Applications include Gas, Water & Electric meters, Taxi Meters, Drums, Trailers & Cages

## Other Products

### Clip Seal



The Clip Seal is a metal locking seal manufactured from tin plate steel. It is closed by hand without the use of special tools and is suitable for use with sealing wire or cord.



### Sealing Wire

The Acme Sealing Wire is available in galvanised steel, copper and stainless steel and can be supplied on plastic spools or in cut lengths.

### Sealing Tool



The Acme Sealing Tools are manufactured from cast carbon steel and chrome plated for protection.

The tools are supplied with round dies, plain or corrugated for effective crimping of all Acme Lead Seals.



### Copper Ferrules

Annealed copper, tin plated.

Available in 6mm or 12mm

Outer diameter of 4.2mm, with inner diameter of 1.8mm

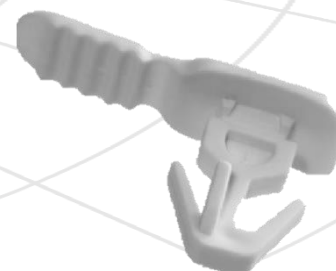
## Other Products

### Cable Ties



Our range of Cable Ties are manufactured from high grade Nylon 6.6 giving strength and flexibility. Manufactured in lengths from 20mm up to 1030mm , they are suitable for many applications, servicing the electronics, heavy electrical and engineering industries

### Tote Seals



Our range of Tote Seals are manufactured in Polypropylene and are suitable for all the most common Tote Boxes. They can be plain or numbered depending on your requirements. In our range we can support both round and elongated oval holes

### Security Bags



Acme security bags are manufactured from light weight strong, multilayer coextruded film, which gives excellent durability, reliability, and resistance to humidity

Sizes: 25.5cm x 35.5cm



## Other Products



### NT& PT Label Seals

The Acme NT label is manufactured from a matt polyester face material together with an adhesive on the reverse side that is virtually Non-Transferred to any applied surface either indoor or outdoor

Recommended Applications include Coin Boxes, ATM Cartridges, Airlines doors & compartments, Motor vehicle doors & compartments, Food & Beverage containers, First Aid boxes, meters & valves, Metal, Plastic or Glass surfaced containers



The Acme PT label is manufactured from a matt polyester face material together with an adhesive on the reverse side that is Partially Transferred to any applied surface either indoor or outdoor. When the label is lifted it reveals a highly visible security message 'OPEN VOID' as evidence the label seal has been opened

Recommended Applications include Evidence bags & boxes, security envelopes, metal glass or plastic containers, packing cartons, coin bags, cash boxes, meters & valves, pallet stretch or shrink film, coated paper boxes, & plastic or poly bags



# Electronic Locks



## Digi-Lock

**Digi-Lock** Prevents internal theft and fraud along the entire supply chain as soon as the seal is closed, it automatically generates a unique number that can be transferred to the cargo documentation.

If the display shows the same number when the cargo arrives, you can be sure that the seal was not opened during the trip. If several stops are made on the journey, a new unique number is generated each time.

## Watchdog-Lock

**WATCHDOG-Lock** Advanced electronic reusable security lock, to control position and status of trucks and containers, either from fixed station or from mobile devices (smart phone and tablet). Equipped with GPS and GSM/GPRS modules, it enables getting real time logistic information of identification together with the one of traceability.

Thanks to its advanced technical features, **WATCHDOG-Lock** allows you to enable features of:

**MONITORING**, thanks to its ability to communicate in real-time with IT systems for logistics and transport, it informs about the complete data on fleets and individual vehicles.

**ANALYSIS** of the data for the entire fleet relating to individual drivers, with the possibility of intervention and planning of activities.

**CONTROL**, through real-time access to data on vehicles and drivers, and to the position marked on the map by using GPS tracking.





**CARGO**  
security seals



**AVIATION**  
security seals



ACME  
EVERYWHERE...

»» **ACME** ««

**MARITIME**  
security seals





**How to contact us**



## **ACME SEALS LIMITED**

**Unit 9 Rosewood Business Park**

**Eastways**

**Witham**

**Essex**

**CM8 3AA**

**Tel: 01376 521841**

**Fax: 01376 521617**

**[www.acmeseals.com](http://www.acmeseals.com)**

**[acme@acmeseals.co.uk](mailto:acme@acmeseals.co.uk)**

**Call or Email for a quote today!**

