

Yes, it is
Stainless Steel
and it Closes Softly!



CONCEALED HINGE (STAINLESS STEEL)

180SUS



Manufacturer of **LAMP** brand products

Soft-close





SUS

- Passed the in-house neutral salt spray test, meeting the 480-hour corrosion resistance standard in accordance with ISO 9227 (equivalent to DIN EN 1670).

- Stainless Steel Mounting Plate **P.3**

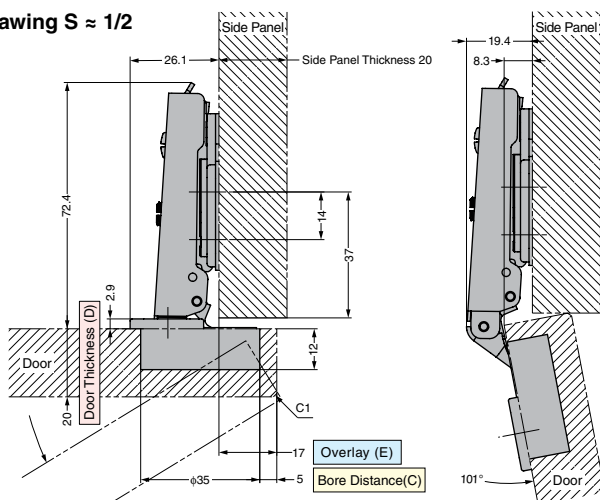
- Countersunk or round countersunk head wood/tapping screw 3.5

- The body of the hinge, excluding the damper, is made of stainless steel.

RnHS	CAD	Item Code	Item Name	Type	Material	Finish	Weight (g)	Carton
-		160-056-878	180SUS-D46-19T	Built-in Damper	Stainless Steel (SUS304)	Barrel	62	200
-		160-056-879	180SUS-C46-19T	w/ Catch		Polishing	58	200

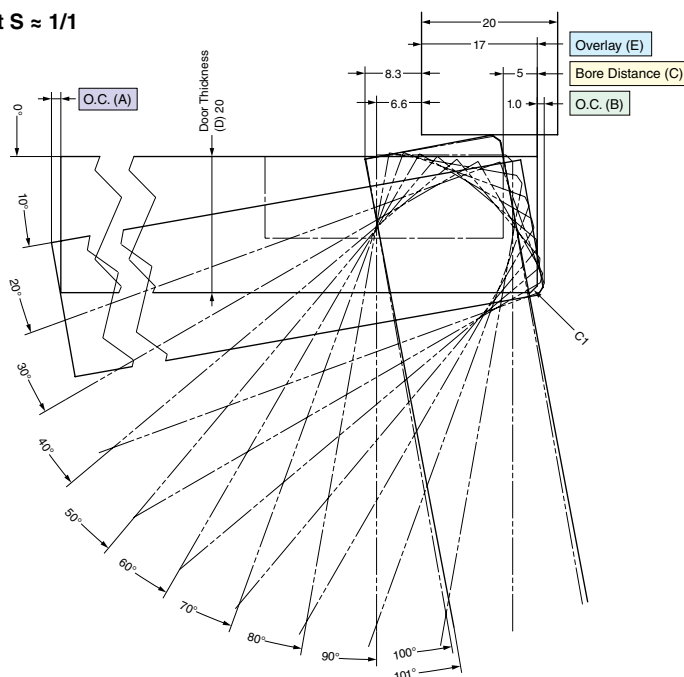
Mounting Plate (sold separately) is required for installation. Please order separately.

Installation drawing S $\approx 1/2$



Drawing above shows 180SUS-D46-19T or 180SUS-C46-19T on 180SUS-P6T mounting plate: 5 mm bore distance, 20 mm door thickness. 17 mm overlap.

Locus chart S $\approx 1/1$



Drawing above shows 5 mm bore distance, 20 mm door thickness, 20 mm side panel thickness, 17 mm overlay.

Bore Distance (C)	3	4	5
Overlay (E)	15	16	17

For standard type mounting plate 0 mm thickness.
Turning the overlay adjustment screw to adjust
overlay. (Adjustment range: ± 2 mm)

Clearances for door edge O.C. (A) and hinge side O.C. (B) are necessary. O.C. (A) and (B) change depending on door thickness and bore distance (C). Refer to locus chart and tables below when designing cabinets.

Door Thickness (D)	Bore Distance (C)		
	3	4	5
15	0.1	0.1	0.1
16	0.2	0.2	0.2
17	0.4	0.4	0.3
18	0.6	0.5	0.5
19	0.8	0.8	0.8
20	1.1	1.1	1.0
21*	1.6	1.5	1.4
22*	2.3	2.0	1.8
	O.C. (B)		

*Please refer to the locus chart if door thickness is over 20 mm. (O.C. (B) can be reduced by machining the R and C faces on the door.)

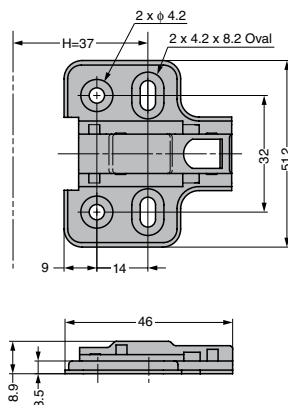
Door Thickness (D)	Door Width				
	300	400	450	500	600
	0.24	0.18	0.15	0.14	0.12
20	O.C. (A)				

*Reference values for door widths 500 and 600.

Technical drawing of a door handle assembly. The drawing shows a side view of a door with a handle. Key dimensions and labels include:

- Door**: Label for the main body of the door.
- 27**: Dimension for the distance from the door edge to the center of the handle.
- 175+**: Dimension for the distance from the door edge to the center of the bore.
- Bore Distance (C)**: Label for the distance from the door edge to the center of the bore.
- Front edge**: Label for the edge of the door.
- 62.5**: Dimension for the distance from the door edge to the center of the handle.
- 45**: Dimension for the distance from the door edge to the center of the handle.
- 38.1**: Dimension for the distance from the door edge to the center of the handle.
- 30.5**: Dimension for the radius of the handle.
- Depth 12 mm**: Label for the depth of the handle.

Door Dimensions and Number of Hinges P.3



• Mounting Plate for 180SUS Concealed Hinge.

SUS

Specifications

- Door Adjustment Function (± 2 mm up/down)
- Thickness: 0 mm (Standard Thickness)
- Passed the in-house neutral salt spray test, meeting the 480-hour corrosion resistance standard in accordance with ISO 9227 (equivalent to DIN EN 1670).

RoHS	CAD	Item Code	Item Name	Material	Finish	Weight (g)	Carton
-	2030	160-056-880	180SUS-P6T	Stainless Steel (SUS304)	Barrel Polishing	15	400

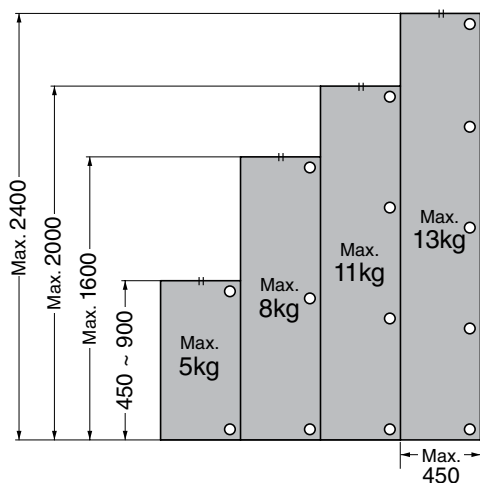
Door Size and Recommended Hinge Quantity

The number of hinges mounted varies according to the door dimensions. For doors of the same weight, a larger distance between the upper and lower hinges will enhance strength.

Generally, when using 3 hinges, the intermediate hinge should be a little higher than the centre point between the upper and lower hinges for enhanced strength.

Note: Use the figure only as a guideline.

■ 180SUS



Door Width	Door Thickness	Installation Pitch
Max. 450	Max. 20	Min. 300

Caution

- Set door centre of gravity at door centre.
- If you want to increase the door width, please increase the number of hinges accordingly.
- Attach the upper and lower hinges within 100 mm from the edge of the door. When using three or more, install at regular intervals.
- Figures shown in the diagram are only indicative. Please always test before finalising your design.
- Please contact us for any other configuration.
- All screw holes should be used.

Concealed Hinges - Extra Highlights

5-speed Adjustable Soft-Close

CONCEALED HINGE

A NEW STEP FOR HINGE TECHNOLOGY

OLYMPIA
360 POWERED BY Lapcon



Successfully passed 200,000 cycles test.

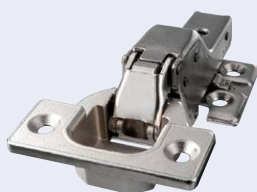


One screwdriver for a one-handed 3D adjustment.

Powerful Hinges

HEAVY-DUTY CONCEALED HINGE

Can also be used with mirrored doors



J95
Opening Angle 95°



J160
Opening Angle 160°
With Soft Close

2 pieces
support
25kg
doors

3 pieces
handle
40kg!



Max.
2400
mm



SUGATSUNE KOGYO CO.,LTD.
Manufacturer of **LAMP** brand products

Global Headquarters(Export Dept.)

SUGATSUNE KOGYO CO., LTD.
TOKYO OFFICE & SHOWROOM

<https://global.sugatsune.com/global/en/>
Phone +81-3-3866-2260
E-mail: export@sugatsune.co.jp

North America

SUGATSUNE AMERICA, INC.
LOS ANGELES MAIN OFFICE

<https://www.sugatsune.com/>
Phone +1-310-329-6373
E-mail: sales@sugatsune.com

CHICAGO MIDWEST
DISTRIBUTION CENTER

Phone +1-630-317-7072
E-mail: sales@sugatsune.com

SUGATSUNE CANADA, INC.
MONTREAL OFFICE

<https://www.sugatsune.ca/>
Phone +1-514-312-5267
E-mail: support@sugatsune.ca

Europe

SUGATSUNE KOGYO(UK)LIMITED
READING OFFICE

<https://www.sugatsune.co.uk/>
Phone +44-1189-272-955
E-mail: sales@sugatsune.co.uk

SUGATSUNE EUROPE GmbH
DÜSSELDORF OFFICE & SHOWROOM

<https://www.sugatsune.eu/>
Phone +49-211-53812-900
E-mail: sales@sugatsune.eu

Asia

SUGATSUNE SHANGHAI CO., LTD.
SHANGHAI OFFICE & SHOWROOM

<https://global.sugatsune.com/cn/zh-cn/>
Phone +86-21-3632-1858
E-mail: lamp@sugatsune.com.cn

GUANGZHOU OFFICE & SHOWROOM

Phone +86-20-6639-3554
E-mail: lamp@sugatsune.com.cn

SUGATSUNE KOGYO INDIA PRIVATE LIMITED
MUMBAI OFFICE & SHOWROOM

<https://global.sugatsune.com/in/en/>
Phone +91-9867299597
E-mail: sales@sugatsune.in
Phone +91-9867299597 / +91-1145093636
E-mail: sales@sugatsune.in

DELHI OFFICE & DISPLAY STUDIO

BENGALURU DISPLAY CENTER

Phone +91-9867299597 / +91-8419900924
E-mail: sales@sugatsune.in

CHENNAI SHOWROOM

Phone +91-2228314490
E-mail: sales@sugatsune.in

PUNE DISPLAY CENTER

Phone +91-9867299597
E-mail: sales@sugatsune.in

SUGATSUNE KOREA CO., LTD.
INCHEON OFFICE

<https://global.sugatsune.com/kr/kr/>
Phone +82-32-220-0603
E-mail: sales@sugatsune-korea.co.kr

Social Media



2025 SGTN JPN