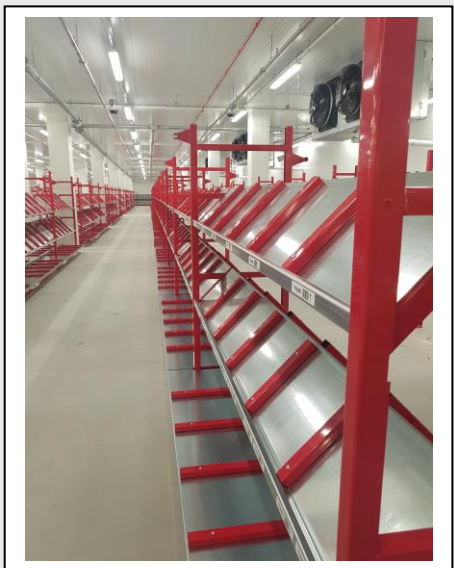
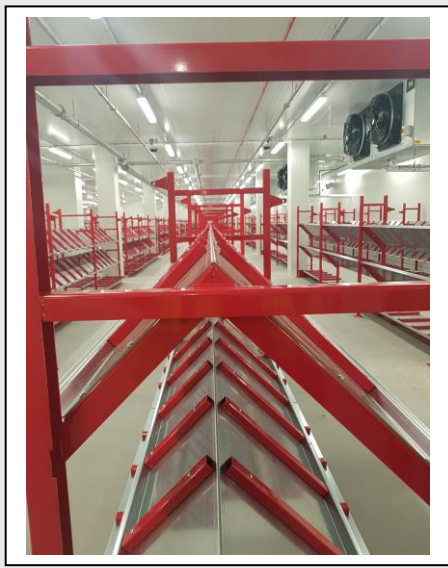
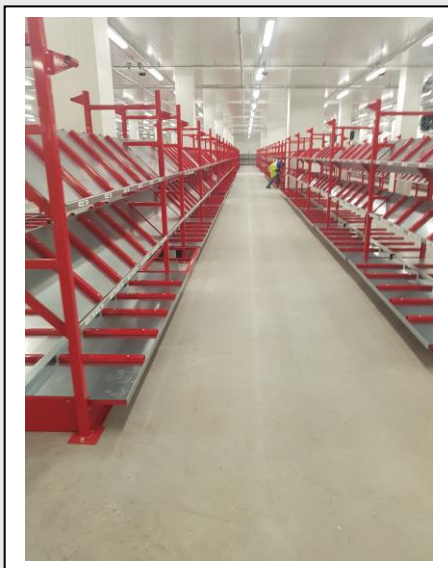


Case Study 17

Metal Shelving

Project: Manufacture metal shelving for tote boxes.
Sector: Storage
Product: Welded frames, Sheet metal panels and tubes
Project Completion: 2017

A vast project that consisted of manufacturing 425 bays of shelving to support plastic tote boxes. This involved making 186 Double sided frames, 154 Singles frames, 987 shelves, miscellaneous bracketry and plinths. The frames were constructed from folded metal sections then welded together to form a structural frame. Galvanized shelf panels are then bolted to these frames to form bays of shelving. Dividers (tubes) needed to be bolted to the structure to compartmentalise each shelf for tote boxes.



C D S

HEET METAL (Engineering) Ltd

Monarch Works
Station Road North
Belvedere Kent
DA17 6JL

Telephone 020 8311 2056
Fax 020 8310 7727
Email: info@cdsheetmetal.com
www.cdsheetmetal.com