

AUTOSLEEVE K101

COMPACT FULLY AUTOMATIC SLEEVER

KEYMAC
PACKAGING SYSTEMS



Easy, three-dimensional size change

Automatic programme set-up and a simple mechanical adjustments make size change achievable in less than ten minutes – a quick and easy changeover, with minimal downtime.

Large size range

The carton size range of the K101 is generous to cater for a wide range of sleeving applications, offering maximum flexibility. The K101 has the flexibility to run round, oval pots and rectangular trays with apertures and watch-strap style part sleeves.

Stainless Steel

The K101 has a rigid, robust, corrosion-resistant stainless steel construction, to comply with the most demanding dry or wet production environments. Where wash-down is required, the K101's electrical cabinet can be upgraded to IP65.

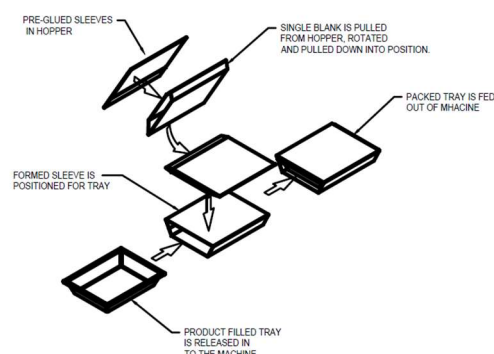
The Keymac K101 is specifically designed to automatically apply pre-glued sleeves onto ready meal trays at up to 80 packs per minute.

Accepting trays as standard narrow side leading, no pack rotations are required upstream of the K101 machine. The simple proven design offers high efficiency with a competitive price that has unrivalled return on investment over hand sleeving.

Low cost of ownership and increased sleeving speeds make this machine an excellent choice to provide the next step in process efficiency and productivity.



Full carton control during sleeving

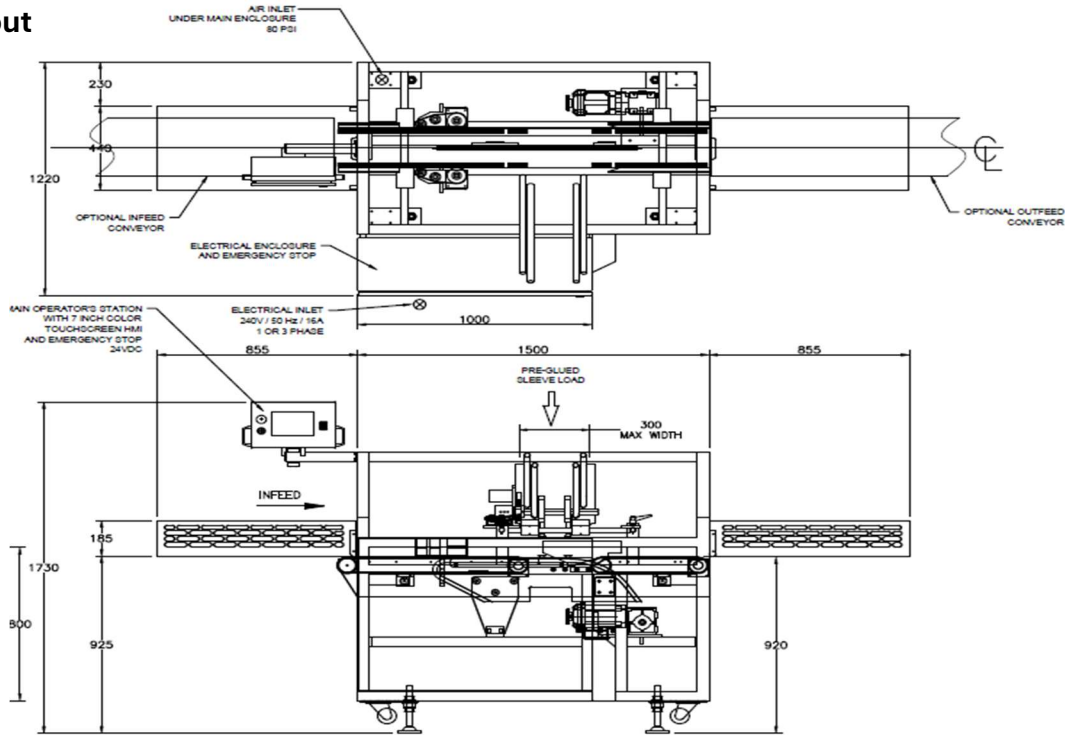


AUTOSLEEVE K101

COMPACT FULLY AUTOMATIC SLEEVER



Standard Layout



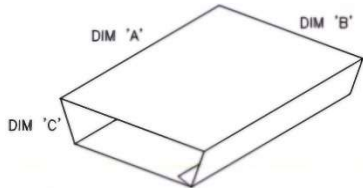
Standard features

- Continuous motion to 80 cpm.
- Automatic infeed timing of random product flow.
- Ability to sleeve rectangular, round, oval shaped PET and paperboard trays.
- Full sleeves and watchstrap sleeves with sleeve positioning possible.
- Adjustable format change without change parts, within 10 minutes.
- Servo driven carton feeder.
- HMI Touch screen control.
- Stainless steel durable construction.
- CE / UKCA Mark.
- Casters for portability (levelling feet included).
- Low carton stack alarm and beacon light.

Optional features

- Full IP65 washdown.
- Carton coding interlocks.
- Infeed & outfeed conveyors.
- Rotary Pack-off table.

Size Range



	Max	Min
Length A	300mm	75mm
Width B	11.8"	3"
Depth C	200mm	78mm
	7.8"	3"
	75mm	20mm
	3"	0.8"



Keymac Packaging Systems Ltd