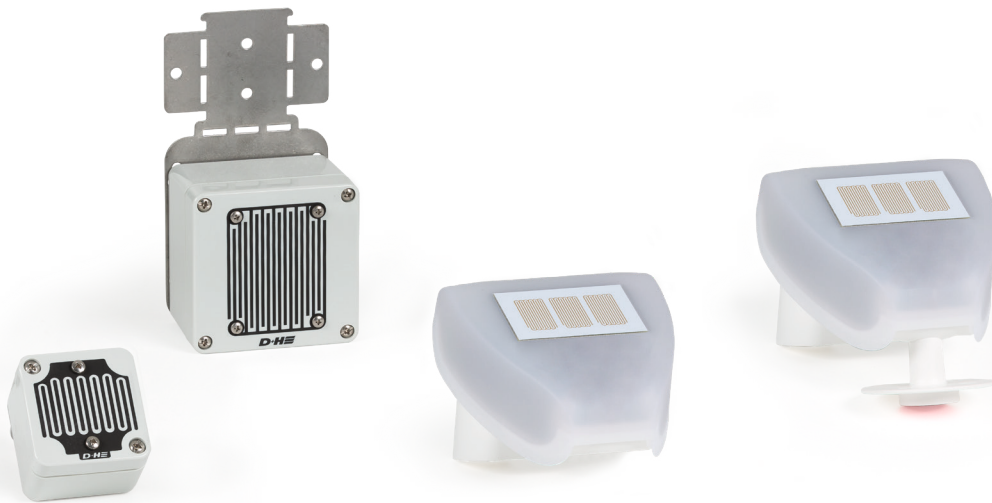



WRS-S / RS-S / VRS / REM



Performance features


- » Suitable for connecting to all D+H SHEV and ventilation control panels
- » Also available with radio signal (REM 801-RC)
- » Flexible installation
- » Integrated wind signal emitter (optional)

Type	Art. No.	Description	Technical data												
WRS-S	70.602.17	Wind rain sensor <ul style="list-style-type: none">» Wind switching threshold via DIP switch configurable from 1 m/s to 30 m/s» Rain signal is stored for approx. 5 minutes (rain hold time)» Signal retention time of the wind signal for approx. 10 minutes» Heated sensor area» Incl. mast and wall mounting	<table><tr><td>Supply</td><td>24 V DC / 0.09 A</td></tr><tr><td>Type of protection</td><td>IP 44</td></tr><tr><td>Temperature range</td><td>-30 °C ... +50 °C</td></tr><tr><td>Housing</td><td>Plastic</td></tr><tr><td>W x H x D</td><td>96 x 77 x 118 mm</td></tr><tr><td>Weight</td><td>0.18 kg</td></tr></table>	Supply	24 V DC / 0.09 A	Type of protection	IP 44	Temperature range	-30 °C ... +50 °C	Housing	Plastic	W x H x D	96 x 77 x 118 mm	Weight	0.18 kg
Supply	24 V DC / 0.09 A														
Type of protection	IP 44														
Temperature range	-30 °C ... +50 °C														
Housing	Plastic														
W x H x D	96 x 77 x 118 mm														
Weight	0.18 kg														






Type	Art. No.	Description	Technical data												
RS-S	70.602.19	Rain sensor <ul style="list-style-type: none">» The rain signal can be stored for up to approx. 300 seconds (rain hold time)» The rain hold time is adjustable between 10-300 seconds» Heated sensor area» Switching contact: Changeover contact max. 1 A» Incl. mast and wall mounting	<table><tr><td>Supply</td><td>24 V DC / 0.06 A</td></tr><tr><td>Type of protection</td><td>IP 44</td></tr><tr><td>Temperature range</td><td>-30 °C ... +50 °C</td></tr><tr><td>Housing</td><td>Plastic</td></tr><tr><td>W x H x D</td><td>96 x 77 x 118 mm</td></tr><tr><td>Weight</td><td>0.17 kg</td></tr></table>	Supply	24 V DC / 0.06 A	Type of protection	IP 44	Temperature range	-30 °C ... +50 °C	Housing	Plastic	W x H x D	96 x 77 x 118 mm	Weight	0.17 kg
Supply	24 V DC / 0.06 A														
Type of protection	IP 44														
Temperature range	-30 °C ... +50 °C														
Housing	Plastic														
W x H x D	96 x 77 x 118 mm														
Weight	0.17 kg														






Type	Art. No.	Description	Technical data														
VRS 10	30.300.90	Rain detector <ul style="list-style-type: none">» For rain monitoring of ventilation flaps in conjunction with 24 V DC SHEV and ventilation control panels» Rain signal is stored for approx. 2 minutes (rain hold time)» Rain sensor in compact design, 24 V DC» Heated sensor area	<table><tr><td>Supply</td><td>24 V DC / 0.05 A</td></tr><tr><td>Type of protection</td><td>IP 65</td></tr><tr><td>Temperature range</td><td>-20 °C ... +60 °C</td></tr><tr><td>Housing</td><td>Polycarbonate</td></tr><tr><td>Colour</td><td>Grey (~ RAL 7035)</td></tr><tr><td>W x H x D</td><td>50 x 70 x 66 mm</td></tr><tr><td>Weight</td><td>0.18 kg</td></tr></table>	Supply	24 V DC / 0.05 A	Type of protection	IP 65	Temperature range	-20 °C ... +60 °C	Housing	Polycarbonate	Colour	Grey (~ RAL 7035)	W x H x D	50 x 70 x 66 mm	Weight	0.18 kg
Supply	24 V DC / 0.05 A																
Type of protection	IP 65																
Temperature range	-20 °C ... +60 °C																
Housing	Polycarbonate																
Colour	Grey (~ RAL 7035)																
W x H x D	50 x 70 x 66 mm																
Weight	0.18 kg																

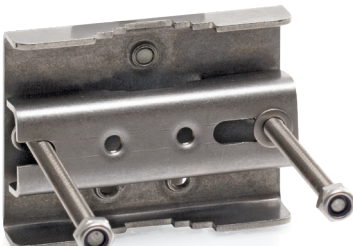




Type	Art. No.	Description	Technical data																		
REM 801-RC	30.302.20	Wireless rain detector <ul style="list-style-type: none">» Presence monitoring in wireless operation» Signal output via radio or switching contact» Integrated test function for controlling the reception quality» Rain signal is stored for approx. 5 minutes (rain hold time)» Heated sensor area (not possible in battery operation)	<table><tr><td>Input voltage</td><td>24 V DC</td></tr><tr><td>Type of protection</td><td>IP 43</td></tr><tr><td>Temperature range</td><td>-20 °C ... +60 °C</td></tr><tr><td>Transmitter range</td><td>Max. 100 m free field</td></tr><tr><td>Radio frequency</td><td>868.3 MHz / FSK</td></tr><tr><td>Housing</td><td>Polycarbonate</td></tr><tr><td>Colour</td><td>Grey (~ RAL 7035)</td></tr><tr><td>W x H x D</td><td>80 x 82 x 55 mm</td></tr><tr><td>Weight</td><td>0.50 kg</td></tr></table>	Input voltage	24 V DC	Type of protection	IP 43	Temperature range	-20 °C ... +60 °C	Transmitter range	Max. 100 m free field	Radio frequency	868.3 MHz / FSK	Housing	Polycarbonate	Colour	Grey (~ RAL 7035)	W x H x D	80 x 82 x 55 mm	Weight	0.50 kg
Input voltage	24 V DC																				
Type of protection	IP 43																				
Temperature range	-20 °C ... +60 °C																				
Transmitter range	Max. 100 m free field																				
Radio frequency	868.3 MHz / FSK																				
Housing	Polycarbonate																				
Colour	Grey (~ RAL 7035)																				
W x H x D	80 x 82 x 55 mm																				
Weight	0.50 kg																				

A grey, rectangular wireless rain detector with a black mounting bracket on top. The front face features a black grille with vertical slats. The device is shown against a white background.



Type	Art. No.	Description	Technical data	
AMB	70.600.05	Antenna mast mounting » Suitable for installation to an antenna mast for diameters of 42 to 60 mm	Colour	Silver
			Weight	0.35 kg

