

## Smoke Ventilation Louvre Vent

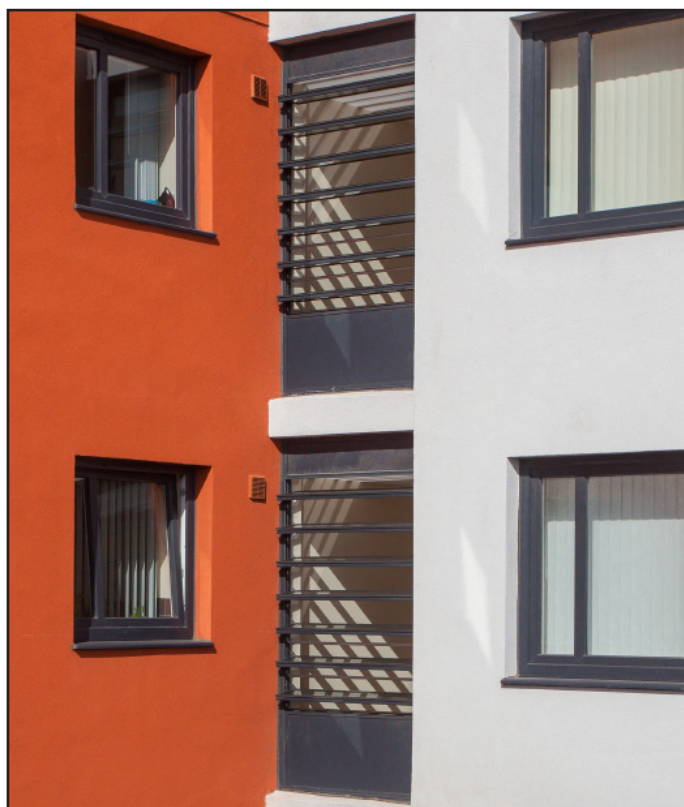
### Certified NSHEV louvre

Ideal for end of corridor requirements, particularly within high-rise buildings.

The aluminium-framed louvres are tested in accordance with EN 12101-2 in order to provide dual-purpose natural and smoke ventilation.

- EN 12101-2 certified
- Operated by D+H louvre drives
- Opening within 60 seconds
- Anti-trap protection
- Multiple sizes and bespoke designs available
- Dual purpose, smoke and natural ventilation
- Single, double or triple-glazed blades available, or aluminium in-fill panels
- Can fit into standard apertures or glazed into curtain walling

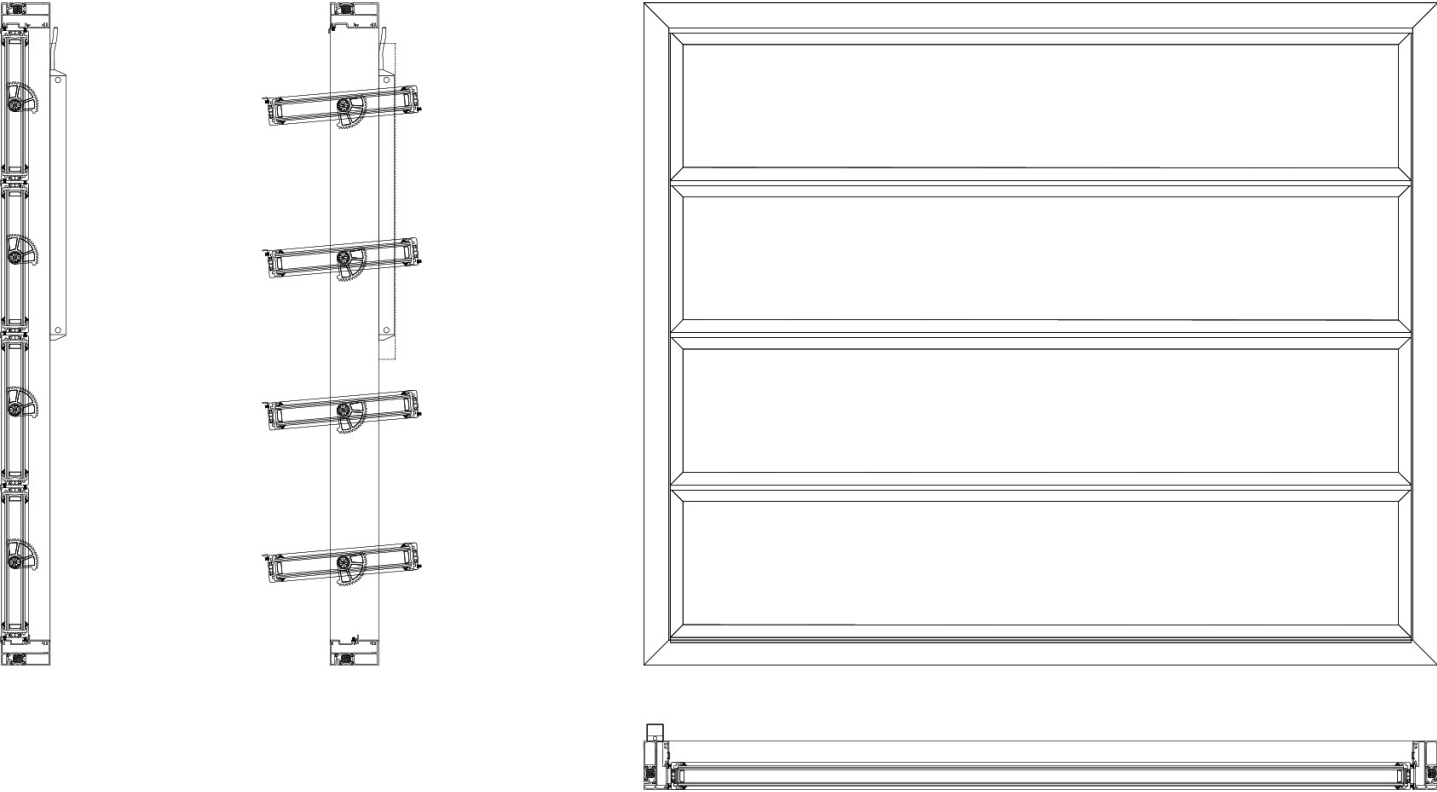
In case of fire, the louvre will open automatically (as part of the smoke ventilation system), drawing the smoke out. This will keep escape routes free and provide access for the emergency services.



# Smoke Ventilation Louvre Vent

## Product cross section

Glazed louvres are made to order in sizes to suit openings and free area requirements.



## Technical data - typical values

Certification	EN 12101-2
Reliability class (Re)	1000
Wind load class (WL)	Up to 3000 N/m <sup>2</sup>
Resistance to heat	B300 (300 °C)
Low ambient temperature rating (T)	-5°C
Opening time	<60 seconds
Voltage	24v
Current consumption	0.8 amp (per drive)
Cable	2.5m silicone

Email us at [enquiry@dh-partner.co.uk](mailto:enquiry@dh-partner.co.uk) for more information.