



## Core Skills

- *Rapid Prototyping & Wireframing*
- *Agile Sprint Execution*
- *Cross-Platform Development*
- *Backend-as-a-Service Integration*
- *Data-Driven Iteration*

## Our Strengths



### Speed to Market

*Launch MVPs quickly to validate ideas and gain traction.*



### Adaptability to Change

*Structure MVPs to pivot easily with real user feedback.*



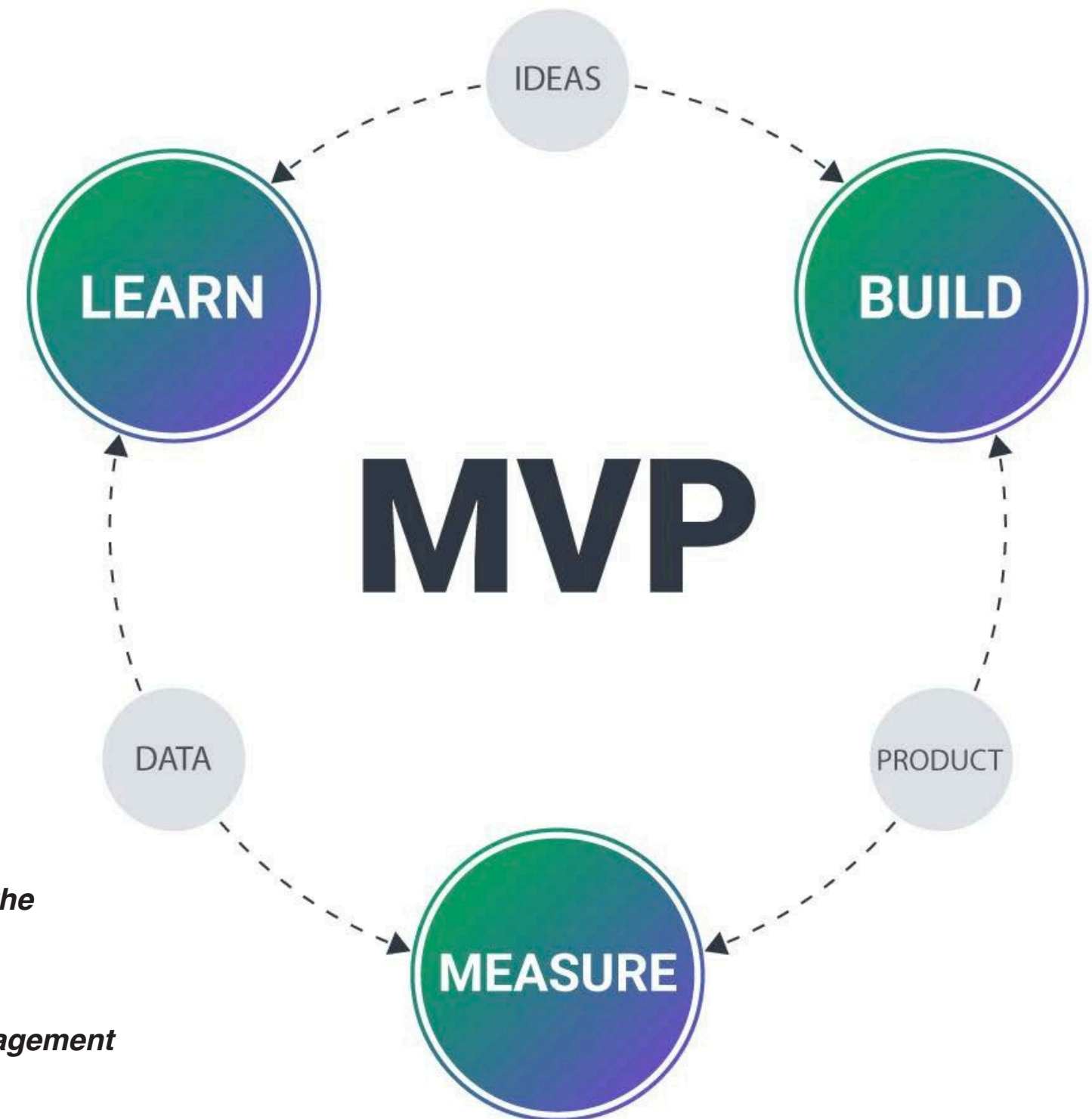
### Focus on What Matters

*Build only essential features that solve the core problem.*



### User-First Design Thinking

*Design around user needs to boost engagement and fit.*



## Core Skills

- *Cloud Infrastructure Design*
- *CI/CD Pipeline Implementation*
- *Containerization & Orchestration*
- *Multi-Cloud & Hybrid Cloud Strategies*
- *Cloud Security & Compliance*

## Our Strengths



### Scalability by Design

*Architect systems to grow seamlessly with user and traffic demand.*



### High Availability

*Ensure minimal downtime through redundancy, failover, and smart architecture.*



### Security Built-In

*Embed security controls from the ground up, not bolted on.*



### Cost Efficiency

*Optimize resources and spend with right-sized, cloud-native solutions.*



# Team Augmentation



## Core Skills

- *On-Demand Talent Integration*
- *Agile Collaboration*
- *Technical Versatility*
- *Transparent Communication*
- *Instant Team Upscaling*

## Our Strengths



### Fast Resource Scaling

*Add skilled engineers quickly to meet project demands fast.*



### Reduced Hiring Overhead

*Skip recruitment delays & get vetted talent without long lead times.*



### Cultural Fit Focus

*Match team members who align with client workflows and values.*

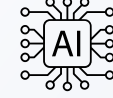


### Flexible Engagement Models

*Scale up or down easily based on changing business needs.*







## Core Skills

- *Machine Learning Model Development*
- *Data Preprocessing & Feature Engineering*
- *Model Deployment & MLOps*
- *Natural Language Processing (NLP)*
- *Computer Vision Engineering*

## Our Strengths



### Production-Ready Models

*Deliver AI systems that work reliably in real environments.*



### Scalable AI Infrastructure

*Design ML systems that handle large-scale training and inference.*



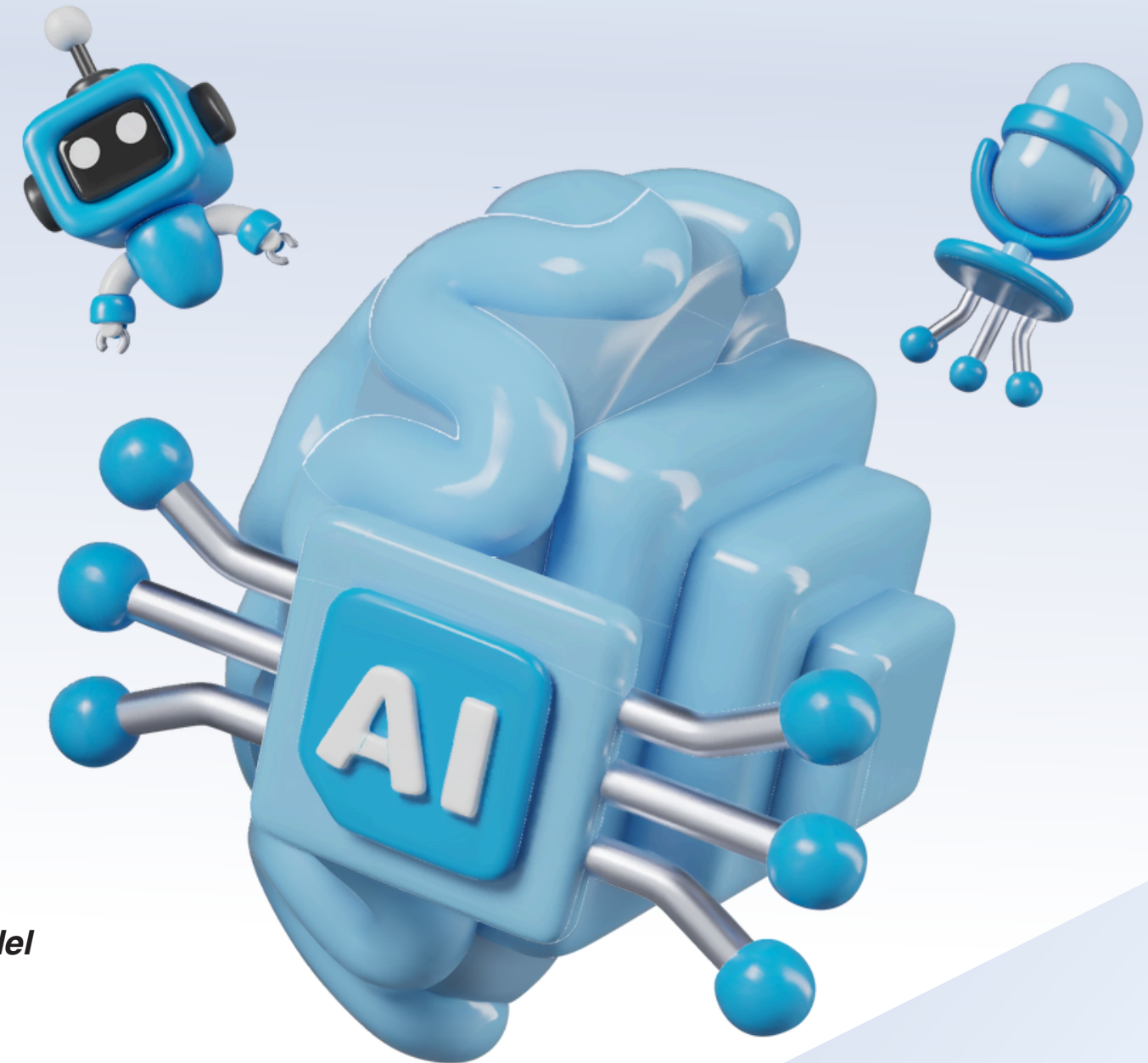
### End-to-End Pipeline Expertise

*Own everything from data prep to live model deployment.*



### Business-Driven Outcomes

*Build models that solve real problems, not just experiments.*





## Core Skills

- *Data Pipeline Development*
- *ETL/ELT Process Automation*
- *Cloud Data Warehousing*
- *Real-Time Data Streaming*
- *Data Quality & Governance*

## Our Strengths



### Scalable Data Infrastructure

*Build pipelines and storage to handle growing data volumes.*



### Reliable, Clean Data

*Ensure accuracy, consistency, and integrity across all data flows.*



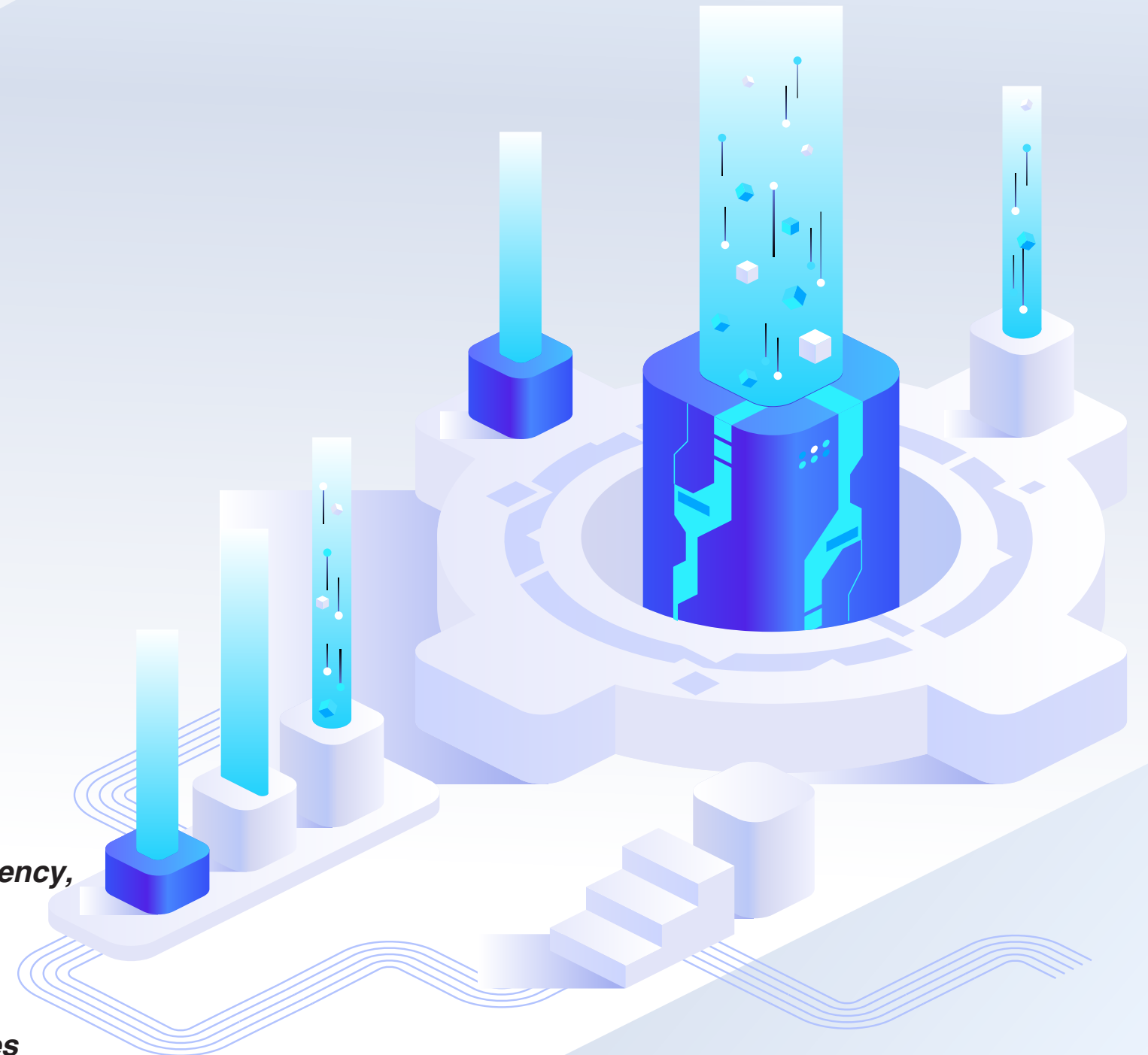
### Real-Time Data Access

*Deliver insights instantly through low-latency, live data systems.*



### Business-Aligned Architecture

*Design systems that match real use cases and reporting needs.*





## Core Skills

- *Dashboard & Report Development*
- *Data Visualization*
- *KPI & Metric Design*
- *Self-Service BI Enablement*
- *Advanced Analytics & Insights Extraction*

## Our Strengths



### Actionable Dashboards

*Deliver clear, real-time visuals that drive faster decisions.*



### Custom KPI Frameworks

*Define metrics that reflect what really matters to teams.*



### Data-Driven Strategy

*Turn raw data into insights that guide business growth.*



### Cross-Team Accessibility

*Empower non-technical users with intuitive, self-serve analytics tools.*





# Custom Software Development →



## Core Skills

- *Enterprise Business Solutions*
- *Application/System Modernization*
- *Native & Cross-Platform Mobile Apps*
- *API Design & Integration*
- *Frontend & Backend Development*

## Our Strengths



### Tailored Solutions

*Build software precisely aligned with unique business requirements.*



### Speed & Quality Balance

*Deliver fast without compromising code quality or reliability.*



### Future-Proof Architecture

*Design systems built to scale and evolve over time.*



### End-to-End Ownership

*Handle every phase from ideation to deployment with full accountability.*





## Core Skills

- **Power Apps Development**
- **Power Automate Workflow Automation**
- **Power BI Dashboards & Reports**
- **Dataverse & Integration with Microsoft 365**
- **Custom Connectors & API Integration**

## Our Strengths



### Rapid App Development

*Launch low-code business apps fast with Power Platform tools.*



### Automated Workflows

*Replace manual tasks with smart, automated business processes.*



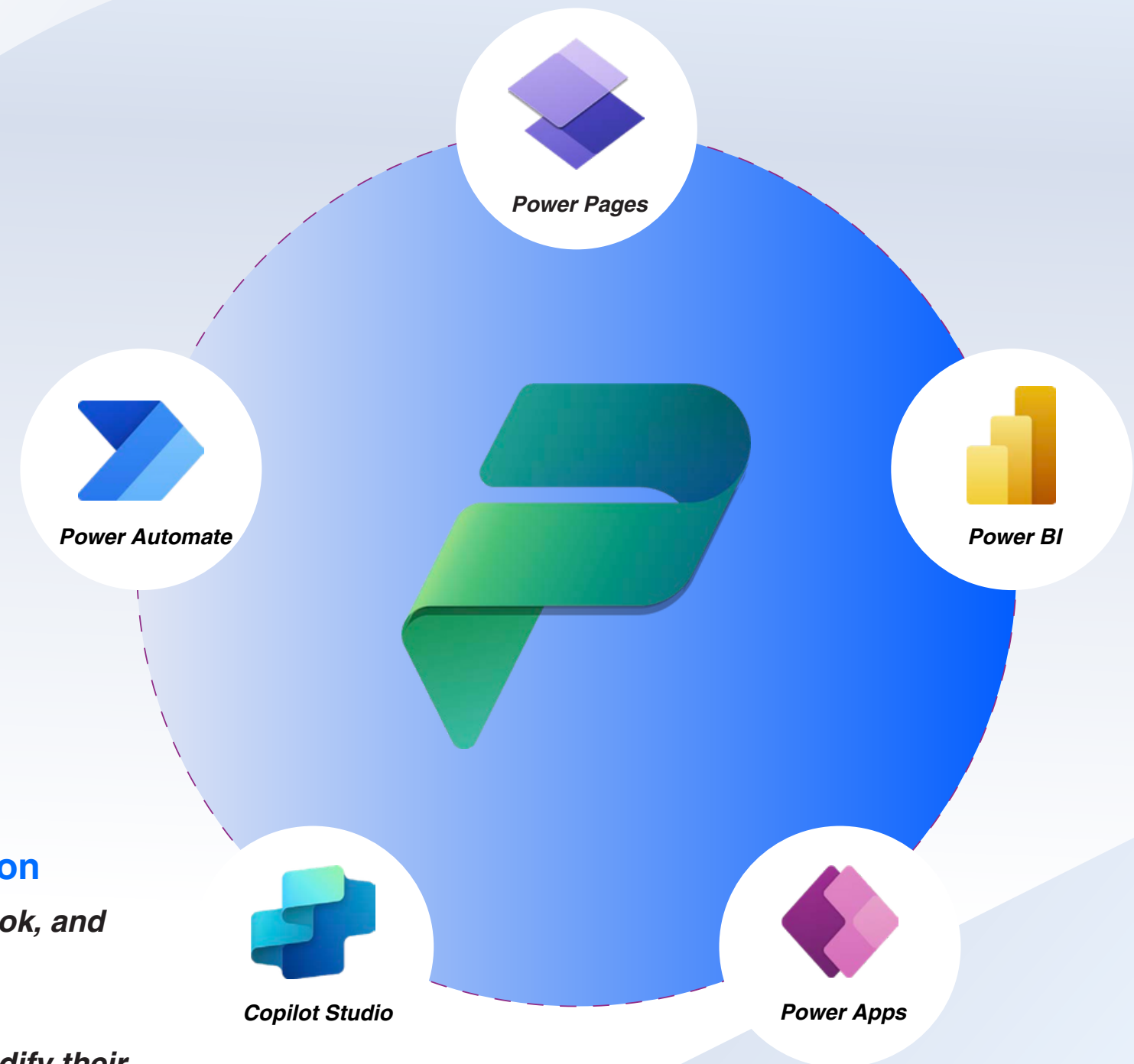
### Seamless Microsoft 365 Integration

*Connect with Teams, SharePoint, Outlook, and Dynamics easily.*



### Empowered Business Users

*Enable non-developers to build and modify their own tools.*







## Core Skills

- *User Research & Persona Development*
- *Wireframing & Prototyping*
- *UI Design Systems & Style Guides*
- *UX Testing & Iteration*
- *Responsive & Accessible Design*

## Our Strengths



### User-Centric Design

*Craft interfaces driven by real user needs and behavior.*



### Consistency Across Platforms

*Ensure unified look and feel across web, mobile, and more.*



### Seamless User Journeys

*Design flows that reduce friction and boost engagement fast.*



### Rapid Prototyping

*Visualize ideas quickly with interactive, testable prototypes.*



## Core Skills

- *Requirements Gathering & Documentation*
- *Stakeholder Engagement & Communication*
- *Process Mapping & Optimization*
- *Data Analysis for Business Insights*
- *Functional Specifications & User Stories*

## Our Strengths



### Precise Requirement Mapping

*Translate business needs into precise, actionable technical requirements.*



### Improved Business Processes

*Identify inefficiencies and streamline workflows across departments.*



### Bridge Between Teams

*Align stakeholders, developers, and users with clear communication.*



### Insight-Driven Decisions

*Use data and analysis to support smarter business strategies.*



## Core Skills

- *Functional & Non-Functional Testing*
- *Web & Mobile App Testing*
- *API & Database Validation*
- *Test Automation Frameworks*
- *CI/CD & Test Management Integration*

## Our Strengths



### End-to-End Coverage

*Test across frontend, backend, APIs, and mobile platforms seamlessly.*



### Built for DevOps

*Integrate QA deeply into CI/CD pipelines for faster delivery.*



### Automation-Driven Efficiency

*Speed up regression cycles with scalable, reusable test scripts.*



### Real-Time Visibility

*Track progress, bugs, and results instantly with modern test tools.*

