



WHITEPAPER

# OPTIMISING BROADBAND PERFORMANCE IN CARE HOMES

MODERN WI-FI FOR THE MODERN CARE  
HOME



**AdaptiveComms**  
Successful in Communication & IT



# The Importance of Connection

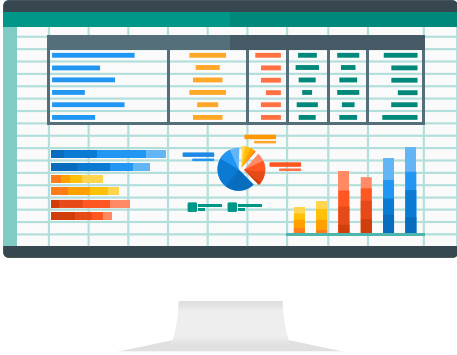
In today's digital age, a reliable internet connection is crucial for care homes to ensure seamless operations and efficient care delivery. With the increasing reliance on digital tools for managing care records, communication, and entertainment for residents, it is essential to maintain a robust and stable internet connection.

Through this whitepaper, we're here to provide you a comprehensive guide on how care homes can effectively test their broadband performance, interpret the results, and determine whether an upgrade is necessary.



# Why Broadband Performance Matters in Care Homes

Care homes utilise the internet for various critical functions:



## Care Management Software

Care management software require stable connections for real-time data entry and access.

## Communication

Video calls and messaging for staff communication and resident contact with family members.



## Entertainment

Streaming services, online games, and other internet-based activities for residents.

## Administrative Tasks

Efficient handling of emails, online training, and other office work.



01704 540547



[info@adaptivecomms.co.uk](mailto:info@adaptivecomms.co.uk)



[adaptivecomms.co.uk](https://adaptivecomms.co.uk)



**AdaptiveComms**  
Phones | IT | Cyber | Data Networks | WiFi

# How to Test Your Broadband

## Testing Methods

### Hardwired and Wi-Fi Connections:

- **Hardwired (Ethernet) Connection:** Provides a more stable and faster connection, minimising interference and signal degradation.
- **Wi-Fi Connection:** Tests the performance of wireless networks, which are prone to signal interference and range issues.



### Devices

- **Computers and Laptops:** Typically used for administrative tasks and care management software.
- **Mobile Devices:** Phones and tablets are often used for on-the-go tasks and by residents for communication and entertainment.



01704 540547



[info@adaptivecomms.co.uk](mailto:info@adaptivecomms.co.uk)



[adaptivecomms.co.uk](https://adaptivecomms.co.uk)



**AdaptiveComms**  
Phones | IT | Cyber | Data Networks | WiFi

# How to Test Your Broadband

## Testing Methods

### Timing

- Test at various times of the day to understand how usage patterns affect speeds. Peak times might show slower speeds due to higher demand.

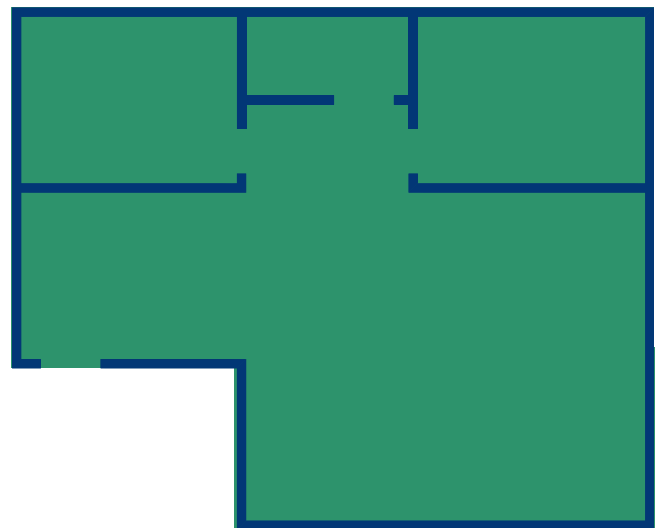


### Locations

Test in different areas within the care home to ensure coverage and performance are adequate throughout.

### Key locations include:

- Manager's Office
- Admin Offices
- Service User Rooms
- Communal Rooms
- Dining Rooms
- Kitchen
- Corridors



01704 540547



[info@adaptivecomms.co.uk](mailto:info@adaptivecomms.co.uk)



[adaptivecomms.co.uk](https://adaptivecomms.co.uk)



**AdaptiveComms**  
Phones | IT | Cyber | Data Networks | WiFi

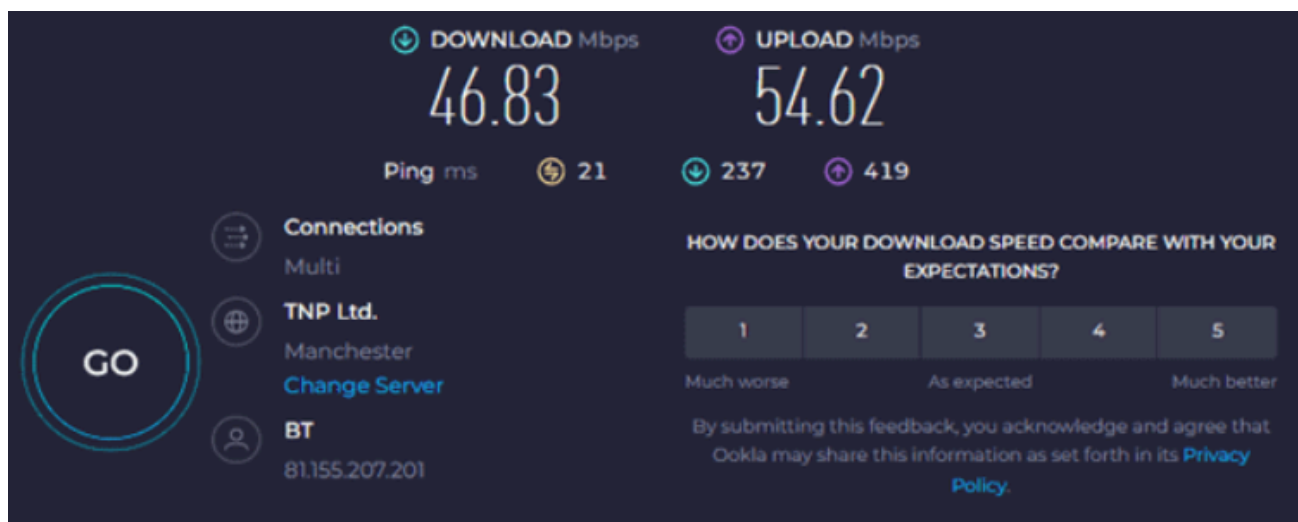


# Step-by-Step Testing Guide

We recommend using a hard wired device to test your internet connection, for example a computer directly connected to the router via an ethernet cable. You can also test the Wi-Fi connection through laptops, mobile phones, tablets etc.

You can test your Wi-Fi by using [www.speedtest.net](http://www.speedtest.net) and follow the steps.

- Click or select 'Go' that appears in the centre of the page. This will begin your upload and download speed.
- Under the 'Go' button you will see the name of your current provider as well as your server location.
- Once the test is complete, your result will be shown.



We recommend a bare minimum of **25Mbps** download speed. We recommend larger care providers seek out more information from an IT managed service provider (MSP) to find the best option possible.



01704 540547



[info@adaptivecomms.co.uk](mailto:info@adaptivecomms.co.uk)



[adaptivecomms.co.uk](http://adaptivecomms.co.uk)



**AdaptiveComms**  
Phones | IT | Cyber | Data Networks | WiFi



## Steps to Upgrade

If your broadband falls under the recommended levels, it's time to consider upgrading.

Instead of facing frequent disruptions, poor Wi-Fi coverage and struggling to meet the demands of patients and staff, you can trust AdaptiveComms to enhance your connectivity.

## The Solution: AdaptiveComms

As a company who has provided Wi-Fi & Cabling, Telecommunications, IT & ongoing support and more to multiple care homes across the North West, we are the experts.

Whether you're looking to upgrade your current care home, in need of help from planning to installation to distribution, our team are here to provide the best possible technological solutions so you can provide the best possible care for your residents.



01704 540547



[info@adaptivecomms.co.uk](mailto:info@adaptivecomms.co.uk)



[adaptivecomms.co.uk](https://adaptivecomms.co.uk)



**AdaptiveComms**  
Phones | IT | Cyber | Data Networks | WiFi