



WHITEPAPER

HOW TO IMPROVE YOUR CARE HOME WIFI

MODERN WI-FI FOR THE MODERN CARE
HOME



AdaptiveComms

Phones | IT | Cyber | Data Networks | WiFi

The Modern Care Home

Care homes rely on broadband and Wi-Fi for critical operations, including resident care, communication, and administrative tasks. However, many care homes face challenges related to inadequate internet infrastructure, which can hinder efficiency and affect resident well-being.

We're here to address these challenges and provide actionable strategies for improving broadband and Wi-Fi connectivity in care homes.



01704 540547



info@adaptivecomms.co.uk



adaptivecomms.co.uk



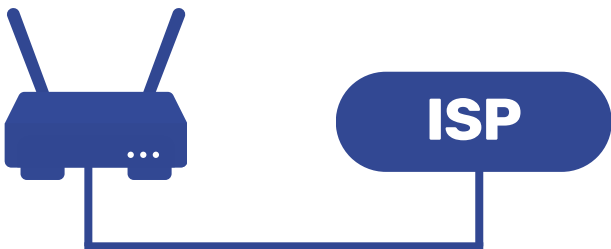
AdaptiveComms
Phones | IT | Cyber | Data Networks | WiFi

Understanding Broadband and WiFi

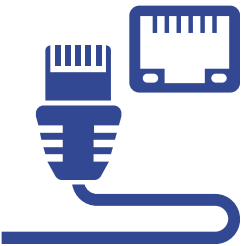
“My broadband doesn’t work!”

You may have uttered this sentence in frustration like many others when trying to load a webpage, access your emails or open your social media apps. But the broadband may not be the problem. It’s important to understand what the protentional, easier problems could be that you can fix by yourself before seeking help from the professionals.

Broadband



A broadband connection carries packets of data between an ISP and the end user’s router.



Broadband often refers to an always on high speed internet connection.

Broadband uses a wide range of frequencies to transmit data quickly and in large volumes.

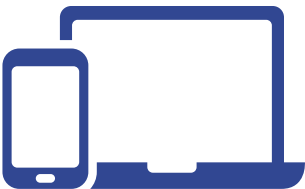


WiFi



Wi-Fi (Wireless Fidelity) refers to the radio link between your device and a wired router.

Additionally, it’s the common term for 802.11 - the wireless networking standards behind the development of this technology.



Wi-Fi allows internet-capable devices to connect to a router without cables.



01704 540547



info@adaptivecomms.co.uk



adaptivecomms.co.uk

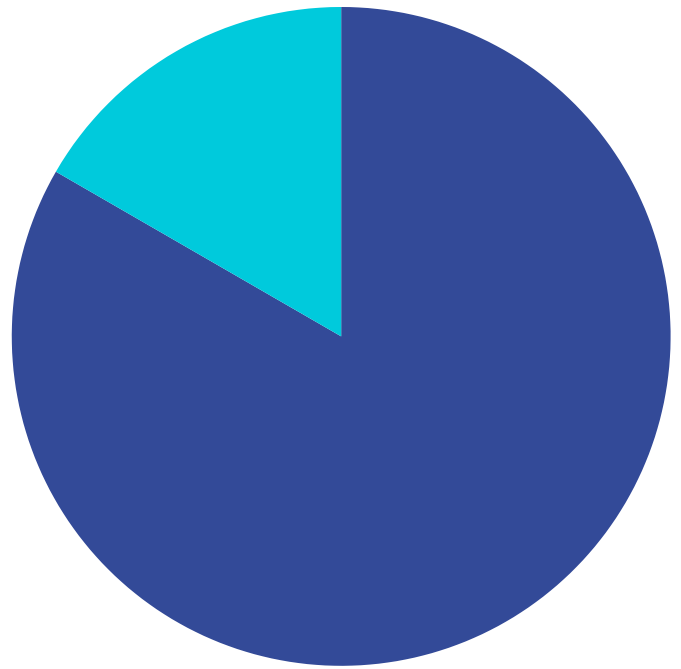


AdaptiveComms
Phones | IT | Cyber | Data Networks | WiFi

Addressing the Issue

To address this issue, it is essential for care homes to prioritise improving their connectivity services. By providing free and reliable Wi-Fi, care homes can enhance the quality of life for their residents and create a more supportive and engaging environment.

Additionally, improved connectivity can also streamline communication among staff members, leading to more efficient care delivery.



Only 1 in 5 care homes are able to offer their residents and guests free Wi-Fi



But are these issues as obvious as they sound?

While some may be very common issues that many of us have dealt with in our lives when it comes to broadband, some are very specific to care homes and far less obvious.

This means both care home managers, staff and engineers may not know the issue. Here is where we can shed a light on the common issues care home face when looking to upgrade their broadband.



01704 540547



info@adaptivecomms.co.uk



adaptivecomms.co.uk



AdaptiveComms
Phones | IT | Cyber | Data Networks | WiFi

Distance from The Router



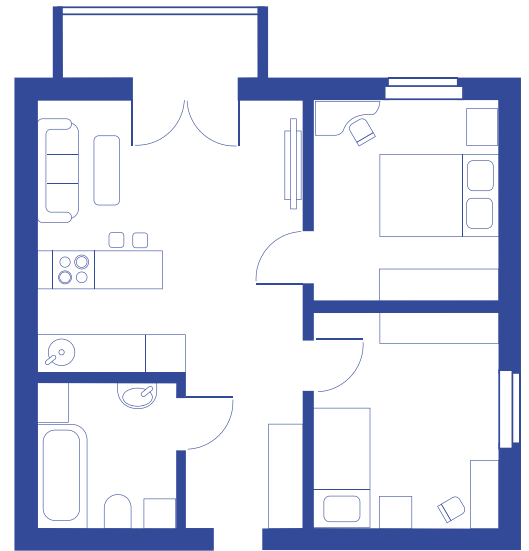
Say you are playing music from a speaker which is placed in the living room. If you are in the kitchen, bedroom or attic, you will have different levels of hearing (or sometimes none at all) for the music. The same applies to Wi-Fi.

Wi-Fi travels in waves; the further away you and your device is from the router, the weaker the Wi-Fi signal will be.

Physical Blocks - Walls

For the various care homes we have provided Wi-Fi for, one of the biggest issues was right at the beginning; the building planning. Wi-Fi is often an after thought, if a thought at all! Because of this and the size of care home, physical blocks like walls makes it difficult for the Wi-Fi waves to get through.

This results in redirection, weakened or dead spots. And the thicker the walls, the worse the Wi-Fi signal.



Power of Signal from Wi-Fi Device

Returning to the speaker analogy, remember that the farther you are from a speaker, the quieter it will be. But you can always adjust the volume.

Just like speakers, Wi-Fi & broadband vary in their signal strength and can be tailored to suit your care home's requirements.



01704 540547



info@adaptivecomms.co.uk



adaptivecomms.co.uk



AdaptiveComms
Phones | IT | Cyber | Data Networks | WiFi



Moving Forward

As we move forward, it is important for care homes to recognise the significance of connectivity and work towards creating a more connected and compassionate community for both residents and staff.

By embracing technology and investing in reliable Wi-Fi infrastructure, care homes can truly make a positive difference in the lives of those they serve.

The Solution: AdaptiveComms

As a company who has provided Wi-Fi & Cabling, Telecommunications, IT & ongoing support and more to multiple care homes across the North West, we are the experts.

Whether you're looking to upgrade your current care home, in need of help from planning to installation to distribution, our team are here to provide the best possible technological solutions so you can provide the best possible care for your residents.



01704 540547



info@adaptivecomms.co.uk



adaptivecomms.co.uk



AdaptiveComms
Phones | IT | Cyber | Data Networks | WiFi