

Which is Right for Your Business?



ChatGPT



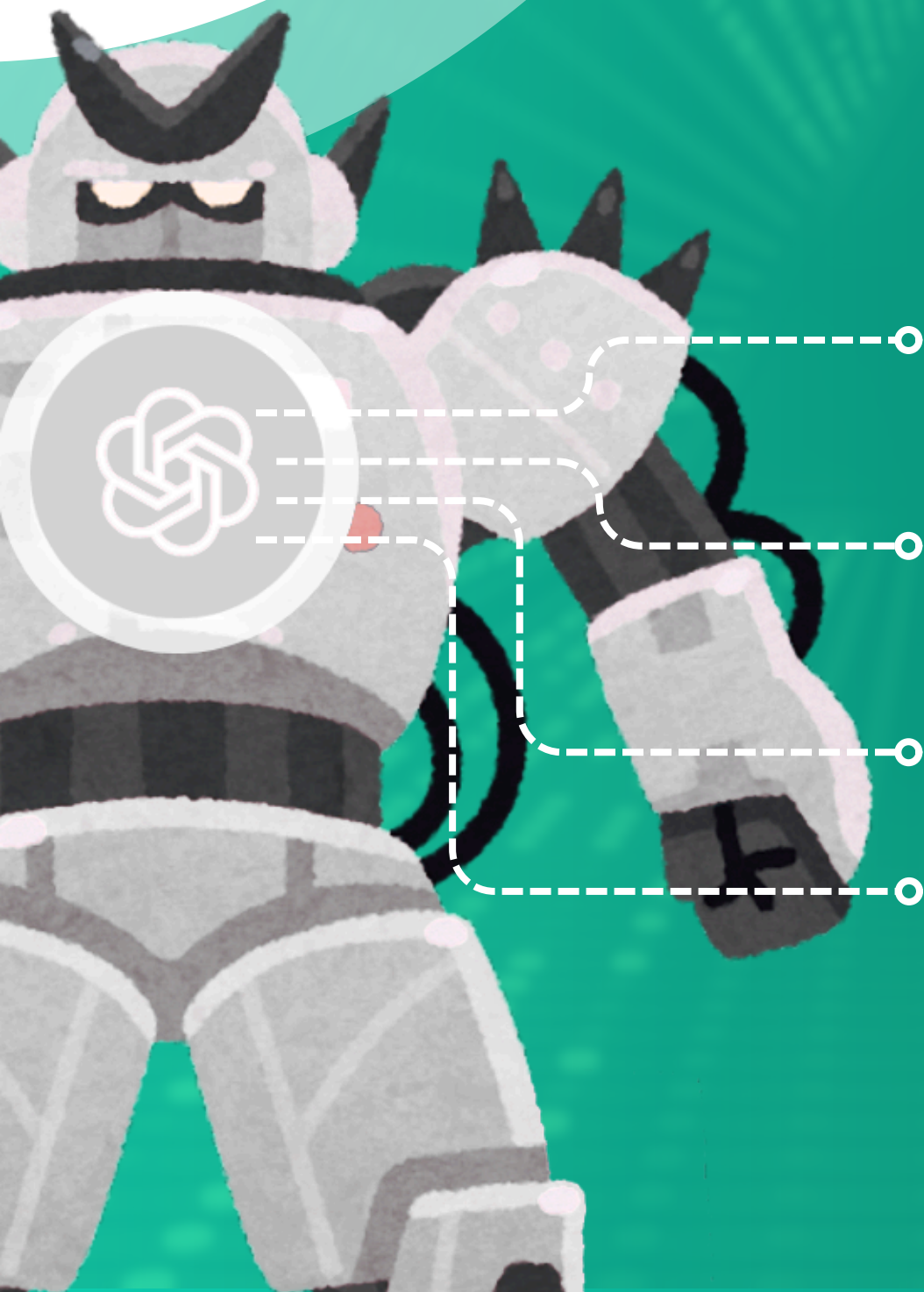
VS



Microsoft
Copilot



Chat GPT



- Multilingual AI excels in **human-like text generation** across diverse contexts.

- No **native** business tool integration, as integration is done with **plugins/APIs**.

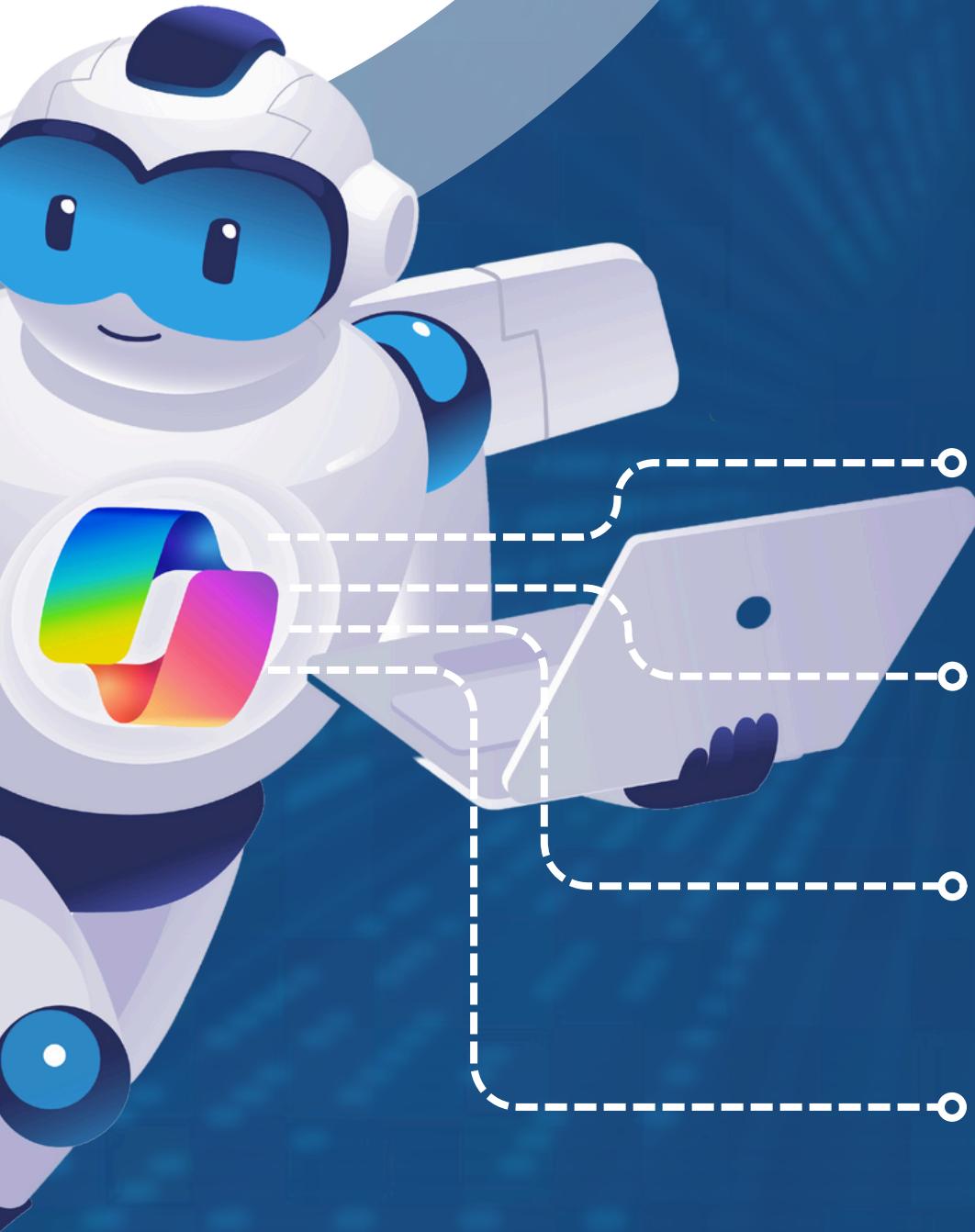
- General AI with **more limited customisation** to personal or business contexts.

- Unable to access or analyse **real-time company data**.



AdaptiveComms

Phones | IT | Cyber | Data Networks | WiFi



Microsoft Copilot

- Tightly integrated with **Microsoft 365**, enhancing familiar productivity tools.
- Personalises support by **leveraging organisational data** from Microsoft Graph.
- Facilitates **real-time collaboration and edits** across Microsoft 365 apps.
- **Subscription required**, adding costs for advanced features.



AdaptiveComms

Phones | IT | Cyber | Data Networks | WiFi

Upgrade Your Workflow

with **Copilot**



Choosing the right AI tool **can transform your business operations.** While ChatGPT offers broad AI capabilities, Microsoft Copilot provides **targeted enhancements** within the Microsoft ecosystem, making it the superior choice for businesses seeking **seamless integration** and **personalised productivity boosts!**