

# Portable furnace thermal imaging system

## Thermal imaging solutions

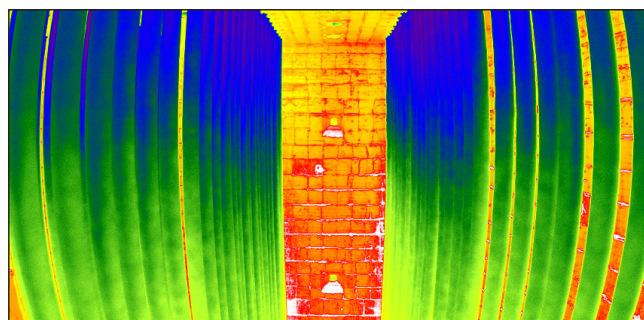
The Portable Furnace Thermal Imaging System is an accessory kit designed for use with the LAND NIR and MWIR borescope thermal imagers. It can be used for tube wall metal temperatures measurements, regular furnace inspections and surveys.

The LAND portable furnace imaging systems are easy to use, which makes them ideal for measurements and surveys inside furnaces.

To optimise the operation of furnaces the temperature within the furnace must be measured frequently and the temperature distribution monitored. In addition to using pyrometers to take point measurements, high resolution thermal imaging systems are also available as fixed installations or as portable units.

This portable system includes a battery power supply and air connection for the purging the imager whilst collecting short clips of the process. The advanced ImagePro thermal imaging software is installed on a Windows® tablet and enables extensive on-site real-time monitoring, analysis and recording of the thermal data.

**The Portable furnace thermal imaging system is an accessory for NIR and MWIR borescopes to support on-site monitoring and prolong furnace or tube lifetimes.**



## FEATURES & BENEFITS

- **Fully Portable System** makes it easy to handle and operate system for flexible on-site furnace measurements and surveys.
- **Advanced ImagePro Thermal Imaging Software** provides a full online view into the furnace during the measurements on-site and enables data capture for further analysis.
- **Multiple wavelengths and temperature ranges available** for different furnace applications and locations.
- **Protection & Safety** provided as two people can easily operate working at a safe distance, whilst the integrated heat shield protects the operator during furnace measurements.
- **Battery Powered System** allows measurements to be made without the requirement for mains power.

**See degrees differently.**

## SPECIFICATIONS

	Portable furnace thermal imaging system
<b>Key Components:</b>	Air-purged mounting tube Battery Pack Instrument Air Filter Unit Purging Air Hose (2 m / 79") Imager Power Cable (2 m / 79") Imager Ethernet Cable (5 m / 197") Windows® Tablet - IMAGEPro pre-installed Pelican™ Case
<b>Available Models (Imager Combinations):</b>	NIR-B-640-600/2000C-90/2 NIR-B-640-600/2000C-44/2 NIR-B-2K-600/1000C-95/2 NIR-B-2K-750/1250C-95/2 NIR-B-2K-800 /1400 -95/2 MWIR-B-640-300/1200C-90/2 - LF MWIR-B-640-300/1200C-90/2 - HF MWIR-B-640-500/1800C-90/2 - LF MWIR-B-640-500/1800C-90/2 - HF
<b>Pelican Case Dimensions (WxDxH):</b>	1186 x 492 x 222 mm / 47.7 x 19.3 x 8.7 "
<b>Imager &amp; Shield Dimensions:</b>	954 x 400 x 250 mm / 37.6 x 15.7 x 9.8 " (camera and shield assembly )
<b>Probe Length:</b>	2 ft / 640 mm
<b>Tablet Dimensions:</b>	314 x 207 x 24.5 mm / 12.4 x 8.1 x 1"
<b>Instrument Air Connection:</b>	1/2" BSP female or 1/2" NPT female
<b>Instrument Air Specifications:</b>	Max. air temperature at inlet 40 °C / 104 °F 400 l/min at 1200 °C / 2192 °F process. temperature This equipment is not designed for permanent installation. Insertion time will depend on site conditions.
<b>Max. Recommended Process Temperature:</b>	1200 °C / 2372 °F
<b>Max. Probe Tip Temperature:</b>	85 °C / 185 °F - NIR-B 60 °C / 140 °F - MWIR-B
<b>Battery Capacity:</b>	One 97 Wh power bank to power the instrument
<b>Battery Life:</b>	Max. 11 hours (Imager power only)
<b>Ambient Temperature:</b>	0 to 60 °C / 32 to 140 °F

## CONTACT US

WEB: [www.ametek-land.com](http://www.ametek-land.com)EMAIL: [land.enquiry@ametek.com](mailto:land.enquiry@ametek.com)We are fully committed to Quality Assurance. See all our accreditations at [AMETEK-LAND.COM/QUALITY](http://AMETEK-LAND.COM/QUALITY)