

## Guide to Areas Requiring Emergency Lighting

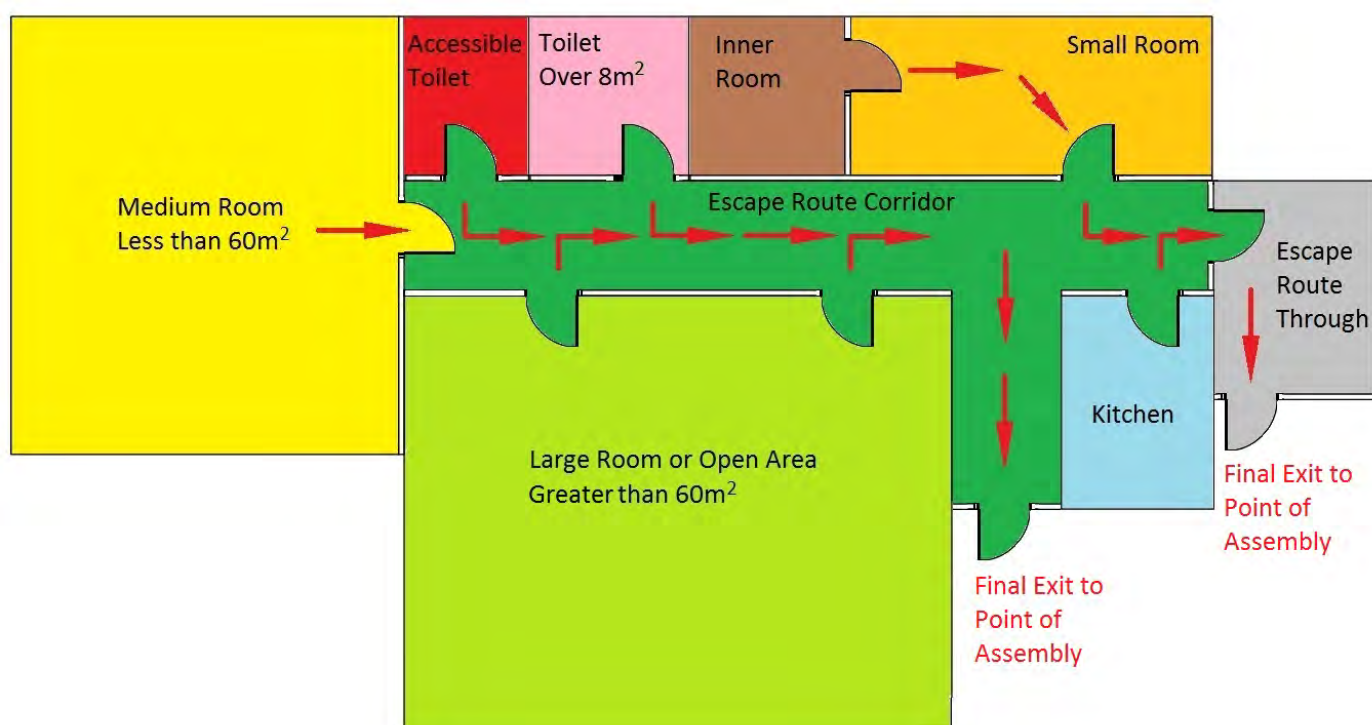
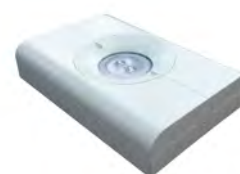


It is not always immediately clear whether emergency lighting is required in areas within premises or not. The decision on whether it should be installed must always be subject to an assessment of the risk of people being in the areas at a time when an emergency occurs and require emergency lighting to assist their escape to an illuminated escape route or directly to an exit from the premises.

This guide is intended to clarify where emergency lighting is a requirement, based on representative room dimensions and type, in accordance with the recommendations of BS 5266-1:2016.

The siting of emergency lighting luminaires and fire safety signs should be in accordance with BS EN 1838 requirements, which are further explained in BS 5266-1:2016.

Emergency lighting luminaires must be located at all points of emphasis as detailed in another of P4's guidance documents which can be found on the resources page of our website <https://p4fastel.co.uk/resources/pointsofemphasis2016update/>. These luminaires must achieve at least the minimum illuminance values specified within the standards.



Area	Emergency Lighting Required	Details of Requirement
Escape Route Corridor	YES	Must have a minimum illuminance of 1 Lux along the centre line. The maximum diversity ratio between the maximum and minimum illuminance is 40:1. Emergency lighting luminaires are also required at changes of direction, final exits and outside of the building to a place of safety.
Large Room or Open Area More than 60m <sup>2</sup> Floor Area	YES	Must have a minimum illuminance of 0.5 Lux with a maximum diversity ratio of 40:1. A 0.5m border around the perimeter of the open area can be ignored.
Medium Room Less than 60m <sup>2</sup> Floor Area	NO	Emergency lighting is not required unless a risk assessment determines otherwise. A risk assessment should be carried out to ensure no risks are present which indicate a requirement.
Small Room with Escape Route Through	YES	The small room forms part of the escape route and therefore requires emergency lighting to provide a minimum illuminance of 0.5 Lux throughout the room except for a 0.5m border around the perimeter.
Small Room with an Inner Room	YES	The small room forms part of the escape route from the inner room and therefore requires emergency lighting to provide a minimum illuminance of 0.5 Lux throughout the room except for a 0.5m border around the perimeter.
Inner Room with No Risk Identified	NO	Emergency lighting is not required. A risk assessment should be carried out to ensure no risks are present which indicate a requirement.
Kitchen identified in a Risk Assessment	YES	A kitchen identified in a risk assessment as being a high-risk task area or having specific risks must have emergency lighting. The work surface should be illuminated to a minimum of 15 Lux.
Accessible Toilet	YES	All accessible toilets must have emergency lighting of a minimum illumination of 0.5 Lux.
Toilet More than 8m <sup>2</sup>	YES	All toilets larger than 8m <sup>2</sup> must have emergency lighting of a minimum illumination of 0.5 Lux.
Multiple Toilets Without Borrowed Light	YES	Toilets with more than one cubicle, which do not receive any borrowed light, must have emergency lighting of a minimum illuminance of 0.5 Lux.
Toilets Less than 8m <sup>2</sup> With Borrowed Light	NO	Individual toilets which receive borrowed light and are less than 8m <sup>2</sup> floor area do not require emergency lighting. A risk assessment must take into account when the toilet may be occupied and whether the borrowed light is always available e.g. street lighting switch off times.

