

# Genesis

## EVOLUTION

# SYSTEM

ENVIRONMENTALLY FRIENDLY  
LIMESCALE TREATMENT

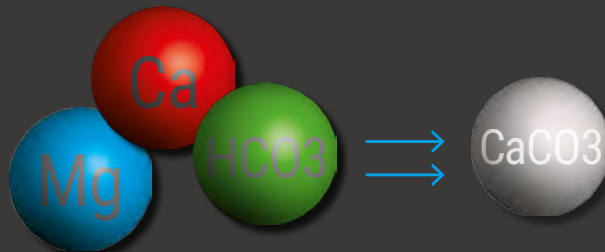


COMPREHENSIVE WATER

# PROBLEMS

## WITH LIMESCALE

Water contains a number of different elements, such as calcium, magnesium, bicarbonates and iron, among others. Elements which, on their own, are beneficial and necessary for the proper functioning of the human body. However, when these elements are subjected to high temperatures or pressure, they combine when they come into contact with carbonic acid, which works like a natural adhesive, forming LIMESCALE.



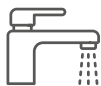
### PIPES

Over time and with continued use, the limescale contained in water is gradually deposited inside drainage pipes and other parts of the plumbing system. This causes a progressive narrowing that reduces water flow and ends up causing blockages and increasing energy consumption.



### KITCHEN

The harder the water, the longer food takes to cook, causing energy bills to rise and nutrients to be lost. Plus, in dishes such as broths, stews and soups, hard water has a negative impact on the flavour. This phenomenon is even more noticeable in ice cubes.



### TAPS

Keeping household taps and shower screens free of limescale deposits with the use of chemical products is, in addition to being a considerable expense, a major environmental hazard. Additionally, bacteria are able to proliferate, as the limescale prevents the water from reaching a sufficiently high temperature to act as a biocide.



### DOMESTIC APPLIANCES

Limescale tends to accumulate in hot water pipes connected to domestic appliances. Over time and with use, this limescale causes serious breakdowns in washing machines and dishwashers, particularly in the electrical components and the pumps that regulate water flow. This can result in up to 60% more energy consumption.



### HEALTH BENEFITS

Dermatologists always remind us that hard water is closely linked to certain skin conditions. If a person has delicate skin, hard water will increase the chances of skin damage and pain from the irritations and wounds caused by constant itching.



### PLANTS AND GARDENS

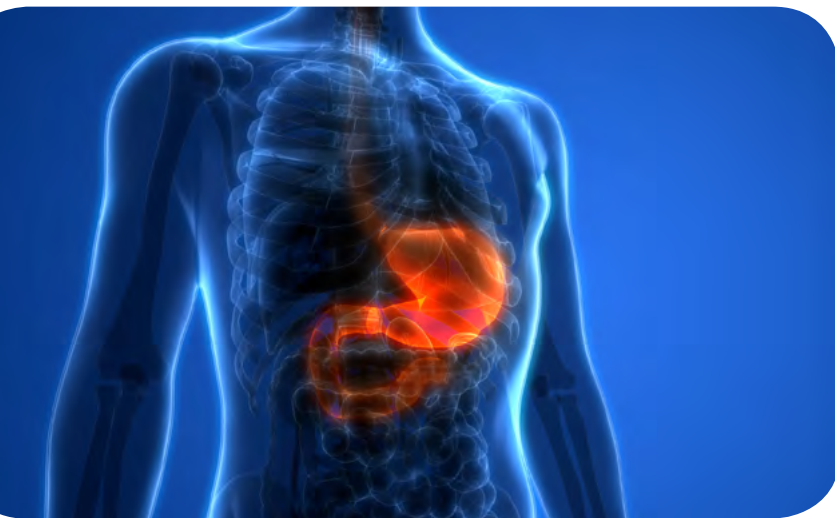
If we habitually water our plants with hard water, over time the soil will become alkaline. Watering plants with hard water will deprive them of the nutrients they need, thereby causing them to wilt and their leaves to turn yellow.





# SALT WATER-SOFTENERS

Salt water-softeners cause excessive consumption of water and release a large amount of sodium, which has an extremely negative effect on health and the environment. For this reason, over the last decade numerous countries have prohibited or limited their use, and these restrictions will likely be extended to the rest of the developed countries in the near future.



## UNDRINKABLE WATER

Salt water-softeners modify the chemical composition of the water, as a result of which the sodium levels can exceed the amount permitted by European and Spanish regulations (200 mg/litre). Consequently, the water is neither drinkable nor suitable for human consumption. They also eliminate all the minerals from the water, including calcium and magnesium, which the human body needs to function properly. The lack of these minerals can cause a variety of health imbalances.

A PROBLEM FOR  
THE ENVIRONMENT,  
FOR HEALTH  
AND FOR YOUR  
FINANCES.



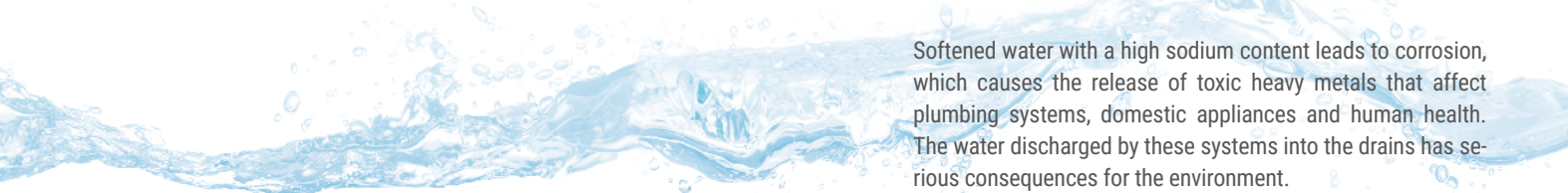
## OVERCONSUMPTION AND EXCESS COST

Salt water-softeners require regeneration between 4 and 7 times a month, during which time they can waste up to 2,000 litres of water. This, combined with their continuous salt consumption, leads to very high water bills and excessive maintenance costs.



## CORROSION AND CONTAMINATION

Softened water with a high sodium content leads to corrosion, which causes the release of toxic heavy metals that affect plumbing systems, domestic appliances and human health. The water discharged by these systems into the drains has serious consequences for the environment.

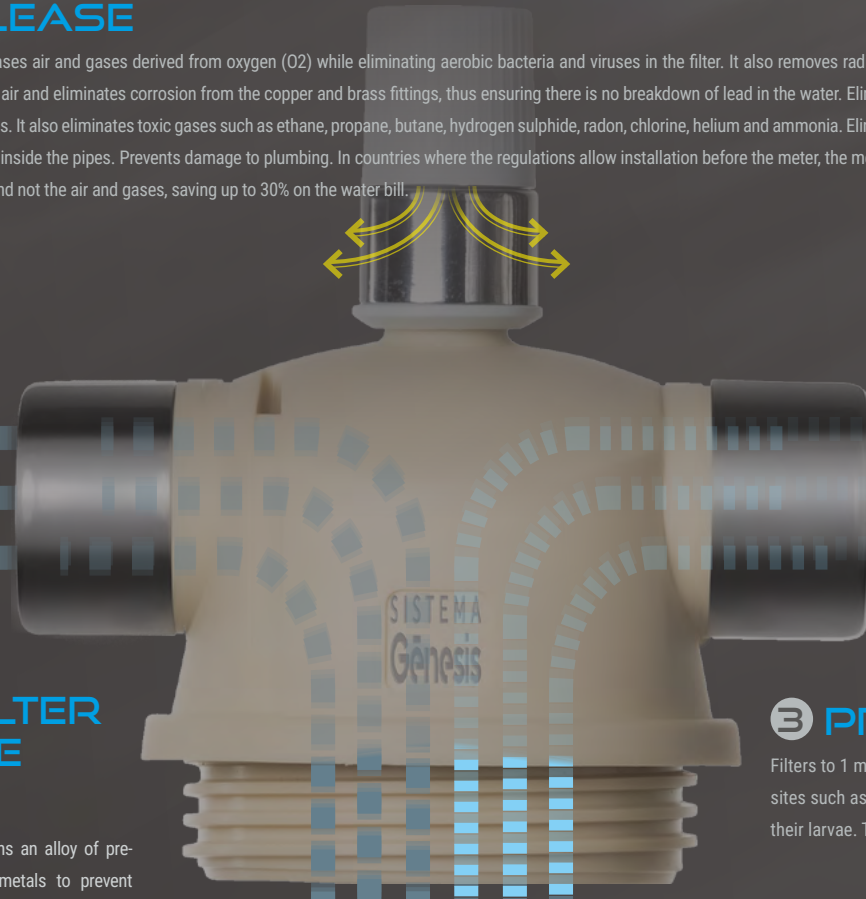
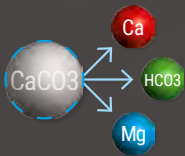


# Gēnesis EVOLUTION SYSTEM

The environmentally friendly, salt-free solution that eliminates limescale problems without chemically altering the composition of the water, respecting its mineralisation.

## 1 AIR RELEASE

(Unique patent worldwide) Releases air and gases derived from oxygen (O<sub>2</sub>) while eliminating aerobic bacteria and viruses in the filter. It also removes radioactive gases that are suspended in the air and eliminates corrosion from the copper and brass fittings, thus ensuring there is no breakdown of lead in the water. Eliminates CO<sub>3</sub> by getting rid of incrustations. It also eliminates toxic gases such as ethane, propane, butane, hydrogen sulphide, radon, chlorine, helium and ammonia. Eliminates bad smells. Detects water leaks inside the pipes. Prevents damage to plumbing. In countries where the regulations allow installation before the meter, the meter will only count the incoming water and not the air and gases, saving up to 30% on the water bill.



## 2 MULTI-FILTER CARTRIDGE

### TIL ROD:

(Unique patent worldwide) Contains an alloy of precious (gold) and semi-precious metals to prevent bacteria and heavy metals from building up. It also absorbs H<sub>2</sub>CO<sub>3</sub> (carbonic acid) by dispersing the minerals that create a build-up of limescale, thereby eliminating limescale problems and conserving the water's natural mineralisation.

### WATER BEADS:

Reduce mineral deposits on surfaces and prevent water turbidity.

### CERAMIC BALLS:

Registered under a (unique patent worldwide) and capable of absorbing chemicals, medicines, fungi-cides, hormones, arsenic and metals.

### MAGNESIUM (OPTIONAL):

Magnesium ions (Mg+2) to help improve heart health and prevent nerve disorders.

### ANTI-RADIOACTIVE (OPTIONAL):

(Unique patent worldwide) Lowers the level of hazardous radioactive materials such as uranium (U) and thorium (TH).



## 3 PF FILTER

Filters to 1 micron in order to prevent intestinal parasites such as Giardia and Cryptosporidium, as well as their larvae. Traps microplastics and brown water.

## 4 SILICONE MESH

(Optional) - Made of surgical silicone, this mesh prevents the growth of organic matter as well as the uncontrolled growth of bacteria and incubation at high temperatures, which can cause Legionella to proliferate.

## 5 METAL-FREE

Filtration phase that uses opposing neodymium magnets to generate a constant and symmetrical magnetic field that removes metals.

## 6 AUTO-JET

Washing accessory that generates a centrifugal effect inside the filter during drainage, to facilitate self-cleaning.

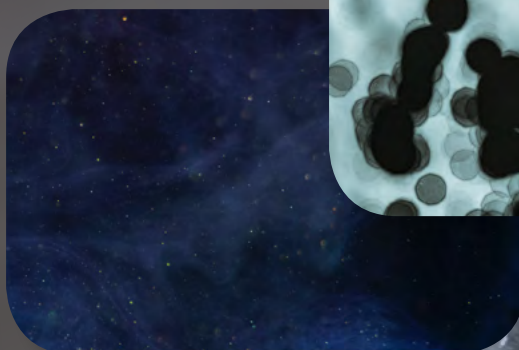
# BENEFITS

## GENESIS EVOLUTION SYSTEM

### HEALTH BENEFITS

Improves the taste and quality of the water without modifying the pH and preventing its oxidation. Furthermore, it boasts a treatment system that is effective against arsenic, Legionella, Pseudomonas and aerobic bacteria. It also traps microplastics and reduces lead and copper, thereby protecting the health of the entire family.

- + **PRODUCES WATER SUITABLE FOR HUMAN CONSUMPTION WHILE MAINTAINING THE WATER'S PH AND IODINE LEVEL AND NATURAL MINERALISATION**
- + **ANTI-ARSENIC, LEGIONELLA AND PSEUDOMONAS TREATMENT.**
- + **TRAPS MICROPLASTICS AND PREVENTS THE BREAKDOWN OF LEAD AND COPPER.**
- + **REDUCES THE TASTE AND SMELL OF DISSOLVED CHLORINE IN THE WATER.**



### SUITABLE FOR PLANTS

Water that is treated using the Génesis system is perfectly suitable for watering plants and gardens. Unlike other systems on the market, the water does not become alkaline or lose its nutrients.

- + **SUITABLE FOR WATERING PLANTS, FLOWERS AND GARDENS.**

**“The Génesis Evolution system is the definitive treatment for water problems. It is the most energy-efficient, healthy, economical and environmentally friendly solution”.**

## ENVIRONMENTALLY FRIENDLY

The Génesis system is the most environmentally friendly hard-water treatment solution available. As it is not a salt-based system and does not use chemical products, it does not contaminate the public water network.

- + **ELIMINATES LIMESCALE PROBLEMS WITHOUT ADDING SALT.**
- + **REDUCES THE USE OF CHEMICAL PRODUCTS IN THE HOME.**



**DUE TO WATER SHORTAGES AND RESTRICTIONS ON CONSUMPTION, IT IS VITAL THAT WATER IS REUSED VIA TREATMENT PLANTS. THE PLANTS' INCREASED ENERGY CONSUMPTION IS DUE TO THE CHEMICAL PRODUCTS AND THE DIFFICULTY OF TREATING MONOVALENT ELEMENTS, SUCH AS THE SALT DUMPED BY SALT WATER-SOFTENERS.**



## FINANCIAL SAVINGS

Eliminates limescale and prevents breakdowns in plumbing systems and domestic appliances caused by hard water. Enables financial savings by reducing the consumption of energy and chemical products.



- + **LOW MAINTENANCE COSTS AND MINIMAL WATER WASTAGE.**
- + **ELIMINATES OLD INCRUSTATIONS, RESTORING PRESSURE AND FLOW.**
- + **EXTENDS THE USEFUL LIFE OF DOMESTIC APPLIANCES.**



**THE MONTHLY SAVINGS OFFERED BY THE GÉNESIS SYSTEM ARE CALCULATED BASED ON ELECTRICITY BILL SAVINGS, THE INCREASED USEFUL LIFE OF DOMESTIC APPLIANCES AND PIPES, AND THE SAVINGS ON CHEMICAL PRODUCTS.**

# Gēnesis EVOLUTION SYSTEM

## CERTIFICATIONS



Standards Council of Canada  
Conseil canadien des normes



compliance to  
**NSF/ANSI 42**  
Standard

compliance to  
**NSF/ANSI 61**  
Scale Control Standard

No lead Content  
**NSF/ANSI/CAN**  
372-2022

## ACKNOWLEDGEMENTS

### DE PLAZA

RENOWNED ACTOR WITH MORE THAN 25 YEARS OF EXPERIENCE.



★★★★★ 4,75/5

"It's environmentally friendly and backed by many health certifications".

### VALERIANO RODRIGUEZ

DIRECTOR OF THE GRAND PRIX MOTORCYCLE RACING ORGANISATION TEAM STYLOBIKE.



★★★★★ 4,89/5

"After seeing the benefits the system offered, I decided to install it".

### XAVIER SARDÀ

RENOWNED JOURNALIST AND RADIO AND TELEVISION PRESENTER.



★★★★★ 4,99/5

"I'd recommend it to everyone".

# L'ORÉAL

THE WORLD'S LARGEST COSMETIC COMPANY HAS PLACED ITS TRUST IN THE GÉNESIS SYSTEM.

# Genesis

**EVOLUTION**

# SYSTEM

ENVIRONMENTALLY FRIENDLY  
LIMESCALE TREATMENT