



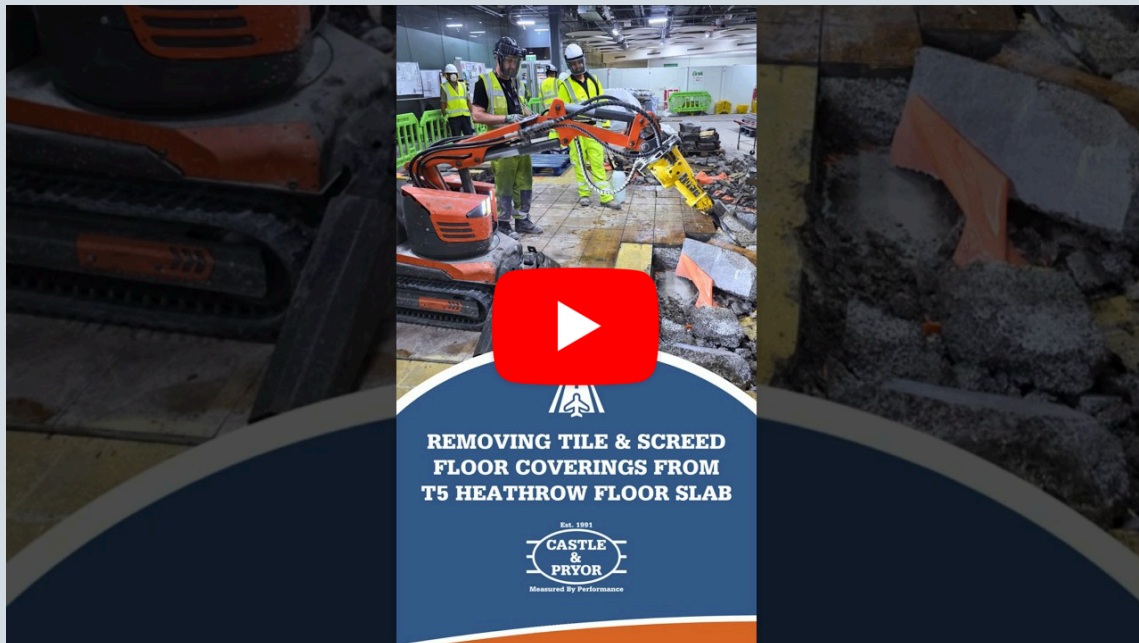
Measured By Performance



December 2025

MAIN STREAM CONSTRUCTION SERVICES

INFRASTRUCTURE/AVIATION SERVICES



Precision and Power in Action at Heathrow T5

Our team recently completed a challenging refurbishment prep using specialist equipment: Cutting through tiles and structural slab with our Golz 3-phase saw for clean, accurate results. Breaking out and removing tile and screed using the Husqvarna remote-controlled demolition robot, ensuring efficiency and safety inside the terminal.

This process cleared the way for a smooth refurbishment, demonstrating how we combine advanced technology with skilled execution to deliver on complex projects.

If you're a contractor looking for reliable partners for structural cutting and controlled demolition, let's connect!

Robotic Demolition Services

RECENT SOCIAL MEDIA POSTS

(Click to view more details)



Mark
Managing Director

Tora
Operations Planner

Femi
Senior Quantity Surveyor

Lorraine
Marketing

Manuela
Accounts Administrator

Elaine
Credit Controller

Christmas Jumper Day 2025

**FLYING INTO
2026**

HAPPY NEW YEAR!

FIND OUT MORE ABOUT US..

View Our Brochure

**MAINSTREAM
CONSTRUCTION
SERVICES**

View Here

View Here

- History
- Mission
- Vision
- Values

LEARN MORE »

**STAY UPDATED AND JOIN OUR
LINKEDIN COMMUNITY.**

JOIN NOW

GET A QUOTE

Est. 1991



Measured By Performance

Not already a subscriber? JOIN OUR NEWSLETTER

Unlock a World of Knowledge and Stay
Updated with Our Exclusive Content.



If you no longer wish to receive this newsletter,
click here to unsubscribe.

Castle and Pryor Ltd
Elles Hse, 4b Invincible Rd,
Farnborough, GU14 7QU

0800 163 382
info@castle-pryor.co.uk

CONFIDENTIALITY NOTICE: The contents of this e-mail and any attachments are confidential to the intended recipient. If you are not the intended recipient, please notify the sender and delete it. Be aware that emails are not secure and may contain viruses. Unless expressly stated, the content of the e-mail should not be understood to create any contractual commitments

