



“Sealing your needs with
Peace of mind since 1884”



ACME

- **A Global Presence company**
- **Our Origins date back to 1884**
- **We are one of the world's leading manufacturers of quality security seals**
- **Continuing to design, develop and manufacture innovative quality security seals**



Catering Trolleys



Shipping containers

Biodegradable Security Seals

Since 2020, **Acme Seals** has been at the forefront of sustainable manufacturing practices. They've taken a significant step by producing **all their Plastic Seals using biodegradable plastic**. Here are the key points:

- 1. Biodegradable Plastic:** Acme Seals' plastic seals are made with a special biodegradable additive from **BioSphere**. This additive enhances the plastic's environmental friendliness. When these seals end up in the environment, they attract over **600 microbes** that assist in digesting the plastic. These microbes thrive in both **anaerobic (landfill)** and **aerobic (composting)** environments¹.
- 2. Strength and Integrity:** The transition to biodegradable plastic doesn't compromise the seals' strength or integrity. They perform just as effectively as traditional plastic seals until they reach the right environment for biodegradation.
- 3. Recyclability:** Not only are these seals biodegradable, but they're also **100% recyclable**. This dual benefit ensures that Acme Seals' products contribute positively to our planet.
- 4. Compliance:** Acme Seals' biodegradable plastic complies with various standards, including:
 - **ISO 14021:2016:** Environmental labels and declarations.
 - **ASTM D5511:** Anaerobic biodegradation under high solids environments.
 - **ASTM D5526-12:** Anaerobic biodegradation under accelerated landfill conditions.
 - **ASTM D5338:** Aerobic biodegradation.
 - **EPA Method 8015:** Demonstrating complete breakdown.
 - **EU Directive 94/62/EC:** Packaging and Packaging Waste compliance.
- 5. A Better Solution:** Unlike most recycled plastics that still end up in landfills, Acme Seals' biodegradable plastic truly breaks down. It won't linger for hundreds of years like conventional plastics.



Pull – Tight Seals

Combilock Seal



The Acme Combilock Seal is a versatile pull-tight seal manufactured from polypropylene material.

Strap: 7mm

Sizes: 30cm, 35cm, 40cm BIO

X Seal



The Acme X Seal is a 2 piece smooth ribbon pull-tight seal manufactured from polypropylene material with a metal insert

Ribbon Diameter: 2mm

Sizes: 15cm, 20cm, 30cm BIO

HL Seal



The Acme HL Seal is a 2 piece smooth ribbon pull-tight seal manufactured from polypropylene material with a metal insert, available with or without a tear-off

Strap: 5.9mm

Sizes: 30cm, 40cm BIO

Rhino Seal



The Acme Rhino Seal is a 2 piece smooth ribbon pull-tight seal manufactured from polypropylene material with a metal insert, available with or without a tear-off

Strap: 4.35mm

Sizes: 30cm, 40cm BIO

Pull - Tight Seals

F Seal



The Acme F Seal is a versatile pull-tight seal manufactured from polypropylene material.

Ribbon Diameter: 2.6mm

Sizes: 23cm

BIO

Nylon Griptight Seal



The Acme Griptight Seal is a heavy-duty pull-tight seal manufactured from two dissimilar materials.

Ribbon Diameter: 3.9mm

Sizes: 28cm, 35cm

BIO

PP Griptight Seal



The Acme PP Griptight Seal is a pull-tight seal manufactured from two dissimilar materials with a tear-off

Ribbon Diameter: 3.9mm

Sizes: 37cm

BIO

Pull - Tight Seals

M Seal



The Acme M Seal is a versatile pull-tight seal manufactured from polypropylene material

Strap: 2.75mm

Sizes: 23cm, 29cm BIO

CS1 Metal Cable Seal



The Acme Cable Seal is manufactured in aluminium alloy and the cable is non preformed galvanized aircraft cable.

Cable Diameter: 1.5mm, 3.5mm, 5.0mm

Sizes: 25cm

H Seal



The Acme H Seal is a 2 piece smooth ribbon pull-tight seal manufactured from polypropylene material with a metal insert

Strap: 7mm

Sizes: 30cm, 35cm, 40cm BIO

Pull - Tight Seals

X1 Seal

The Acme X1 Seal is a 2 piece smooth ribbon pull-tight seal manufactured from polypropylene material with a metal insert

Ribbon Diameter: 2mm

Sizes: 20cm, 30cm

BIO

Luggage Seal

The Acme Luggage Seal is a 2 piece smooth ribbon pull-tight seal manufactured from polypropylene material with a metal insert

Ribbon Diameter: 2mm

Sizes: 20cm

BIO



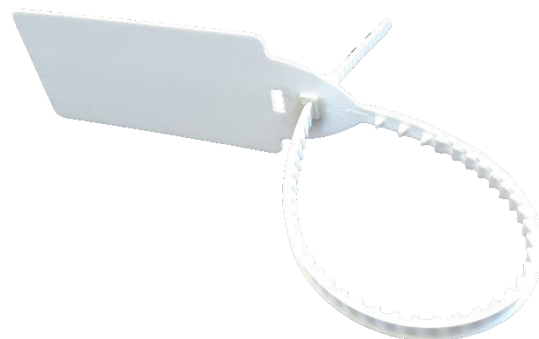
Big Tag Seal

The Acme H Seal is a 2 piece smooth ribbon pull-tight seal manufactured from polypropylene material with a metal insert

Strap: 7mm

Sizes: 30cm, 35cm, 40cm

BIO



Fixed Length Seals

SM2 Seal



The Acme Seal SM2 Seal is a fixed length seal manufactured from polypropylene material

Strap: 5mm

Sizes: 18cm, 29cm

BIO

Gen2 Bulldog Seal



The AcmeGen2 Bulldog Seal is a fixed length seal manufactured from two dissimilar materials.

Strap: 7.5mm

Sizes: 21cm

BIO

Bulltip Seal



The Acme Bulltip Seal is a fixed length seal manufactured from two dissimilar materials with a tell-tale indicator

Strap: 7.5mm

Sizes: 21cm

BIO

Fixed Length Seals

Bolt Seal



The Acme Bolt Seal is an ISO 17712:2013 compliant high security bolt seal for high value container cargo shipments

Pin Diameter: 7.9mm

Sizes: 8.5cm (when locked)

T Seal

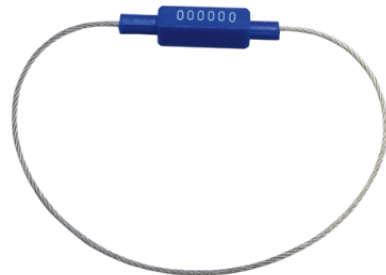


The Acme T Seal is a fixed length metal seal manufactured in tin plated steel

Strap: 10mm

Sizes: 10cm – 60cm

CS2 Metal Cable Seal



The Acme CS Seal is a Cable seal where the locking mechanism and attached cable is protected with high impact ABS plastic.

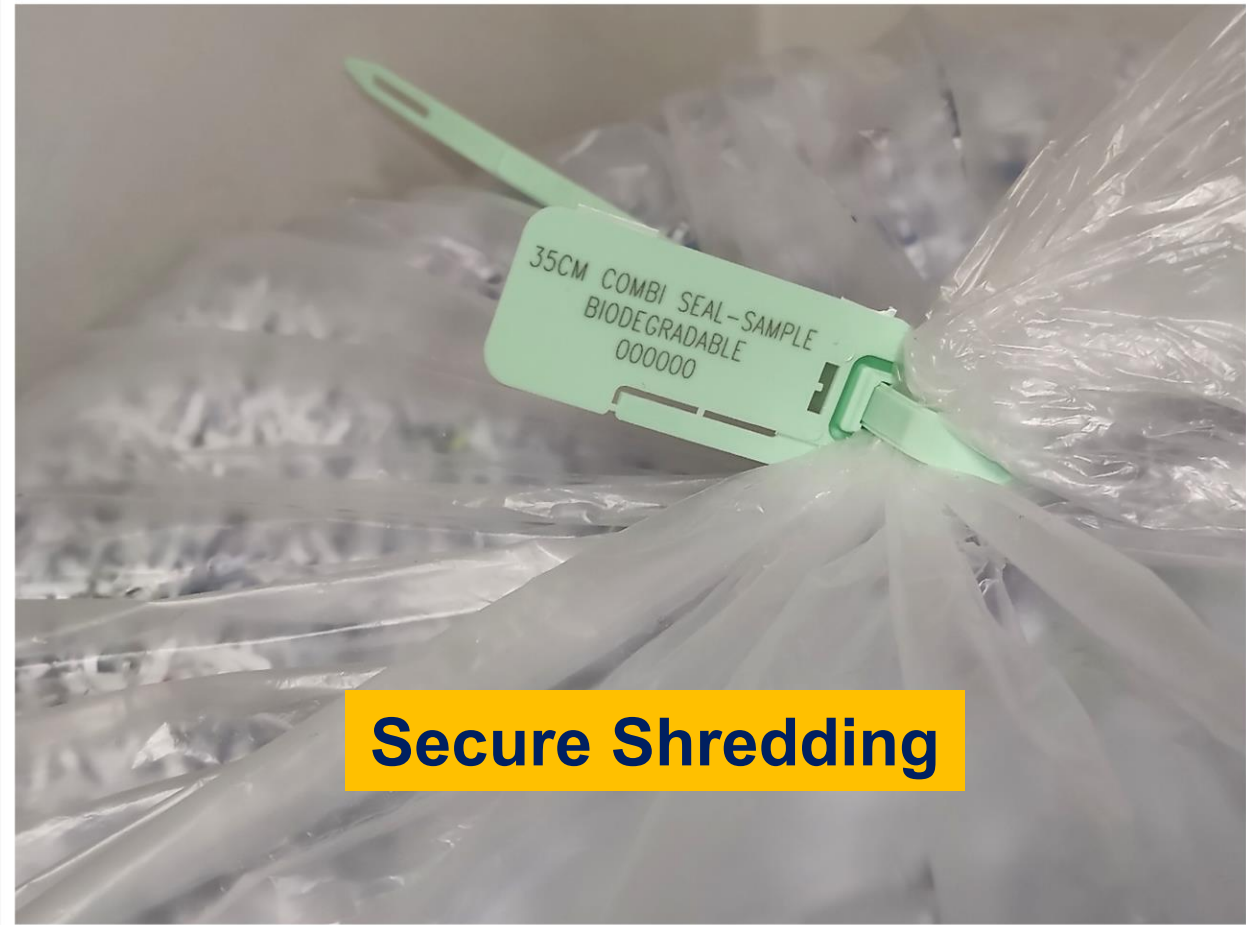
Cable Diameter: 1.8mm

Sizes: 30cm

Anti Wardrobing



Secure Shredding



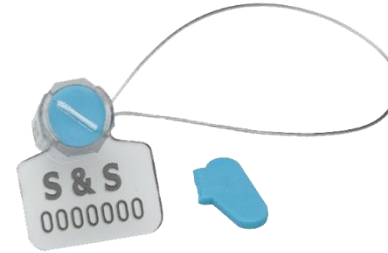
Other Products

PL2 Padlock Seal



The Acme PL2 is a Padlock seal manufactured from two materials, Styrene Acrylonitrile for the body and Stainless Steel for hook hasp. The cover is transparent so the user can see the seal is correctly locked and if any attempt is made to compromise the seal

Twister Seal



The AMD Twister Seal is a two-part Polycarbonate wire seal that offers an alternative to lead and plastic wire seals, but can be applied without the use of a sealing tool

Wire: -0.7mm diameter

Standard Length: 50cm

B Seal



The Acme B Seal is a special purpose pull tight seal manufactured from two dissimilar materials.

Operating Length: 22cm (overall 27cm)

Ribbon Diameter: 3.9mm

BIO

Other Products

Lead Seal - Round



The Round Lead Seal is designed with two parallel holes and a knot chamber

Recommended Applications include Gas, Water & Electric meters, Drums, Valves, Refineries, Post Bags, Cages & Lockers

YP10 Plastic Seal



The Acme YP10 Seal is manufactured from ABS food grade material and is suitable for applications where the traditional lead seals cannot be used.

Recommended Applications include Gas, Water & Electric meters, Drums, Trailers, Food Industry & Cages

Lead Seal – Cross Hole



The LS31F Cross-hole Lead Seal is designed so that the lashed wire is crimped together when the seal is compressed with the sealing tool.

Recommended Applications include Gas, Water & Electric meters, Drums, Valves, Airline Baggage Pods, Containers, Rail Freight Refineries, Post Bags, Cages & Lockers.

Crimp Seal



The Acme Crimp Seal is manufactured in high grade polypropylene material and is suitable for applications where the traditional lead seal cannot be used.

Recommended Applications include Gas, Water & Electric meters, Taxi Meters, Drums, Trailers & Cages

Other Products

Clip Seal



The Clip Seal is a metal locking seal manufactured from tin plate steel. It is closed by hand without the use of special tools and is suitable for use with sealing wire or cord.

Sealing Wire



The Acme Sealing Wire is available in galvanised steel, copper and stainless steel and can be supplied on plastic spools or in cut lengths.

Sealing Tool



The Acme Sealing Tools are manufactured from cast carbon steel and chrome plated for protection.

The tools are supplied with round dies, plain or corrugated for effective crimping of all Acme Lead Seals.

Copper Ferrules



Annealed copper, tin plated.

Available in 6mm or 12mm

Outer diameter of 4.2mm, with inner diameter of 1.8mm

Other Products

Cable Ties



Our range of Cable Ties are manufactured from high grade Nylon 6.6 giving strength and flexibility. Manufactured in lengths from 20mm up to 1030mm , they are suitable for many applications, servicing the electronics, heavy electrical and engineering industries

Tote Seals



Our range of Tote Seals are manufactured in Polypropylene and are suitable for all the most common Tote Boxes. They can be plain or numbered depending on your requirements. In our range we can support both round and elongated oval holes

Security Bags



Acme security bags are manufactured from light weight strong, multilayer coextruded film, which gives excellent durability, reliability, and resistance to humidity

Sizes: 25.5cm x 35.5cm



Other Products



NT& PT Label Seals

The Acme NT label is manufactured from a matt polyester face material together with an adhesive on the reverse side that is virtually Non-Transferred to any applied surface either indoor or outdoor

Recommended Applications include Coin Boxes, ATM Cartridges, Airlines doors & compartments, Motor vehicle doors & compartments, Food & Beverage containers, First Aid boxes, meters & valves, Metal, Plastic or Glass surfaced containers



The Acme PT label is manufactured from a matt polyester face material together with an adhesive on the reverse side that is Partially Transferred to any applied surface either indoor or outdoor. When the label is lifted it reveals a highly visible security message 'OPEN VOID' as evidence the label seal has been opened

Recommended Applications include Evidence bags & boxes, security envelopes, metal glass or plastic containers, packing cartons, coin bags, cash boxes, meters & valves, pallet stretch or shrink film, coated paper boxes, & plastic or poly bags

Electronic Locks



Digi-Lock

Digi-Lock Prevents internal theft and fraud along the entire supply chain as soon as the seal is closed, it automatically generates a unique number that can be transferred to the cargo documentation.

If the display shows the same number when the cargo arrives, you can be sure that the seal was not opened during the trip. If several stops are made on the journey, a new unique number is generated each time.

Watchdog-Lock

WATCHDOG-Lock Advanced electronic reusable security lock, to control position and status of trucks and containers, either from fixed station or from mobile devices (smart phone and tablet). Equipped with GPS and GSM/GPRS modules, it enables getting real time logistic information of identification together with the one of traceability.

Thanks to its advanced technical features, **WATCHDOG-Lock** allows you to enable features of:

MONITORING, thanks to its ability to communicate in real-time with IT systems for logistics and transport, it informs about the complete data on fleets and individual vehicles.

ANALYSIS of the data for the entire fleet relating to individual drivers, with the possibility of intervention and planning of activities.

CONTROL, through real-time access to data on vehicles and drivers, and to the position marked on the map by using GPS tracking.





How to contact us



ACME SEALS LIMITED

Unit 9 Rosewood Business Park

Eastways

Witham

Essex

CM8 3AA

Tel: 01376 521841

www.acmeseals.com

acme@acmeseals.co.uk



Call or Email for a quote today!