

Desktop Utility Search

Filwood Community Centre, Bristol.

Completed 7th September 2023.



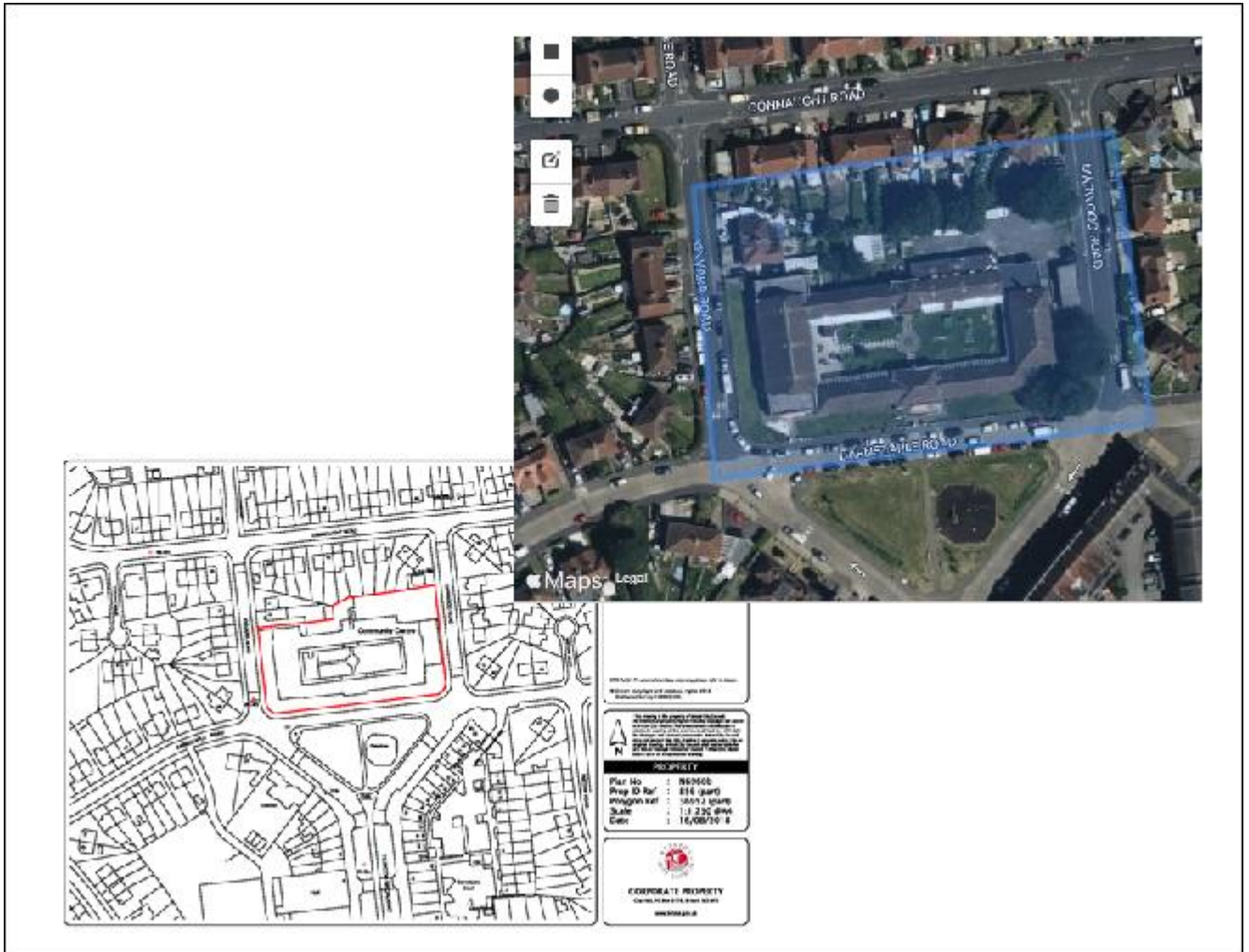
South West Surveys

28 Rudgeway Park, Rudgeway,
South Gloucestershire,
BS35 3RU

Contents Page

Location Map / Site Plan	Plans used to obtain Assets
Information Page	Report / Guarantee
Underground Utility Apparatus Page 1	Colour Coding of Apparatus
Underground Utility Apparatus Page 2	Colour Coding of Apparatus
Underground Utility Guidance	Report
BT	Plan
ELECTRIC	Company: National Grid Electricity Distribution
GAS	Company: Wales and West
WATER	Company: Bristol Water/ Wessex Water
CABLE TV	Company: Virgin Media
TELECOMS	Company: City Fibre Vodafone (Not Requested)
LSBUD	Ref: 30659000
GTC	Plan and Report
LSBUD Members	Affected Reports Obtained
Non LSBUD Members	Reports Obtained
Unexploded Bomb Threat Level	Map and Report
Environmental Agency Flood Report	Map and Report
Disclaimer	

Location Map / Site Plan



Grid Reference:

X (Easting)	Y (Northing)
359370	169811

Site Address:

Filwood Community Centre
Barnstaple Road
Bristol
BS4 1LQ

Report:

We have completed this report in accordance with the standards that are defined under Survey Category D of PAS128.

PAS128 is a Publicly Available Specification for Underground Utility Detection, verification and location published by the British Standards Institution.

It should be considered that positional accuracy of plant is not guaranteed from the information presented in a desktop search alone, the location of underground utilities should be verified through other means such as a full Underground Utility Survey prior to breaking ground and commencing work.

Where available we have included guidance documentation for Gas & Electric these should be referred to before work commences.

Relevant documents:

We recommend the following documents must be referred to before any work commences in the vicinity of existing services:

Health and Safety Booklet HS (GS) 6 Avoidance of Danger from Overhead Electric Lines

General Safety Measures to Avoid Injury and Damage to Gas Apparatus

HSE Guidance Note HS (G) 47 Avoiding Danger from Underground Services

National Joint Utilities Group (NJUG) Publications Vol.1

CDM Regulations 2007 (Regulation 34- Energy Distribution Installations)

Electricity at Work Regulations 1989

Guarantee:





We endeavour to contact all Utility Companies relevant for this desktop search however we cannot guarantee that all of the utility companies contacted will respond to our enquiries in the time period given.

If an essential part of the report returns after the document has been completed and sent, we will send this to the necessary person(s) as soon as it is physically possible.

Underground Utilities Apparatus

The following table is based on the current information from the National Joint Utilities Group Guidelines (2007) (<http://streetworks.org.uk/wp-content/uploads/2016/09/V1-Positioning-Colour-Coding-Issue-8.pdf>)

All depths are from the surface level to the crown of the apparatus

Utility	Duct	Pipe	Cable	Marker Systems	Recommended	
					FOOTWAY VERGE	CARRIGEWAY
ELECTRICITY HIGH VOLTAGE HV	BLACK OR RED DUCT /OR TILE	N/A	RED OR BLACK	Yellow with black and red legend or concrete tiles	450-1200mm	750 – 1200mm
ELECTRICITY LOW VOLTAGE LV	BLACK OR RED DUCT/ OR TILE	N/A	RED OR BLACK	Yellow with black legend.	450mm	600mm
GAS	YELLOW	See Information below	N/A	Black legend on PE pipes every linear metre.	600mm footway 750mm verge.	750mm
PE – up to 2 bar – Yellow or yellow with brown stripes. (removable skin revealing white or black core pipe) PE – between 2-7 bar – Orange. Steel pipes - May have yellow wrap or black tar coating or no coating. Ductile Iron - May have plastic wrapping. Asbestos and Pit / Spun Cast Iron – No distinguishable colour.						
WATER Non-potable & Grey Water 	N/A	BLACK WITH GREEN STRIPES	N/A	N/A	600-750mm	600-750mm
WATER Firefighting 	N/A	BLACK WITH RED STRIPES / BANDS	N/A	N/A	600-750mm	600-750mm
OIL / FUEL PIPELINES	N/A	BLACK	N/A	Various surface markers. Marker tape or tiles above red concrete.	900mm <i>All work within 3 metres of oil fuel pipelines must receive prior approval</i>	
SEWERAGE	BLACK	No distinguishing colour / material	N/A	N/A	Variable	Variable
COMMUNICATIONS (COMMS) 	Grey, white, green, black, purple	N/A	BLACK OR LIGHT GREY	Various	250 – 350mm	450 - 600mm
WATER	BLUE OR GREY	Blue polymer or blue or uncoated Iron / GRP Blue polymer with brown stripe (removable skin revealing white or black pipe)	N/A	BLUE OR BLUE / BLACK	750mm	750mm (minimum)
WATER PIPES FOR SPECIAL PURPOSES (contaminated Ground) 	N/A	Blue polymer with brown stripes (nonremovable skin)	N/A	BLUE OR BLUE / BLACK	750mm	750mm (Minimum)

***These guidelines describe utility industry practice; however, it should not be assumed that all apparatus will conform to the recommendations for positioning and colour coding in this report. ***

Underground Utility Apparatus

The following table is based on the current information from the National Joint Utilities Group Guidelines (2007) (<http://streetworks.org.uk/wp-content/uploads/2016/09/V1-Positioning-Colour-Coding-Issue-8.pdf>)

All depths are from the surface level to the crown of the apparatus.

Highway Authority Services

At the time of publication, the following were current examples of known highway authority apparatus colour coding but local variations may occur.

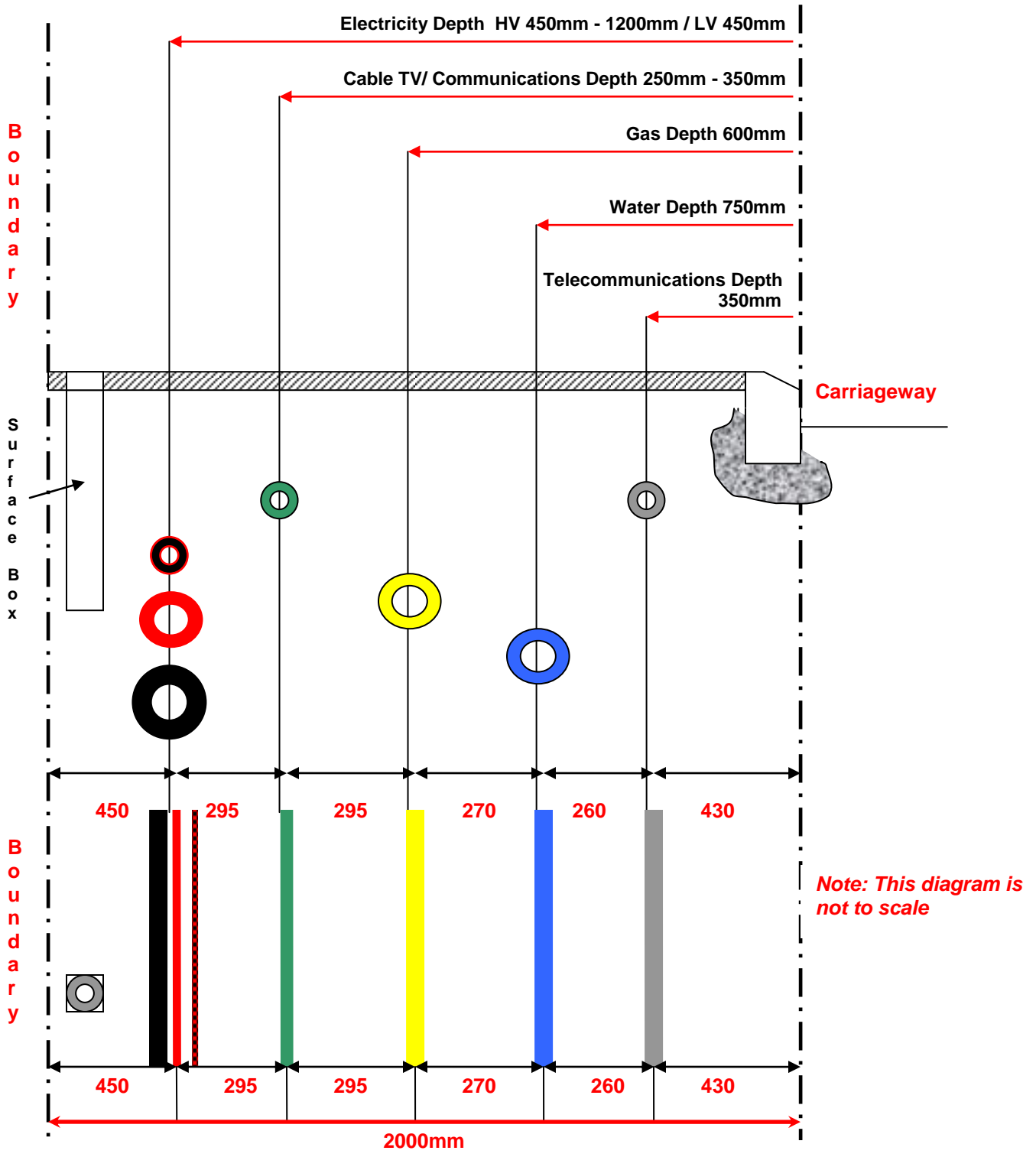
Utility	Duct	Pipe	Cable	Marker Systems	Recommended	Minimum Depths
					FOOTWAY VERGE	CARRIGEWAY
STREET LIGHTING						
England and Wales	ORANGE	N/A	BLACK	Yellow with black legend.	450mm	600mm
Scotland	PURPLE	N/A	PURPLE	Yellow with black legend.	450mm	450mm
Northern Ireland	ORANGE	N/A	BLACK OR ORANGE		450mm	450mm
OTHER						
Traffic Control	ORANGE	N/A	ORANGE	Yellow with black legend.		
Street Furniture		N/A	BLACK	Yellow with black legend.	450mm	600mm
Communications		N/A	LIGHT GREY OR BLACK	Yellow with black legend.		
CCTV	PURPLE	N/A		Yellow with black legend.		
MOTORWAYS & TRUNK ROADS ENGLAND & WALES						
COMMUNICATIONS	PURPLE	N/A	GREY	Yellow with black legend.	450mm	
COMMUNICATIONS POWER	PURPLE	N/A	BLACK	Yellow with black legend.		
ROAD LIGHTING	ORANGE	N/A	BLACK	Yellow with black legend.		
SCOTLAND						
COMMUNICATIONS	BLACK OR GREY	N/A	BLACK	Yellow with black legend.		
ROAD LIGHTING	PURPLE	N/A	PURPLE	Yellow with black legend.		

***These guidelines describe utility industry practice; however, it should not be assumed that all apparatus will conform to the recommendations for positioning and colour coding in this report. ***

The following table is based on the current information from the National Joint Utilities Group Guidelines (2007) (<http://streetworks.org.uk/wp-content/uploads/2016/09/V1-Positioning-Colour-Coding-Issue-8.pdf>)

Recommended Positioning of Utility Apparatus in a 2m Footway

Note – the same positioning should apply in the carriageway/service strip (if safe and practical to do so) where a development has no footway(s) available for services and/or the boundary of the property is on the carriageway (please refer to minimum depths in carriageways). For further advice please contact the asset owner.

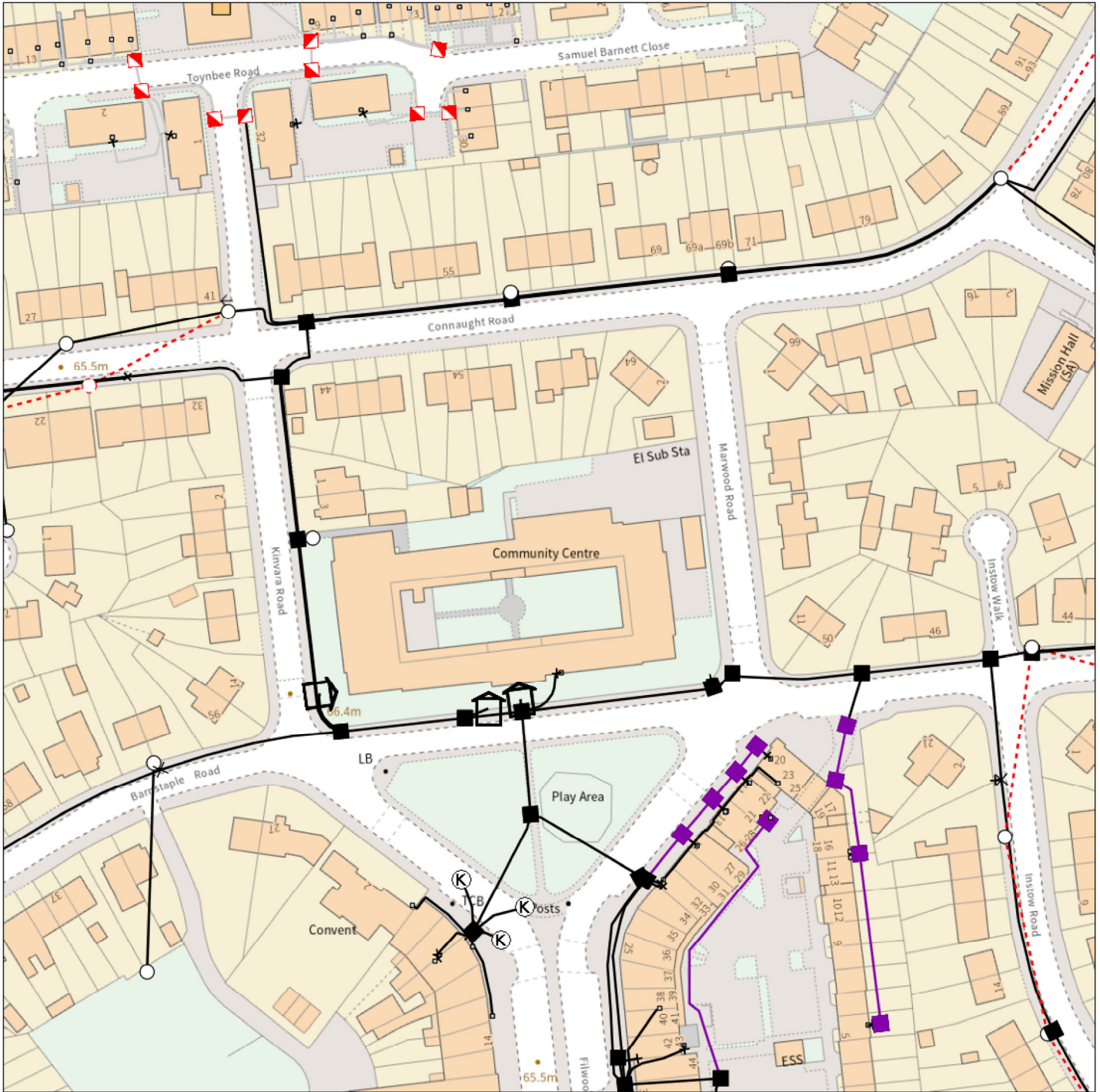


These guidelines describe the utility industry practice; however, it should not be assumed that all apparatus will conform to the recommendations for positioning and colour coding in this report.

BT



Maps by email Plant Information Reply



IMPORTANT WARNING

Information regarding the location of BT apparatus is given for your assistance and is intended for general guidance only. No guarantee is given of its accuracy. It should not be relied upon in the event of excavations or other works being made near to BT apparatus which may exist at various depths and may deviate from the marked route.



openreach

CLICK BEFORE YOU DIG

FOR PROFESSIONAL FREE ON SITE ASSISTANCE PRIOR TO COMMENCEMENT OF EXCAVATION WORKS INCLUDING LOCATE AND MARKING SERVICE

email cbyd@openreach.co.uk

ADVANCE NOTICE REQUIRED

(Office hours: Monday - Friday 08.00 to 17.00)

www.openreach.co.uk/cbyd

Accidents happen

If you do damage any Openreach equipment please let us know by calling 0800 023 2023 (opt 1 + opt 1) and we can get it fixed ASAP

KEY TO BT SYMBOLS

		Change Of State	+	Hatchings	
	<i>Planned</i>	Split Coupling	×	Built	
PCP		Duct Tee	▲	Planned	
Pole		Building		Inferred	
Box		Kiosk	Ⓚ	Duct	
Manhole		Other proposed plant is shown using dashed lines. BT Symbols not listed above may be disregarded. Existing BT Plant may not be recorded. Information valid at time of preparation. Maps are only valid for 90 days after the date of publication.			
Cabinet					
	<i>Pending Add</i>	<i>In Place</i>	<i>Pending Remove</i>	<i>Not In Use</i>	
Power Cable					
Power Duct				N/A	

BT Ref : BCZ12162H

Map Reference : (centre) ST5937069811

Easting/Northing : (centre) 359370,169811

Issued : 29/08/2023 12:16:18

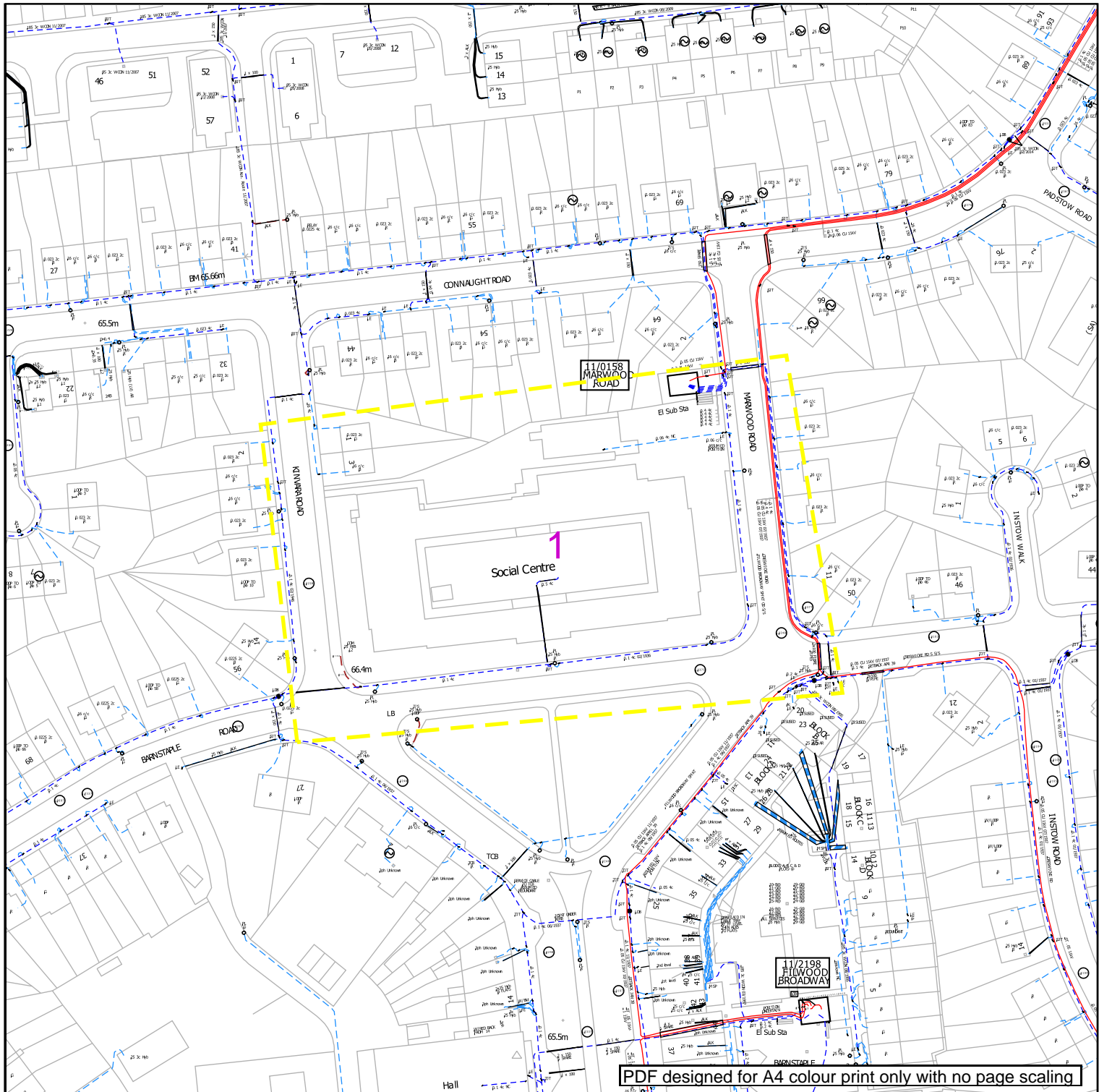
WARNING: IF PLANNED WORKS FALL INSIDE HATCHED AREA IT IS ESSENTIAL BEFORE PROCEEDING THAT YOU CONTACT THE NATIONAL NOTICE HANDLING CENTRE. PLEASE SEND E-MAIL TO: nnhc@openreach.co.uk

Reproduced from the Ordnance Survey map by BT by permission of Ordnance Survey on behalf of the Controller of Her Majesty's Stationary Office
(C) Crown Copyright British Telecommunications plc 100028040

Electric



www.nged.co.uk



PDF designed for A4 colour print only with no page scaling

nationalgrid Electricity Distribution

Contact Us

Mapping Enquiries:
All areas 0121 623 9780

General Enquiries:
All areas 0800 096 3080

0 100 m

Link Box	Overhead Line	Underground Cable	National Grid Telecoms	Pilot Cables
	PL			Pole Mounted Transformer
Site Location	Service		PME Earth	Ground Mounted Transformer
Line/Area	LV		Underground Earth	
	HV (11kV)			
	HV (33kV)			
	HV (66kV)			
	HV (132kV)			

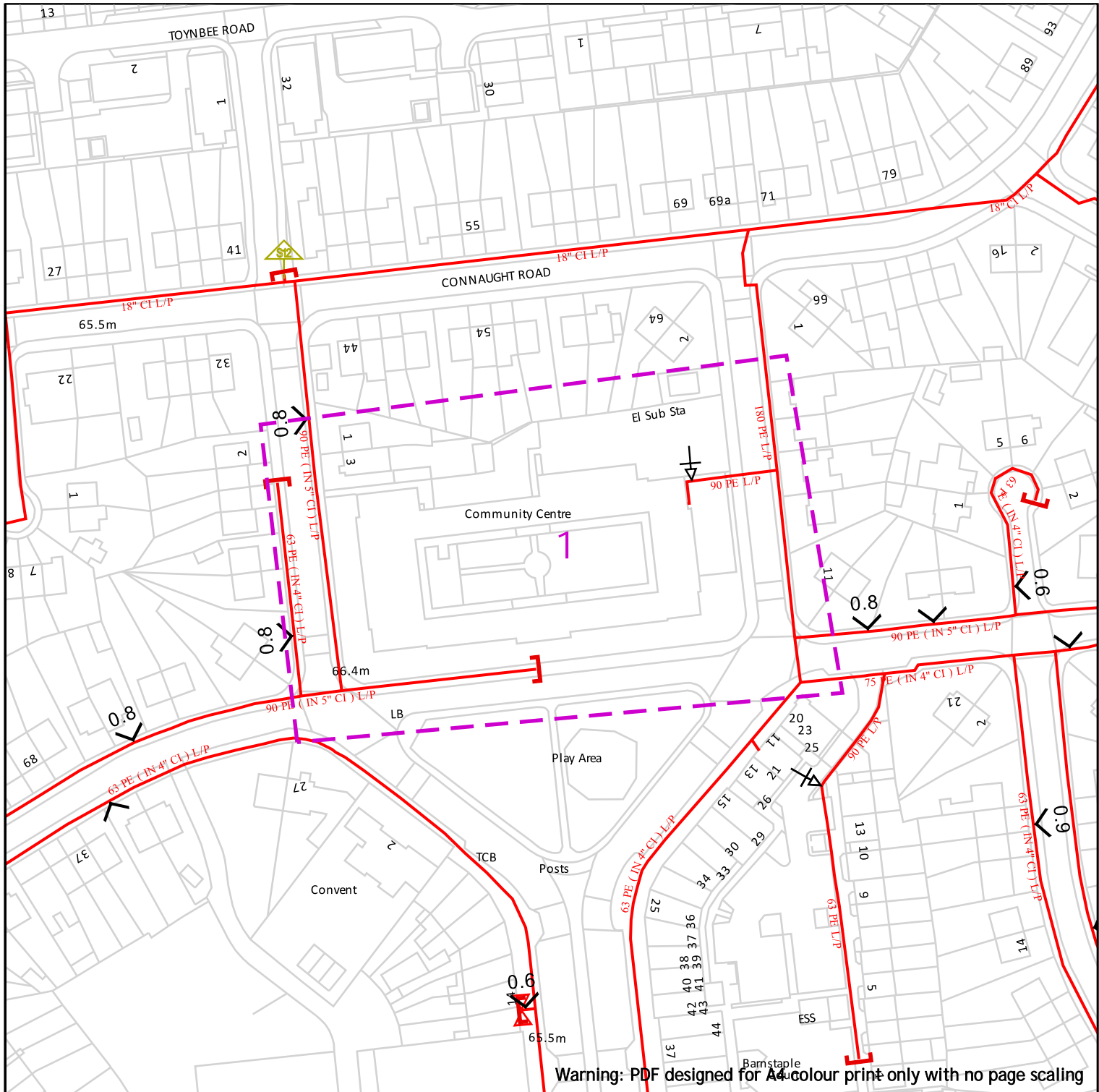
IMPORTANT NOTICES

- This information is given as a guide only and its accuracy cannot be guaranteed. Services or recent additions to the network may not be shown.
- Cables, overhead lines & substations owned by other electricity network owners or private companies may be present and may not be shown.
- You should always verify exact locations of cables using a cable locator and by careful use of hand tools in accordance with HSE guidance note HSG47.
- When working within 10m of any overhead electric line you should follow the requirements of HSE Guidance Note GS6.
- For further advice on working near our electricity cables or lines, call our General Enquiries number.
- Advice should be sought from the National Grid Electricity Distribution General Enquiries team for any work that is to take place in proximity to 132kV underground cables and 132kV overhead lines.

Report damage immediately – KEEP EVERYONE AWAY FROM THE AREA: 0800 6783 105

Crown Copyright © All Rights Reserved. Ordnance Survey Licence numbers: 100022432
 NGED Copyright: This copy has been made by or with the authority of National Grid Electricity Distribution (NGED) pursuant to Section 47 of the Copyright Designs and Patents Act 1988 unless that Act provides a relevant exception to copyright the copy must not be copied without the prior permission of the copyright owner.





Contact Us
Mapping Enquiries:
 All areas 02920 278 912
General Enquiries:
 All areas 0800 912 2999

100m

Dig Sites	Area:	Line:
	Low Pressure (LP) 21mbar – 75mbar	
	Medium Pressure (MP) 350mbar – 2bar	
	Intermediate Pressure (IP) 2bar – 7bar	
	High Pressure (HP) >7bar	

	Change of Diameter		Line/Fire Valve
	End Cap		Governor Station
	Depth of cover		

IMPORTANT NOTICES

- This information is given as a guide only and its accuracy cannot be guaranteed
- The plan only shows those pipes owned by Wales & West Utilities (WU) as its role as a licensed Gas Transporter
- Service pipes, valves, syphons, stub connections etc. may not be shown but their presence should be anticipated
- You must use safe digging practices in accordance with HS(G)47 to establish the actual position of mains, services and other apparatus before any mechanical excavation is used
- It is your responsibility to ensure this information is provided to all persons working near our plant
- If in doubt call the WU dig team on 02920 27891

Report damage immediately – KEEP EVERYONE AWAY FROM THE AREA
0800 111 999

Smell gas?
 Call the Gas Emergency Service on
0800 111 999.

Dial before you dig

dial
 Call **029 2027 8912**
 before you start work.

Investigate
 Before you dig, make sure
 you know what's below.

Go ahead
 Done your research?
 Now you can dig safely.

We need 10 days' notice

Scale: 1:1250 (When plotted at A4)

**BRISTOL
WATER**

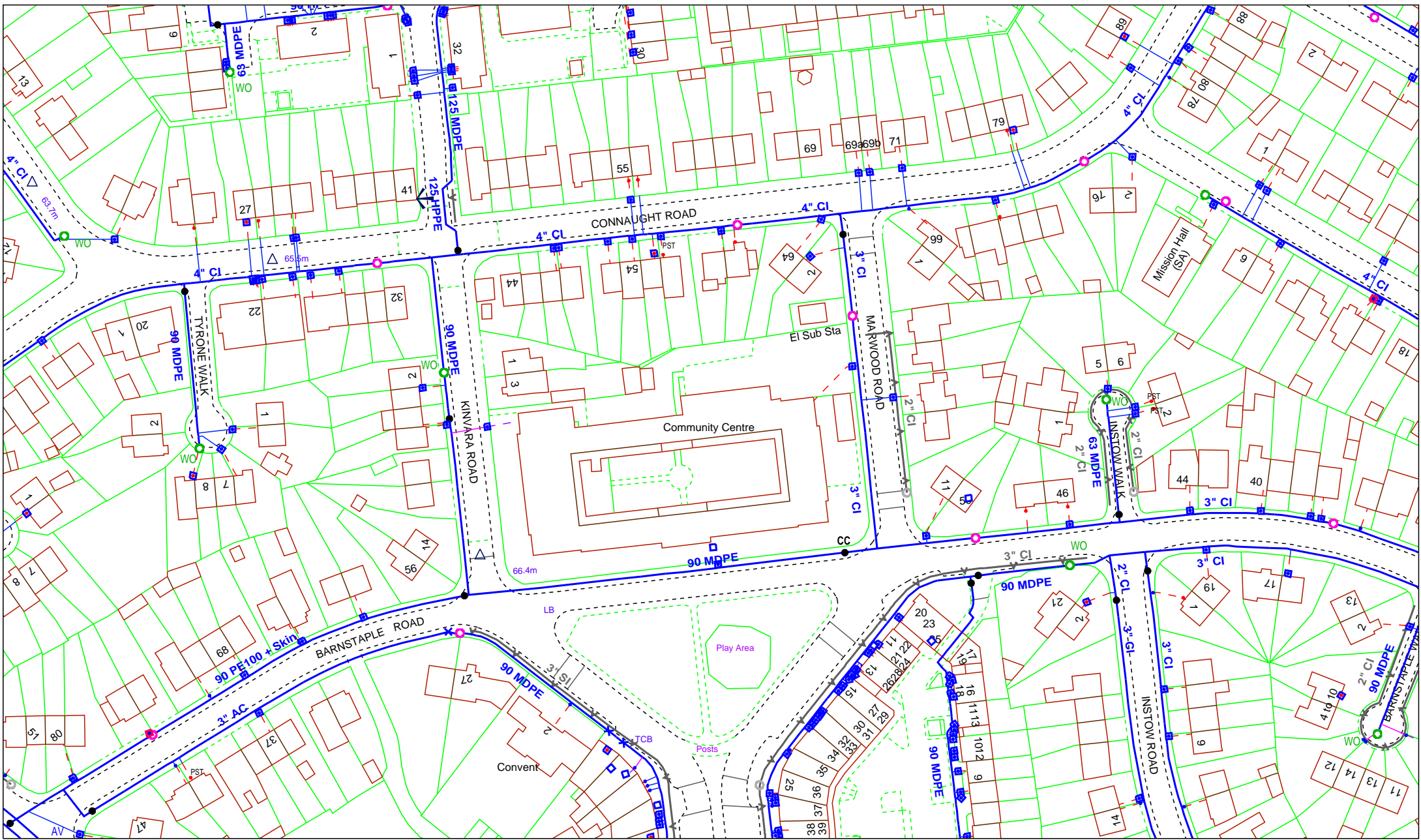
The logo for Bristol Water features the words "BRISTOL" and "WATER" in a bold, blue, sans-serif font. Below the text is a stylized blue wave graphic.

www.bristolwater.co.uk

**Wessex
Water**
a YTL company

The logo for Wessex Water features the words "Wessex" and "Water" in a blue, cursive script font. Below the text is a stylized blue wave graphic. The text "a YTL company" is written in a smaller, blue, sans-serif font below the wave.

www.wessexwater.co.uk



Scale: 1:1250 | A4 | Date: 29/08/2023

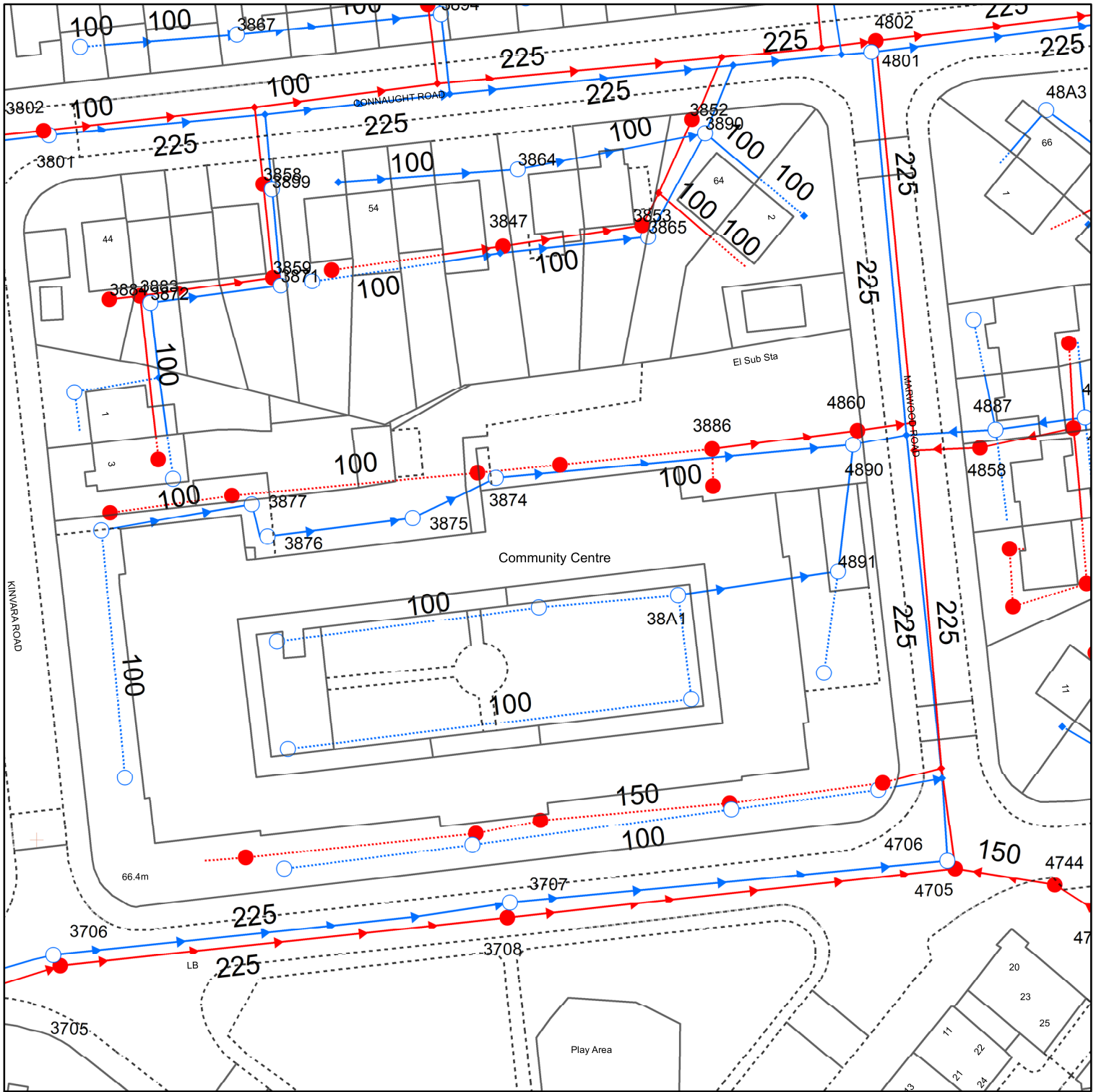
This plan is furnished as a general guide only and no warranty as to its correctness is given or implied. This plan must not be relied upon in the event of excavations or other works made in the vicinity of the Company's pipes or apparatus. Not all service pipes are shown. Based on the Ordnance Survey map with the permission of the Controller of Her Majesty's Stationery Office (c) Crown Copyright reserved Licence number : 100018106. Unauthorised reproduction infringes Crown copyright and may lead to prosecution or civil proceedings. South West Water Limited trading as Bristol Water, Registered Office: Peninsula House, Rydon Lane, Exeter EX2 7HR. Tel 0117 966 5881

EXISTING		PROPOSED		SERVICE OBJECTS	
MAINS		ABANDONED MAINS		COMMUNICATION PIPE	
RAW WATER		SLIPLINED		SUPPLY PIPE	
ABANDONED		OTHER		STOPTAP Company / Private	
SLIPLINED		CABLE WITH MAIN		COMMON COMM. PIPE	
VALVES		PRIVATE MAIN		COMMON SUPPLY PIPE	
HYDRANT: FIRE				METER Operational/Not in Use	
HYDRANT: WO					

Filwood Community Centre, Barnstaple Road, Bristol, BS4 1LQ

COORDINATES AT THE CENTRE
359370 169811

Wessex Water Network Map



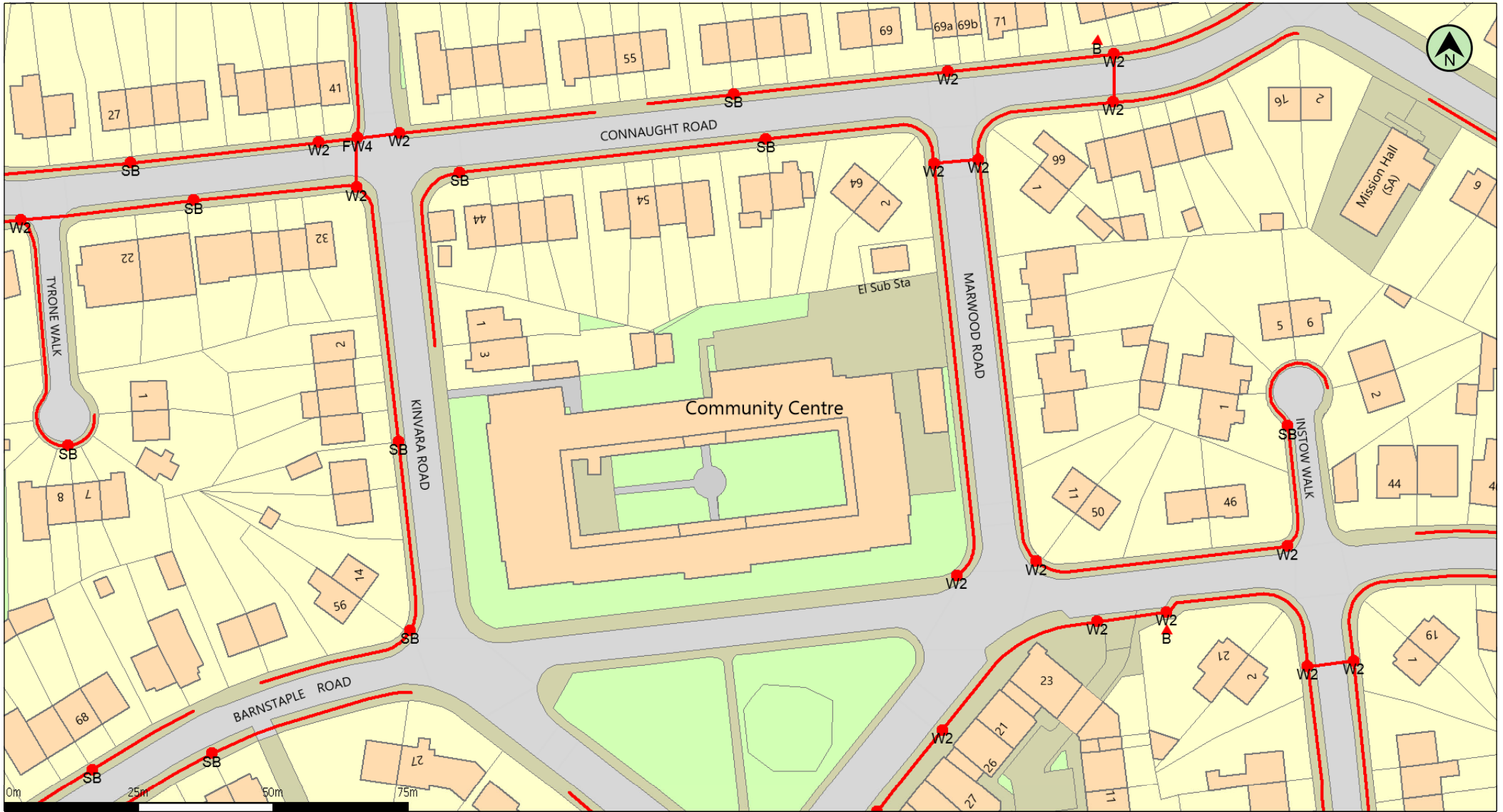
Reproduced from the Ordnance Survey map by permission on behalf of the Controller of Her Majesty's Stationery Office © Crown Copyright . Licence 100019539.

WATER MAINS	SEWERS	STRATEGIC PUBLIC	PRIVATE	SECTION 104	OTHER WESSEX PIPES	NON-WESSEX / UNKNOWN
<ul style="list-style-type: none"> Distribution Washout Raw Water Abandoned Private 	<ul style="list-style-type: none"> Foul Surface Combined Abandoned 	<ul style="list-style-type: none"> Public Sewer Private Sewer 	<ul style="list-style-type: none"> Private Sewer Private Sewer 	<ul style="list-style-type: none"> Section 104 Section 104 Section 104 Section 104 Section 104 	<ul style="list-style-type: none"> Rising Mains Standby Rising Mains EDM Effluent Disposal Overflow Syphon 	<ul style="list-style-type: none"> Private Rising Mains Culverted Watercourse Highway Drain Use Unknown Status Unknown
FITTINGS <ul style="list-style-type: none"> Hydrant Other 	STRUCTURES <ul style="list-style-type: none"> Manhole - Foul Manhole - Surface Manhole - Combined Inlet Outfall Lamphole Bifurcation - Foul Bifurcation - Surface Bifurcation - Combined Combined Sewage Overflow 	<ul style="list-style-type: none"> Pumping Station - Surface Pumping Stn - Foul/Combined Gully Vent Column Rodding Eye Catchpit Flushing Chamber Soakaway Non Return Valve Air Valve Hatch Box Washout 	<ul style="list-style-type: none"> Other Structures Attenuation Tank Storage Tank Chamber Tunnel Interceptor 			

Information in this map is provided for identification purposes only. No warranty as to accuracy is given or implied. The precise route of pipe work may not exactly match that shown. Wessex Water does not accept liability for inaccuracies. Sewers and lateral drains adopted by Wessex Water under the Water Industry (Schemes for Adoption of Private Sewers) Regulations 2011 are to be plotted over time and may not yet be shown. In carrying out any works, you accept liability for the cost of any repairs to Wessex Water apparatus damaged as a result of your works. You are advised to commence excavations using hand tools only. Mechanical digging equipment should not be used until pipe work has been precisely located. If you are considering any form of building works and pipe work is shown within the boundary of your property or a property to be purchased (or very close by) a surveyor should plot its exact position prior to commencing works or purchase. If you are proposing to build over or near Wessex Water's apparatus you should contact the Developer Services Team, tel: 01225 526333 or e-mail: developer.enquiries@wessexwater.co.uk to discuss your proposals. Details of assets within Wessex Water's land ownership are unavailable through this service.

Date: 29/08/2023
Centre: 359370, 169811
Scale: 1:625
 (when printed at A4 size)





(c) Crown copyright and database rights 2023 Ordnance Survey 100019209

Date: 29/08/23

Telecoms Plan A4

Important Information - please read The purpose of this plan is to identify Virgin Media apparatus. We have tried to make it as accurate as possible but we cannot warrant its accuracy. In addition, we caution that within Virgin Media apparatus there may be instances where mains voltage power cables have been placed inside green, rather than black ducting. Further details can be found using the "Affected Postcodes.pdf", which can be downloaded from this website. Therefore, you must not rely solely on this plan if you are carrying out any excavation or other works in the vicinity of Virgin Media apparatus. The actual position of any underground service must be verified by cable detection equipment, etc. and established on site before any mechanical plant is used. Accordingly, unless it is due to the negligence of Virgin Media, its employees or agents, Virgin Media will not have any liability for any omissions or inaccuracies in the plan or for any loss or damage caused or arising from the use of and/or any reliance on this plan. This plan is produced by Virgin Media Limited (c) Crown copyright and database rights 2023 Ordnance Survey 100019209.

Duct, Trench



Chamber / Pole

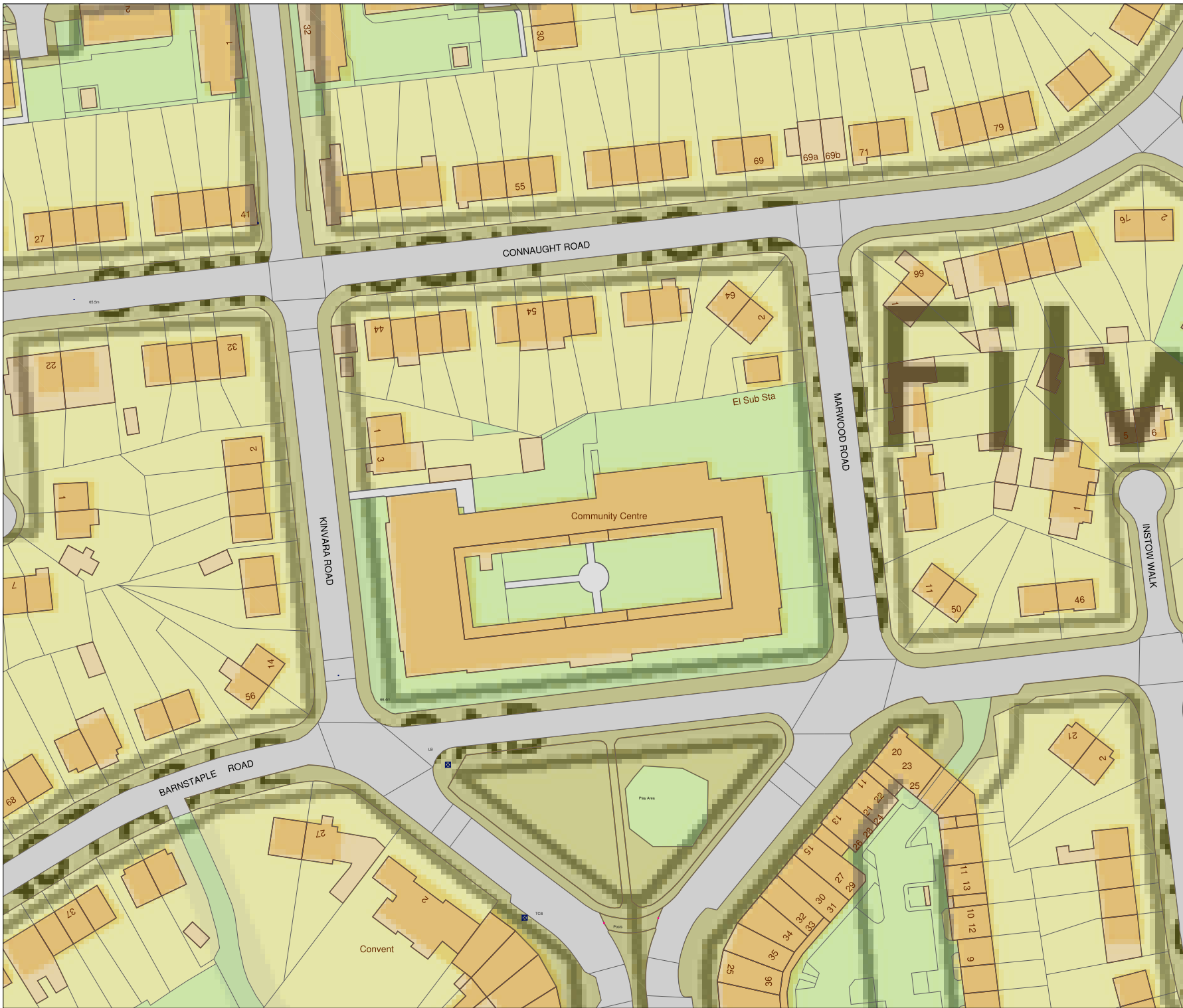


Cabinet



CityFibre

www.cityfibre.co.uk



bitmap_layout select_raster

LEGEND

- EXISTING PLANT
- EXISTING PLANT

bitmap_layout select_raster

Head Office
CityFibre Holdings Ltd
15 Bedford Street,
London
WC2E 9HE
Tel: 0845 293 0774
Web: www.cityfibre.com

Asset Office
CityFibre Holdings Ltd,
Rutherford House,
Birchwood,
Warrington,
WA3 6ZH
Email: asset.team@cityfibre.com

Disclaimer:
Information shown on this plan is for general guidance only. No warranty is made as to its accuracy. This plan must not be solely relied upon in the event of excavation or other works being carried out in the vicinity of Cityfibre plant. No liability of any kind is accepted by Cityfibre, its agents or servants for any error, omission, discrepancy or deviation. This information is valid for the date printed.

Project
Plant Enquiry

Drawing
Existing Plant

Drawn by:
smallworld Date: 29/08/2023

Drawing No. CFH_EP_000001 **Revision**
001

Scale: 1:1000 **A4**
0m 9m 18m 27m 36m 45m ↑
N



www.gtc-uk.co.uk



CARLOW RD

CONNAUGHT ROAD

MARWOOD

Filwood

CARLOW RD

3656174

PANTRY ROAD

BARNSTABLE ROAD

BARNSTAP

INSTON ROAD

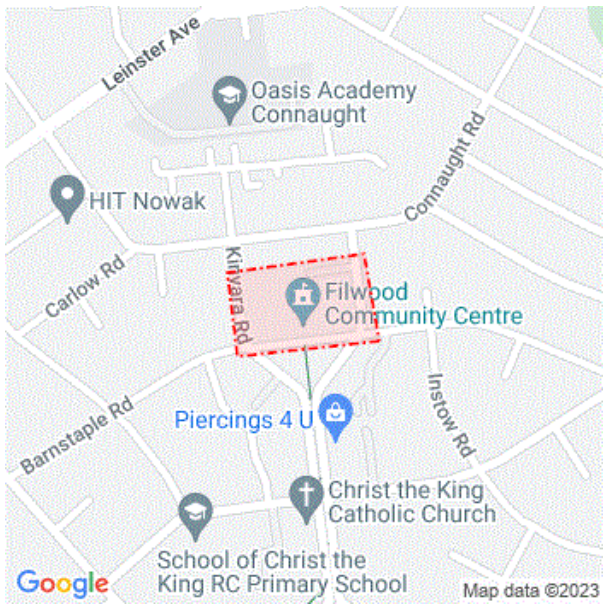
FILWOOD

ROAD



www.lineearchbeforeudig.co.uk

Enquirer			
Name		Phone	
Company		Mobile	
Address			
Email			

Enquiry Details	Site Map
Enquiry type	Initial Enquiry
Work category	Planning Applications
Work type	C2 Enquiry (Stat Undertakers only)
Work type buffer*	25 metres
Start date	30/08/2023
End date	30/08/2023
Scheme/Reference	U23-9642
Search location	XY= 359370, 169811
Confirmed location	-03 51
Site size	9317 metres square
Site Contact Name	Not Supplied
Site Phone No.	Not Supplied
Description of Works	 <p style="font-size: small; text-align: right;">Map data ©2023</p>
<p>Please note that the above map only displays the location of the proposed work site and will not display any of the Members' pipes and cables. It is imperative that this area accurately reflects the proposed work site.</p>	
<p>* The WORK TYPE BUFFER is a distance added to your search area based on the Work type you have chosen.</p>	

Affected LSBUD members (LSBUD Members who have assets registered on LSBUD within the vicinity of your search area.)			
Asset Owner	Phone/Email	Emergency Only	Status
National Grid Electricity Distribution	08000963080	08006783105	Await response
Wales and West Utilities	02920278912	0800111999	Await response

Status explanation

Await Response means that the asset owner will contact you. This is typically by sending the plan response but they may ask for further information before being able to do so, particularly if any payments or authorisations are required.

Email Additional Info means that the asset owner needs further information about your works to assess your enquiry before providing a response. Please provide any details you have available including plans, method statements etc. if available.

Important notices

It is very important that you correctly understand what the service does and the procedures in order for you to work safely. Please refer to the LSBUD Support Page (www.lsbud.co.uk/lineasearchbeforeudig-support) for further guidance.

This information includes how to provide additional information to the LSBUD Members who request it to provide a response to your enquiry.

Validity and search criteria. The results of this enquiry are based on the confirmed information you entered and are valid only as at the date and time of the enquiry. It is your responsibility to ensure that the Enquiry Details are correct, and LineasearchbeforeUdig (LSBUD) accepts no responsibility for any errors or omissions in the Enquiry Details or any consequences thereof. LSBUD Members update their asset information on a regular basis so you are advised to consider this when undertaking any works. It is your responsibility to choose the period of time after which you need to resubmit any enquiry but the maximum time (after which your enquiry will no longer be dealt with by the LSBUD Helpdesk and LSBUD Members) is 28 days. If any details of the enquiry change, particularly including, but not limited to, the location of the work, then a further enquiry must be made.

Terms and Conditions. Please note that this enquiry is subject always to our standard terms and conditions available at www.lsbud.co.uk ("Terms of Use") and the disclaimer at the end of this document. Please note that in the event of any conflict or ambiguity between the terms of this Enquiry Confirmation and the Terms of Use, the Terms of Use shall take precedence.

List of not affected LSBUD members

(LSBUD Members who do not have assets registered on the LSBUD service within the vicinity of your search area.)

Angus Energy	AWE Pipeline	B & D Energy Limited
Balfour Beatty Investments Limited	BOC Limited (A Member of the Linde Group)	Box Broadband
BP Exploration Operating Company Limited	BPA	Cadent Gas
Cambridgeshire County Council Climate Change and Energy Services	CATS Pipeline c/o Wood Group PSN	Cemex
Centrica Storage Ltd	CNG Services Ltd	Concept Solutions People Ltd
ConocoPhillips (UK) Teesside Operator Ltd	D.S.Smith	Diamond Transmission Corporation
DIO (MOD Abandoned Pipelines)	DIO (MOD Live Pipelines)	E.ON UK CHP Limited
EDF Energy Renewables Ltd	EirGrid	Eleclink Limited
Electricity North West Limited	Energy Assets Networks	ENI & Himor c/o Penspen Ltd
EnQuest NNS Limited	EP Langage Limited	ESB CCGT Power station (Carrington Gas Pipeline)
ESP Utilities Group	ESSAR	Esso Petroleum Company Limited
euNetworks Fiber UK Ltd	EXA Infrastructure	Exolum Pipeline System
Fulcrum Electricity Assets Limited	Fulcrum Pipelines Limited	Gamma
Gas Networks Ireland (UK)	Gateshead Energy Company	Gigaclear Ltd
Harbour Energy	Heathrow Airport LTD	Humbly Grove Energy
IGas Energy	INEOS FPS Pipelines	INEOS Manufacturing (Scotland and TSEP)
INOVYN ChlorVinyls Limited	INOVYN Enterprises Limited	Intergen (Coryton Energy or Spalding Energy)
Jurassic Fibre Ltd	Kensa Utilities	Last Mile
Mainline Pipelines Limited	Manchester Jetline Limited	Manx Cable Company
Marchwood Power Ltd (Gas Pipeline)	Melbourn Solar Limited	Moray East Offshore Windfarm
MUA Group Limited	National Gas Transmission	National Grid Electricity Transmission
Neos Networks	Northern Gas Networks Limited	Northumbrian Water Group
NPower CHP Pipelines	NTT Global Data Centers EMEA UK Ltd	NYnet Ltd
Ogi	Oikos Storage Limited	Ørsted
Palm Paper Ltd	Perenco UK Limited (Purbeck Southampton Pipeline)	Petroineos
Phillips 66	Portsmouth Water	Premier Transmission Ltd (SNIP)
Redundant Pipelines - LPDA	RWE - Great Yarmouth Pipeline (Bacton to Great Yarmouth Power Station)	RWEnpower (Little Barford and South Haven)
SABIC UK Petrochemicals	SAS Utility Services Ltd	Scottish and Southern Electricity Networks
Scottish Power Generation	Seabank Power Ltd	SES Water
SGN	Shell	Shell NOP
SP Energy Networks	Spring Fibre Limited	Squire Energy Networks
SSE Generation Ltd	SSE Transmission	SSE Utility Solutions Limited



Enquiry Confirmation

LSBUD Ref: 30659000

Date of enquiry: 29/08/2023

Time of enquiry: 12:07

Storengy	Tata Communications (c/o JSM Construction Ltd)	Total Colnbrook Pipelines
Total Finaline Pipelines	Transmission Capital	UK Power Networks
Uniper UK Ltd	University of Cambridge Granta Backbone Network	Vattenfall
Veolia ES SELCHP Limited	Veolia ES Sheffield Ltd	Voneus Limited
VPI Power Limited	West of Duddon Sands Transmission Ltd	Westminster City Council
Zayo Group UK Ltd c/o JSM Group Ltd		

Non-LSBUD members (Asset owners not registered on LSBUD)

(The following Non-LSBUD Members may have assets in your search area. It is YOUR RESPONSIBILITY to contact them before proceeding.

Please be aware this list is not exhaustive and it is your responsibility to identify and contact all asset owners within your search area.)

Asset Owner	Preferred contact method	Phone	Status
Bristol Water	development.services@bristolwater.co.uk	01179665881	Not Notified
BT	https://www.swns.bt.com/pls/mbe/welcome.home	08000232023	Not Notified
CityFibre	asset.team@cityfibre.com	033 3150 7282	Not Notified
Colt	plantenquiries@catelecomuk.com	01227768427	Not Notified
Equans	nrswa.uk@equans.com	0800 130 3600	Not Notified
GTC	https://pe.gtc-uk.co.uk/PlantEnqMembership	01359240363	Not Notified
Lumen Technologies	plantenquiries@ocugroup.com	02087314613	Not Notified
Mobile Broadband Network Limited	mbnl.plant.enquiries@turntown.com	01212 621 100	Not Notified
Sky UK Limited	nrswa@sky.uk	02070323234	Not Notified
Sota	sota.plantenquiries@ocugroup.com		Not Notified
Utility assets Ltd	assetrecords@utilityassets.co.uk		Not Notified
Verizon Business	osp-team@uk.verizonbusiness.com	01293611736	Not Notified
Virgin Media	http://www.digdat.co.uk	08708883116	Not Notified
Vodafone	osm.enquiries@atkinsglobal.com	01454662881	Not Notified
Wessex Water	Asset.enquiries@wessexwater.co.uk	01225526422	Not Notified

Disclaimer

Please refer to LSBUD's Terms of Use for full terms of use available at www.lsbud.co.uk

The results of this Enquiry are personal to the Enquirer and shall not be shared with or relied upon by any other party. The asset information on which the Enquiry results are based has been provided by LSBUD Members, therefore LSBUD will provide no guarantee that such information is accurate or reliable nor does it monitor such asset information for accuracy and reliability going forward. There may also be asset owners which do not participate in the enquiry service operated by LSBUD, including but not exclusively those set out above. Therefore, LSBUD cannot make any representation or give any guarantee or warranty as to the completeness of the information contained in the enquiry results or accept any responsibility for the accuracy of the mapping images used. LSBUD and its employees, agents and consultants accept no liability (save that nothing in this Enquiry Confirmation excludes or limits our liability for death or personal injury arising from our negligence, or our fraud or fraudulent misrepresentation, or any other liability that cannot be excluded or limited by English law) arising in respect thereof or in any other way for errors or omissions including responsibility to any person by reason of negligence.

LSBUD Members

Key:

A: Affected

NA: Non-Affected

AWE Pipeine	NA	Exolum Pipelines	NA	RWE Npower	NA
BOC Limited	NA	Fulcrum Pipelines	NA	Scottish Power Generation	NA
BPA	NA	Gamma	NA	Seabank Power Ltd	NA
Carrington Gas Pipelines	NA	Gateshead Energy Company	NA	Shell Pipelines	NA
CATS Pipeline	NA	Gigaclear PLC	NA	Tata Communications	NA
Cemex	NA	GTT	NA	Total Finaline Pipelines	NA
Centrica Storage Ltd	NA	IGas Energy	NA	Transmission Capital	NA
CLH Pipeline	NA	INEOS FPS Pipelines	NA	Uniper UK Ltd	NA
DIO Abandoned Pipelines	NA	Jurassic Fibre	NA	Vettenfall	NA
E.On UK CHP	NA	Manchester Jetline Ltd	NA	Veolia ES SEL CHP	NA
EriGrid	NA	Marchwood Power Ltd	NA	Westminster City Council	NA
EnQuest NNS Ltd	NA	NPower CHP Pipelines	NA	Zayo Group	NA
EP Langage Ltd	NA	Perenco UK Ltd	NA		
ESP Utilities Group	NA	Premier Transmission Ltd	NA		
EXA	NA	Redundant Pipelines	NA		

Non LSBUD Members

<u>Company</u>	<u>Affected Y/N</u> (Report and Letter included for Affected companies)
Arelion	N
Colt Technology	N
Cross Rail	N
ENGIE	N
EU Networks	N
Instalcom	N
KPN	N
Last Mile	N
Mobile Broadband	N
Network Rail	N
Sky UK	N
SOTA	N
Transport for London	N
Utility Assets	N
Verizon	N



www.zeticauxo.com

UNEXPLODED BOMB RISK MAP



SITE LOCATION

Location: BS4 1LQ,
Map Centre: 359425,169828



LEGEND

- High:** Areas indicated as having a bombing density of 50 bombs per 1000acre or higher.
- Moderate:** Areas indicated as having a bombing density of 15 to 49 bombs per 1000acre.
- Low:** Areas indicated as having 15 bombs per 1000acre or less.

- military
- industry
- UXO find
- transport
- dock
- Luftwaffe targets
- utilities
- Bombing decoy
- other

How to use your Unexploded Bomb (UXB) risk map?

The map indicates the potential for Unexploded Bombs (UXB) to be present as a result of World War Two (WWII) bombing.

You can incorporate the map into your preliminary risk assessment* for potential Unexploded Ordnance (UXO) for a site. Using this map, you can make an informed decision as to whether more in-depth detailed risk assessment* is necessary.

What do I do if my site is in a moderate or high risk area?

Generally, we recommend that a detailed UXO desk study and risk assessment is undertaken for sites in a moderate or high UXB risk area.

Similarly, if your site is near to a designated Luftwaffe target or bombing decoy then additional detailed research is recommended.

More often than not, this further detailed research will conclude that the potential for a significant UXO hazard to be present on your site is actually low.

Never plan site work or undertake a risk assessment using these maps alone. More detail is required, particularly where there may be a source of UXO from other military operations which are not reflected on these maps.

If my site is in a low risk area, do I need to do anything?

If both the map and other research confirms that there is a low potential for UXO to be present on your site then, subject to your own comfort and risk tolerance, works can proceed with no special precautions.

A low risk really means that there is no greater probability of encountering UXO than anywhere else in the UK.

If you are unsure whether other sources of UXO may be present, you can ask for one of our **pre-desk study assessments (PDSA)**

If I have any questions, who do I contact?

tel: **+44 (0) 1993 886682**

email: **uxo@zetica.com**

web: **www.zeticauxo.com**

The information in this UXB risk map is derived from a number of sources and should be used in conjunction with the accompanying notes on our website: (<https://zeticauxo.com/downloads-and-resources/risk-maps/>)

Zetica cannot guarantee the accuracy or completeness of the information or data used and cannot accept any liability for any use of the maps. These maps can be used as part of a technical report or similar publication, subject to acknowledgment. The copyright remains with Zetica Ltd.

It is important to note that this map is not a UXO risk assessment and should not be reported as such when reproduced.

*Preliminary and detailed UXO risk assessments are advocated as good practice by industry guidance such as CIRIA C681 'Unexploded Ordnance (UXO), a guide for the construction industry'.



Environment
Agency

www.flood-map-for-planning.service.gov.uk

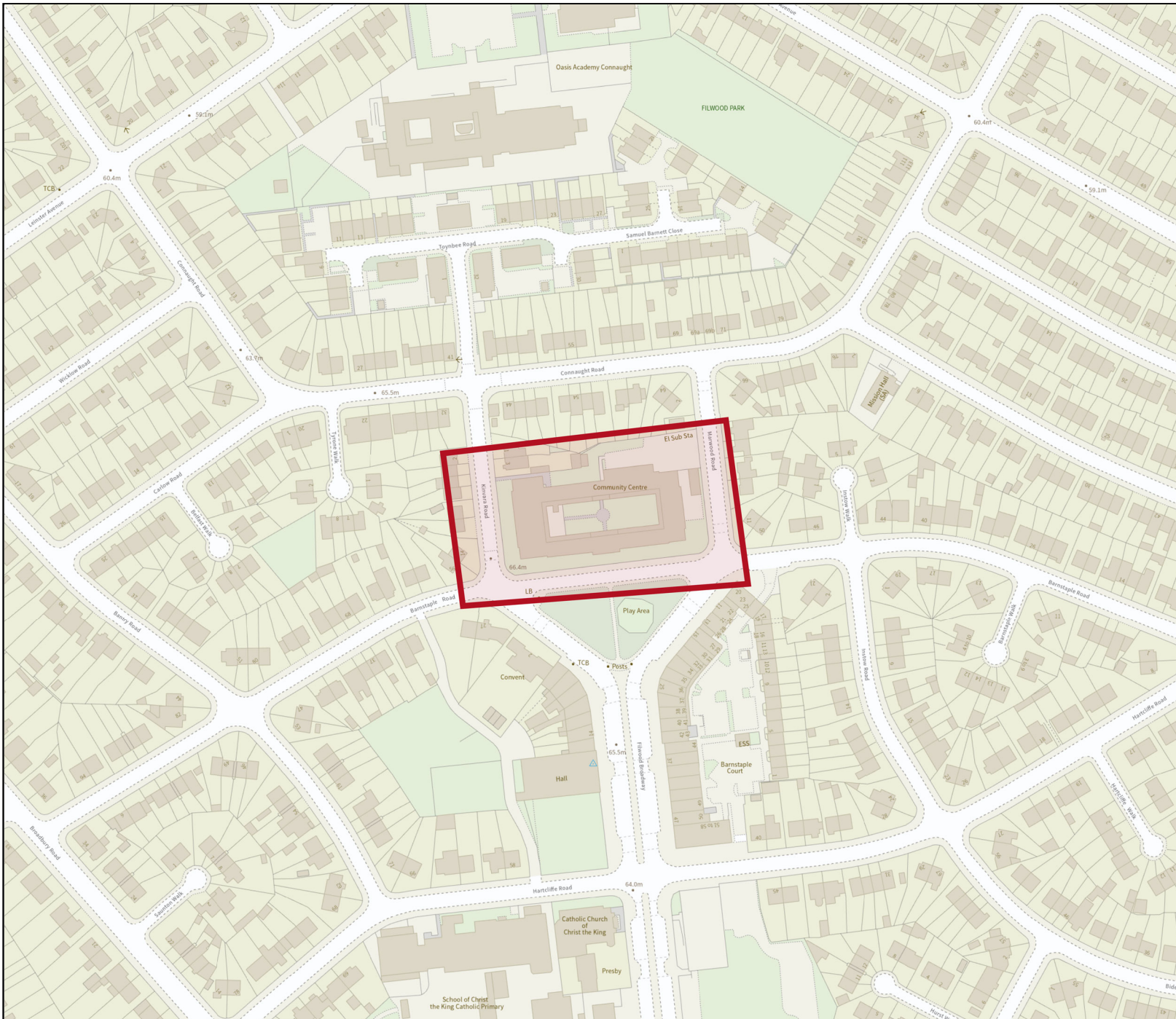
Flood map for planning


Your reference
<Unspecified>

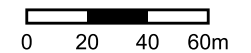
Location (easting/northing)
359359/169798

Scale
1:2500

Created
29 Aug 2023 12:10



-  Selected area
-  Flood zone 3
-  Flood zone 2
-  Flood zone 1
-  Flood defence
-  Main river
-  Water storage area



Flood map for planning

Your reference
<Unspecified>

Location (easting/northing)
359359/169798

Created
29 Aug 2023 12:10

Your selected location is in flood zone 1, an area with a low probability of flooding.

You will need to do a flood risk assessment if your site is **any of the following**:

- bigger than 1 hectare (ha)
- In an area with critical drainage problems as notified by the Environment Agency
- identified as being at increased flood risk in future by the local authority's strategic flood risk assessment
- at risk from other sources of flooding (such as surface water or reservoirs) and its development would increase the vulnerability of its use (such as constructing an office on an undeveloped site or converting a shop to a dwelling)

Notes

The flood map for planning shows river and sea flooding data only. It doesn't include other sources of flooding. It is for use in development planning and flood risk assessments.

This information relates to the selected location and is not specific to any property within it. The map is updated regularly and is correct at the time of printing.

Flood risk data is covered by the Open Government Licence **which** sets out the terms and conditions for using government data. <https://www.nationalarchives.gov.uk/doc/open-government-licence/version/3/>

Use of the address and mapping data is subject to Ordnance Survey public viewing terms under Crown copyright and database rights 2022 OS 100024198. <https://flood-map-for-planning.service.gov.uk/os-terms>

Appendices

Electric- National Grid Electricity Distribution

Customer Letter
Avoidance of Danger
Look Out Look up

~

Gas- Wales and West

Customer Letter
General Conditions
Dial Before you Dig

~

Water- Bristol Water/ Wessex Water

None

~

Cable TV- Virgin Media

None

~

GTC

GTC Letter

~

LSBUD Members

None

Our Ref: 30659000 Your Ref: U23-9642

Tuesday, 29 August 2023

I now enclose a copy of our plan showing existing National Grid Electricity Distribution (NGED) Electricity / National Grid Telecoms (NGT) apparatus in the vicinity of your proposed works. This information is given as a general guide only and its accuracy cannot be guaranteed. Please note that all NGED equipment on site should be assumed to be LIVE until NGED prove otherwise and provide you with confirmation to this effect in writing. Recent additions to our network, or service connections between the main cable and a building or street lamp may not be shown.

Damage to underground cables and contact with overhead lines can cause severe injury or may prove fatal. If you are excavating on site in the vicinity of either NGED Electrical apparatus or NGT Telecoms apparatus you must comply with the requirements of the following:-

Health & Safety Executive guidance HS(G)47, Avoiding Danger from underground services.

Work taking place in the vicinity of our plant is also regulated under the:-

Electricity at Work Regulations 1989, Health and Safety Act 1974, CDM Regulations 2015.

Safe working procedures should be defined and practiced

Please ensure that the use of mechanical excavators in the vicinity of our plant is kept to a minimum. NGT Telecoms ducts contain fibre cables, which are expensive to repair. Therefore, extreme care must be taken whilst working in the vicinity of these ducts, hand digging methods being used to determine their precise position.

If there are overhead lines crossing your site and your proposal involves building works which may infringe the clearance to our overhead system then you should call the relevant general enquiries number (see page 2 of this letter) for advice. Where overhead lines cross your site you must comply with the requirements of Health & Safety Executive guidance as laid down in GS6, Avoidance of Danger from Overhead Electric Lines.

Where diversions to NGED apparatus are needed to allow change to occur on site, the cost of these alterations may be charged to the persons responsible for the works.

If you require advice in connection with your proposals please contact the relevant general enquiries number (see page 2 of this letter)

Following consultation the local NGED team will where necessary prepare detailed proposals and provide a quotation for any necessary alterations and/or development of our equipment on the site.

This information is given as a guide only and its accuracy cannot be guaranteed. This plan is based on data from our Geographic Information System, which is updated every 24 hours to reflect changes to our network. The information contained in this plan reflects the most recent network GIS data, however changes to the network (including network additions and new service

National Grid Electricity

Distribution

Mapping Centre

Toll End Road

Tipton

West Midlands

United Kingdom

DY4 0HH

www.nationalgrid.co.uk

Map Response

T 0121 623 9780

NGED.MapResponse

@nationalgrid.co.uk

National Grid Electricity

Distribution

South West - 02366894

South Wales - 02366985

East Midlands - 02366923

West Midlands - 03600574

Registered in

England and Wales

Registered Office:

Avonbank

Feeder Road

Bristol

BS2 0TB

connections) may not be shown. You are advised to obtain an up to date plan on the date of commencing on-site works.

Yours sincerely
NGED Map Response Team

Contact Us

Emergency or Power Supply issues

In an emergency call 105, 24 hours a day.

Mapping Enquiries

If you have an enquiry relating to this letter or the attached map plan, please contact us using the following information:

Telephone 0121 623 9780
Email NGED.MapResponse@nationalgrid.co.uk

General Enquiries

If you have a general enquiry, please call us on the following telephone number:

All areas 0800 096 3080

LSBUD

If you have an enquiry relating to the use of the LSBUD website please contact LSBUD using the following information:

Telephone 0345 437 7365
Email enquiries@LSBUD.co.uk
Website www.LSBUD.co.uk

Steps to help keep you safe

- **If you are working within 10 metres of our 33kV, 66kV, 132kV underground electricity cables or within 10 meters of an overhead electricity line you should call the relevant General Enquiries for free safety advice.**

Safety Documents – please download our informative safety documents to help ensure that you, your staff and the public are kept safe whilst working in the vicinity of electricity.

<https://www.nationalgrid.co.uk/customers-and-community/health-safety/public-safety-advice>

- **Make sure you have up to date plans** - remember that recent additions to our network or service connections between the main cable and a building or street lamp may not be shown.
- **Look for signs of service cables** - an electricity meter box or nearby streetlamp may give you an indication that service cables are present in your area of work.
- **Non NGED Network** - electricity cables, lines and equipment owned by others may also be present in addition to NGED network. They are unlikely to be shown on our plans.
- **Use a cable locator** - trace electricity cables and mark the position of them using paint or other waterproof marking on the ground.
- **Hand dig trial holes** - to confirm the position of cables in close proximity to your area of your work and use spades and shovels rather than picks, pins or forks.
- **Have an emergency plan** - so that everyone working on site understands what to do in the event of an underground electricity cable being damaged or contact being made with an overhead electricity line.
- **If you are working within 10 meters** of an overhead electricity line then it may be necessary for you to erect warning signs and markers, or height restriction goal posts. Ensure that you comply with the requirements of Health & Safety Executive guidance laid down in GS6, Avoidance of Danger from Overhead Electric Lines.
- **If you are erecting a structure** that could allow anyone standing on it, or its access device (ladder, scaffold, MEWP), to come within 3m of any overhead electric line then **you must inform us**. This is your duty and a legal requirement under the Electricity Safety, Quality & Continuity Regulations 2002.
- **If you cannot work safely** around the underground electricity cable or overhead electricity line, then you may need to get it moved to allow your works to go ahead. Call the general enquiry numbers above for guidance.
- **It is possible that cables or pipes may be embedded in concrete** - electricity cables embedded in concrete **MUST** be made 'dead' by Western Power Distribution or the cable owner before the concrete is broken out. Alternatively, another safe way of working should be agreed.
- **Cables are sometimes covered by tiles or a marker tape** - these can be concrete, polythene or earthenware and are a useful early warning of the presence of cables; you should avoid disturbing any tiles or tape to expose the cable. Not all cables have these warning indicators.

A photograph of a worker in a yellow safety suit and white helmet working on a large array of red cables in a tunnel. The worker is looking towards the camera. The cables are arranged in rows and are secured with metal brackets. The background shows the interior of a tunnel with some equipment and a cardboard box.

nationalgrid

Avoidance of danger from electricity overhead lines and underground cables

National Grid Electricity Distribution's information to manage safety whilst working in the vicinity of our equipment.

nationalgrid.co.uk

CALL 105

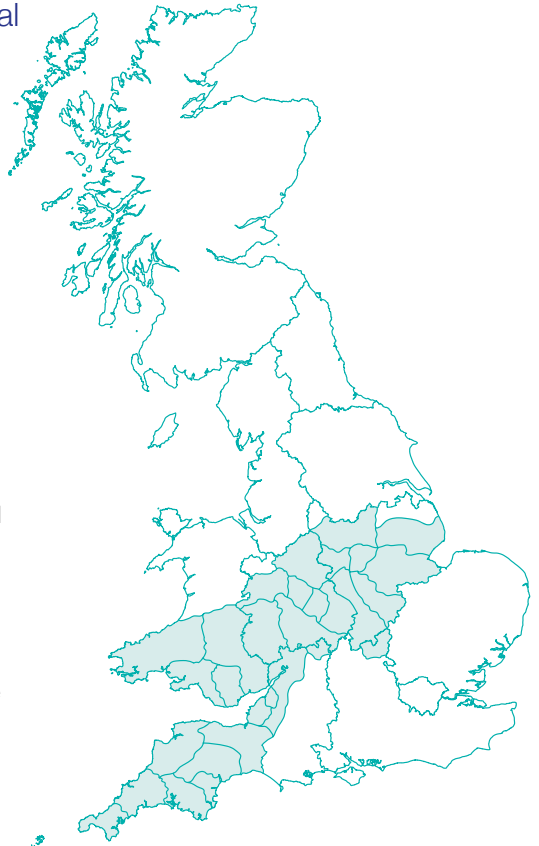

Avoidance of danger from electricity overhead lines and underground cables

Every year in the UK on average, two people are killed and many more are injured when mechanical plant and machinery comes into contact or close proximity to overhead electricity lines.

Although electric shock is the first thing that people associate with coming into contact with our network, those who have witnessed the effects of damage to our system are shocked by the amount of heat, light and noise that are the result of an electrical flashover.

In the Midlands, South West and South Wales, National Grid Electricity Distribution (NGED) have had to attend to incidents where people have accidentally made contact with one of our live electricity overhead lines or damaged an underground cable and became seriously injured.

A significant number of these accidents occurred whilst people were working in the vicinity of overhead and underground electrical apparatus and this booklet has been produced to provide general guidance on how you and your employees can avoid becoming one of these statistics.



Planning your work

It makes sense to consider your safety while in the vicinity of our equipment as early in your planning process as possible.

One of the first things you should do whenever you are planning your work is to check whether there is any of our equipment in the immediate vicinity. You should do this whether your work is taking place on public (e.g. highways and footpaths) or on private land.

Companies and organisations can request plans through LSBUD (Linesearch BeforeUdig) **lsbud.co.uk** – this site provides the same high quality plans and service that the NGED Webmap system has provided in the past, with the significant added benefit of searching over 40 other asset owners from a single query, including underground and overhead electricity networks, gas, high pressure fuel, water and fibre optic networks.

(Please note: not all asset owners are represented by LSBUD, and enquiries should also be made independently to all other relevant organisations).

This service allows you to request plans online and receive an information pack back via email within minutes.

Domestic/private customers should request plans using the phone number, email or postal address shown at the bottom of this section.

For instance, take a good look around your site to see if there are any visible overhead lines.

You should also bear in mind that we have a very extensive network of underground cables, and we are always happy to supply a plan from our Map Response Team who can be contacted via the following;

Tel:
0121 623 9780

Email:
nged.mapresponse@nationalgrid.co.uk

It is always safer to assume that there are underground cables present in the ground until you have proven otherwise.

An online mapping service is available at: **nationalgrid.co.uk/our-network/check-before-you-dig-location-of-our-cables-and-equipment**

Working in the vicinity of underground cables

Having obtained copies of our network maps, it is important to recognise that in most cases there will be no surface indication of the presence of underground cables.

We therefore advise that you take the following actions:

- make sure that you have up-to-date copies of our cable record plans on site - not back in the office
- don't assume that these plans are to scale if they have been faxed or copied
- make sure that a competent person using a Cable Avoidance Tool (CAT) locates all of the cables shown on these plans
- mark the locations of cables on the ground surface with waterproof road paint or other permanent marker
- always assume that our cables are live unless we have informed you, in writing, otherwise
- by hand, dig trial holes to locate the exact position of all cables. Always use an insulated spade or shovel – never use a pick, fork or power tool – push the spade or shovel into the ground applying foot pressure
- look out for ducts, marker tape or tiles but do not rely on these. Even if a cable route was originally laid in a duct or with a marker tape, these may have been removed during other excavations at a later date along with all or part of the cable route
- brief all people working in the vicinity of the presence and location of all underground cables.



Under no circumstances should you attempt to work on, or interfere with, any of our underground cables

The only people qualified to work on this equipment are our operatives; who have been specifically trained and are authorised in writing to do so.

Please also be aware that:

- cable record plans are not guaranteed to be completely accurate. Kerb lines, roads and buildings may have been moved or altered since the cables were laid
- cables should ordinarily be at least 450mm deep, but don't assume this to be the case where you are working – ground levels could have changed
- not all service cables are shown on record plans, so look for cables running down poles and bear in mind that all buildings, street lights and street furniture are likely to have cables running to them. Cables feeding street furniture may be relatively shallow near to the furniture
- cables do not run in straight lines. They often “snake” through the ground avoiding surface and buried obstacles that may not be visible to you
- cables are flexible and can change direction and depth abruptly – for this reason never use mechanical excavators within 0.5m of any underground electricity cable even if you have located it with trial holes
- **no attempt should be made to break out concrete surrounding a cable. Please contact us immediately on our general enquiries number and we will discuss the options for safe working which may include making the cable dead or you moving your work site if possible. If we need to make the cable dead we may need to provide our customers with two weeks notice of the power interruption**
- our cables and joints are not designed to act as steps or to be left unsupported. If you remove support from any cable, you will need to support it using temporary hangers at not more than 0.5m intervals.
- when backfilling, please consolidate the ground under the cables, cover the cable with soil free of stones or with stone dust and replace any cable marker tiles, ducts and tape.

If you damage an underground cable

You must immediately clear the area of personnel because the cable could still be live, or become live again.

If a machine is still in contact with the cable, instruct the driver to jump clear of the vehicle, avoiding simultaneous contact with any part of the machine and the ground. Try to land with your feet as close together as possible.

Where possible, continue to move away from the vehicle using “bunny hops” with your feet together until at least 15m from the vehicle.

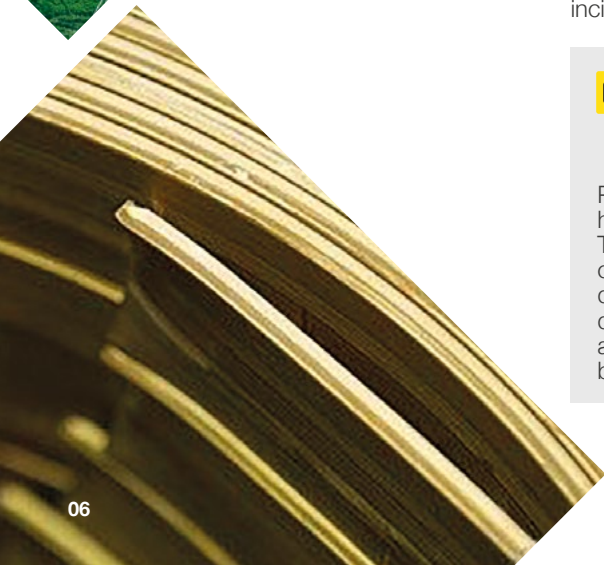
Please contact us on our emergency number immediately and tell us what has happened. Please be ready to provide us with a contact telephone number and an accurate location or set of directions – this will help us in getting our staff to site quickly to minimise any danger and lessen the disruption to your work.

Incident locations can be hard to describe. Using the free What3Words app will enable us to quickly and easily identify where the incident has taken place across our network.

CALL 105



Please report any damage to a cable, however superficial it might seem. The cable may not fail at the time of damage, but it could fail later, causing danger to our staff and other contractors, disruption to our customers’ supplies, and also – if we trace the damage back to you – a large repair bill.



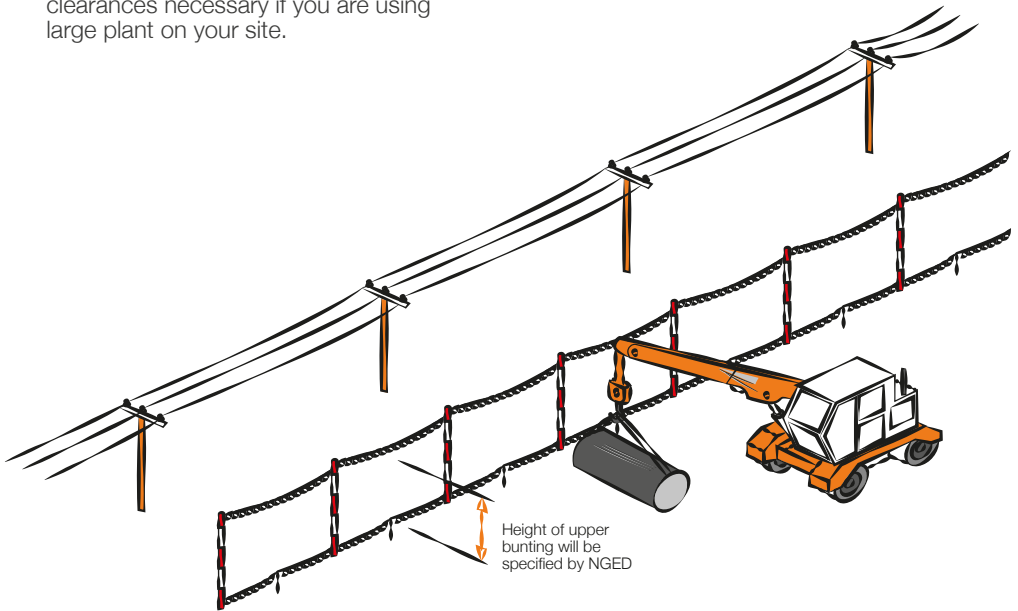
Working in the vicinity of overhead lines

Under no circumstances should you attempt to work on, or interfere with any of our overhead line equipment or service wires.

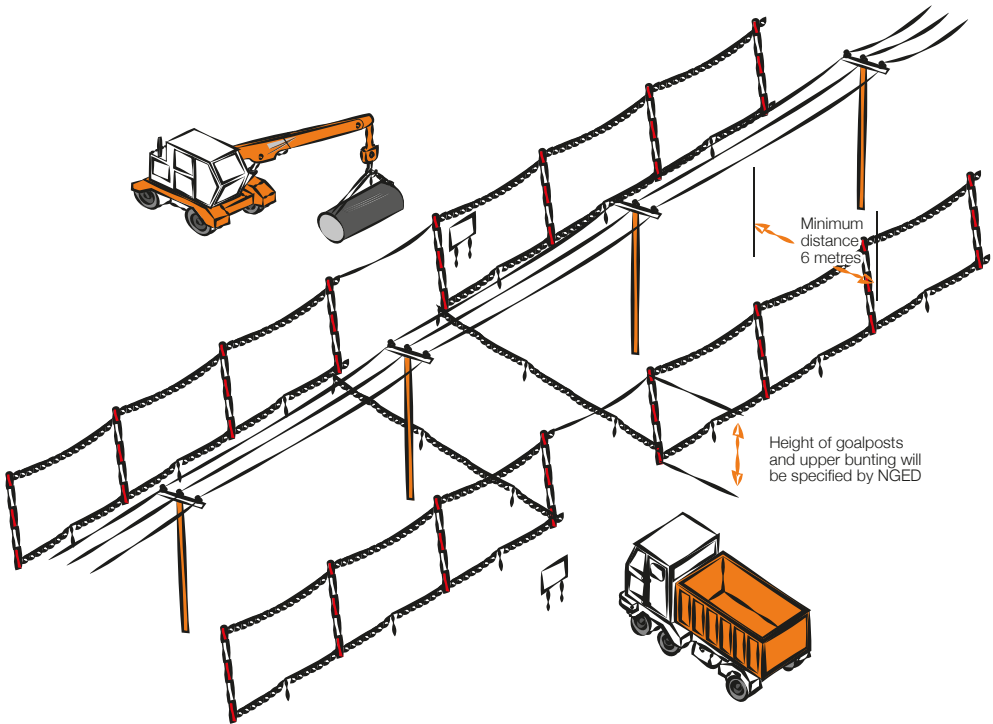
The only people qualified to work on this equipment are our operatives; who have been specifically trained and are authorised in writing to do so. Overhead lines have the advantage that, unlike underground cables, they can easily be seen.

- Always assume that our overhead lines are live unless we have informed you otherwise in writing.
- We will be able to advise you about the type and voltage of the overhead lines in question and provide you with information about the clearances that you must adhere to during your work. Please ring our regional general enquiries number for further advice.
- In some circumstances, we may be able to temporarily shroud low voltage overhead lines and services running to buildings if you need to work in the vicinity e.g. for scaffolding erection, fascia repairs and painting work on domestic properties. We don't normally charge for the shrouding of overhead lines, but please give us as much notice as possible.
- If you think that you will be working close to our overhead lines and they need shrouding – please don't start work until we have agreed what needs to be done and all safety precautions are in place.
- If you are in any doubt about whether the overhead lines in question are power or telephone (this is a very common mistake) – please ask us.
- Please note that it is not technically possible to shroud high voltage lines, so if you cannot avoid working near to our high voltage lines, contact us and we will be happy to meet with you to discuss safe alternatives.

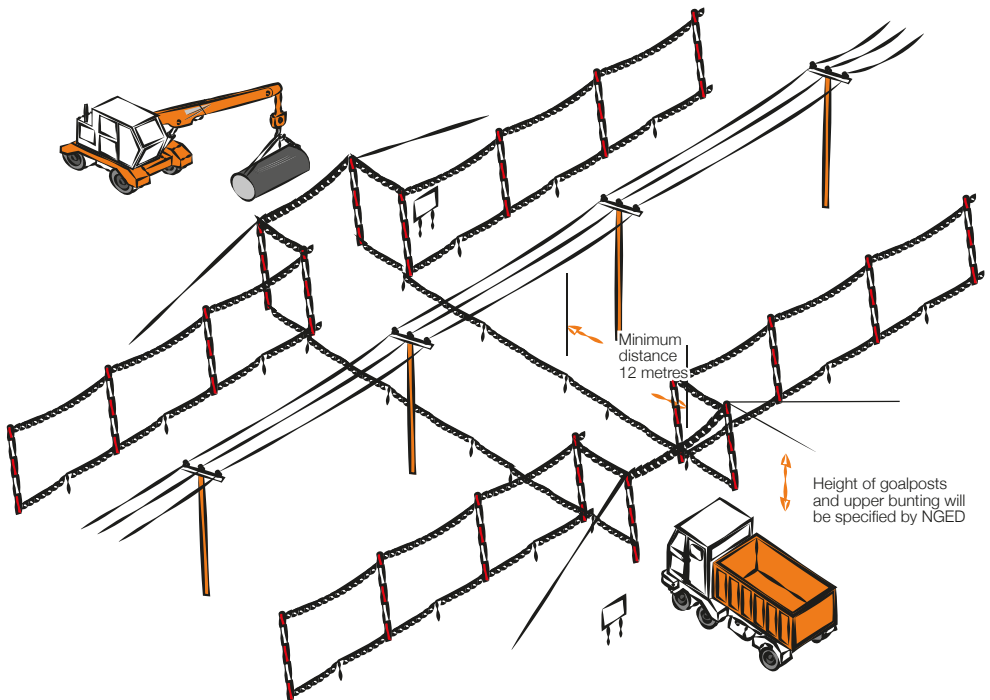
- If it is decided that work can go ahead in the vicinity of our overhead lines but there is a risk of you infringing the safety clearances from the overhead lines, you have a responsibility to erect safety barriers to segregate your works from the area around the overhead lines. The detailed requirements for these barriers are provided in the HSE document GS6 'Avoidance of Danger from Overhead Lines'. As a summary they should consist of:
 - red and white coloured posts erected at 6m intervals, with coloured bunting stretched between their tops, supplemented by low level bunting erected at 1m above ground level, supported at 3m intervals on red and white coloured posts. This is shown below.
- We are able to advise you on the height of the barriers and any additional clearances necessary if you are using large plant on your site.
- Any bunting, ropes and lanyards used should be made from an insulating material.
- These barriers should be erected parallel to the overhead line at a minimum distance of 6m horizontally from the outermost conductor of the overhead line.
- The supports may be supported by rubble or concrete filled barrels or buried directly in the ground.
- Danger notices should be fixed to all of your high level supports.
- The ground enclosed within these barriers is best regarded as "dead ground" in which all foot and vehicular traffic is forbidden, in all circumstances, for the duration of your work.



- Where it is necessary for foot and vehicular traffic to pass under the line, you will need to form a marked access way between the barriers as shown below.
- This access way should comprise of bunting erected 1m above ground, supplemented by high level “goal-posts” erected at either end.
- The goal post cross bars should be rigid, made of insulating material and positioned in a location and at a height specified by us.
- The access route should be as narrow as possible and should not normally exceed 10m in width.
- If it is necessary to make the access route wider than this, you may find it impractical to use rigid cross bars, so you may use a tensioned rope and bunting instead. If you use rope and bunting as a cross bar, you should move the entrance to the access route out to a minimum distance of 12m from the outermost conductor of the line. This is to allow for any stretching of the rope if pulled by your plant.



- If you decide to use steel wire rope to support the barrier, this must be effectively connected to earth at both ends.
- You should also install Danger Notices at all probable directions of approach and clearly display the cross bar height.
- Whatever measures you take, you should ensure that everyone working in the vicinity of overhead lines is briefed about the risks and what safety measures are in place. Do not permit anyone to carry long objects, especially scaffold poles, ladders and irrigation pipes in the vicinity of overhead lines.
- If you are working at night, or in conditions of poor visibility, you should ensure the area is well lit and that the overhead lines are clearly visible.
- You should ensure that all shrouding, barriers and signs are regularly inspected and maintained so that they remain effective.
- Overhead lines are not normally insulated and electricity at high voltages may jump, so a dangerous situation can arise just from a close approach.
- Cranes and excavators working near overhead lines are at increased risk because of the possibility of the jib/arm slewing or being raised into the overhead line, or the load swinging into the overhead line. You may therefore also need to fit plant and vehicles with restricting chains etc. to physically restrain their operation – we can advise on this if you wish.
- If you are planning to carry out tree cutting or arboriculture work in the vicinity of our overhead lines, you need to be aware that this is a complex, high risk activity and we recommend that you employ a competent tree surgeon, who complies with all of the requirements of Forestry industry Safety Accord (FISA) publication FISA 804 - Electricity at work: Forestry.



If contact is made with an overhead line

You must immediately clear the area and suspend all work within 50m of the damage because the line could still be live, or become live again. The operator of a machine that is in contact with an overhead line should:

- **If the machine is still operable and the operator is still in the cab:**
 - provided that you do not risk breaking the overhead line or dragging it to the ground, immediately lower the raised parts of the machine using only the controls in the cab and/or drive the vehicle clear of the overhead line
 - contact us immediately on our emergency number so that we can check the overhead lines
 - instruct other people in the vicinity not to approach the vehicle.
- **If the machine is not operable, cannot be driven clear of the overhead line or there is a risk that doing so will break the line or drag it to the ground:**
 - stay in the cab
 - contact your site manager or us immediately on our emergency number by radio or mobile phone or as soon as possible by any other method
 - instruct everyone outside the vehicle not to approach it
 - do not exit the cab until given confirmation by wpd personnel that it is safe to do so.
- **If the machine is inoperable or cannot be driven free and there is risk of fire or other immediate hazard:**
 - jump clear of the vehicle, avoiding simultaneous contact with any part of the machine and the ground
 - try to land with your feet as close together as possible
 - where possible, continue to move away from the vehicle jumping with both feet together until at least 15m from the vehicle. Instruct other people in the vicinity not to approach the vehicle. Contact us immediately on our emergency number
 - do not return to the vehicle until given confirmation by wpd personnel that it is safe to do so.

Whatever the circumstances please contact us on our emergency number immediately and tell us what has happened. Please be ready to provide us with a contact telephone number and an accurate location or set of directions – this will help us in getting our staff to site quickly to minimise any danger and lessen any disruption to your work.

CALL 105



Please report any damage or contact no matter how minor they may seem to you at the time. The damage may not cause a serious problem at the time of damage, but it could fail later, causing danger to our staff and members of the public, disruption to our customers' supplies, and – if we trace the damage back to you – a large repair bill.

More information

For your information, we are legally obliged to report all contact with our system to the Health and Safety Executive (HSE), and, if you are an employer, you may be obliged to report incidents involving your staff or contractors to the HSE.

Even if no one is hurt, you could be prosecuted for failing to report such an incident.

More detailed general information on this subject is available in the following publications from the HSE:

- HSG(47) – Avoiding Danger from Underground Services
- GS6 – Avoidance of Danger from Overhead Lines
- along with Forestry Industry Safety Accord (FISA) publication FISA 804 – Electricity at Work: Forestry

If you require more site-specific information relating to our equipment at your location please contact us on our general enquiry number:

Our general enquiry number is:

0800 096 3080

National Grid Electricity Distribution plc
Avonbank
Feeder Road
Bristol BS2 0TB
United Kingdom

[nationalgrid.co.uk](https://www.nationalgrid.co.uk)

Finally

Please, always remember that electricity cables and overhead lines can be very dangerous – the general rule is **stay away and stay safe.**

nationalgrid

Look out, look up!

National Grid Electricity Distribution's
guide to the safe use of mechanical
plant in the vicinity of electricity
overhead lines



nationalgrid.co.uk

CALL 105



The safe use of mechanical plant in the vicinity of electricity overhead lines

Every year in the UK on average, two people are killed and many more are injured when mechanical plant and machinery comes into contact or close proximity to overhead electricity lines.

This booklet has been produced for anyone who uses mobile plant, (such as Hiabs, MEWPs, tipper lorries and trailers, grab lorries, concrete conveyors and excavators) for short duration work and provides general guidance on how to avoid becoming part of these statistics.

1 Before starting work

Overhead lines have the advantage that they can easily be seen, so before you set up your vehicle or plant always:

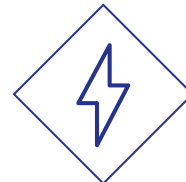
Stop and look up!



If you are working at night, or in conditions of poor visibility, you should use spotlights or a torch to carefully check that there are no overhead lines within your vehicle's reach.



If you are in any doubt about whether the lines in question are power or telephone (this is a very common mistake) – always assume that they are power lines and are live.



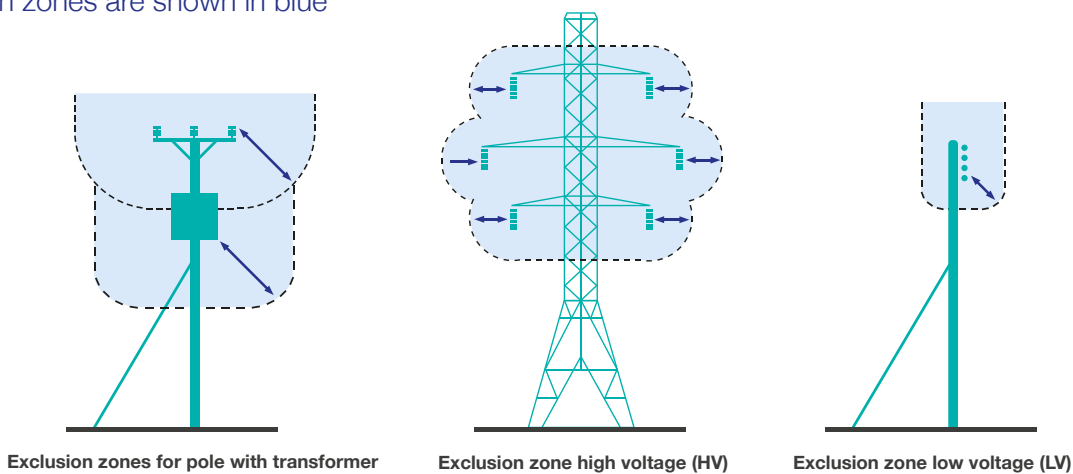
It is not normally practical for electricity companies to shroud high voltage conductors and even when low voltage conductors are shrouded, the shrouding is not designed to protect against contact by mechanical plant – again, always assume the lines are live.

2 Exclusion zones

Overhead power lines are not normally insulated and so any contact can result in serious or fatal injuries. Electricity at high voltages can also jump gaps with no warning whatsoever, so it is also dangerous to let your plant approach too close to a line. The distance that electricity can jump depends on the voltage of the line.

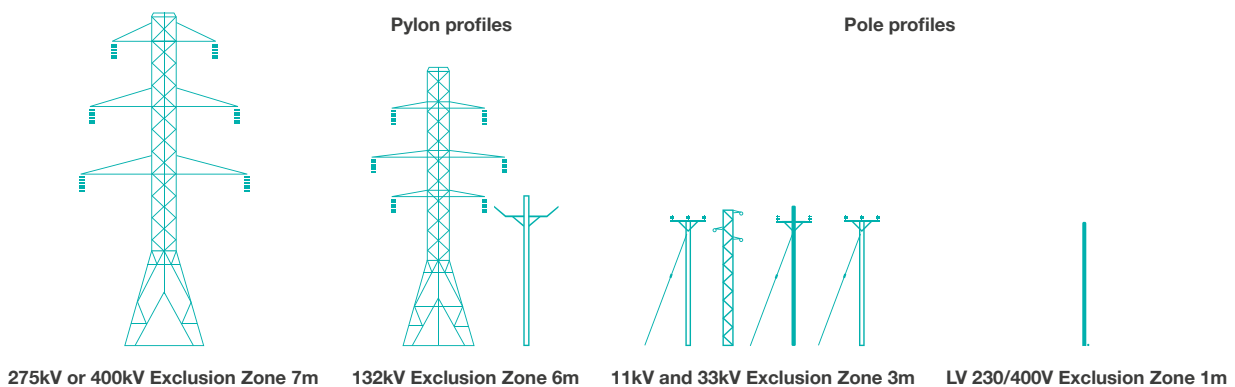
The higher the voltage, the further you must stay away from the line and any other equipment that may be fitted to the pole or pylon. This distance is called the **exclusion zone**. Examples of this are shown highlighted in the diagram below.

Exclusion zones are shown in blue



You must not allow any part of your plant to enter the **exclusion zone**. The diagram below shows typical types of overhead lines and provides a guide to help

you assess the line voltage of lines on wooden poles or steel pylons. The minimum **exclusion zone distance** is shown for each example.



Please note that these are absolute minimum distances that should under no circumstances be infringed. If you do – it could prove fatal. As well as staying away from the lines or equipment, you should also stay at least

600mm away from any part of poles, pylons and stay wires. Please remember that is for guidance only, and if you are in any doubt, please call us for advice before setting up your plant or starting work.

3 Stand off distances

If there are power lines in the vicinity of your work the best way to make sure you stay out of the **exclusion zone** is to position your vehicle at a **safe stand off distance** so that, even when fully extended, no part of it can accidentally reach inside the **exclusion zone**.

This **safe stand off distance** can be calculated by adding the **exclusion zone** distance for the appropriate voltage of the line to the **maximum operating reach** of your vehicle.

This is shown in the diagram opposite.

If you position your vehicle outside of the **safe stand off distance**, there is no risk of accidental contact with the lines and no danger of electricity jumping from the line to your vehicle.

If you cannot achieve a **safe stand off distance**, consider moving your vehicle to a safer location.

It may make your job a bit more difficult, but if it means you stay away from the **exclusion zone** - it will be safer.

The next best option would be to consider using smaller plant with a **maximum operating reach** that cannot enter the **exclusion zone**.

You may not be able to achieve either of these options, so, as a last resort, if you cannot avoid operating large items of plant in the vicinity of lines, you must make sure that the plant is fitted with restraints to ensure that the **exclusion zone** cannot be entered.

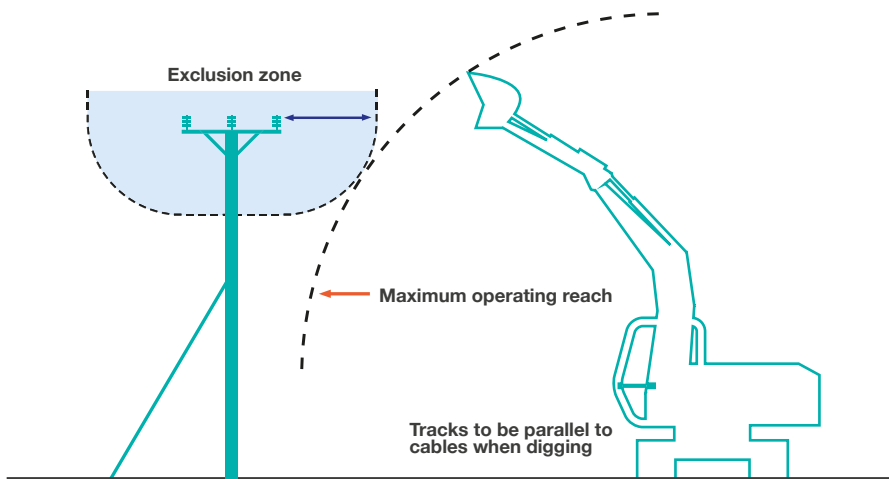
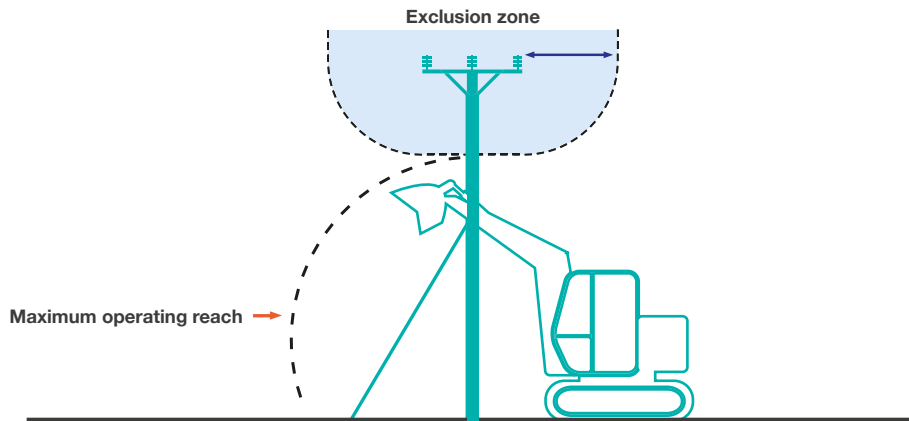
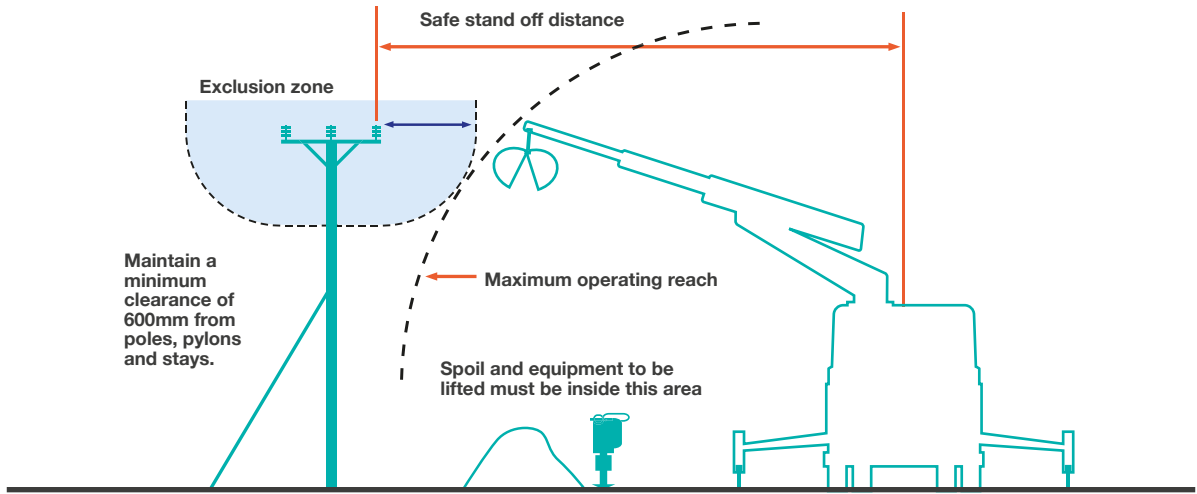
These restraints may be electrical or hydraulic systems fitted to the plant, or mechanical devices such as chains.

Please seek advice from the plant manufacturer for more information on choices available for your particular item of plant. If you are using a mechanical excavator to dig parallel to the line, it is good practice to position the excavator with the tracks or wheels parallel to the line, so as you move along the excavation the safe stand off distance is easily maintained.

Care must also be taken to avoid non mechanical equipment, (e.g. scaffold poles, ladders and long loads such as lengths of steel or timber) from entering the exclusion zone.

Always maintain at least 600mm clearance from your plant to any of our poles, stay wires or pylons. Any contact with these by your plant could cause the line to break and fall to the ground.





4 Emergency procedures

If contact is made with an overhead line, you must immediately clear the area and suspend all work within 50m of the damage because the line could still be live, or become live again.

The operator of a machine that is in contact with an overhead line should take the following steps:

If the machine is still operable:

- lower any raised parts that are controlled from the driving position and/or drive the vehicle clear of the line, as long as neither of these actions risk breaking the line or dragging it to the ground.

If the machine is not operable or cannot be driven clear of the line:

- stay in the cab
- contact your site manager or us immediately by radio or mobile phone or as soon as possible by any other method
- instruct everyone outside the vehicle not to approach it
- do not exit the cab until given confirmation by National Grid Electricity Distribution personnel that it is safe to do so.

If the machine is inoperable or cannot be driven free and there is risk of fire or other immediate hazard:

- jump clear of the vehicle, avoiding simultaneous contact with any part of the machine and the ground
- try to land with your feet as close together as possible
- where possible, continue to move away from the vehicle using “bunny hops” with your feet together until at least 15m from the vehicle
- instruct other people in the vicinity not to approach the vehicle
- do not return to the vehicle until given confirmation by National Grid Electricity Distribution personnel that it is safe to do so.

Whatever the circumstances please contact us on our emergency number immediately and tell us what has happened.

Please be ready to provide us with a contact telephone number and an accurate location or set of directions – this will help us in getting our staff to site quickly to minimise any danger and to reduce any disruption to your work.

**Our emergency number is:
105 or 0800 6783 105**

Please report any damage or contact no matter how minor they may seem to you at the time.

Whilst the damage may not cause a serious problem at the time of contact it could fail later, causing danger to our staff and members of the public, disruption to our customer’s supplies, and – if we trace the damage back to you – a larger repair bill!

CALL 105



5 More information

Proximity Warning Systems (such as Wire Watcher – see wirewatcher.co.uk for information) may be fitted to your vehicle. Never turn these devices off or disable them in any way.

Take note of any warnings these proximity warning systems may provide but do not use the presence of such devices as a reason not to follow the advice provided in this leaflet.

For your information, we are legally obliged to report all contact with our system to the Department of Trade and Industry (DTI), and, if you are an employer, you may be obliged to report incidents involving your staff or contractors to the Health & Safety Executive (HSE). Even if no one is hurt, you could still find yourself being prosecuted for causing a dangerous occurrence.

6 Further reading

For advice related to signing and guarding at longer term work sites please also refer to National Grid Electricity Distribution booklet “Avoidance of Danger from Electricity Overhead Lines and Underground Cables”. More detailed information is also published in the following documents available from the HSE.

GS6 – Avoidance of Danger from Overhead Lines.

HS(G) 47 – Avoiding Danger from Underground Services.

Along with Forestry Industry Safety Accord (FISA) publication **FISA 804 - Electricity at Work: Forestry.**



If you require more site-specific information relating to our equipment at your location please contact us on the relevant **general enquiries number:**

0800 096 3080

Finally... please, always remember that electricity overhead lines can be very dangerous – **the general rule is stay away and stay safe!**

**Company Address**

Wales and West Utilities Ltd,
Wales and West House,
Spooner Close, Celtic,
Springs, Coedkernew,
Newport, NP10 8FZ

Our Ref: 30659000 U23-9642

Tuesday, 29 August 2023

Thank you for contacting us regarding Wales & West Utilities equipment at the above site.

I enclose an extract from our mains records of the area covered by your proposals together with a comprehensive list of General Conditions for your guidance. This information is given as a general guide and its accuracy cannot be guaranteed. Service pipes, valves, syphons, stub connections, etc., are not shown but their presence should be anticipated.

No liability of any kind whatsoever is accepted by Wales and West Utilities (WWU), its agents or servants for any error or omission. Please note that all WWU equipment on site should be assumed to be LIVE until proven otherwise.

Safe digging practices, in accordance with HS(G)47, Avoiding Danger from underground services must be used to verify and establish the actual position of mains, pipes, services and other apparatus on site before any mechanical plant is used. It is your responsibility to ensure that this information is provided to all persons (either direct labour or contractors) working for you on or near gas apparatus. Safe working procedures should be defined and practiced.

WWU reserves its position completely to enforce the terms of any existing easement against the landowner, even if this results in any planning permission granted not being able to be fully implemented.

You must not build over any of our plant or enclose our apparatus.

Wales & West Utilities have no planning objections to these proposals, although it should be noted that Wales & West's apparatus is held pursuant to easements and it has other private law rights in relation to the use of the land in the vicinity of its apparatus. Wales & West's private law land rights are not material planning considerations and therefore no comment is made in relation to those rights and they have no impact on whether or not planning permission should be granted, or whether, if permission is granted, it can lawfully be implemented. It should also be noted that Wales & West's apparatus may be at risk during construction works and should the planning application be approved, then we require the promoter of these works to contact us directly to discuss our requirements in detail. Should diversion works be required these will be fully chargeable.

Where diversions to WWU apparatus are needed to allow change to occur on site, the cost of these alterations may be charged to the persons responsible for the works.

If you have requested a new connection the WWU connections team will where necessary prepare detailed proposals and provide a quotation for any necessary alterations and/or development of our equipment on the site.

If you require advice in connection with your proposals please contact the relevant number below.

Yours sincerely,

**Company Address**

Wales and West Utilities Ltd,
Wales and West House,
Spoooner Close, Celtic,
Springs, Coedkernew,
Newport, NP10 8FZ

WWU Dig Team

Gas Emergency Number:

In an emergency call 0800 111 999, 24 hours a day.

Mapping Enquiries:

If you have an enquiry relating to this letter or the attached map plan, please contact us using the following information:

Telephone 02920 278912
Email dig@wwutilities.co.uk

General Enquiries:

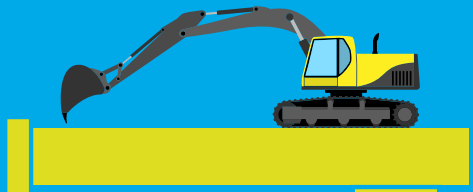
If you have a general enquiry, please call us on the following number

All areas 0800 912 29 99

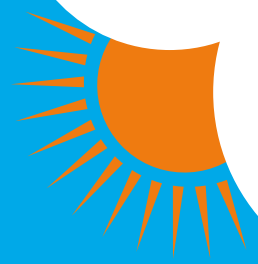
LinesearchbeforeUdig:

If you have an enquiry relating to the use of the LinesearchbeforeUdig website please contact LinesearchbeforeUdig using the following information:

Telephone 0845 437 7365
Email enquiries@linesearchbeforeudig.co.uk
Website www.linesearchbeforeudig.co.uk



We're here to
help



Dial
before
you dig

We need
10 days'
notice

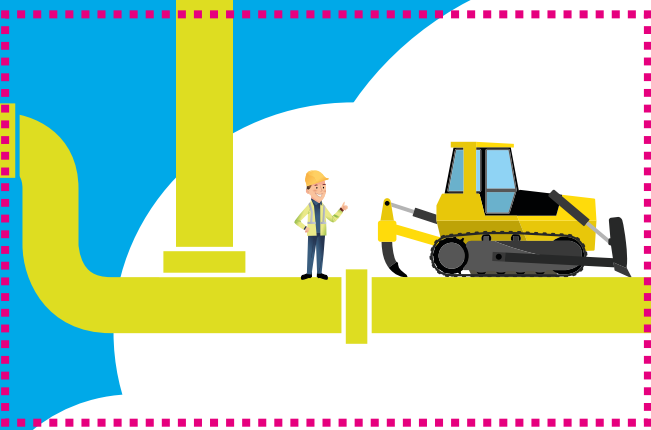
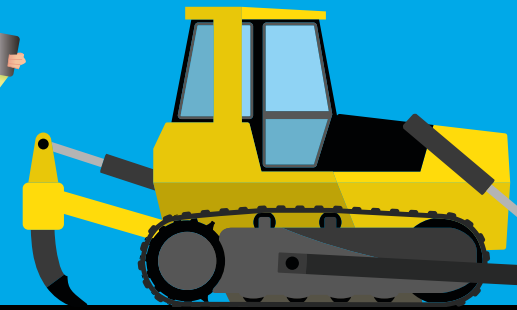
Every day, underground gas pipes get damaged by people digging without knowing what's below. This can be catastrophic. It might cause serious injury to you and others around you. The costs of repair, fines and fees can be huge. Your project will be delayed and your reputation damaged.

We have designed this leaflet to help you dig safely. And the first thing to do – long before you start work – is call us.

What's the number?
029 2027 8912

? Need help or advice?
Call our **Plant Protection** team on
029 2027 8912
or email **dig@wwutilities.co.uk**

! Smell gas?
Call the **Gas Emergency Service** on
0800 111 999.



CARD POSITION (DO NOT PRINT)



- dig@wwutilities.co.uk
- 029 2027 8912
- www.wwutilities.co.uk
- facebook.com/wwutilities
- @WWUtilities



Dial
Investigate
Go ahead

YOUR GAS EMERGENCY
AND PIPELINE SERVICE



Can you DIG it?

We bring the gas to homes and businesses across Wales and the south west of England. We invest money, time and effort every year to make sure our pipelines are protected – but the biggest danger to our network is you.

D is for Dial

Digging can be dangerous. Hit a gas pipe and you might cause a gas leak, a fire or explosion.

So phone us first on **029 2027 8912** or email **dig@wwutilities.co.uk**

- You can find out where our pipes are.
- You need to give us 10 working days' notice before you start working.



I is for Investigate

It's the only way to stay safe

- Before you start work, you must get a copy of our up-to-date gas plans and General Conditions and keep them with you on site.
- Use our online mapping service to find the mains pipes under your land.
- Working near a medium-, or intermediate- or high-pressure gas pipe? You might need a site visit – call us so we can arrange it.
- Plan ahead – we need at least 10 days' notice for a site visit.
- You'll also need our publication 'SSW22 Safe working in the vicinity of high-pressure pipelines and associated installations'.
- Remember, you can't work on a Wales & West Utilities wayleave or easement (land which we have rights over to maintain our gas network) without written permission.
- And you can't work near or move heavy equipment over any gas pipeline until all our conditions have been met and we agree your method of working.
- Watch the video on our website to find out more.



G is for Go ahead

- Make sure you have our up-to-date gas plans on site.
- Need extra advice? Call our Plant Protection team on **029 2027 8912** or email **dig@wwutilities.co.uk**
- Use cable- and pipe-locating devices.
- Use safe digging practices, taking every precaution to avoid damaging gas pipes, damaging yourself and damaging your bank balance. You will be billed for any costs if something goes wrong.
- If in doubt, phone us again. We're happy to help.

We need
10 days'
notice



Smell gas?

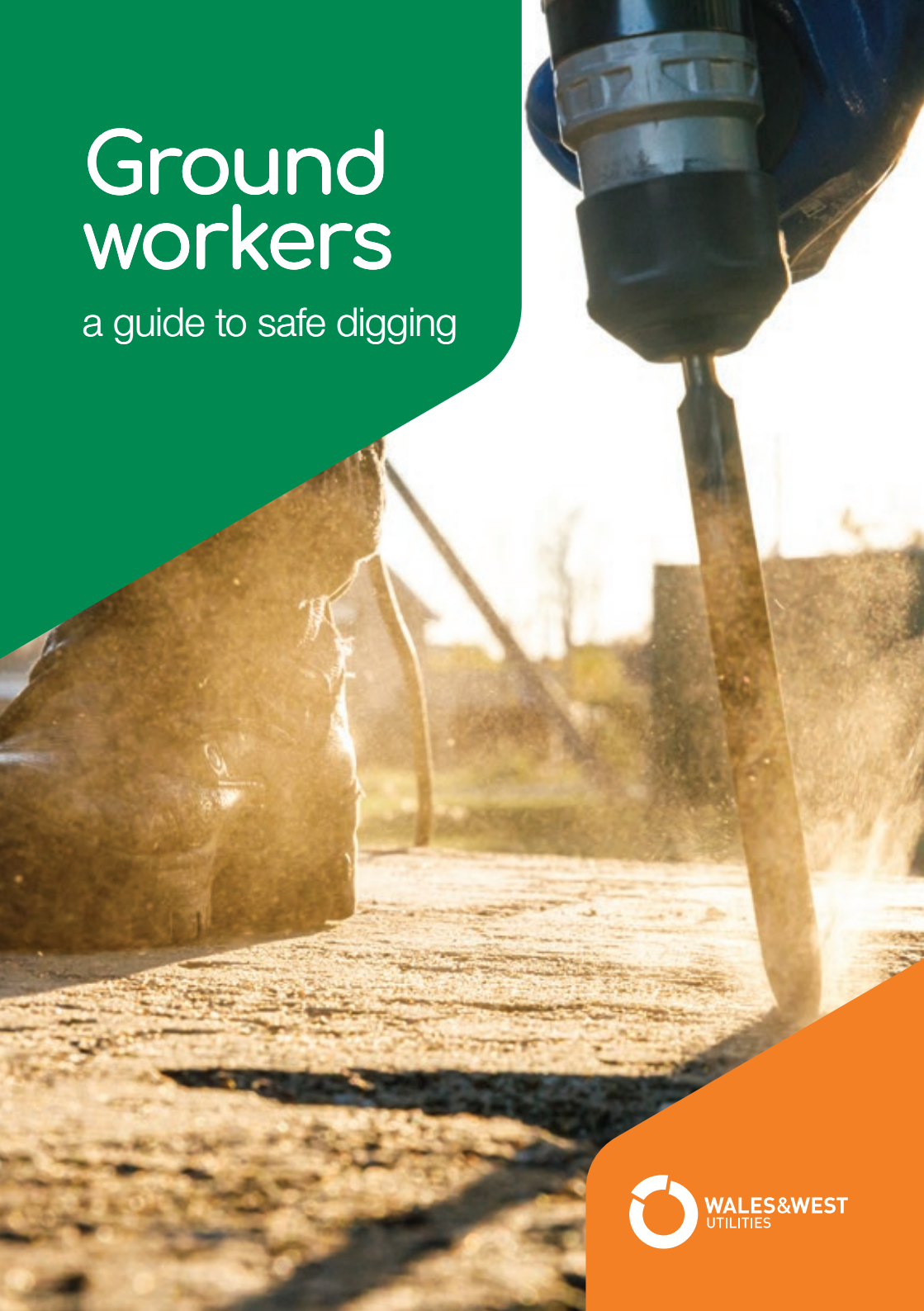
Our Gas Emergency Service is on call 24 hours a day, seven days a week, 365 days a year.

If you cause a gas leak, or think the network might be leaking, call the Gas Emergency Service immediately on **0800 111 999**.

- Get everyone away from the leak.
- Ask everyone in nearby buildings to leave until we're sure it's safe.
- Put out all naked flames and other sources of ignition and make sure no one smokes within 15 metres of the leak.
- Don't try to fix the leak by filling the hole, as gas may enter buildings.
- Don't try to operate any valves.
- Don't let anyone go near the leak.
- Help our engineers, the police or fire services if they ask.

Ground workers

a guide to safe digging



WALES&WEST
UTILITIES

Gas plans

You need to obtain gas plans before any proposed excavations.



Any plans supplied or marked up by Wales & West Utilities will show the approximate location of our apparatus. The information is provided as a general guide only, its accuracy cannot be guaranteed and is given without obligation or warranty.

Service pipes are not shown but their presence should be anticipated. No liability whatsoever is accepted by us, our agents or servants for any error, omission, discrepancy or deviation.

Plans on site should be current, printed in colour and no older than 28 days from their issue date.



•Starting works

The following work methods will **not** normally be permitted within the distance limits shown (relative to the established pipe position). Any variances must have our consent before work starts:

- mechanical excavation 3m (1m for low-pressure mains)
- hydraulic testing 8m
- piling/pile removing/boring 15m
- welding or other hot works 15m
- directional drill operations 15m
- explosives 250m

You must consult us before doing any excavations within 10m of any above gas installations or pipes.

No excavations can start within 50m of a high-pressure pipeline unless it has been located by tracing and its precise route identified by us.

You must comply with all conditions specified by us before starting any work near – or moving heavy plant or equipment over – any pipeline or apparatus.

Any damage to our apparatus near your works could have serious consequences. In view of this and for safety, there should be a site meeting with our representatives and any other interested parties before you do any work near a medium, intermediate or high-pressure main.

The site meeting should cover the suggested works programme and pipeline safety. It must be held well before operations start and at least 10 days' notice is required before carrying out any work.

You can find more guidance in Avoiding Danger from Underground Services, document HSG47 on the Health and Safety Executive website.

Building proximities

There are minimum proximity distances for buildings from our mains depending on their operating pressure and pipe material. Contact us to confirm these before starting building works.

For high pressure pipelines, you must contact the Health and Safety Executive and local authority planning team for guidance on their Land Use Planning Zones as these may be in addition to our proximity distances.

Permanent or temporary buildings must not be constructed over our pipes or within the minimum building proximities. Where there is an easement – a legal agreement for our mains to be on private land – there may be further restrictions to working near our pipes.



Protection

Backfill material used near our apparatus must be soft fill or sand containing no stones, bricks or lumps of concrete etc, placed to a 150mm minimum around the mains and be well compacted by hand.

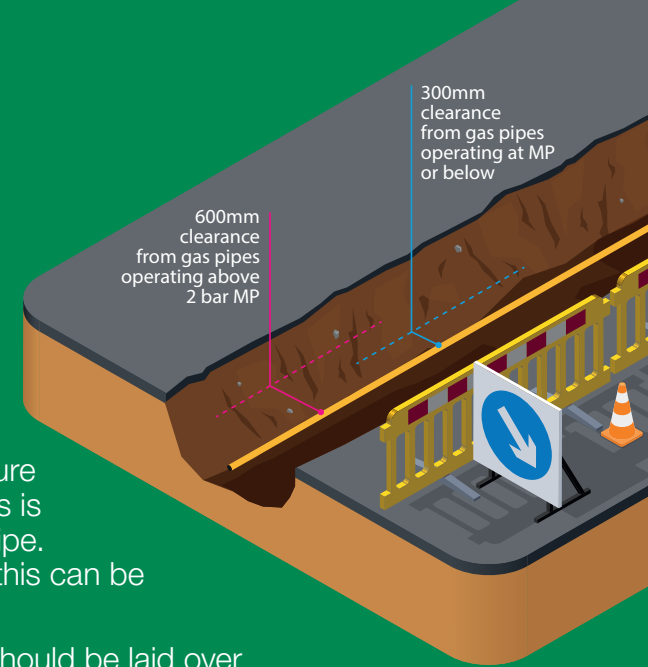
Damage to coatings

When a gas pipe is coated with special wrapping and is damaged, even to a minor extent, you must notify us so repairs can be made, free of charge, to prevent corrosion and leakage.

Pipeline proximity

There should be a minimum **600mm** clearance between new apparatus being installed and a main operating above 2 bar medium pressure (MP), whether the apparatus is parallel to or crossing the pipe. For mains at MP or below, this can be reduced to **300mm**.

Importantly, no apparatus should be laid over and along the line of a gas pipe.



Cathodic protection

If you are installing cathodically-protected apparatus, we will need to do interaction tests to determine if our system is affected. The cost of any mutually agreed remedial action will be charged to the authority installing the new apparatus. If any bond wires or test leads are damaged or found in poor condition, you must notify us before backfilling so a repair can be made.

Deep excavations

Any deep excavations (1.5m or more) must be done by following the Model Consultative Procedure for Pipeline Construction involving Deep Excavations.

As this may need the diversion of our apparatus before your works start, you must contact us with detailed plans and cross-sections so we can determine if our pipes will be affected.

Renewable energy installations

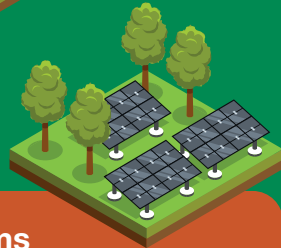
Wind turbines

You must tell us about any planned wind turbine development near an above 2 bar gas main to ensure it does not impact the pipeline's safe operation. Industry guidance states a wind turbine must be sited no closer than 1.5 times the proposed height of its mast away from the nearest edge of the pipeline.



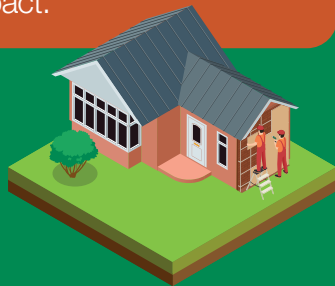
Solar farms

If a solar farm is being considered near our pipelines, you must contact us.



External wall insulation

You must also contact us about any external wall insulation scheme near our apparatus to ensure there is no impact.



Demolition

Live gas services must be disconnected before demolishing a property. Contact us to arrange a check for any live gas services.

Tree planting

We can provide information about tree-planting and you must contact us before starting any planting above or near our apparatus.

Leakage from gas mains or services

In the event of a leak, follow the instructions below – **DO NOT** attempt to seal the leak. If in doubt, **contact us**.

If damage or leakage is caused, or a gas escape is smelt or suspected, take action at once:

- Evacuate everyone from the immediate vicinity.
- Call the 24hr Gas Emergency Service on **0800 111 999**.
- Prevent any approach by the public, prohibit smoking and extinguish all naked flames or other ignition sources for at least **15m from the leakage**, and do not operate any electrical switches.
- Assist gas personnel, police and/or fire services, as needed.



Site responsibilities

All repair costs incurred by us for direct or consequential damage to our pipelines will be chargeable. We reserve the right to divert any affected apparatus or specify suitable protection for it if proved necessary during site works – this cost will also be chargeable.

These guidelines only apply to our apparatus and pipes. If there are other gas transporters in the area, make sure you contact them and comply with their requirements.

Need help locating our apparatus?

Contact our Plant Protection team on **02920 278912** or **dig@wwutilities.co.uk**.



 wwutilities.co.uk

 [@WWUtilities](https://twitter.com/WWUtilities)

 [wwutilities](https://www.facebook.com/wwutilities)

 [@WWUtilities](https://www.instagram.com/WWUtilities)

Home owners

a guide to safe digging



WALES&WEST
UTILITIES

Before starting works

Check you have up to date gas plans on site - they should be printed in colour and no older than 28 days from their issue date.

Any plans supplied or marked up by Wales & West Utilities will show the approximate location of our apparatus. The information is provided as a general guide only, its accuracy cannot be guaranteed and is given without obligation or warranty.



Individual gas pipes to houses are not shown but their presence should be anticipated. They usually take the shortest route to the larger pipe providing the supply. Look for any visual signs of gas presence, like a meter box or above ground entry point.

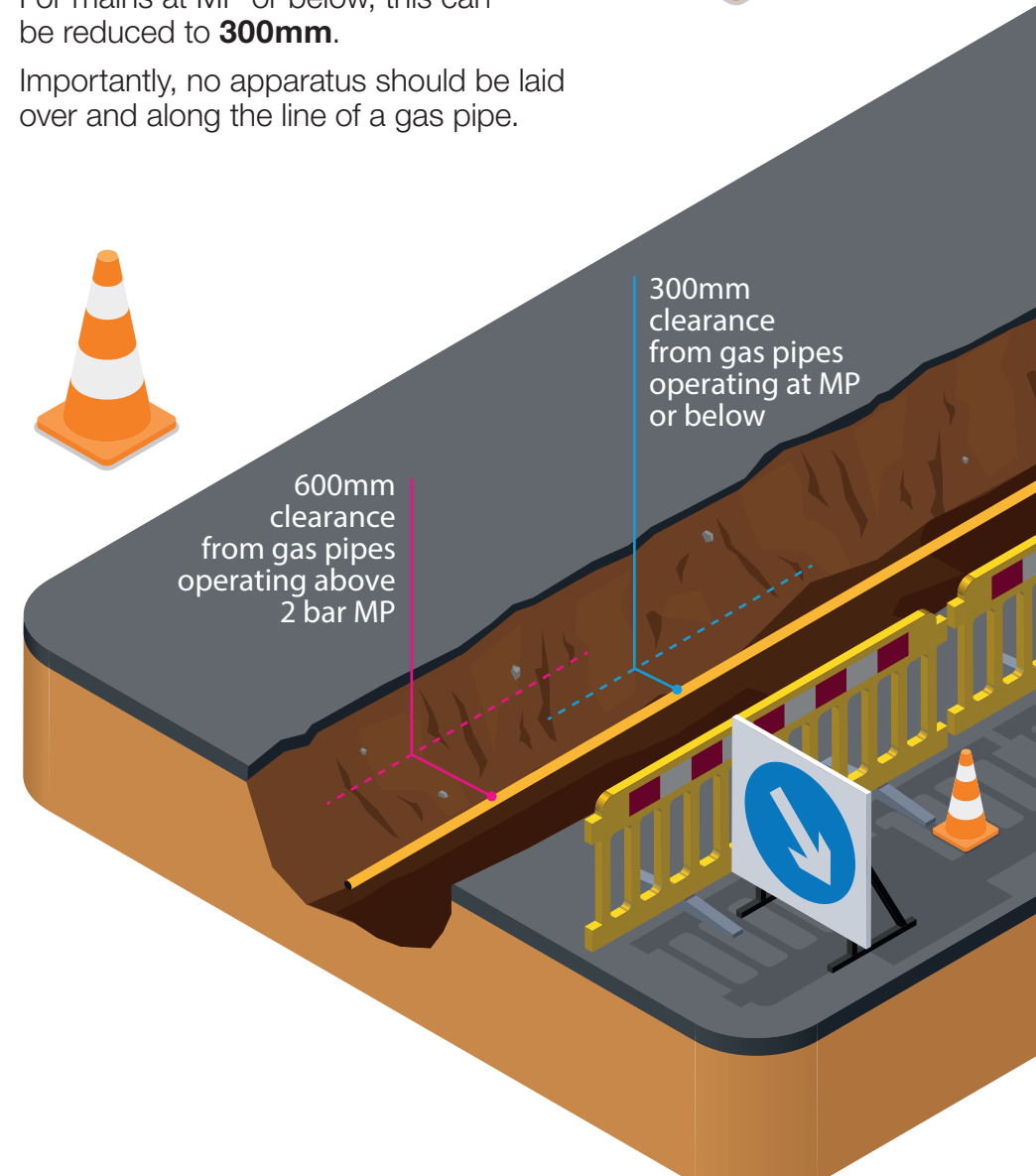
Any damage to our apparatus near your works could have serious consequences. In view of this and for safety, there should be a site meeting with our representatives and any other interested parties before you do any work near a medium, intermediate or high-pressure main.

The site meeting should cover the suggested works programme and pipeline safety. It must be held well before operations start and at least 10 days' notice is required before carrying out any work.

Clearances

There should be a minimum **600mm** clearance between new apparatus being installed and a main operating above 2 bar medium pressure (MP), whether the apparatus is parallel to or crossing the pipe. For mains at MP or below, this can be reduced to **300mm**.

Importantly, no apparatus should be laid over and along the line of a gas pipe.



Building proximities

There are minimum proximity distances for buildings from our mains depending on their operating pressure and pipe material. Contact us to confirm these before starting building works.

For high pressure pipelines, you must get in touch with the Health and Safety Executive and local authority planning team for guidance on their Land Use Planning Zones as these may be in addition to our proximity distances.



Permanent or temporary buildings must not be constructed over our pipes or within the minimum building proximities. Where there is an easement – a legal agreement for our mains to be on private land – there may be further restrictions to working near our pipes.

Protection

Backfill material used near our apparatus must be soft fill or sand containing no stones, bricks or lumps of concrete etc, placed to a 150mm minimum around the pipe and be well compacted by hand.



Demolition

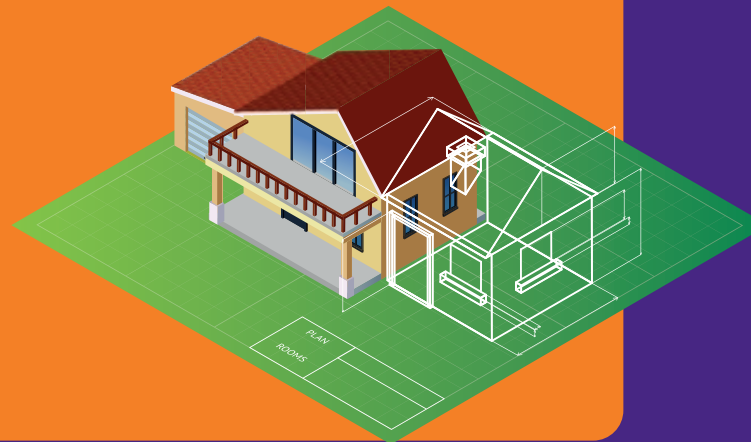
Live gas services must be disconnected before demolishing a property. Contact us to arrange a check for any live gas services.



Home improvements

If you are planning any home improvements, such as an extension or conservatory, fencing, decking, landscaping or even installing a new pond, remember your gas supply could run below where you are working. Before you start, make sure you have a copy of our plans and have visited the Dial Before You DIG section on our website for safety advice.

Be careful when considering planting trees. Contact us before any tree planting above or near our apparatus as roots can potentially damage pipes and restrict future maintenance.





Site responsibilities

All repair costs incurred by us for direct or consequential damage to our pipelines will be chargeable. We reserve the right to divert any affected apparatus or specify suitable protection for it if proved necessary during site works – this cost will also be chargeable.

These guidelines only apply to our apparatus and pipes. If there are other gas transporters in the area, make sure you contact them and comply with their requirements.

Leakage from gas pipes

In the event of a leak, follow the instructions below – **DO NOT** attempt to seal the leak. If in doubt, **contact us**.



If damage or leakage is caused, or a gas escape is smelt or suspected, take action at once:

- Evacuate everyone from the immediate vicinity.
- Call the 24hr Gas Emergency Service on **0800 111 999**.
- Prevent any approach by the public, prohibit smoking and extinguish all naked flames or other ignition sources for at least **15m from the leakage**, and do not operate any electrical switches.
- Assist gas personnel, police and/or fire services, as needed.

For more information...

call our Plant Protection team on **02920 278912**
or **dig@wwutilities.co.uk**. You can also visit
the Dial Before You DIG section on our website
www.wwutilities.co.uk

You can find more guidance in Avoiding Danger
from Underground Services, document HSG47
on the Health and Safety Executive website.



wwutilities.co.uk



@WWUtilities



wwutilities



@WWUtilities

GTC Apparatus Not Found In Search Area

Our Plant Enquiry Service Ref: 3656174

Your Enquiry Ref: U23-9642

Thank you for your enquiry concerning apparatus in the vicinity of your proposed work. GTC can confirm that we have no apparatus in the vicinity but please note that other asset owners may have and ensure all utility owners have been consulted. For your records, the search area is shown in the attached map.

Please note our assets now include those owned and operated by:

- GTC Pipelines Limited
- Independent Pipelines Limited
- Quadrant Pipelines Limited
- Electricity Network Company Limited
- Independent Power Networks Limited
- Independent Water Networks Limited
- Open Fibre Networks Limited
- Independent Community Heating Limited

If you have any queries or require any further information please do not hesitate to contact us.

Your sincerely,

GTC Plant Enquiry Service.

GTC
Synergy House
Woolpit Business Park
Woolpit
Bury St Edmunds
Suffolk, IP30 9UP
Tel: 01359 240363
plant.enquiries@gtc-uk.co.uk

NOTE:

This E-Mail originates from GTC, Synergy House, Woolpit Business Park, Woolpit, Bury St Edmunds, Suffolk, IP30 9UP
VAT Number: GB688 8971 40. Registered No: 029431.

DISCLAIMER

The information in this E-Mail and in any attachments is confidential and may be privileged. If you are not the intended recipient, please destroy this message, delete any copies held on your system and notify the sender immediately. You should not retain, copy or use this E-Mail for any purpose, nor disclose all or any part of its content to any other person. Whilst we run antivirus software on Internet E-Mails, we are not liable for any loss or damage. The recipient is advised to run their own up to date antivirus software.

Thank you

Disclaimer

Disclaimer

This Desktop Utility Search has been compiled with information provided by Statutory Utility Providers. Whilst every effort has been made to ensure accuracy and completion with the information

South West Surveys can take no responsibility for erroneous or missing record data which has been provided from any of the Statutory Utility Providers. As the nature of the information provided is indicative, not accurate, we must therefore recommend a full Underground Utility Survey before any groundwork or construction commences.

We cannot guarantee that all possible searches have been carried out and will take no responsibility for any damages done to any apparatus, due to missing searches, which may not have been conducted or carried out within this Desktop Utility Search.

South West Surveys

28 Rudgeway Park, Rudgeway,
South Gloucestershire,
BS35 3R