

Est. 1991



**CASTLE & PRYOR**

Measured By Performance

**March 2026**

Free cable charger to the first 5 people to reply to this email and send us their name and address.





## FOX CLAIMING HIS PATCH

It won't be quite as relaxing when we give his bench a little....trim!

**0800 163 382**

We were about to start some more structural alterations on the Southsea Coastal Scheme when the local wildlife decided to lay down on the job. 🦊🦊

He seemed quite content to lay there in the sun, so we found work elsewhere until he moved on.

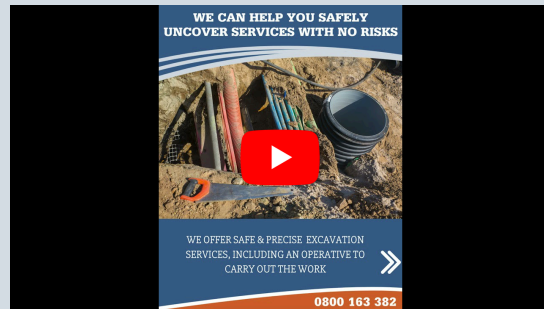
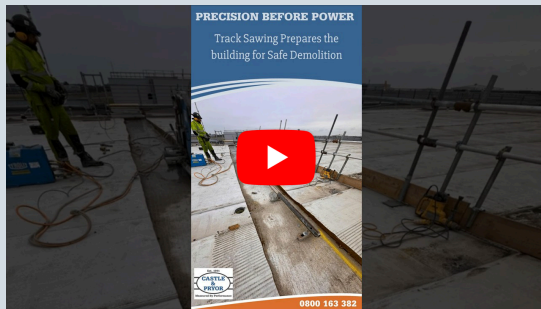
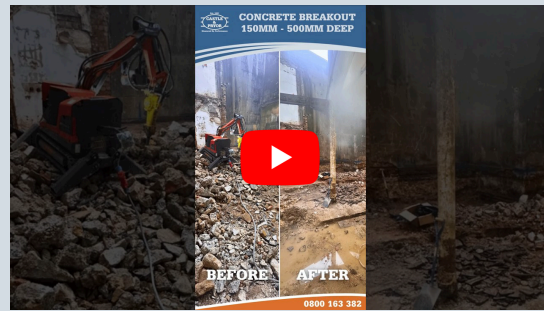
Thought about asking him to put on some PPE but thought better of it. 😊

**Concrete Cutting Services**

**MAIN STREAM CONSTRUCTION SERVICES**

**INFRASTRUCTURE/AVIATION SERVICES**

# NEW VIDEOS - JUST RELEASED



## RECENT SOCIAL MEDIA POSTS (Click to view more details)

### YOUR CHOSEN SHOP FIT OUT PARTNER

- Forming Openings**  
For doors & windows, lift shafts & staircases
- Forming Chases**  
For M&E dust and HAV free
- Vibration Reducing Techniques**  
To minimise noise & disturbance
- Fume free machinery**  
Electric or battery powered machinery providing fume free operation

0800 163 382

### DIAMOND DRILLING, CONCRETE CUTTING, INFRASTRUCTURE & MAINTENANCE SPECIALISTS

- More than 35 years experience
- Accredited professional team
- Client focused approach
- 100% money back guarantee



0800 163 382

## DATA CENTRE INFRASTRUCTURE PARTNERS



Chase forming for Data Centre services



Trench Forming to accept power, data, drainage and air-conditioning services



Fixing and Anchor Load Testing



Safe Vacuum Excavation to locate existing services

0800 163 382



## Floor Sawing 170LM x 150mm deep



0800 163 382

## OUR CORE VALUES



### CUSTOMER FOCUSED

We put our customers first and strive to exceed their expectations.



### DEPENDABLE

We create an environment where our customers can entrust us with their needs, confident these will be fulfilled.



### COLLABORATION

We aim to become an integrated part of your organisation and not just another supplier.



### INTEGRITY

We demonstrate honesty, transparency, openness and ethical behaviour in all our actions and decisions.



### QUALITY

We will not compromise on quality, it is at the core of everything we do, from initial enquiry to delivery.



### PEOPLE FIRST

We encourage, support and provide opportunities for the development of our employees allowing their potential and ambitions to be fulfilled.



View Our Brochure  
**MAINSTREAM  
 CONSTRUCTION  
 SERVICES**



View Our Brochure  
**INFRASTRUCTURE/  
 AVIATION  
 SERVICES**

**View Here**

**View Here**

Est. 1991

**CASTLE & PRYOR**

Measured By Performance

- History
- Mission
- Vision
- Values

**LEARN MORE** >>

**STAY UPDATED AND JOIN OUR LINKEDIN COMMUNITY.**

**JOIN NOW**

Est. 1991

**CASTLE & PRYOR**

Measured By Performance

**GET A QUOTE**

**Not already a subscriber?**  
**JOIN OUR NEWSLETTER**

Unlock a World of Knowledge and Stay Updated with Our Exclusive Content.



If you no longer wish to receive this newsletter,  
**click here to unsubscribe.**

Castle and Pryor Ltd  
Elles Hse, 4b Invincible Rd,  
Farnborough, GU14 7QU

0800 163 382  
info@castle-pryor.co.uk

CONFIDENTIALITY NOTICE: The contents of this e-mail and any attachments are confidential to the intended recipient. If you are not the intended recipient, please notify the sender and delete it. Be aware that emails are not secure and may contain viruses. Unless expressly stated, the content of the e-mail should not be understood to create any contractual commitments

