



Control.
Visibility.
Intelligence.

irus

UtilityMeter

Central monitoring of utility use



Monitor **Utilities** consumption on a site, block, floor, flat, room or circuit level with a system **designed** for **multi-occupancy dwellings**.

The versatility of the **irus building services management system** provides easy connection for a variety of metering solutions to monitor both **electricity** and **water** consumption. Room, flat, floor or block utilities usage is displayed and recorded on the secure portal.

Which metering solution is appropriate for your property?

FEATURE/BENEFIT	iPOM	iMMU	iSMM	iWM
Suitable for retrofitting	•	•	•	•
Connects to room control unit (CU3/CU4)	•			•
Hard-wired to control unit (trunking required)	•			•
Disaggregated energy use reading (ability to read multiple meters)		•	•	
DIN rail mountable	•	•	•	
MODBUS protocol (100% accurate reading)		•	•	
Pulse reading (reliant on reliable comms.)	•			•
Water measuring				•
Available for immediate installation	•	•	Available late 2025	•

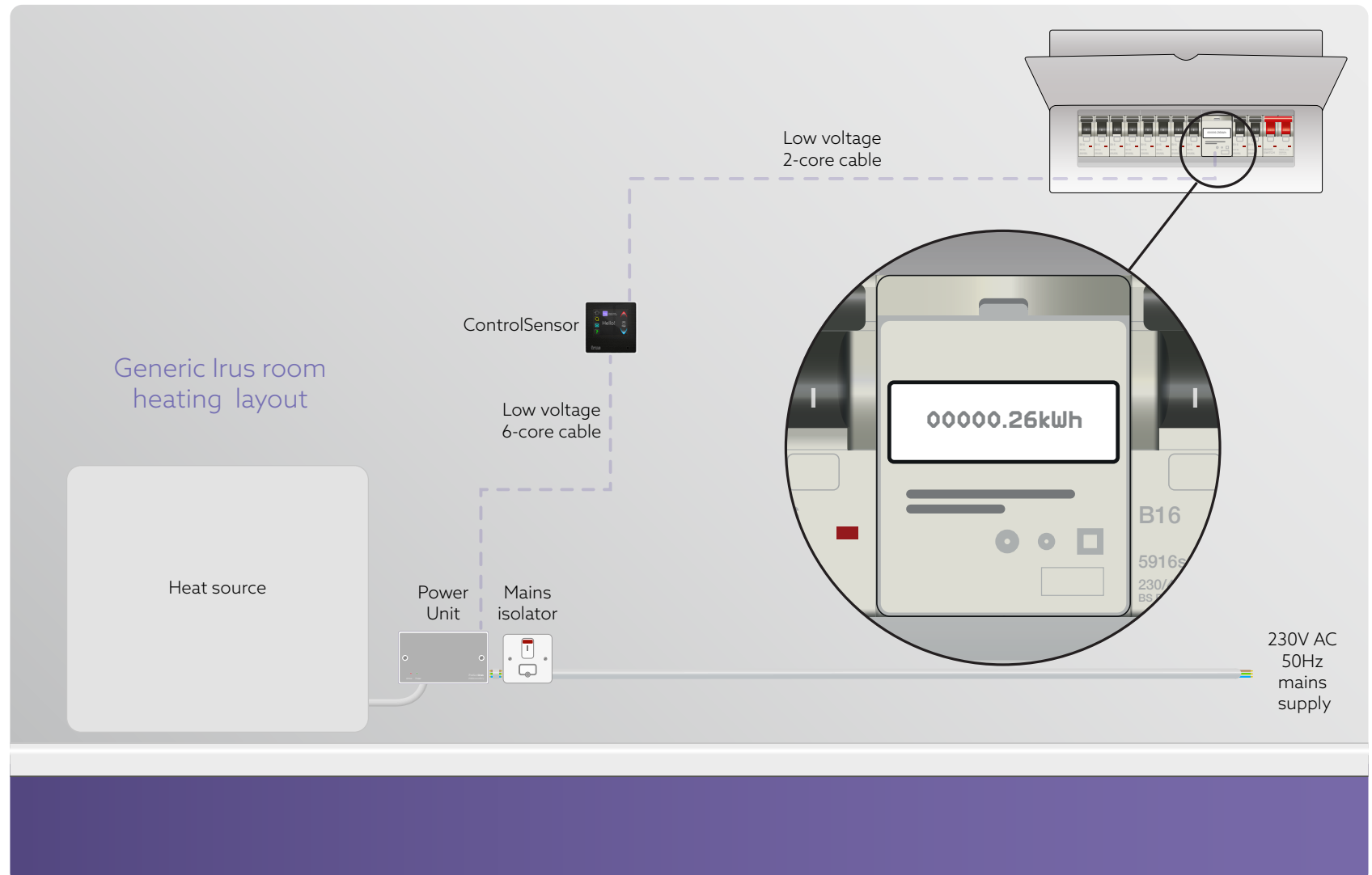
iPOM
irus Pulse Output Meter

iMMU
irus MODBUS Metering Unit

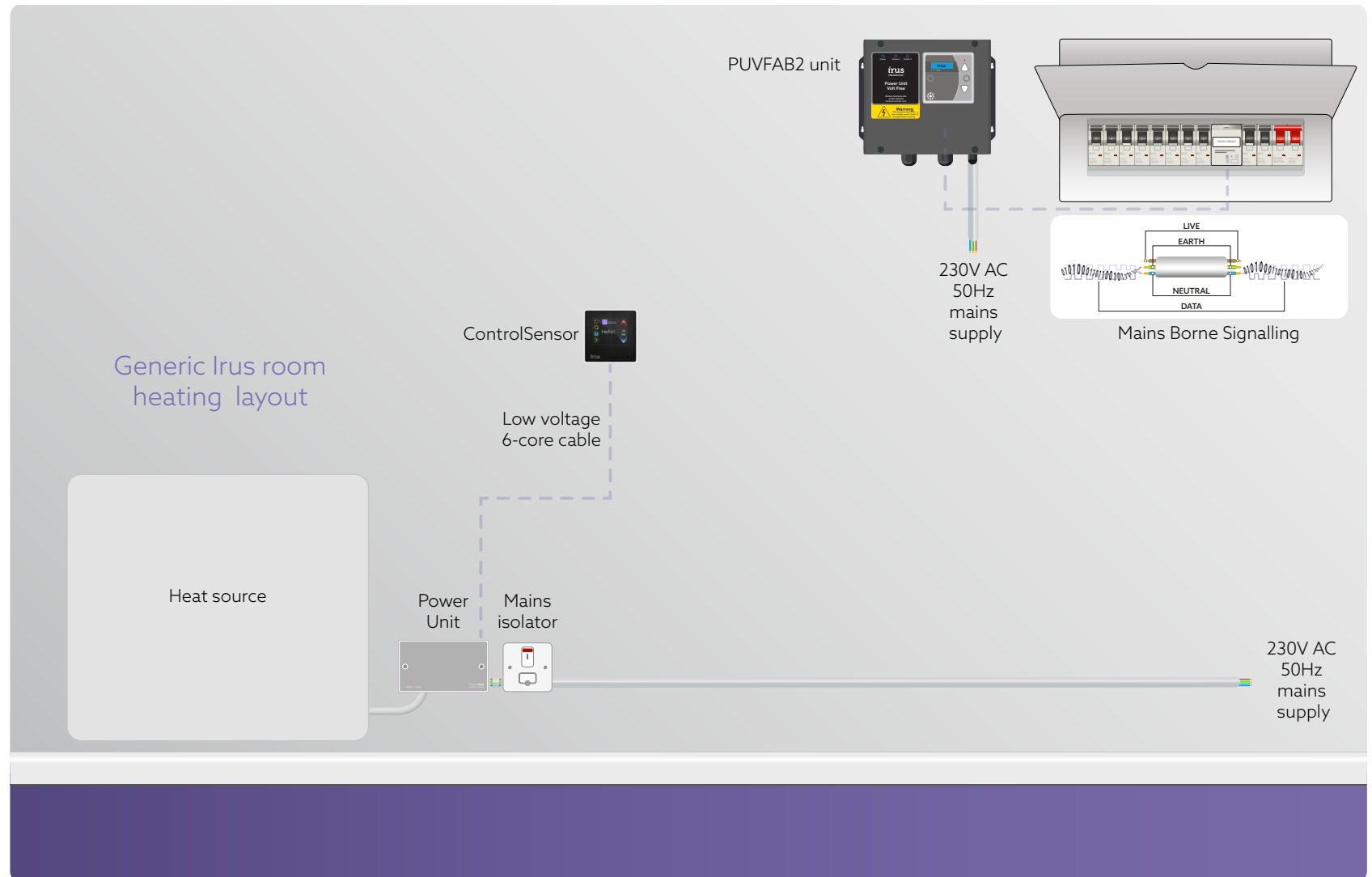
iSMM
irus SMART Meter Module

iWM
irus Water Meters

iPOM is an affordable solution and ideal for retrofitting as it utilises existing Irus heating control equipment which connects to a MID approved pulse output meter.

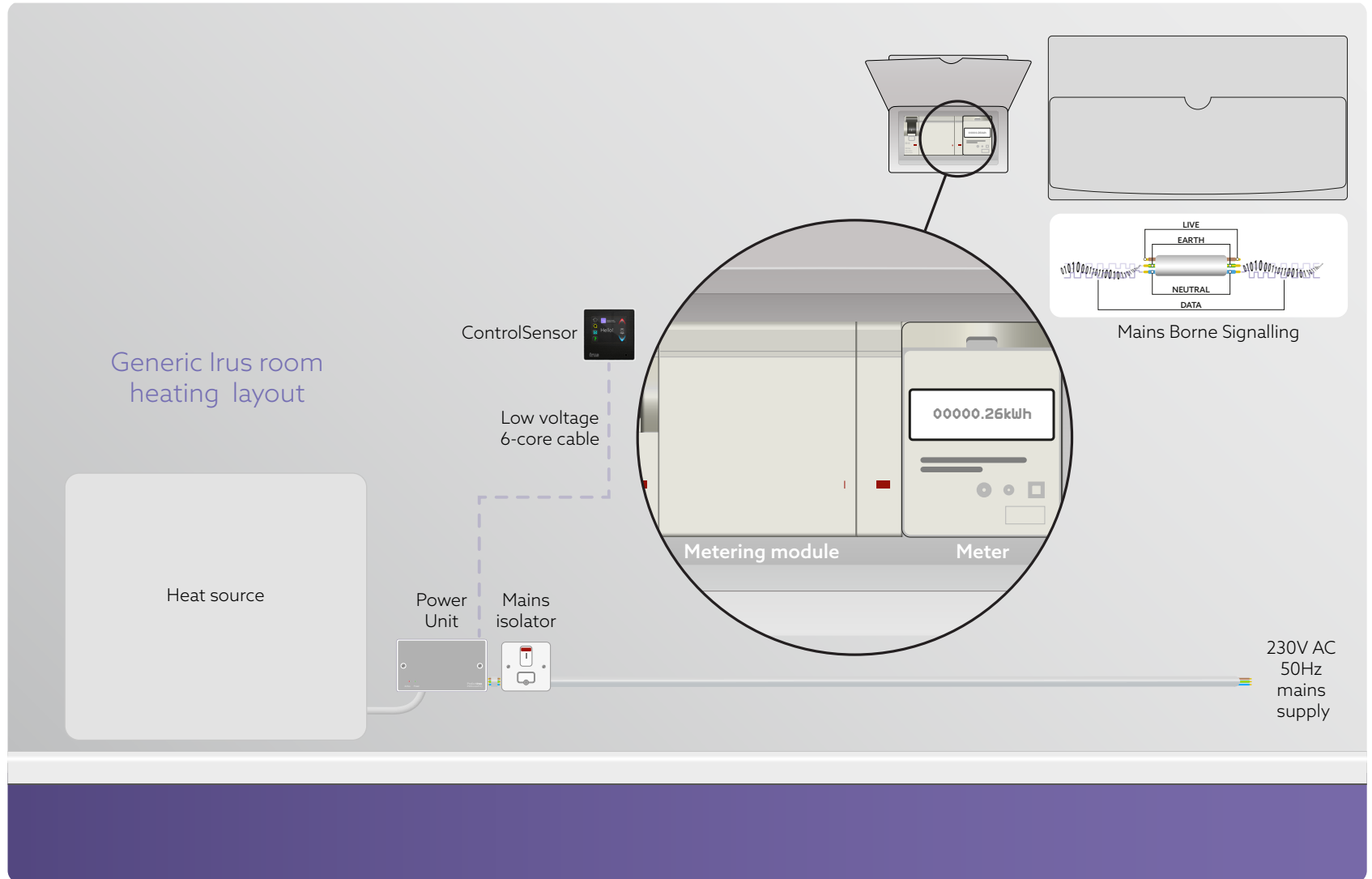


iMMU uses MODBUS connection between the meter(s) and the control unit. Metering information is sent via Mains Borne Signalling to the Irus Portal using Irus central infrastructure. Multiple meters can be read and displayed.

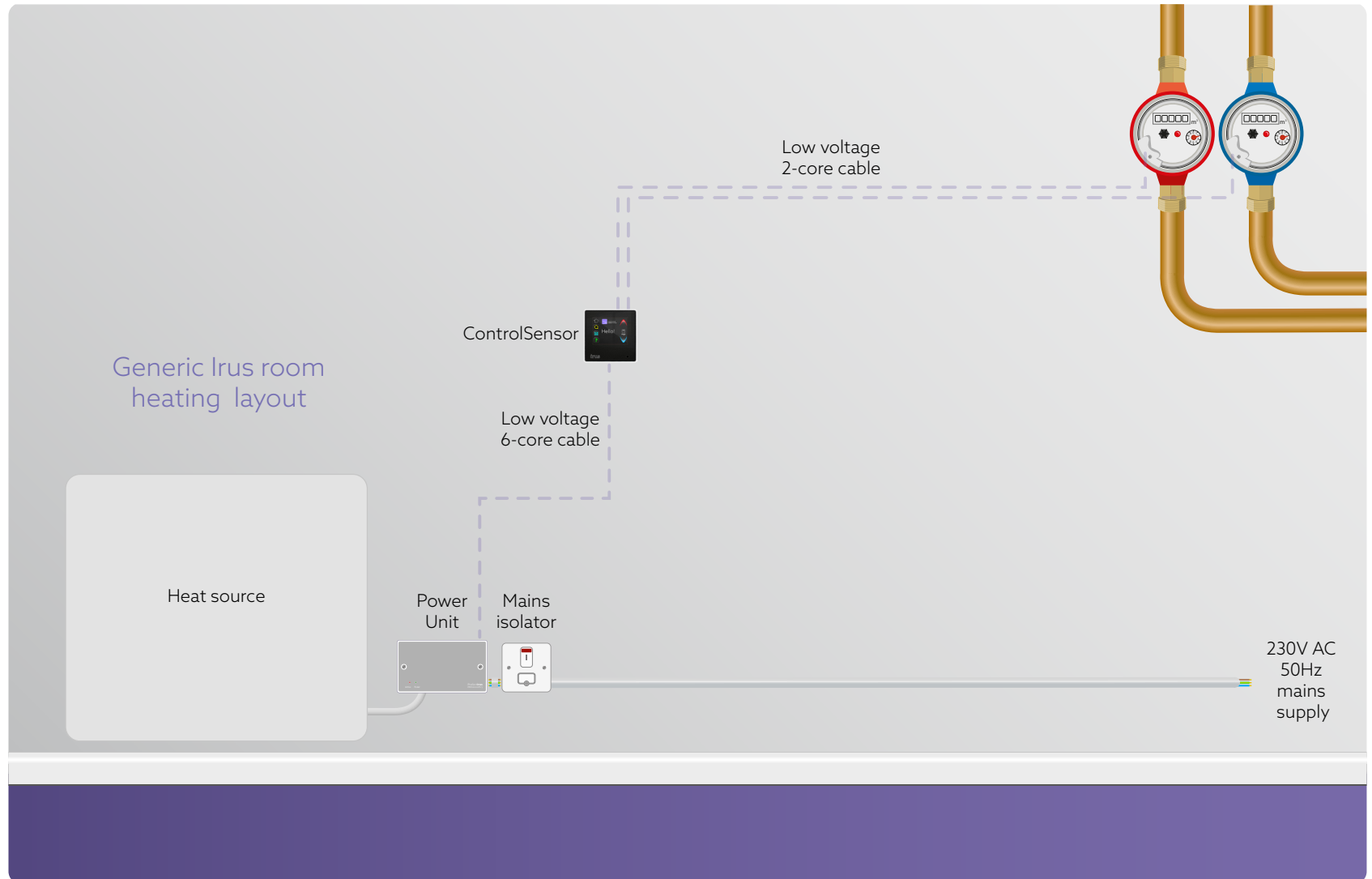


PRE-LAUNCH INFORMATION - This product is in the design phase

iSMM provides a bespoke Irus metering solution. The iSMM unit contains the metering module and the meter. Connecting via MODBUS and communication with the Irus Portal via Mains Borne Signalling on the Irus central infrastructure. Multiple meters can be read. If there is room within the distribution board the meter and module can be DIN Rail mounted.



iWM measures use of hot and cold water using Pulse Output meters. Low Voltage connection between the control unit and the meters collects data which is then sent via Mains Borne Signalling to the Irus Portal where insight is provided of high usage per room, flat, floor or block.



The *irus* ecoSystem

