



Access Design & Safety Ltd

Does Your Scaffolding Meet TG20:21 Guidelines? GUIDE

Savvy
Construction

BY ACCESS DESIGN & SAFETY

Contents

Introduction To TG20:21.....	3
Scaffolding Design And TG20:21.....	4
What Design Features Are Included In TG20:21.....	5
Best Way To Ensure TG20:21 Compliant Scaffolding Design.....	6
Contact Us.....	7



Introduction to TG20:21

TG20:21 Technical Guidance was created by the NASC (National Access & Scaffolding Confederation) The aim of this technical guidance is to impose universal good practice in the use of tube and fitting scaffolding. It sets out guidance for the erection of standard scaffold structures to ensure they are constructed safely & have the required strength & stability for their intended use. The TG20:21 guidelines are endorsed by the UKCG, HSE and CITB.

The guidance given in TG20:21 allows for the standardisation of basic scaffolding projects. TG20:21 is now delivered through an e-portal giving access to the TG20:21 e-guide software. This software provides the ability to produce documentation known as compliance sheets that are used for the construction & checking of basic scaffolds. This includes birdcage scaffolds, bridged scaffolds and loading bays. It extends to both chimney scaffolds and internal freestanding towers. The software also allows for additional items such as protection fans, cantilevered platforms, inside board brackets, pavement lifts and prefabricated transom units. The e-portal also provides access to an Operational Guide & a Design Guide.

Those familiar with the previous version of TG20 (TG20:13) will know it was outlined in two physical books, the Operational Guide and the Design Guide, together with the TG20:13 e-Guide software. TG20:21 is very similar having still retained the Operational Guide & Design Guide along with the software package, however they are all accessed through the TG20:21 e-portal on a subscription basis. This allows access from multiple devices such as computers, tablets & smart phones. The software has been updated to include compliance sheets for a wider range of standard scaffolds & the technical guidance is also summarised in a pocket-sized "TG20:21 User Guide".

TG20:21 guidelines are based on detailed structural research, carried out at considerable expense by the NASC. The resulting set of rules dovetail with the European standard for scaffolding set out in BS EN 12811.



Scaffold Design And TG20:21

In order to comply with TG20:21 all scaffold contractors or main contractors should provide either a TG20:21 compliance sheet or a bespoke design. The criteria laid out in a TG20:21 compliance sheet eliminate any confusion, ignorance or misinformation, if they are applied consistently and comprehensively, however TG20:21 compliance sheets are only intended to cover basic scaffolds. There are no compliance sheets to cover more complicated scaffolds meaning a bespoke design is required.

To find out more about what types of scaffolds do or don't require a design we have compiled a separate guide that details the most common types of scaffolds that are not covered by TG20:21 compliance sheets and therefore require a design. You can download that guide from our website www.designsafe.co.uk.

The screenshot displays the NASC ePortal interface. At the top, there is a blue header with the text "NASC ePortal" and a user profile icon. Below the header, the page is divided into three main content areas:

- TG20:21 eGuide:** This section is titled "Create TG20:21 compliance sheets." It features an image of a tablet and a smartphone, both displaying the eGuide application. The tablet screen shows a 3D wireframe model of a scaffold structure, while the smartphone shows a list of scaffold types with corresponding images.
- TG20:21 Operational Guide:** This section is titled "Read the comprehensive guide to good practice for tube and fitting scaffolding." It includes a photograph of a document titled "Independent scaffolding" with a red line highlighting a section of the text.
- TG20:21 Design Guide:** This section is titled "Read the technical guidance on the use of BS EN 12811-1." It features a photograph of a technical drawing or diagram of a scaffold structure.

What Design Features Are Included In TG20:21 Guidance

In effect, the TG20:21 Technical Guidance provides a checklist for the design of safe, appropriate, compliant and insurable scaffolding structures.

It includes such features as:

- Proper location
- Design height
- Maximum loading
- Tie Load
- Add on features.

Each type of structure is given its own strict measurement and component breakdown. TG20:21 sets out clear guidance for its construction including bay sizes & lift heights as well as specifying the required tie load, which should be tested on site & the maximum leg load so the capacity of the bearing surface can be checked.

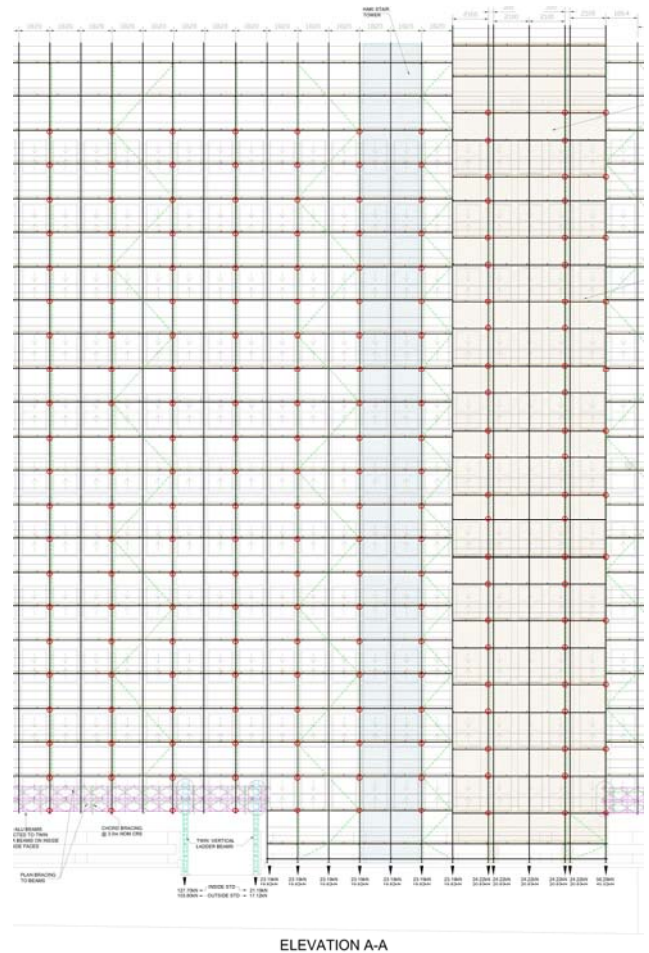


Best Way To Ensure TG20:21 Compliant Scaffold Design

Though TG20:21 is classed as technical guidance, not a statutory requirement, it is considered a core value of the scaffolding industry and associated trades. Compliance also ensures that you stay within the legal requirements of the Work at Height Regulations 2005.

The safety of site personnel is always paramount, However, taking steps to be 100% true to these technical guidelines is also an assured way of meeting insurance policy demands.

The best way to adhere to TG20:21 is to engage the services of a scaffold design company. At Access Design & Safety Ltd we are experienced and adept at meeting the technical standards prescribed for all types of scaffolding projects & we are fully insured for complete peace of mind. We also offer a TG20:21 compliance sheet service for scaffolds that fall within the scope of a standard scaffold for those who are unable to go to the expense of purchasing their own subscription to TG20:21. If you need further advice about TG20:21 and how you can stay compliant or to discuss how we can help you with your latest scaffolding project, please feel free to contact us by phone or email. You can also find out more about us by visiting our website.



Contact Us

Get in Touch

Call us on: 01384 459090

Email us at: info@designsafe.co.uk

Visit our website: www.designsafe.co.uk

Address

1 Parsons Street
Dudley
West Midlands
DY1 1JJ

Connect With Us

Facebook: www.facebook.com/designsafe

Twitter: www.twitter.com/ADS_Wmids

LinkedIn: www.linkedin.com/company/1830675

Instagram: www.instagram.com/accessdesignsafety

Call or email us now, for all of your scaffold design or design checking requirements.

01384 459090

info@designsafe.co.uk

