



KWS door stops hold your door firmly open. For ventilation, cleaning or transport purposes, or if you simply want to keep the door open for your visitors or customers. We have a wide range of variants, sizes, lifts and materials to choose from. Find out more on the following pages.

We hold it.

1

Door holders | 36

Gate holders | 87

# Door holders

1

## Technical notes on door holders:

Door holders are available in various styles and finishes and with different operating methods. The main types of door holders, can be differentiated in foot/hand operated and free operation by selfactivation.

### *Foot operated (hand) door holders:*



1033

push-down doorstop with counter spring



1010

with catch hook



1060

with retaining arm



1048

for pushing down by hand

### *Operation - free door holders - by pushing and pulling the door:*



1002

with magnet



1013

with catch



1055

with ball catch



1064

with spring clip

### **Different applications:**

To give you a clearer understanding of door holders applications, our product pages give an idea of maximum door dimensions and use of a door closer device under the heading "Application". This provides a rough starting point, and gives information on different degrees of robustness in door holders. Local characteristics also play an important part in each individual case (ground conditions, wind, etc.). Some special cases are described on the following page.

## Special cases:

Sometimes particular conditions mean that a normal door holder cannot be used. We have solutions ready for such circumstances and are also grateful for any suggestions from our customers.



### **Case 1** *There is a gap of more than 20 mm between door and ground:*

KWS supplies push-down door holders with various lifts up to 120 mm; for other door holders pads can be placed underneath to compensate for the gap between the floor and the bottom edge of the door.



### **Case 2** *Slippery floors or high wind pressure on open door:*

Door stops 1036, 1037, 1038, 1039 and 1040 to 1042 are pushed into a socket and thus hold the door open regardless of the condition of the ground or the pressure of the wind.



### **Case 3** *Door goes over a step*

Model 1048 has a lift of up to 250 mm and is very robust, which means that it can cope with a step height and holds doors in a fixed position.



### **Case 4** *Glass door without frame*

Using a glass connecting strip, door holders 1113, 1132 and 1133 can be fixed to a door made entirely of glass without having to bore holes in the doors.



### **Case 5** *Barrier-free living*

Operation-free door holders are most suitable here. These models make it possible to secure a door, but only at the point at which the counterpart is mounted (e.g. magnet in floor). Holder 1048 is more flexible which is pressed down by hand since it can be used to secure the door in any position.



### **Case 6** *Extremely heavy doors*

Model 1043 is probably the largest door holder available and is used to secure very heavy doors. Please note that this model is nearly 50 cm high and weighs 1.9 kg.

#### **Please note when installing door and gate holders:**

Door holders should be installed for operation as far from the hinged edge of the door as possible to ensure correct functionality. In external areas a built-in variant is recommended (e.g. model 1009 with anchor plate). Please also note product-related recommendations concerning installation.

# Overview

1



Page 36



Page 37



Page 38



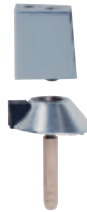
Page 39



Page 40



Page 41



Page 42



Page 43



Page 43



Page 44



Page 45



Page 46



Page 47



Page 48



Page 49



Page 50



Page 51



Page 52



Page 53



Page 54



Page 54



Page 55



Page 56



Page 57



Page 57



Page 58



Page 59



Page 60



Page 61



Page 62



Page 63



Page 64



Page 65



Page 66



Page 67



Page 68



Page 69



Page 70



Page 71



Page 72

## Overview



Page 73



Page 74



Page 75



Page 76



Page 77



Page 78



Page 79



Page 80



Page 81



Page 81



Page 82



Page 82



Page 83



Page 83



Page 84



Page 84



Page 85



Page 85



Page 86



Page 87



Page 88



Page 89



Page 89



Page 90



Page 90



Page 91



Page 91



Page 92

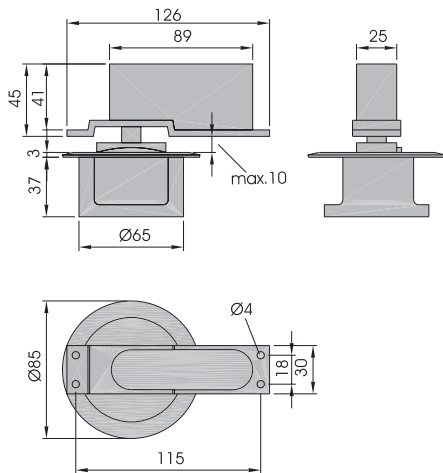
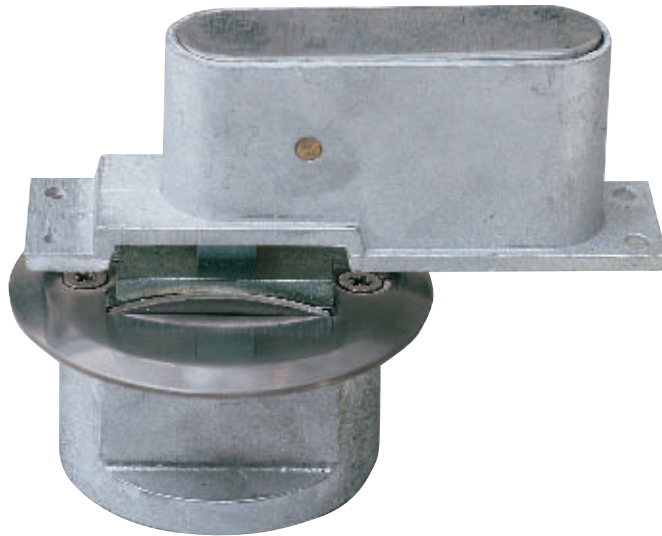


Page 93



# Door holders

1



**1002..** with permanent magnet, top part for inserting into the door body

Top housing made of aluminium, bottom part made of aluminium with cover plate of stainless steel

Suitable for school and hospital doors etc. due to its trip-proof design

## Application

Door width up to 1000 mm  
Door height 2200 mm  
Door weight up to 60 kg  
Door closer unsuitable  
Minimum door thickness 40 mm

## Standard finish

a) Aluminium, E6 treated  
.41 KWS 1 silver anodised

## Packing Unit

1 piece

## Weight per piece

Aluminium 0.820 kg

## Function

The door should be pushed open until it is positioned above the magnet which attracts the catch plate and holds the door. To release the door pull away from the magnet. Release force approx. 65 N

## Mounting

The top housing should be inserted into the door body from below leaving the maximum possible distance to the hinged edge of the door and fastened by 4 screws. The bottom part is to be embedded in the floor flush to the above catch plate. The cover plate should be screwed on again. The distance between retracted catch plate and magnet must not exceed 10 mm.

## Order example

Piece	Item No.	Finish
...piece	1002	41

## 1004.. with permanent magnet, top part for face fixing

Top housing made of aluminium, bottom part made of aluminium with cover plate of stainless steel

Suitable for school and hospital doors etc.  
due to its trip-proof design

### Application

Door width up to 1000 mm  
Door height up to 2200 mm  
Door weight up to 60 kg  
Door closer suitable

### Standard finish

- a) Aluminium, E5 treated
  - .31 KWS 1 silver anodised
  - .32 KWS 2 nickel silver anodised
  - .33 KWS 3 brass-coloured anodised
  - .37 KWS 5 dark brown anodised
- b) Aluminium, E5 treated
  - .70 plastic coated

### Packing Unit

1 piece

### Weight per piece

Aluminium 0.920 kg

### Function

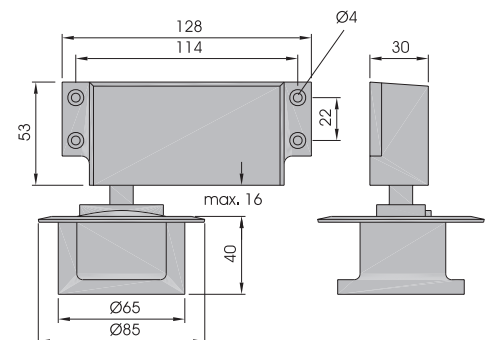
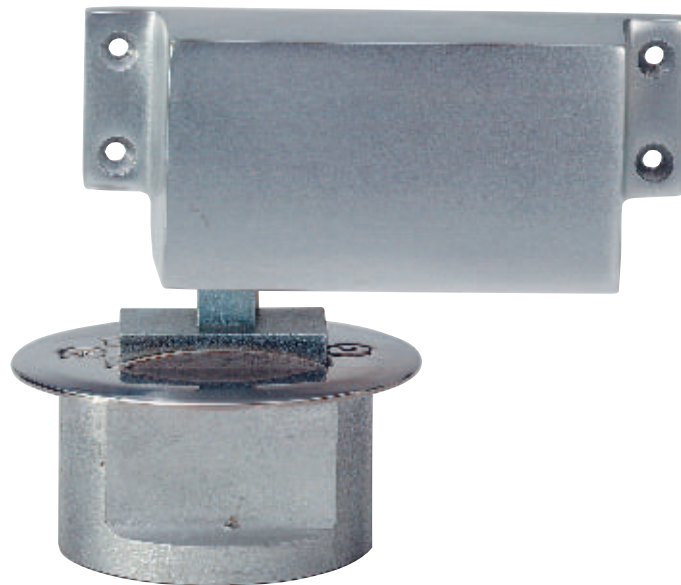
The door should be pushed open until it is positioned above the magnet which attracts the catch plate and holds the door. To release the door pull away from the magnet. Release force approx. 65 N

### Mounting

The top housing should be screwed onto the door leaving the maximum possible distance to the hinged edge of the door. The bottom part should be embedded in the floor flush to the above catch plate. The cover plate should be screwed on again. The distance between retracted catch plate and magnet must not exceed 10 mm.

### Note

When ordering please indicate right hand or left hand door  
(drawing shows door holder for rh door).

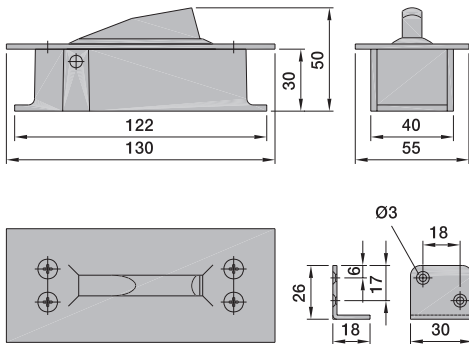
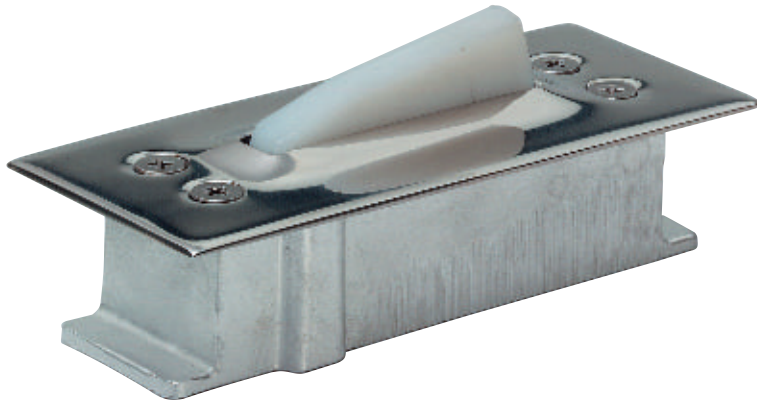


### Order example

Piece	Item No.	Finish	rh/lh
...piece	1004	31	rh

# Door holders

1



## 1005.. for doors with closing facility

Case for flush installation made of aluminium,  
cover plate made of brass or stainless steel,  
slide stop made of plastic

### Application

Door width up to 1000 mm

Door height up to 2200 mm

Door weight up to 80 kg

Door closer required

### Standard finish

#### a) Brass

.62 dull brushed and colourless coated

.66 polished and colourless coated

#### b) Stainless steel



.82 dull brushed

.83 polished

### Packing Unit

2 pieces

### Weight per piece

Brass 0.350 kg

Stainless steel 0.340 kg

### Function

The door should be moved beyond the spring-loaded plastic slide stop which moves up again and, aided by the counter-pressure of a closing mechanism, locks the door in position. Stepping on the slide stop releases the door again. The included angle serves as edge protection for wooden doors and protects the slide stop from abrasion in case of metal doors.

### Mounting

The case should be embedded in the floor at the proposed locking point which should leave the maximum possible distance from the hinged edge of the door. The cover plate is to be screwed on again.

### Order example

Piece	Item No.	Finish
...piece	1005	62

## 1006.. for 8 - 13 mm door thickness

With spring-loaded limit stop, rubber white  
Case for flush installation made of aluminium,  
cover plate made of stainless steel,  
slide stop made of plastic

### Application

Door width up to 1000 mm  
Door height up to 2200 mm  
Door weight up to 60 kg  
Door closer suitable

### Standard finish

a) Stainless steel



.82 dull brushed  
.83 polished

### Packing Unit

2 pieces

### Weight per piece

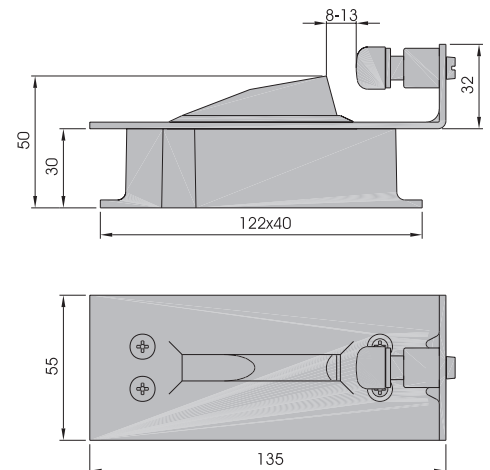
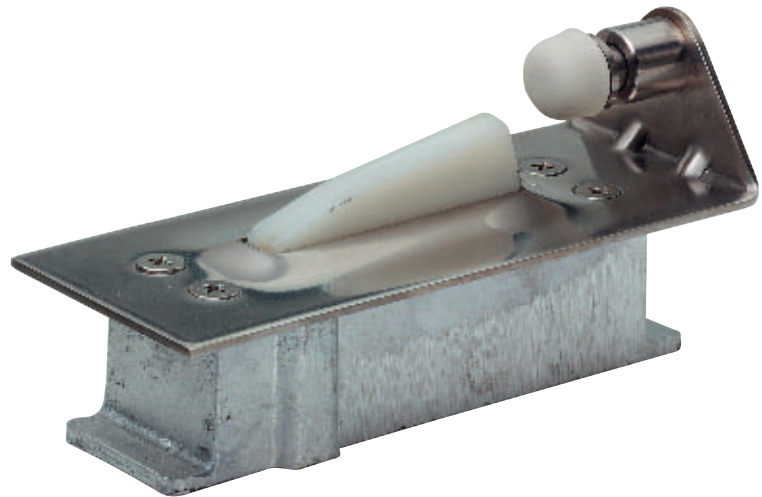
Stainless steel 0.370 kg

### Function

The door should be moved to the limit stop beyond the spring-loaded plastic slide stop which moves up again and thus locks the door in position. Stepping on the slide stop releases the door again.

### Mounting

The case should be embedded in the floor at the proposed locking point which should leave the maximum possible distance from the hinged edge of the door. The cover plate is to be screwed on again.

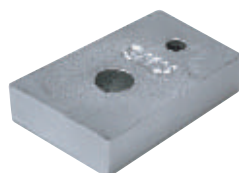
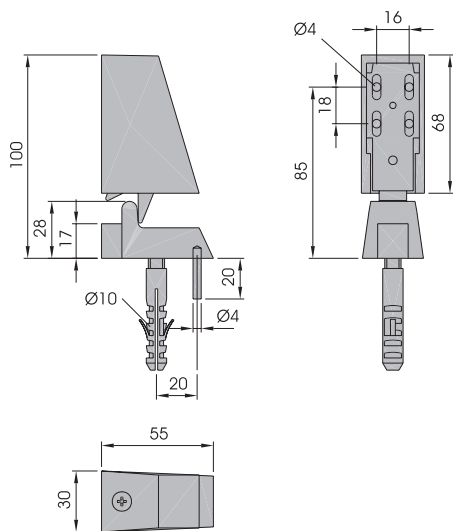


### Order example

Piece	Item No.	Finish
...piece	1006	82

# Door holders

1



1013.. with fixings  
1014.. without fixings

Housing and floor block made of aluminium or brass  
Other internal parts made of steel, electrogalvanised  
Catch made of plastic  
Buffer made of rubber, black

## Application

Door width up to 1000 mm  
Door height up to 2200 mm  
Door weight up to 50 kg  
Door closer suitable

## Standard finish

- a) Aluminium
  - .02 silver stove-enamelled
  - .03 black stove-enamelled
  - .10 dark brown stove-enamelled
- b) Aluminium, E5 treated
  - .31 KWS 1 silver anodised
  - .32 KWS 2 nickel silver anodised
  - .33 KWS 3 brass-coloured anodised
  - .35 stainless steel effect anodised
  - .37 KWS 5 dark brown anodised
- c) Brass
  - .62 dull brushed and colourless coated
  - .63 nickelized
  - .66 polished and colourless coated
- d) Aluminium
  - .70 plastic coated

## Packing Unit

1 piece

## Weight per piece

Aluminium 0.240 kg  
Brass 0.460 kg

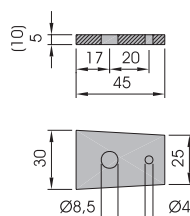
## Function

By simply pushing or pulling the door on or from the stop the door is held open or released. Release force approx. 100 N. In case of a subsequent rising or sagging of the door the door holder can be adjusted in a simple manner.

## Mounting

The door catch mechanism should be mounted onto the door at the maximum possible distance from the hinged edge of the door. The housing should be put on and secured by a screw. The floor block should be screwed on the floor in the appropriate position. An additional pin, embedded in the floor, prevents the floor block from turning. Detailed instructions and drilling template are supplied with each unit.

For adjustment in height we recommend using pad no. 1555.. (5 mm) or no. 1556.. (10 mm).



1555.. Pad 5 mm high  
1556.. Pad 10 mm high

Standard finish see 1013.. and 1014..

## Weight per piece

Aluminium 0.015 kg  
Brass 0.045 kg

## Order example

Piece	Item No.	Finish
...piece	1013	02

1113.. with fixings  
1114.. without fixings

With clamp fitting for full glass doors (8 - 10 mm),

- 1) Housing and floor block made of aluminium, clamp fitting of stainless steel, colour matching
- 2) Housing, floor block and clamp fitting made of brass

Other internal parts made of steel, electrogalvanised  
Catch made of plastic, buffer made of rubber, black

## Application

Door width up to 1000 mm  
Door height up to 2200 mm  
Door weight up to 50 kg  
Door closer suitable

## Standard finish

- a) Aluminium, E5 treated
  - .31 KWS 1 silver anodised
  - .32 KWS 2 nickel silver anodised
  - .33 KWS 3 brass-coloured anodised
  - .37 KWS 5 dark brown anodised
- b) Brass
  - .62 dull brushed and colourless coated
  - .63 nickel plated
  - .66 polished and colourless coated
- c) Aluminium
  - .70 plastic coated

## Packing Unit

1 piece

## Weight per piece

Aluminium 0.530 kg  
Brass 0.690 kg

## Function

By simply pushing or pulling the door on or from the stop the door is held open or released. Release force approx. 80 N

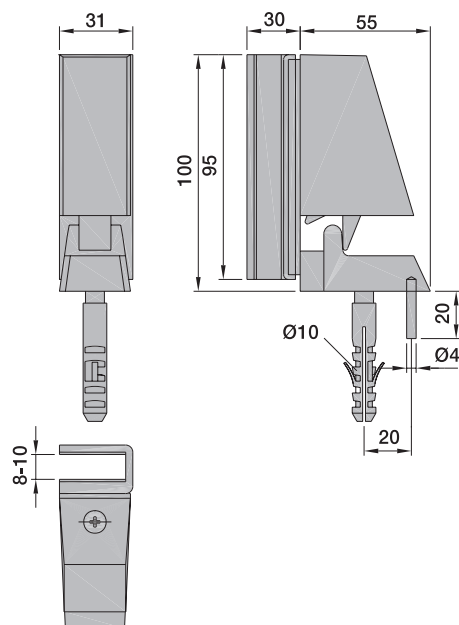
In case of a subsequent rising or sagging of the door the door holder can be adjusted in a simple manner.

Suitable for rh and lh doors.

## Mounting

The clamp fitting should be put on the door and fastened. The holder mechanism is to be screwed on the clamping bar, housing of holder mechanism put on and secured by a screw. The floor block should be mounted on the floor in the appropriate position. An additional pin, embedded in the floor, prevents the floor block from turning. It is not necessary to bore holes in the glass to fasten the door catch. Detailed instructions are supplied with each unit.

For adjustment in height we recommend using pad no. 1555.. (5 mm) or no. 1556.. (10 mm) shown with item nos. 1013../1014..

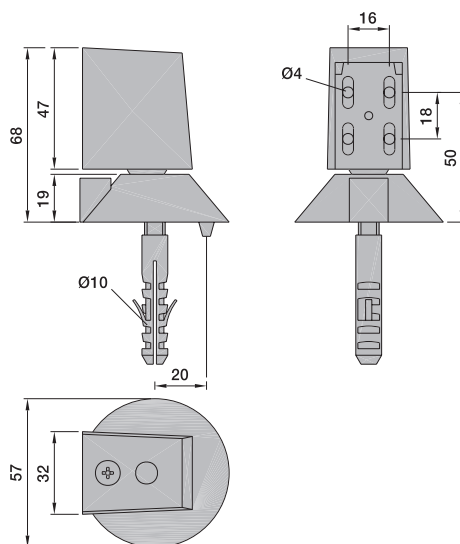


## Order example

Piece ...piece	Item No. 1113	Finish 31
-------------------	------------------	--------------

# Door holders

1



1023.. with fixings

1090.. without fixings

Top housing and floor block made of aluminium or brass  
Other internal parts made of steel electrogalvanised  
Buffer made of rubber, black

## Application

Door width up to 1000 mm  
Door height up to 2200 mm  
Door weight up to 40 kg  
Door closer suitable

## Standard finish

- a) Aluminium
  - .02 silver stove-enamelled
  - .03 black stove-enamelled
  - .10 dark brown stove-enamelled
  - .70 plastic coated
- b) Aluminium, E5 treated
  - .31 KWS 1 silver anodised
  - .32 KWS 2 nickel silver anodised
  - .33 KWS 3 brass-coloured anodised
  - .37 KWS 5 dark brown anodised
- c) Brass
  - .62 dull brushed and colourless coated
  - .63 nickelized
  - .66 polished and colourless coated

## Packing Unit

5 pieces

## Weight per piece

Aluminium 0.200 kg  
Brass 0.340 kg

## Function

By simply pushing or pulling the door on or from the stop the door is held open or released. In case of a subsequent rising or sagging of the door the door holder can be adjusted in a simple manner. A set screw adjusts the ball pressure.

## Mounting

The door catch mechanism should be mounted on the door at the maximum possible distance from the hinged edge of the door. The floor block should be screwed on the floor in the appropriate position. An additional pin, embedded in the floor, prevents the floor block from turning.

## Order example

Piece	Item No.	Finish
...piece	1023	02

## 1019..

Casing for flush installation made of aluminium with cover plate of stainless steel, counter plate made of steel, electrogalvanised

### Application

Door width up to 1000 mm  
Door height up to 2100 mm  
Door weight up to 40 kg  
Door closer suitable

### Standard finish

#### a) Stainless steel



.82 dull brushed  
.83 polished

### Packing Unit

5 pieces

### Weight per piece

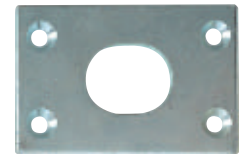
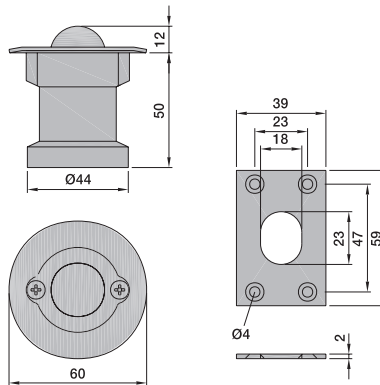
Stainless steel 0.210 kg

### Function

The door should be positioned above the door catch, embedded in the floor, until it is arrested by the ball. To release the door simply pull it off the stopper ball.

### Mounting

Casing for flush installation should be embedded in the floor at the maximum possible distance from the hinged edge of the door, the counter plate should be fitted to the door in the appropriate position.



## 1021..

Casing for flush installation made of aluminium with cover plate of stainless steel, counter plate made of steel, electrogalvanised

### Application

Door width up to 1000 mm  
Door height up to 2200 mm  
Door weight up to 100 kg  
Door closer suitable

### Standard finish

#### a) Stainless steel



.82 dull brushed  
.83 polished

### Packing Unit

1 Piece

### Weight per piece

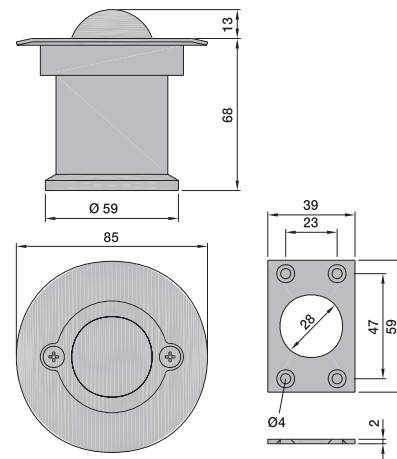
Stainless steel 0.540 kg

### Function

The door should be positioned above the door catch, embedded in the floor, until it is arrested by the ball. To release the door simply pull it off the stopper ball.

### Mounting

Casing for flush installation should be embedded in the floor at the maximum possible distance from the hinged edge of the door, the counter plate should be fitted to the door in the appropriate position.



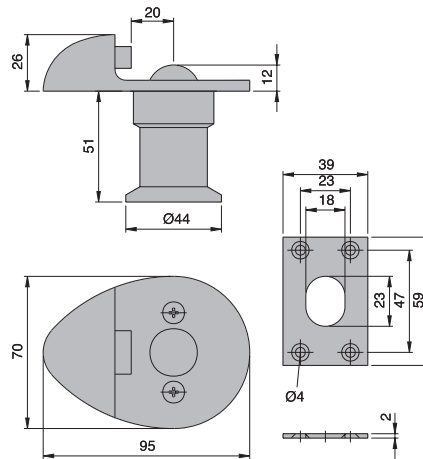
### Order example

Piece	Item No.	Finish
...piece	1019	82



# Door holders

1



## 1020.. with limit stop

Casing for flush installation with cover plate made of aluminium, counter plate of steel, electrogalvanised  
Buffer made of rubber, black

### Application

Door width up to 1000 mm  
Door height up to 2100 mm  
Door weight up to 40 kg  
Door closer suitable

### Standard finish

- a) Aluminium, E5 treated
- .31 KWS 1 silver anodised
  - .32 KWS 2 nickel silver anodised
  - .33 KWS 3 brass-coloured anodised
  - .37 KWS 5 dark brown anodised

### Packing Unit

4 pieces

### Weight per piece

Aluminium 0.320 kg

### Function

The door should be moved over the door holder to the limit stop until the ball catches.  
To release the door simply pull it off the stopper ball.

### Mounting

Casing for flush installation should be embedded in the floor at the maximum possible distance from the hinged edge of the door, the counter plate should be fitted to the door in the appropriate position.

### Order example

Piece	Item No.	Finish
...piece	1020	31

1015.. with permanent magnet,  
with fixings

1016.. with permanent magnet,  
without fixings

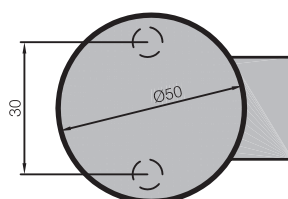
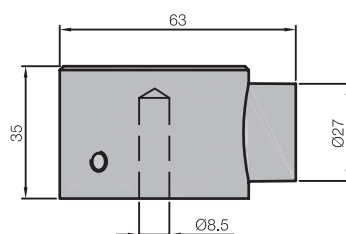
Made of aluminium, brass and stainless steel,  
Threaded bolts of stainless steel  
Mating plate of steel stove-enamelled

## Application

Door width up to 1000 mm  
Door height up to 2200 mm  
Door weight up to 60 kg  
Door closer suitable

## Standard finish

- a) Aluminium, E5 treated
  - .31 KWS 1 silver anodised
  - .32 KWS 2 nickel silver anodised
  - .33 KWS 3 brass-coloured anodised
  - .37 KWS 5 dark brown anodised
- b) Brass
  - .62 dull brushed and colourless coated
  - .66 polished and colourless coated
- c) Aluminium
  - .70 plastic coated
- d) Stainless steel
  - .82 dull brushed
  - .83 polished



## Packing Unit

1 piece

## Weight per piece

Aluminium 0.200 kg  
Brass 0.550 kg  
Stainless steel 0.500 kg

## Function

The door is retained by pushing it onto the permanent magnet. Release force approx. 120 N  
The magnet is spring-loaded so that the door is retarded.

## Mounting

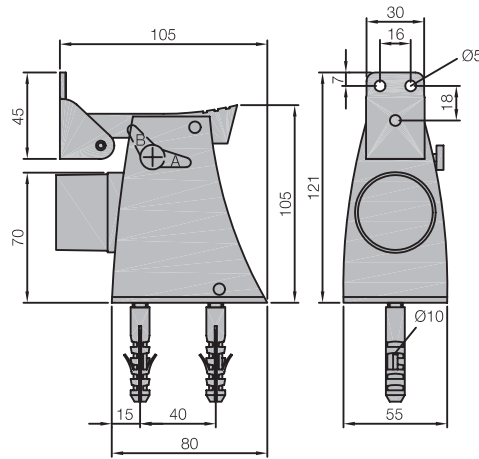
The door holder should be mounted by two plugs and at the maximum possible distance from the hinged edge of the door. On the door the mating plate should be mounted accordingly by a screw.

## Order example

Piece	Item No.	Finish
...piece	1015	31

# Door holders

1



1110.. with mounting plate

Made of aluminium with roller plate of stainless steel

Mounting plate made of steel hot galvanised

## Application

Door width up to 1200 mm

Door height up to 2200 mm

Door weight up to 120 kg

Door closer suitable

## Standard finish

### a) Aluminium

.02 silver stove-enamelled

.03 black stove-enamelled

.10 dark brown stove-enamelled

.70 plastic coated

### b) Aluminium, E5 treated

.31 KWS 1 silver anodised

.32 KWS 2 nickel silver anodised

.33 KWS 3 brass-coloured anodised

.35 stainless steel effect anodised

.37 KWS 5 dark brown anodised

## Packing Unit

1 piece

## Weight per piece

Aluminium 0.600 kg

## Function

For retaining the door, it is pushed against the holder until the catch hook locks it into position; you release it by operating the catch hook while pushing the door against the holder at the same time. Moving the lever from position A to position B (see drawing) interrupts the locking function of the door catch. In this position it only has the function of a spring-loaded buffer.

## Mounting

Screw the mounting plate of the door holder on the floor by 2 screws and embedded plugs in the desired position at the maximum possible distance from the hinged edge of the door. Then mount the holder and fix it to the mounting plate by the two screws on the side. The roller plate is fitted on the door in the appropriate position.

## Order example

Piece	Item No.	Finish
...piece	1110	02

**1009..** with anchor plate for building in  
**1010..** for face fixing

- 1) Made of aluminium, stove-enamelled or plastic-coated, with roller plate of steel,
- 2) Made of aluminium, anodised, with roller plate of stainless steel
- 3) Made of brass, with roller plate of brass,
- 4) Made of stainless steel, with roller plate of stainless steel

Buffer made of rubber, black, spring-loaded

Buffer seat and bolt made of stainless steel

Anchor plate (art. no. 1009..) made of steel, hot galvanised or stainless steel

## Application

Door width up to 1000 mm

Door height up to 2200 mm

Door weight up to 100 kg

Door closer suitable

## Standard finish

### a) Aluminium

- .02 silver stove-enamelled
- .03 black stove-enamelled
- .10 dark brown stove-enamelled
- .70 plastic coated

### b) Aluminium, E5 treated

- .31 KWS 1 silver anodised
- .32 KWS 2 nickel silver anodised
- .33 KWS 3 brass-coloured anodised
- .37 KWS 5 dark brown anodised

### c) Brass

- .62 dull brushed and colourless coated
- .63 nickelized
- .66 polished and colourless coated

### d) Stainless steel



- .82 dull brushed
- .83 polished

## Packing Unit

1 piece

## Weight per piece

	1009..	1010..
Aluminium	0.860 kg	0.570 kg
Brass	1.320 kg	1.030 kg
Stainless Steel	1.270 kg	1.040 kg

## Function

The door should be pushed against the catch hook until it is locked in position. To release the door push it slightly against the buffer and operate the catch hook. Moving the switch from position A to B (see diagram) will interrupt the locking function of the door catch with only the spring-loaded buffer remaining in operation.

## Mounting

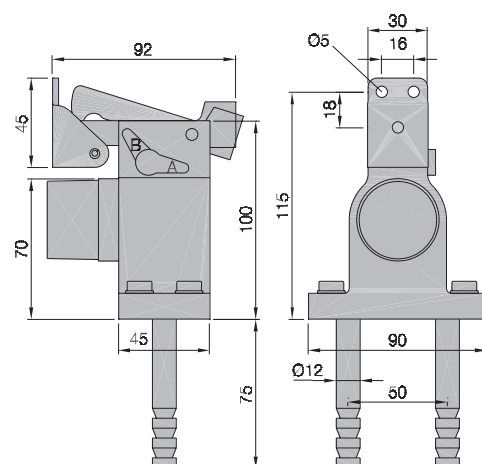
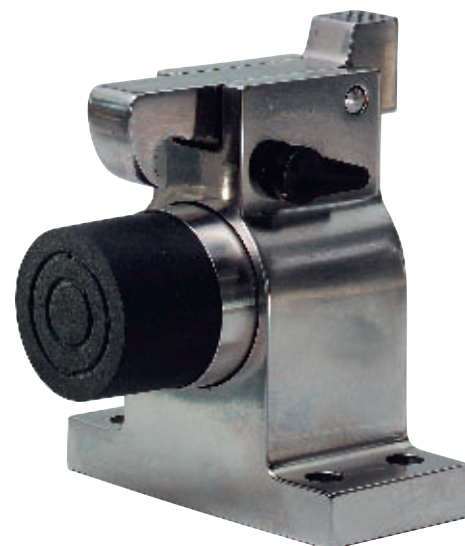
For building in:

The anchor plate should be embedded in the floor in the proposed position at the maximum possible distance from the hinged edge of the door. Once the grout has hardened, the door holder can be screwed on. The roller plate should be fitted on the door in the appropriate position.

For face fixing:

The holder should be mounted on the floor by 4 plugs and screws in the proposed position at the maximum possible distance from the hinged edge of the door. The roller plate should be fitted on the door in the appropriate position.

For adjustment in height we recommend using pad no. 1610.. (20 mm).



**1610..** Pad 20 mm high

## Standard finish

### a) Aluminium

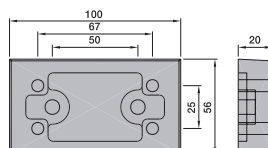
- .70 plastic coated

## Packing Unit

1 piece

## Weight per piece

Aluminium 0.300 kg

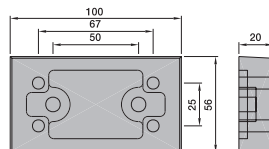
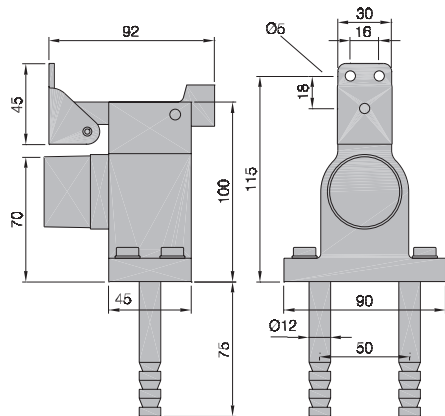


## Order example

Piece ...piece	Item No. 1009	Finish 02
-------------------	------------------	--------------

# Door holders

1



1051.. with anchor plate for building in  
1052.. for face fixing

- 1) Made of aluminium stove-enamelled or plastic-coated, with roller plate of steel,
- 2) Made of aluminium anodised, with roller plate of stainless steel,

Buffer made of rubber, black, spring-loaded  
Buffer seat and bolt made of stainless steel

Anchor plate (item no. 1051..) made of steel, hot galvanised

## Application

Door width up to 1000 mm  
Door height up to 2200 mm  
Door weight up to 100 kg  
Door closer suitable

## Standard finish

- a) Aluminium
  - .02 silver stove-enamelled
  - .03 black stove-enamelled
  - .10 dark brown stove-enamelled
  - .70 plastic coated
- b) Aluminium, E5 treated
  - .31 KWS 1 silver anodised
  - .32 KWS 2 nickel silver anodised
  - .33 KWS 3 brass-coloured anodised
  - .37 KWS 5 dark brown anodised

## Packing Unit

1 piece

Weight per piece	1051..	1052..
Aluminium	0.840 kg	0.550 kg

## Function

The door should be pushed against the catch hook until it is locked in position. To release the door push it slightly against the buffer and operate the catch hook.

## Mounting

For building in:

The anchor plate should be embedded in the floor in the proposed position at the maximum possible distance from the hinged edge of the door. Once the grout has hardened, the door holder can be screwed down. The roller plate should be fitted on the door in the appropriate position.

For face fixing:

The holder should be mounted on the floor by 4 plugs and screws in the proposed position at the maximum possible distance from the hinged edge of the door. The roller plate should be fitted on the door in the appropriate position.

For adjustment in height we recommend using pad no. 1610.. (20 mm).

1610.. Pad 20 mm high

## Standard finish

- a) Aluminium
  - .70 plastic coated

## Packing Unit

1 piece

## Weight per piece

Aluminium 0.300 kg

## Order example

Piece	Item No.	Finish
...piece	1051	02

1091.. with anchor plate for building in  
1092.. for face fixing

With locking device

- 1) Made of aluminium stove-enamelled or plastic-coated, with roller plate of steel
- 2) Made of aluminium anodised, with roller plate of stainless steel

Buffer made of rubber, black, spring-loaded  
Buffer seat and bolt made of stainless steel  
Anchor plate (art. no. 1051..) made of steel, hot galvanised

## Application

Door width up to 1000 mm  
Door height up to 2200 mm  
Door weight up to 100 kg  
Door closer suitable

## Standard finish

- a) Aluminium
  - .02 silver stove-enamelled
  - .03 black stove-enamelled
  - .10 dark brown stove-enamelled
  - .70 plastic coated
- b) Aluminium, E5 treated
  - .31 KWS 1 silver anodised
  - .32 KWS 2 nickel silver anodised
  - .33 KWS 3 brass-coloured anodised
  - .37 KWS 5 dark brown anodised

## Packing Unit

1 piece

**Weight per piece**      1091..      1092..  
Aluminium              0.870 kg      0.580 kg

## Function

The door should be pushed against the catch hook until it is locked in position. To release the door push it slightly against the buffer and operate the catch hook. Moving the switch from position A to B (see diagram) will interrupt the locking function of the door catch, with only the spring-loaded buffer remaining in operation. The locking device is provided to block the catch hook and thus prevent unauthorized persons from closing the open door held by the door catch. The identical locking cylinders are supplied with 2 keys each.

## Mounting

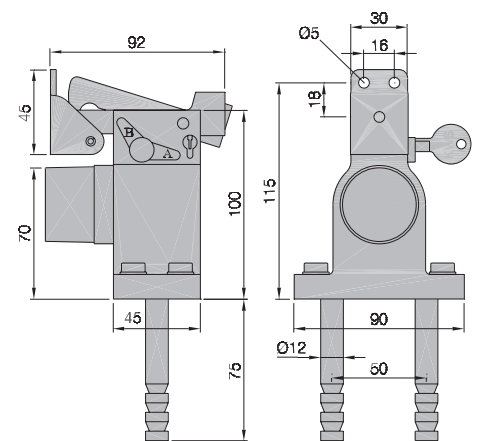
For building in:

The anchor plate should be embedded in the floor in the proposed position at the maximum possible distance from the hinged edge of the door. Once the grout has hardened, the door holder can be screwed on. The anchor plate should be fitted on the door in the appropriate position.

For face fixing:

The holder should be mounted on the floor by 4 plugs and screws in the proposed position at the maximum possible distance from the hinged edge of the door. The roller plate should be fitted on the door in the appropriate position.

For adjustment in height we recommend using pad no. 1610.. (20 mm).



1610.. Pad 20 mm high

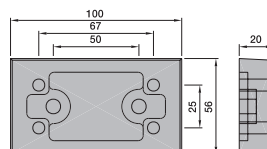
## Standard finish

- a) Aluminium
  - .70 plastic coated

## Packing Unit

1 piece

**Weight per piece**  
Aluminium      0.300 kg

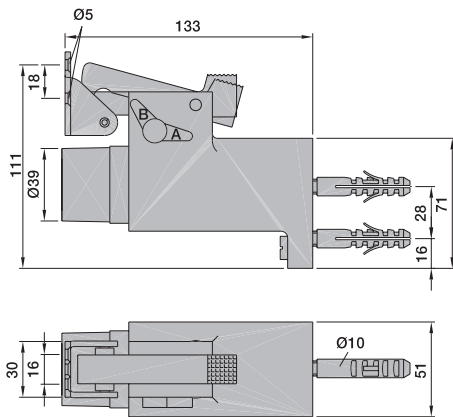
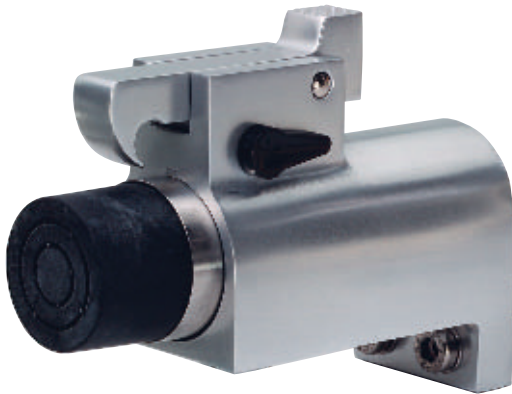


## Order example

Piece	Item No.	Finish
...piece	1091	02

# Door holders

1



1011.. with fixings

1012.. without fixings

1) Made of aluminium stove-enamelled or plastic-coated, with roller plate and fastening strap of steel

2) Made of aluminium anodised, with roller plate and fastening strap of stainless steel

Buffer made of rubber, black, spring-loaded  
Buffer seat and bolt made of stainless steel

## Application

Door width up to 1000 mm

Door height up to 2200 mm

Door weight up to 60 kg

Door closer suitable

## Standard finish

### a) Aluminium

.02 silver stove-enamelled

.03 black stove-enamelled

.10 dark brown stove-enamelled

.70 plastic coated

### b) Aluminium, E5 treated

.31 KWS 1 silver anodised

.32 KWS 2 nickel silver anodised

.33 KWS 3 brass-coloured anodised

.37 KWS 5 dark brown anodised

## Packing Unit

1 piece

Weight per piece	1011..	1012..
Aluminium	0.730 kg	0.690 kg

## Function

The door should be pushed against the catch hook until it is locked in position. To release the door push it slightly against the buffer and operate the catch hook. Moving the switch from position A to B (see diagram) will interrupt the locking function of the door catch, with only the spring-loaded buffer remaining in operation.

## Mounting

The fastening strap should be screwed on the wall in the proposed position at the maximum possible distance from the hinged edge of the door. The roller plate should be fitted on the door in the appropriate position.

## Order example

Piece	Item No.	Finish
...piece	1011	02



1095.. with fixings  
1096.. without fixings

Tilting (up to 10° to the right and left)

- 1) Made of aluminium stove-enamelled or plastic-coated, with roller plate and fastening strap of steel
- 2) Made of aluminium anodised, with roller plate and fastening strap of stainless steel

Buffer made of rubber, black, spring-loaded  
Buffer seat and bolt made of stainless steel

## Application

Door width up to 1000 mm  
Door height up to 2200 mm  
Door weight up to 100 kg  
Door closer suitable

## Standard finish

- a) Aluminium
  - .02 silver stove-enamelled
  - .03 black stove-enamelled
  - .10 dark brown stove-enamelled
  - .70 plastic coated
- b) Aluminium, E5 treated
  - .31 KWS 1 silver anodised
  - .32 KWS 2 nickel silver anodised
  - .33 KWS 3 brass-coloured anodised
  - .37 KWS 5 dark brown anodised

## Packing Unit

1 piece

## Weight per piece

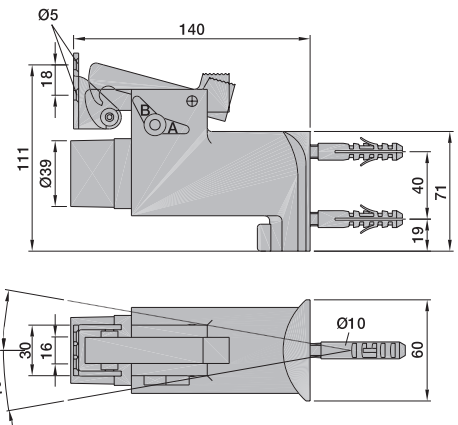
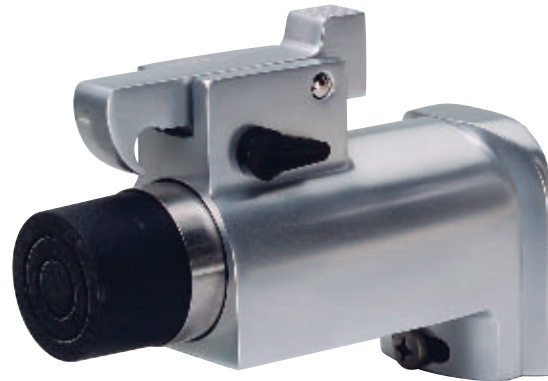
Aluminium 0.750 kg

## Function

The door should be pushed against the catch hook until it is locked in position. To release the door push it slightly against the buffer and operate the catch hook. Moving the switch from position A to B (see diagram) will interrupt the locking function of the door catch, with only the spring-loaded buffer remaining in operation. The door holder is progressively adjustable by 10° to the right and left, recommended especially for doors which do not open parallel to the wall.

## Mounting

The fastening strap with fixture should be screwed on the wall in the proposed position at the maximum possible distance from the hinged edge of the door. The holder element should be put on, set at the required angle (when opening the door it should hit the holder at an angle of 90°) and secured by a screw. The roller plate should be fitted on the door in the appropriate position.



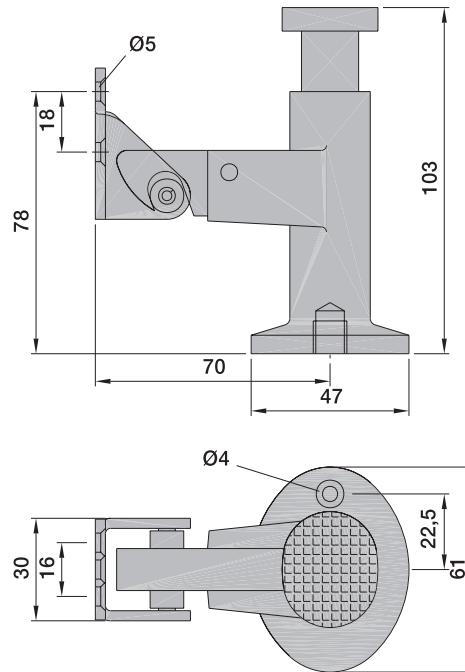
## Order example

Piece	Item No.	Finish
...piece	1095	02



# Door holders

1



**1047..** with hanger bolt for building in

- 1) Made of aluminium stove-enamelled or plastic-coated, with roller plate of steel
- 2) Made of aluminium anodised, with roller plate of stainless steel
- 3) Made of brass, with roller plate made of brass

Hanger bolt made of steel, electrogalvanised

On request this door holder is also available with a dowel screw (item no. 9104.06) instead of a hanger bolt.

## Application

Door width up to 900 mm  
 Door height up to 2000 mm  
 Door weight up to 40 kg  
 Door closer suitable

## Standard finish

- a) Aluminium
  - .02 silver stove-enamelled
  - .03 black stove-enamelled
  - .10 dark brown stove-enamelled
  - .70 plastic coated
- b) Aluminium, E5 treated
  - .31 KWS 1 silver anodised
  - .32 KWS 2 nickel silver anodised
  - .33 KWS 3 brass-coloured anodised
  - .37 KWS 5 dark brown anodised
- c) Brass
  - .62 dull brushed and colourless coated
  - .66 polished and colourless coated

## Packing Unit

1 piece

## Weight per piece

Aluminium 0.300 kg  
 Brass 0.650 kg

## Function

The door should be pushed against the catch hook until it is locked in position. A light pressure on the trigger bolt while simultaneously pushing the door against the holder releases the door.

## Mounting

The hanger bolt should be embedded in the floor in the required stop position at the maximum possible distance from the hinged edge of the door and a plug should be fitted matching the hole in the bottom part of the holder. Then the door holder can be screwed on the projecting threaded shank of the hanger bolt and secured by a screw to prevent the door holder from turning. The roller plate should be fitted to the door in the appropriate position.

## Order example

Piece	Item No.	Finish
...piece	1047	02

1049.. with anchor plate for building in  
1050.. for face fixing

- 1) Made of aluminium stove-enamelled or plastic-coated, with roller plate of steel
- 2) Made of aluminium anodised, with roller plate of stainless steel
- 3) Made of brass, with roller plate made of brass

Anchor plate (item no. 1049..) made of steel electrogalvanised

## Application

Door width up to 1000 mm  
Door height up to 2200 mm  
Door weight up to 80 kg  
Door closer suitable

## Standard finish

- a) Aluminium
  - .02 silver stove-enamelled
  - .03 black stove-enamelled
  - .10 dark brown stove-enamelled
  - .70 plastic coated
- b) Aluminium, E5 treated
  - .31 KWS 1 silver anodised
  - .32 KWS 2 nickel silver anodised
  - .33 KWS 3 brass-coloured anodised
  - .37 KWS 5 dark brown anodised

## Packing Unit

1 piece

Weight per piece	1049..	1050..
Aluminium	0.660 kg	0.490 kg
Brass	1.360 kg	1.190 kg

## Function

The door should be pushed against the catch hook until it is locked in position. A light pressure on the trigger bolt while simultaneously pushing the door against the holder releases the door.

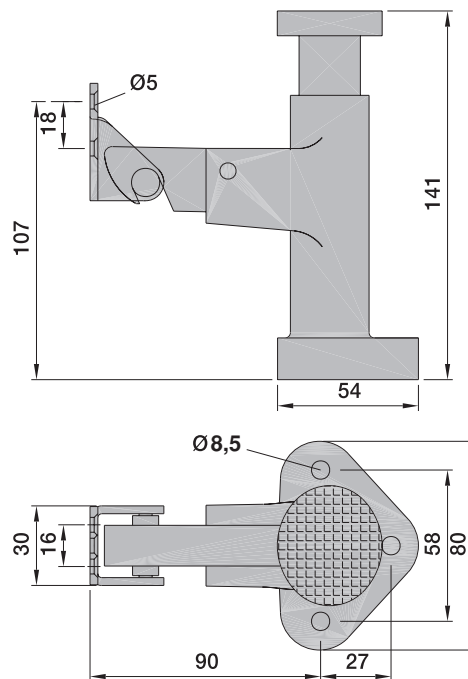
## Mounting

For building in:

The anchor plate should be embedded in the floor in the proposed position at the maximum possible distance from the hinged edge of the door. Once the grout has hardened, the door holder can be screwed on. The roller plate should be fitted on the door in the appropriate position.

For face fixing:

The holder should be mounted on the floor by 3 plugs and screws in the proposed position at the maximum possible distance from the hinged edge of the door. The roller plate should be fitted on the door in the appropriate position.



1

## Order example

Piece	Item No.	Finish
...piece	1049	02

# Door holders

1

## 1061.. catch hook with disconnecter

Made of aluminium or brass  
Buffer made of rubber, white

### Application

Door width up to 1000 mm  
Door height up to 2000 mm  
Door weight up to 50 kg  
Door closer suitable

### Standard finish

- a) Aluminium
  - .02 silver stove-enamelled
  - .03 black stove-enamelled
  - .10 dark brown stove-enamelled
  - .70 plastic coated
- b) Aluminium, E5 treated
  - .31 KWS 1 silver anodised
  - .32 KWS 2 nickel silver anodised
  - .33 KWS 3 brass-coloured anodised
  - .37 KWS 5 dark brown anodised
- c) Brass
  - .62 dull brushed and colourless coated
  - .66 polished and colourless coated

### Packing Unit

5 pieces

### Weight per piece

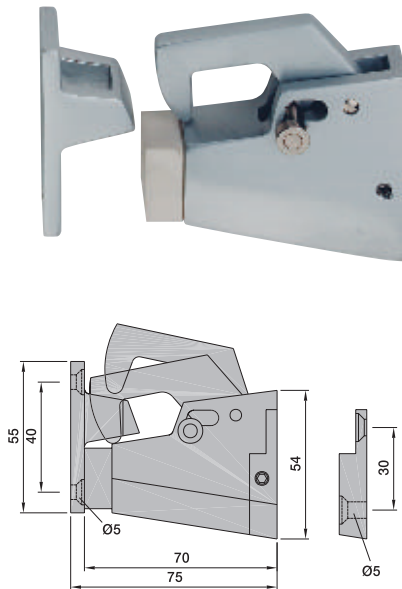
Aluminium 0.150 kg  
Brass 0.390 kg

### Function

The door should be pushed until the hook is locked in the eyelet. To release the door lift the catch hook. The function of the catch hook can be made inoperative, then the door holder merely acts as a door buffer.

### Mounting

The catch eyelet should be screwed on the door at the maximum possible distance from the hinged edge of the door. The fastening element should be fitted on the wall, the housing put on and secured by an attachment screw.



## 1062.. catch hook without disconnecter

Made of aluminium or brass  
Buffer made of rubber, white

### Application

Door width up to 1000 mm  
Door height up to 2000 mm  
Door weight up to 50 kg  
Door closer suitable

### Standard finish

- a) Aluminium
  - .02 silver stove-enamelled
  - .03 black stove-enamelled
  - .10 dark brown stove-enamelled
  - .70 plastic coated
- b) Aluminium, E5 treated
  - .31 KWS 1 silver anodised
  - .32 KWS 2 nickel silver anodised
  - .33 KWS 3 brass-coloured anodised
  - .37 KWS 5 dark brown anodised
- c) Brass
  - .62 dull brushed and colourless coated
  - .66 polished and colourless coated

### Packing Unit

5 pieces

### Weight per piece

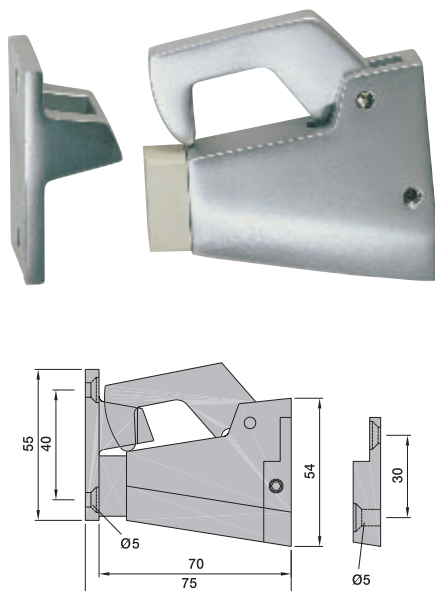
Aluminium 0.140 kg  
Brass 0.380 kg

### Function

The door should be pushed up until the hook is locked in the eyelet. To release the door lift the catch hook.

### Mounting

The catch eyelet should be screwed to the door at the maximum possible distance from the hinged edge of the door. The fastening element should be fitted on the wall, the housing put on and secured by a clamping screw.



### Order example

Piece	Item No.	Finish
...piece	1061	02

1073.. for 80 mm distance  
1173.. for 65 mm distance

Made of steel

## Application

Door width up to 1200 mm  
Door height up to 2200 mm  
Door weight up to 100 kg  
Door closer suitable

## Standard finish

### a) Steel

- .02 silver stove-enamelled
- .03 black stove-enamelled
- .06 electrogalvanised

## Packing Unit

10 pieces

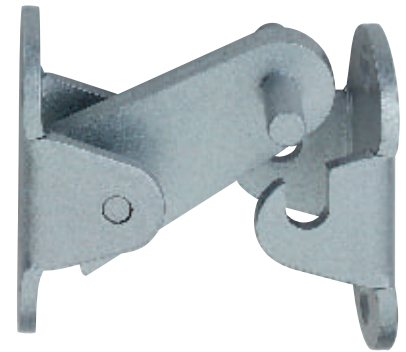
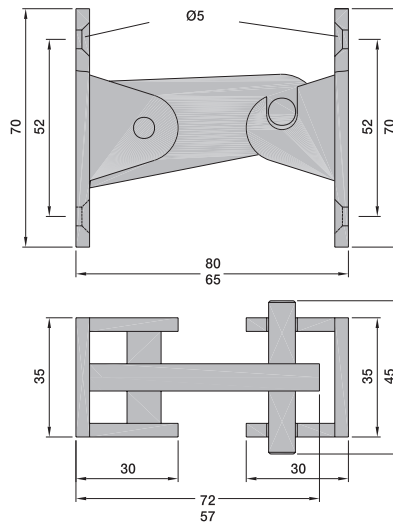
Weight per piece	1073..	1173..
Steel	0.310 kg	0.290 kg

## Function

The door should be pushed against the lever screwed to the wall so that the notches engage to the catch of the door. To release the door lift the lever slightly.

## Mounting

The catch should be screwed on the door at the maximum possible distance from the hinged edge of the door and the lever should be fastened on the wall in the appropriate position.



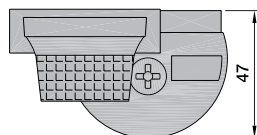
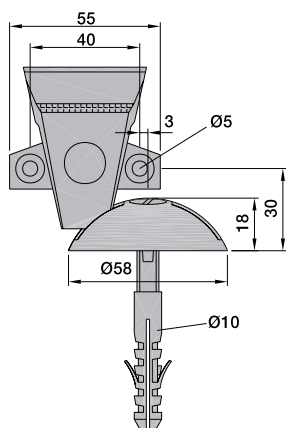
1

## Order example

Piece ...piece	Item No. 1073	Finish 06
-------------------	------------------	--------------

# Door holders

1



1058.. with fixings  
1059.. without fixings

Made of aluminium or brass with buffer of rubber, black

(available on request: buffer, white)

## Application

Door width up to 1000 mm  
Door height up to 2000 mm  
Door weight up to 50 kg  
Door closer suitable

## Standard finish

- a) Aluminium, E5 treated
  - .31 KWS 1 silver anodised
  - .32 KWS 2 nickel silver anodised
  - .33 KWS 3 brass-coloured anodised
  - .37 KWS 5 dark brown anodised
- b) Brass
  - .62 dull brushed and colourless coated
  - .66 polished and colourless coated
- c) Aluminium
  - .70 plastic coated

## Packing Unit

5 pieces

## Weight per piece

Aluminium 0.140 kg  
Brass 0.330 kg

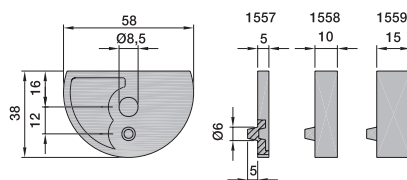
## Function

The door is held open by engaging the fixture into the recess of the floor part. By manipulating the catch in the opposite direction the door is released again. With the fixture in a neutral position the bottom part merely serves as a buffer.

## Mounting

The floor part should be screwed onto the floor in the appropriate position at the maximum possible distance from the hinged edge of the door. The fixture should be screwed on the door at a vertical distance: floor to centre screw hole: 30 mm, horizontal distance: centre screw hole of floor part to centre screw hole of fixture: 3 mm. An additional pin embedded in the floor prevents the floor part from turning.

For adjustment in height we recommend using pad no. 1557.. (5 mm) or no. 1558.. (10 mm) or 1559.. (15 mm).



1557.. Pad 5 mm high  
1558.. Pad 10 mm high  
1559.. Pad 15 mm high

## Order example

Piece	Item No.	Finish
...piece	1058	31

## 1060.. for doors with door closer

Made of aluminium  
Buffer made of rubber, black

### Application

Door width up to 1000 mm  
Door height up to 2000 mm  
Door weight up to 50 kg  
Door closer required

### Standard finish

- a) Aluminium
  - .02 silver stove-enamelled
  - .03 black stove-enamelled
  - .10 dark brown stove-enamelled
  - .70 plastic coated
- b) Aluminium, E5 treated
  - .31 KWS 1 silver anodised
  - .32 KWS 2 nickel silver anodised
  - .33 KWS 3 brass-coloured anodised
  - .37 KWS 5 dark brown anodised

### Packing Unit

8 pieces

### Weight per piece

Aluminium 0.130 kg

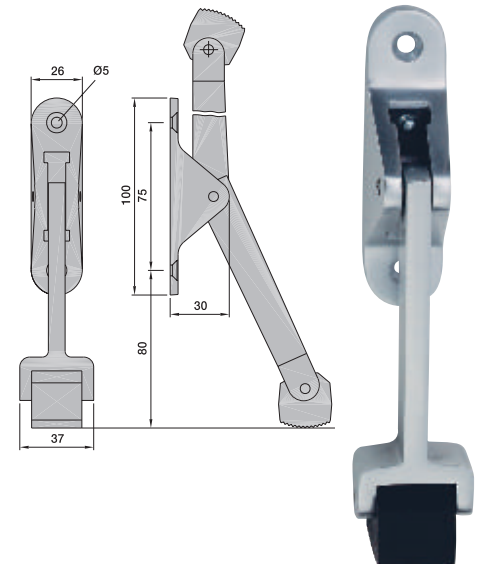
### Function

The door can be held open at any angle of aperture. When tilted down the lever prevents the door from being shut by the door closer. To release the door fold up the lever, which is then held up by a leaf spring.

### Mounting

The door catch should be fitted to the door using two screws on the side facing the closing direction and at the maximum possible distance from the hinged edge of the door. The distance between floor level and centre of lower screw hole has to be 80 mm.

To prevent abrasion on the lever the leaf spring should occasionally be greased.



## 1076.. for doors with door closer

Made of steel  
Stopper made of plastic, grey

### Application

Door width up to 1000 mm  
Door height up to 2000 mm  
Door weight up to 50 kg  
Door closer required

### Standard finish

- a) Steel
  - .02 silver stove-enamelled
  - .03 black stove-enamelled
  - .10 dark brown stove-enamelled

### Packing Unit

10 pieces

### Weight per piece

Aluminium 0.130 kg

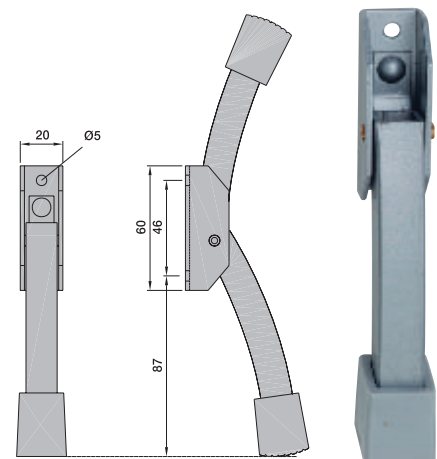
### Function

The door can be held open at any angle of aperture. When tilted down the lever prevents the door from being shut by the door closer. To release the door fold up the lever, which is then held up by a leaf spring.

### Mounting

The door catch should be fitted to the door using two screws on the side facing the closing direction and at the maximum possible distance from the hinged edge of the door. The distance between floor level and centre of lower screw hole has to be 87 mm.

To prevent abrasion on the lever the leaf spring should occasionally be greased.

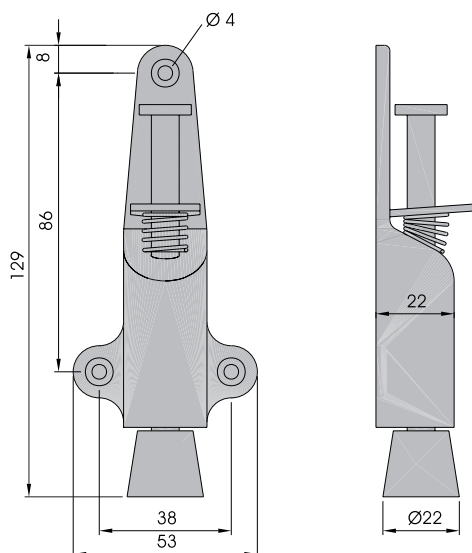


### Order example

Piece	Item No.	Finish
...piece	1060	02

# Door holders

1



1024.. 25 mm lift

1) Housing made of steel, push bolt of steel electrogalvanised

2) Housing and push bolt made of brass

3) Housing and other metal parts made of stainless steel

Stopper made of rubber, grey

## Application

Door width up to 900 mm

Door height up to 2000 mm

Door weight up to 25 kg

Door closer suitable

## Standard finish

### a) Steel

.02 silver stove-enamelled

.03 black stove-enamelled

.10 dark brown stove-enamelled

.70 plastic coated

### b) Brass

.62 dull brushed and colourless coated

.66 polished and colourless coated

### c) Stainless steel



.82 dull brushed

.83 polished

## Packing Unit

1 piece

## Weight per piece

Steel 0.100 kg

Brass 0.100 kg

Stainless steel 0.100 kg

## Function

The door can be held open at any angle of aperture.

Kick down the push bolt until the stopper is firmly pressed onto the floor. A light pressure on the tripping plate releases the door.

## Mounting

The door holder should be screwed on the door at the maximum possible distance from the hinged edge of the door. The distance from the bottom edge of the door to stopper has to be 5 - 10 mm.

## Order example

Piece	Item No.	Finish
...piece	1024	02

## 1025.. 25 mm lift

Housing made of aluminium, push bolt of stainless steel

Stopper made of rubber, grey

### Application

Door width up to 900 mm  
Door height up to 2000 mm  
Door weight up to 25 kg  
Door closer suitable

### Standard finish

- a) Aluminium, E5 treated
  - .31 KWS 1 silver anodised
  - .32 KWS 2 nickel silver anodised
  - .33 KWS 3 brass-coloured anodised
  - .37 KWS 5 dark brown anodised
- b) Aluminium
  - .70 plastic coated

### Packing Unit

1 piece

### Weight per piece

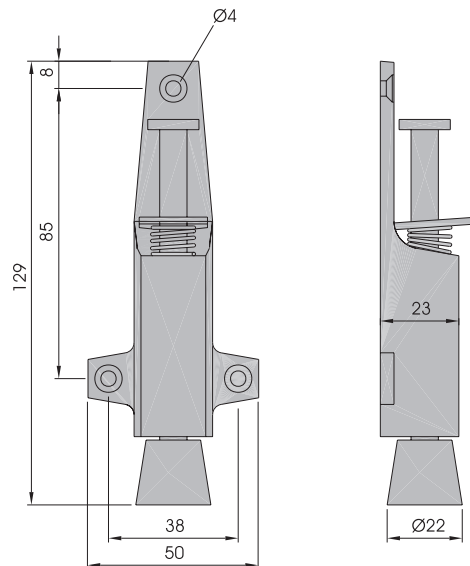
Aluminium 0.110 kg

### Function

The door can be held open at any angle of aperture. Kick down the push bolt until the stopper is firmly pressed onto the floor. A light pressure on the tripping plate releases the door.

### Mounting

The door holder should be screwed on the door at the maximum possible distance from the hinged edge of the door. The distance from the bottom edge of the door to stopper has to be 5 - 10 mm.



1

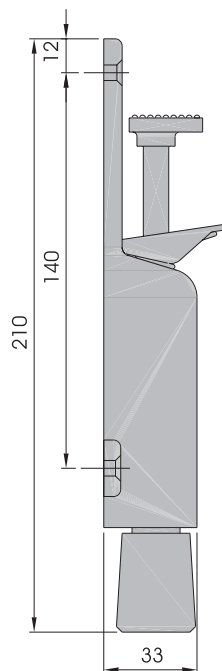
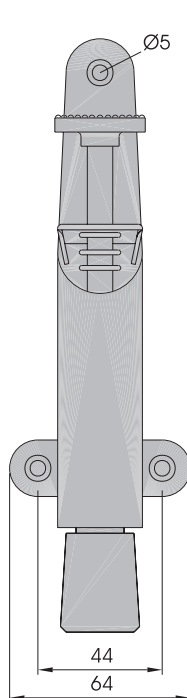
### Order example

Piece ...piece	Item No. 1025	Finish 31
-------------------	------------------	--------------



# Door holders

1



1026.. 30 mm lift

1028.. 50 mm lift

1) Housing made of steel, push bolt of steel electrogalvanised

2) Housing and push bolt made of brass

3) Housing and other metal parts made of stainless steel

Stopper made of rubber, grey

## Application

Door width up to 900 mm

Door height up to 2000 mm

Door weight up to 40 kg

Door closer suitable

## Standard finish

### a) Steel

.02 silver stove-enamelled

.03 black stove-enamelled

.10 dark brown stove-enamelled

.70 plastic coated

### b) Brass

.62 dull brushed and colourless coated

.66 polished and colourless coated

### c) Stainless steel



.82 dull brushed

.83 polished

## Packing Unit

1 piece

Weight per piece	1026..	1028..
Steel	0.320 kg	0.340 kg
Brass	0.330 kg	0.350 kg
Stainless steel	0.320 kg	0.340 kg

## Function

The door can be held open at any angle of aperture.

Kick down the push bolt until the stopper is firmly pressed onto the floor. A light pressure on the tripping plate releases the door.

## Mounting

The door holder should be screwed on the door at the maximum possible distance from the hinged edge of the door. The distance from the bottom edge of the door to stopper has to be 5 - 10 mm.

## Order example

Piece	Item No.	Finish
...piece	1026	02

## 1038.. 30 mm lift

with floor socket

- 1) Housing made of steel, push bolt of steel electro-galvanised
- 2) Housing and push bolt made of brass
- 3) Housing, push bolt and other metal parts made of stainless steel

Floor socket made of stainless steel

### Application

Door width up to 1000 mm  
 Door height up to 2500 mm  
 Door weight up to 100 kg  
 Door closer suitable

### Standard finish

- a) Aluminium
  - .02 silver stove-enamelled
  - .03 black stove-enamelled
  - .10 dark brown stove-enamelled
  - .70 plastic coated
- b) Brass
  - .62 dull brushed and colourless coated
  - .66 polished and colourless coated
- c) Stainless steel
  - .82 dull brushed
  - .83 polished



### Packing Unit

1 piece

### Weight per piece

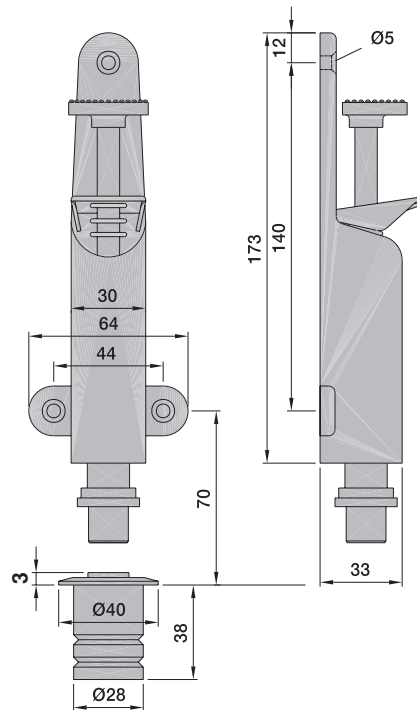
Steel 0.470 kg  
 Brass 0.480 kg  
 Stainless steel 0.470 kg

### Function

The door should be opened up to the socket embedded in the floor and held open by kicking down the push bolt. A light pressure on the tripping plate releases the door.

### Mounting

The door holder is to be screwed on the door at the maximum possible distance from the hinged edge of the door using 3 screws. The floor socket is to be embedded in the floor at the proposed locking point. The distance from the bottom edge of the door to stopper has to be 5 - 10 mm. Detailed positioning instructions and drilling template are supplied with each unit.

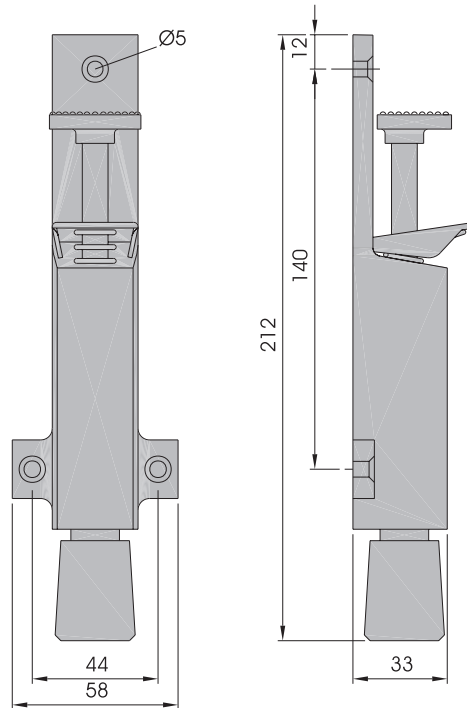


### Order example

Piece	Item No.	Finish
...piece	1038	02

# Door holders

1



**1027..** 30 mm lift - push bolt of stainless steel

**1029..** 50 mm lift - push bolt of stainless steel

**1089..** 30 mm lift - push bolt of steel electrogalvanised

**1093..** 50 mm lift - push bolt of steel electrogalvanised

Housing made of aluminium

Stopper made of rubber, grey

## Application

Door width up to 900 mm  
Door height up to 2000 mm  
Door weight up to 40 kg  
Door closer suitable

## Standard finish

- a) Aluminium (only 1089/1093)
  - .02 silver stove-enamelled
  - .03 black stove-enamelled
  - .10 dark brown stove-enamelled
  - .70 plastic coated
- b) Aluminium, E5 treated
  - .31 KWS 1 silver anodised
  - .32 KWS 2 nickel silver anodised
  - .33 KWS 3 brass-coloured anodised
  - .37 KWS 5 dark brown anodised

## Packing Unit

1 piece

<b>Weight per piece</b>	<b>1027..</b>	<b>1029..</b>
Aluminium	0.290 kg	0.310 kg

## Function

The door can be held open at any angle of aperture. Kick down the push bolt until the stopper is firmly pressed onto the floor. A light pressure on the tripping plate releases the door.

## Mounting

The door holder should be screwed on the door at the maximum possible distance from the hinged edge of the door. The distance from the bottom edge of the door to stopper has to be 5 - 10 mm.

## Order example

Piece	Item No.	Finish
...piece	1027	31

## 1039.. 30 mm lift

with floor socket

Housing made of aluminium

Push bolt made of stainless steel

Floor socket made of stainless steel

### Application

Door width up to 1000 mm

Door height up to 2500 mm

Door weight up to 100 kg

Door closer suitable

### Standard finish

- a) Aluminium, E5 treated
  - .31 KWS 1 silver anodised
  - .32 KWS 2 nickel silver anodised
  - .33 KWS 3 brass-coloured anodised
  - .37 KWS 5 dark brown anodised
- b) Aluminium
  - .70 plastic coated

### Packing Unit

1 piece

### Weight per piece

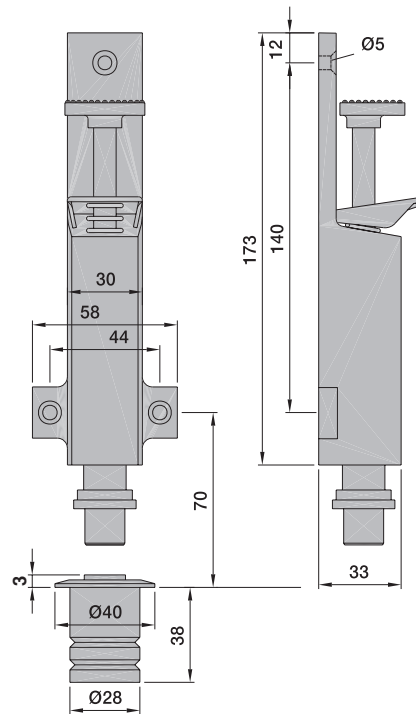
Aluminium 0.440 kg

### Function

The door should be opened up to the socket embedded in the floor and held open by kicking down the push bolt. A light pressure on the tripping plate releases the door.

### Mounting

The door holder is to be screwed on the door at the maximum possible distance from the hinged edge of the door using 3 screws. The floor socket is to be embedded in the floor at the proposed locking point. The distance from the bottom edge of the door to stopper has to be 5 - 10 mm. Detailed positioning instructions and drilling template are supplied with each unit.



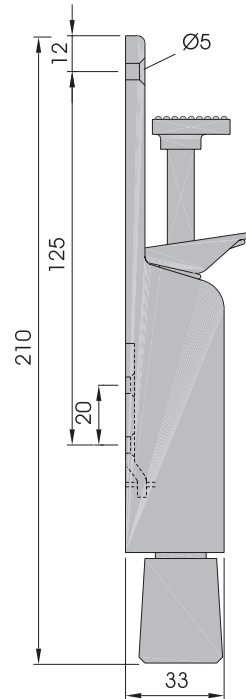
1

### Order example

Piece	Item No.	Finish
...piece	1039	31

# Door holders

1



1032.. 30 mm lift

1034.. 50 mm lift

1) Housing made of steel, push bolt of steel electrogalvanised

2) Housing and push bolt made of brass

3) Housing and other metal parts made of stainless steel

Stopper made of rubber, grey

## Application

Door width up to 900 mm  
Door height up to 2000 mm  
Door weight up to 40 kg  
Door closer suitable

## Standard finish

- a) Steel
  - .02 silver stove-enamelled
  - .03 black stove-enamelled
  - .10 dark brown stove-enamelled
  - .70 plastic coated
- b) Brass
  - .62 dull brushed and colourless coated
  - .66 polished and colourless coated
- c) Stainless steel
  - .82 dull brushed
  - .83 polished



## Packing Unit

1 piece

Weight per piece	1032..	1034..
Steel	0.340 kg	0.360 kg
Brass	0.350 kg	0.370 kg
Stainless steel	0.340 kg	0.360 kg

## Function

The door can be held open at any angle of aperture. Kick down the push bolt until the stopper is firmly pressed onto the floor. A light pressure on the tripping plate releases the door.

## Mounting

The door holder should be screwed on the door by a fastening strap at the maximum possible distance from the hinged edge of the door using 3 screws. The distance from the bottom edge of the door to stopper has to be 5 - 10 mm. Detailed positioning instructions and drilling template are supplied with each unit.

## Order example

Piece	Item No.	Finish
...piece	1032	02

## 1036.. 30 mm lift

with floor socket

- 1) Housing made of steel,  
push bolt of steel electrogalvanised
- 2) Housing and push bolt made of brass
- 3) Housing, push bolt and other metal parts made of  
stainless steel

Floor socket made of stainless steel

### Application

Door width up to 1000 mm  
Door height up to 2500 mm  
Door weight up to 100 kg  
Door closer suitable

### Standard finish

- a) Steel
  - .02 silver stove-enamelled
  - .03 black stove-enamelled
  - .10 dark brown stove-enamelled
  - .70 plastic coated
- b) Brass
  - .62 dull brushed and colourless coated
  - .66 polished and colourless coated
- c) Stainless steel
  - .82 dull brushed
  - .83 polished



### Packing Unit

1 piece

### Weight per piece

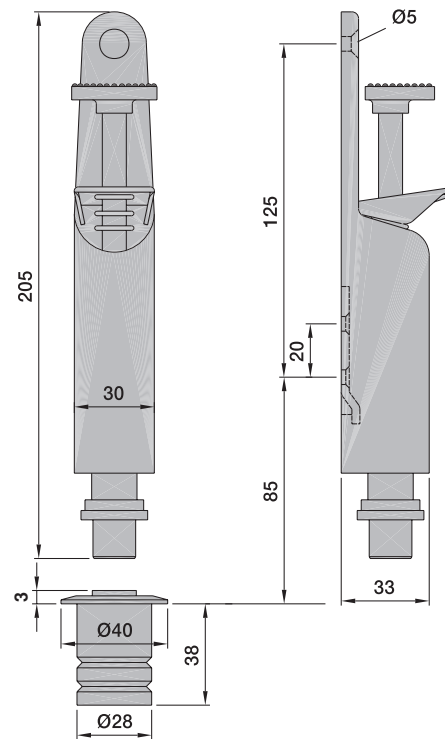
Steel 0.490 kg  
Brass 0.500 kg  
Stainless steel 0.490 kg

### Function

The door should be opened up to the socket embedded in the floor and held open by kicking down the push bolt. A light pressure on the tripping plate releases the door.

### Mounting

The door holder is to be screwed on the door by a fastening strap at the maximum possible distance from the hinged edge of the door using 3 screws. The floor socket is to be embedded in the floor at the proposed locking point. The distance from the bottom edge of the door to stopper has to be 5 - 10 mm. Detailed positioning instructions and drilling template are supplied with each unit.

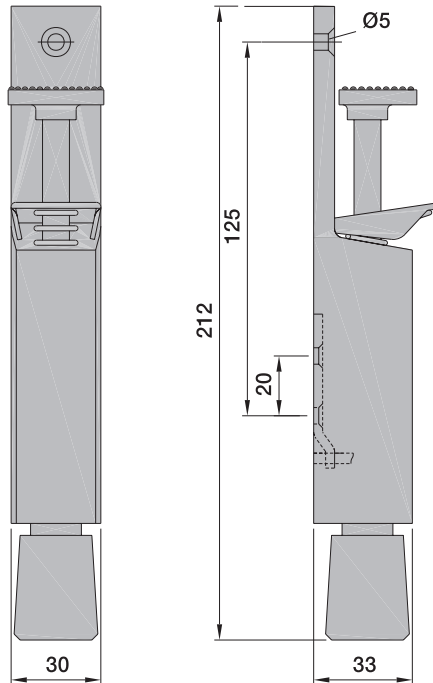


### Order example

Piece	Item No.	Finish
...piece	1036	02

# Door holders

1



- 1033.. 30 mm lift - push bolt of stainless steel
- 1035.. 50 mm lift - push bolt of stainless steel
- 1081.. 30 mm lift - push bolt of steel electrogalvanised
- 1082.. 50 mm lift - push bolt of steel electrogalvanised

Housing made of aluminium

Stopper made of rubber, grey

## Application

Door width up to 900 mm  
 Door height up to 2000 mm  
 Door weight up to 40 kg  
 Door closer suitable

## Standard finish

- a) Aluminium (only 1081/1082)
  - .02 silver stove-enamelled
  - .03 black stove-enamelled
  - .10 dark brown stove-enamelled
  - .70 plastic coated
- b) Aluminium, E5 treated
  - .31 KWS 1 silver anodised
  - .32 KWS 2 nickel silver anodised
  - .33 KWS 3 brass-coloured anodised
  - .37 KWS 5 dark brown anodised

## Packing Unit

1 piece

Weight per piece	1033..	1035..
Aluminium	0.320 kg	0.340 kg

## Function

The door can be held open at any angle of aperture. Kick down the push bolt until the stopper is firmly pressed onto the floor. A light pressure on the tripping plate releases the door.

## Mounting

The door holder should be screwed on the door by a fastening strap at the maximum possible distance from the hinged edge of the door using 3 screws. The distance from the bottom edge of the door to stopper has to be 5 - 10 mm. Detailed positioning instructions and drilling template are supplied with each unit.

## Order example

Piece	Item No.	Finish
...piece	1033	31



## 1037.. 30 mm lift

with floor socket  
Housing made of aluminium,  
push bolt made of stainless steel

Floor socket made of stainless steel

### Application

Door width up to 1000 mm  
Door height up to 2500 mm  
Door weight up to 100 kg  
Door closer suitable

### Standard finish

- a) Aluminium, E5 treated
  - .31 KWS 1 silver anodised
  - .32 KWS 2 nickel silver anodised
  - .33 KWS 3 brass-coloured anodised
  - .37 KWS 5 dark brown anodised
- b) Aluminium
  - .70 plastic coated

### Packing Unit

1 piece

### Weight per piece

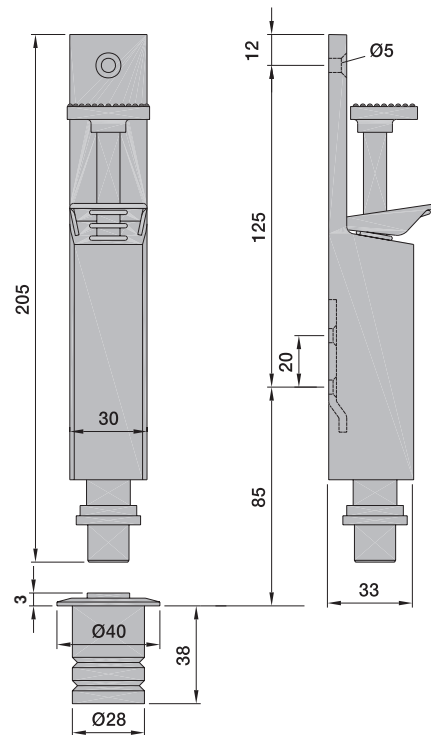
Aluminium 0.460 kg

### Function

The door should be opened up to the socket embedded in the floor and held open by kicking down the push bolt. A light pressure on the tripping plate releases the door.

### Mounting

The door holder is to be screwed on the door by a fastening strap at the maximum possible distance from the hinged edge of the door using 3 screws. The floor socket is to be embedded in the floor at the proposed locking point. The distance from the bottom edge of the door to stopper has to be 5 - 10 mm. Detailed positioning instructions and drilling template are supplied with each unit.



1

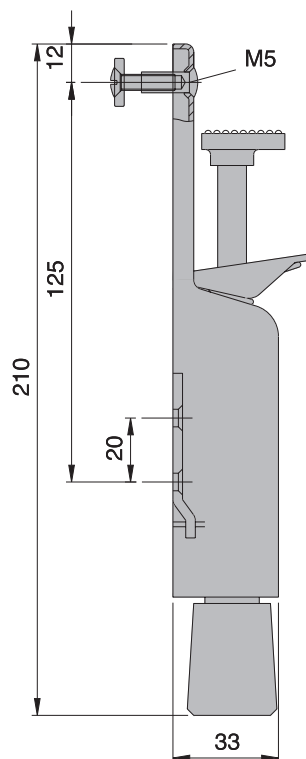
### Order example

Piece	Item No.	Finish
...piece	1037	31



# Door holders

1



**1030..** 30 mm lift, protected against dismantling

- 1) Housing made of steel,  
push bolt of steel electrogalvanised
- 2) Housing and push bolt made of brass
- 3) Housing and other metal parts made of stainless steel

Stopper made of rubber, grey

## Application

Door width up to 900 mm  
Door height up to 2000 mm  
Door weight up to 40 kg  
Door closer suitable

## Standard finish

- a) Steel
  - .02 silver stove-enamelled
  - .03 black stove-enamelled
  - .10 dark brown stove-enamelled
  - .70 plastic coated
- b) Brass
  - .62 dull brushed and colourless coated
  - .66 polished and colourless coated
- c) Stainless steel
  - .82 dull brushed
  - .83 polished

## Packing Unit

1 piece

## Weight per piece

Steel 0.340 kg  
Brass 0.350 kg  
Stainless steel 0.340 kg

## Function

The door can be held open at any angle of aperture. Kick down the push bolt until the stopper is firmly pressed onto the floor. A light pressure on the tripping plate releases the door.

## Mounting

The door holder should be screwed on the door by a fastening strap at the maximum possible distance from the hinged edge of the door using 2 screws. The screw with unslotted sleeve nut prevents unauthorized dismantling. The distance from the bottom edge of the door to stopper has to be 5 - 10 mm. Detailed positioning instructions and drilling template are supplied with each unit.

## Order example

Piece	Item No.	Finish
...piece	1030	02

## 1031.. 30 mm lift, protected against dismantling

Housing made of aluminium, push bolt of stainless steel

Stopper made of rubber, grey

### Application

Door width up to 900 mm  
Door height up to 2000 mm  
Door weight up to 40 kg  
Door closer suitable

### Standard finish

- a) Aluminium, E5 treated
  - .31 KWS 1 silver anodised
  - .32 KWS 2 nickel silver anodised
  - .33 KWS 3 brass-coloured anodised
  - .37 KWS 5 dark brown anodised
- b) Aluminium
  - .70 plastic coated

### Packing Unit

1 piece

### Weight per piece

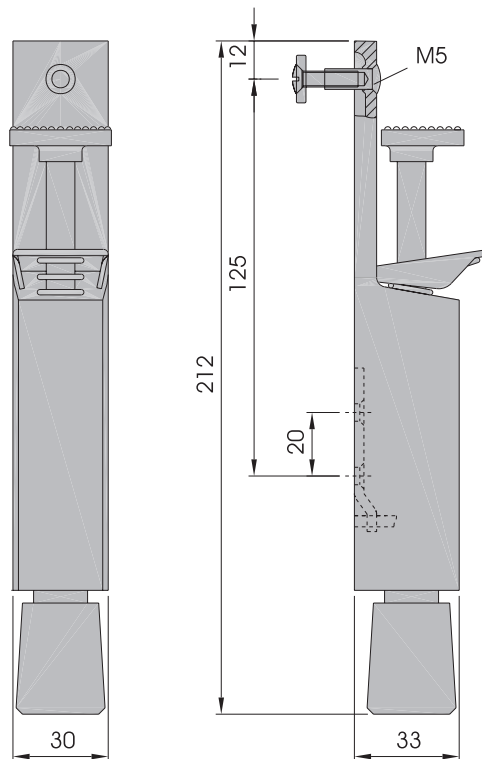
Aluminium 0.320 kg

### Function

The door can be held open at any angle of aperture. Kick down the push bolt until the stopper is firmly pressed onto the floor. A light pressure on the tripping plate releases the door.

### Mounting

The door holder should be screwed on the door by a fastening strap at the maximum possible distance from the hinged edge of the door using 2 screws. The screw with unslotted sleeve nut prevents unauthorized dismantling. The distance from the bottom edge of the door to stopper has to be 5 - 10 mm. Detailed positioning instructions and drilling template are supplied with each unit.

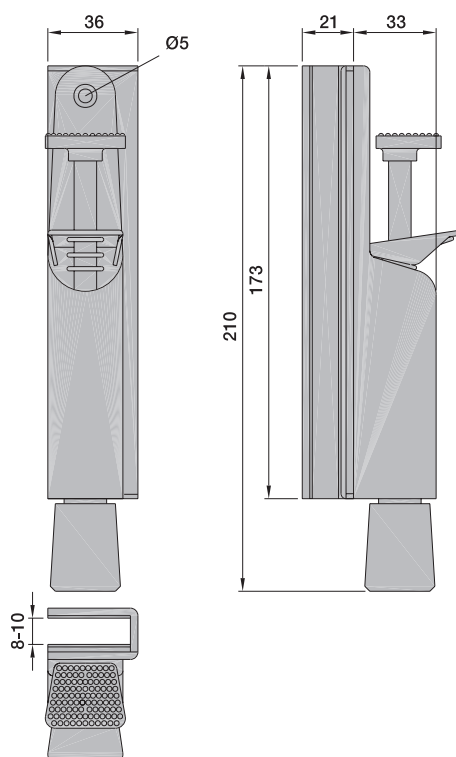


### Order example

Piece	Item No.	Finish
...piece	1031	31

# Door holders

1



1132.. 30 mm lift

With clamping part for full glass doors (8 - 10 mm)

1) Housing, push bolt and clamping part made of brass


2) Housing, push bolt, clamping part and other metal parts made of stainless steel

Stopper made of rubber, grey

## Application

Door width up to 900 mm  
Door height up to 2000 mm  
Door weight up to 40 kg  
Door closer suitable

## Standard finish

- a) Brass  
.62 dull brushed and colourless coated  
.66 polished and colourless coated  
b) Stainless steel  
  
.82 dull brushed  
.83 polished

## Packing Unit

1 piece

## Weight per piece

Brass 0.820 kg  
Stainless steel 0.790 kg

## Function

The door can be held open at any angle of aperture. Kick down the push bolt until the stopper is firmly pressed onto the floor. A light pressure on the tripping plate releases the door. Usable for rh and lh doors.

## Mounting

The clamping part should be put on the door and fastened. The holder mechanism should be screwed to the clamping bar, housing put on and secured by a screw. The distance from the bottom edge of the door to stopper has to be 5 -10 mm. It is not necessary to bore holes in the glass to fasten the door catch. Detailed instructions are supplied with each unit.

## Order example

Piece	Item No.	Finish
...piece	1132	62

## 1133.. 30 mm lift

With clamping part for full glass doors (8 - 10 mm)

Housing made of aluminium,  
clamping part of stainless steel, colour-matching  
Push bolt made of stainless steel

Stopper made of rubber, grey

### Application

Door width up to 900 mm  
Door height up to 2000 mm  
Door weight up to 40 kg  
Door closer suitable

### Standard finish

- a) Aluminium, E5 treated
  - .31 KWS 1 silver anodised
  - .32 KWS 2 nickel silver anodised
  - .33 KWS 3 brass-coloured anodised
  - .37 KWS 5 dark brown anodised
- b) Aluminium
  - .70 plastic coated

### Packing Unit

1 piece

### Weight per piece

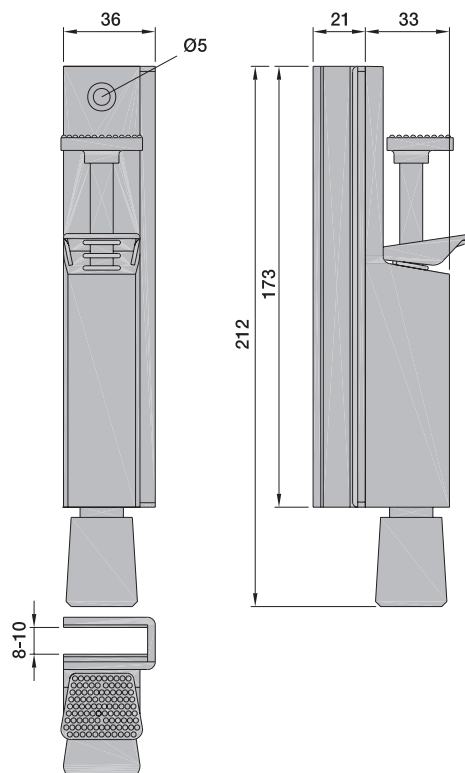
Aluminium 0.800 kg

### Function

The door can be held open at any angle of aperture.  
Kick down the push bolt until the stopper is firmly pressed onto the floor. A light pressure on the tripping plate releases the door.  
Usable for rh and lh doors.

### Mounting

The clamping part should be put on the door and fastened. The holder mechanism should be screwed to the clamping bar, housing put on and secured by a screw. The distance from the bottom edge of the door to stopper has to be 5 -10 mm. It is not necessary to bore holes in the glass to fasten the door catch. Detailed instructions are supplied with each unit.



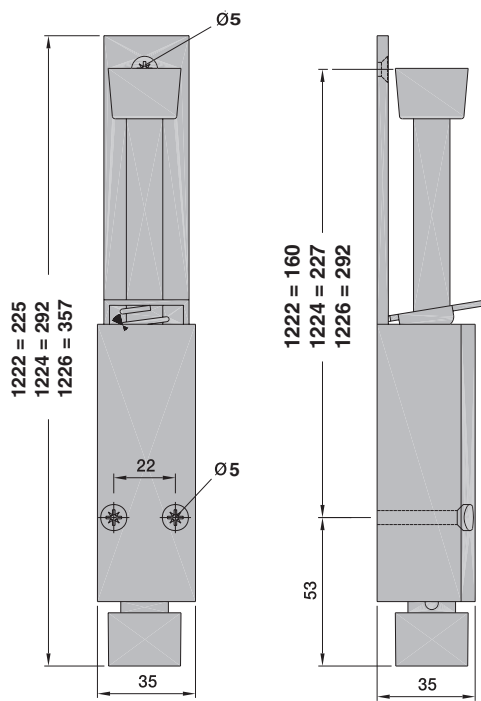
1

### Order example

Piece	Item No.	Finish
...piece	1133	31

# Door holders

1



1222.. 60 mm lift  
1224.. 90 mm lift  
1226.. 120 mm lift

Housing made of aluminium,  
other metal parts of **steel electrogalvanised**

Stopper made of rubber, black

## Application

Door width up to 900 mm  
Door height up to 2000 mm  
Door weight up to 40 kg  
Door closer suitable

## Standard finish

- a) Aluminium
  - .02 silver stove-enamelled
  - .03 black stove-enamelled
  - .04 golden stove-enamelled
  - .10 dark brown stove-enamelled
  - .70 plastic coated
- b) Aluminium, E6 treated
  - .41 KWS 1 silver anodised
  - .42 KWS 2 nickel-silver anodised
  - .43 KWS 3 brass-coloured anodised
  - .47 KWS 5 dark brown anodised

## Packing Unit

1 piece

Weight per piece	1222..	1224..	1226..
Aluminium	0.500 kg	0.650 kg	0.790 kg

## Function

The door can be held open at any angle of aperture.  
Kick down the push bolt until the stopper is firmly pressed onto the floor. A light pressure on the tripping plate releases the door.

## Mounting

The door holder should be screwed on the door at the maximum possible distance from the hinged edge of the door. The distance from the bottom edge of the door to stopper has to be 5 - 10 mm. Detailed positioning instructions and drilling template as well as fittings are supplied with each unit.

## Order example

Piece	Item No.	Finish
...piece	1222	02

1223.. 60 mm lift

1225.. 90 mm lift

1227.. 120 mm lift

Housing made of aluminium,  
other metal parts of **stainless steel**

Stopper made of rubber, black

## Application

Door width up to 900 mm

Door height up to 2000 mm

Door weight up to 40 kg

Door closer suitable

## Standard finish

### a) Aluminium

.02 silver stove-enamelled

.03 black stove-enamelled

.04 golden stove-enamelled

.10 dark brown stove-enamelled

.70 plastic coated

### b) Aluminium, E5 treated

.31 KWS 1 silver anodised

.32 KWS 2 nickel silver anodised

.33 KWS 3 brass-coloured anodised

.35 stainless steel effect anodised

.37 KWS 5 dark brown anodised

### c) Aluminium, E6 treated

.41 KWS 1 silver anodised

.42 KWS 2 nickel-silver anodised

.43 KWS 3 brass-coloured anodised

.47 KWS 5 dark brown anodised

## Packing Unit

1 piece

Weight per piece	1223..	1225..	1227..
Aluminium	0.500 kg	0.650 kg	0.790 kg

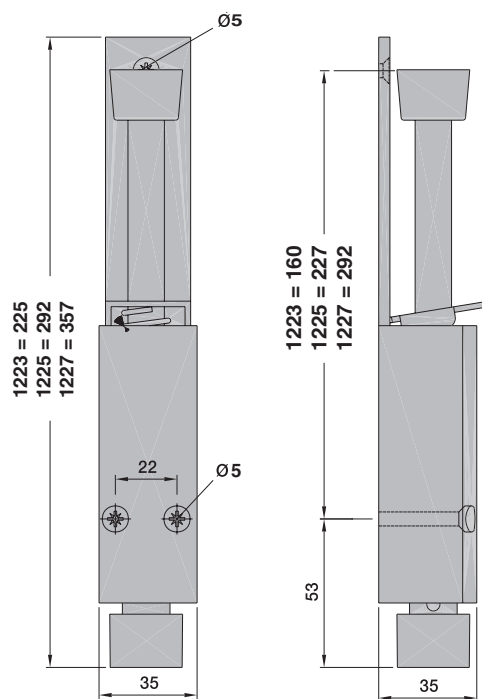
## Function

The door can be held open at any angle of aperture.

Kick down the push bolt until the stopper is firmly pressed onto the floor. A light pressure on the tripping plate releases the door.

## Mounting

The door holder should be screwed on the door at the maximum possible distance from the hinged edge of the door. The distance from the bottom edge of the door to stopper has to be 5 - 10 mm. Detailed positioning instructions and drilling template as well as fittings are supplied with each unit.



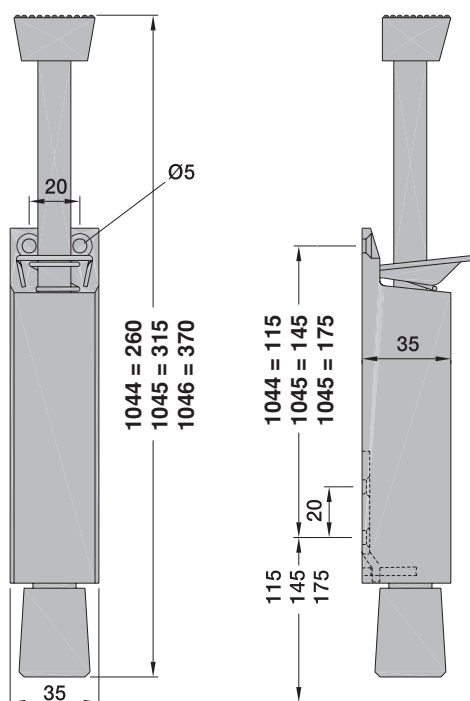
1

## Order example

Piece	Item No.	Finish
...piece	1223	02

# Door holders

1



1044.. 60 mm lift

1045.. 90 mm lift

1046.. 120 mm lift

1) Housing made of aluminium,  
push bolt of stainless steel

2) Housing and push bolt made of brass

Stopper made of rubber, grey

## Application

Door width up to 1200 mm

Door height up to 2200 mm

Door weight up to 80 kg

Door closer suitable

## Standard finish

### a) Aluminium

.02 silver stove-enamelled

.03 black stove-enamelled

.10 dark brown stove-enamelled

.70 plastic coated

### b) Aluminium, E5 treated

.31 KWS 1 silver anodised

.32 KWS 2 nickel silver anodised

.33 KWS 3 brass-coloured anodised

.35 stainless steel effect anodised

.37 KWS 5 dark brown anodised

## Packing Unit

1 piece

Weight per piece	1044..	1045..	1046..
Aluminium	0.470 kg	0.550 kg	0.610 kg
Brass	0.690 kg	0.800 kg	0.940 kg

## Function

The door can be held open at any angle of aperture.

Kick down the push bolt until the stopper is firmly pressed onto the floor. A light pressure on the tripping plate releases the door.

## Mounting

The door holder should be screwed on the door by a fastening strap at the maximum possible distance from the hinged edge of the door using 4 screws. The distance from the bottom edge of the door to stopper has to be 5 - 10 mm. Detailed positioning instructions and drilling template are supplied with each unit.

## Order example

Piece	Item No.	Finish
...piece	1044	02



1040.. 60 mm lift  
1041.. 90 mm lift  
1042.. 120 mm lift

with floor socket

- 1) Housing made of aluminium,  
push bolt of stainless steel
- 2) Housing and push bolt made of brass

Floor socket made of stainless steel

## Application

Door width up to 1200 mm  
Door height up to 2500 mm  
Door weight up to 100 kg  
Door closer suitable

## Standard finish

- a) Aluminium
  - .02 silver stove-enamelled
  - .03 black stove-enamelled
  - .10 dark brown stove-enamelled
  - .70 plastic coated
- b) Aluminium, E5 treated
  - .31 KWS 1 silver anodised
  - .32 KWS 2 nickel silver anodised
  - .33 KWS 3 brass-coloured anodised
  - .35 stainless steel effect anodised
  - .37 KWS 5 dark brown anodised

## Packing Unit

1 piece

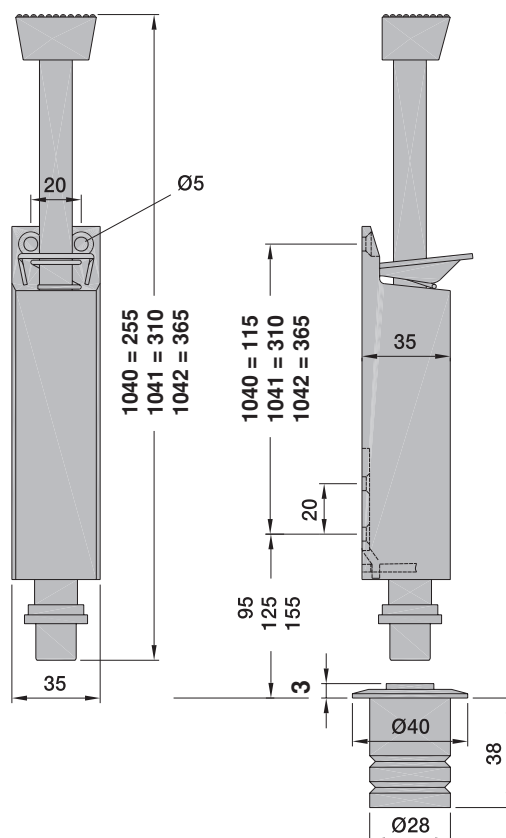
Weight per piece	1040..	1041..	1042..
Aluminium	0.650 kg	0.730 kg	0.790 kg
Brass	0.810 kg	0.960 kg	1.080 kg

## Function

The door should be opened up to the socket embedded in the floor and held open by kicking down the push bolt. A light pressure on the tripping plate releases the door.

## Mounting

The door holder is to be screwed on the door by a fastening strap at the maximum possible distance from the hinged edge of the door using 4 screws. The floor socket is to be embedded in the floor at the proposed locking point. The distance from the bottom edge of the door to stopper has to be 5 - 10 mm. Detailed positioning instructions and drilling template are supplied with each unit.



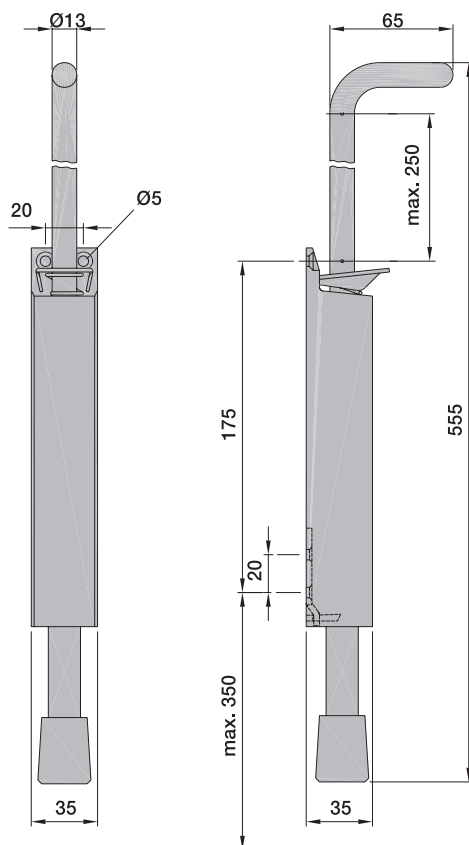
## Order example

Piece ...piece	Item No. 1040	Finish 02
-------------------	------------------	--------------



# Door holders

1



1048.. 250 mm lift

For extreme differences in height or for operation out of the wheel chair

- 1) Housing made of aluminium stove-enamelled or plastic-coated, rod of steel electrogalvanised
- 2) Housing made of aluminium anodised, rod of stainless steel

Stopper made of rubber, grey

## Application

Door width up to 1200 mm  
Door height up to 2200 mm  
Door weight up to 80 kg  
Door closer suitable

## Standard finish

- a) Aluminium
  - .02 silver stove-enamelled
  - .03 black stove-enamelled
  - .10 dark brown stove-enamelled
  - .70 plastic coated
- b) Aluminium, E5 treated
  - .31 KWS 1 silver anodised
  - .32 KWS 2 nickel silver anodised
  - .33 KWS 3 brass-coloured anodised
  - .35 stainless steel effect anodised
  - .37 KWS 5 dark brown anodised

## Packing Unit

1 piece

## Weight per piece

Aluminium 0.920 kg

## Function

The door can be held open at any angle of aperture. Press down the rod until the stopper is firmly pressed onto the floor. A light pressure on the tripping plate while simultaneously lifting the rod releases the door.

## Mounting

The door holder should be screwed on the door by a fastening strap at the maximum possible distance from the hinged edge of the door using 4 screws. The distance from the bottom edge of the door to stopper has to be 20 mm. Detailed positioning instructions and drilling template are supplied with each unit.

## Order example

Piece	Item No.	Finish
...piece	1048	02

## 1043.. 120 mm lift

Made of steel, stopper made of rubber, black

**DUE TO ITS DIMENSION (445 mm) AND DEAD WEIGHT (1.9 kg) THIS DOOR HOLDER SHOULD BE USED ONLY FOR EXTREMELY HEAVY DOORS OR GATES.**

### Application

Door width up to 1500 mm  
Door height up to 2500 mm  
Door weight up to 200 kg  
Door closer suitable

### Standard finish

- a) Steel
  - .02 silver stove-enamelled
  - .03 black stove-enamelled
  - .10 dark brown stove-enamelled

### Packing Unit

1 piece

### Weight per piece

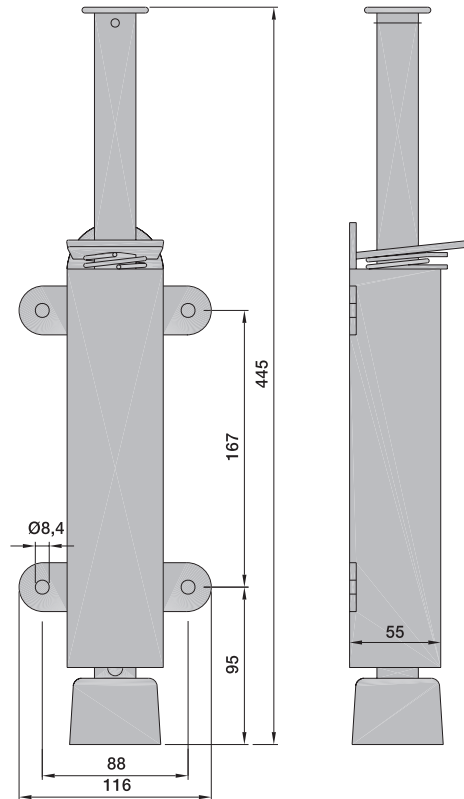
Steel 1.900 kg

### Function

The door can be held open at any angle of aperture. Kick down the push bolt until the stopper is firmly pressed on the floor. A light pressure on the tripping plate releases the door.

### Mounting

The door holder should be screwed on the door at the maximum possible distance from the hinged edge of the door. The distance from the bottom edge of the door to stopper has to be 20 mm.

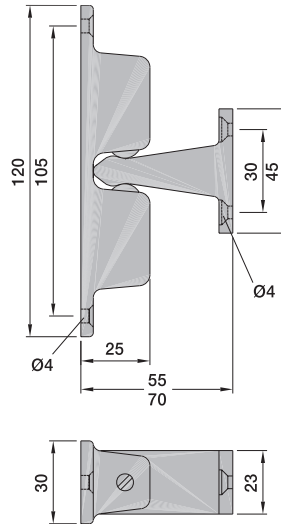


### Order example

Piece	Item No.	Finish
...piece	1043	02

# Door holders

1



1055.. for 55 mm clearance

1083.. for 70 mm clearance

With engaging part for face fixing

1) Catch part made of steel, engaging part of aluminium

2) Catch part and engaging part made of brass

## Application

Door width up to 1000 mm

Door height up to 2000 mm

Door weight up to 80 kg

Door closer suitable

## Standard finish

a) Steel / Aluminium

.02 silver stove-enamelled

.03 black stove-enamelled

.10 dark brown stove-enamelled

.70 plastic coated

b) Brass

.62 dull brushed and colourless coated

.63 nickelized

.66 polished and colourless coated

## Packing Unit

5 pieces

## Weight per piece

Brass 0.220 kg

Steel / Aluminium 0.150 kg

## Function

By simply pushing or pulling the door is held open or released.

## Mounting

The catch part should be mounted on the door at the maximum possible distance from the hinged edge of the door. The engaging part should be screwed on the wall in the appropriate position. A horizontal fastening of the door holder ensures the operativeness of the door even if it should rise or sag after mounting. The compression of the balls can be adjusted by setscrews.

## Order example

Piece	Item No.	Finish
...piece	1055	02

## 1056.. with engaging part for building in the wall

Catch part made of steel, engaging part of aluminium

### Application

Door width up to 1000 mm  
Door height up to 2000 mm  
Door weight up to 80 kg  
Door closer suitable

### Standard finish

- a) Steel / Aluminium
- .02 silver stove-enamelled
  - .03 black stove-enamelled
  - .10 dark brown stove-enamelled
  - .70 plastic coated

### Packing Unit

5 pieces

### Weight per piece

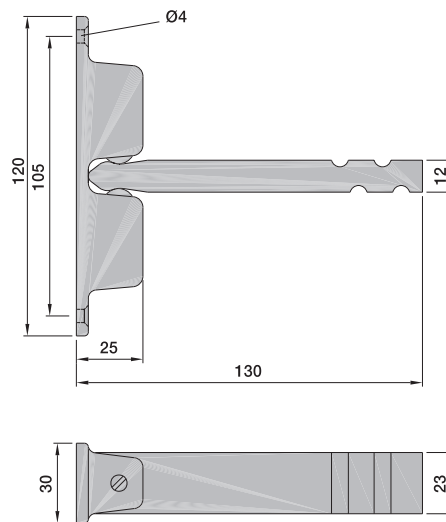
Steel / Aluminium 0.210 kg

### Function

By simply pushing or pulling the door is held open or released.

### Mounting

The catch part should be screwed on the door at the maximum possible distance from the hinged edge of the door. The engaging part should be fixed on the wall in the appropriate position. A horizontal fastening of the door holder ensures the operativeness of the door even if it should rise or sag after mounting. The compression of the balls can be adjusted by setscrews.



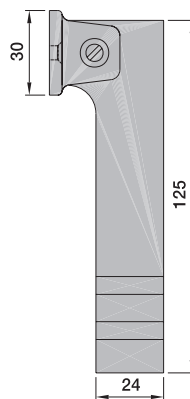
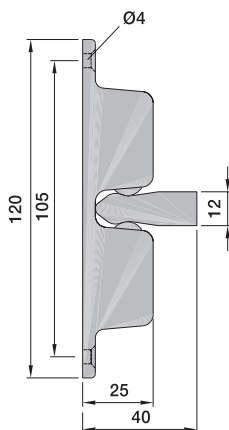
1

### Order example

Piece	Item No.	Finish
...piece	1056	02

# Door holders

1



**1057..** with engaging part for building in the floor

Catch part made of steel, engaging part of aluminium

## Application

Door width up to 1000 mm

Door height up to 2000 mm

Door weight up to 80 kg

Door closer suitable

## Standard finish

a) Steel / Aluminium

.02 silver stove-enamelled

.03 black stove-enamelled

.10 dark brown stove-enamelled

.70 plastic coated

## Packing Unit

5 pieces

## Weight per piece

Steel / Aluminium 0.210 kg

## Function

By simply pushing or pulling the door is held open or released.

## Mounting

The catch part should be screwed on the door at the maximum possible distance from the hinged edge of the door. The engaging part should be fixed on the floor in the appropriate position. A horizontal fastening of the door holder ensures the operativeness of the door even if it should rise or sag after mounting. The compression of the balls can be adjusted by setscrews.

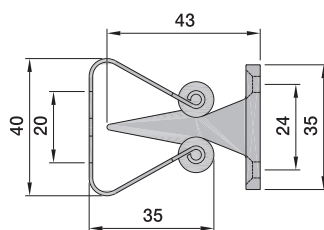
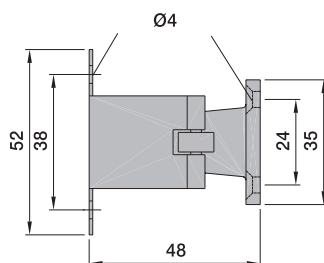
## Order example

Piece	Item No.	Finish
...piece	1057	02



# Door holders

1



## 1064.. with keep for face fixing

Catch spring made of steel, rollers made of plastic  
Keep made of aluminium

### Application

Door width up to 800 mm  
Door height up to 2000 mm  
Door weight up to 25 kg  
Door closer suitable

### Standard finish

- a) Steel / Aluminium
  - .02 silver stove-enamelled
  - .03 black stove-enamelled

### Packing Unit

10 pieces

### Weight per piece

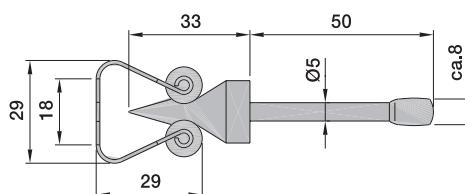
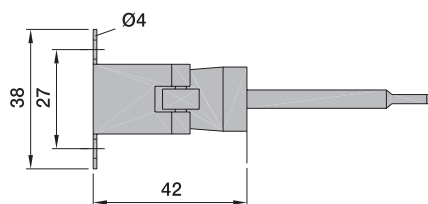
Steel / Aluminium 0.050 kg

### Function

By simply pushing or pulling the door is held open or released.

### Mounting

The catch element should be screwed vertically on the door at the maximum possible distance from the hinged edge of the door. The keep should be screwed on the wall.



## 1065.. with keep for building in

Catch spring made of steel, rollers made of plastic  
Keep made of aluminium

### Application

Door width up to 800 mm  
Door height up to 2000 mm  
Door weight up to 20 kg  
Door closer unsuitable

### Standard finish

- a) Steel / Aluminium
  - .02 silver stove-enamelled
  - .03 black stove-enamelled

### Packing Unit

10 pieces

### Weight per piece

Steel / Aluminium 0.030 kg

### Function

By simply pushing or pulling the door is held open or released.

### Mounting

The catch element should be screwed vertically on the door at the maximum possible distance from the hinged edge of the door. The keep should be embedded in the wall.

### Order example

Piece	Item No.	Finish
...piece	1064	02

## 1165.. with keep for building in

Catch spring made of steel, rollers made of plastic  
Keep made of aluminium

### Application

Door width up to 800 mm  
Door height up to 2000 mm  
Door weight up to 20 kg  
Door closer unsuitable

### Standard finish

- a) Steel / Aluminium  
.02 silver stove-enamelled  
.03 black stove-enamelled

### Packing Unit

10 pieces

### Weight per piece

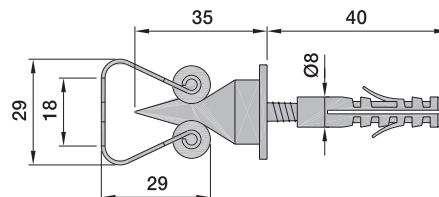
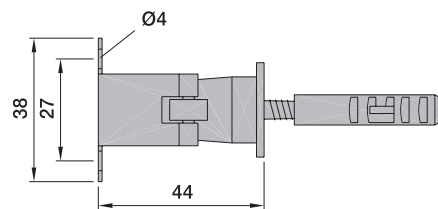
Steel / Aluminium 0.030 kg

### Function

By simply pushing or pulling the door is held open or released.

### Mounting

The catch element should be screwed vertically on the door at the maximum possible distance from the hinged edge of the door. The keep should be screwed in the wall.



## 1066.. with keep for face fixing

Catch spring made of steel, rollers made of plastic  
Keep made of aluminium

### Application

Door width up to 800 mm  
Door height up to 2000 mm  
Door weight up to 20 kg  
Door closer unsuitable

### Standard finish

- a) Steel / Aluminium  
.02 silver stove-enamelled  
.03 black stove-enamelled

### Packing Unit

10 pieces

### Weight per piece

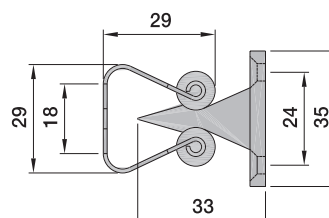
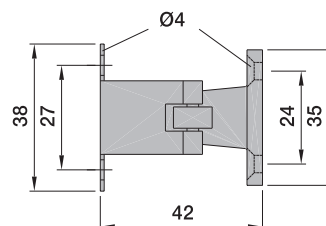
Steel / Aluminium 0.025 kg

### Function

By simply pushing or pulling the door is held open or released.

### Mounting

The catch element should be screwed vertically on the door at the maximum possible distance from the hinged edge of the door. The keep should be screwed on the wall.



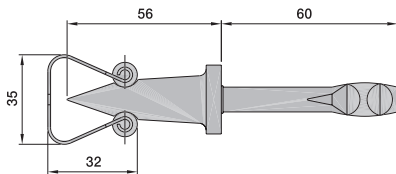
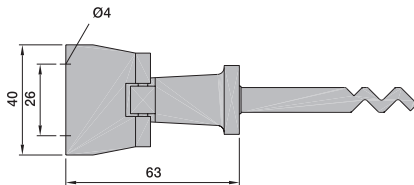
### Order example

Piece	Item No.	Finish
...piece	1165	02



# Door holders

1



## 1067.. with keep for building in

1) Catch spring made of steel with keep of aluminium

2) Catch spring and keep made of brass

Rollers made of brass

### Application

Door width up to 1000 mm

Door height up to 2000 mm

Door weight up to 50 kg

Door closer suitable

### Standard finish

a) Steel / Aluminium

.02 silver stove-enamelled

.03 black stove-enamelled

b) Brass

.62 dull brushed and colourless coated

.63 nickelized

.66 polished and colourless coated

### Packing Unit

10 pieces

### Weight per piece

Steel / Aluminium 0.150 kg

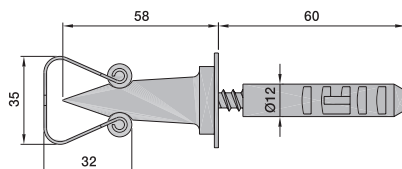
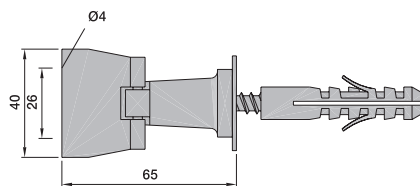
Brass 0.240 kg

### Function

By simply pushing or pulling the door is held open or released.

### Mounting

The catch element should be screwed vertically on the door at the maximum possible distance from the hinged edge of the door. The keep should be embedded in the wall.



## 1167.. with keep for building in

1) Catch spring made of steel with keep of aluminium

2) Catch spring and keep made of brass

Rollers made of brass

### Application

Door width up to 1000 mm

Door height up to 2000 mm

Door weight up to 50 kg

Door closer suitable

### Standard finish

a) Steel / Aluminium

.02 silver stove-enamelled

.03 black stove-enamelled

b) Brass

.62 dull brushed and colourless coated

.63 nickelized

.66 polished and colourless coated

### Packing Unit

10 pieces

### Weight per piece

Steel / Aluminium 0.090 kg

Brass 0.220 kg

### Function

By simply pushing or pulling the door is held open or released.

### Mounting

The catch element should be screwed vertically on the door at the maximum possible distance from the hinged edge of the door. The keep should be screwed in the wall.

### Order example

Piece	Item No.	Finish
...piece	1067	02

## 1068.. with keep for face fixing

1) Catch spring made of steel with keep of aluminium

2) Catch spring and keep made of brass

Rollers made of brass

### Application

Door width up to 1000 mm

Door height up to 2000 mm

Door weight up to 50 kg

Door closer suitable

### Standard finish

a) Steel / Aluminium

.02 silver stove-enamelled

.03 black stove-enamelled

b) Brass

.62 dull brushed and colourless coated

.63 nickelized

.66 polished and colourless coated

### Packing Unit

10 pieces

### Weight per piece

Steel / Aluminium 0.080 kg

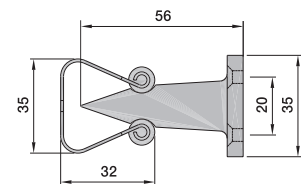
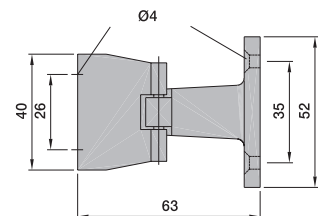
Brass 0.190 kg

### Function

By simply pushing or pulling the door is held open or released.

### Mounting

The catch element should be screwed vertically on the door at the maximum possible distance from the hinged edge of the door. The keep should be screwed on the wall.



## 1072.. with keep for face fixing

Catch spring,  
mounting plate and keep made of steel

### Application

Door width up to 1000 mm

Door height up to 2000 mm

Door weight up to 50 kg

Door closer suitable

### Standard finish

a) Steel

.02 silver stove-enamelled

.03 black stove-enamelled

### Packing Unit

10 pieces

### Weight per piece

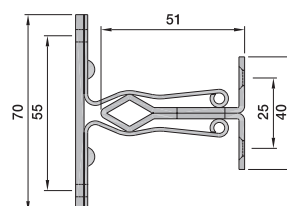
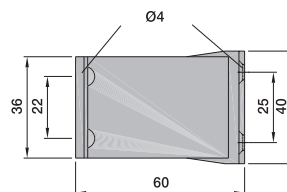
Steel 0.200 kg

### Function

By simply pushing or pulling the door is held open or released.

### Mounting

The catch element should be screwed vertically on the door at the maximum possible distance from the hinged edge of the door. The keep should be screwed on the wall.



### Order example

Piece	Item No.	Finish
...piece	1068	02

# Door brake

1017..

With adjustable cushioning effect,  
especially suitable for garage doors  
Made of steel or stainless steel

## Application

Door width up to 1200 mm  
Door height up to 2200 mm  
Door weight up to 100 kg  
Door closer unsuitable

## Standard finish

- a) Steel
  - .06 electrogalvanised
- b) Stainless steel
  - .82 dull brushed
  - .83 polished

## Packing Unit

1 piece

## Weight per piece

Steel 0.830 kg  
Stainless steel 0.710 kg

## Function

By overcoming the brake power, the door can be opened up to 125° and can be locked in any position within this range.

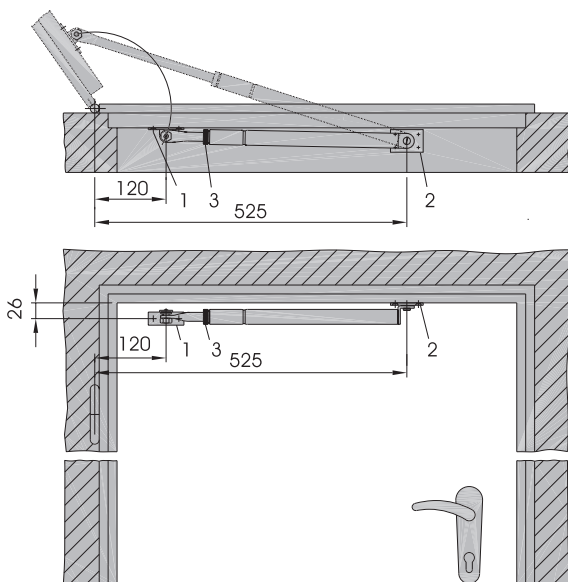
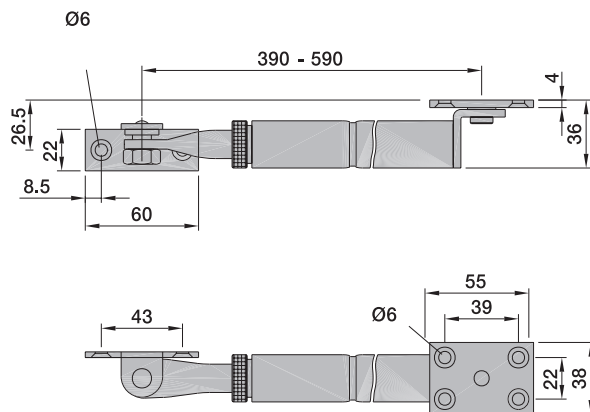
The brake power is adjustable by turning the knurled screw (3).

## Mounting

The shifting square (1) should be screwed on the door at 120 mm distance, measured between the middle of the hinge plate to centre of hexagon nut. The distance from the edge of the door frame to the centre of the screw holes should be 26 mm. The mounting plate (2) should be screwed underneath the door frame at 525 mm distance from centre hinge plate to centre pivot. There should be a distance of 2 - 3 mm between closed door and mounting plate (2). Detailed instructions are supplied with each unit.

This door brake must not be used as limit stop.

1



## Order example

Piece	Item No.	Finish
...piece	1017	06

- 1301.. 105 mm - for gates up to 80 kg  
 1303.. 117 mm - for gates up to 100 kg  
 1305.. 120 mm - for gates up to 150 kg

For anchor fixing in the floor

Made of malleable cast iron, stove-enamelled with rivet of steel, hot galvanised with rivet of brass

Catch angle made of steel

## Standard finish

- a) Malleable cast iron  
 .03 black stove-enamelled  
 .07 hot galvanised

## Packing Unit

2 pieces

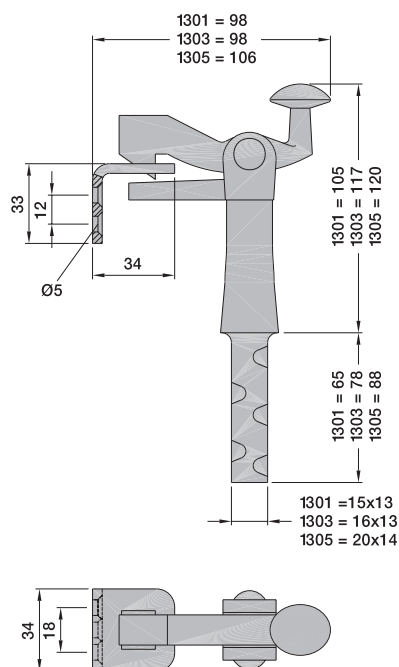
Weight per piece	1301..	1303..	1305..
Malleable cast iron	0.480 kg	0.580 kg	0.780 kg

## Function

The gate is automatically held open by pushing it against the catch hook. Push lightly the tripping end of the catch hook to release the gate.

## Mounting

The gate holder should be embedded in the floor at the maximum possible distance from the hinged edge of the gate. The catch angle should be fitted to the gate in the appropriate position with 4 mm distance above the stop plate of the gate holder. The catch hole of the angle should be above the screw holes. When opening the gate the catch angle then simultaneously acts as stopper.



1

## Order example

Piece	Item No.	Finish
...piece	1301	03

# Gate holders

1



- 1302.. 110 mm - for gates up to 80 kg
- 1304.. 125 mm - for gates up to 100 kg
- 1306.. 135 mm - for gates up to 150 kg

For anchor fixing in the wall

Made of malleable cast iron, stove-enamelled with rivet of steel, hot galvanised with rivet of brass

Catch angle made of steel

## Standard finish

- a) Malleable cast iron
  - .03 black stove-enamelled
  - .07 hot galvanised

## Packing Unit

2 pieces

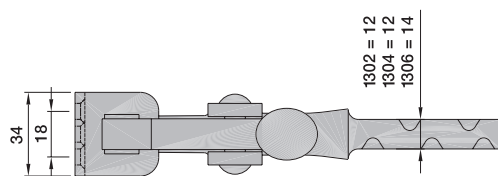
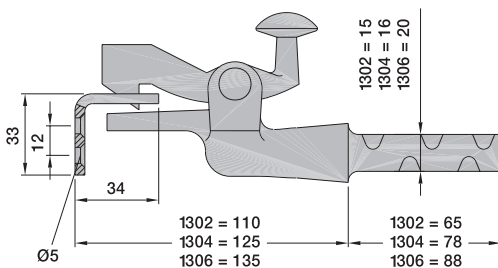
Weight per piece	1302..	1304..	1306..
Malleable cast iron	0.470 kg	0.570 kg	0.780 kg

## Function

The gate is automatically held open by pushing it against the catch hook. Push lightly the tripping end of the catch hook to release the gate.

## Mounting

The gate holder should be embedded in the wall at the maximum possible distance from the hinged edge of the gate. The catch angle should be fitted to the gate in the appropriate position with 4 mm distance above the stop plate of the gate holder. The catch hole of the angle should be above the screw holes. When opening the gate the catch angle then simultaneously acts as stopper.



## Order example

Piece	Item No.	Finish
...piece	1302	03

## 1307.. for gates up to 100 kg

For face fixing on the floor

Made of malleable cast iron, stove-enamelled with rivet of steel, hot galvanised with rivet of brass

Catch angle made of steel

### Standard finish

- a) Malleable cast iron
- .03 black stove-enamelled
- .07 hot galvanised

### Packing Unit

2 pieces

### Weight per piece

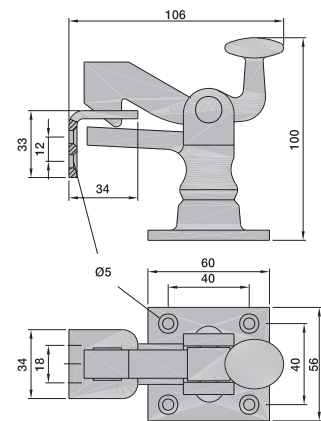
Steel 0.620 kg

### Function

The gate is automatically held open by pushing it against the catch hook. Push lightly the tripping end of the catch hook to release the gate.

### Mounting

The gate holder should be fastened on the floor at the maximum possible distance from the hinged edge of the gate using 4 plugs and screws. The catch angle should be fitted to the gate in the appropriate position with 4 mm distance above the stop plate of the gate holder. The catch hole of the angle should be above the screw holes. When opening the gate the catch angle then simultaneously acts as stopper.



## 1308.. for gates up to 100 kg

For face fixing on the wall

Made of malleable cast iron, stove-enamelled with rivet of steel, hot galvanised with rivet of brass

Catch angle made of steel

### Standard finish

- a) Malleable cast iron
- .03 black stove-enamelled
- .07 hot galvanised

### Packing Unit

2 pieces

### Weight per piece

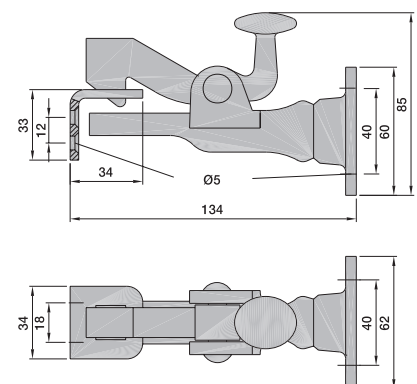
Malleable cast iron 0.700 kg

### Function

The gate is automatically held open by pushing it against the catch hook. Push lightly the tripping end of the catch hook to release the gate.

### Mounting

The gate holder should be fastened on the wall at the maximum possible distance from the hinged edge of the gate using 4 plugs and screws. The catch angle should be fitted to the gate in the appropriate position with 4 mm distance above the stop plate of the gate holder. The catch hole of the angle should be above the screw holes. When opening the gate the catch angle then simultaneously acts as stopper.

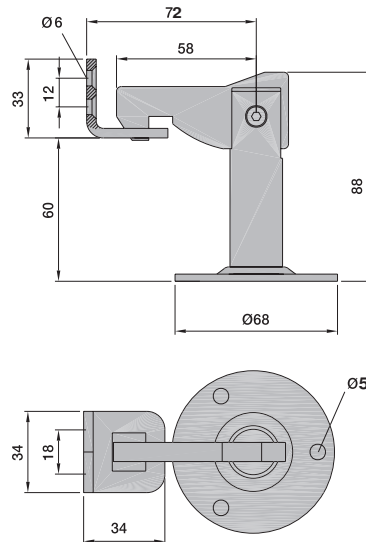


### Order example

Piece	Item No.	Finish
...piece	1307	07

# Gate holders

1



1311.. for gates up to 100 kg

For face fixing on the floor

Made of steel or stainless steel, easily convertible

## Standard finish

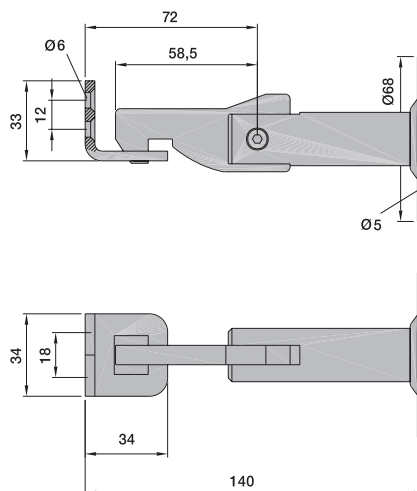
- a) Steel
  - .02 silver stove-enamelled
  - .03 black stove-enamelled
- b) Stainless steel
  - .82 dull brushed

## Function

The gate is automatically held open by pushing it against the catch hook. Push lightly the tripping end of the catch hook to release the gate.

## Mounting

The gate holder should be fastened on the floor at the maximum possible distance from the hinged edge of the gate using 3 plugs and screws. The catch angle should be fitted to the gate in the appropriate position with 3 screws. The catch hole of the angle should be below the screw holes. The gate holder can be converted from floor to wall mounting by unscrewing the arbor and shifting the catch hook.



1312.. for gates up to 100 kg

For face fixing on the wall

Made of steel or stainless steel, easily convertible

## Standard finish

- a) Steel
  - .02 silver stove-enamelled
  - .03 black stove-enamelled
- b) Stainless steel
  - .82 dull brushed

## Function

The gate is automatically held open by pushing it against the catch hook. Push lightly the tripping end of the catch hook to release the gate.

## Mounting

The gate holder should be fastened on the wall at the maximum possible distance from the hinged edge of the gate using 3 plugs and screws. The catch angle should be fitted to the gate in the appropriate position with 3 screws. The catch hole of the angle should be below the screw holes. The gate holder can be converted from wall to floor mounting by unscrewing the arbor and shifting the catch hook.

## Order example

Piece	Item No.	Finish
...piece	1311	02

## 1318.. for doors up to 150 kg

For anchor fixing in the floor

Made of flat bar steel, catch angle made of steel

### Standard finish

- a) Steel
- .03 black stove-enamelled
- .07 hot galvanised

### Packing Unit

2 pieces

### Weight per piece

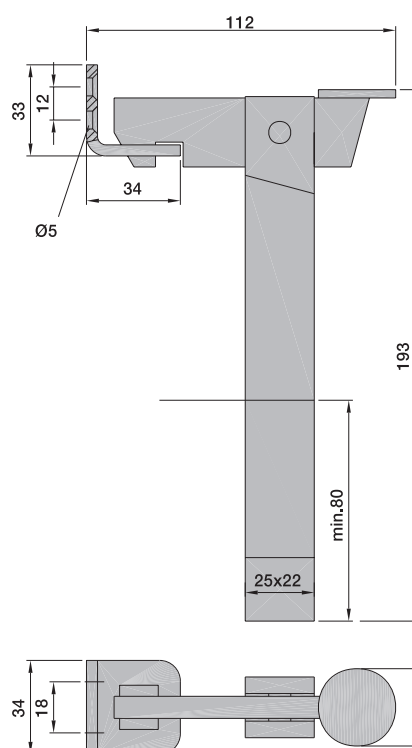
Steel 0.640 kg

### Function

The gate is automatically held open by pushing it against the catch hook. Push lightly the tripping end of the catch hook to release the gate.

### Mounting

The gate holder should be embedded at least 80 mm in the floor at the maximum possible distance from the hinged edge of the gate. The catch angle should be fitted to the gate using 3 screws in the appropriate position. The screw holes are above the catch hole. When opening the gate the catch angle then simultaneously acts as stopper.



1

## 1319.. for gates up to 150 kg

For anchor fixing in the wall

Made of flat bar steel, catch angle made of steel

### Standard finish

- a) Steel
- .03 black stove-enamelled
- .07 hot galvanised

### Packing Unit

2 pieces

### Weight per piece

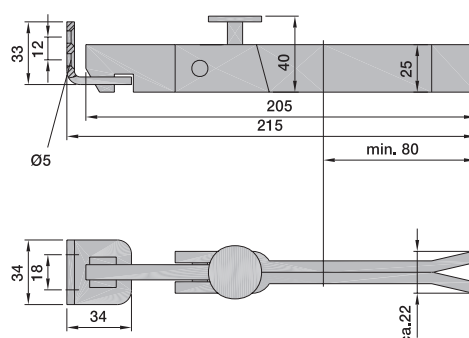
Steel 0.580 kg

### Function

The gate is automatically held open by pushing it against the catch hook. Push lightly the tripping end of the catch hook to release the gate.

### Mounting

The gate holder should be embedded at least 80 mm in the wall at the maximum possible distance from the hinged edge of the gate. The catch angle should be fitted to the gate using 2 screws in the appropriate position. The screw holes are above the catch hole. When opening the gate the catch angle then simultaneously acts as stopper.



### Order example

Piece	Item No.	Finish
...piece	1318	03



# Gate holders

1



**1315..** for gates up to 300 kg

For anchor fixing in the floor

Made of flat bar steel, catch angle made of steel

## Standard finish

- a) Steel
- .03 black stove-enamelled
- .07 hot galvanised

## Packing Unit

1 piece

## Weight per piece

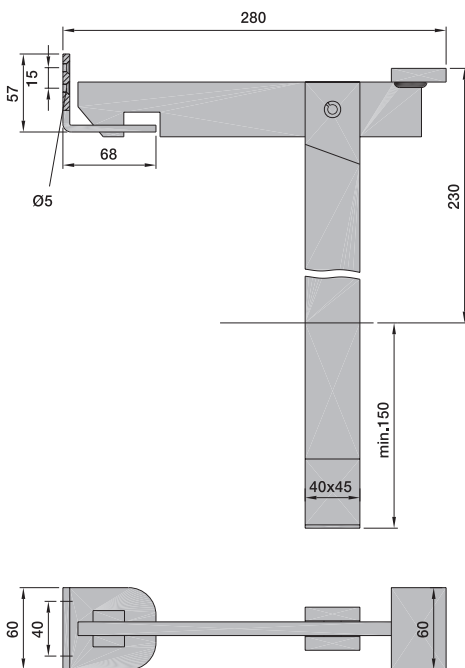
Steel 3.600 kg

## Function

The gate is automatically held open by pushing it against the catch hook. Push lightly the tripping end of the catch hook to release the gate.

## Mounting

The gate holder should be embedded at least 150 mm in the floor at the maximum possible distance from the hinged edge of the gate. The catch angle should be fitted to the gate using 2 screws in the appropriate position. The screw holes are above the catch hole. When opening the gate the catch angle then simultaneously acts as stopper.



## Order example

Piece	Item No.	Finish
...piece	1315	03

## 1317.. for gates up to 150 kg

For anchor fixing in the floor  
One-sided angular  
(Drawing shows catch for right-hand gate)

Made of flat bar steel, catch angle made of steel,  
Buffer of rubber, white

### Standard finish

- a) Steel
  - .03 black stove-enamelled
  - .07 hot galvanised

### Packing Unit

1 piece

### Weight per piece

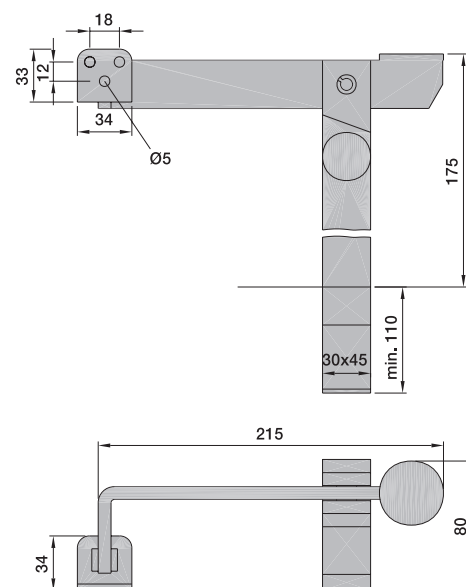
Steel 1.690 kg

### Function

The gate is automatically held open by pushing it against the catch hook. Push lightly the tripping end of the catch hook to release the gate.

### Mounting

The gate holder should be embedded at least 110 mm in the floor at the maximum possible distance from the hinged edge of the gate. The catch angle should be fitted to the gate using 3 screws in the appropriate position. The screw holes are above the catch hole. When opening the gate the catch angle then simultaneously acts as stopper.



### Order example

Piece	Item No.	Finish
...piece	1317	03