

## The supports with the most.

You will find KWS supports under handrails in staircases and corridors, in private houses and public buildings. But they are also located under partitions in WC's and changing cubicles, in other words areas subject to frequent cleaning. Owing to their corrosion resistance properties, KWS stainless steel supports are highly recommended for external areas and damp rooms. They are also available in brass, aluminium and steel of course. KWS supports are very easy to install, strong and yet discreet. Please note the technical information on the following pages.



4

Handrail supports | 166

Partition supports | 194

# Handrail supports

## Applications and operating methods of handrail supports

Three basic types of handrail supports are available:

- for surface-mounted handrails
- for pre-screwed handrails
- for balustrade handrails

The most common ones are surface-mounted or pre-screwed wall handrails in corridors and staircases. In the case of oblique handrails the following models include an additional angle-adjustment function (particularly important when they are screwed on at three points, thereby preventing distortion of the whole support):

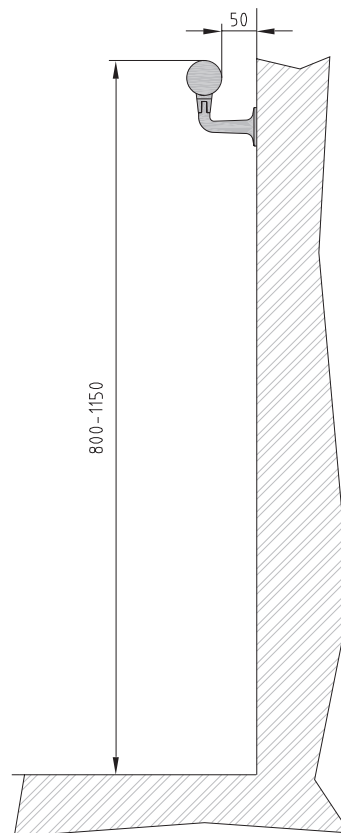
**4511 to 4518**  
**4530 to 4541**  
**4578 / 4579**  
**4678 to 4681**

KWS is also happy to supply complete handrails made from 25 - 50 mm stainless steel, 40 mm brass or 40 mm beech wood. At this point, we would like to mention our tube system in product group 7, which can be used to construct complete, very strong handrail installations.

### ***Please note when installing handrail supports:***

*The distance between two supports must not exceed 800 to 1000 mm depending on the construction of the wall and the load. If not provided by us, strong mounting materials should be used that are appropriate for local conditions.*

*There must be a clearance of 50 mm between the handrails and the wall and the distance from the floor should be between 800 and 1150 mm.*



## Applications and operating methods of partition supports

### Different types of partition supports:

Our range of partition supports is classified according to height, design and type of mounting:

- flat mounting
- U- shaped mounting or
- angle mounting

Prior to installation the clearance between the ground and the partition must be used as an additional selection criterion. However, the height can be adjusted afterwards if the following supports are used (in 25 mm tolerances):

**4231 - 4233**

**4241 - 4243**

**4251 - 4253**

**4101 - 4103**

**4290**

### ***Please note when installing partition supports:***

*Installation problems mainly arise when several supports have to be inserted in a row. Some models are therefore fitted with an centralising disc so that the supports can be aligned correctly even after they have been installed. (compare item nos: 4201ff., 4211ff., 4221ff., 4231ff., 4241ff., 4251ff.)*

## Overview



Page 166



Page 166



Page 167



Page 167



Page 168



Page 168



Page 169



Page 169



Page 170



Page 170



Page 171



Page 171



Page 172



Page 172



Page 173



Page 173



Page 174



Page 174



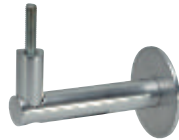
Page 175



Page 175



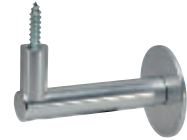
Page 176



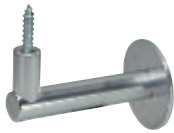
Page 177



Page 177



Page 178



Page 178



Page 179



Page 179



Page 180



Page 180



Page 181



Page 181



Page 182



Page 182



Page 183



Page 183



Page 184



Page 184



Page 185



Page 185



Page 186

# Overview



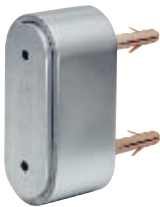
Page 187



Page 188



Page 189



Page 190



Page 191



Page 191



Page 192



Page 192



Page 193



Page 194



Page 195



Page 195



Page 196



Page 197



Page 197



Page 198



Page 198



Page 199



Page 199



Page 200



Page 200



Page 201



Page 201



Page 202



Page 202



Page 203



Page 203



Page 204



Page 204



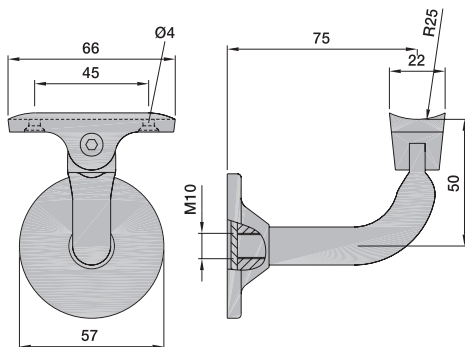
Page 205



Page 205



# Handrail supports



**4511..** for 75 mm clearance

With concave rest R = 25 mm  
For building in by hanger bolt

Made of steel, rest of aluminium

## Standard finish

- a) Steel / Aluminium  
.02 silver stove-enamelled  
.03 black stove-enamelled  
.70 plastic coated

## Packing Unit

6 pieces

## Weight per piece

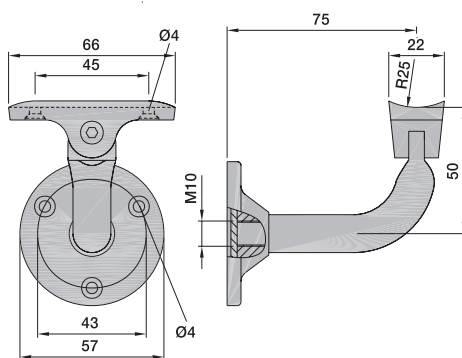
Steel / Aluminium 0.210 kg

## Mounting

The distance between the supports should not exceed 800 - 1000 mm depending on the construction of the wall and the load.

Also available with rest R = 20 mm.

4



**4512..** for 75 mm clearance

With concave rest R = 25 mm, for face fixing

Made of steel, rest of aluminium

Accessory: hanger bolt

## Standard finish

- a) Steel / Aluminium  
.02 silver stove-enamelled  
.03 black stove-enamelled  
.70 plastic coated

## Packing Unit

6 pieces

## Weight per piece

Steel / Aluminium 0.210 kg

## Mounting

The distance between the supports should not exceed 800 - 1000 mm depending on the construction of the wall and the load.

Also available with rest R = 20 mm.

## Order example

Piece	Item No.	Finish
...piece	4511	02

## 4513.. for 75 mm clearance

With flat rest, for building in by hanger bolt

Made of steel, rest of aluminium

### Standard finish

- a) Steel / Aluminium
  - .02 silver stove-enamelled
  - .03 black stove-enamelled
  - .70 plastic coated

### Packing Unit

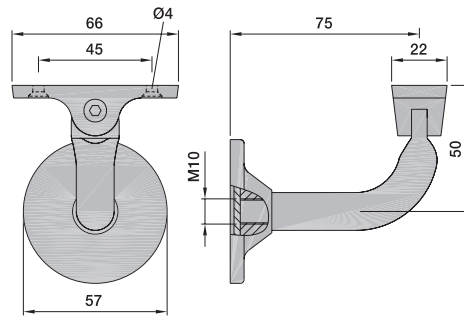
6 pieces

### Weight per piece

Steel / Aluminium 0.220 kg

### Mounting

The distance between the supports should not exceed 800 - 1000 mm depending on the construction of the wall and the load.



## 4514.. for 75 mm clearance

With flat rest, for face fixing

Made of steel, rest of aluminium

Accessory: hanger bolt

### Standard finish

- a) Steel / Aluminium
  - .02 silver stove-enamelled
  - .03 black stove-enamelled
  - .70 plastic coated

### Packing Unit

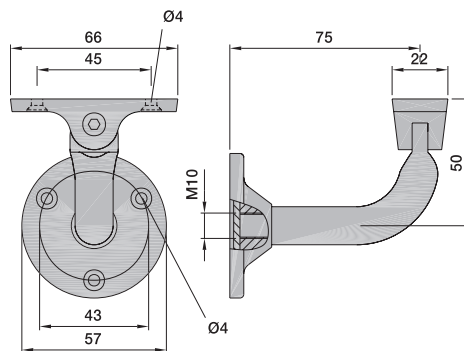
6 pieces

### Weight per piece

Steel / Aluminium 0.220 kg

### Mounting

The distance between the supports should not exceed 800 - 1000 mm depending on the construction of the wall and the load.



### Order example

Piece	Item No.	Finish
...piece	4513	02

# Handrail supports

**4515..** for 75 mm clearance

With concave rest R = 25 mm

For building in by hanger bolt

Made of aluminium or brass

## Standard finish

- a) Aluminium, E5 treated
  - .31 KWS 1 silver anodised
  - .32 KWS 2 nickel silver anodised
  - .33 KWS 3 brass-coloured anodised
  - .37 KWS 5 dark brown anodised
- b) Brass
  - .62 dull brushed and colourless coated
  - .63 nickelized
  - .66 polished and colourless coated
- c) Aluminium
  - .70 plastic coated

**Packing Unit** 6 pieces

## Weight per piece

Aluminium 0.140 kg

Brass 0.330 kg

## Mounting

The distance between the supports should not exceed 800 - 1000 mm depending on the construction of the wall and the load.

Also available with rest R = 20 mm.

**4516..** for 75 mm clearance

With concave rest R = 25 mm

For face fixing

Made of aluminium or brass

Accessory: hanger bolt

## Standard finish

- a) Aluminium, E5 treated
  - .31 KWS 1 silver anodised
  - .32 KWS 2 nickel silver anodised
  - .33 KWS 3 brass-coloured anodised
  - .37 KWS 5 dark brown anodised
- b) Brass
  - .62 dull brushed and colourless coated
  - .63 nickelized
  - .66 polished and colourless coated
- c) Aluminium
  - .70 plastic coated

**Packing Unit** 6 pieces

## Weight per piece

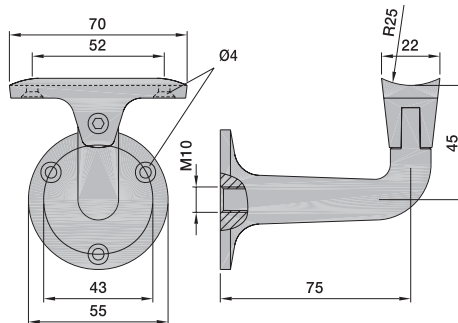
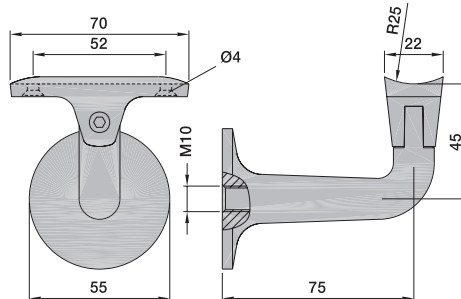
Aluminium 0.140 kg

Brass 0.330 kg

## Mounting

The distance between the supports should not exceed 800 - 1000 mm depending on the construction of the wall and the load.

Also available with rest R = 20 mm.



## Order example

Piece	Item No.	Finish
...piece	4515	31

## 4517.. for 75 mm clearance

With flat rest  
For building in by hanger bolt  
Made of aluminium or brass

### Standard finish

- a) Aluminium, E5 treated
  - .31 KWS 1 silver anodised
  - .32 KWS 2 nickel silver anodised
  - .33 KWS 3 brass-coloured anodised
  - .37 KWS 5 dark brown anodised
- b) Brass
  - .62 dull brushed and colourless coated
  - .63 nickelized
  - .66 polished and colourless coated
- c) Aluminium
  - .70 plastic coated

### Packing Unit

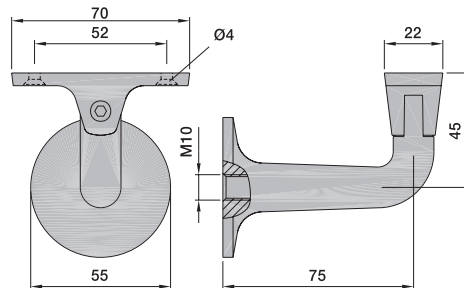
6 pieces

### Weight per piece

Aluminium 0.140 kg  
Brass 0.330 kg

### Mounting

The distance between the supports should not exceed 800 - 1000 mm depending on the construction of the wall and the load.



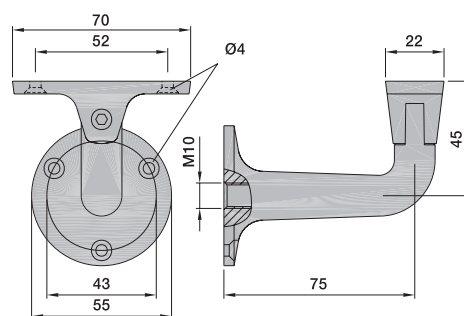
## 4518.. for 75 mm clearance

With flat rest  
For face fixing  
Made of aluminium or brass

Accessory: hanger bolt

### Standard finish

- a) Aluminium, E5 treated
  - .31 KWS 1 silver anodised
  - .32 KWS 2 nickel silver anodised
  - .33 KWS 3 brass-coloured anodised
  - .37 KWS 5 dark brown anodised
- b) Brass
  - .62 dull brushed and colourless coated
  - .63 nickelized
  - .66 polished and colourless coated
- c) Aluminium
  - .70 plastic coated



### Packing Unit

6 pieces

### Weight per piece

Aluminium 0.140 kg  
Brass 0.330 kg

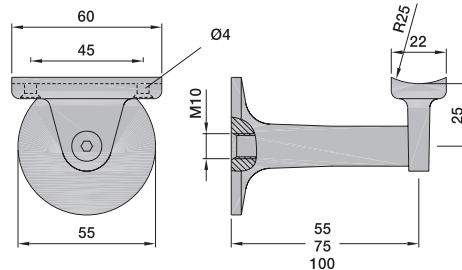
### Mounting

The distance between the supports should not exceed 800 - 1000 mm depending on the construction of the wall and the load.

### Order example

Piece	Item No.	Finish
...piece	4517	31

# Handrail supports



4530.. for 55 mm clearance  
4531.. for 75 mm clearance  
4532.. for 100 mm clearance

With concave rest R = 25 mm  
For building in by hanger bolt  
Made of aluminium

## Standard finish

- a) Aluminium, E5 treated
  - .31 KWS 1 silver anodised
  - .32 KWS 2 nickel silver anodised
  - .33 KWS 3 brass-coloured anodised
  - .37 KWS 5 dark brown anodised
- b) Aluminium
  - .70 plastic coated

## Packing Unit

6 pieces

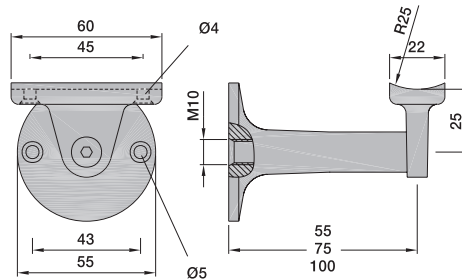
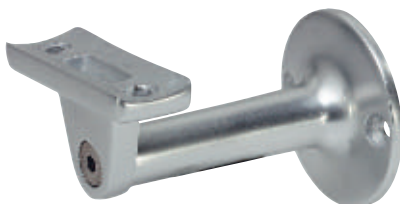
## Weight per piece (4530..)

Aluminium 0.110 kg

## Mounting

The distance between the supports should not exceed 800 - 1000 mm depending on the construction of the wall and the load.

4



4533.. for 55 mm clearance  
4534.. for 75 mm clearance  
4535.. for 100 mm clearance

With concave rest R = 25 mm  
For face fixing  
Made of aluminium

Accessory: hanger bolt

## Standard finish

- a) Aluminium, E5 treated
  - .31 KWS 1 silver anodised
  - .32 KWS 2 nickel silver anodised
  - .33 KWS 3 brass-coloured anodised
  - .37 KWS 5 dark brown anodised
- b) Aluminium
  - .70 plastic coated

## Packing Unit

6 pieces

## Weight per piece (4533..)

Aluminium 0.110 kg

## Mounting

The distance between the supports should not exceed 800 - 1000 mm depending on the construction of the wall and the load.

## Order example

Piece	Item No.	Finish
...piece	4530	31

4536.. for 55 mm clearance

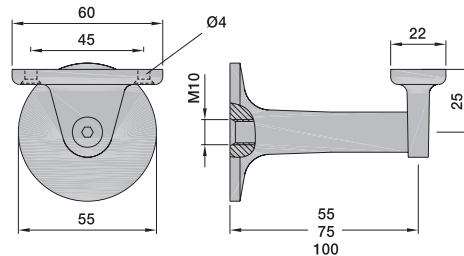
4537.. for 75 mm clearance

4538.. for 100 mm clearance

With flat rest  
For building in by hanger bolt  
Made of aluminium

## Standard finish

- a) Aluminium, E5 treated
  - .31 KWS 1 silver anodised
  - .32 KWS 2 nickel silver anodised
  - .33 KWS 3 brass-coloured anodised
  - .37 KWS 5 dark brown anodised
- b) Aluminium
  - .70 plastic coated



## Packing Unit

6 pieces

## Weight per piece (4536..)

Aluminium 0.110 kg

## Mounting

The distance between the supports should not exceed 800 - 1000 mm depending on the construction of the wall and the load.

4539.. for 55 mm clearance

4540.. for 75 mm clearance

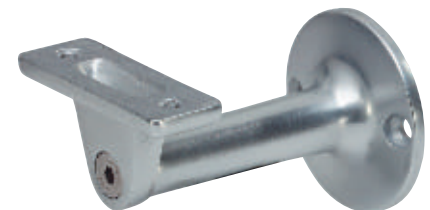
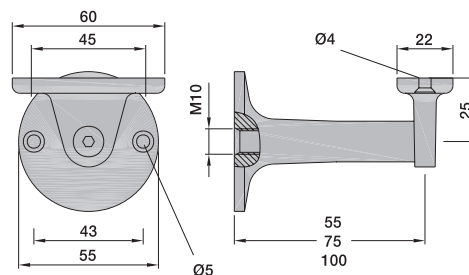
4541.. for 100 mm clearance

With flat rest  
For face fixing  
Made of aluminium

Accessory: hanger bolt

## Standard finish

- a) Aluminium, E5 treated
  - .31 KWS 1 silver anodised
  - .32 KWS 2 nickel silver anodised
  - .33 KWS 3 brass-coloured anodised
  - .37 KWS 5 dark brown anodised
- b) Aluminium
  - .70 plastic coated



## Packing Unit

6 pieces

## Weight per piece (4539..)

Aluminium 0.110 kg

## Mounting

The distance between the supports should not exceed 800 - 1000 mm depending on the construction of the wall and the load.

## Order example

Piece	Item No.	Finish
...piece	4536	31

# Handrail supports

## 4522..

With concave rest R = 25 mm

For building in

Made of steel or stainless steel

### Standard finish

- a) Steel
  - .02 silver stove-enamelled
  - .03 black stove-enamelled
  - .06 electrogalvanised
  - .70 plastic coated
- b) Stainless steel
  - .82 dull brushed
  - .83 polished

### Packing Unit

6 pieces

### Weight per piece

Steel 0.170 kg  
Stainless steel 0.170 kg

### Mounting

The distance between the supports should not exceed 800 - 1000 mm depending on the construction of the wall and the load.

Also available with rest R = 20 mm.

## 4523..

With flat rest

For building in

Made of steel or stainless steel

### Standard finish

- a) Steel
  - .02 silver stove-enamelled
  - .03 black stove-enamelled
  - .06 electrogalvanised
  - .70 plastic coated
- b) Stainless steel
  - .82 dull brushed
  - .83 polished

### Packing Unit

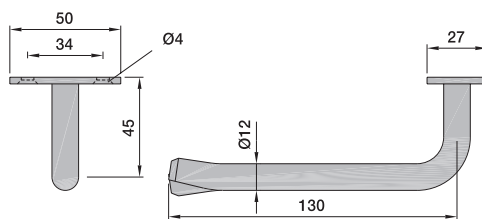
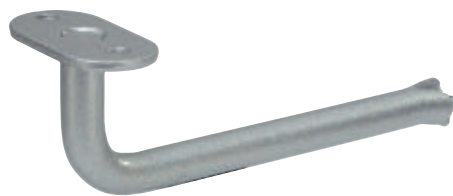
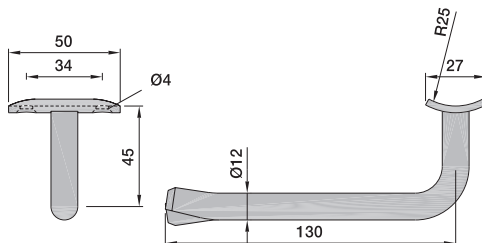
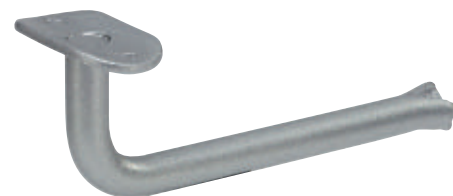
6 pieces

### Weight per piece

Steel 0.170 kg  
Stainless steel 0.170 kg

### Mounting

The distance between the supports should not exceed 800 - 1000 mm depending on the construction of the wall and the load.



### Order example

Piece	Item No.	Finish
...piece	4522	02

## 4524.. for 75 mm clearance

With concave rest R = 25 mm  
For face fixing

Made of steel, brass or stainless steel

### Standard finish

- a) Steel
  - .02 silver stove-enamelled
  - .03 black stove-enamelled
  - .06 electrogalvanised
  - .70 plastic coated
- b) Brass
  - .62 dull brushed and colourless coated
  - .66 polished and colourless coated
- c) Stainless steel
  - .82 dull brushed
  - .83 polished



### Packing Unit

6 pieces

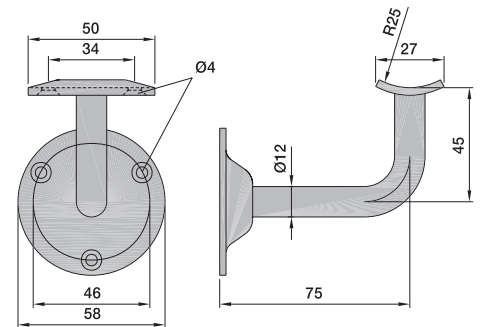
### Weight per piece

Steel	0.160 kg
Brass	0.180 kg
Stainless steel	0.160 kg

### Mounting

The distance between the supports should not exceed 800 - 1000 mm depending on the construction of the wall and the load.

Also available with rest R = 20 mm.



4

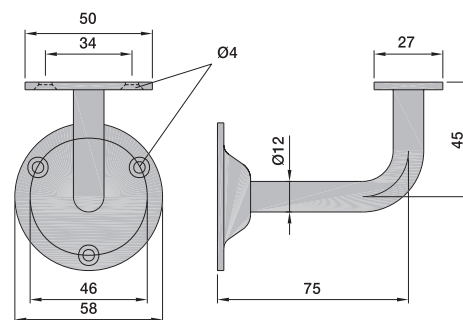
## 4525.. for 75 mm clearance

With flat rest  
For face fixing

Made of steel, brass or stainless steel

### Standard finish

- a) Steel
  - .02 silver stove-enamelled
  - .03 black stove-enamelled
  - .06 electrogalvanised
  - .70 plastic coated
- b) Brass
  - .62 dull brushed and colourless coated
  - .66 polished and colourless coated
- c) Stainless steel
  - .82 dull brushed
  - .83 polished



### Packing Unit

6 pieces

### Weight per piece

Steel	0.160 kg
Brass	0.180 kg
Stainless steel	0.160 kg

### Mounting

The distance between the supports should not exceed 800 - 1000 mm depending on the construction of the wall and the load.

### Order example

Piece	Item No.	Finish
...piece	4524	02



# Handrail supports

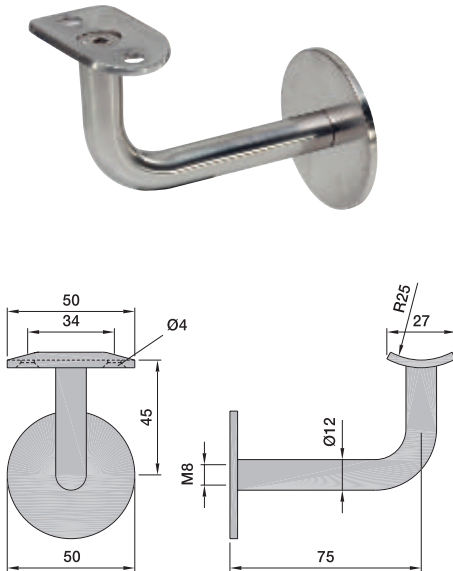
**4570..** for 75 mm clearance

With concave rest R = 25 mm  
For building in

Made of steel, brass or stainless steel

## Standard finish

- a) Steel
  - .02 silver stove-enamelled
  - .03 black stove-enamelled
  - .06 electrogalvanised
  - .70 plastic coated
- b) Brass
  - .62 dull brushed and colourless coated
  - .66 polished and colourless coated
- c) Stainless steel
  - .82 dull brushed
  - .83 polished



## Packing Unit

6 pieces

## Weight per piece

Steel	0.170 kg
Brass	0.190 kg
Stainless Steel	0.170 kg

## Mounting

The distance between the supports should not exceed 800 - 1000 mm depending on the construction of the wall and the load.

Also available with rest R = 20 mm.

4

**4571..** for 75 mm clearance

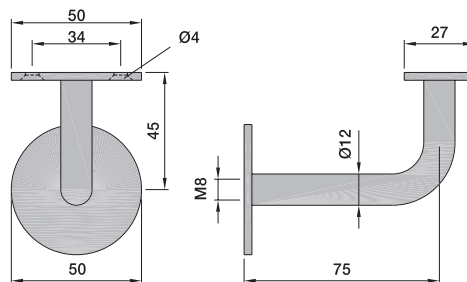
With flat rest

For building in

Made of steel or stainless steel

## Standard finish

- a) Steel
  - .02 silver stove-enamelled
  - .03 black stove-enamelled
  - .06 electrogalvanised
  - .70 plastic coated
- b) Brass
  - .62 dull brushed and colourless coated
  - .66 polished and colourless coated
- c) Stainless steel
  - .82 dull brushed
  - .83 polished



## Packing Unit

6 pieces

## Weight per piece

Steel	0.170 kg
Brass	0.190 kg
Stainless steel	0.170 kg

## Mounting

The distance between the supports should not exceed 800 - 1000 mm depending on the construction of the wall and the load.

## Order example

Piece	Item No.	Finish
...piece	4570	02

## 4574.. for 75 mm clearance

With concave rest  $R = 25$  mm  
For face fixing, wall rose  $\varnothing 80$  mm  
Made of steel or stainless steel

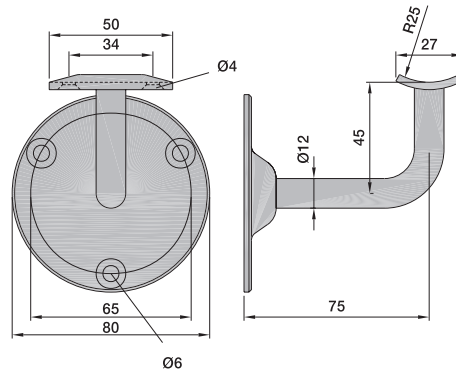
### Standard finish

- a) Steel
  - .02 silver stove-enamelled
  - .03 black stove-enamelled
  - .06 electrogalvanised
  - .70 plastic coated

### b) Stainless steel



- .82 dull brushed
- .83 polished



### Packing Unit

6 pieces

### Weight per piece

Steel 0.220 kg  
Stainless steel 0.220 kg

### Mounting

The distance between the supports should not exceed 800 - 1000 mm depending on the construction of the wall and the load.  
Also available with rest  $R = 20$  mm.

## 4575.. for 75 mm clearance

With flat rest  
For face fixing, wall rose  $\varnothing 80$  mm  
Made of steel or stainless steel

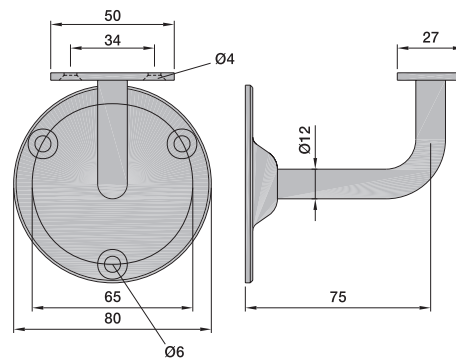
### Standard finish

- a) Steel
  - .02 silver stove-enamelled
  - .03 black stove-enamelled
  - .06 electrogalvanised
  - .70 plastic coated

### b) Stainless steel



- .82 dull brushed
- .83 polished



### Packing Unit

6 pieces

### Weight per piece

Steel 0.220 kg  
Stainless steel 0.220 kg

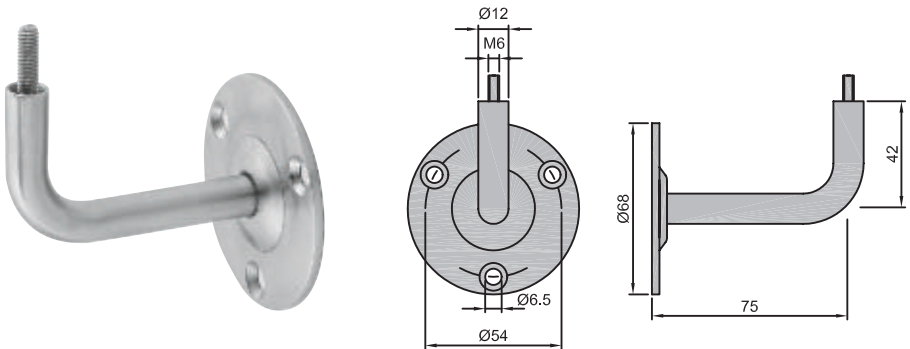
### Mounting

The distance between the supports should not exceed 800 - 1000 mm depending on the construction of the wall and the load.

### Order example

Piece	Item No.	Finish
...piece	4574	06

# Handrail supports



- 4601.. for 75 mm clearance, with M6 thread end
- 4602.. for 75 mm clearance, with concave rest
- 4603.. for 75 mm clearance, with flat rest
- 4611.. like 4601 with cover 4600
- 4612.. like 4602 with cover 4600
- 4613.. like 4603 with cover 4600

Made of stainless steel

Standard finish

- a) Stainless steel



- .82 dull brushed
- .83 polished

Packing Unit

6 pieces

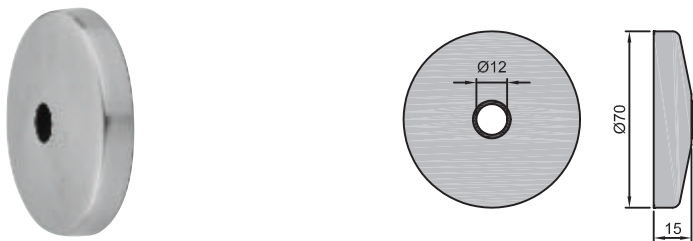
Weight per piece

Stainless steel 0.150 kg

Montage

The distance between the supports should be 800 - 1000 mm depending on the load and the structure of the wall.

4



- 4600.. Cover for 4601 – 4603

Standard finish

- a) Stainless steel



- .82 dull brushed
- .83 polished

Weight per piece

Stainless steel 0.050 kg

Order example

Piece	Item No.	Finish
...piece	4601	82

## 4545.. for 75 mm clearance

For handrail R = 25 mm

For building in by hanger bolt

Made of steel, aluminium, brass or stainless steel

Handrail fixing by metric screw

### Standard finish

#### a) Steel

- .02 silver stove-enamelled
- .03 black stove-enamelled
- .06 electrogalvanised
- .70 plastic coated

#### b) Aluminium, E4 treated

- .22 KWS 1 silver anodised
- .23 KWS 2 nickel-silver anodised
- .24 KWS 3 brass-coloured anodised
- .28 KWS 5 dark brown anodised

#### c) Aluminium, E5 treated

- .31 KWS 1 silver anodised
- .32 KWS 2 nickel silver anodised
- .33 KWS 3 brass-coloured anodised
- .37 KWS 5 dark brown anodised

#### d) Aluminium, E6 treated

- .41 KWS 1 silver anodised
- .42 KWS 2 nickel-silver anodised
- .43 KWS 3 brass-coloured anodised
- .47 KWS 5 dark brown coloured

#### e) Brass

- .62 dull brushed and colourless coated
- .66 polished and colourless coated

#### f) Stainless steel



- .82 dull brushed
- .83 polished

### Packing Unit

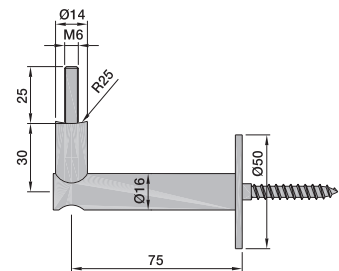
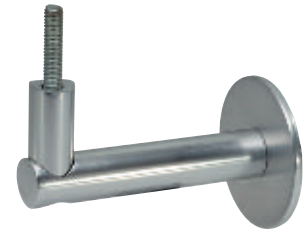
6 pieces

### Weight per piece

Steel	0.210 kg
Aluminium	0.075 kg
Brass	0.230 kg
Stainless steel	0.210 kg

### Mounting

The distance between the supports should not exceed 800 - 1000 mm depending on the construction of the wall and the load.



## 4546.. for 75 mm clearance

For flat handrail

For building in by hanger bolt

Made of steel, aluminium, brass or stainless steel

Handrail fixing by metric screw

### Standard finish

#### a) Steel

- .02 silver stove-enamelled
- .03 black stove-enamelled
- .06 electrogalvanised
- .70 plastic coated

#### b) Aluminium, E4 treated

- .22 KWS 1 silver anodised
- .23 KWS 2 nickel-silver anodised
- .24 KWS 3 brass-coloured anodised
- .28 KWS 5 dark brown anodised

#### c) Aluminium, E5 treated

- .31 KWS 1 silver anodised
- .32 KWS 2 nickel silver anodised
- .33 KWS 3 brass-coloured anodised
- .37 KWS 5 dark brown anodised

#### d) Aluminium, E6 treated

- .41 KWS 1 silver anodised
- .42 KWS 2 nickel-silver anodised
- .43 KWS 3 brass-coloured anodised
- .47 KWS 5 dark brown coloured

#### e) Brass

- .62 dull brushed and colourless coated
- .66 polished and colourless coated

#### f) Stainless steel



- .82 dull brushed
- .83 polished

### Packing Unit

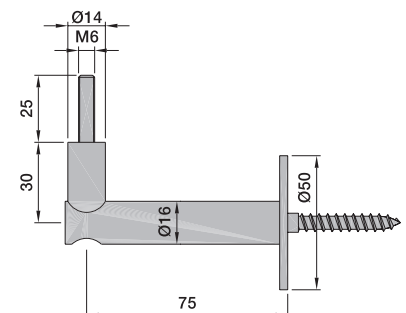
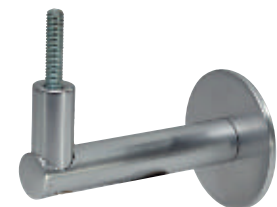
6 pieces

### Weight per piece

Steel	0.210 kg
Aluminium	0.075 kg
Brass	0.230 kg
Stainless steel	0.210 kg

### Mounting

The distance between the supports should not exceed 800 - 1000 mm depending on the construction of the wall and the load.



### Order example

Piece	Item No.	Finish
...piece	4545	02

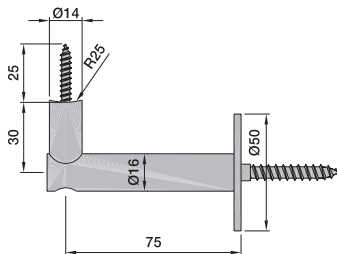
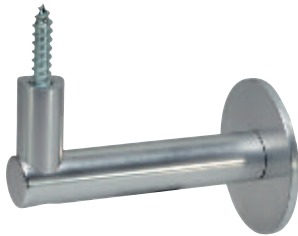
# Handrail supports

4547.. for 75 mm clearance

For handrail R = 25 mm  
For building in by hanger bolt

Made of steel, aluminium, brass or stainless steel

Handrail fixing by a 6 mm wood screw



## Standard finish

- a) Steel
  - .02 silver stove-enamelled
  - .03 black stove-enamelled
  - .06 electrogalvanised
  - .70 plastic coated
- b) Aluminium, E4 treated
  - .22 KWS 1 silver anodised
  - .23 KWS 2 nickel-silver anodised
  - .24 KWS 3 brass-coloured anodised
  - .28 KWS 5 dark brown anodised
- c) Aluminium, E5 treated
  - .31 KWS 1 silver anodised
  - .32 KWS 2 nickel silver anodised
  - .33 KWS 3 brass-coloured anodised
  - .37 KWS 5 dark brown anodised
- d) Aluminium, E6 treated
  - .41 KWS 1 silver anodised
  - .42 KWS 2 nickel-silver anodised
  - .43 KWS 3 brass-coloured anodised
  - .47 KWS 5 dark brown coloured

## e) Brass

- .62 dull brushed and colourless coated
- .66 polished and colourless coated

## f) Stainless steel



- .82 dull brushed
- .83 polished

## Packing Unit

6 pieces

## Weight per piece

Steel	0.210 kg
Aluminium	0.075 kg
Brass	0.230 kg
Stainless steel	0.210 kg

## Mounting

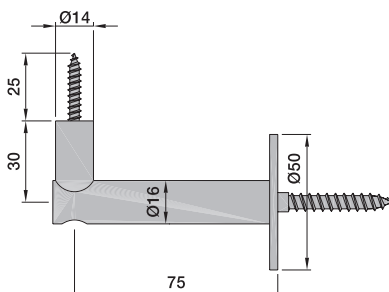
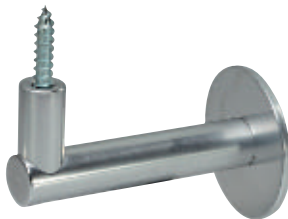
The distance between the supports should not exceed 800 - 1000 mm depending on the construction of the wall and the load.

4548.. for 75 mm clearance

For flat handrail  
For building in by hanger bolt

Made of steel, aluminium, brass or stainless steel

Handrail fixing by a 6 mm wood screw



## Standard finish

- a) Steel
  - .02 silver stove-enamelled
  - .03 black stove-enamelled
  - .06 electrogalvanised
  - .70 plastic coated
- b) Aluminium, E4 treated
  - .22 KWS 1 silver anodised
  - .23 KWS 2 nickel-silver anodised
  - .24 KWS 3 brass-coloured anodised
  - .28 KWS 5 dark brown anodised
- c) Aluminium, E5 treated
  - .31 KWS 1 silver anodised
  - .32 KWS 2 nickel silver anodised
  - .33 KWS 3 brass-coloured anodised
  - .37 KWS 5 dark brown anodised
- d) Aluminium, E6 treated
  - .41 KWS 1 silver anodised
  - .42 KWS 2 nickel-silver anodised
  - .43 KWS 3 brass-coloured anodised
  - .47 KWS 5 dark brown coloured

## e) Brass

- .62 dull brushed and colourless coated
- .66 polished and colourless coated

## f) Stainless steel



- .82 dull brushed
- .83 polished

## Packing Unit

6 pieces

## Weight per piece

Steel	0.210 kg
Aluminium	0.075 kg
Brass	0.230 kg
Stainless steel	0.210 kg

## Mounting

The distance between the supports should not exceed 800 - 1000 mm depending on the construction of the wall and the load.

## Order example

Piece	Item No.	Finish
...piece	4547	02

## 4578.. for 75 mm clearance

With concave rest R = 25 mm  
For face fixing, (3 screw holes and metric inside thread for hanger bolt) with wall cap

Made of stainless steel

Accessory: hanger bolt

### Standard finish

a) Stainless steel



.82 dull brushed  
.83 polished

### Packing Unit

3 pieces

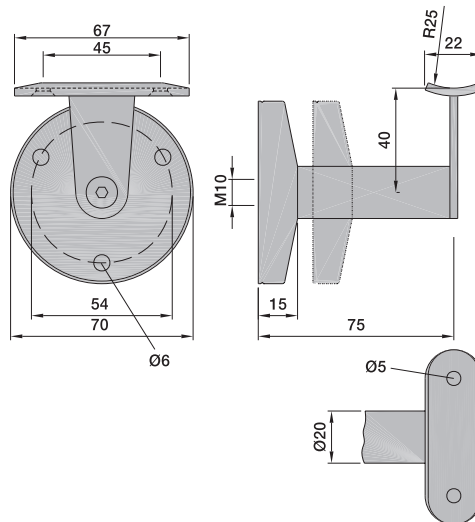
### Weight per piece

Stainless steel 0.350 kg

### Mounting

The distance between the supports should not exceed 800 - 1000 mm depending on the construction of the wall and the load.

Also available with rest R = 20 mm.



## 4579.. for 75 mm clearance

With concave rest R = 25 mm  
For face fixing, (3 screw holes and metric inside thread for hanger bolt) with wall cap

Made of stainless steel

Accessory: hanger bolt

### Standard finish

a) Stainless steel



.82 dull brushed  
.83 polished

### Packing Unit

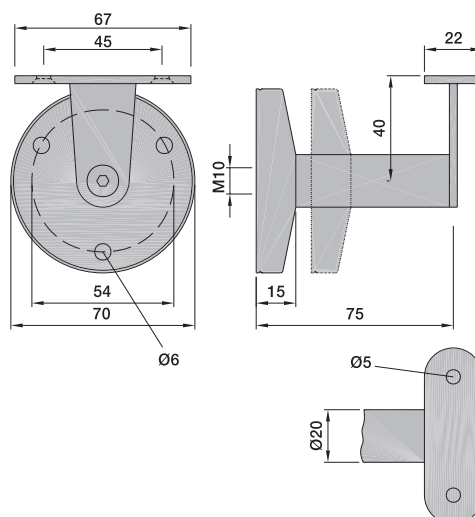
3 pieces

### Weight per piece

Stainless steel 0.350 kg

### Mounting

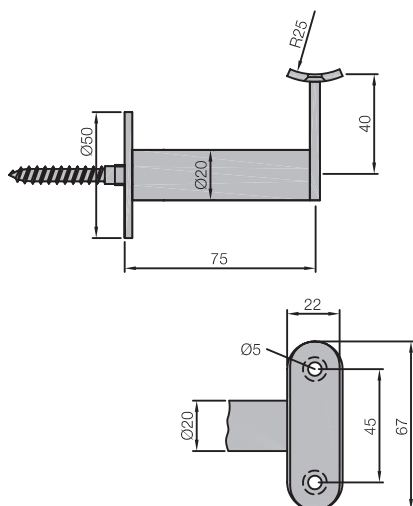
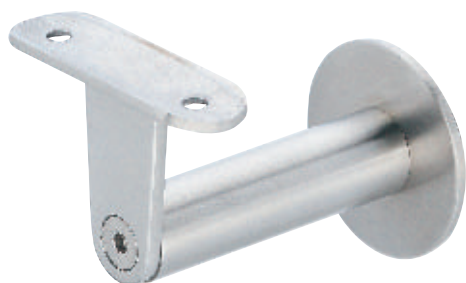
The distance between the supports should not exceed 800 - 1000 mm depending on the construction of the wall and the load.



### Order example

Piece	Item No.	Finish
...piece	4578	82

# Handrail supports



**4678..** for 75 mm clearance

With concave rest and hanger bolt for fixing with plugs

## Standard finish

a) Stainless steel



.82 dull brushed

.83 polished

## Packing Unit

3 pieces

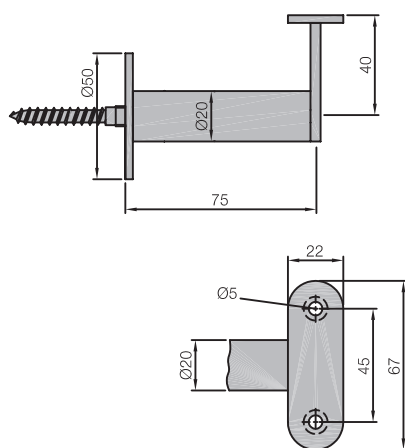
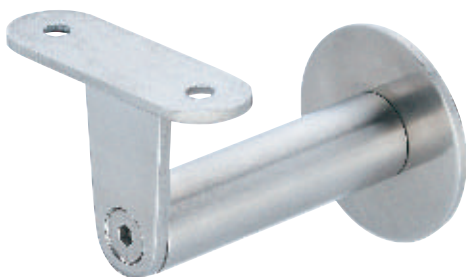
## Weight per piece

Stainless steel 0.250 kg

## Mounting

The distance between the supports should be 800 - 1000 mm depending on the load and the structure of the wall.

4



**4679..** for 75 mm clearance

With flat rest and hanger bolt for fixing with plugs

Made of stainless steel

## Standard finish

a) Stainless steel



.82 dull brushed

.83 polished

## Packing Unit

3 pieces

## Weight per piece

Stainless steel 0.250 kg

## Mounting

The distance between the supports should be 800 - 1000 mm depending on the load and the structure of the wall.

## Order example

Piece	Item No.	Finish
...piece	4578	82

## 4680.. for 70 – 80 mm clearance

With concave rest and hanger bolt for fixing with plugs

Clearance adjustable

Made of stainless steel

### Standard finish

a) Stainless steel



.82 dull brushed

.83 polished

### Packing Unit

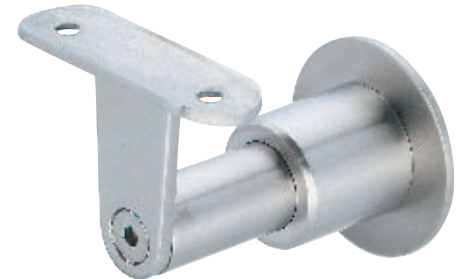
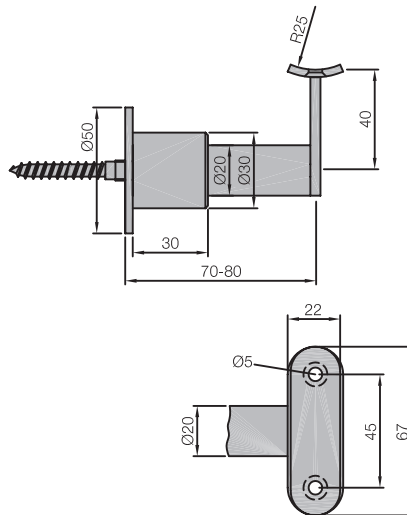
3 pieces

### Weight per piece

Stainless steel 0.350 kg

### Mounting

The distance between the supports should be 800 - 1000 mm depending on the load and the structure of the wall.



## 4681.. for 70 – 80 mm clearance

With flat rest and hanger bolt for fixing with plugs

Clearance adjustable

Made of stainless steel

### Standard finish

a) Stainless steel



.82 dull brushed

.83 polished

### Packing Unit

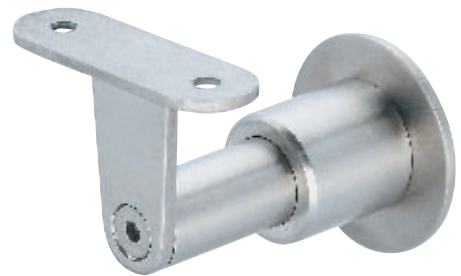
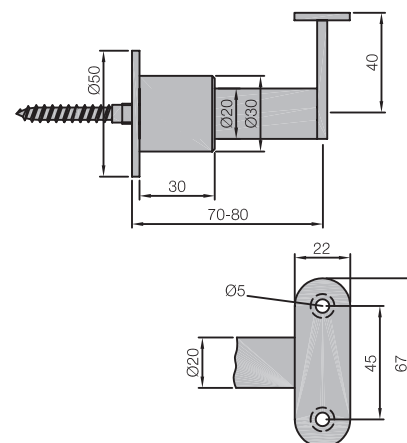
3 pieces

### Weight per piece

Stainless steel 0.350 kg

### Mounting

The distance between the supports should be 800 - 1000 mm depending on the load and the structure of the wall.

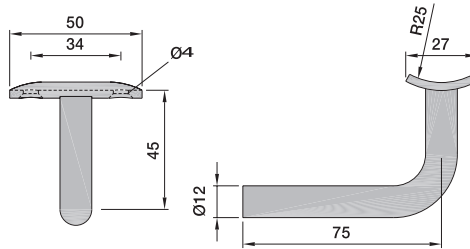


### Order example

Piece	Item No.	Finish
...piece	4680	82



# Handrail supports



**4526..** for 75 mm clearance

With concave rest R = 25 mm  
For welding on

Made of steel

## Standard finish

- a) Steel  
.01 surface untreated

## Packing Unit

6 pieces

## Weight per piece

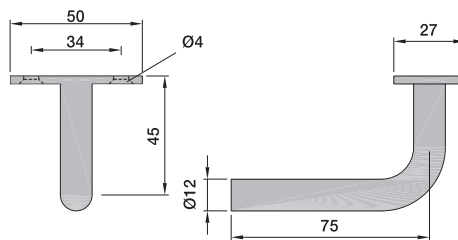
Steel 0.120 kg

## Mounting

The distance between the supports should not exceed 800 - 1000 mm depending on the construction of the wall and the load.

Also available with rest R = 20 mm.

4



**4527..** for 75 mm clearance

With flat rest  
For welding on

Made of steel

## Standard finish

- a) Steel  
.01 surface untreated

## Packing Unit

6 pieces

## Weight per piece

Steel 0.120 kg

## Mounting

The distance between the supports should not exceed 800 - 1000 mm depending on the construction of the wall and the load.

## Order example

Piece	Item No.	Finish
...piece	4526	01

## 4528.. for 75 mm clearance

With concave rest R = 25 mm  
For building in (metric thread M 12)  
Made of steel or stainless steel

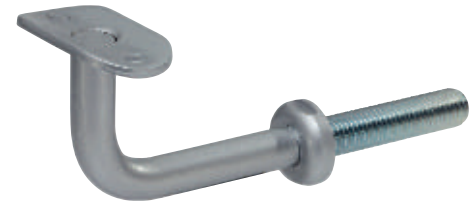
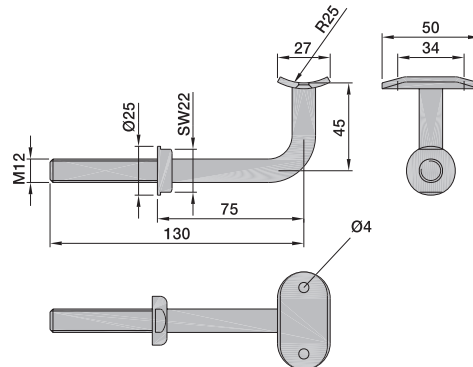
### Standard finish

- a) Steel  
.02 silver stove-enamelled  
.03 black stove-enamelled  
.06 electrogalvanised  
.70 plastic coated

### b) Stainless steel



- .82 dull brushed  
.83 polished



### Packing Unit

6 pieces

### Weight per piece

Steel 0.170 kg  
Stainless steel 0.170 kg

### Mounting

The distance between the supports should not exceed 800 - 1000 mm depending on the construction of the wall and the load.  
Also available with rest R = 20 mm.

## 4529.. for 75 mm clearance

With flat rest R = 25 mm  
For building in (metric thread M 12)  
Made of steel or stainless steel

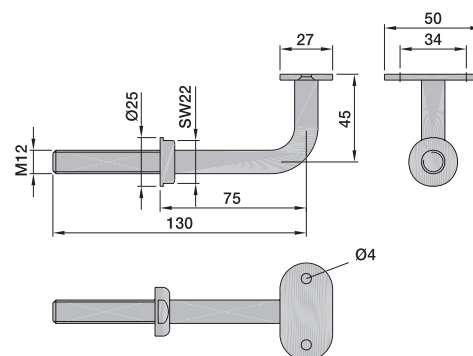
### Standard finish

- a) Steel  
.02 silver stove-enamelled  
.03 black stove-enamelled  
.06 electrogalvanised  
.70 plastic coated

### b) Stainless steel



- .82 dull brushed  
.83 polished



**Packing Unit** 6 pieces

### Weight per piece

Steel 0.170 kg  
Stainless steel 0.170 kg

### Mounting

The distance between the supports should not exceed 800 - 1000 mm depending on the construction of the wall and the load.

### Order example

Piece ...piece	Item No. 4528	Finish 02
-------------------	------------------	--------------

# Handrail supports

4501.. for 55 mm clearance

With flat rest  
For building in by hanger bolt

Made of steel

## Standard finish

- a) Steel
- .02 silver stove-enamelled
  - .03 black stove-enamelled
  - .06 electrogalvanised
  - .70 plastic coated

## Packing Unit

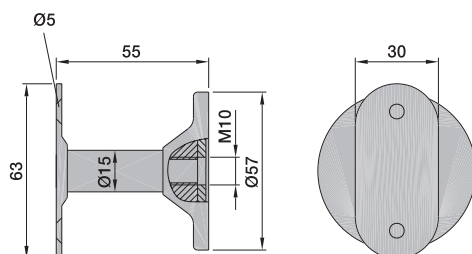
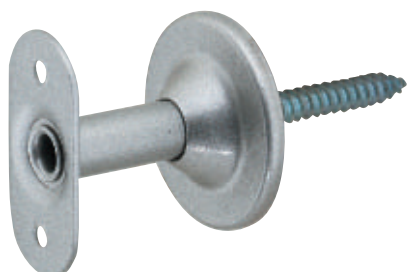
6 pieces

## Weight per piece

Steel 0.170 kg

## Mounting

The distance between the supports should not exceed 800 - 1000 mm depending on the construction of the wall and the load.



4

4502.. for 55 mm clearance

With flat rest  
For face fixing

Made of steel

Accessory: hanger bolt

## Standard finish

- a) Steel
- .02 silver stove-enamelled
  - .03 black stove-enamelled
  - .06 electrogalvanised
  - .70 plastic coated

## Packing Unit

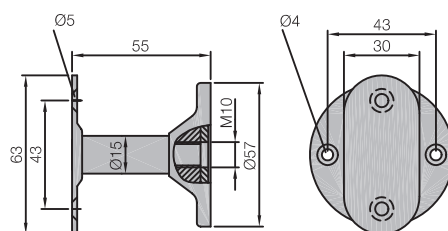
6 pieces

## Weight per piece

Steel 0.170 kg

## Mounting

The distance between the supports should not exceed 800 - 1000 mm depending on the construction of the wall and the load.



## Order example

Piece	Item No.	Finish
...piece	4501	02

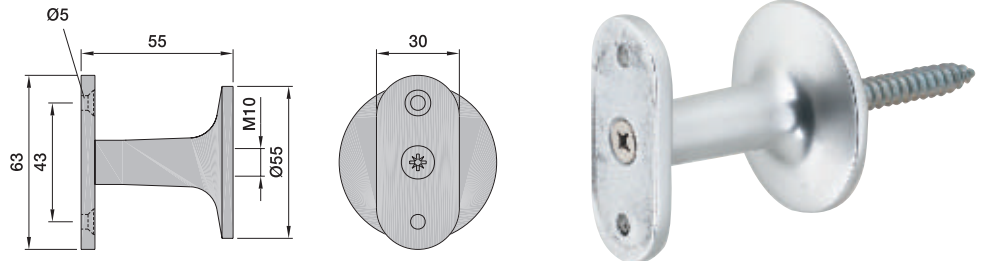
## 4701.. for 55 mm clearance

With flat rest  
For building in by hanger bolt

Made of aluminium

### Standard finish

- a) Aluminium, E5 treated
  - .31 KWS 1 silver anodised
  - .32 KWS 2 nickel silver anodised
  - .33 KWS 3 brass-coloured anodised
  - .37 KWS 5 dark brown anodised
- b) Aluminium
  - .70 plastic coated



### Packing Unit

6 pieces

### Weight per piece

Aluminium 0.110 kg

### Mounting

The distance between the supports should not exceed 800 - 1000 mm depending on the construction of the wall and the load.

4

## 4702.. for 55 mm clearance

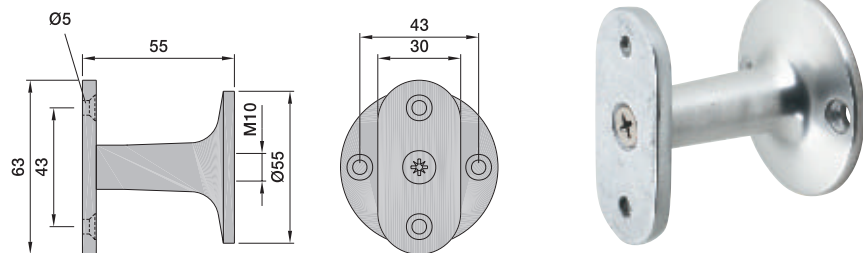
With flat rest  
For face fixing

Made of aluminium

Accessory: hanger bolt

### Standard finish

- a) Aluminium, E5 treated
  - .31 KWS 1 silver anodised
  - .32 KWS 2 nickel silver anodised
  - .33 KWS 3 brass-coloured anodised
  - .37 KWS 5 dark brown anodised
- b) Aluminium
  - .70 plastic coated



### Packing Unit

6 pieces

### Weight per piece

Aluminium 0.110 kg

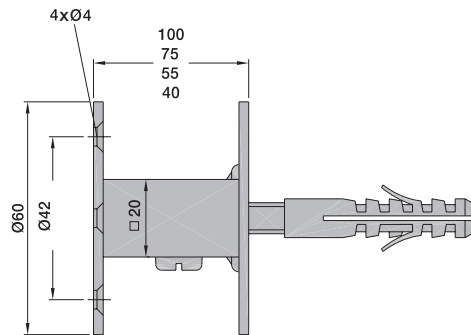
### Mounting

The distance between the supports should not exceed 800 - 1000 mm depending on the construction of the wall and the load.

### Order example

Piece ...piece	Item No. 4701	Finish 31
-------------------	------------------	--------------

# Handrail supports



- 4503.. for 40 mm clearance, with fixings
- 4504.. for 40 mm clearance, without fixings
- 4505.. for 55 mm clearance, with fixings
- 4506.. for 55 mm clearance, without fixings
- 4507.. for 75 mm clearance, with fixings
- 4508.. for 75 mm clearance, without fixings
- 4543.. for 100 mm clearance, with fixings
- 4544.. for 100 mm clearance, without fixings

Two-piece, made of steel

## Standard finish

- a) Steel
  - .02 silver stove-enamelled
  - .03 black stove-enamelled
  - .06 electrogalvanised
  - .70 plastic coated

## Packing Unit

5 pieces

## Weight per piece

Steel 0.200 kg

## Mounting

The drill holes should be marked at the planned positions on the wall where the handrail should go with a distance of 800 - 1000 mm. The holes should be bored and the wall supports should be screwed on the wall. The counter elements should be fastened at the respective positions on the handrail, pressed onto the wall supports and joined by a screw.

## Order example

Piece	Item No.	Finish
...piece	4503	02

4560.. with fixings

4561.. without fixings

Adjustable for 40 - 50 mm clearance

Two-piece, made of steel

## Standard finish

### a) Steel

- .02 silver stove-enamelled
- .03 black stove-enamelled
- .06 electrogalvanised
- .70 plastic coated

## Packing Unit

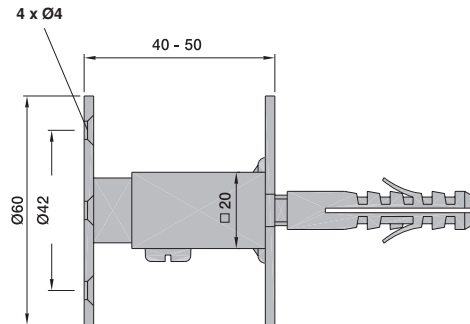
5 pieces

## Weight per piece

Steel 0.190 kg

## Mounting

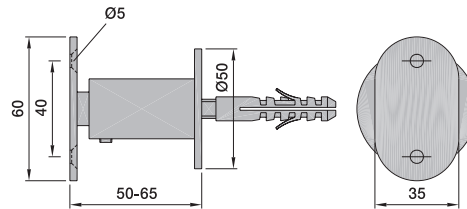
The drill holes should be marked at the planned positions on the wall where the handrail should go with a distance of 800 - 1000 mm. The holes should be bored and the wall supports should be screwed on the wall. The counter elements should be fastened at the respective positions on the handrail, pressed onto the wall supports and joined by a screw.



## Order example

Piece	Item No.	Finish
...piece	4560	02

# Handrail supports



4550.. with fixings

4551.. without fixings

Adjustable for 50 - 65 mm clearance

Two-piece, made of aluminium or stainless steel

## Standard finish

- a) Aluminium, E4 treated
  - .22 KWS 1 silver anodised
  - .23 KWS 2 nickel-silver anodised
  - .24 KWS 3 brass-coloured anodised
  - .28 KWS 5 dark brown anodised
- b) Aluminium, E5 treated
  - .31 KWS 1 silver anodised
  - .32 KWS 2 nickel silver anodised
  - .33 KWS 3 brass-coloured anodised
  - .37 KWS 5 dark brown anodised
- c) Aluminium, E6 treated
  - .41 KWS 1 silver anodised
  - .42 KWS 2 nickel-silver anodised
  - .43 KWS 3 brass-coloured anodised
  - .47 KWS 5 dark brown coloured
- d) Aluminium
  - .70 plastic coated
- e) Stainless steel
  - .82 dull brushed
  - .83 polished

## Packing Unit

5 pieces

## Weight per piece

Aluminium	0.130 kg
Stainless steel	0.300 kg

## Mounting

The handrail holding devices (oval cap with bolt) should be screwed on the handrail with a distance of 800 - 1000 mm, the drill holes should be marked at the respective positions on the wall using a marking aid (bolt point), the holes should be bored, the wall support screwed on, the handrail pressed with the holding devices onto the wall supports, adjusted and joined on the side by an attachment screw.

## Order example

Piece	Item No.	Finish
...piece	4550	22

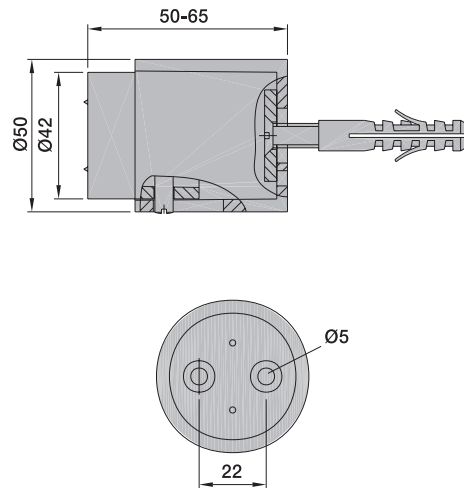
4509.. with fixings  
4510.. without fixings

Adjustable for 50 - 65 mm clearance

Two-piece, made of aluminium

## Standard finish

- a) Aluminium, E4 treated
  - .22 KWS 1 silver anodised
  - .23 KWS 2 nickel-silver anodised
  - .24 KWS 3 brass-coloured anodised
  - .28 KWS 5 dark brown anodised
- b) Aluminium, E5 treated
  - .31 KWS 1 silver anodised
  - .32 KWS 2 nickel silver anodised
  - .33 KWS 3 brass-coloured anodised
  - .37 KWS 5 dark brown anodised
- c) Aluminium
  - .70 plastic coated



## Packing Unit

5 pieces

## Weight per piece

Aluminium 0.210 kg

## Mounting

The drill holes should be marked at the planned positions on the wall where the handrail should go with a distance of 800 - 1000 mm. The holes should be bored and the wall supports should be screwed on the wall. The counter elements should be fastened at the respective positions on the handrail, pressed onto the wall supports and joined by a set screw.

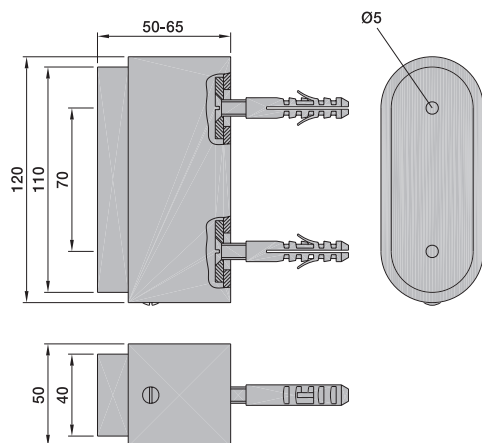
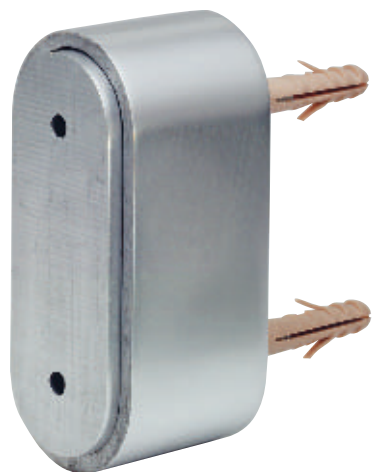
Detailed instructions are supplied with each unit. Off-centre drill holes in the wall can be rectified with a shim, the screw holes in the handrail can be marked very easily using marking aids and possible unevenness of the wall can be compensated by an oblong hole in the support.

## Order example

Piece	Item No.	Finish
...piece	4509	22



# Handrail supports



4555.. with fixings

4556.. without fixings

Adjustable for 50 - 65 mm clearance

Two-piece, made of aluminium

## Standard finish

- a) Aluminium, E4 treated
  - .22 KWS 1 silver anodised
  - .23 KWS 2 nickel-silver anodised
  - .24 KWS 3 brass-coloured anodised
  - .28 KWS 5 dark brown anodised
- b) Aluminium, E5 treated
  - .31 KWS 1 silver anodised
  - .32 KWS 2 nickel silver anodised
  - .33 KWS 3 brass-coloured anodised
  - .37 KWS 5 dark brown anodised
- c) Aluminium
  - .70 plastic coated

## Packing Unit

2 pieces

## Weight per piece

Aluminium 0.500 kg

## Mounting

The drill holes should be marked at the planned positions on the wall where the handrail should go with a distance of 800 - 1000 mm. The holes should be bored and the wall supports should be screwed on the wall. The counter elements should be fastened at the respective positions on the handrail, pressed onto the wall supports and joined by a set screw.

Detailed instructions are supplied with each unit. Off-centre drill holes in the wall can be rectified with a shim and possible unevenness of the wall can be compensated by an oblong hole in the support.

## Order example

Piece	Item No.	Finish
...piece	4555	22

- 4580.. for 55 mm clearance
- 4581.. for 75 mm clearance
- 4582.. for 100 mm clearance
- 4583.. for 120 mm clearance
- 4584.. for 150 mm clearance

With concave rest R = 25 mm  
For building in

Made of aluminium

## Standard finish

- a) Aluminium, E5 treated
  - .31 KWS 1 silver anodised
  - .32 KWS 2 nickel silver anodised
  - .33 KWS 3 brass-coloured anodised
  - .37 KWS 5 dark brown anodised
- b) Aluminium
  - .70 plastic coated

## Packing Unit

6 pieces

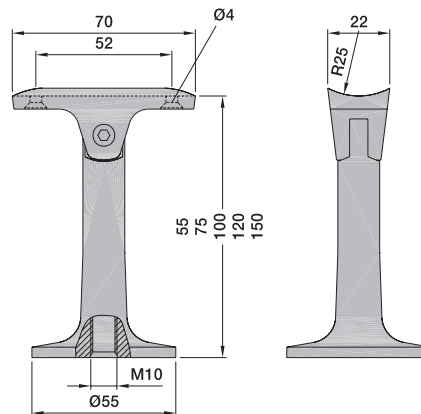
## Weight per piece (4582..)

Aluminium 0.120 kg

## Mounting

These handrail supports are only suitable for vertical mounting. The distance between the supports should not exceed 800 - 1000 mm depending on the construction of the wall and the load.

Also available with rest R = 20 mm.



- 4585.. for 55 mm clearance
- 4586.. for 75 mm clearance
- 4587.. for 100 mm clearance
- 4588.. for 120 mm clearance
- 4589.. for 150 mm clearance

With concave rest R = 25 mm  
For face fixing

Made of aluminium

Accessory: hanger bolt

## Standard finish

- a) Aluminium, E5 treated
  - .31 KWS 1 silver anodised
  - .32 KWS 2 nickel silver anodised
  - .33 KWS 3 brass-coloured anodised
  - .37 KWS 5 dark brown anodised
- b) Aluminium
  - .70 plastic coated

## Packing Unit

6 pieces

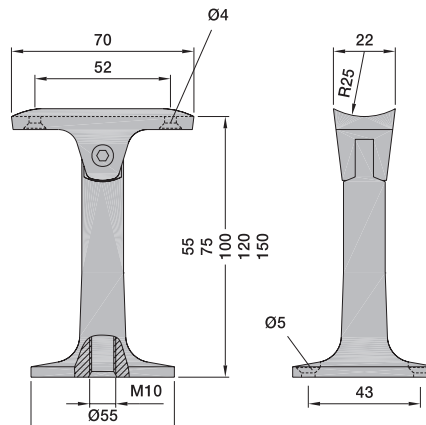
## Weight per piece (4587..)

Aluminium 0.120 kg

## Mounting

These handrail supports are only suitable for vertical mounting. The distance between the supports should not exceed 800 - 1000 mm depending on the construction of the wall and the load.

Also available with rest R = 20 mm.



## Order example

Piece	Item No.	Finish
...piece	4582	31

# Handrail supports



- 4590.. for 55 mm clearance
- 4591.. for 75 mm clearance
- 4592.. for 100 mm clearance
- 4593.. for 120 mm clearance
- 4594.. for 150 mm clearance

With flat rest  
For building in

Made of aluminium

## Standard finish

- a) Aluminium, E5 treated
  - .31 KWS 1 silver anodised
  - .32 KWS 2 nickel silver anodised
  - .33 KWS 3 brass-coloured anodised
  - .37 KWS 5 dark brown anodised
- b) Aluminium
  - .70 plastic coated

## Packing Unit

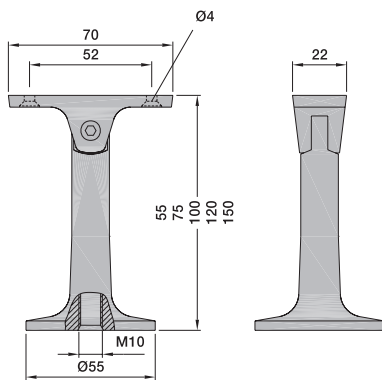
6 pieces

## Weight per piece (4592..)

Aluminium 0.120 kg

## Mounting

These handrail supports are only suitable for vertical mounting. The distance between the supports should not exceed 800 - 1000 mm depending on the construction of the wall and the load.



- 4595.. for 55 mm clearance
- 4596.. for 75 mm clearance
- 4597.. for 100 mm clearance
- 4598.. for 120 mm clearance
- 4599.. for 150 mm clearance

With flat rest  
For face fixing  
Made of aluminium  
Accessory: hanger bolt

## Standard finish

- a) Aluminium, E5 treated
  - .31 KWS 1 silver anodised
  - .32 KWS 2 nickel silver anodised
  - .33 KWS 3 brass-coloured anodised
  - .37 KWS 5 dark brown anodised
- b) Aluminium
  - .70 plastic coated

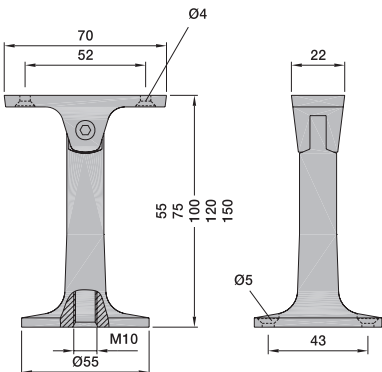
**Packing Unit** 6 pieces

## Weight per piece (4597..)

Aluminium 0.120 kg

## Mounting

These handrail supports are only suitable for vertical mounting. The distance between the supports should not exceed 800 - 1000 mm depending on the construction of the wall and the load.



## Order example

Piece	Item No.	Finish
...piece	4590	31

- 4607.. for 75 mm clearance,  
with M6 thread end
- 4608.. for 75 mm clearance,  
with concave rest
- 4609.. for 75 mm clearance,  
with flat rest
- 4617.. like 4607 with cover 4600
- 4618.. like 4608 with cover 4600
- 4619.. like 4609 with cover 4600

Made of stainless steel

## Standard finish

a) Stainless steel



.82 dull brushed

.83 polished

## Packing Unit

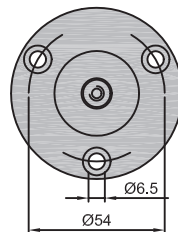
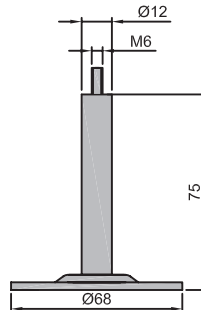
3 pieces

## Weight per piece

Stainless steel 0.350 kg

## Mounting

The distance between the supports should be 800 - 1000 mm depending on the load and the structure of the wall.



- 4600.. Cover for 4607 – 4609

## Standard finish

a) Stainless steel

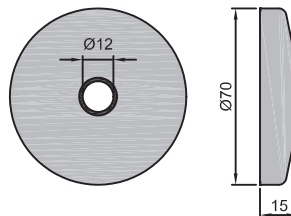


.82 dull brushed

.83 polished

## Weight per piece

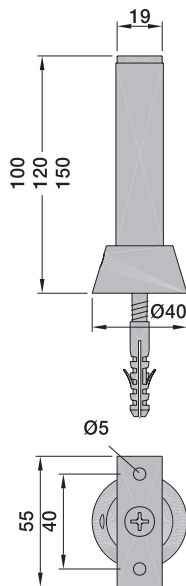
Stainless steel 0.050 kg



## Order example

Piece	Item No.	Finish
...piece	4607	82

# Partition supports



- 4201.. of 100 mm height
- 4202.. of 120 mm height
- 4203.. of 150 mm height

With flat rest

For building in, with fixings  
Made of aluminium or stainless steel

**Standard finish**

- a) Aluminium, E5 treated
  - .31 KWS 1 silver anodised
  - .32 KWS 2 nickel silver anodised
- b) Aluminium
  - .70 plastic coated
- c) Stainless steel
  - .82 dull brushed
  - .83 polished



**Packing Unit**

2 pieces

**Weight per piece (4201..)**

- Aluminium 0.140 kg
- Stainless steel 0.330 kg

**Mounting**

The floor cap with inserted shim should be fitted to the floor, support put in and secured using an attachment screw.

To compensate any divergences while drilling the plug hole each partition support is also supplied with an eccentric disk which, instead of the inserted shim, will compensate divergences of up to 4 mm from centre. The support can be shortened by 5 mm or 10 mm compensating any unevenness in the floor.

Detailed instructions are supplied with each unit.

**Order example**

Piece	Item No.	Finish
...piece	4201	31

- 4211.. of 100 mm height  
 4212.. of 120 mm height  
 4213.. of 150 mm height

With angular rest

For building in, with fixings  
 Made of aluminium or stainless steel

## Standard finish

- a) Aluminium, E5 treated
  - .31 KWS 1 silver anodised
  - .32 KWS 2 nickel silver anodised
- b) Aluminium
  - .70 plastic coated
- c) Stainless steel
  - .82 dull brushed
  - .83 polished



## Packing Unit

2 pieces

## Weight per piece (4211..)

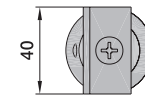
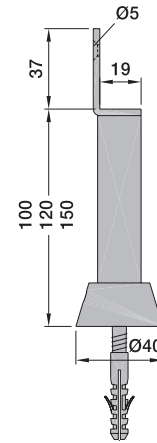
Aluminium	0.150 kg
Stainless steel	0.350 kg

## Mounting

The floor cap with inserted shim should be fitted to the floor, support put in and secured using an attachment screw.

To compensate any divergences while drilling the plug hole each partition support is also supplied with an eccentric disk which, instead of the inserted shim, will compensate divergences of up to 4 mm from centre. The support can be shortened by 5 mm or 10 mm compensating any unevenness in the floor.

Detailed instructions are supplied with each unit.



4

- 4221.. of 100 mm height  
 4222.. of 120 mm height  
 4223.. of 150 mm height

With U-shaped rest for 19 mm wall

For building in, with fixings  
 Made of aluminium or stainless steel

## Standard finish

- a) Aluminium, E5 treated
  - .31 KWS 1 silver anodised
  - .32 KWS 2 nickel silver anodised
- b) Aluminium
  - .70 plastic coated
- c) Stainless steel
  - .82 dull brushed
  - .83 polished



## Packing Unit

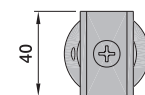
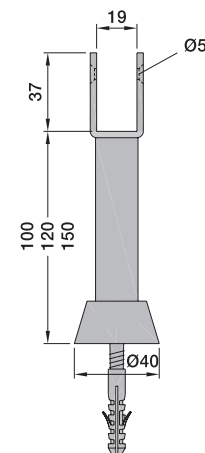
2 pieces

## Mounting

The floor cap with inserted shim should be fitted to the floor, support put in and secured using an attachment screw.

To compensate any divergences while drilling the plug hole each partition support is also supplied with an eccentric disk which, instead of the inserted shim, will compensate divergences of up to 4 mm from centre. The support can be shortened by 5 mm or 10 mm compensating any unevenness in the floor.

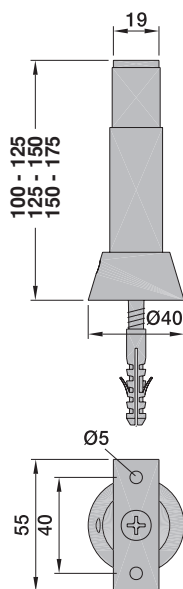
Detailed instructions are supplied with each unit.



## Order example

Piece	Item No.	Finish
...piece	4211	31

# Partition supports



4231.. of 100 - 125 mm height

4232.. of 125 - 150 mm height

4233.. of 150 - 175 mm height

With flat rest

Adjustable in height

For building in, with fixings

Made of aluminium or stainless steel

## Standard finish

- a) Aluminium, E5 treated
  - .31 KWS 1 silver anodised
  - .32 KWS 2 nickel silver anodised

- b) Aluminium
  - .70 plastic coated

- c) Stainless steel



- .82 dull brushed
- .83 polished

## Packing Unit

2 pieces

## Weight per piece (4231..)

Aluminium	0.190 kg
Stainless steel	0.380 kg

## Mounting

The floor cap with inserted shim should be fitted to the floor, support put in, adjusted to the desired height using a spanner and fitted by a locknut. The support should be secured by an attachment screw.

To compensate any divergences while drilling the plug hole each partition support is also supplied with an eccentric disk which, instead of the inserted shim, will compensate divergences of up to 4 mm from centre.

Detailed instructions are supplied with each unit.

## Order example

Piece	Item No.	Finish
...piece	4231	31

4241.. of 100 - 125 mm height

4242.. of 125 - 150 mm height

4243.. of 150 - 175 mm height

With angular rest

Adjustable in height

For building in, with fixings

Made of aluminium or stainless steel

## Standard finish

- a) Aluminium, E5 treated
  - .31 KWS 1 silver anodised
  - .32 KWS 2 nickel silver anodised

- b) Aluminium
  - .70 plastic coated

- c) Stainless steel



- .82 dull brushed
- .83 polished

## Packing Unit

2 pieces

## Weight per piece (4241..)

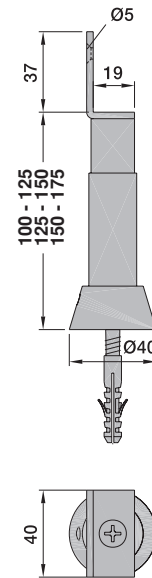
Aluminium 0.200 kg  
Stainless steel 0.400 kg

## Mounting

The floor cap with inserted shim should be fitted to the floor, support put in, adjusted to the desired height using a spanner and fitted by a locknut. The support should be secured by an attachment screw.

To compensate any divergences while drilling the plug hole each partition support is also supplied with an eccentric disk which, instead of the inserted shim, will compensate divergences of up to 4 mm from centre.

Detailed instructions are supplied with each unit.



4251.. of 100 - 125 mm height

4252.. of 125 - 150 mm height

4253.. of 150 - 175 mm height

With U-shaped rest for 19 mm wall

Adjustable in height

For building in, with fixings

Made of aluminium or stainless steel

## Standard finish

- a) Aluminium, E5 treated
  - .31 KWS 1 silver anodised
  - .32 KWS 2 nickel silver anodised

- b) Aluminium
  - .70 plastic coated

- c) Stainless steel



- .82 dull brushed
- .83 polished

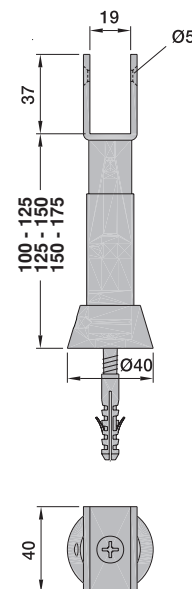
Stainless steel 0.440 kg

## Mounting

The floor cap with inserted shim should be fitted to the floor, support put in, adjusted to the desired height using a spanner and fitted by a locknut. The support should be secured by an attachment screw.

To compensate any divergences while drilling the plug hole each partition support is also supplied with an eccentric disk which, instead of the inserted shim, will compensate divergences of up to 4 mm from centre.

Detailed instructions are supplied with each unit.



## Packing Unit

2 pieces

## Weight per piece (4251)

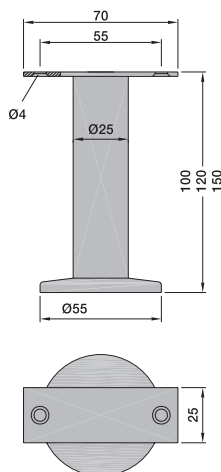
Aluminium 0.210 kg

## Order example

Piece	Item No.	Finish
...piece	4241	31



# Partition supports



4001.. of 100 mm height

4003.. of 120 mm height

4005.. of 150 mm height

With flat rest  
For building in  
Made of steel, aluminium or stainless steel

## Standard finish

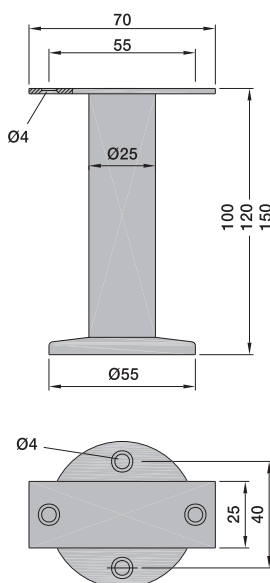
- a) Steel
  - .03 black stove-enamelled
  - .06 electrogalvanised
  - .70 plastic coated
- b) Aluminium, E5 treated
  - .31 KWS 1 silver anodised
  - .32 KWS 2 nickel silver anodised
- c) Stainless steel
  - .82 dull brushed
  - .83 polished

**Packing Unit** 2 pieces

## Weight per piece (4001..)

Steel	0.175 kg
Aluminium	0.190 kg
Stainless steel	0.200 kg

4



4002.. of 100 mm height

4004.. of 120 mm height

4006.. of 150 mm height

With flat rest  
For face fixing  
Made of steel, aluminium or stainless steel

## Standard finish

- a) Steel
  - .03 black stove-enamelled
  - .06 electrogalvanised
  - .70 plastic coated
- b) Aluminium, E5 treated
  - .31 KWS 1 silver anodised
  - .32 KWS 2 nickel silver anodised
- c) Stainless steel
  - .82 dull brushed
  - .83 polished

**Packing Unit** 2 pieces

## Weight per piece (4002..)

Steel	0.115 kg
Aluminium	0.170 kg
Stainless steel	0.130 kg

## Order example

Piece	Item No.	Finish
...piece	4001	03

4009.. of 100 mm height

4011.. of 120 mm height

4013.. of 150 mm height

With angular rest  
For building in  
Made of steel, aluminium or stainless steel

## Standard finish

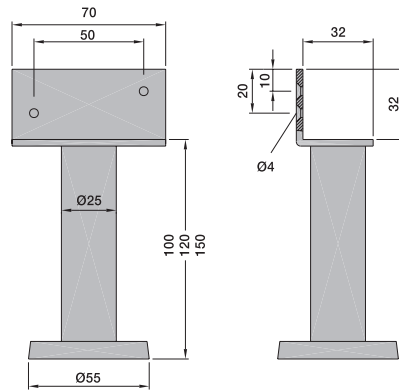
- a) Steel
  - .03 black stove-enamelled
  - .06 electrogalvanised
  - .70 plastic coated
- b) Aluminium, E5 treated
  - .31 KWS 1 silver anodised
  - .32 KWS 2 nickel silver anodised
- c) Stainless steel
  - .82 dull brushed
  - .83 polished



**Packing Unit** 2 pieces

## Weight per piece (4009..)

Steel	0.220 kg
Aluminium	0.210 kg
Stainless steel	0.250 kg



4

4010.. of 100 mm height

4012.. of 120 mm height

4014.. of 150 mm height

With angular rest  
For face fixing  
Made of steel, aluminium or stainless steel

## Standard finish

- a) Steel
  - .03 black stove-enamelled
  - .06 electrogalvanised
  - .70 plastic coated
- b) Aluminium, E5 treated
  - .31 KWS 1 silver anodised
  - .32 KWS 2 nickel silver anodised
- c) Stainless steel
  - .82 dull brushed
  - .83 polished

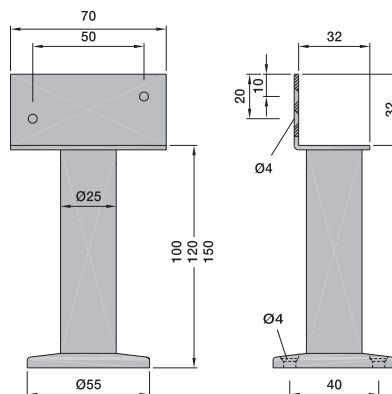


## Packing Unit

2 pieces

## Weight per piece (4010..)

Steel	0.170 kg
Aluminium	0.185 kg
Stainless steel	0.180 kg



## Order example

Piece	Item No.	Finish
...piece	4009	03

# Partition supports



4017..	for 16 mm wall, of 100 mm height
4019..	for 16 mm wall, of 120 mm height
4021..	for 16 mm wall, of 150 mm height
4025..	for 19 mm wall, of 100 mm height
4027..	for 19 mm wall, of 120 mm height
4029..	for 19 mm wall, of 150 mm height

With U-shaped rest

For building in  
Made of steel or stainless steel

## Standard finish

- a) Steel
  - .03 black stove-enamelled
  - .06 electrogalvanised
  - .70 plastic coated
- b) Stainless steel
  - .82 dull brushed
  - .83 polished

## Packing Unit

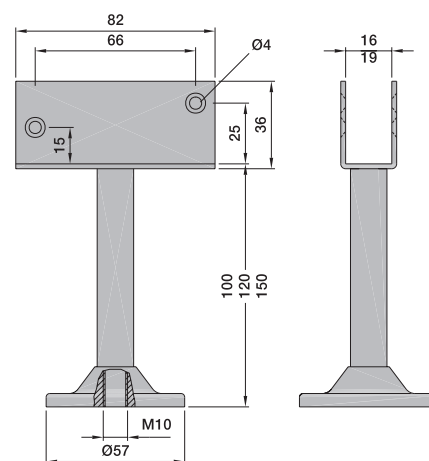
2 pieces

## Weight per piece (4025..)

Steel	0.270 kg
Stainless steel	0.270 kg

## Note

Made of aluminium see item no.  
4067../4167../4267../4068../4168../4268..



4018..	for 16 mm wall, of 100 mm height
4020..	for 16 mm wall, of 120 mm height
4022..	for 16 mm wall, of 150 mm height
4026..	for 19 mm wall, of 100 mm height
4028..	for 19 mm wall, of 120 mm height
4030..	for 19 mm wall, of 150 mm height

With U-shaped rest

For face fixing  
Made of steel or stainless steel

## Standard finish

- a) Steel
  - .03 black stove-enamelled
  - .06 electrogalvanised
  - .70 plastic coated
- b) Stainless steel
  - .82 dull brushed
  - .83 polished

## Packing Unit

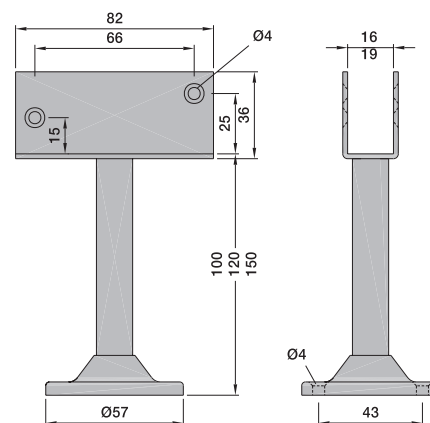
2 pieces

## Weight per piece (4026..)

Steel	0.230 kg
Stainless steel	0.230 kg

## Note

Made of aluminium see item no.  
4069../4169../4269../4070../4170../4270..



## Order example

Piece	Item No.	Finish
...piece	4017	03

**4057..** can be used for heights of up to 150 mm

With flat rest

With floor cap adjustable in height

For building in  
Made of steel with cap of aluminium or completely made of stainless steel

## Standard finish

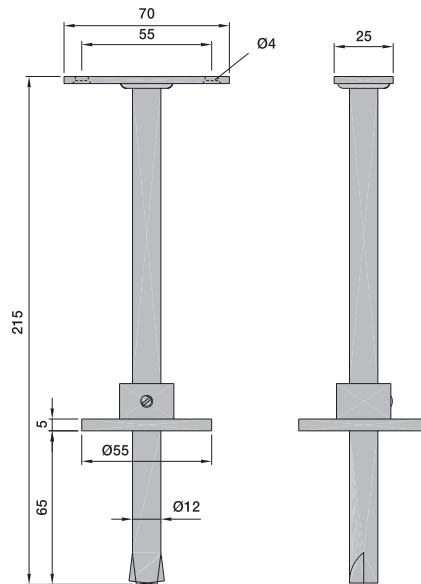
- a) Steel
  - .03 black stove-enamelled
  - .06 electrogalvanised
  - .70 plastic coated
- b) Stainless steel
  - .82 dull brushed
  - .83 polished

## Packing Unit

2 pieces

## Weight per piece

Steel 0.270 kg  
Stainless steel 0.270 kg



**4058..** can be used for heights of up to 150 mm

With angular rest

With floor cap adjustable in height

For building in  
Made of steel with cap of aluminium or completely made of stainless steel

## Standard finish

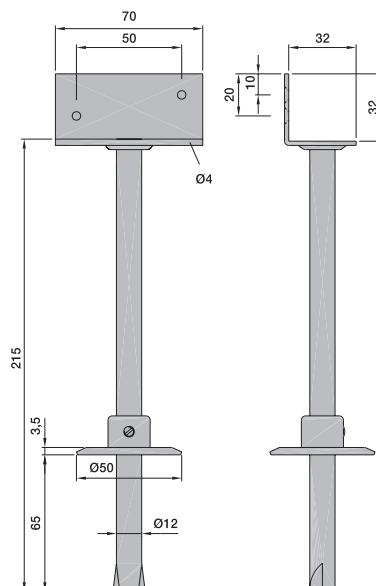
- a) Steel
  - .03 black stove-enamelled
  - .06 electrogalvanised
  - .70 plastic coated
- b) Stainless steel
  - .82 dull brushed
  - .83 polished

## Packing Unit

2 pieces

## Weight per piece

Steel 0.290 kg  
Stainless steel 0.290 kg



## Order example

Piece	Item No.	Finish
...piece	4057	03

# Partition supports

4101.. 100 – 125 mm height

4102.. 125 – 150 mm height

4103.. 150 – 175 mm height

Adjustable in height

For fixing with screws

1) Made of aluminium, adjustment screw and counter plate of steel, electro galvanised

2) Made of stainless steel

## Standard finish

- a) Aluminium, E5 treated
  - .31 KWS 1 silver anodised
  - .32 KWS 2 nickel silver anodised

- b) Aluminium
  - .70 plastic coated

- c) Stainless steel



- .82 dull brushed
- .83 polished

## Packing Unit

2 pieces

## Weight per piece (4101..)

Aluminium 0.190 kg  
Stainless steel 0.330 kg

4290.. 145 - 185 mm height

Concealed fixing, with thread end M8  
Made of aluminium or stainless steel

## Standard finish

- a) Aluminium
  - .41 KWS 1 silver anodised
  - .70 plastic coated

- b) Stainless steel



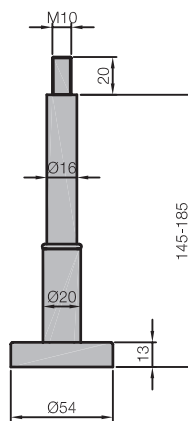
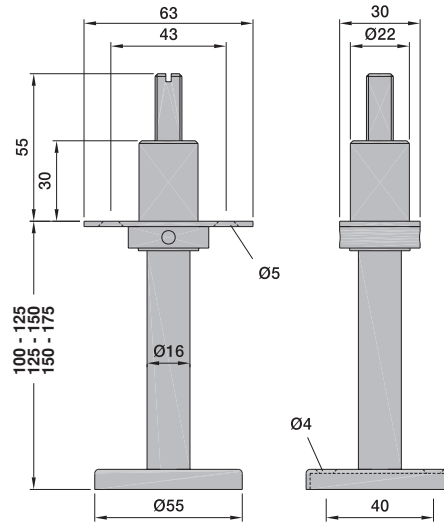
- .82 dull brushed
- .83 polished

## Packing Unit

2 pieces

## Weight per piece

Aluminium 0.200 kg  
Stainless steel 0.310 kg



## Order example

Piece	Item No.	Finish
...piece	4101	31

- 4059.. rest 18 mm wide, of 100 mm height
- 4159.. rest 18 mm wide, of 120 mm height
- 4259.. rest 18 mm wide, of 150 mm height
- 4060.. rest 30 mm wide, of 100 mm height
- 4160.. rest 30 mm wide, of 120 mm height
- 4260.. rest 30 mm wide, of 150 mm height

With flat rest

For building in  
Made of aluminium

## Standard finish

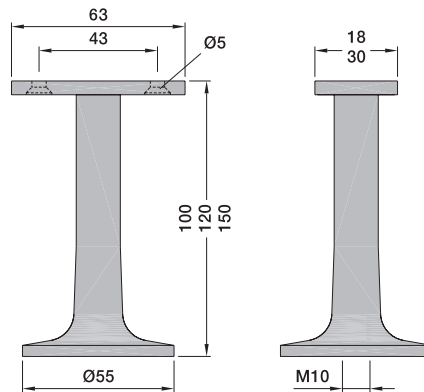
- a) Aluminium, E5 treated
  - .31 KWS 1 silver anodised
  - .32 KWS 2 nickel silver anodised
- b) Aluminium
  - .70 plastic coated

## Packing Unit

2 pieces

## Weight per piece (4059..)

Aluminium 0.120 kg



- 4063.. rest 18 mm wide, of 100 mm height
- 4163.. rest 18 mm wide, of 120 mm height
- 4263.. rest 18 mm wide, of 150 mm height
- 4064.. rest 30 mm wide, of 100 mm height
- 4164.. rest 30 mm wide, of 120 mm height
- 4264.. rest 30 mm wide, of 150 mm height

With flat rest

For face fixing  
Made of aluminium

## Standard finish

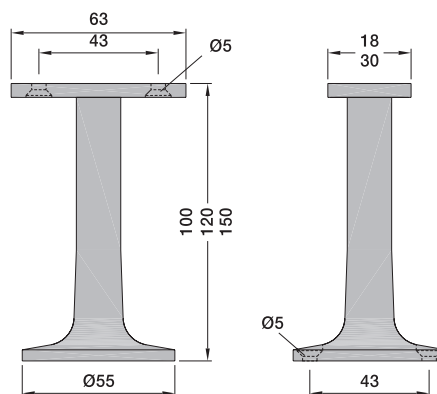
- a) Aluminium, E5 treated
  - .31 KWS 1 silver anodised
  - .32 KWS 2 nickel silver anodised
- b) Aluminium
  - .70 plastic coated

## Packing Unit

2 pieces

## Weight per piece (4063..)

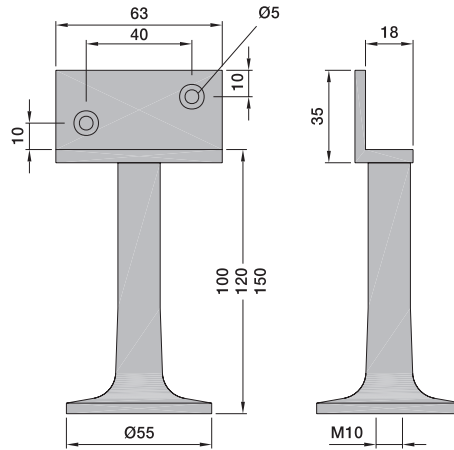
Aluminium 0.090 kg



## Order example

Piece	Item No.	Finish
...piece	4059	31

# Partition supports



4061.. of 100 mm height

4161.. of 120 mm height

4261.. of 150 mm height

With angular rest

For building in  
Made of aluminium

## Standard finish

- a) Aluminium, E5 treated
  - .31 KWS 1 silver anodised
  - .32 KWS 2 nickel silver anodised
- b) Aluminium
  - .70 plastic coated

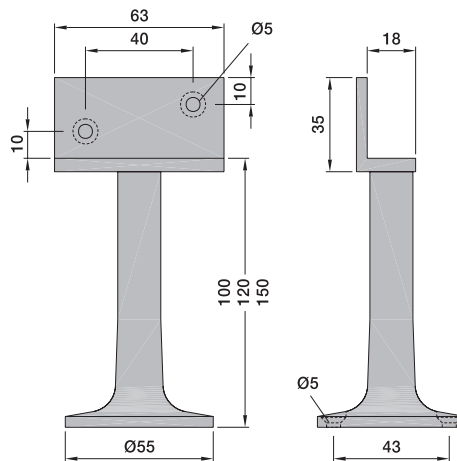
## Packing Unit

2 pieces

**Weight per piece (4061..)**

Aluminium 0.140 kg

4



4065.. of 100 mm height

4165.. of 120 mm height

4265.. of 150 mm height

With angular rest

For face fixing  
Made of aluminium

## Standard finish

- a) Aluminium, E5 treated
  - .31 KWS 1 silver anodised
  - .32 KWS 2 nickel silver anodised
- b) Aluminium
  - .70 plastic coated

## Packing Unit

2 pieces

**Weight per piece (4065..)**

Aluminium 0.110 kg

## Order example

Piece	Item No.	Finish
...piece	4061	31

4067.. for 16 mm wall, of 100 mm height

4167.. for 16 mm wall, of 120 mm height

4267.. for 16 mm wall, of 150 mm height

4068.. for 19 mm wall, of 100 mm height

4168.. for 19 mm wall, of 120 mm height

4268.. for 19 mm wall, of 150 mm height

With U-shaped rest

For building in

Made of aluminium

### Standard finish

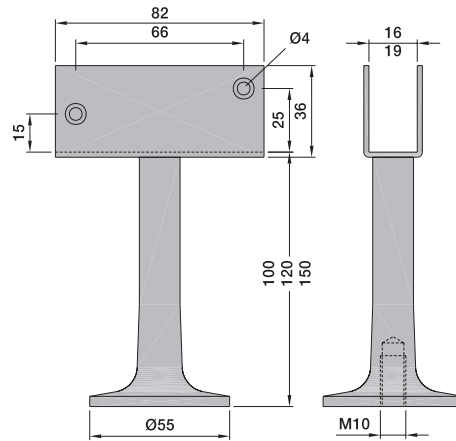
- a) Aluminium, E5 treated  
.31 KWS 1 silver anodised  
.32 KWS 2 nickel silver anodised  
b) Aluminium  
.70 plastic coated

### Packing Unit

2 pieces

**Weight per piece (4068..)**

Aluminium	0.150 kg
-----------	----------



4069.. for 16 mm wall, of 100 mm height

4169.. for 16 mm wall, of 120 mm height

4269.. for 16 mm wall, of 150 mm height

4070.. for 19 mm wall, of 100 mm height

4170.. for 19 mm wall, of 120 mm height

4270.. for 19 mm wall, of 150 mm height

With U-shaped rest

For face fixing

Made of aluminium

### Standard finish

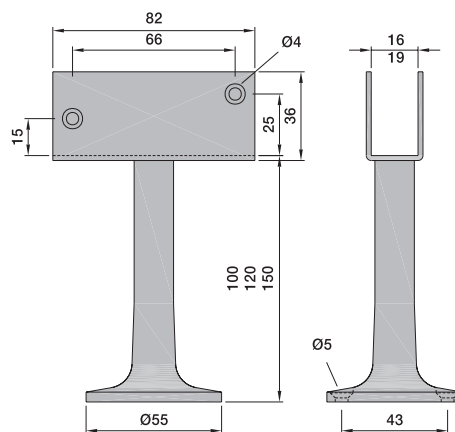
- a) Aluminium, E5 treated  
.31 KWS 1 silver anodised  
.32 KWS 2 nickel silver anodised  
b) Aluminium  
.70 plastic coated

### Packing Unit

2 pieces

**Weight per piece (4070..)**

Aluminium	0.110 kg
-----------	----------



### Order example

<b>Piece</b> ...piece	<b>Item No.</b> 4067	<b>Finish</b> 31
--------------------------	-------------------------	---------------------