



## Sometimes you have to get a grip ...

...and particularly when the door must not have any projecting parts. In this case you should turn to KWS flush handles, e.g. for gymnasium, lift or folding doors. KWS flush handles are either simple, inset handles or are fitted with rings, levers or turning handles.

KWS flush handles are available in materials ranging from galvanised steel to polished brass. All other specific technical data on our flush handles can be found on the following pages.

5

5

Flush ring handles | 212  
Flush handles | 225  
Handles | 229

## Applications and operating methods of flush handles

Flush handles, flush ring handles or gymnasium fittings are always chosen when a door has to be operated without using projecting fittings. The reason for this are generally problems of space or to avoid risk of injury, e.g. in the case of sliding doors, lift doors, garage doors or gymnasium doors.

Flush handles can basically be divided into the following categories:

### **1. Flush handle as a simple handle**

### **2. Flush handle with ring or lever handle for activation**

Products accordingly you find on the following page.

When choosing the correct flush handle, it is also important to check whether a cylinder keyway should be used. This is a priority in the case of flush ring handles and gymnasium fittings. Available keyways are: profile cylinder (PZ), warded lock (BB) and Kaba.

#### ***Please note when installing flush handles:***

*Please check that there is sufficient insertion depth and that the hole dimensions correspond to the diagrams in the catalogue. Again refer to the product-related recommendations on installation.*

# Flush handles | Flush ring handles

## 1. Flush handle as a simple handle



5207



5205



5250



5202

## 2. Flush handle with ring or lever handle for activation



5004



5025



5164



5061

# Overview



Page 212



Page 213



Page 214



Page 214



Page 215



Page 216



Page 217



Page 218



Page 219



Page 220



Page 221



Page 222



Page 223



Page 224



Page 225



Page 225



Page 226



Page 226



Page 227



Page 227



Page 228



Page 229



Page 229



Page 230



Page 230



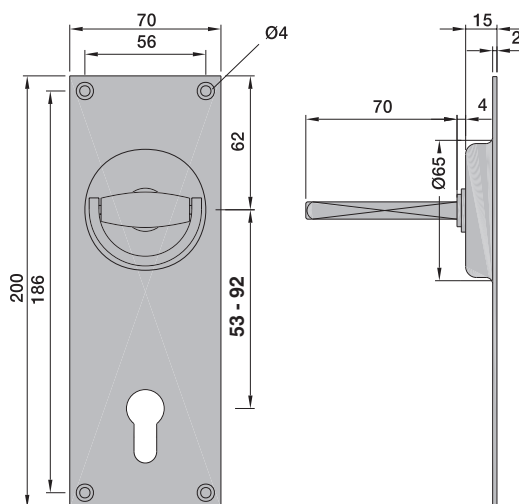
Page 231



Page 231

---

# Flush ring handles



5001..	70 x 200 mm - 8 mm hole
5002..	70 x 200 mm - 8 mm pin
5101..	70 x 200 mm - 7 mm hole
5102..	70 x 200 mm - 7 mm pin

- 1) Grip recess made of steel, with hinged ring of aluminium
- 2) Grip recess and hinged ring made of aluminium
- 3) Grip recess and hinged ring made of brass

Hinged ring pitted fixing, pin riveted

## Standard finish

- a) Steel / Aluminium
  - .02 silver stove-enamelled
  - .03 black stove-enamelled
  - .10 dark brown stove-enamelled
  - .70 plastic coated
- b) Aluminium, E5 treated
  - .31 KWS 1 silver anodised
  - .32 KWS 2 nickel silver anodised
  - .33 KWS 3 brass-coloured anodised
  - .37 KWS 5 dark brown anodised
- c) Brass
  - .62 dull brushed and colourless coated
  - .66 polished and colourless coated

## Weight per piece

Aluminium	0.110 kg
Brass	0.300 kg
Steel / Aluminium	0.250 kg

## Keyway

With or without keyway, e.g. PZ, warded look or KABA  
 minimum distance for PZ keyway = 53 mm  
 maximum distance for PZ keyway = 92 mm

## Note

*There has to be sufficient insertion depth. These ring handles are available only with 7 mm or 8 mm holes or pins.*

*Instead of a ring handle a flush handle (art. 5047../5048..) can be used.*

## Order example

Piece ...piece	Item No.	Finish	Keyway	Distance
	5001	02	PZ	72 mm



# Flush ring handles

5004..	100 x 200 mm - 8 mm hole
5005..	100 x 200 mm - 8 mm pin
5007..	100 x 200 mm - 9 mm hole
5008..	100 x 200 mm - 9 mm pin
5010..	100 x 200 mm - 10 mm hole
5011..	100 x 200 mm - 10 mm pin
5104..	100 x 200 mm - 7 mm hole
5105..	100 x 200 mm - 7 mm pin

- 1) Grip recess made of steel, with hinged ring of aluminium
- 2) Grip recess and hinged ring made of aluminium
- 3) Grip recess and hinged ring made of brass
- 4) Grip recess and hinged ring made of stainless steel

Hinged ring fits fixing, pin riveted

## Standard finish

### a) Steel / Aluminium

- .02 silver stove-enamelled
- .03 black stove-enamelled
- .10 dark stove-enamelled
- .70 plastic coated

### b) Aluminium, E5 treated

- .31 KWS 1 silver anodised
- .32 KWS 2 nickel silver anodised
- .33 KWS 3 brass-coloured anodised
- .37 KWS 5 dark brown anodised

### c) Brass

- .62 dull brushed and colourless coated
- .66 polished and colourless coated

### d) Stainless steel



- .82 dull brushed
- .83 polished

## Weight per piece

Aluminium	0.150 kg
Brass	0.480 kg
Stainless steel	0.430 kg
Steel / Aluminium	0.380 kg

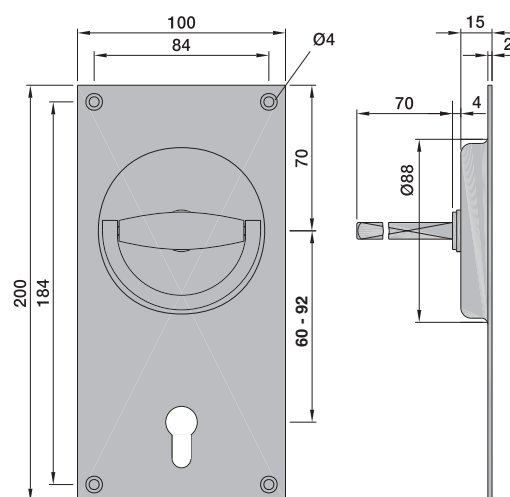
## Keyway

With or without Keyway e.g. PZ, warded look, KABA  
 minimum distance for PZ Keyway = 60 mm  
 maximum distance for PZ Keyway = 92 mm

## Note

There has to be sufficient insertion depth. These ring handles made of stainless steel are available only with 7 mm, 8 mm or 9 mm holes or pins.

The flush ring handles nos. 5007.. and 5008.. are available in steel electrogalvanised (finish .06) under item nos. 5907.. or 5908..

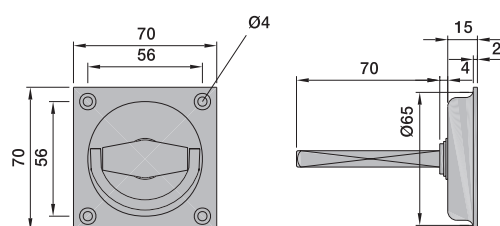


## Order example

Piece ...piece	Item No.	Finish	Keyway	Distance
	5004	02	PZ	92 mm



# Flush ring handles



5013.. 70 x 70 mm - 8 mm hole

5014.. 70 x 70 mm - 8 mm pin

5113.. 70 x 70 mm - 7 mm hole

5114.. 70 x 70 mm - 7 mm pin

1) Grip recess made of steel, with hinged ring of aluminium

2) Grip recess and hinged ring made of aluminium

3) Grip recess and hinged ring made of brass

Hinged ring pits fixing, pin riveted

## Standard finish

- a) Steel / Aluminium
  - .02 silver stove-enamelled
  - .03 black stove-enamelled
  - .10 dark brown stove-enamelled
  - .70 plastic coated
- b) Aluminium, E5 treated
  - .31 KWS 1 silver anodised
  - .32 KWS 2 nickel silver anodised
  - .33 KWS 3 brass-coloured anodised
  - .37 KWS 5 dark brown anodised

c) Brass

- .62 dull brushed and colourless coated
- .66 polished and colourless coated

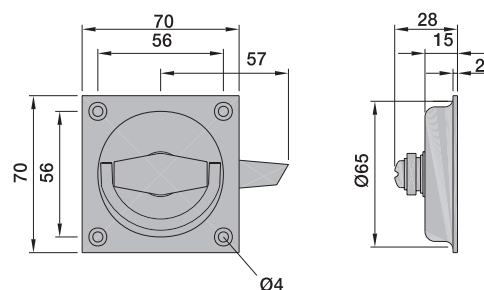
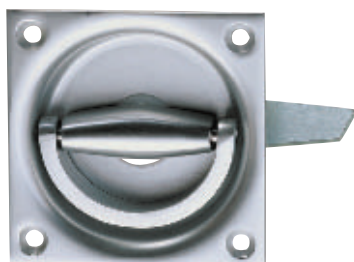
## Weight per piece

Aluminium	0.060 kg
Brass	0.170 kg
Steel / Aluminium	0.120 kg

## Note

There has to be sufficient insertion depth. These ring handles are available only with 7 mm or 8 mm holes or pins; With entering catch see item no. 5054.. Instead of a ring handle a flush handle (item 5047../5048..) can be used.

5



5054.. 70 x 70 mm - with entering catch

1) Grip recess made of steel, with hinged ring of aluminium

2) Grip recess and hinged ring made of aluminium

3) Grip recess and hinged ring made of brass

Hinged ring pits fixing

Also available in 90 x 90 mm (item no. 5051..)

## Standard finish

- a) Steel / Aluminium
  - .02 silver stove-enamelled
  - .03 black stove-enamelled
  - .10 dark brown stove-enamelled
  - .70 plastic coated
- b) Aluminium, E5 treated
  - .31 KWS 1 silver anodised
  - .32 KWS 2 nickel silver anodised
  - .33 KWS 3 brass-coloured anodised
  - .37 KWS 5 dark brown anodised
- c) Brass
  - .62 dull brushed and colourless coated
  - .66 polished and colourless coated

## Weight per piece

Aluminium	0.090 kg
Brass	0.200 kg
Steel / Aluminium	0.150 kg

## Order example

Piece	Item No.	Finish
...piece	5013	02

5016..	90 x 90 mm - 8 mm hole
5017..	90 x 90 mm - 8 mm pin
5019..	90 x 90 mm - 9 mm hole
5020..	90 x 90 mm - 9 mm pin
5022..	90 x 90 mm - 10 mm hole
5023..	90 x 90 mm - 10 mm pin
5116..	90 x 90 mm - 7 mm hole
5117..	90 x 90 mm - 7 mm pin

## Weight per piece

Aluminium	0.090 kg
Brass	0.280 kg
Stainless steel	0.250 kg
Steel / Aluminium	0.200 kg

## Note

There has to be sufficient insertion depth. These ring handles of stainless steel are available only with 7 mm, 8 mm or 9 mm holes or pins;

With entering catch see item 5051..

The flush ring handles nos. 5019.. and 5020.. are available in steel electrogalvanised (finish .06) under item nos. 5919.. or 5920..

1) Grip recess made of steel, with hinged ring of aluminium

2) Grip recess and hinged ring made of aluminium

3) Grip recess and hinged ring made of brass

4) Grip recess and hinged ring made of stainless steel

Hinged ring fits fixing, pin riveted

## Standard finish

### a) Steel / Aluminium

- .02 silver stove-enamelled
- .03 black stove-enamelled
- .10 dark brown stove-enamelled
- .70 plastic coated

### b) Aluminium, E5 treated

- .31 KWS 1 silver anodised
- .32 KWS 2 nickel silver anodised
- .33 KWS 3 brass-coloured anodised
- .37 KWS 5 dark brown anodised

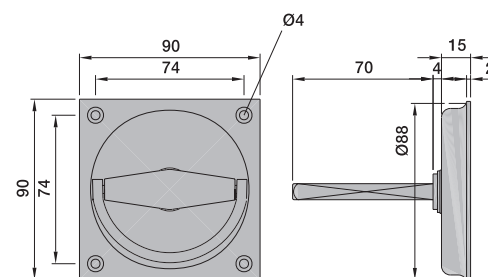
### c) Brass

- .62 dull brushed and colourless coated
- .66 polished and colourless coated

### d) Stainless steel



- .82 dull brushed
- .83 polished



## Order example

Piece	Item No.	Finish
...piece	5016	02

# Flush ring handles

5051.. 90 x 90 mm - with entering catch

- 1) Grip recess made of steel, with hinged ring of aluminium
- 2) Grip recess and hinged ring made of aluminium
- 3) Grip recess and hinged ring made of brass
- 4) Grip recess and hinged ring made of stainless steel

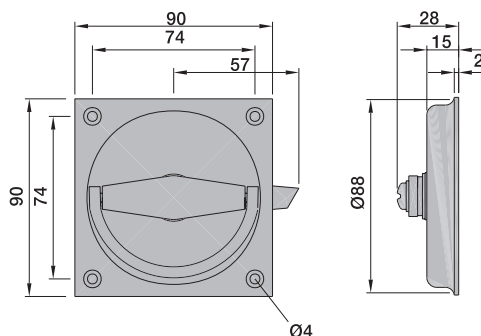
Hinged ring pitts fixing, pin riveted

## Standard finish

- a) Steel / Aluminium
  - .02 silver stove-enamelled
  - .03 black stove-enamelled
  - .10 dark brown stove-enamelled
  - .70 plastic coated
- b) Aluminium, E5 treated
  - .31 KWS 1 silver anodised
  - .32 KWS 2 nickel silver anodised
  - .33 KWS 3 brass-coloured anodised
  - .37 KWS 5 dark brown anodised
- c) Brass
  - .62 dull brushed and colourless coated
  - .66 polished and colourless coated
- d) Stainless steel
  - .82 dull brushed
  - .83 polished

## Weight per piece

Aluminium	0.120 kg
Brass	0.310 kg
Stainless steel	0.280 kg
Steel / Aluminium	0.230 kg



## Order example

Piece	Item No.	Finish
...piece	5051	02

# Flush ring handles

5025..	100 x 100 mm - 8 mm hole
5026..	100 x 100 mm - 8 mm pin
5028..	100 x 100 mm - 9 mm hole
5029..	100 x 100 mm - 9 mm pin
5031..	100 x 100 mm - 10 mm hole
5032..	100 x 100 mm - 10 mm pin
5125..	100 x 100 mm - 7 mm hole
5126..	100 x 100 mm - 7 mm pin

## Weight per piece

Aluminium	0.100 kg
Brass	0.310 kg
Stainless steel	0.280 kg
Steel / Aluminium	0.230 kg

## Note

*There has to be sufficient insertion depth. These ring handles of stainless steel are available only with 7 mm, 8 mm or 9 mm holes or pins.*

*The flush ring handles nos. 5028.. and 5029.. are available in steel electrogalvanised (finish .06) under item nos. 5928.. or 5929..*

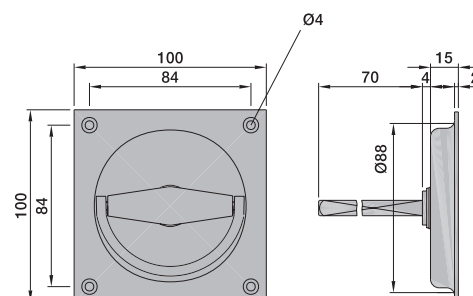


- 1) Grip recess made of steel, with hinged ring of aluminium
- 2) Grip recess and hinged ring made of aluminium
- 3) Grip recess and hinged ring made of brass
- 4) Grip recess and hinged ring made of stainless steel

Hinged ring pitted fixing, pin riveted

## Standard finish

- a) Steel / Aluminium
  - .02 silver stove-enamelled
  - .03 black stove-enamelled
  - .10 dark brown stove-enamelled
  - .70 plastic coated
- b) Aluminium, E5 treated
  - .31 KWS 1 silver anodised
  - .32 KWS 2 nickel silver anodised
  - .33 KWS 3 brass-coloured anodised
  - .37 KWS 5 dark brown anodised
- c) Brass
  - .62 dull brushed and colourless coated
  - .66 polished and colourless coated
- d) Stainless steel
  - .82 dull brushed
  - .83 polished

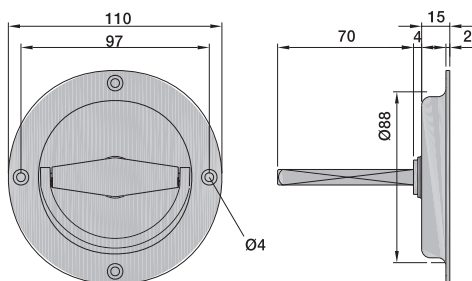


5

## Order example

Piece	Item No.	Finish
...piece	5025	02

# Flush ring handles



5034..	Ø 110 mm - 8 mm hole
5035..	Ø 110 mm - 8 mm pin
5037..	Ø 110 mm - 9 mm hole
5038..	Ø 110 mm - 9 mm pin
5040..	Ø 110 mm - 10 mm hole
5041..	Ø 110 mm - 10 mm pin
5134..	Ø 110 mm - 7 mm hole
5135..	Ø 110 mm - 7 mm pin

- 1) Grip recess made of steel, with hinged ring of aluminium
- 2) Grip recess and hinged ring made of aluminium
- 3) Grip recess and hinged ring made of brass
- 4) Grip recess and hinged ring made of stainless steel

Hinged ring pits fixing, pin riveted

## Standard finish

- a) Steel / Aluminium
  - .02 silver stove-enamelled
  - .03 black stove-enamelled
  - .10 dark brown stove-enamelled
  - .70 plastic coated
- b) Aluminium, E5 treated
  - .31 KWS 1 silver anodised
  - .32 KWS 2 nickel silver anodised
  - .33 KWS 3 brass-coloured anodised
  - .37 KWS 5 dark brown anodised
- c) Brass
  - .62 dull brushed and colourless coated
  - .66 polished and colourless coated
- d) Stainless steel
  - .82 dull brushed
  - .83 polished

## Weight per piece

Aluminium	0.100 kg
Brass	0.290 kg
Stainless steel	0.260 kg
Steel / Aluminium	0.210 kg

## Note

There has to be sufficient insertion depth. These ring handles of stainless steel are available only with 7 mm, 8 mm or 9 mm holes or pins.

The flush ring handles nos. 5037.. and 5038.. are available in steel electrogalvanised (finish .06) under item nos. 5937.. or 5938..

## Order example

Piece	Item No.	Finish
...piece	5034	02

5047.. 70 x 70 mm - 8 mm hole

5048.. 70 x 70 mm - 8 mm pin

5147.. 70 x 70 mm - 7 mm hole

5148.. 70 x 70 mm - 7 mm pin

1) Grip recess made of steel, with flush handle of aluminium

2) Grip recess and flush handle made of aluminium

Flush handle pits fixing, pin riveted

## Standard finish

### a) Steel / Aluminium

- .02 silver stove-enamelled
- .03 black stove-enamelled
- .10 dark brown stove-enamelled
- .70 plastic coated

### b) Aluminium, E5 treated

- .31 KWS 1 silver anodised
- .32 KWS 2 nickel silver anodised
- .33 KWS 3 brass-coloured anodised
- .37 KWS 5 dark brown anodised

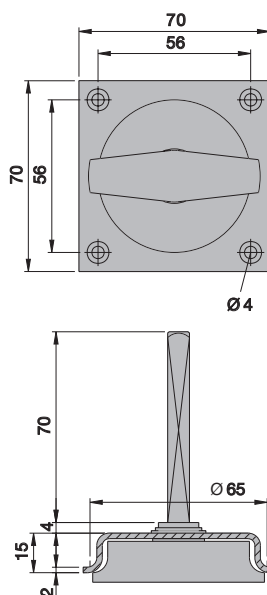
## Weight per piece

Aluminium 0.060 kg

Steel / Aluminium 0.120 kg

## Note

There has to be sufficient insertion depth. These ring handles are available only with 7 mm or 8 mm holes or pins.



## Order example

Piece ...piece	Item No. 5047	Finish 02
-------------------	------------------	--------------

# Flush ring handles

5043..	145 x 115 mm - 8 mm hole
5044..	145 x 115 mm - 8 mm pin
5045..	145 x 115 mm - 9 mm hole
5046..	145 x 115 mm - 9 mm pin

1) Grip recess made of steel, with hinged ring of aluminium

2) Grip recess and hinged ring made of aluminium

Hinged ring pitted fixing, pin riveted

## Standard finish

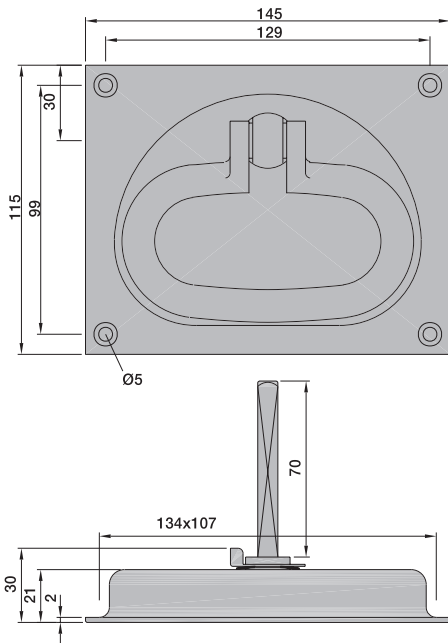
- a) Steel / Aluminium
  - .02 silver stove-enamelled
  - .03 black stove-enamelled
  - .10 dark brown stove-enamelled
  - .70 plastic coated
- b) Aluminium, E5 treated
  - .31 KWS 1 silver anodised
  - .32 KWS 2 nickel silver anodised
  - .33 KWS 3 brass-coloured anodised
  - .37 KWS 5 dark brown anodised

## Weight per piece

Aluminium	0.230 kg
Steel / Aluminium	0.440 kg

## Note

*There has to be sufficient insertion depth. This flush ring handle cannot be used for back to back fixing or with lever handle or door knob.*



## Order example

Piece	Item No.	Finish
...piece	5043	02



5160.. 145 x 165 mm - 8 mm hole

5161.. 145 x 165 mm - 8 mm pin

5162.. 145 x 165 mm - 9 mm hole

5163.. 145 x 165 mm - 9 mm pin

1) Grip recess made of steel, with hinged ring of aluminium

2) Grip recess and hinged ring made of aluminium

Hinged ring fits fixing, pin riveted

## Standard finish

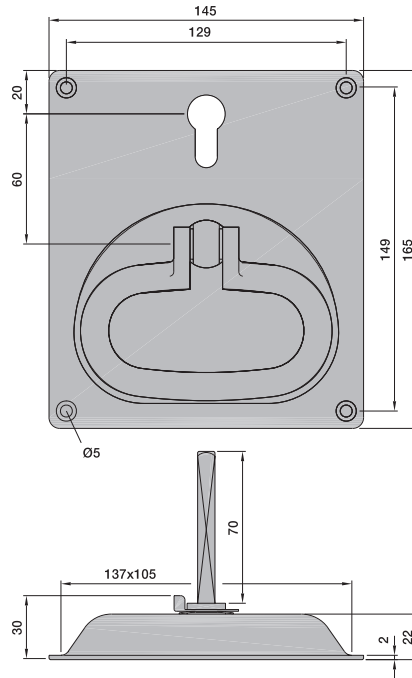
- a) Steel / Aluminium
  - .02 silver stove-enamelled
  - .03 black stove-enamelled
  - .10 dark brown fire varnished
  - .70 plastic coated
- b) Aluminium, E5 treated
  - .31 KWS 1 silver anodised
  - .32 KWS 2 nickel silver anodised
  - .33 KWS 3 brass-coloured anodised
  - .37 KWS 5 dark brown anodised

## Keyway

Without keyway or with 60 mm profile cylinder (PZ) keyway

## Note

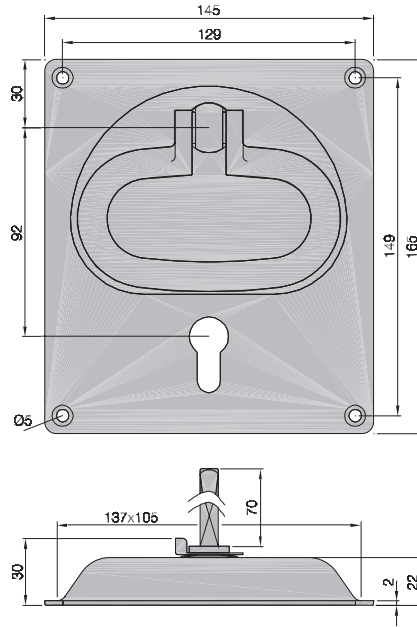
There has to be sufficient insertion depth.



## Order example

Piece	Item No.	Finish	Keyway	Distance
...piece	5160	31	PZ	60 mm

# Flush ring handles



5164.. 145 x 165 mm - 8 mm hole

5165.. 145 x 165 mm - 8 mm pin

5166.. 145 x 165 mm - 9 mm hole

5167.. 145 x 165 mm - 9 mm pin

1) Grip recess made of steel, with hinged ring of aluminium

2) Grip recess and hinged ring made of aluminium

Hinged ring pitts fixing, pin riveted

## Standard finish

- a) Steel / Aluminium
  - .02 silver stove-enamelled
  - .03 black stove-enamelled
  - .10 dark brown stove-enamelled
  - .70 plastic coated
- b) Aluminium, E5 treated
  - .31 KWS 1 silver anodised
  - .32 KWS 2 nickel silver anodised
  - .33 KWS 3 brass-coloured anodised
  - .37 KWS 5 dark brown anodised

## Keyway

Without keyway or with 92 mm profile cylinder (PZ) keyway

## Note

*There has to be sufficient insertion depth.*

5

## Order example

Piece	Item No.	Finish	Keyway	Distance
...piece	5164	02	PZ	92 mm

5055..	170 x 170 mm - 8 mm hole
5056..	170 x 170 mm - 8 mm pin
5058..	170 x 170 mm - 9 mm hole
5059..	170 x 170 mm - 9 mm pin

- 1) Grip recess made of steel, with hinged ring of aluminium
  - 2) Grip recess and hinged ring made of aluminium
- With inserted hinged ring pitts fixing, pin riveted

## Standard finish

- a) Steel / Aluminium
  - .02 silver stove-enamelled
  - .03 black stove-enamelled
  - .10 dark brown stove-enamelled
  - .70 plastic coated
- b) Aluminium, E5 treated
  - .31 KWS 1 silver anodised
  - .32 KWS 2 nickel silver anodised
  - .33 KWS 3 brass-coloured anodised
  - .37 KWS 5 dark brown anodised

## Weight per piece

Aluminium	0.250 kg
Steel / Aluminium	0.500 kg

## Keyway

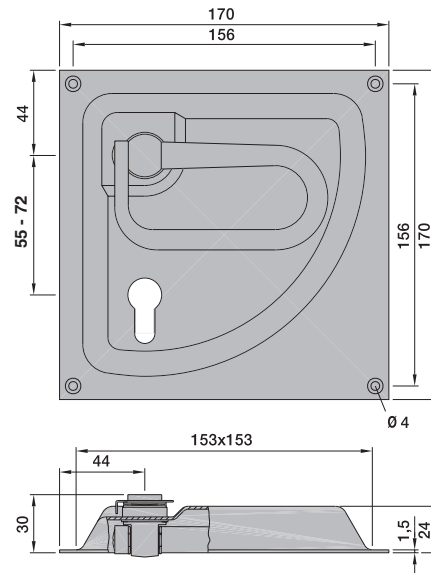
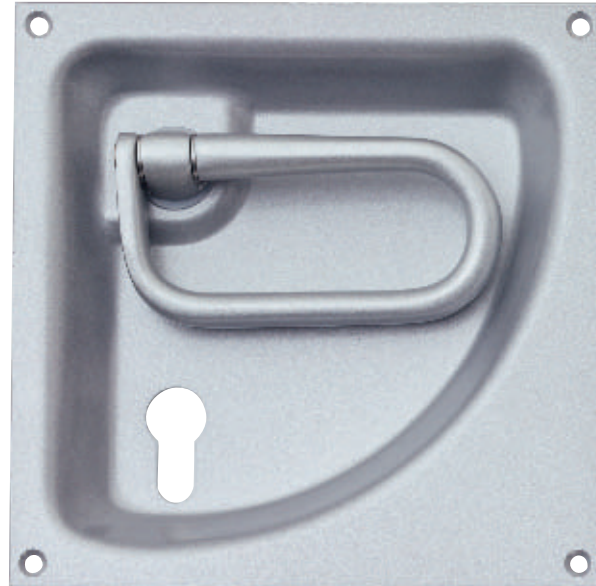
With or without keyway, e.g. PZ, KABA, warded look (BB)  
 minimum distance for PZ keyway - 55 mm  
 maximum distance for PZ keyway - 72 mm

## Note

*There has to be sufficient insertion depth.  
 These ring handles are available only with 8 mm or 9 mm holes or pins.*

*Similar door fittings made of stainless steel are available under item nos. 5061../5062.. and 5064../5065..*

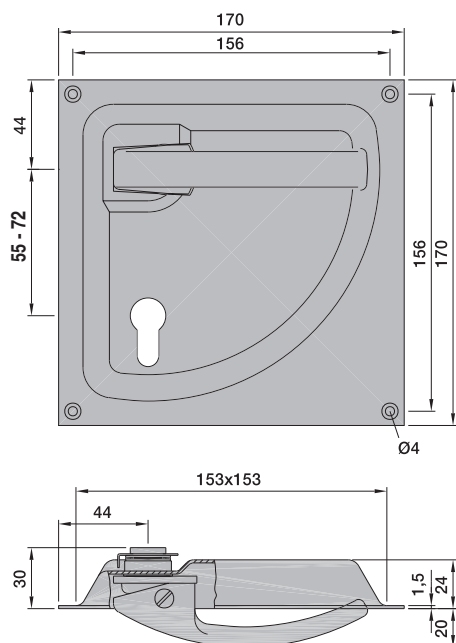
*The drawing shows right hand door fitting.*



## Order example

Piece ...piece	Item No.	Finish	Keyway	Distance	rh/lh rs
	5055	02	PZ	72 mm	

# Flush handles



5061.. 170 x 170 mm - 8 mm hole

5062.. 170 x 170 mm - 8 mm pin

5064.. 170 x 170 mm - 9 mm hole

5065.. 170 x 170 mm - 9 mm pin

1) Grip recess made of steel, with flush lever handle of aluminium

2) Grip recess and flush lever handle made of aluminium

3) Grip recess and flush lever handle made of stainless steel

Inserted flush lever handle pin fixing, pin riveted

## Standard finish

- a) Steel / Aluminium
  - .02 silver stove-enamelled
  - .03 black stove-enamelled
  - .10 dark brown stove-enamelled
  - .70 plastic coated
- b) Aluminium, E5 treated
  - .31 KWS 1 silver anodised
  - .32 KWS 2 nickel silver anodised
  - .33 KWS 3 brass-coloured anodised
  - .37 KWS 5 dark brown anodised
- c) Stainless steel
  - .82 dull brushed
  - .83 polished

## Weight per piece

Aluminium	0.220 kg
Stainless steel	0.550 kg
Steel / Aluminium	0.480 kg

## Keyway

With or without keyway, e.g. PZ, KABA, warded look (BB)  
 minimum distance for PZ keyway - 55 mm  
 maximum distance for PZ keyway - 72 mm

## Note

*There has to be sufficient insertion depth.  
 These door fittings are available only with 8 mm or 9 mm holes or pins.  
 The drawing shows right hand door fitting.*

## Order example

Piece ...piece	Item No.	Finish	Keyway	Distance	rh/lh
	5061	02	PZ	72 mm	rs

## 5201.. 90 x 130 mm

- 1) Made of aluminium stove-enamelled  
or plastic-coated with back plate of steel
- 2) Made of aluminium anodised with back plate  
of aluminium

### Standard finish

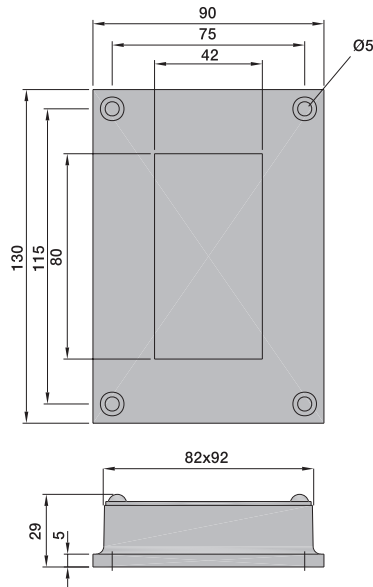
- a) Steel / Aluminium
  - .02 silver stove-enamelled
  - .03 black stove-enamelled
  - .10 dark brown stove-enamelled
  - .70 plastic coated
- b) Aluminium, E5 treated
  - .31 KWS 1 silver anodised
  - .32 KWS 2 nickel silver anodised
  - .33 KWS 3 brass-coloured anodised
  - .37 KWS 5 dark brown anodised

### Packing Unit

8 pieces

### Weight per piece

Aluminium 0.230 kg  
Steel / Aluminium 0.290 kg



## 5202.. 60 x 140 mm

## 5203.. 80 x 175 mm

- 1) Made of aluminium stove-enamelled  
or plastic-coated with back plate of steel
- 2) Made of aluminium anodised with back plate  
of aluminium

### Standard finish

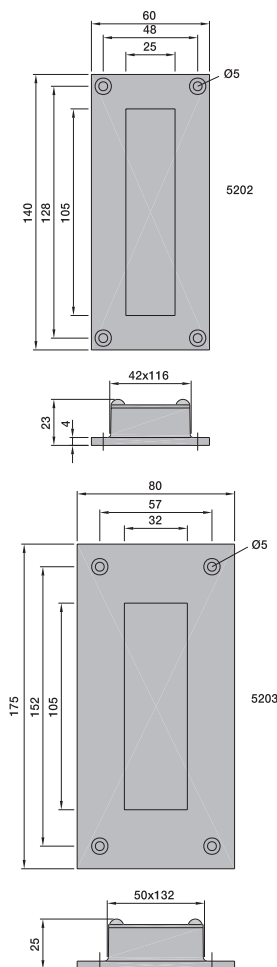
- a) Steel / Aluminium
  - .02 silver stove-enamelled
  - .03 black stove-enamelled
  - .10 dark brown stove-enamelled
  - .70 plastic coated
- b) Aluminium, E5 treated
  - .31 KWS 1 silver anodised
  - .32 KWS 2 nickel silver anodised
  - .33 KWS 3 brass-coloured anodised
  - .37 KWS 5 dark brown anodised

### Packing Unit

5202 10 pieces  
5203 5 pieces

### Weight per piece

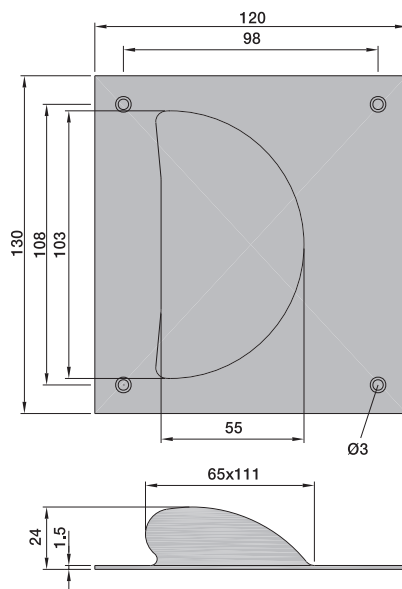
Aluminium 0.130 kg  
Steel / Aluminium 0.170 kg



### Order example

Piece ...piece	Item No. 5201	Finish 02
-------------------	------------------	--------------

# Flush handles



**5205..** 120 x 130 mm

Made of steel, aluminium or stainless steel

## Standard finish

- a) Steel
  - .02 silver stove-enamelled
  - .03 black stove-enamelled
  - .06 electrogalvanised
  - .10 dark brown stove-enamelled
  - .70 plastic coated
- b) Aluminium, E5 treated
  - .31 KWS 1 silver anodised
  - .32 KWS 2 nickel silver anodised
  - .33 KWS 3 brass-coloured anodised
  - .37 KWS 5 dark brown anodised
- c) Stainless steel



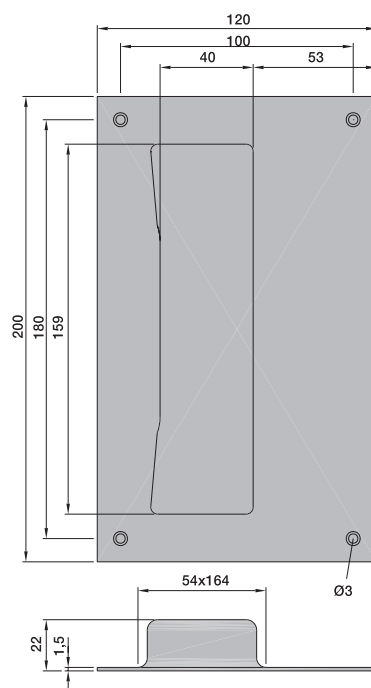
- .82 dull brushed
- .83 polished

**Packing Unit** 10 pieces

## Weight per piece

Steel	0.210 kg
Aluminium	0.070 kg
Stainless steel	0.210 kg

5



**5206..** 120 x 200 mm

Made of steel, aluminium or stainless steel

## Standard finish

- a) Steel
  - .02 silver stove-enamelled
  - .03 black stove-enamelled
  - .06 electrogalvanised
  - .10 dark brown stove-enamelled
  - .70 plastic coated
- b) Aluminium, E5 treated
  - .31 KWS 1 silver anodised
  - .32 KWS 2 nickel silver anodised
  - .33 KWS 3 brass-coloured anodised
  - .37 KWS 5 dark brown anodised
- c) Stainless steel



- .82 dull brushed
- .83 polished

**Packing Unit** 10 pieces

## Weight per piece

Steel	0.330 kg
Aluminium	0.100 kg
Stainless steel	0.330 kg

## Order example

Piece	Item No.	Finish
...piece	5205	02

## 5207.. 90 x 200 mm

Made of steel, aluminium or stainless steel

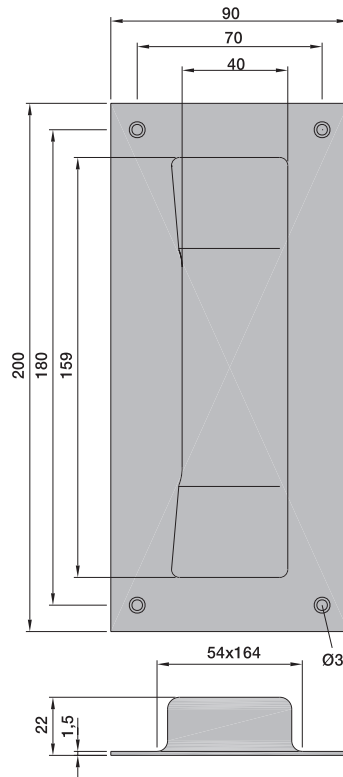
### Standard finish

- a) Steel
  - .02 silver stove-enamelled
  - .03 black stove-enamelled
  - .06 electrogalvanised
  - .10 dark brown stove-enamelled
  - .70 plastic coated
- b) Aluminium, E5 treated
  - .31 KWS 1 silver anodised
  - .32 KWS 2 nickel silver anodised
  - .33 KWS 3 brass-coloured anodised
  - .37 KWS 5 dark brown anodised
- c) Stainless-steel
  - .82 dull brushed
  - .83 polished

**Packing Unit** 10 pieces

### Weight per piece

Steel	0.260 kg
Aluminium	0.080 kg
Stainless steel	0.260 kg



## 5208.. 90 x 200 mm

Made of steel, aluminium or stainless steel

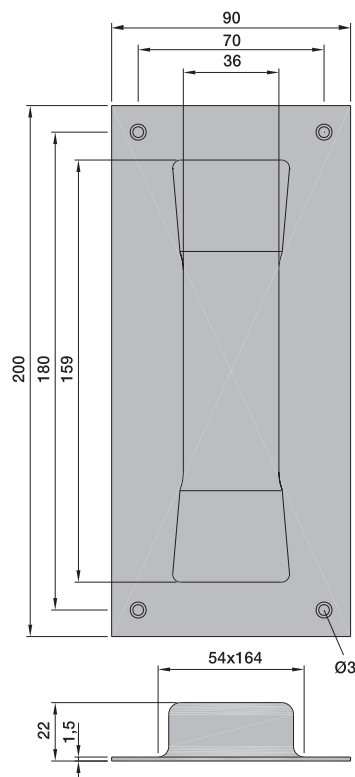
### Standard finish

- a) Steel
  - .02 silver stove-enamelled
  - .03 black stove-enamelled
  - .06 electrogalvanised
  - .10 dark brown stove-enamelled
  - .70 plastic coated
- b) Aluminium, E5 treated
  - .31 KWS 1 silver anodised
  - .32 KWS 2 nickel silver anodised
  - .33 KWS 3 brass-coloured anodised
  - .37 KWS 5 dark brown anodised
- c) Stainless steel
  - .82 dull brushed
  - .83 polished

**Packing Unit** 10 pieces

### Weight per piece

Steel	0.260 kg
Aluminium	0.080 kg
Stainless steel	0.260 kg

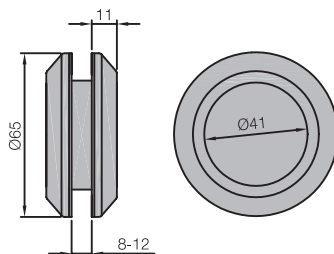


### Order example

Piece	Item No.	Finish
...piece	5207	02



# Flush handles



5250..

Flush handle for glass sliding door  
8 - 12 mm

Outer rings of aluminium, brass or stainless steel,  
inner part of aluminium black-coated

## Standard finish

- a) Aluminium, E6 treated
  - .41 KWS 1 silver anodised
  - .42 KWS 2 nickel-silver anodised
- b) Brass
  - .62 dull brushed and colourless coated
  - .66 polished and colourless coated
- c) Stainless steel
  - .82 dull brushed
  - .83 polished



## Packing Unit

1 piece

## Weight per piece

Steel	0.095 kg
Aluminium	0.220 kg
Stainless steel	0.200 kg

## Mounting

Hole in glass door = 50 mm. Fit the inner part and twist both outer rings with plastic disks firmly in opposite directions.

5

## Order example

Piece	Item No.	Finish
...piece	5250	41

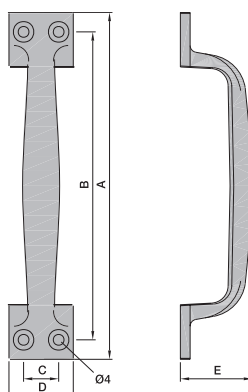
Item no.	Dimensions in mm						Weight kg			
	A	B	C	D	E	VE				
5303..	140	126	13	25	29	10 p.	0.090			
5304..	160	145	16	31	35	10 p.	0.170			
5305..	180	160	18	34	38	10 p.	0.240			
5306..	200	180	19	35	42	10 p.	0.300			
5307..	230	210	20	37	47	5 p.	0.400			

Light-weight model

Made of grey cast iron with countersunk screw holes

## Standard finish

- a) Grey cast iron
- .02 silver stove-enamelled
- .03 black stove-enamelled



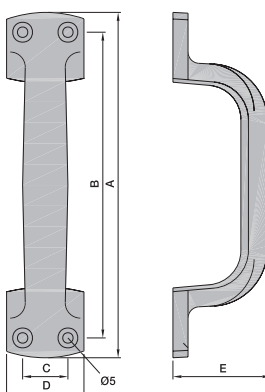
Item no.	Dimensions in mm						Weight kg			
	A	B	C	D	E	VE				
5309..	180	159	25	43	56	5 p.	0,490			
5310..	200	175	25	44	57	5 p.	0,550			
5311..	235	210	30	49	54	5 p.	0,680			

Heavy design

Made of grey cast iron with countersunk screw holes

## Standard finish

- a) Grey cast iron
- .02 silver stove-enamelled
- .03 black stove-enamelled



5

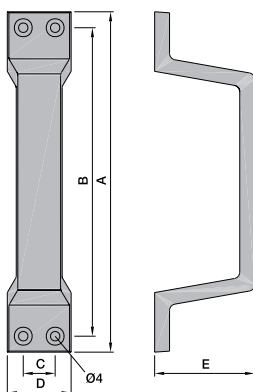
## Order example

Piece ...piece	Item No. 5303	Finish 02
-------------------	------------------	--------------

# Handles



Item no.	Dimensions in mm						Weight		
	A	B	C	D	E	VE	kg		
5312..	140	125	15	30	44	10 p.	0.080		
5313..	160	145	15	30	47	10 p.	0.090		
5314..	180	165	15	30	50	10 p.	0.110		



Made of aluminium cast, with countersunk screw holes

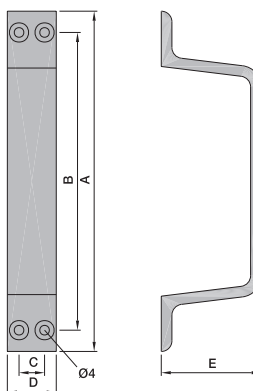
## Standard finish

- a) Aluminium, E5 treated
  - .31 KWS 1 silver anodised
  - .32 KWS 2 nickel silver anodised
  - .33 KWS 3 brass-coloured anodised
  - .37 KWS 5 dark brown anodised
- b) Aluminium
  - .70 plastic coated

5



Item no.	Dimensions in mm						Weight		
	A	B	C	D	E	VE	kg		
5322..	140	120	11	22	44	10 p.	0.050		
5323..	160	140	12	23	47	10 p.	0.070		
5324..	180	160	13	24	50	10 p.	0.085		



Made of aluminium profile, with countersunk screw holes

## Standard finish

- a) Aluminium, E5 treated
  - .31 KWS 1 silver anodised
  - .32 KWS 2 nickel silver anodised
  - .33 KWS 3 brass-coloured anodised
  - .37 KWS 5 dark brown anodised
- b) Aluminium
  - .70 plastic coated

## Order example

Piece	Item No.	Finish
...piece	5312	31

# Handles

Item no.	Dimensions in mm				Weight kg					
	A	B	C	E						
5315..	140	125	15	44	0.080					
5316..	160	145	15	47	0.090					
5317..	180	165	15	50	0.110					

Offset to one side

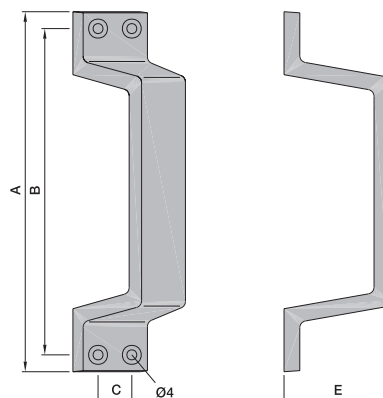
Made of aluminium cast, with countersunk screw holes

## Standard finish

- a) Aluminium, E5 treated
  - .31 KWS 1 silver anodised
  - .32 KWS 2 nickel silver anodised
  - .33 KWS 3 brass-coloured anodised
  - .37 KWS 5 dark brown anodised
- b) Aluminium
  - .70 plastic coated

## Packing Unit

10 pieces



Item no.	Dimensions in mm				Weight kg					
	A	B	C	E						
5325..	140	120	11	44	0,050					
5326..	160	140	12	47	0,070					
5327..	180	160	13	50	0,085					

Offset to one side

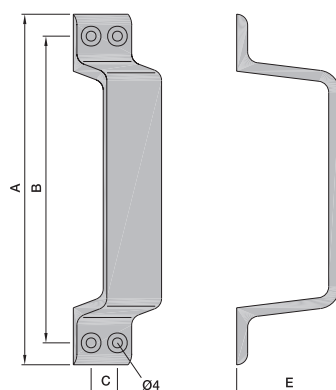
Made of aluminium profile, with countersunk screw holes

## Standard finish

- a) Aluminium, E5 treated
  - .31 KWS 1 silver anodised
  - .32 KWS 2 nickel silver anodised
  - .33 KWS 3 brass-coloured anodised
  - .37 KWS 5 dark brown anodised
- b) Aluminium
  - .70 plastic coated

## Packing Unit

10 pieces



5

## Order example

Piece ...piece	Item No. 5315	Finish 31
-------------------	------------------	--------------