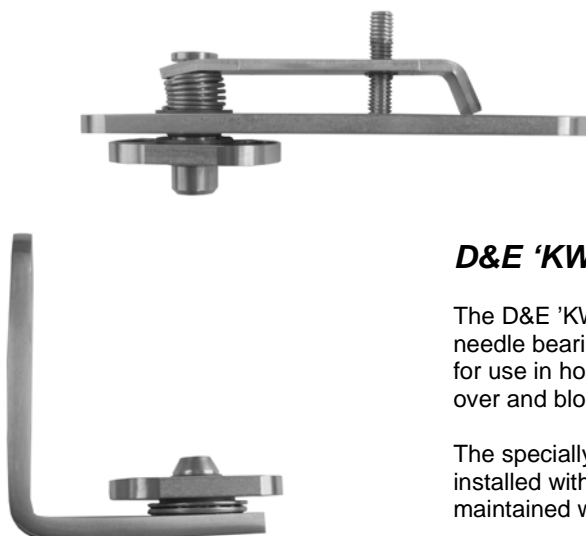


CI/SfB			
31	49		
September 2007			



### **D&E 'KWS' stainless steel pivot hinge - 80Kg**

The D&E 'KWS' pivot set is manufactured from stainless steel and incorporates a needle bearing system (Pat. Pending) that offers ultra smooth operation. Designed for use in hospitals, nursing homes or wherever the ill or infirm run the risk of falling over and blocking an inward opening toilet or bathroom door.

The specially designed pivot set allows the door to swing in either direction. When installed with the DEK625082 or DEK625182 emergency releases, privacy can be maintained whilst allowing entry in an emergency situation.

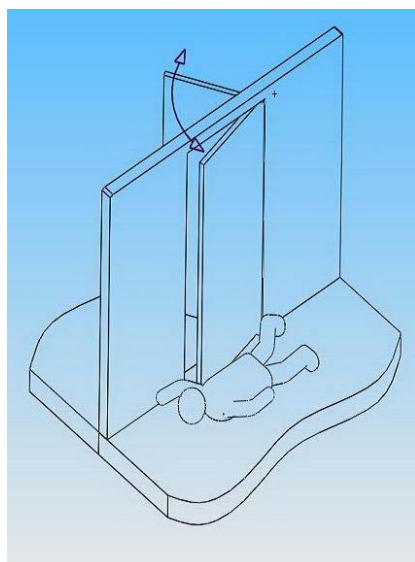
DEK620782	stainless steel pivot set	sat. stainless steel
Rating:	medium duty	
Stainless steel grade:	SUS 304.	
Bearing system:	needle bearings	
Door Weight:	1 set	80Kg max
Finish:	brushed stainless steel	
Packaging:	1 set	
Guarantee period:	25 years*	

Supplied complete with fixing screws.

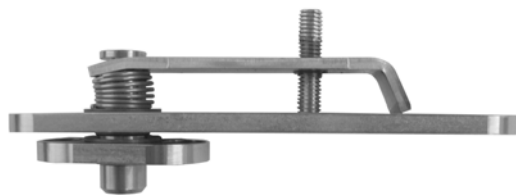
For dimensions & installation instructions see page C-1005

DEK620482 adaptor plate for upgrading to 120Kg model - see page C-1004

\* subject to general wear and tear.



CI/SfB			
31	49		
September 2007			



### **D&E 'KWS' stainless steel pivot hinge - 120Kg**

The D&E 'KWS' pivot set is manufactured from stainless steel and incorporates a needle bearing system (Pat. Pending) that offers ultra smooth operation. Designed for use in hospitals, nursing homes or wherever the ill or infirm run the risk of falling over and blocking an inward opening toilet or bathroom door.



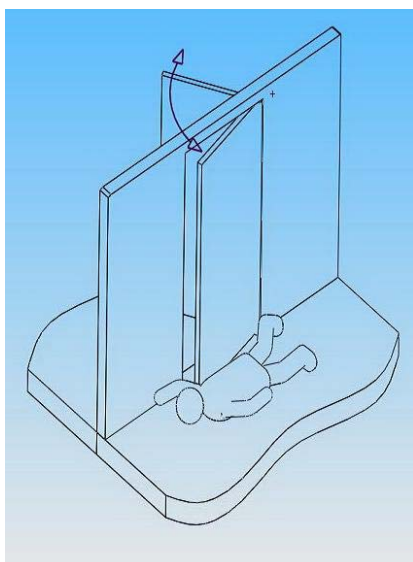
The specially designed pivot set allows the door to swing in either direction. When installed with the DEK625082 or DEK625182 emergency releases, privacy can be maintained whilst allowing entry in an emergency situation.

DEK620882	stainless steel pivot set	sat. stainless steel
Rating:	heavy duty	
Stainless steel grade:	SUS 304.	
Bearing system:	needle bearings	
Door Weights:	1 set	120Kg max
Finish:	brushed stainless steel	
Packaging:	1 set	
Guarantee period:	25 years*	

Supplied complete with fixing screws.

For dimensions & installation instructions see page C-1006

\* subject to general wear and tear.



CI/SfB			
31	49		
September 2007			

**D&E 'KWS' emergency release with hold back function**



DEK625082 emergency release with hold back sat. stainless steel

All metal parts manufactured from stainless steel

Stainless steel grade: SUS 304.

Guarantee period: 25 years\*

Supplied complete with fixing screws.

\* subject to general wear and tear.

**D&E 'KWS' emergency release**



DEK625182 emergency release sat. stainless steel

All metal parts manufactured from stainless steel

Stainless steel grade: SUS 304.

Guarantee period: 25 years\*

Supplied complete with fixing screws.

\* subject to general wear and tear.



CI/SfB			
31	49		
September 2007			



***D&E 'KWS' replacement needle bearing system***

DEK620382

needle bearing

natural finish

Replacement stainless steel needle bearing system to suit DEK620782 & DEK620882 'KWS' pivot hinges



***D&E 'KWS' floor mounted round bottom pivot base***

DEK620482

floor pivot base

sat. stainless steel

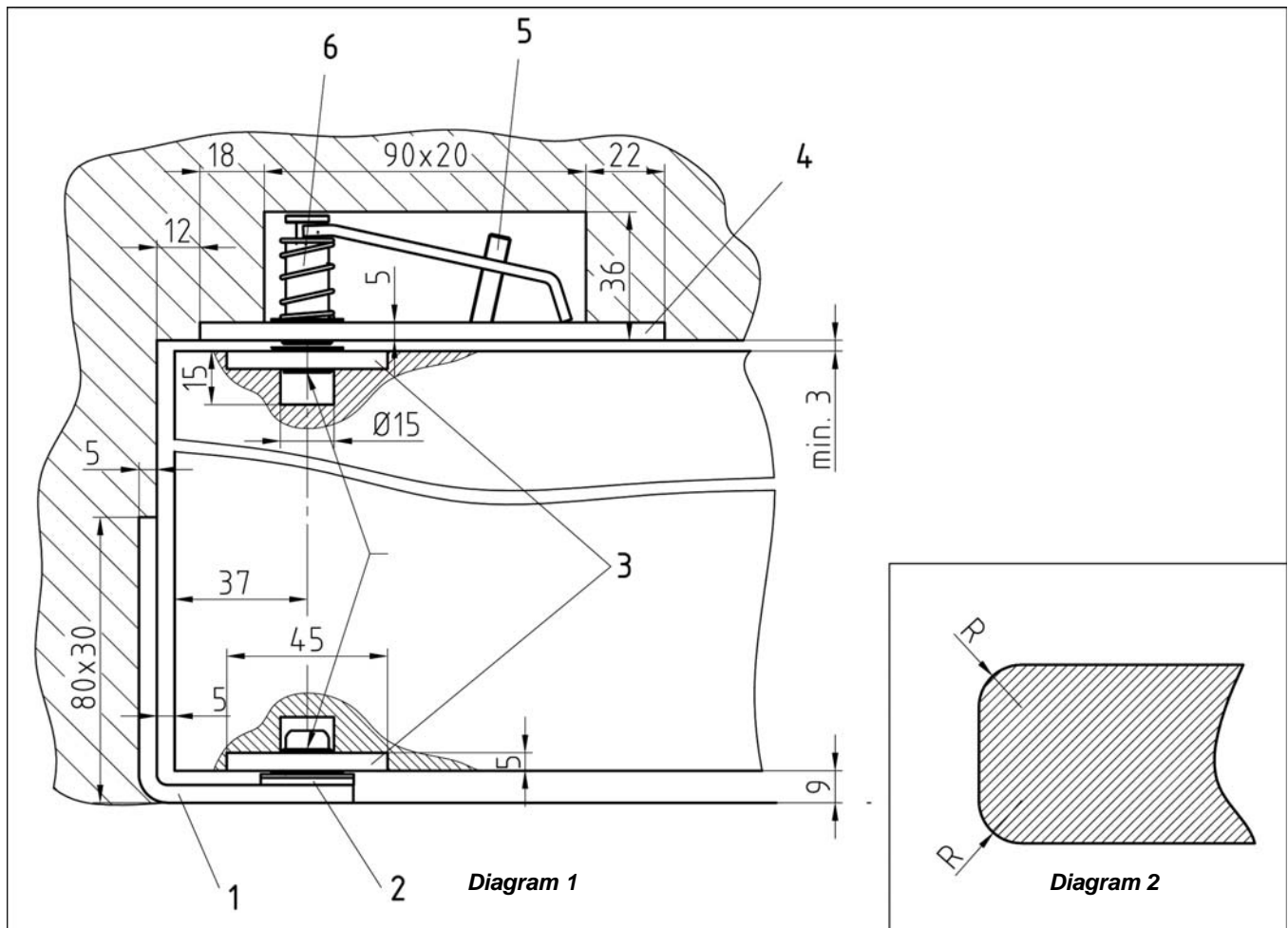
This changes the KWS 80Kg pivot set into the KWS 120Kg heavy pivot set.

Allows easy stock management and removes the need to stock two different models of pivot set - hence reducing stock levels.

Supplied complete with needle bearings and fixing screws

CI/SfB			
31	49		
September 2007			

## DEK620782 80Kg model



Door height = (internal frame height mm - 12 mm)  
 Min / Max door thickness - 25mm / 75mm  
 All measurements / dimensions in mm

R10-12 = door thickness 44  
 R12-15 = door thickness 54

### Installation:

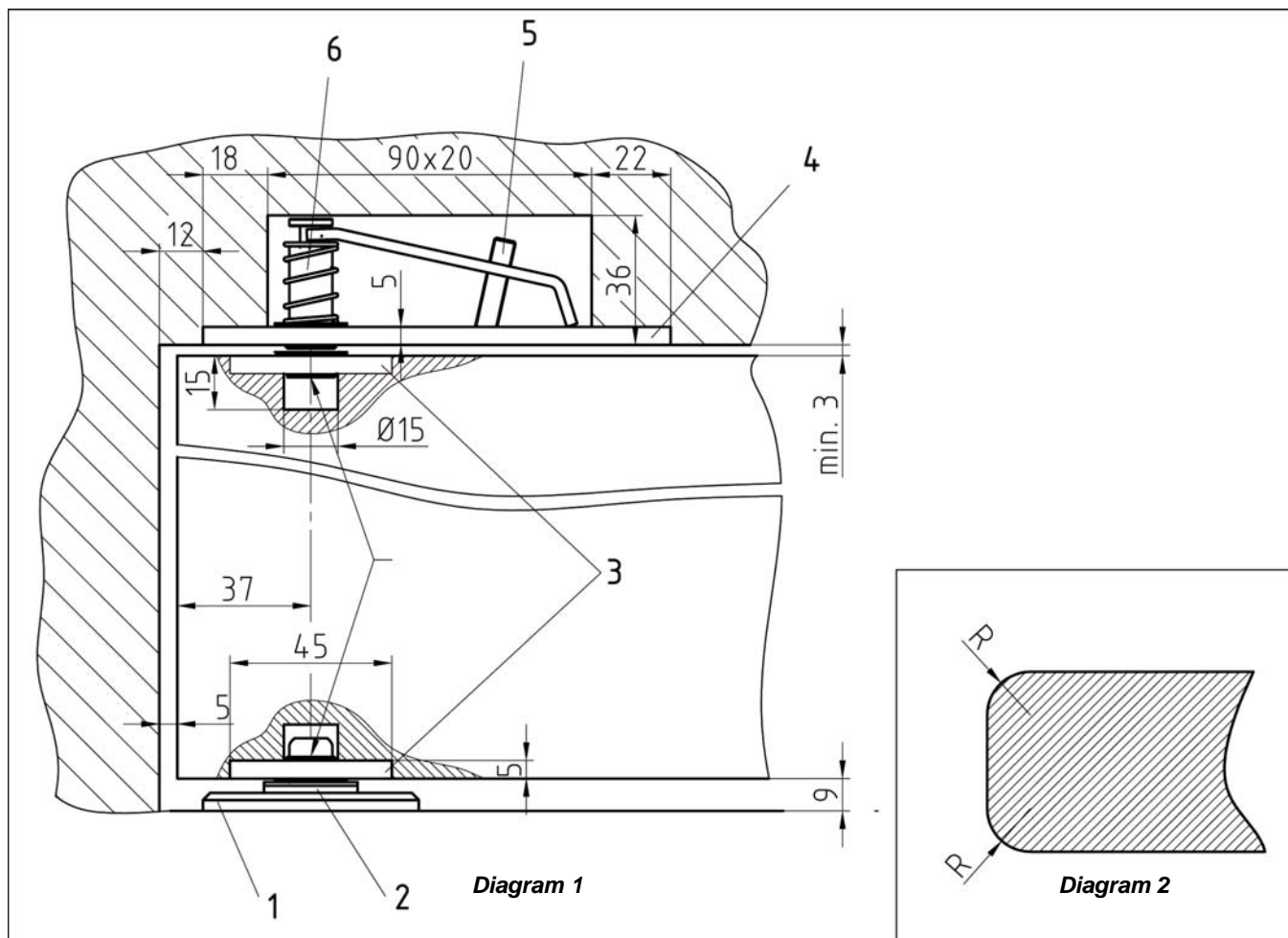
Radius the hinge edge of the door with R... corners – see diagram 2.  
 Mortise the top and bottom edges of the door for plate #3 (45 x 25 x 5mm).  
 Mark the centre of the bush / pivot hole and drill a 15mm Ø x 15mm deep hole.  
**NOTE:** the centres of the bushes / pivot holes must be vertically in alignment.

Mortise the door frame for angle bracket #1 (80 x 30 x 5mm) and top pivot #4 (130 x 25 x 5mm / 90 x 20 x 36mm) then screw into position.  
**NOTE:** the centres of the pivots must be vertically in alignment.

Locate the needle bearings and covering washer #2 over the bottom pivot.  
 Locate the door on the lower pivot and align the top pivot with the centre of the bush on the top of the door.  
 Using the hex key provided, turn the upper screw #5, driving the upper pivot #6 approximately 15mm into the upper bush.  
**NOTE:** Do not over tighten the screw #5

CI/SfB			
31	49		
September 2007			

## DEK620882 120Kg model



Door height = (internal frame height mm - 12 mm)  
Min / Max door thickness - 25mm / 75mm  
All measurements / dimensions in mm

R10-12 = door thickness 44  
R12-15 = door thickness 54

### Installation:

Radius the hinge edge of the door with R... corners – see diagram 2.  
Mortise the top and bottom edges of the door for plate #3 (45 x 25 x 5mm).  
Mark the centre of the bush / pivot hole and drill a 15mm Ø x 15mm deep hole.  
**NOTE:** the centres of the bushes / pivot holes must be vertically in alignment.

Mortise the door frame for angle bracket #1 (80 x 30 x 5mm) and top pivot #4 (130 x 25 x 5mm / 90 x 20 x 36mm) then screw into position.  
**NOTE:** the centres of the pivots must be vertically in alignment.

Locate the needle bearings and covering washer #2 over the bottom pivot.  
Locate the door on the lower pivot and align the top pivot with the centre of the bush on the top of the door.  
Using the hex key provided, turn the upper screw #5, driving the upper pivot #6 approximately 15mm into the upper bush.  
**NOTE:** Do not over tighten the screw #5

CI/SfB			
31	49		
September 2007			



## D&E BSW project hinge mounting plates - 3D adjustment

D&E BSW project hinge mounting plate designed for use on steel frames. With 3 dimensional adjustment, this makes for easy installation in the trickiest of environments.

Suitable for use with the 100mm & 120mm high BSW project hinges

DEVZK060/100-120GV      3D adjustable mounting plate      zinc plated

Max door weight:      subject to hinge type



D&E BSW project hinge mounting plate designed for use on steel frames. With 3 dimensional adjustment, this makes for easy installation in the trickiest of environments.

Suitable for use with the 160mm high BSW project hinges

DEVZK060/160GV      3D adjustable mounting plate      zinc plated

Max door weight:      subject to hinge type

A comprehensive range of mounting brackets & project hinges is available -  
please contact the sales team for a copy of the  
BSW Project Hinge catalogue



CI/SfB			
31	49		
September 2007			



D&E BSW project hinge DE060-3/100/SSS is designed for use with mounting plate (see page C-1007). Once installed on the mounting plate, the 3D adjustment allows easy installation in the trickiest of environments.

The other factor of these hinges is that manufacture of the door and frame set can be carried out in separate locations and then married up on site with the minimum of effort.

Designed for use with the DEVZK060/100-120GV - see page C-1007

DE060-3/100/SSS	project hinge for timber door	sat. stainless steel
DE060-3/100/PSS	project hinge for timber door	pol. stainless steel
DE060-3/100/GV	project hinge for timber door	zinc plated
DE060-3/100/RAL	project hinge for timber door	RAL colour*
DE060-3/100/B	project hinge for timber door	brass plated

CE classification:

4	7	6	1	1	4	0	13
---	---	---	---	---	---	---	----

Max door weight:

130Kg

Dimensions:

high	100mm
SS thickness	3mm
knuckle diameter	20mm

SS grade:

SUS 304

Pin:

removable pin

Supplied non-handed

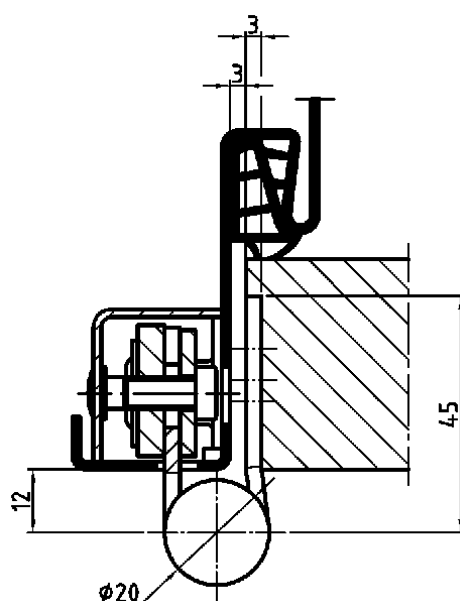
Packaging:

1 / 100 pcs

Radius corners

Supplied complete with stainless steel fixing screws

\* finishes may be subject to quantity





CI/SfB			
31	49		
September 2007			



D&E BSW project hinge DE060-3/120 & DE060-3/120 are designed for use with mounting plate (see page C-1007). Once installed on the mounting plate, the 3D adjustment allows easy installation in the trickiest of environments.

The other factor of these hinges is that manufacture of the door and frame set can be carried out in separate locations and then married up on site with the minimum of effort.

Designed for use with the DEVZK060/100-120GV - see page C-1007

DE060-3/120/SSS	project hinge for timber door	sat. stainless steel
DE060-3/120/PSS	project hinge for timber door	pol. stainless steel
DE060-3/120/GV	project hinge for timber door	zinc plated
DE060-3/120/RAL	project hinge for timber door	RAL colour*
DE060-3/120/B	project hinge for timber door	brass plated

CE classification:

4	7	6	1	1	4	0	13
---	---	---	---	---	---	---	----

Max door weight:

160Kg

Dimensions:

high	120mm
SS thickness	3mm
knuckle diameter	20mm

SS grade:

SUS 304

Pin:

removable pin

Supplied non-handed

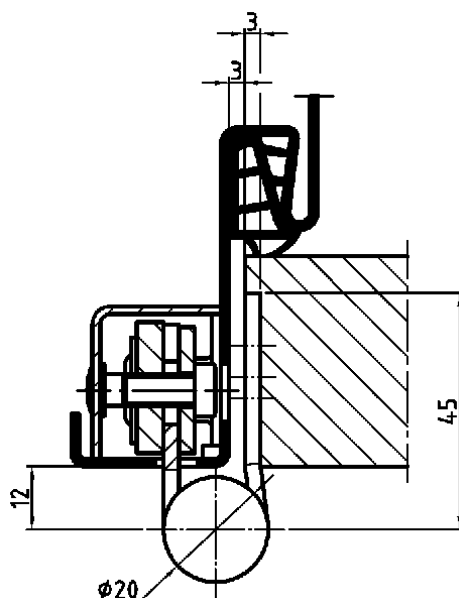
Packaging:

1 / 100 pcs

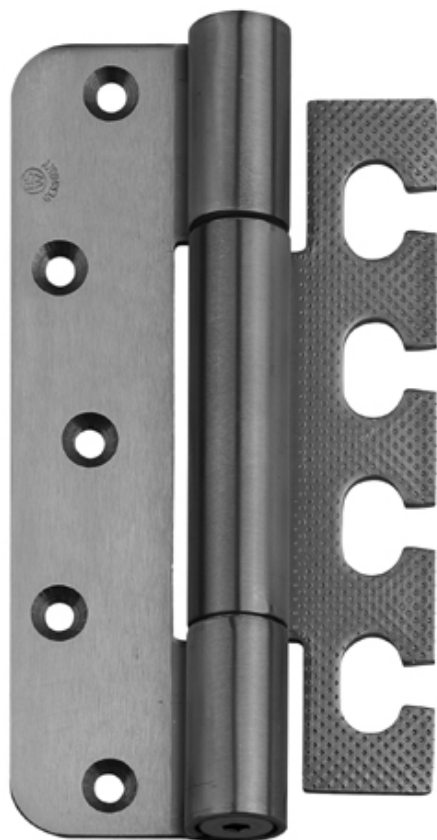
Radius corners

Supplied complete with stainless steel fixing screws

\* finishes may be subject to quantity



CI/SfB			
31	49		
September 2007			



D&E BSW project hinge DE060-3/160/SSS are designed for use with mounting plate (see page C-1007). Once installed on the mounting plate, the 3D adjustment allows easy installation in the trickiest of environments.

The other factor of these hinges is that manufacture of the door and frame set can be carried out in separate locations and then married up on site with the minimum of effort.

Designed for use with the DEVZK060/160GV - see page C-1007

DE060-3/160/SSS	project hinge for timber door	sat. stainless steel
DE060-3/160/PSS	project hinge for timber door	pol. stainless steel
DE060-3/160/GV	project hinge for timber door	zinc plated
DE060-3/160/RAL	project hinge for timber door	RAL colour*
DE060-3/160/B	project hinge for timber door	brass plated

CE classification:	4	7	7	1	1	4	0	14
--------------------	---	---	---	---	---	---	---	----

Max door weight: 260Kg

Dimensions:	high	160mm
	SS thickness	3mm
	knuckle diameter	20mm

SS grade: SUS 304

Pin: removable pin

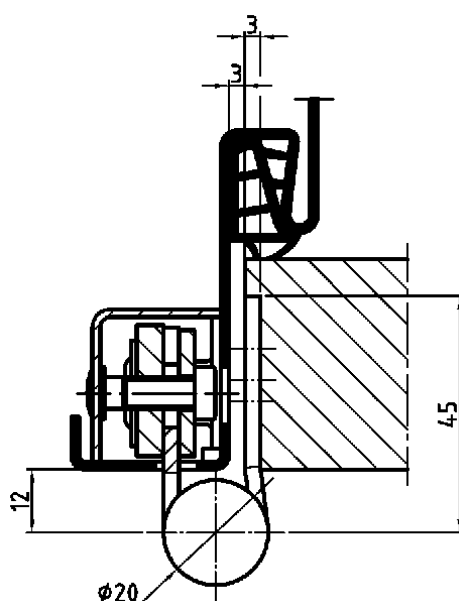
Supplied non-handed

Packaging: 1 / 100 pcs

Radius corners

Supplied complete with stainless steel fixing screws

\* finishes may be subject to quantity



**D&E Auto-hinge 1000 series.**

The 1000 series is a door closer built into a pair of hinges. Comprising of 1 spring hinge and 1 damper hinge and offers a fully adjustable, controlled closing action.

**Suitable for use on internal doors up to 35Kg.**

DE1111/35/L	auto-hinge - LH	SAA
DE1111/35/R	auto-hinge - RH	SAA

DE1111/35/SL	auto-hinge with H/O - LH	SAA
DE1111/35/SR	auto-hinge with H/O - RH	SAA

DE1110/L	blank hinge - non load bearing - LH	SAA
DE1110/R	blank hinge - non load bearing - RH	SAA

Hold open angle: 85° (*hold open model only*)

Opening angle: 180°

Door weight: 1 pr 35Kg

Packaging: 1 / 10 prs

Supplied handed (see page C-1016)

Supplied complete with fixing screws

See page C-1015 & C-1016 for all technical information including model specification for timber / metal doors in timber / metal frames etc...

**D&E Auto-hinge 100 series.**

The 100 series is a door closer built into a pair of hinges. Comprising of 1 spring hinge and 1 damper hinge and offers a fully adjustable, controlled closing action.

**Suitable for use on internal doors up to 40Kg.**

DE112/40/L	auto-hinge - LH	silver
DE112/40/R	auto-hinge - RH	silver

DE112/40/SL	auto-hinge with H/O - LH	silver
DE112/40/SR	auto-hinge with H/O - RH	silver

DE110/L	blank hinge - non load bearing - LH	silver
DE110/R	blank hinge - non load bearing - RH	silver

Opening angle: 180°

Hold open angle: 85° & 150° (*hold open model only*)

Door weight: 1 pr 40Kg

Packaging: 1 / 10 prs

Supplied handed (see page C-1016)

Supplied complete with fixing screws

See page C-1015 & C-1016 for all technical information including model specification for timber / metal doors in timber / metal frames etc...

**D&E Auto-hinge 100 series.**

The 100 series is a door closer built into a pair of hinges. Comprising of 1 spring hinge and 1 damper hinge and offers a fully adjustable, controlled closing action.

**Suitable for use on internal doors up to 60Kg.**

DE113/60/L	auto-hinge - LH	silver
DE113/60/R	auto-hinge - RH	silver

DE113/60/SL	auto-hinge with H/O - LH	silver
DE113/60/SR	auto-hinge with H/O - RH	silver

DE110/L	blank hinge - non load bearing - LH	silver
DE110/R	blank hinge - non load bearing - RH	silver

Opening angle: 180°

Hold open angle: 85° & 150° (*hold open model only*)

Door weights: 1 pr 60Kg

Packaging: 1 / 10 prs

Supplied handed (see page C-1016)

Supplied complete with fixing screws

See page C-1015 & C-1016 for all technical information including model specification for timber / metal doors in timber / metal frames etc...

**D&E Auto-hinge 100 tri-set series.**

The 113 series tri-set is a door closer built into a set of hinges. The tri-set comprises of 2 spring hinges and 1 damper hinge and offers a fully adjustable, controlled closing action.

**Suitable for use on internal doors up to 80Kg.**

DE113/80/L	tri-set auto-hinge - LH	silver
DE113/80/R	tri-set auto-hinge - RH	silver

DE113/80/SL	tri-set auto-hinge with H/O - LH	silver
DE113/80/SR	tri-set auto-hinge with H/O - RH	silver

DE110/L	blank hinge - non load bearing - LH	silver
DE110/R	blank hinge - non load bearing - RH	silver

Opening angle: 180°

Hold open angle: 85° & 150° (*hold open model only*)

Door weights: 1 set 80Kg

Packaging: 1 / 10 sets

Supplied handed (see page C-1016)

Supplied complete with fixing screws

See page C-1015 & C-1016 for all technical information including model specification for timber / metal doors in timber / metal frames etc...





### D&E Auto-hinge 100 PC series - weather resistant.

The D&E 113PC series is a door closer built into a pair of hinges. Comprising of 1 spring hinge and 1 damper hinge and offers a fully adjustable, controlled closing action which is enhanced by a thermal compensator.

#### Suitable for use on external doors up to 60Kg.

DE113PC/60/L	PC auto-hinge - LH	silver
DE113PC/60/R	PC auto-hinge - RH	silver

DE113PC/60/SL	PC auto-hinge with H/O - LH	silver
DE113PC/60/SR	PC auto-hinge with H/O - RH	silver

DE110PC/L	PC blank hinge - non load bearing - LH	silver
DE110PC/R	PC blank hinge - non load bearing - RH	silver

Opening angle: 180°

Hold open angle: 85° & 150°

Door weights: 1 pr 60Kg

Packaging: 1 / 10 prs

Supplied handed (see page C-1016)

Supplied complete with fixing screws

See page C-1015 & C-1016 for all technical information including model specification for timber / metal doors in timber / metal frames etc...



### D&E Auto-hinge 113 AEM.

The D&E 113AEM is an electro-magnetic hold open device for use with the 112 / 113 Auto-hinge. It can be wired into a fire alarm system.

DE113AEM/L	113 AEM auto-hinge - LH	silver
DE113AEM/R	113 AEM auto-hinge - RH	silver

Opening angle: 180°

Hold open angle: adjustable 30° to 170°

Power: 24 / 48vdc (please specify)

Door weights: non load bearing

Packaging: each

Supplied handed (see page C-1016)

Supplied complete with fixing screws

**D&E Auto-hinge NK153 series.**

The D&E NK153 series is a door closer built into either a pair or set of hinges. There are two door weight configurations. The 60Kg models comprise of 1 spring hinge and 1 damper hinge. The 80Kg models comprise of 2 spring hinges and 1 damper hinge. Both offer a fully adjustable, controlled closing action.

**Suitable for use on frameless glass doors up to 60Kg.**

DENK153/60/L	NK153 auto-hinge - LH	silver
DENK153/60/R	NK153 auto-hinge - RH	silver

DENK153/60/SL	NK153 auto-hinge with HO - LH	silver
DENK153/60/SR	NK153 auto-hinge with HO - RH	silver

DENK150/L	blank hinge - non load bearing - LH	silver
DENK150/R	blank hinge - non load bearing - RH	silver

Opening angle: 180°

Hold open angle: 85° & 150°

Door weights: 1 pair 60Kg

Glass thickness: 8 to 12mm

Door dimensions: 2100 x 900mm

Packaging: 1 / 10 prs

Supplied handed (see page C-1016)

Supplied complete with fixing screws.

**Suitable for use on frameless glass doors up to 80Kg.**

DENK153/80/L	NK153 tri-set auto-hinge - LH	silver
DENK153/80/R	NK153 tri-set auto-hinge - RH	silver

DENK153/80/SL	NK153 tri-set auto-hinge with HO - LH	silver
DENK153/80/SR	NK153 tri-set auto-hinge with HO - RH	silver

DENK150/L	blank hinge - non load bearing - LH	silver
DENK150/R	blank hinge - non load bearing - RH	silver

Opening angle: 180°

Hold open angle: 85° & 150°

Door weights: 1 set 80Kg

Glass thickness: 8 to 12mm

Door dimensions: 2200 x 1000mm

Packaging: 1 / 10 prs

Supplied handed (see page C-1016)

Supplied complete with fixing screws.

Part No.		Hand	Max Door Weight	Hold Open Position	Max Opening Angle	Max Door Dimensions
Without hold open	With hold open					

## 1000 series

To suit a Timber door in a Timber frame						
1111R	1111SR	Right	35Kg	85°	180°	W: 850mm H: 2000mm T: min 30mm
1111L	1111SL	Left				
1110R	—	Right	—	—		
1110L	—	Left	—	—		

## 100 series

To suit a Timber door in a Timber frame						
112R	112SR	Right	40Kg	85° & 150°	180°	W: 900mm H: 2100mm T: min 30mm
112L	112SL	Left				
113R	113SR	Right	60Kg			
113L	113SL	Left				
113R Tri-Set	113SR Tri-Set	Right	80Kg			
113L Tri-Set	113SL Tri-Set	Left				
110R	—	Right	—	—		
110L	—	Left				

To suit a Timber door in a Steel frame						
122R-T	122SR -T	Right	40Kg	85° & 150°	180°	W: 900mm H: 2100mm T: min 30mm
122L-T	122SL-T	Left				
120R-T	—	Right	—	—		
120L-T	—	Left				

To suit a Steel door in a Steel frame						
143R-T	143SR-T	Right	60Kg	85° & 150°	180°	W: 900mm H: 2100mm T: min 30mm
143L-T	143SL-T	Left				
140R-T	—	Right	—	—		
140L-T	—	Left				

To suit a Steel door in a Steel frame						
244R-T	244SR-T	Right	120Kg	85° & 150°	180°	W: 1200mm H: 2100mm T: min 40mm
244L-T	244SL-T	Left				
240R-T	—	Right	—	—		
120L-T	—	Left				



Part No.		Hand	Max Door Weight	Hold Open Position	Max Opening Angle	Max Door Dimensions
Without hold open	With hold open					

## **100 PC series**

### ***To suit timber, aluminium & lightweight steel doors***

113R-PC	113SR-PC	Right	60Kg	85° & 150°	180°	W: 900mm H: 2100mm T: min 30mm
113L-PC	113SL-PC	Left				
110R	—	Right	—	—		
110L	—	Left				

### ***To suit aluminium, lightweight steel & partition doors***

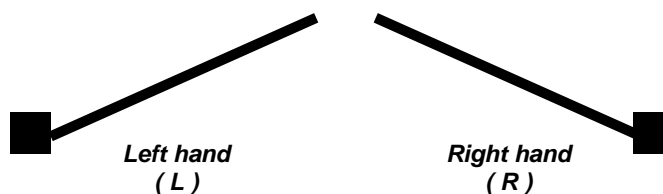
133R-PC	133SR-PC	Right	60Kg	85° & 180°	180°	W: 900mm H: 2100mm T: min 30mm
133L-PC	133SL-PC	Left				
130R-PC	—	Right	—	—		
130L-PC	—	Left				

### ***To suit a Steel door in a Steel frame***

143R-T-PC	143SR-T-PC	Right	60Kg	85° & 150°	180°	W: 900mm H: 2100mm T: min 30mm
143L-T-PC	143SL-T-PC	Left				
140R-T-PC	—	Right	—	—		
140L-T-PC	—	Left				

### ***To suit a Steel door in a Steel frame***

244R-T-PC	244SR -T-PC	Right	120Kg	85° & 150°	180°	W: 1200mm H: 2100mm T: min 40mm
244L-T-PC	244SL-T-PC	Left				
240R-T-PC	—	Right	—	—		
240L-T-PC	—	Left				





## D&E Auto-hinge - Centre Hang type

The D&E Auto-Hinge centre hang type is a concealed single action pivot door closer. Suitable for use on doors ranging from 40Kg up to 510Kg, it offers a controlled closing action.

DEA8K/L                      centre hang auto-hinge - LH - 40Kg  
DEA8K/R                      centre hang auto-hinge - RH - 40Kg

DEA8/L                        centre hang auto-hinge - LH - 50Kg  
DEA8/R                        centre hang auto-hinge - RH - 50Kg

DEA10/L                      centre hang auto-hinge - LH - 85Kg  
DEA10/R                      centre hang auto-hinge - RH - 85Kg

DEA12/L                      centre hang auto-hinge - LH - 100Kg  
DEA12/R                      centre hang auto-hinge - RH - 100Kg

DEA14/L                      centre hang auto-hinge - LH - 130Kg  
DEA14/R                      centre hang auto-hinge - RH - 130Kg

DEA16/L                      centre hang auto-hinge - LH - 160Kg  
DEA16/R                      centre hang auto-hinge - RH - 160Kg

DEA18/L                      centre hang auto-hinge - LH - 200Kg  
DEA18/R                      centre hang auto-hinge - RH - 200Kg

DEA22/L                      centre hang auto-hinge - LH - 240Kg  
DEA22/R                      centre hang auto-hinge - RH - 240Kg

DEA26/L                      centre hang auto-hinge - LH - 310Kg  
DEA26/R                      centre hang auto-hinge - RH - 310Kg

DEA30/L                      centre hang auto-hinge - LH - 410Kg  
DEA30/R                      centre hang auto-hinge - RH - 410Kg

DEA30H/L                    centre hang auto-hinge - LH - 510Kg  
DEA30H/R                    centre hang auto-hinge - RH - 510Kg

Opening angle:            180°

Door weights:            all door weights shown above are subject to certain criteria - see pages C-1018 & C-1019 for further information.

Finish:                      stove enamelled

Packaging:                each

Supplied handed (see page C-1018)

Supplied complete with fixing screws

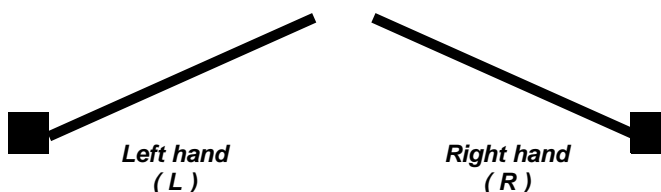
# D&E Auto-hinge - Centre Hang Type

CI/SfB			
31	49		
September 2007			

model no.	door dimensions (mm)			max door weight	standard closing force	max opening angle
	width	height	thickness			
A-8K	800 (max)	1850 (max)	36 (min)	40	6.9 N-m	180°
A-8		2000		50	8.9 N-m	
A-10	1000	2100	40	85	10.8 N-m	
A-12	1200			100	15.7 N-m	
A-14	1400			130	19.7 N-m	
A-16	1600	2400	45	160	24.6 N-m	
A-18	1800		50	200	41.2 N-m	
A-22	2200			240	49.1 N-m	
A-26	2600	2600	55	310	60.9 N-m	
A-30	3000			410	68.7 N-m	
A-30H				510		

1. Select an appropriate model according to the dimensions (height x width) of the door.  
(See chart on page C-1019)
  2. Ensure that the door weight is within the guidelines set out in the table below.
- N.B. The chart on page C-1019 is based on a wind velocity of 3m/sec. If being used in conjunction with a smoke ventilation system or should the wind conditions be any greater then please contact the sales office.

<i>model</i>	<i>weight / 1m<sup>2</sup></i>	<i>type of door</i>
A-8K	27Kg/m <sup>2</sup> max	steel door (only for wicket door)
A-8	31Kg/m <sup>2</sup> max	steel door
A-10, A-12	39Kg/m <sup>2</sup> max	
A-14, A-16	41Kg/m <sup>2</sup> max	
A-18, A-22, A-26	45Kg/m <sup>2</sup> max	
A-30	52Kg/m <sup>2</sup> max	
A-30H	65Kg/m <sup>2</sup> max	



Sales: 01733 896123



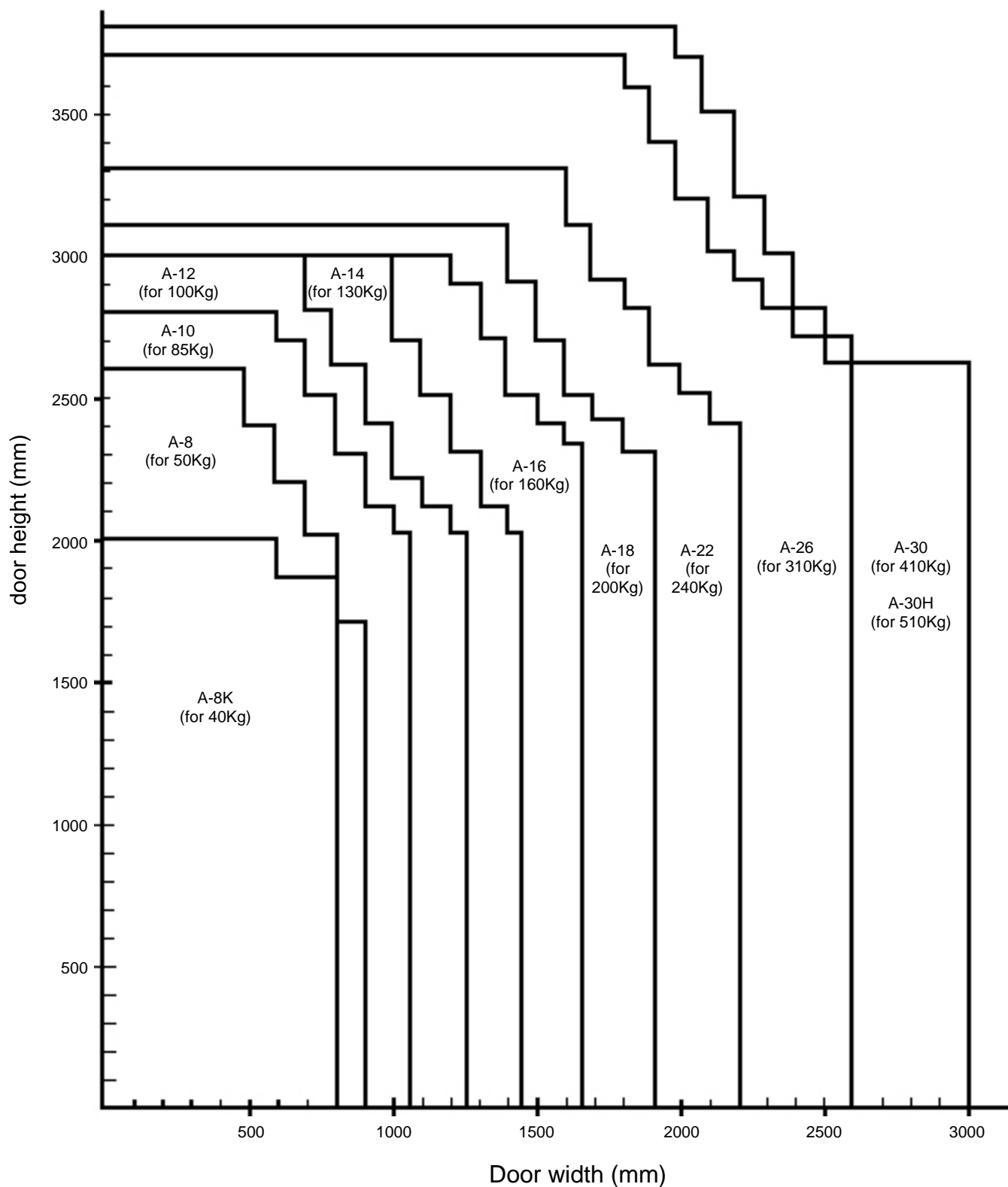
C-1018

Fax: 01733 894466

E&OE

# D&E Auto-hinge - Centre Hang Type

CI/SfB			
31	49		
September 2007			



Sales: 01733 896123

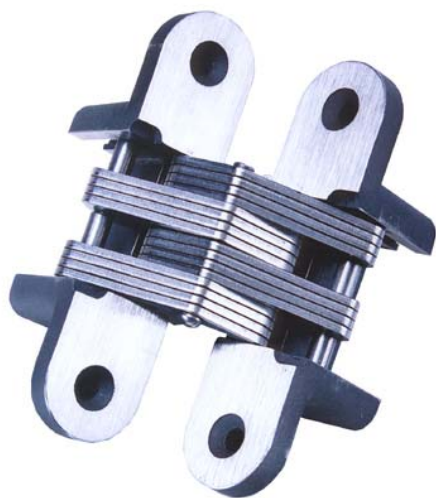


C-1019

Fax: 01733 894466

E&OE

CI/SfB			
31	49		
September 2007			



## ***D&E Soss invisible hinge***

D&E Soss invisible hinges are manufactured to exacting standards and high tolerances. The hinges are intelligently engineered to provide a state of the art product with 180° opening angle, which offers a fully concealed hinge when the door is closed.

### ***Fire rated option.***

DE218F - 30 minute fire tested version successfully tested as part of a door set by Warrington Fire Research Station in accordance with BS476: Pt22: 1987 Section 6.

218SS - 60 minute fire tested version - successfully tested at the Chiltern Fire Research Station in accordance with BS476: Pt22: 1987.

### ***Crimestall option***

DE218C - Crimestall hinge is a DE218 with integral dog bolts. Suitable for any application where security is an issue.



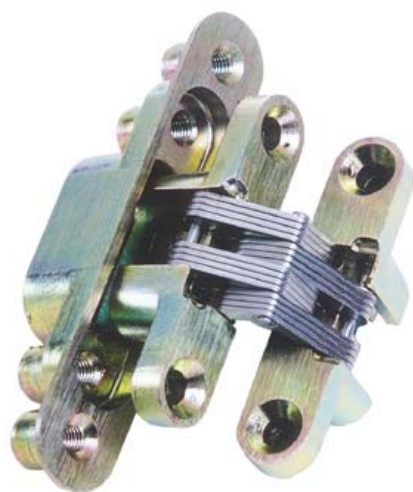
## ***D&E Soss invisible door closer hinge***

The D&E Soss invisible door closer hinge is a completely concealed door closer. It is ideally suited to environments where an overhead closer can not be installed.

For use with the DE218 hinge only.

Suitable for use on doors up to 25Kgs in weight.

Fire pack available for use on 30 minute fire doors is available.



## D&E Soss invisible hinge - Metal enclosures

Consisting of the DE204SSL & the DEBOOT this is ideal for metal enclosures housing electrical or electronic equipment for street lighting, cable tv, superhighway, mobile communications, cctv and data network equipment and even internet kiosks.

Installation of the DE204SSL (*DE204 with stainless steel links*) is fast and accurate with the Soss Ingress Protection Supports. These special supports aid internal and external cabinets to achieve the IP55 & IP65 rating against ingress of dust, dirt & moisture.



DE314

DE205

DE314B	DE314SNP	DE314ZP	DE205B	DE205SNP	DE205ZP	DE204B/BT	DE204SNP/BT	DE204ZP/BT
soss hinge - mild steel links	soss hinge - mild steel links	soss hinge - mild steel links	soss hinge - mild steel links	soss hinge - mild steel links	soss hinge - mild steel links	soss hinge boot	soss hinge boot	soss hinge boot
brass plated	sat. nickel plated	zinc plated	brass plated	sat. nickel plated	zinc plated	brass plated	brass plated	zinc plated

## D&E soss hinges

D&E soss hinges are suitable for use on standard doors, concealed doors, top opening doors, room dividing doors, flip top tables & sales counters to name but a few. The design possibilities are limitless.



DE101

DE103

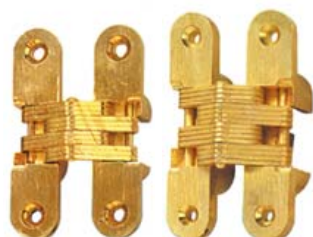
DE303



DE203

DE204

DE101B	DE101SNP	DE103B	DE103SNP	DE303B	DE303SNP	DE203B	DE203SNP	DE203SS	DE204B	DE204SNP	DE204A/B	DE204A/SNP	DE204SSL/B	DE204SSL/SNP	DE204SS
soss hinge - mild steel links	soss hinge - mild steel links	soss hinge - mild steel links	soss hinge - mild steel links	soss hinge - mild steel links	soss hinge - mild steel links	soss hinge - mild steel links	soss hinge - mild steel links	soss hinge - 100% stainless steel	soss hinge - mild steel links	soss hinge - mild steel links	adjustable soss hinge - mild steel links	adjustable soss hinge - mild steel links	soss hinge - st. steel links	soss hinge - st. steel links	soss hinge - 100% stainless steel
brass plated	sat. nickel plated	brass plated	sat. nickel plated	brass plated	sat. nickel plated	brass plated	sat. nickel plated	sat. stainless steel	brass plated	sat. nickel plated	brass plated	sat. nickel plated	brass plated*	sat. nickel plated*	sat. stainless steel



DE208

DE212

## D&E soss hinges - cont'd

D&E soss hinges are suitable for use on standard doors, concealed doors, top opening doors, room dividing doors, flip top tables & sales counters to name but a few. The design possibilities are limitless.



DE216

DE218



DE220

DE208B	soss hinge - mild steel links	brass plated
DE208SNP	soss hinge - mild steel links	sat. nickel plated
DE208SSL/B	soss hinge - st. steel links	brass plated*
DE208SSL/SNP	soss hinge - st. steel links	sat. nickel plated*
DE208SS	soss hinge - 100% stainless steel	sat. stainless steel
DE212B	soss hinge - mild steel links	brass plated
DE212SNP	soss hinge - mild steel links	sat. nickel plated
DE212SS	soss hinge - 100% stainless steel	sat. stainless steel
DE216B	soss hinge - mild steel links	brass plated
DE216SNP	soss hinge - mild steel links	sat. nickel plated
DE216SS	soss hinge - 100% stainless steel	sat. stainless steel
DE218B	soss hinge - nylon / mild steel links	brass plated
DE218SNP	soss hinge - nylon / mild steel links	sat. nickel plated
DE218F/B	fire rated <sup>1</sup> hinge - mild steel links	brass plated
DE218F/SNP	fire rated <sup>1</sup> hinge - mild steel links	sat. nickel plated
DE218SSL/B	soss hinge - st. steel links	brass plated*
DE218SSL/SNP	soss hinge - st. steel links	sat. nickel plated*
DE218SS	fire rated <sup>2</sup> hinge - 100% stainless steel	sat. stainless steel
DE218A/B	adjustable soss hinge - mild steel links	brass plated
DE218A/SNP	adjustable soss hinge - mild steel links	sat. nickel plated
DE218C/B	crimestall soss hinge - mild steel links	brass plated
DE218C/SNP	crimestall soss hinge - mild steel links	sat. nickel plated
DE218DC/B	door closer soss hinge - mild steel links	brass plated
DE218DC/SNP	door closer soss hinge - mild steel links	sat. nickel plated
DE220B	soss hinge - mild steel links	brass plated
DE220SNP	soss hinge - mild steel links	sat. nickel plated
DE220SS	soss hinge - 100% stainless steel	sat. stainless steel

\* Hinges with stainless steel links are available to order.

<sup>1</sup> Tested by Warrington Fire Research as part of a door set in accordance with BS476 : part 22 : 1987 section 6 for use on 30 minute for doors.

<sup>2</sup> Tested by Warrington Fire Research as part of a door set in accordance with BS476 : part 22 : 1987 section 6 for use on 60 minute for doors.



CI/SfB			
31	49		
September 2007			

## Identifying the correct hinge

The stringent method of identifying the correct hinge for the task in hand is to follow these four easy steps.

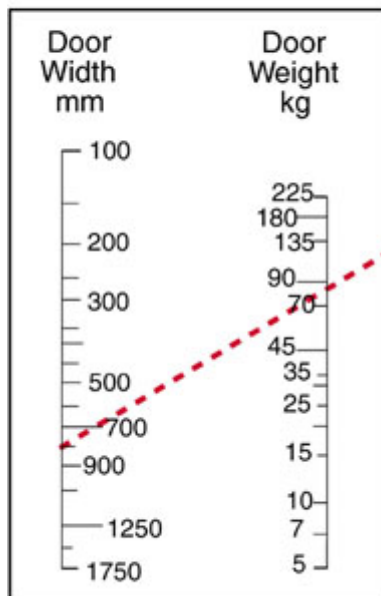
1. Determine the width, thickness and height of the door.
2. Once the above is achieved go to table 1. Locate the width and the height of your door and draw a straight line through those two points, continuing the line on to the left hand edge of table 2. An example of this has been illustrated by a dotted line for a door 800mm wide and 85Kg in weight.
3. Where the line meets the left hand edge of table 2, draw a horizontal line the full width of the table. This determines your recommended hinge.
4. If you look at the dotted line this meets a light blue box, this indicates that if your door has a minimum thickness of 41mm then you can use 4 hinges type DE218, or, if you follow the line through to the next column because your door has a minimum thickness of 48mm then you must use 3 hinges of type DE220.

Finishes available:

brassed	- B
satin nickel	- SNP
stainless steel	- SS

*(Stainless Steel only available as models 204, 212, 216, 218 & 220)*

**Table 1**



**Table 2**

