

door hardware

alpro®

*Commitment to
Excellence*



*Commitment to
Excellence*



**Europrofile
Deadlocks - P3**



**Round Mortice Cylinder
Deadlocks - P4 - 5**



**Europrofile
Deadlatches - P6**



**Round Mortice
Deadlatches - P7**



**Lever & Paddle
Handles - P8**



**Lock Accessories -
P9 - P10**



Flush Bolts - P10



Magnets - P11



**Concealed Overhead
Door Closers - P12 - P13**



**Digital Locks -
P14 - 15**



**Compact Shearlock
Magnet - P16**



**Access Control -
P17 - P18**

Features

- Range of backsets available
- Faceplate finish SAA
- Stainless steel laminated lockbolts
- Locks accept standard 17mm Europrofile cylinders and thumbturn

Functionality

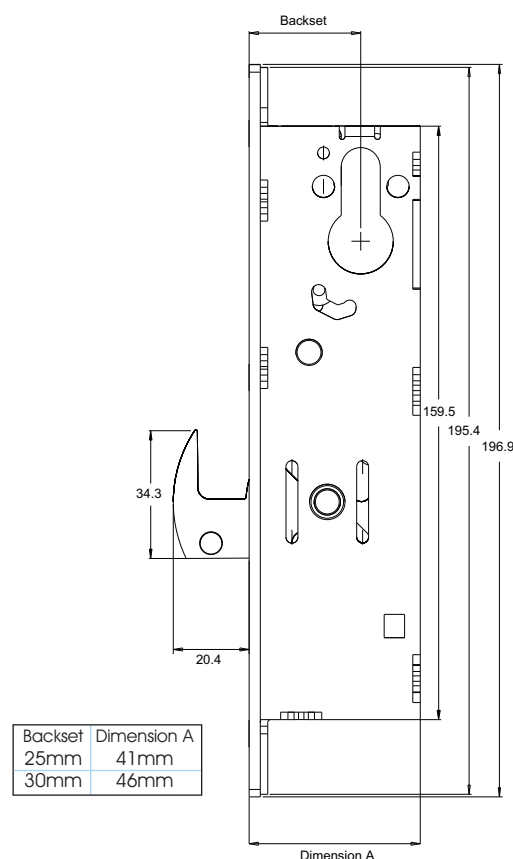
Deadlocks are available in both bar and hookbolt versions. The locks provide security deadlocking for a variety of aluminium doors including swinging and sliding applications. The hookbolt is constructed from stainless steel and is a 5 ply laminated construction, with the centre core case hardened, complete with hardened roll pin to resist hacksaw attack. All locks are designed to accept standard profile cylinders or thumbturns.

Code	Description	For use with	Finish
5222025	Narrow stile hookbolt lock to suit 17mm Europrofile cylinder - 25mm backset		N/A
5222025R	Narrow stile hookbolt lock 25mm backset RIV nut fixing		N/A
5222030	Narrow stile hookbolt lock to suit 17mm Europrofile cylinder - 30mm backset		N/A
5222030R	Narrow stile hookbolt lock 30mm backset RIV nut fixing		N/A
5222125	Narrow stile barbolt lock to suit 17mm Europrofile cylinder - 25mm backset		N/A
5222130	Narrow stile barbolt lock to suit 17mm Europrofile cylinder - 30mm backset		N/A
52FP221	Flat faceplate - bar bolt - width 25mm	221	SAA
52FP222	Flat faceplate - hook lock only - width 25mm	220	SAA
52FP225	Radius faceplate - hook lock only - width 25mm	220	SAA
52FP228	Radius faceplate with weather strip - width 25mm	220	SAA

For details of the faceplate variants available, contact the sales office for further information and product codes.

Conversion Chart

Imperial Backset	Metric Equivalent
7/8"	22.2mm
31/32"	24.6mm
1 1/8"	28.6mm
1 1/2"	38.1mm



Features

- Range of backsets available
- Locks accept standard 1⁵/₃₂" mortice key or thumbturn cylinder
- Faceplate finish SAA
- Stainless steel laminated lockbolts

Functionality

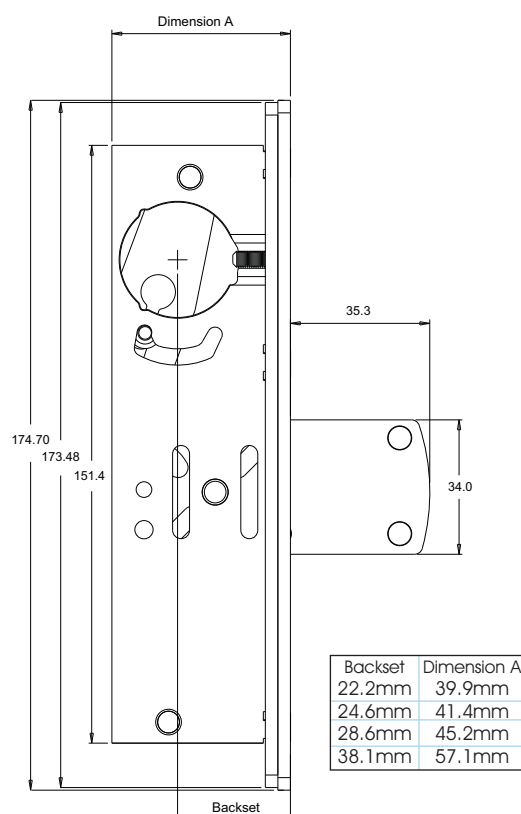
Deadlocks are available in both bar and hookbolt versions. The locks provide security deadlocking for a variety of aluminium doors including swinging and sliding applications. The hookbolt is constructed from stainless steel and is a 5 ply laminated construction, with the centre core case hardened, complete with hardened roll pin to resist hacksaw attack. All locks are designed to accept standard round mortice cylinders or thumbturns.

Code	Description	For use with	Finish
5218501	Narrow stile long throw barbolt deadlock to suit mortice cylinder 7/8" backset		N/A
5218502	Narrow stile long throw barbolt deadlock to suit mortice cylinder 31/32" backset		N/A
5218503	Narrow stile long throw barbolt deadlock to suit mortice cylinder 1 1/8" backset		N/A
5218504	Narrow stile long throw barbolt deadlock to suit mortice cylinder 1 1/2" backset		N/A
52FP1851	Flat faceplate - width 25mm	1850	SAA
52FP1852	Radius faceplate - width 25mm	1850	SAA
52FP1853	Radius faceplate with weather strip - width 25mm	1850	SAA

For details of the faceplate variants available, contact the sales office for further information and product codes.

Conversion Chart

Imperial Backset	Metric Equivalent
7/8"	22.2mm
31/32"	24.6mm
1 1/8"	28.6mm
1 1/2"	38.1mm



Features

- Range of backsets available
- Locks accept standard 1⁵/₃₂" mortice key or thumbturn cylinder
- Faceplate finish SAA
- Stainless steel laminated lockbolts

Functionality

Deadlocks are available in both bar and hookbolt versions. The locks provide security deadlocking for a variety of aluminium doors including swinging and sliding applications. The hookbolt is constructed from stainless steel and is a 5 ply laminated construction, with the centre core case hardened, complete with hardened roll pin to resist hacksaw attack. All locks are designed to accept standard round mortice cylinders or thumbturns.

Code	Description	For use with	Finish
5218201	Narrow stile short throw barbolt deadlock to suit mortice cylinder 7/8" backset		N/A
5218202	Narrow stile short throw barbolt deadlock to suit mortice cylinder 31/32" backset		N/A
5218203	Narrow stile short throw barbolt deadlock to suit mortice cylinder 1 1/8" backset		N/A
5218204	Narrow stile short throw barbolt deadlock to suit mortice cylinder 1 1/2" backset		N/A
5218205	Narrow stile hookbolt deadlock to suit mortice cylinder 7/8" backset		N/A
5218206	Narrow stile hookbolt deadlock to suit mortice cylinder 31/32" backset		N/A
5218207	Narrow stile hookbolt deadlock to suit mortice cylinder 1 1/8" backset		N/A
5218208	Narrow stile hookbolt deadlock to suit mortice cylinder 1 1/2" backset		N/A
52FP1821	Flat faceplate - width 25mm	1820	SAA
52FP1822	Radius faceplate - width 25mm	1820	SAA
52FP1823	Radius faceplate with weather strip - width 25mm	1820	SAA

For details of the faceplate variants available, contact the sales office for further information and product codes.

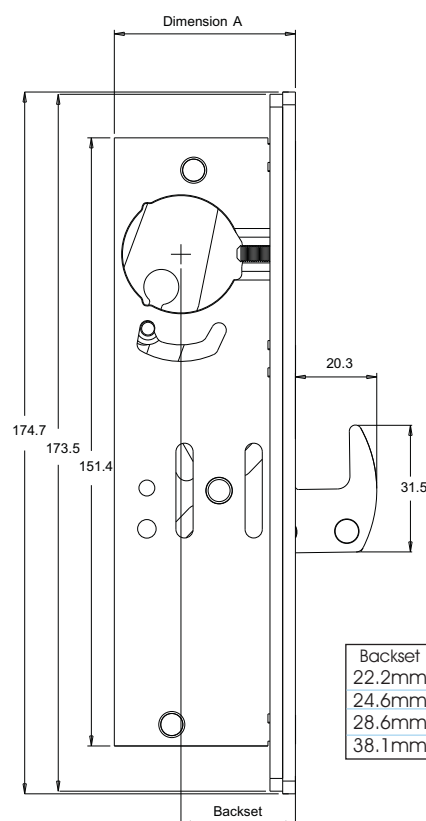
Conversion Chart

Imperial Backset	Metric Equivalent
7/8"	22.2mm
31/32"	24.6mm
1 1/8"	28.6mm
1 1/2"	38.1mm



52182 Lock Type

52FP1821 Faceplate



Backset	Dimension A
22.2mm	39.9mm
24.6mm	41.4mm
28.6mm	45.2mm
38.1mm	57.1mm

Features

- Range of backsets available
- Faceplate finish SAA
- Locks accept standard 17mm Europrofile cylinders and thumbturns

Functionality

Deadlatches offer flexible control of situations and can be used in conjunction with electric strikes to provide the added option of remote access control. Designed to operate on doors with 3mm door gaps.

Code	Description	For use with	Finish
5245701	Deadlatch to suit 17mm Europrofile cylinder 25mm backset (RH)		N/A
5245702	Deadlatch to suit 17mm Europrofile cylinder 25mm backset (LH)		N/A
5245703	Deadlatch to suit 17mm Europrofile cylinder 28mm backset (RH)		N/A
5245704	Deadlatch to suit 17mm Europrofile cylinder 28mm backset (LH)		N/A
5245705	Deadlatch to suit 17mm Europrofile cylinder 38mm backset (RH)		N/A
5245706	Deadlatch to suit 17mm Europrofile cylinder 38mm backset (LH)		N/A
52FP4511	Flat faceplate - width 25mm	4510/4570	SAA
52FP4512	Radius faceplate - width 25mm	4510/4570	SAA
52FP4513	Radius faceplate with weather strip - width 25mm	4510/4570	SAA
5245-FIX-KIT	Deadlatch fixing kit - width 25mm	4570/4510	N/A
5245ESP	Extended strike plate	4570/4510	N/A
5235	Strike plate		N/A

For details of the faceplate variants available, contact the sales office for further information and product codes.

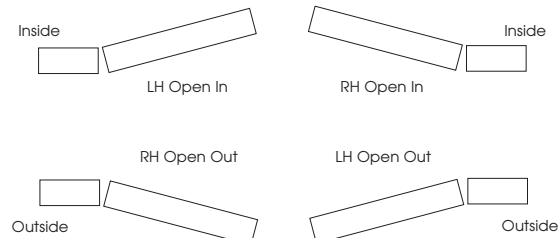
- Industry standard ANSI cut outs
- Europrofile or round mortice cylinder options
- Multiple backsets available
- Latch hold back facility
- Latches compatible for use with electric strikes

Handing of doors for locks

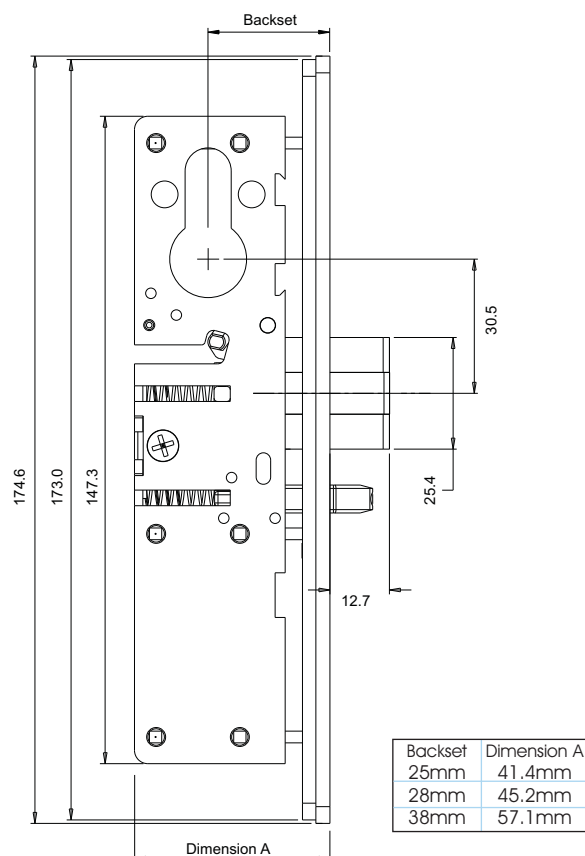
The description of swinging door operation always viewed from the outside.

LH: Door hinges on left

RH: Door hinges on right



NB - For conversion table for lock backsets see page 3



Features

- Range of backsets available
- Locks accept standard 1⁵/₃₂" mortice key or thumbturn cylinder
- Faceplate finish SAA

Functionality

Deadlatches offer flexible control of situations and can be used in conjunction with electric strikes to provide the added option of remote access control. Designed to operate on doors with 3mm door gaps, the deadlatches can also be operated with the 459 paddle handle (cam plug required).

Code	Description	For use with	Finish
5245101	Deadlatch to suit round mortice cylinder 1 ¹ / ₈ " backset (RH)		N/A
5245102	Deadlatch to suit round mortice cylinder 1 ¹ / ₈ " backset (LH)		N/A
5245103	Deadlatch to suit round mortice cylinder 3 ¹ / ₃₂ " backset (RH)		N/A
5245104	Deadlatch to suit round mortice cylinder 3 ¹ / ₃₂ " backset (LH)		N/A
52FP4511	Flat faceplate - width 25mm	4570/4510	SAA
52FP4512	Radius faceplate - width 25mm	4570/4510	SAA
52FP4513	Radius faceplate with weather strip - width 25mm	4570/4510	SAA
5245-FIX-KIT	Deadlatch fixing kit	4570/4510	N/A
5245ESP	Extended strike plate	4570/4510	N/A
5235	Strike plate		N/A
HP4560-EXT-RH	Extended cam - RH		N/A
HP4560-EXT-LH	Extended cam - LH		N/A

For details of the faceplate variants available, contact the sales office for further information and product codes.

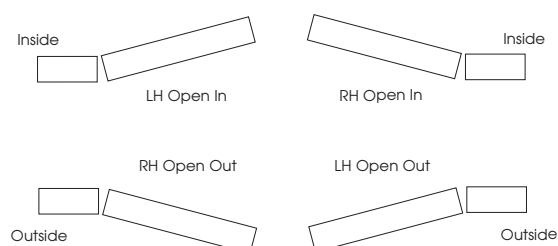
- Industry standard ANSI cut outs
- Europrofile or round mortice cylinder options
- Multiple backsets available
- Latch hold back facility
- Latches compatible for use with electric strikes

Handing of doors for locks

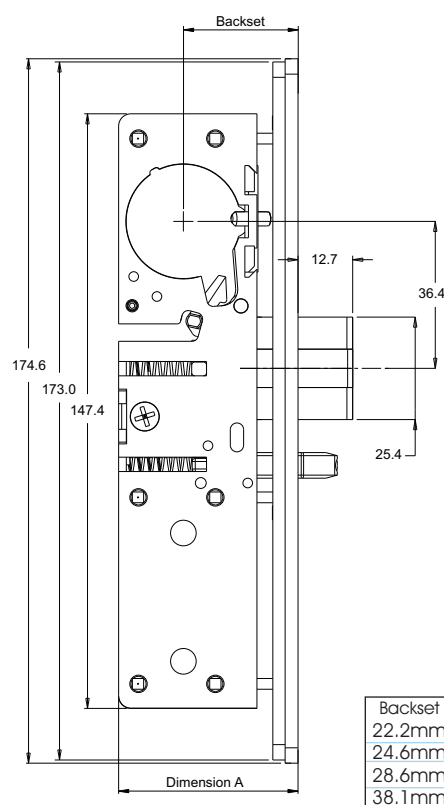
The description of swinging door operation always viewed from the outside.

LH: Door hinges on left

RH: Door hinges on right



NB - For conversion table for lock backsets see page 3



Backset	Dimension A
22.2mm	39.9mm
24.6mm	41.4mm
28.6mm	45.2mm
38.1mm	57.1mm

Features

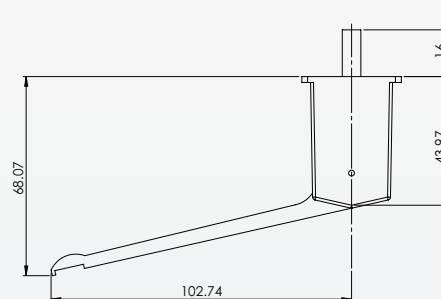
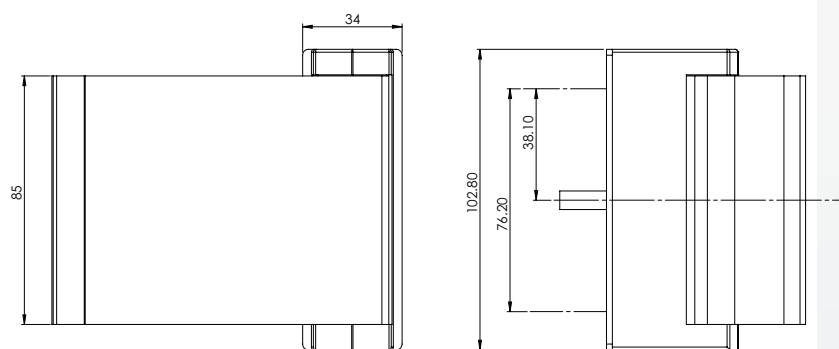
- Paddle handle for use with deadlatches
- Suit 44mm thick doors
- Cam plug non-handed. Reversible in the field

Functionality

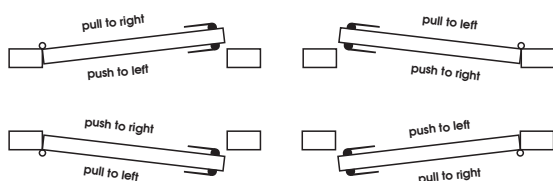
Designed to be ergonomically friendly and practical. Coming complete with cam plug enables the handles to be used in conjunction with the 524510 deadlatch range of locks.



Code	Description	For use with	Finish
524591	Paddle handle complete with cam plug pull to left	4510	SAA
524592	Paddle handle complete with cam plug push to left	4510	SAA
524597	Paddle handle complete with cam plug pull to right	4510	SAA
524598	Paddle handle complete with cam plug push to right	4510	SAA



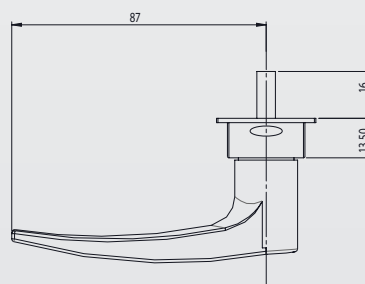
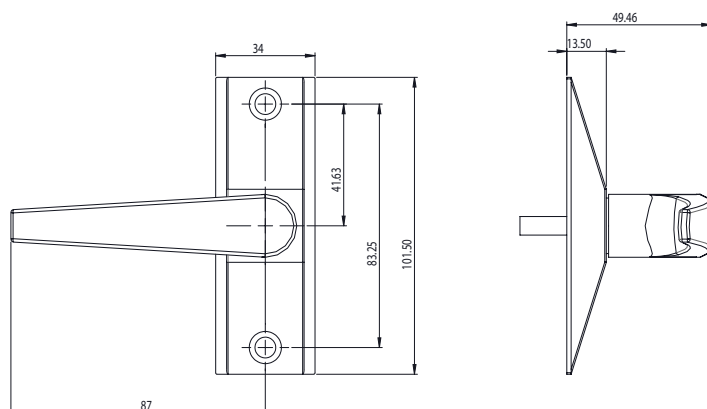
Inside of Doorway



Outside of Doorway



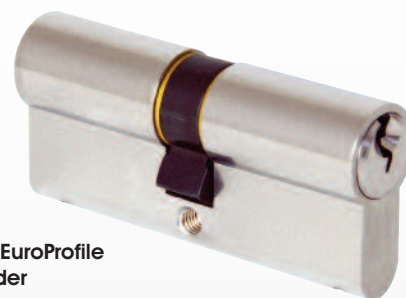
Code	Description	For use with	Finish
5245601	Lever handle complete with cam plug (RH)	4510	SAA
5245602	Lever handle complete with cam plug (LH)	4510	SAA
HP4560-EXT-RH	Extended cam - RH		N/A
HP4560-EXT-LH	Extended cam - LH		N/A



Features

- Keyed alike and keyed different options available
- Dual and half profile

Code	Description	For use with	Finish
5210	Alpro key blank – Euro	Profile cylinders	N/A
5211	Lock mounting clips – per pair	All locks	N/A
5214	Double Europrofile cylinder 60mm – keyed to differ	4570/220/221	SAA
5216/KA1	Double Europrofile cylinder 60mm (KA Set 1) – keyed to pass	4570/220/221	SAA
5216/KA2	Double Europrofile cylinder 60mm (KA Set 2) – keyed to pass	4570/220/221	SAA
5218	Key and thumbturn Euro cylinder 60mm – keyed to differ	4570/220/221	SAA
5220/KA1	Key and thumbturn Euro cylinder 60mm (KA Set 1) – keyed to pass	4570/220/221	SAA
5220/KA2	Key and thumbturn Euro cylinder 60mm (KA Set 2) – keyed to pass	4570/220/221	SAA
5222	Half Europrofile cylinder 30mm – keyed to differ	4570/220/221	SAA
5224/KA1	Half Europrofile cylinder 30mm (KA Set 1) – keyed to pass	4570/220/221	SAA
5224/KA2	Half Europrofile cylinder 30mm (KA Set 2) – keyed to pass	4570/220/221	SAA
5226	Self adhesive escutcheons	4570/220/221	SAA
5227	Self adhesive escutcheons	4570/220/221	Black
5258	Double cylinder x 2 keyed alike as a pair	4570/220/221	SAA
5259	Double cylinder including key and thumbturn 60mm 1 pair – keyed to pass	4570/220/221	SAA
5260	Key and thumbturn Euro cylinder 60mm 1 pair – keyed to pass	4570/220/221	SAA



**5214 EuroProfile
Cylinder**



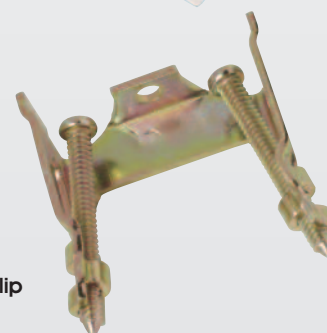
**5218 Europrofile
Cylinder and
Thumbturn**



**5222 Half Profile
Cylinder**



5245-FIX-KIT
Fixing kit for
Deadlatches



**5211 Lock
Mounting Clip**

Round Mortice Cylinders

Features

- Standard keyways
- Range of finishes
- 1⁵/₃₂" standard cylinder

Code	Description	For use with	Finish
5228	Round mortice cylinder keyed to differ	1820/1850/4510	Satin
5228-TRIM	Trim ring - round mortice cylinder		Satin
5229	Round mortice cylinder keyed to pass	1820/1850/4510	Satin
5230	Round mortice thumbturn	1820/1850/4510	Satin
5231	Round mortice cylinder guard	1820/1850/4510	Satin
5241	Pair of 5228 round mortice cylinders complete with 2 keys		Satin
5242	Round mortice cylinder - trim ring 1.5mm thick	5228/5229/5230	Satin
5243	Round mortice cylinder - trim ring 2.5mm thick	5228/5229/5230	Satin
5244	Round mortice cylinder - trim ring 3mm thick	5228/5229/5230	Satin
5247	Key blank	Round cylinders	

Armoured Strikes

Features

- Armoured strike
- Increased jamb protection

Code	Description	For use with	Finish
5212	Armoured strike	220	N/A
5213	Armoured strike faceplate - Radius	220	N/A
5213-FLAT	Armoured strike faceplate - Flat	220	N/A

Flushbolts and Accessories

Features

- Die cast zinc alloy operation mechanism
- Available in Silver finish
- Complete with bolt guide
- Spring loaded floor sockets available on request
- Flat or radius profiles available

Functionality

Flushbolts are used to facilitate the locking of the inactive leaf of a pair of aluminium, steel or timber doors. Complete with the necessary flushbolt guide and optional spring loaded floor sockets, the bolts allow both a secure and aesthetically pleasing locking solution.

Code	Description	Finish
60FSAA	Flat flushbolt - complete with guide	SAA
60RSAA	Radius flushbolt - complete with guide	SAA
60FS	Floor socket	N/A
60BG	Bolt guide	N/A

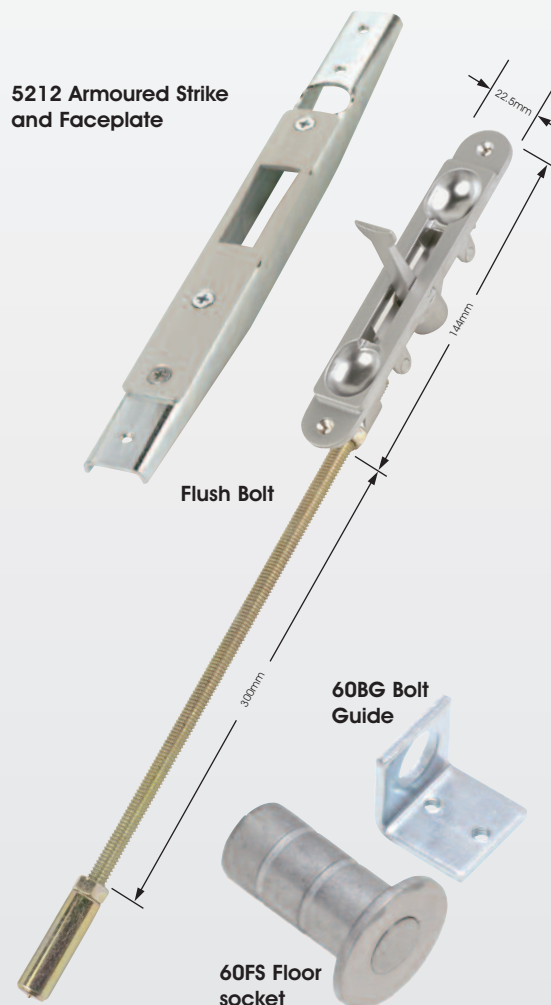


5228 Round Mortice Cylinder

5230 Round Mortice Thumbturn



5231 Round Mortice Cylinder Guard



Functionality

Magnets can be used to facilitate access and exit control systems for a variety of aluminium, timber and steel doors. The magnets embodies clean aesthetic looks with the ability to maintain a holding force of 250kgs (550lbs), offers low maintenance, and ease of installation. They provide positive fail safe operation (unless battery back up is available) at all times. Suitable for both inward and outward opening doors.

250kg Mini Magnets

Code	Description
56121	250kgs mini magnet non monitored
56122	250kgs double mini magnet non monitored
56111	250kgs mini magnet monitored
56112	250kgs double mini magnet monitored

Specification - (250kg mini magnet)

Single magnet	25mm x 250mm x 42mm
Double magnet	25mm x 500mm x 42mm
Armature plate	160mm x 36mm x 11mm (x 2 for double magnet)
Holding force	250kgs (550lbs) (x 2 for double magnet)

500kg Magnets

Code	Description
56221	500kgs magnet non monitored
56222	500kgs double magnet non monitored
56211	500kgs magnet monitored
56212	500kgs double magnet monitored

Specification - (500kg magnet)

Single magnet	40mm x 266mm x 73mm
Double magnet	40mm x 532mm x 73mm
Armature plate	160mm x 61mm x 16mm (x 2 for double magnet)
Holding force	510kgs (1120lbs) (x 2 for double magnet)

General Specification

Supply voltage	Dual voltage 12 or 24vDC (Dual coil). Nominal +/- 10%
Nominal current	500mA @ 12vDC, 250mA @ 24vDC
	Built in voltage spike suppressor
Monitoring	Relay with dry contact integral LED
Door Gaps	Maximum 3mm
Positioning	Outward opening - surface mounted to door header transom bar. Inward opening - door frame transom bar using L and Z brackets
Magnet housing	Brushed Satin Aluminium
Please note	To ensure immediate release, it is important that the release switch breaks the circuit between the power supply and the magnet

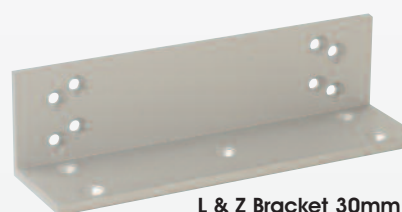
Magnet Accessories

Adjustable L brackets: Suits typical outward opening door applications, where space restrictions do not allow the magnet to be fitted at the head of the door frame. L & Z brackets allow magnets to be used on inward opening door applications.

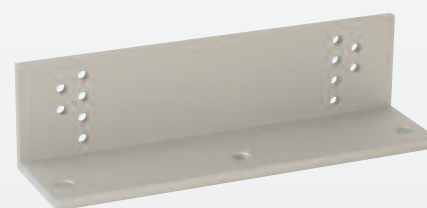
Code	Description
561A	L bracket for mini magnet
562A	L & Z bracket for mini magnet
563A	L bracket for 500kgs magnet
564A	L & Z bracket for 500kgs magnet
N.B. - 2 brackets required for double magnet	



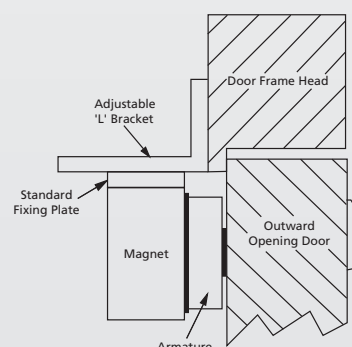
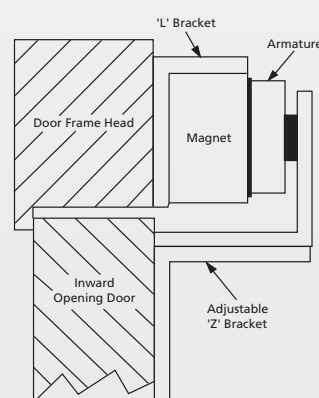
Adjustable L Bracket
30mm x 250mm x 48mm



L & Z Bracket 30mm x 250mm x 48mm
(adjustable and standard L brackets)



L & Z Bracket 30mm x 250mm x 48mm
50mm x 160mm x 50mm (adjustable plates)



Features

- Independently tested to 250,000 double action cycles to EN1154
- 90° hold open facility available at no extra cost
- Standard spindle length - 12mm
- Replacement items available for retrofit installations and maintenance
- Quality products at acceptable prices
- Nationwide maintenance service available

Functionality

The overhead door closer is designed to be concealed within the transom header bar of the door. It provides controlled closing of a single or double action, aluminium door or doors. Features built into the closer include dual closing speeds to allow flexibility in closing; three levels of spring strength and 90° hold open facility. The closer comes complete with its own fixing pack and comprehensive fixing instructions. Various arms and spindle lengths are available on request.

Side Loading Option (Includes 51A2 Arm)

Code	Description
DDA-NHO-T1-U	DDA Compliant - no hold open
510100T1-U	Light duty (size 1) - no hold open
510200T1-U	Medium duty (size 2) - no hold open
510300T1-U	Heavy duty (size 3) - no hold open
510900T1-U	Variable strength - no hold open
DDA-HO-T1-U	DDA Compliant - 90° hold open
510190T1-U	Light duty (size 1) - 90° hold open
510290T1-U	Medium duty (size 2) - 90° hold open
510390T1-U	Heavy duty (size 3) - 90° hold open
510990T1-U	Variable strength - 90° hold open
510400DT1-U	Dummy Closer

End Loading Option (Includes 51A3 Arm)

Code	Description
DDA-NHO-T2-U	DDA Compliant - no hold open
510100T2-U	Light duty (size 1) - no hold open
510200T2-U	Medium duty (size 2) - no hold open
510300T2-U	Heavy duty (size 3) - no hold open
510900T2-U	Variable strength - no hold open
DDA-HO-T2-U	DDA Compliant - 90° hold open
510190T2-U	Light duty (size 1) - 90° hold open
510290T2-U	Medium duty (size 2) - 90° hold open
510390T2-U	Heavy duty (size 3) - 90° hold open
510990T2-U	Variable strength - 90° hold open
510400DT2-U	Dummy Closer

Short Side Loading Option (Includes 51A1 Arm)

Code	Description
DDA-NHO-T3-U	DDA Compliant - no hold open
510100T3-U	Light duty (size 1) - no hold open
510200T3-U	Medium duty (size 2) - no hold open
510300T3-U	Heavy duty (size 3) - no hold open
510900T3-U	Variable strength - no hold open
DDA-HO-T3-U	DDA Compliant - 90° hold open
510190T3-U	Light duty (size 1) - 90° hold open
510290T3-U	Medium duty (size 2) - 90° hold open
510390T3-U	Heavy duty (size 3) - 90° hold open
510990T3-U	Variable strength - 90° hold open
510400DT3-U	Dummy Closer



51A1

Special Top Arm Assembly
Short Side Load
For use with 65mm pivot and 51A5 'F' bracket



51A2

Side Load Top Arm Assembly
70mm pivot



NB - Trade pack quantity for all closer types is 4
 - 17mm Extended Spindle, change code to 'X-U'
 i.e 510190T1X-U
 - 22mm Extended Spindle, change code to 'X-U-22'
 i.e 510190T1X-U-22

closers

Overhead Specifications

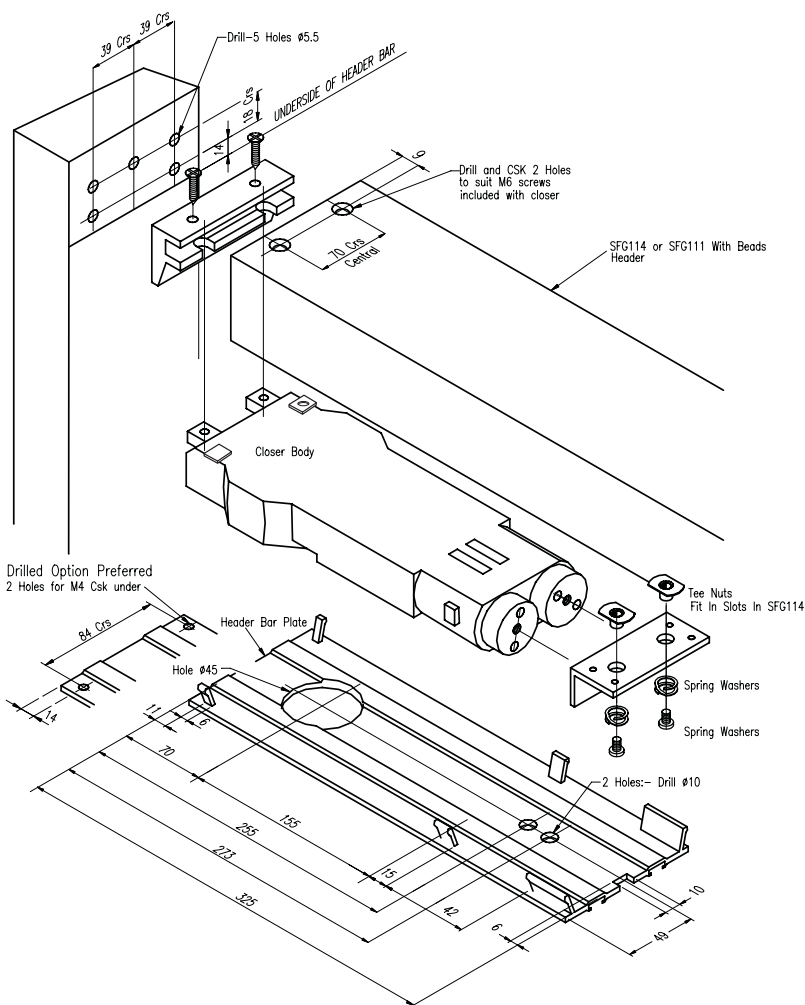


Dimensions	293mm x 90mm
Concealed thickness	37mm
Maximum door width	Light spring - under 750mm (size 1) Medium spring - 751mm to 950mm (size 2) Heavy spring - 951mm to 1150mm (size 3)
Maximum door weight	100kg
Maximum door height	Light, medium and heavy spring - 2540mm
Closing speed	Dual; initial closing speed is factory preset. Final closing speed is full adjustable after installation
Lubrication	Stable hydraulic fluid suitable for most climatic conditions and constant lubrication
Function	Built in positive back stop and optional 90° hold open position

Accessories

Code	Description
51A1	Special top arm assembly - short side load
51A2	Side load top arm assembly
51A3	End load top assembly - use for round nose stiles
51A4	Standard bottom pivot assembly
51A5	"F" bracket, closing jamb/header bar bracket including fixings
51A10	Heavy duty bottom pivot assembly - maximum weight 120kg

Preparation Detail



51A3

End Load Top Assembly
Use for Roundnose Stiles



51A4

Bottom Pivot Assembly

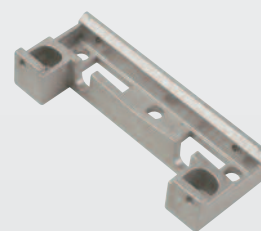
51A10

Heavy Duty Bottom
Pivot Assembly also
available



51A5

'F' Bracket with Screws (Set A)



access control

3000 Series Simplex Digital Lock



Features

- Designed for narrow stile aluminium doors
- In or out swing doors
- Key override, lockout and passage features
- Requires factory handed drive mechanism
- Satin Chrome finish
- Simple on door code change

Functionality

The 3000 Series Simplex Digital Lock provides fully mechanical pushbutton access control for narrow stile aluminium doors, with no electrical wiring, electronics or batteries. Exterior access is by combination or key override. Egress is by Alpro hardware and is free at all times.

The 3000 Series lock is designed for use with Alpro latch mechanisms and most Alpro egress hardware. Any standard mortice cylinder that operates the Alpro latch will function with a 3000 series lock. Key cylinders, cylinder trim rings, mortice latches and egress hardware are not provided.

3000 Series locks are ideal for limiting access to high traffic, security sensitive areas in commercial, institutional, government and industrial buildings. These locks are perfect for locations with a high personnel turnover rate such as data processing centres, employee entrances, R&D labs, apartments, dormitories and restricted areas in hospitals and airports.

The pushbutton design eliminates problems associated with the issue, control and collection of keys and magnetic cards. The combination can be quickly and easily changed to ensure continued security once employees, tenants or guests leave, saving the cost of new keys, cylinders, magnetic cards and card-encoding devices. The combination is changed without removing the lock from the door.

Code	Description	Finish
ALP3000	Digital lock body	Satin/Chrome
ALP3010	Lock back plate RH	
ALP3020	Lock back plate LH	

Accessories

Code	Description	Finish
5228	Round mortice cylinder keyed to differ	Satin
5229	Round mortice cylinder keyed to pass	Satin
5242	Round mortice cylinder – trim ring 1.5mm thick	Satin
5245101	Deadlatch to suit round mortice cylinder – 1 1/8" backset (RH)	N/A
5245102	Deadlatch to suit round mortice cylinder – 1 1/8" backset (LH)	N/A
5245103	Deadlatch to suit round mortice cylinder – 3 1/32" backset (RH)	N/A
5245104	Deadlatch to suit round mortice cylinder – 3 1/32" backset (LH)	N/A
52FP4511	Flat faceplate	SAA



access control

3000 Series Digital Lock - Parts Required

Hinged on Left Opening In

- ALP3000 Digital Unit
- ALP3020 Drive Assembly (LH)
- 5228 Round Mortice Cylinder
- 5242 1.5mm Cylinder Trim Ring
- 524510(2) or (4) Round Mortice Deadlatch (LH)
- 52FP4511 Flat Faceplate*

Internal Egress any one of the following

- 5230 Round Mortice Thumbturn
- 5245602 Lever Handle & Cam Plug (LH)
- 524597 Paddle Handle & Cam Plug (Pull RH)

Hinged on Right Opening In

- ALP3000 Digital Unit
- ALP3010 Drive Assembly (RH)
- 5228 Round Mortice Cylinder
- 5242 1.5mm Cylinder Trim Ring
- 524510(1) or (3) Round Mortice Deadlatch (RH)
- 52FP4511 Flat Faceplate*

Internal Egress any one of the following

- 5230 Round Mortice Thumbturn
- 5245601 Lever Handle & Cam Plug (RH)
- 524591 Paddle Handle & Cam Plug (Pull LH)

Hinged on Left Opening Out

- ALP3000 Digital Unit
- ALP3020 Drive Assembly (LH)
- 5228 Round Mortice Cylinder
- 5242 1.5mm Cylinder Trim Ring
- 524510(1) or (3) Round Mortice Deadlatch (RH)
- 52FP4511 Flat Faceplate*

Internal Egress any one of the following

- 5230 Round Mortice Thumbturn
- 5245602 Lever Handle & Cam Plug (LH)
- 524598 Paddle Handle & Cam Plug (Pull RH)

Hinged on Right Opening Out

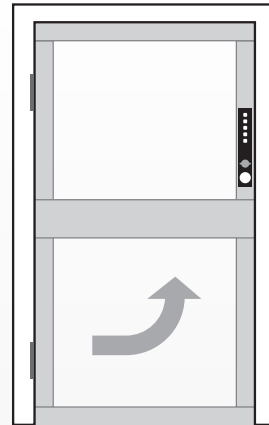
- ALP3000 Digital Unit
- ALP3010 Drive Assembly (RH)
- 5228 Round Mortice Cylinder
- 5242 1.5mm Cylinder Trim Ring
- 524510(2) or (4) Round Mortice Deadlatch (LH)
- 52FP4511 Flat Faceplate*

Internal Egress any one of the following

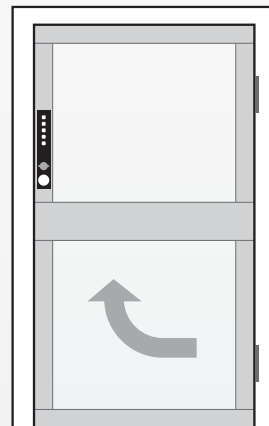
- 5230 Round Mortice Thumbturn
- 5245601 Lever Handle & Cam Plug (RH)
- 524592 Paddle Handle & Cam Plug (Pull LH)

*Radius and Weather Strip faceplates available

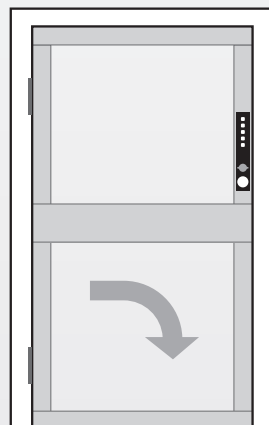
Important Note: Handing of Alpro 3000 Mechanical Digital Locks must be done looking at the side of the door the digital unit will be fixed to, as shown in the diagrams opposite.



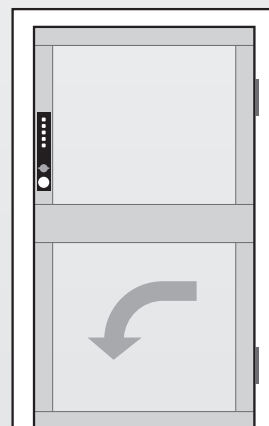
Hinged on Left
Opening In



Hinged on Right
Opening In



Hinged on Left
Opening Out



Hinged on Right
Opening Out

access control

Compact Shearlock Magnet



Functionality

The Alpro EMS1200 compact shearlock is available in mortice or surface mount models (inc. glass mount) and offers slimline dimensions whilst maintaining a holding force in shear of 1200kg. Versatile installation suitable for single or double action doors.

Other benefits include built in PCB controller with switch selectable features and plug in 3 metre flying leads.

Compact Design

Magnet 163mm (L) x 30mm (W) x 35mm (D)
Armature 163mm (L) x 30mm (W) x 32mm (D)

Accessories

For use with surface mount housings. Aluminium glass mount bracket suitable for 10-12mm glass - 230mm (L) x 30mm (W) x 45mm (D)

Filler plates – 225mm (L) x 1/2/6mm (W) x 38mm(D)

Code	Description
EMS1200M	Mortice shearlock 12/24v DC Door Position switch – monitored complete with on board PCB/plug in 3m flying leads
EMS1200S	Surface mount shearlock as above complete with surface mount housings x 2
EMS1200MS	Mortice shearlock as above complete with surface mount housings x 1

Accessories

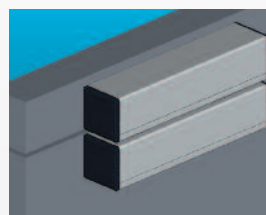
Code	Description
GDC 1200	Aluminium frameless glass (10/12mm) door clamp for use with EMS1200S. One per surface mount housing e.g. 2 required for use with EMS1200S. 1 required for use with EMS1200SM
FP1200-1	Aluminium filler plate 1mm thick x 1
FP1200-2	Aluminium filler plate 2mm thick x 1
FP1200-6	Aluminium filter plate 6mm thick x 1

Regulated Power Supply

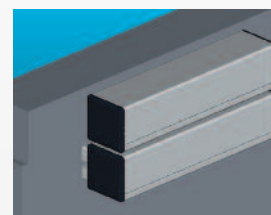
Code	Description
IECPSU12V2AMP	12v 2Amp power supply unit
IECPSU24V2AMP	24v 2Amp power supply unit

Regulated PSU required for correct operation

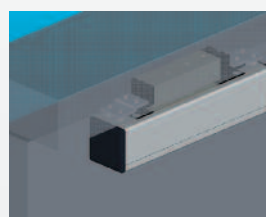
Independent DPS (door position switch) required for steel door applications. Suitable positive centring closer required on double action doors.



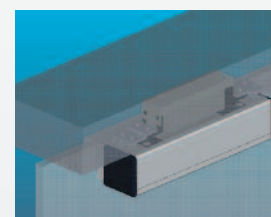
Metal door to metal frame - flush



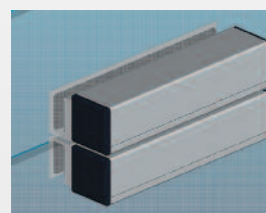
Metal door to metal frame - Offset



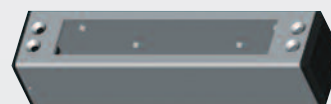
Metal door to metal frame



Frameless glass door to metal frame. Armature surface



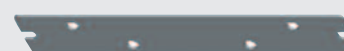
Frameless glass door to glass



SM1200



GDC1200



FP 1200-1/2/6

AL110 ANSI Electric Strike

Features

Compact body design - 35mm depth
Deep jaw - accepts 13mm latch bolt
Simple function changeover
Low current consumption - 12vDc - 200mA
- 24vDC - 100mA
Holding force 1,750Kg (3,860lb) - factory tested
Long and short ANSI stainless steel faceplates
15, 25, 50 & 70mm extension lips available
Mounting kit supplied as standard
Monitored version available
Easy installation
Weather resistant



Code	Description	Function
AL111AS	12/24vDC ANSI Short	Fail Safe/PTL
AL112AS	12/24vDC ANSI Short	Fail Secure/PTO
AL111BS	12/24vDC ANSI Long	Fail Safe/PTL
AL112BS	12/24vDC ANSI Long	Fail Secure/PTO

AL2000 Monitored Electric Strike

Features

Stainless steel one part body and striker
Compact body design - 26mm overall depth
Fail Safe/Fail Secure selectable
Latch & Door monitoring
Anti-tamper monitoring
Low current consumption - 12vDC - 220mA
- 24vDC - 110mA
Holding force - 1,380kg (3,000lb) - factory tested
Unmonitored version available
15, 25, 50 & 75mm extension lips available
Easy installation
Weather resistant



Code	Description	Function
AL2001	12/24vDC Monitored	Fail Safe/PTL

AL150 RIM Electric Strike

Features

Stainless steel striker
Compact cast aluminium body - Enclosed in one-part case
Simple Fail Safe/Fail Secure Changeover
Latch & Door monitoring
Low current consumption - 200mA - 12vDC Continuous ($\pm 15\%$)
- 100mA - 24vDC Continuous ($\pm 15\%$)
Holding force - 750kg (1,680lb) - factory tested
Easy installation
Weather resistant

Code	Description	Function
AL151	12/24vDC Rim Strike	Fail Safe/PTL

PLEASE SEE OUR ACCESS CONTROL CATALOGUE FOR OUR FULL RANGE

Solenoid Bolts & Waterproof Keypads



EB250 & EB250KO Solenoid Bolt

Features

Stainless steel bolt - 14mm diameter / 14mm throw

Stainless steel construction - holds up to 1,000kg

Mortice and surface fitting

Horizontal and vertical installation

Dual monitoring - EB250 / Triple Monitoring - EB250KO

Low current consumption - 12vDC - 120mA

- 24vDC - 70mA

Automatic voltage adjustments - from 12vDC to 24vDC

Built in access control processor - automatic unlock period - 8 seconds

Multiple auto relock function

Key override model available (EB250KO)

Accessories available

Code	Description	Function
EB-250/PTL	12-24vDC Radius Faceplate	Fail Open/PTL
EB-250/PTL	12-24vDC Square Faceplate	Fail Open/PTL
EB-250KO/PTO	12-24vDC Key Override Radius Faceplate	Fail Secure/PTO
EB-250SKO/PTO	12-24vDC Key Override Square Faceplate	Fail Secure/PTO



Waterproof Keypads

Features

No moving parts - Solid state Piezo technology

Waterproof – IP68 Certificated - Highest certification possible

Slimline design - 44.5mm (W) x 181mm (L)

Tamper resistant - Security plugs provided

Vandal resistant - One piece solid housing

Variable length codes - from 4 to 8 digit codes can be used simultaneously

Up to 200 user codes - 100 million combinations 4 to 8 digit codes

CE and UL approved

Code	Description
Self contained single door access control - 200 users	
AS-626S-200	Slim surface mount, 2 x 6, 2 LED, outdoor/indoor, bright aluminium

Waterproof Exit Switches also available

Please contact the Sales Office for details and order codes.

**PLEASE SEE OUR ACCESS CONTROL CATALOGUE
FOR OUR FULL RANGE**

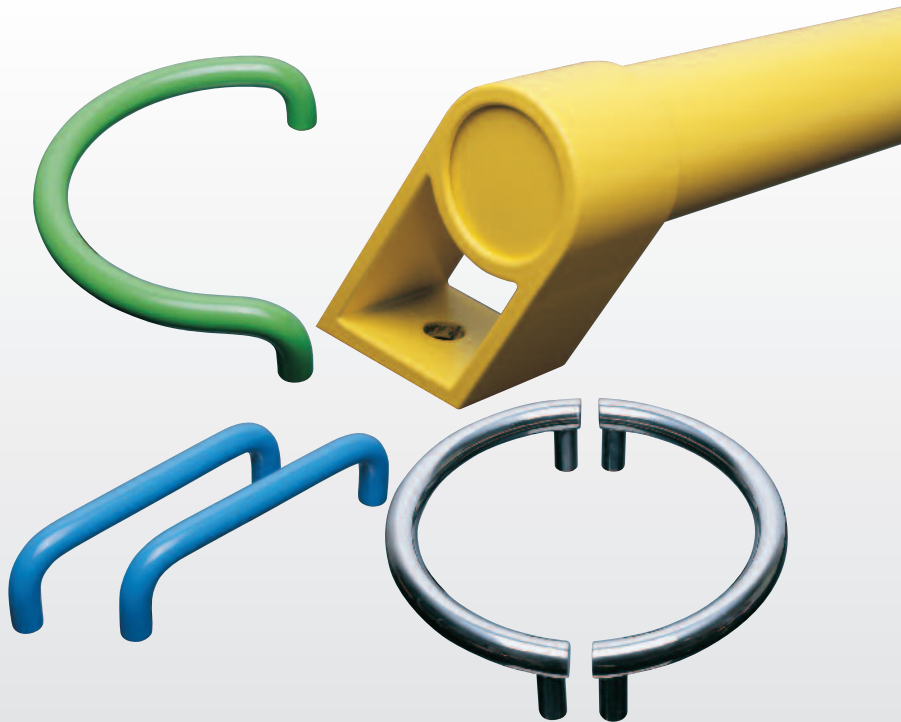


other products

Door Handles

Alpro door handles are bold and modern in appearance and practical in everyday use.

- Aluminium, timber and glass door applications
- Made from stainless steel and aluminium with powder and nylon coated versions to RAL colours
- Wide range of styles and finishes
- Many sizes available from stock or within a few days



Access Control

Alpro also offer a comprehensive range of high quality, high security access control products to suit even the most demanding of situations.

The range includes:

- Electric Strikes
- Solenoid Bolts
- Deadlocking Bolts
- Infrared Proximity Switches
- Compact Shearlocks
- Vortex Magnets
- Cabinet Locks
- Waterproof Keypads
- Waterproof Exit Switches
- Interlock Controllers
- Power Supply Units



Our difference...



We are a family owned company founded in 1938 to supply quality mechanical components. Today we serve a broad band of industry with a wide range of quality products.

These are manufactured by companies of international repute who are each specialists in their own field.

We are approved to BS EN ISO 9001:2008.

We aim to provide the best in both products and service

- Experienced informative staff give fast, effective and friendly service.
- Technical support nationwide.
- Competitive and cost effective solutions.
- CAD design facility.
- Large stocks - same day despatch - Kanban and JIT deliveries.
- Modern technology combined with people.
- Listen, communicate - no surprises!
- Think long term - everlasting customers.



alpro®... the team that cares

Integrity • Expertise • Commitment

IEC Limited, Harwell Road, Nuffield Estate, Poole, Dorset BH17 0BD Great Britain

Registered in England 1925537

12/2013



T 01202 676262
F 01202 680101
E info@alpro.co.uk
W www.alpro.co.uk