

CR35

**Digital Image plate
X-ray system**

Portable Image plate scanner

Mobile

Detail Rich Imaging

Large Area X-ray Coverage

Multi Size, Flexible Image Plates

Portable Image Plate Scanner



Scanna CR35 is a portable x-ray inspection system that utilises flexible image plates for getting into tight spaces. The imaging plates are available in a range of different sizes allowing you to scan small objects as well as larger surface areas up to 43 x 35 cm. The optional QuadPlate allows you mount up to 4 Image Plates to check larger targets such as suitcases.

The CR35 scanning device, digitally scans the plates in less than 1 minute and you can then analyse, enhance and record the image on the laptop pc using the customised ScanView Security Inspection software.

The CR35 produces extremely high resolution x-ray images up to 80um with over 65,000 grayscales making it an invaluable system for those who need to make fast, accurate decisions. The unit is of particular benefit to police search teams, military units for EOD/IEDD, customs vehicle inspection, special operations and for security managers involved in building search and suspect package clearance in public areas.

x - r a y g e n e r a t o r s

CR35 comes with three permutations of x-ray generators, dependent upon the requirements of the task and specifications of the job.



Option 1:

XR200 Standard Generator

Applications: Police, General Security, Post Blast Investigation, NDT

Penetration: 15mm steel

Pulses per charge: 4,000

Dimensions: 31.75 (l) x 11.5 (w) x 19 (h) cm.

Weight : 5.5 kgs with battery



Option 2:

XR150 Lightweight Generator

Applications: Special Forces, Light Duty Applications

Penetration: 15mm steel

Pulses per charge: 1,500

Dimensions: 10.4 (l) x 8 (w) x 27.3 (h) cm.

Weight : 2 kgs with battery



Option 3:

XRS-3 Heavy Duty Generator

Applications: Military, UXO Inspection, Light Medium Industrial Applications

Penetration: 26 mm steel

Pulses per charge: 4,000

Dimensions: 35.5 (l) x 11.5 (w) x 19 (h) cm.

Weight : 5.5 kgs with battery

Ruggedised notebook and PC unit



Rugged Features - Fully rugged, Vibration & drop-shock resistant
MIL-STD 810F and IP54 compliance
CPU - Intel® Core™2 Duo L7400 1.5GHz processor, 667 MHz FSB,
4MB L2 cache
Memory - 1GB DDR2 expandable to 4GB
Storage - SATA 120GB expandable to 250GB
Keyboard - Waterproof membrane keyboard
VGA Controller - Integrated in Intel® 945GM, 128MB shared
memory
Display - 14.1" XGA or 15.0" SXGA+ (1400 x 1050) TFT LCD
Optional touch screen
Optional sunlight readable display
Media Bay - DVD super multi drive
Expansion Slots - PCMCIA Type II x 2 or Type III x 1
Communication Interface - 10/100/1000 base-T ethernet
56K ITU V.92 modem, Intel® PRO/Wireless 3945 a/b/g
Dimensions & Weight
14": 328 x 272 x 46 mm (12.9" x 10.7" x 1.8"), 4.15 kg (9.16lbs)
15": 338 x 286 x 46 mm (13.3" x 11.3" x 1.8"), 4.4 kg (9.9lbs)

Standard laptop PC and other rugged notebook options are available.

Scanview Image processing tools

Inverse polarity/negative image, Pseudo Colours, Sub-Image (select a region of interest), Image Rotate, Mirror and Flip Image, Sharpen Image, Soften Image, Clean Image, Histogram Equalisation, Histocontrast, Adjust Brightness and Contrast, Gamma Correction, 3D/Emboss, Measurement, Grid Overlay, Multiple Undo/Image Restore, Copy/ Paste, Shaped Regions, Image Stitching

Scanview Software

Select Image Resolution, Erase on/off selection, Reset image processing, X-ray Image Database: Searchable by Name, Date, Category, Place, Filename, X-ray generator, Operator, Create New Incident, Read Incident Notes, Define, Delete Operators, Database backup function, Retrieve image from database, Import Image from windows folder, Export Image as tiff, jpg, bmp to windows folder, 800% zoom, Image Annotation (text and vocal), 1:1 Image printing with notes, Email Image

Image Plates

X-ray images are captured using photo luminescent imaging plates. The Image Plates are flat and flexible and can be used up to 1,000 times. The Image Plates are available in a range of standard and custom sizes.



Standard image plate area

Standard: 18 x 24 cm
Medium : 24 x 30 cm
Large: 30 x 40 cm
X Large: 35 x 43 cm

Custom sizes up to 35 cm x 90 cm

Accessories

Image Plate Cassette (protects the image plate against dirt, scratches)

Scan/Feeder Envelope (protects the image plate from light and helps guidance into the processor)

Quad Plate (for mounting multiple image plates)

Image Plate Cleaner

CR35

features and benefits

CR35 is the easiest to use Computed Radiography (CR) system designed especially for for bomb and search technicians.

With flexible plates allowing operation in very confined areas and offering high resolution images in only 35 seconds CR35 is easy to use - just x-ray your target using the image plate, insert the plate into the scanner, scan and erase in one pass. During processing images are automatically equalized for optimum results.

There's no carousel or clips for image plates to worry about and loading and unloading is easy, even whilst wearing gloves. CR35 requires no separate device for erasing the plates either with its automatic inbuilt erasure facility you can use plates again immediately.

Versatile enough to operate in almost any light condition CR35 is also robust enough to be used from within its transport case or to be vehicle mounted.



CR35 Image Plate Processor

Range: 50 – 500 microns
Resolution in LP/mm: Max 10
USB data transfer
Automatic image plate erase selection
Dimensions: 52 x 38 x 39 cm
Weight: 21 kgs
Voltage: 100-240V
Power Options: Mains, 24V battery, Vehicle Power
Laser Class: 1

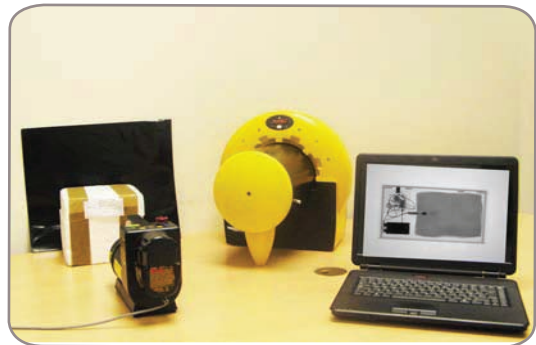


Flexible Plates

Image plates so flexible you can attach them to almost any surface.

NSN: 6350-99-667-0112

Due to our policy of continuous design and development, specifications are subject to change without notice.



Digital Image Plates

Use single image plates to x-ray smaller size objects and view images within 60 seconds



CR35 Quad Plates

Mount multiple image plates on the Quad Plate to x-ray larger items and then use the ScanView Imaging Software to stitch multiple images into a single image.



SCANNA MSC Ltd

223 Regent Street, London W1B 2EB, UK

Tel: +44 (0) 207 355 3555

Fax: +44 (0) 207 355 3556

www.scanna-msc.com