



# SCANMAX 225

**Professional X-ray Scanning**

**Large capacity X-ray scanner  
with advanced image analysis  
and networking**

**Large Capacity**

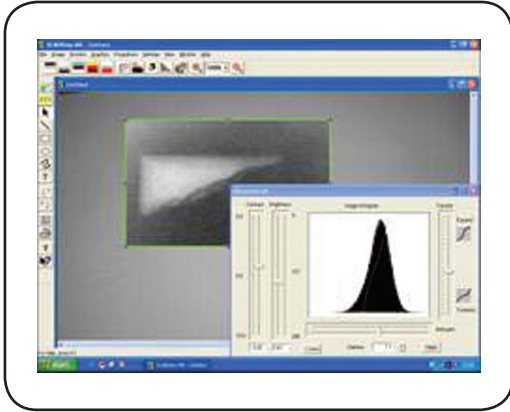
**Print and Network**

**Image Store / Database**

**Advanced Image Processing**

# SCANMAX 225

## X-ray postal scanner with advanced image processing/networking



The Scanna SCANMAX 225 large capacity mail and parcel X-ray scanner sees inside your mail and provides instant on the spot confirmation of the contents of unusual or unexpected packages, providing you with security peace of mind for your business

Designed to be easy to use by non-technical staff, the SCANMAX 225 combines a large inspection chamber with a slimline cabinet allowing you to examine volume mail, large parcels and briefcases in areas where space is at a premium.

SCANMAX 225 produces a clear colour image of a packet's contents and the powerful image processing software allows you to distinguish easily between harmless items and malicious mail and instantly confirms a parcel's safety. Suspect images can be stored internally, externally or shared across a network.

### features and benefits

#### Rapid Scanning

Items are placed into the inspection chamber and a single button action produces a clear image of the contents in seconds.

#### Compact and Easy to Use

The Scanmax 225 is especially designed for ease of use of use by non-technical staff and the front loading door and small footprint means it can be located virtually anywhere in the workspace.

#### Image Enhancements and Options

Images are automatically enhanced for greater clarity with inverse options and brightness/contrast adjust. There is also a multi-zoom option and colour highlighting of materials such as metals, areas of contrasting density, as well as highlighting of difficult to see low density substances such as powders, firework initiating devices and match heads.

#### Image Archive and Networking

X-ray images can be stored with operator notes on memory stick, to an internal or external hard-drive or streamed across a network for external expert analysis. Multiple x-ray machines can be linked and viewed from a central workstation

#### Safe and Secure

Scanmax 225 uses very low levels of X-rays and conforms to all published international Electrical Safety and Radiation Standards and is issued with a certified Radiation Safety and Test report.

#### User Training

A range of Operator Training Programmes and X-ray image recognition charts are available.

### technical specifications

#### Power Requirements

115/230V, 50/60 Hz

#### Physical Specifications

Height: 161.5cm (65.58")  
Width: 43 cm (16.93")  
Depth: 61cm (25.02")  
Net Weight: 180 kgs (396lbs)

#### Inspection Chamber

Height: 53.5 cm (21.06")  
Width: 42 cm (16.53")  
Depth: 56 cm (22.05")

#### Image Area

Depth: 54 cm (21.25")  
Width: 39.5cm (15.55")

#### Door Opening

53.5cm (21")x 34 cm (13.6")

#### Shipping Specifications

Height: 112 cm (45")  
Width: 77 cm (31")  
Depth: 150 cm (60")

#### Shipping Weight

250kgs



**SCANNA MSC Ltd**

**223 Regent Street, London W1B 2EB, UK**

**Tel: +44 (0) 207 355 3555**

**Fax: +44 (0) 207 355 3556**

**[www.scanna-msc.com](http://www.scanna-msc.com)**