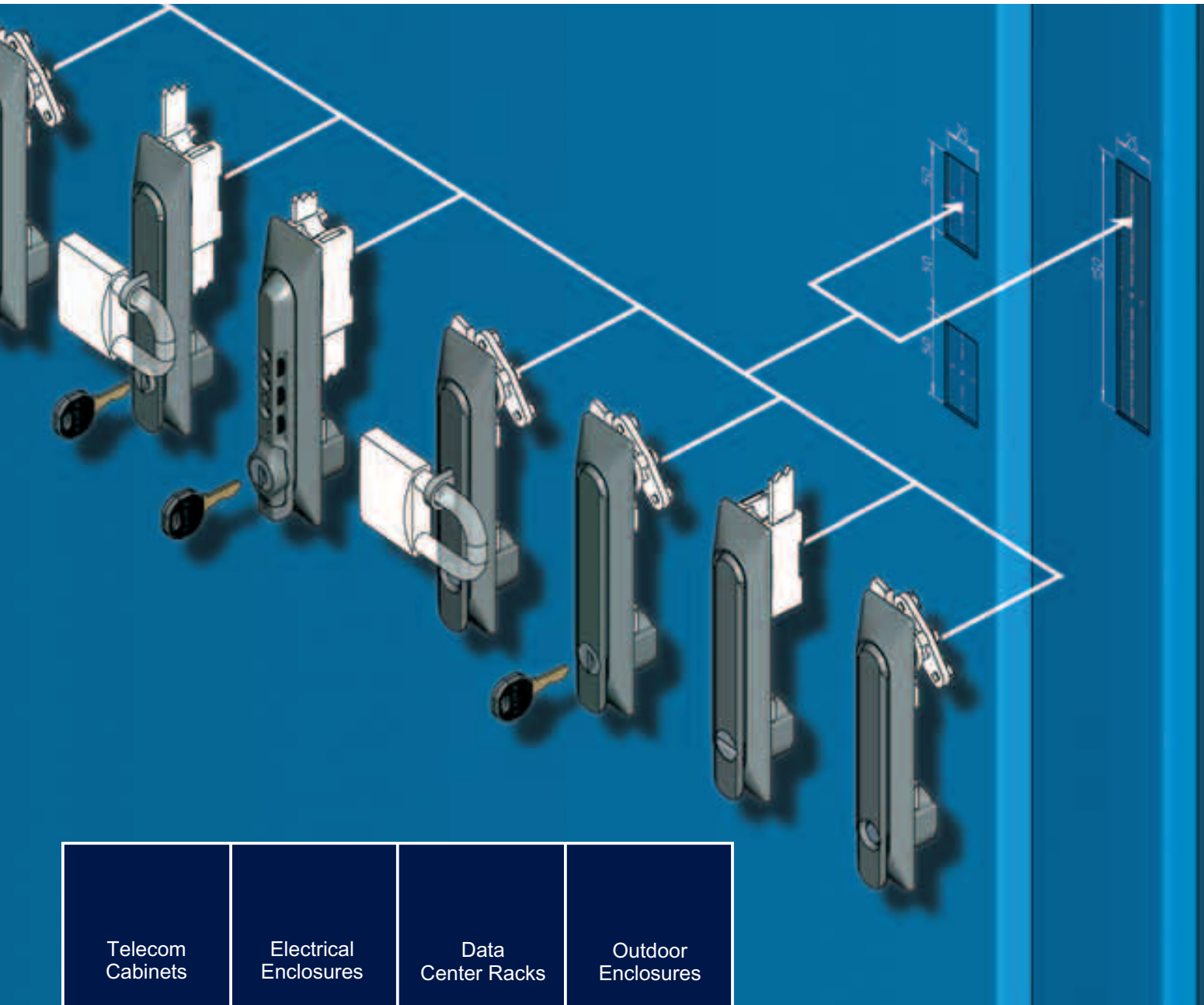


1150 UNitech Swinghandles

One System - Many Options

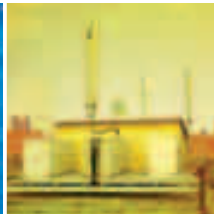


Telecom
Cabinets

Electrical
Enclosures

Data
Center Racks

Outdoor
Enclosures



The 1150 Swinghandle Family:

The 1150 family of swinghandles offer a wide range of locking and latching options. The new universal escutcheon introduces an enhanced level of modularity. This significantly increases the number of available options.

The new escutcheon fits in either of two standard cut outs and allows the designer to select either inside or outside the gasket latching whichever is optimum. Flexible master key systems are available.

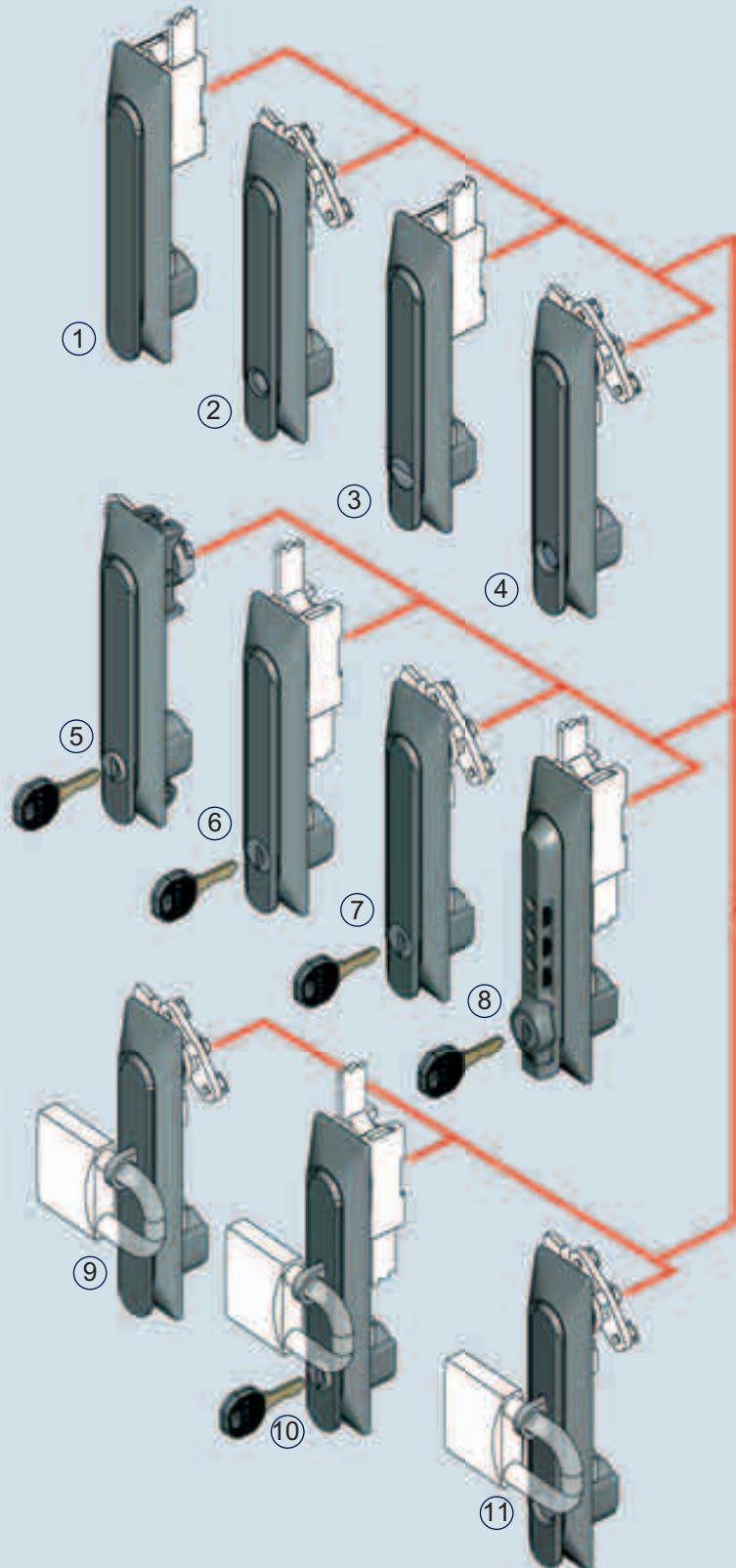


Options:

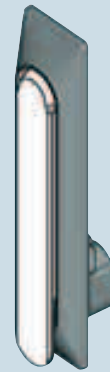
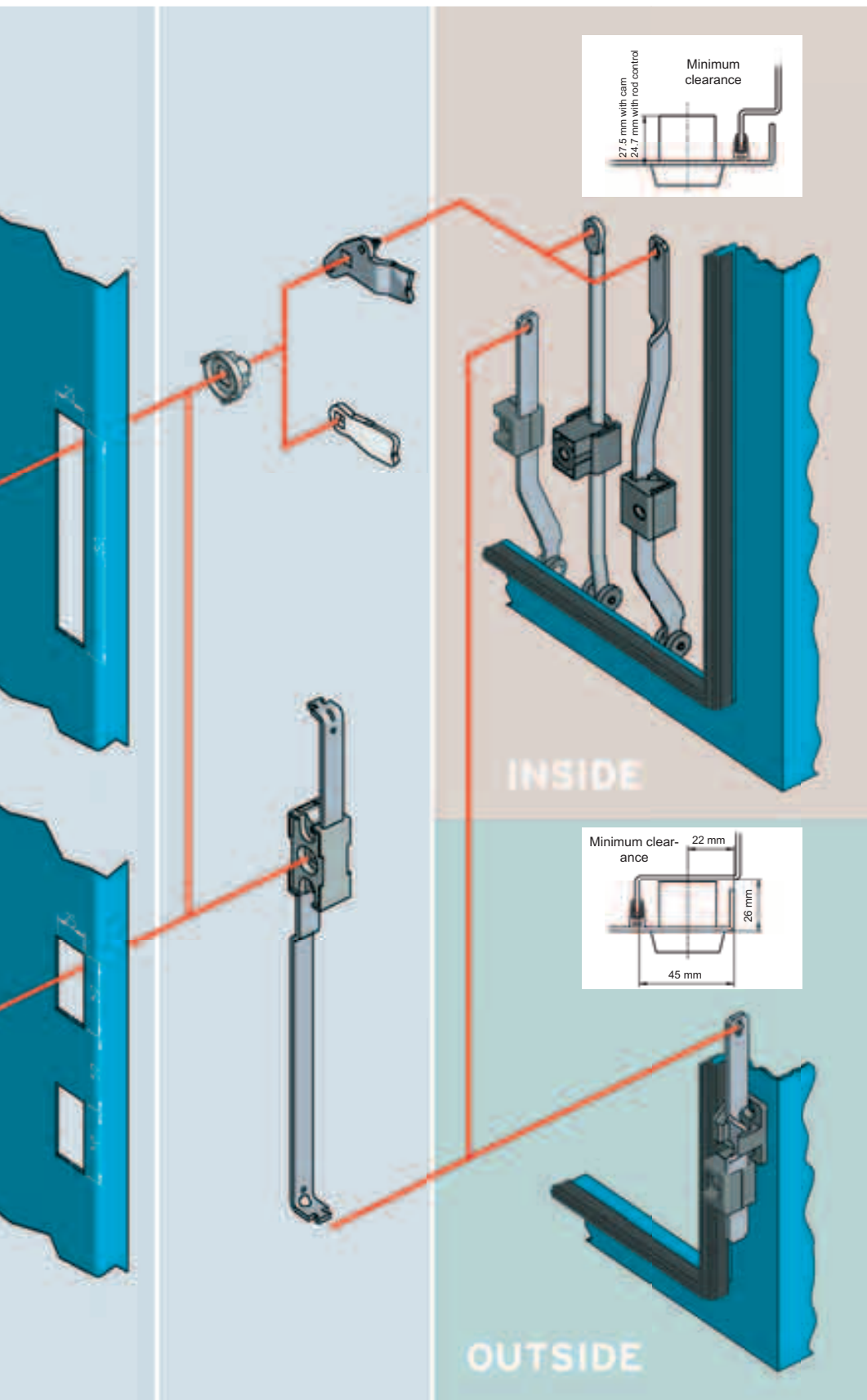
1. blank (no lock)
2. with push button
3. with insert (many types available)
4. "Push to Lock" function
5. quick installation; "Clip-in" version
6. with key cylinder
7. handle in zinc alloy or GR nylon (V0)
8. with combination lock & key override
9. for padlock - no other lock
10. for padlock and key cylinder or insert
11. for padlock and "Push to Lock" function

Other variants of the 1150 swinghandle range are shown on pages 4 & 5:

- Mini
- Medium
- High security, vandal resistant
- Swinghandles for the EMKA ELM (Electronic Locking & Monitoring) Security System



One System - Many Options



The new 1150 universal escutcheon is made from GR (glass reinforced) nylon to UL V0 self-extinguishing standards. It fits in to the most common cut outs:

- 25 mm x 50/50/50 mm
- 25 mm x 150 mm

Excellent sealing is ensured by a urethane foam-in-place gasket.

Installation options for use with cams or rod controls.



Install with hook and bridge bar



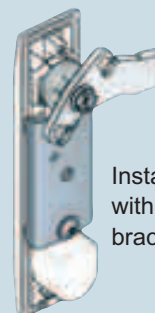
Install with hook and rod control



Install with bridge bars



Install with bridge bar and rod control



Install with steel bracket

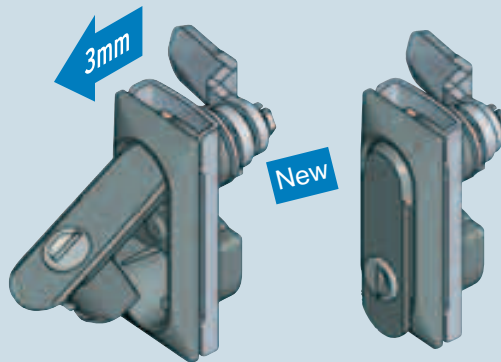
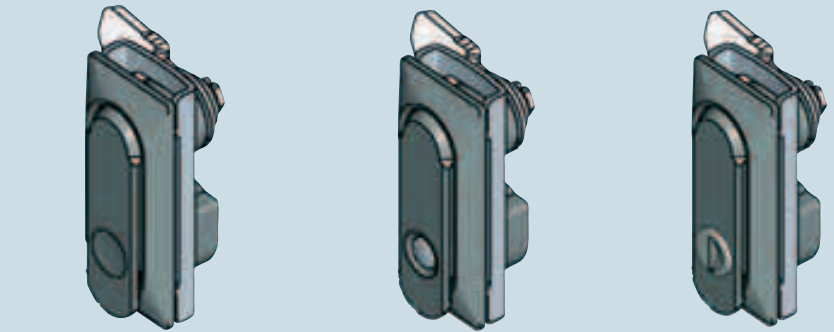
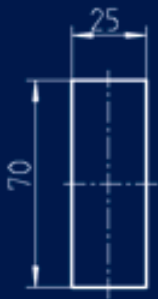
Note:
For door thickness limitations and part numbers please see page 10.

1150 Swinghandle Family: Many Options

“Mini” Style

Ideal for small enclosures or applications where space is critical: Locking, push button and plain versions available. For detailed information refer to EMKA main catalog (chapter 3C).

NEW: “Mini” style with compression function. When retracting the handle into the escutcheon the cam moves in axial direction 3 mm.



Black GR nylon handle and escutcheon Zinc plated mild steel installation hardware, zinc plated zinc alloy shaft, key cylinder has stainless steel cap and shutter, one silver steel key with black grip is included.

IP65

IP rating (with seal): IP 65

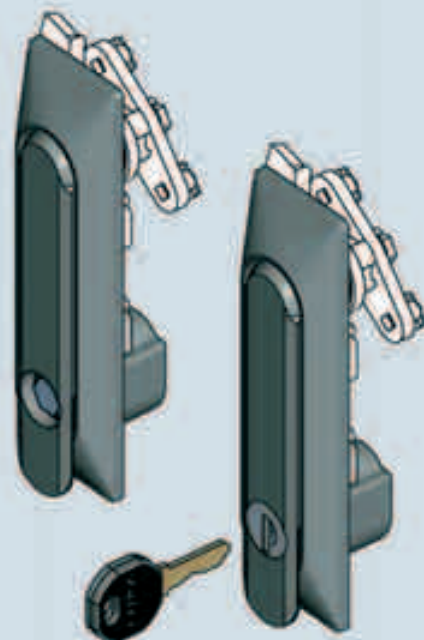
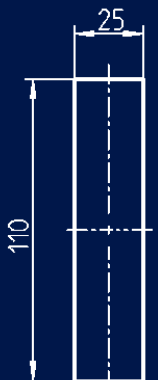
without seal	1152-U10
with seal	1152-U10-01

“Medium” style

Appropriate design when space for installation or operation is limited. Options:

- Handle and escutcheon in nylon.
- Handle and escutcheon black powder coated zinc alloy
- Zinc alloy handle, nylon escutcheon
- Key cylinder, insert, push button or no lock

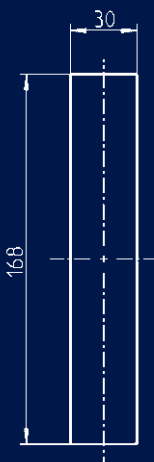
For detailed information refer to EMKA main catalog (chapter 3C).



Vandal resistant, stainless steel swing-handle

The new design meets the European vandal resistance and security standard DIN V ENV 1627 - 1630. Ideal for outdoor use in remote locations.

MATERIAL: Handle is all stainless steel including shaft and hardware. Foam-in-place urethane gasket. IP 65. For details see EMKA main catalog 3C-220



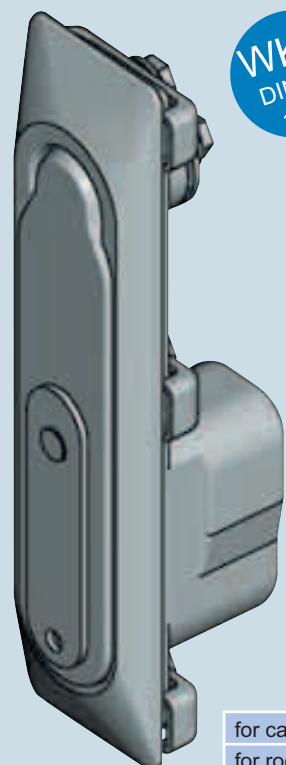
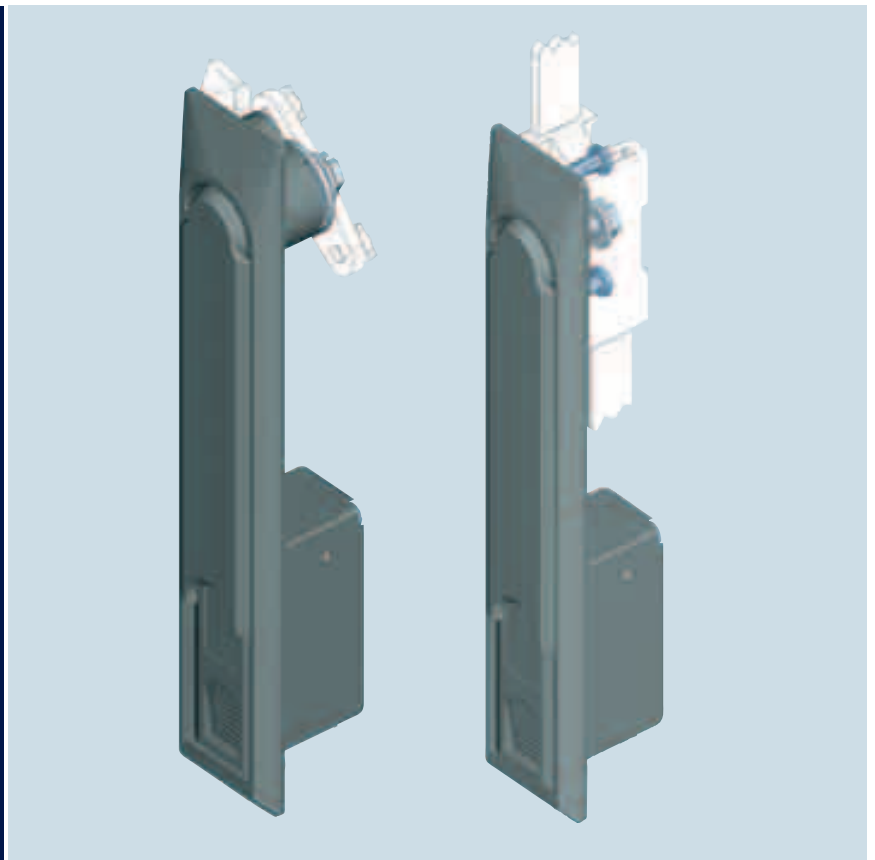
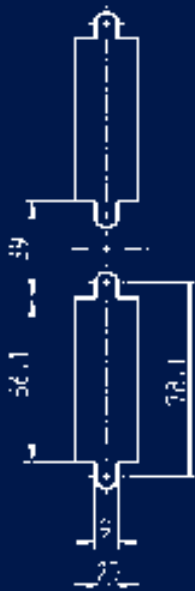
both Mechanical and Electronic

Swinghandle for locking modules including ELM

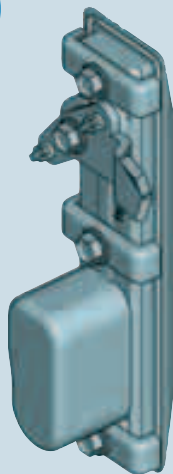
The 1151 swinghandle is fully compatible with all lock sets shown in 3XA of the main catalog plus the electronic locking modules. These electronic modules allow integration into the complete EMKA ELM electronic access control system.

This swing handle works with either cams or rod controls.

Further information: please see the EMKA main catalog, chapters 3C, 3XA, & 11



WK 2
DIN EN
1630



IP65

for cam	1154-U4
for rod control	on request

Electronically Operated Swinghandle

This advanced design uses an electric motor to operate the handle.

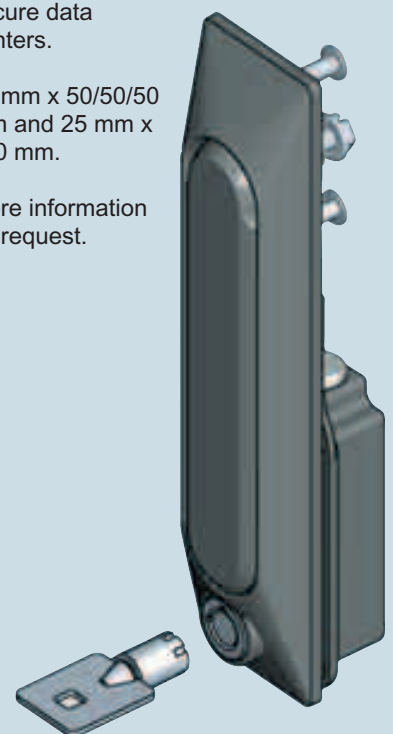
This handle fits the cut-outs of the most commonly used handles e.g. in data centers or server racks. It can be integrated easily into EMKA's ELM Electronic Locking & Monitoring Systems. Therefore it is ideal for upgrades to electronic access control.



Used in the most secure data centers.

25 mm x 50/50/50 mm and 25 mm x 150 mm.

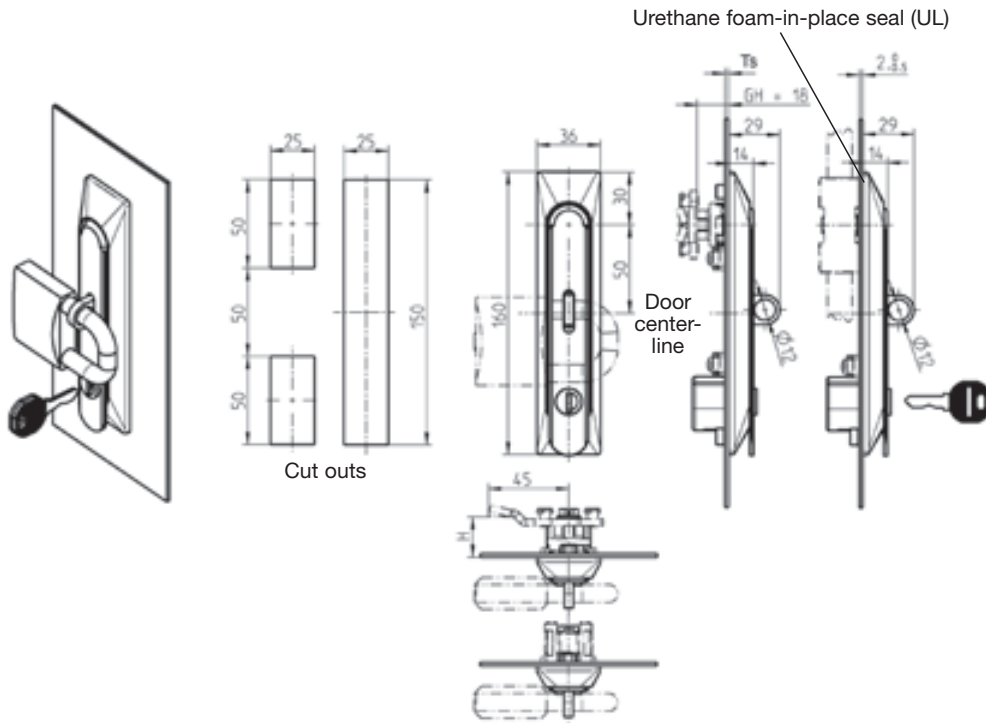
More information on request.



1150 Swinghandle with Universal Escutcheon for cam or rod control - Padlockable

PROGRAM 1150

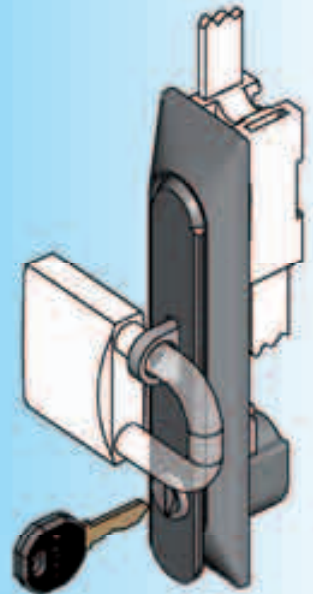
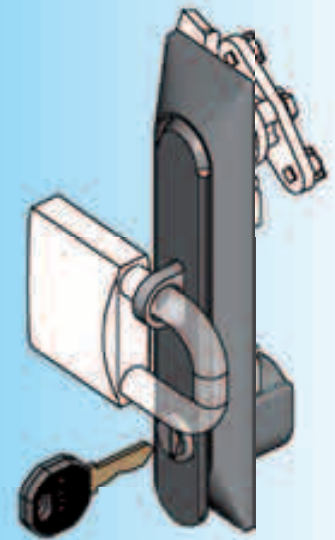
Beschlagteile



Note:
Please order installation hardware separately, refer to page 10.



IP 65



Black GR nylon escutcheon, black powder coated zinc alloy handle, zinc plated, zinc alloy shaft, key cylinder has stainless steel cap and shutter For each keyed handle one silver steel key with nylon grip is included.

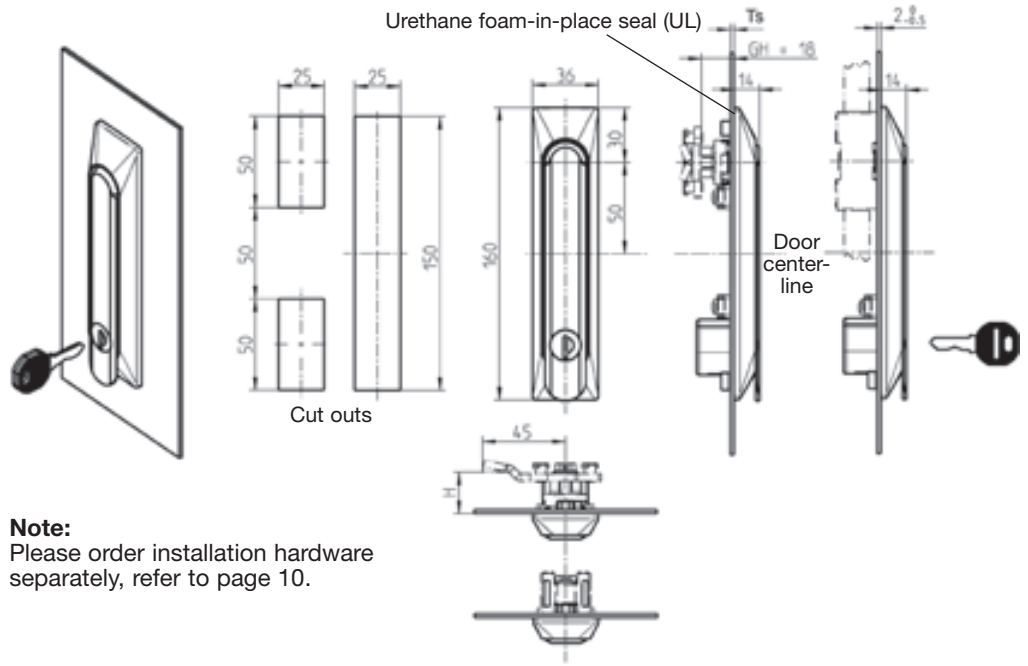
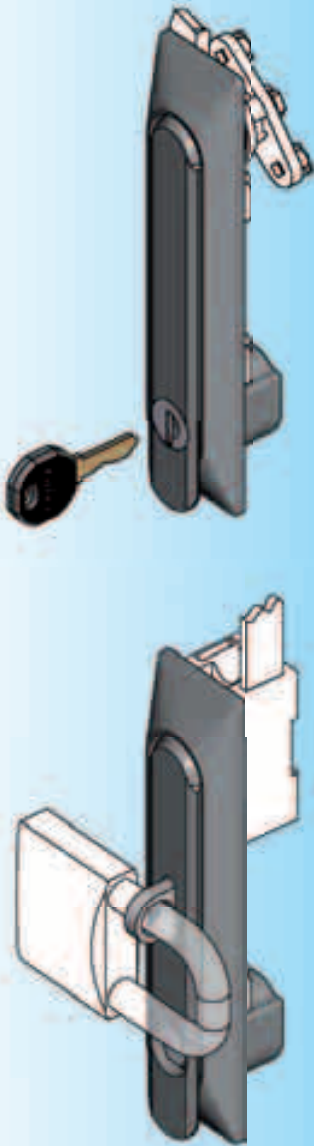
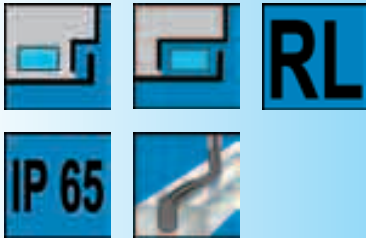
keyed EK 333	1150-U2-13
keyed different	1150-U4-13
Inserts: chrome plated zinc alloy	
Square 6 mm	1150-U9-13
Square 7 mm	1150-U10-13
Square 8 mm	1150-U11-13
Triangle 6.5 mm CNOMO	1150-U31-13
Triangle 7 mm	1150-U12-13
Triangle 8 mm	1150-U13-13
Double bit 3 mm	1150-U14-13
Double bit 5 mm	1150-U15-13
Daimler Benz	1150-U16-13
Slot 2 mm wide x 4 mm deep	1150-U17-13
Hexagon 8 mm female with pin	1150-U18-13
Male hexagon 11 mm	1150-U19-13
Push button	1150-U20-13

Related parts see page:

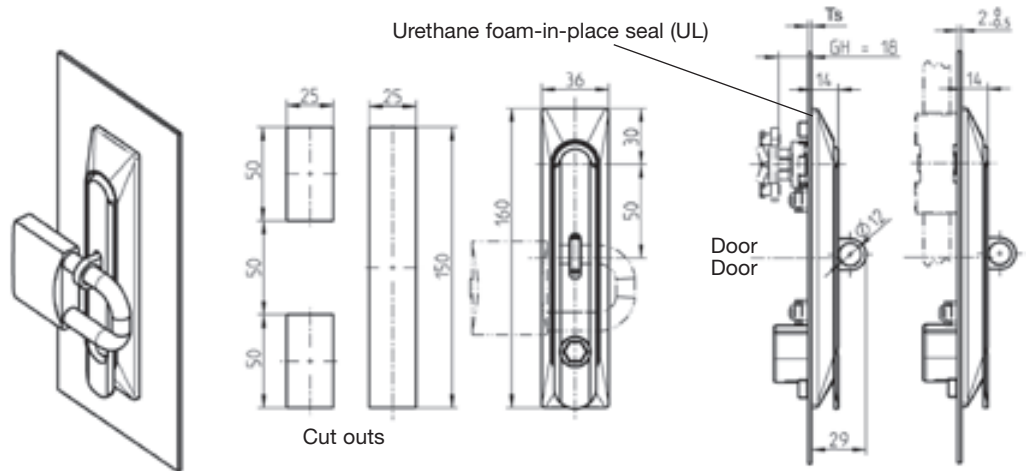
- Cams (GH = 18) 3YC-120
- Rod control 3YA-120
- 3YA-140
- Key 12B-120
- Operating tool 12B-140
- Installation hardware page 10

Other options:

- Key retained in the unlocked position
- Other inserts
- Blank handle (no lock)



Note:
Please order installation hardware separately, refer to page 10.



Swinghandle black powder coated zinc alloy handle, black GR nylon escutcheon, zinc alloy shaft with seal. Key cylinder has a stainless steel shutter and cap, one silver steel key is included with each keyed handle

		Push to lock	Push to lock for padlock
keyed EK 333	1150-U33-22	-	-
keyed different	1150-U34-22	-	-
Inserts: chrome plated zinc alloy			
Square 6 mm	1150-U36-22	1150-U36-30	1150-U36-31
Square 7 mm	1150-U37-22	1150-U37-30	1150-U37-31
Square 8 mm	1150-U38-22	1150-U38-30	1150-U38-31
Triangle 6.5 mm CNOMO	1150-U39-22	1150-U39-30	1150-U39-31
Triangle 7 mm	1150-U40-22	1150-U40-30	1150-U40-31
Triangle 8 mm	1150-U41-22	1150-U41-30	1150-U41-31
Double bit 3 mm	1150-U42-22	1150-U42-30	1150-U42-31
Double bit 5 mm	1150-U43-22	1150-U43-30	1150-U43-31
Daimler Benz	1150-U44-22	1150-U44-30	1150-U44-31
Slot 2 mm wide x 4 mm deep	1150-U35-22	1150-U35-30	1150-U35-31
Hexagon 8 mm female with pin	1150-U45-22	1150-U45-30	1150-U45-31
Male hexagon 11 mm	1150-U46-22	1150-U46-30	1150-U46-31

Related parts see page:

- Cams (GH = 18) 3YC-120
- Rod control 3YA-120
- 3YA-140
- Operating tool 12B-120
- Spare key 12B-140
- Installation hardware page 10

Other options:

- Key retained in the unlocked position
- Other inserts

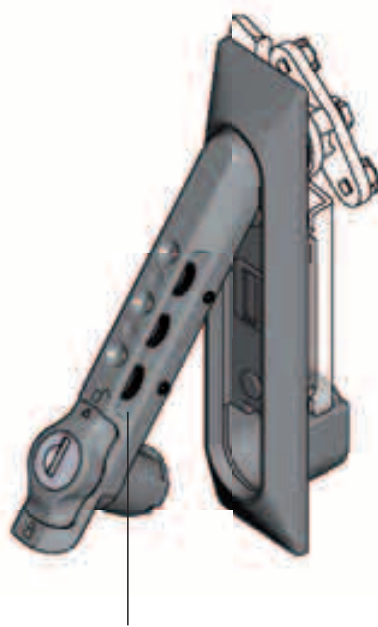
1155 Swinghandle - Combination Lock for Universal Escutcheon

PROGRAM 1150

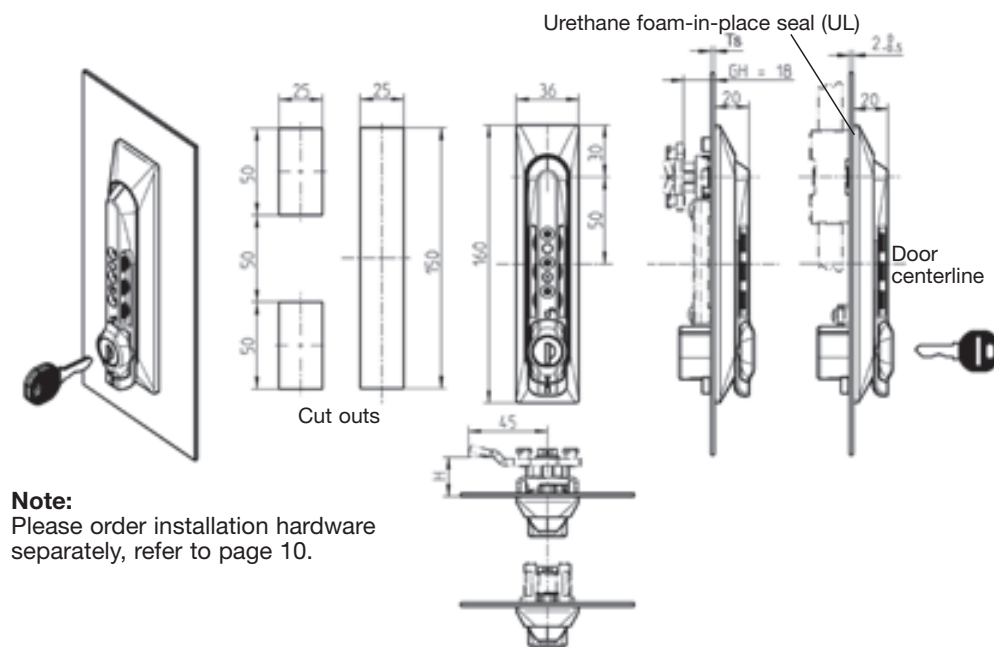
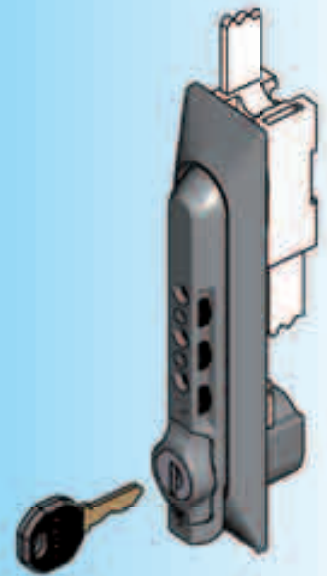
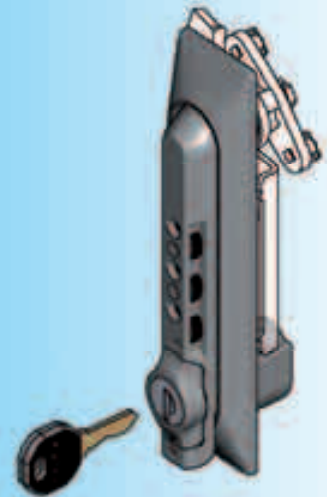
Swinghandle with combination lock and key override.
Single- or multi-point latching.



Option 1:
Release using round cylinder, operation as with usual swinghandles of program 1150. The combination lock remains untouched.



Option 2:
Release using combination lock and wing knob. The round cylinder remains locked. The arrow on the wing knob indicates the opened or closed position..



Note:
Please order installation hardware separately, refer to page 10.

Related parts see page:
 - Cams (GH = 18) 3YC-120
 - Rod control 3YA-120
 3YA-140
 - Operating tool 12B-140
 - Installation hardware page 10

Other options:
 - Key retained in the unlocked position
 - Other inserts

Handle and escutcheon in black GR nylon, shaft zinc plated zinc alloy, with seal, key cylinder has stainless steel cap and shutter. One silver steel key with nylon grip with each handle

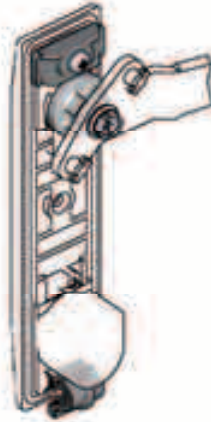
keyed EK 333	1155-U1-11
keyed different	1155-U2-11

PROGRAM 1150



Installation hardware for swinghandle with cam

IP 40

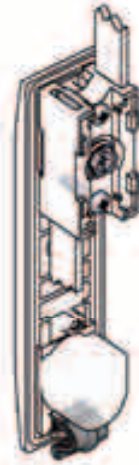


GR nylon hook and bridge bar, zinc plated zinc alloy adapter, other hardware zinc plated m.s.

Ts = 1.0 + 0.7 / - 0.0	1150-U50-01
Ts = 2.0 + 0.7 / - 0.0	1150-U50-02
Ts = 3.0 + 0.7 / - 0.0	1150-U50-03

Installation hardware for swinghandle with rod control

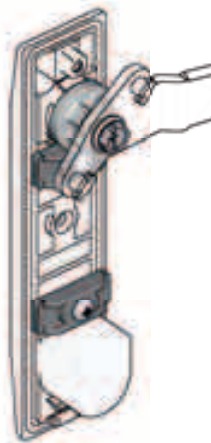
IP 40



Black nylon hook

Ts = 1.0	-
Ts = 2.0 + 0.0 / - 0.5	1150-U51-02
Ts = 3.0	-

IP 65



Black nylon bridge bar, zinc plated zinc alloy adapter, other hardware zinc plated m.s.

Ts = 1.0 to 3.0	1150-U52
-----------------	----------

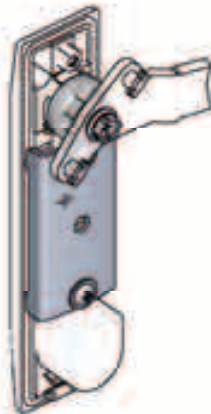
IP 65



Black nylon bridge bar, other hardware zinc plated m.s.

Ts = 2.0 + 0.0 / - 0.5	1150-U53
------------------------	----------

IP 65



Zinc plated zinc alloy adapter; zinc plated m.s. bracket and other hardware

Ts = 1.0 to 2.0	1150-U54
-----------------	----------

Note:
- Ts = Door thickness






Options:
- Swing handle with universal escutcheon page 6
thru page 9

Other options:
- For other door thicknesses consult EMKA
- Stainless installation hardware

Hinges, Gasketing and Accessories

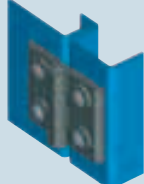


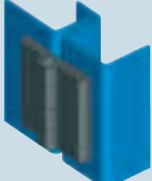

Hinges for surface mounted doors:

Refer to EMKA main catalog, chapter 4A

	for inline cabinets	
for various door returns		120° / 135° / 180° opening angles
	nylon, zinc alloy, mild or stainless steel	
for low cost installation	lift-off or captive	for cabinets with double doors




Hinges for flush doors:

Refer to EMKA main catalog, chapter 4B

integral studs		concealed hinge
	screw-on, weld-on, or clip-in	
180°, 270° opening angles		nylon, zinc alloy, steel or stainless steel
	2D or 3D adjustable	for low cost installation

Wide product range of gasketing and edge protection:

refer to EMKA main catalog, chapter 5

			
--	---	---	---

Cams, rod controls, rods and accessories:

Refer to EMKA main catalog



EMKA Subsidiaries



EMKA Beschlagteile Ges.m.b.H.
Intercity Park 4
A - 2421 Kittsee • Austria
Tel.: +43-2143-43063
Fax: +43-2143-43064
info@EMKA-beschlagteile.at • www.EMKA-beschlagteile.at



EMKA France SA
Route des Roches - B.P. 12
41400 Bourré • France
Tel.: +33/254/320862
Fax: +33/254/324598
EMKA@EMKA-france.com • www.EMKA-france.com



EMKA-Polska Sp. z o.o.
ul. Siemonska 11
42-503 Bedzin • Poland
Tel.: +48/32/3606026
Fax: +48/32/2633739
info@EMKA.net • www.EMKA.net



Belgium • EMKA Benelux B.V.
Marconiweg 2
5466 AS Veghel • Netherlands
Tel.: +31/413/323510
Fax: +31/413/354425
info@EMKA.org • www.EMKA.org



EMKA Hellas
47-49 Hatzikiakou Ave
185-38 Piraeus • Greece
Tel.: +30/21041/83000
Fax: +30/21041/83183
info@EMKA-hellas.com • www.EMKA-hellas.com



EMKA Ferragens Portuguesa Lda.
Rua Francisco Romero, 65
Amoreira
2645- 197 Alcabideche • Portugal
Tel.: +351/214663355
Fax: +351/214670475
mail@EMKA.pt • www.EMKA.pt



EMKA Bosnia d.o.o. Goražde
Ibrahima Popovica 32
73000 Goražde • Bosnia-Herzegovina
Tel.: +387/38/241310
Fax: +387/38/221474
info@EMKA.ba • www.EMKA.ba



EMKA Beschlagteile
Kereskedelmi Képviselet / Kresz Géza u. 51.
H-1132 Budapest • Hungary
Tel.: +36/1/2360032
Fax: +36/1/4510327
info@EMKA.hu • www.EMKA.hu



S. C. EMKA Beschlagteile S. R. L.
Alba Iulila 110
550052 Sibiu • Romania
Tel.: +40/269/222700
Fax: +40/369/303700
info@EMKA.ro • www.EMKA.ro



EMKA Industrial Hardware Co.Ltd.
No.15 Fuyuan Road
Wuqing Development Area
Tianjin, 301700 • China
Tel.: +86/22/82123759
Fax: +86/22/82127759
info@EMKA.cn • www.EMKA.cn



EMKA India Panel Accessories P Ltd.
No47 J.C. Industrial Estate / 8th Main, Kanakapura Road
Bangalore-560 062 • India
Tel.: +91/80/26660212
Fax: +91/80/26662706
s.venkat@EMKA.in • www.EMKA.in



Serbia • EMKA Okovi d.o.o.
Branimirova 64
HR-35000 Slavonski Brod • Croatia
Tel.: +385/35/270073
Fax: +385/35/410900
p.teglovic@emka-okovi.hr • www.emka-okovi.hr



EMKA Okovi d.o.o.
Branimirova 64
HR-35000 Slavonski Brod • Croatia
Tel.: +385/35/270073
Fax: +385/35/410900
p.teglovic@emka-okovi.hr • www.emka-okovi.hr



EMKA Italia S.r.l. Unipersonale
Via Isidora, 10
37017 Lazise (Verona) • Italy
Tel.: +39/045/6471070
Fax: +39/045/6471126
info@EMKA.it • www.EMKA.it



EMKA Kovánie
Máchova 47
82106 Bratislava • Slovakia
Tel.: +421/2/45259910
Fax: +421/2/45259910
miro.EMKA@ba.telecom.sk



CR • EMKA Kovánie/Beschlagteile für CR a
Máchova 47
82106 Bratislava • Slovakia
Tel.: +421/2/45259910
Fax: +421/2/45259910
miro.EMKA@ba.telecom.sk



Montenegro • EMKA Bosnia d.o.o. Goražde
Ibrahima Popovica 32
73000 Goražde • Bosnia-Herzegovina
Tel.: +387/38/241310
Fax: +387/38/221474
info@EMKA.ba • www.EMKA.ba



EMKA España S.A.
C/Físicas, 37
Polígono Industrial Urtinsa II
28925 Madrid Alcorcón • Spain
Tel.: +34/91/6432087
Fax: +34/91/6434207
mail@EMKA.es • www.EMKA.es




EMKA Benelux B.V.
Marconiweg 2
5466 AS Veghel • Netherlands
Tel.: +31/413/323510
Fax: +31/413/354425
info@EMKA.org • www.EMKA.org



EMKA Agencies

 Emil Krachten Scandinavia AB
Industrigatan 10
55302 Jönköping • Sweden
Tel.: +46/36/314130
Fax: +46/36/314131
info@EMKA.se • www.EMKA.se


 EMKA Beschlagteile AG
Kammistr. 5
3800 Interlaken • Switzerland
Tel.: +41/33/8260220
Fax: +41/33/8260229
info@EMKA.ch • www.EMKA.ch

 EMKA Kilit Sistemleri Metal San. ve Tic. Ltd. Sti.
Büyükbakkalköy Mahallesi Samandira Caddesi No:6/A
34858 Maltepe - Istanbul • Turkey
Tel.: +90/216/5617801
Fax: +90/216/5617803
info@emkakilid.com.tr • www.emkakilid.com.tr


 EMKA Middle East LLC
Member of the EMKA Group
P.O. Box 36293
Dubai - United Arab Emirates
Tel.: +971/42844528
Fax: +971/42844572
info@EMKA.ae • www.EMKA.ae


 EMKA (UK) Ltd.
Patricia House
Bodmin Road
Coventry CV2 5DG • United Kingdom
Tel.: +44/2476/616505
Fax: +44/2476/612837
enquiry@EMKA.co.uk • www.EMKA.co.uk

 EMKA Inc.
1961 Fulling Mill Road
Middletown PA 17057 • USA
Tel.: +1/717/9861111
Fax: +1/717/9861080
EMKA@emkausa.com
www.emkausa.com


 Lock Focus Pty. Ltd.
Victoria 3173 • Australia
Tel.: +61/3/97981322
locks@lockfocus.com.au

 UES (INT'L) PTY. LTD.
Bella Vista NSW 2153 • Australia
Tel.: +61/2/88871200
export@uesint.com

 Normont Industrial Hardware, Canada Ltd.
Laval (Québec) H7P 6A9 • Canada
Tel.: +1/450/6812884
EMKA@normont.com

 Comercializadora Becor S.A.
Bogota • Colombia
Tel.: +57/1/2350234
gerencia@becor.com

 A/S Megatrade Beslag
2650 Hvidovre • Denmark
Tel.: +45/44916700
mega@megatrade.dk

 Colly Components AB - Estonia
164 94 Kista • Sweden
Tel.: +46/8/7030100
customerccp@colly.se

 Oy Colly Company Ab
00391 Helsinki • Finland
Tel.: +358/29/006150
sales@colly.fi

 Teder Electro Mechanical
49277 Petach-Tikva • Israel
Tel.: +972/73/2331200
sales@teder.com

 TOCHIGIYA Co., LTD
101-0047 Saitama • Japan
Tel.: +81/48/2283072
support@tochigiya.co.jp


 Colly Components AB - Latvia
164 94 Kista • Sweden
Tel.: +46/8/7030100
customerccp@colly.se

 Colly Components AB - Lithuania
164 94 Kista • Sweden
Tel.: +46/8/7030100
customerccp@colly.se

 Colly AS
1314 Vöyenga • Norway
Tel.: +40/21/2329502
dragos.butoi@dcb.ro

 OOO"MK-Electro
196128 St.-Petersburg • Russia
Tel.: +7/81/24492928
info@mk-electro.ru

 VF Fastening Systems PTE Ltd.
757695 Singapore • Singapore
Tel.: +65/675/2333
vincent@vffastening.com.sg

 Enclosure Solutions
Benoni • South Africa
Tel.: +27/11/4212675
info@enclosuresolutions.co.za

 Geo Jeon Co. Ltd.
429-450 Kyoung Gi Do • South Korea
Tel.: +82/314/335508
koreaemka@naver.com

 Colly Components AB
164 94 Kista • Sweden
Tel.: +46/8/7030100
customerccp@colly.se

 Best Port Company Ltd.
429-450 Kyoung Gi Do • Thailand
Tel.: +66/2/993/5739
bestport@samartas.com

 Terramar Engineering and Machinery (Pte.) Ltd.
Tan Binh District, Ho Chi Minh City • Vietnam
Tel.: +84/8/9974089
cam@terramar.com

