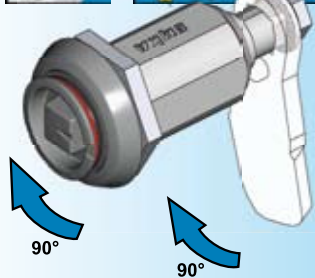


#### Vibration proof

These latches are designed to be vibration resistant with a distinct "over-center" action. There may be some cases of extreme vibration where this detent is overcome. Therefore we recommend rigorous testing.

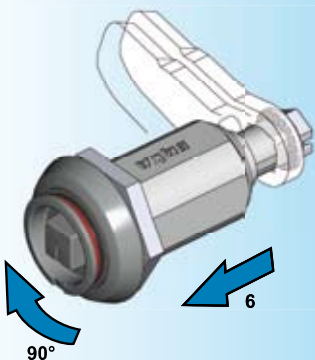
Using this compression latch in conjunction with the dust cap (catalogue page 1C-330) offers a further safety aspect to indicate the open status of the latch:

Additionally if the red ring is visible, the dust cap can not be locked.



#### Open condition

The first 90° of rotation of the insert also turns the cam 90°.



#### Closed position

The second 90° of rotation of the insert draws the cam toward the door 6 mm axially.



#### Compressed condition

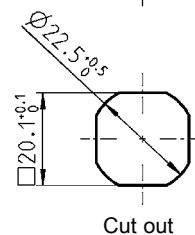
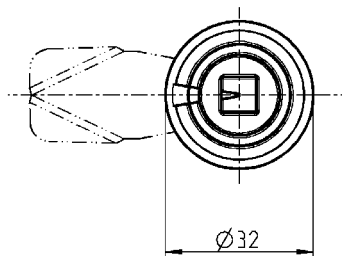
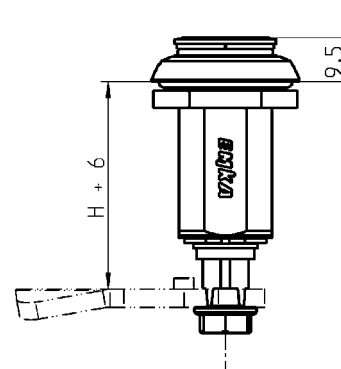
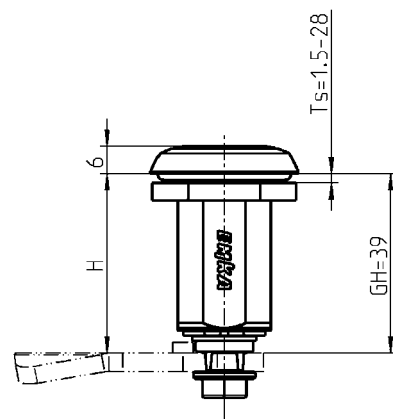
**Unlock:**  
Reversed rotation

#### Further parts see page

- Cam (GH = 40) 1C-120
- Attention:** when using this cam the dimension H will be reduced by 1 mm
- Accessories from 1C-320
- Escutcheon 3B-140
- Key 12B-120

Compressed condition

Open condition



Cut out

Housing and insert zinc die, surface of your choice, signal-ring red, nut and screw m.s. zinc plated, with spring and seal

	black powder coated	chrome plated
Square 8	1000-U846	1000-U846-IA
Double bit 5	1000-U847	1000-U847-IA
Railway	1000-U848	1000-U848-IA