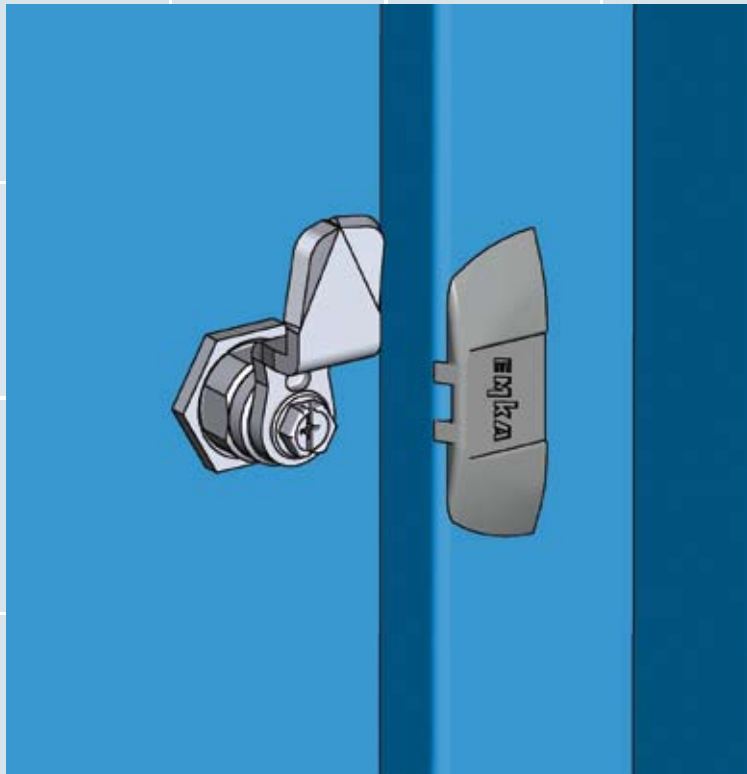
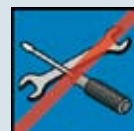
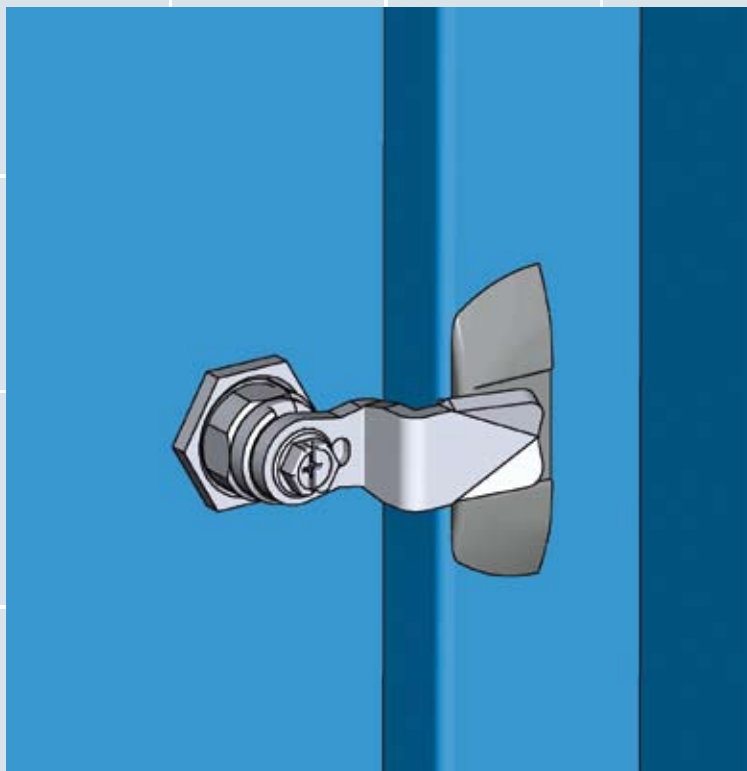


# Frame-sided leading ramp for cams



Design example

Easy to install



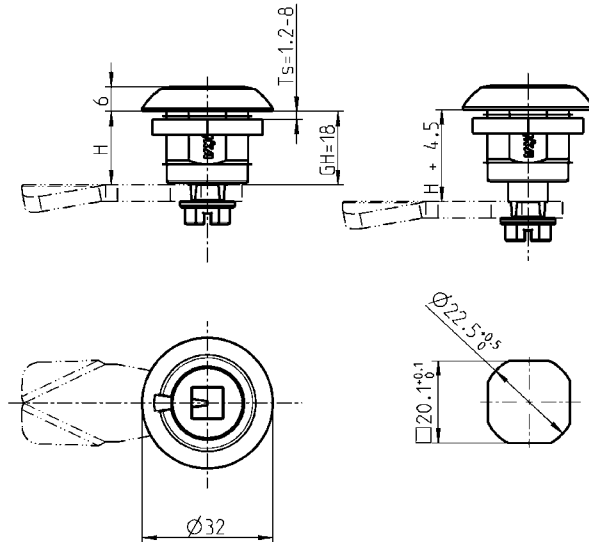
Higher  
compression

# Compression latch

## PROGRAM 1000

### Vibration proof

These latches are designed to be vibration resistant with a distinct "over-center" action. Applications with extreme vibration may require additional testing.



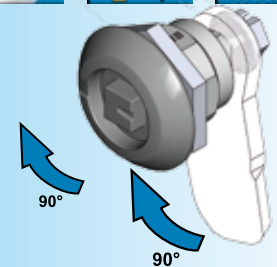
Housing and insert: black powder coated, zinc alloy, nut and screw: zinc plated m.s.

|                                  | black powder coated | chrome plated |
|----------------------------------|---------------------|---------------|
| Square 6                         | on request          | on request    |
| Square 7                         | on request          | on request    |
| Square 8                         | on request          | on request    |
| Square 8mm with arrow            | 1000-U852           | on request    |
| Triangular 6,5 CNOMO             | on request          | on request    |
| Triangular 7                     | on request          | on request    |
| Triangular 8                     | 1000-U853           | on request    |
| Triangular 9                     | on request          | on request    |
| Triangular 10                    | on request          | on request    |
| Double bit 3                     | 1000-U854           | on request    |
| Double bit 5                     | 1000-U855           | on request    |
| Male hexagon 11mm with indicator | on request          | on request    |
| Hexagon female 8mm               | on request          | on request    |
| Hexagon female 8mm with pin      | on request          | on request    |
| Hexagon female 10mm              | on request          | on request    |
| Square female 6mm                | on request          | on request    |
| Square female 7                  | on request          | on request    |
| Square female 8                  | on request          | on request    |
| Daimler Benz                     | on request          | on request    |
| Slot 1,2 x 3                     | on request          | on request    |
| Slot 2 x 4                       | on request          | on request    |
| Slot 2 x 4 coinproof             | on request          | on request    |
| Crown type                       | on request          | on request    |
| Railway                          | 1000-U856           | on request    |
| Tube with indicator              | on request          | on request    |

See general catalog 2011 for page references you can't find in the ECHO (e.g. 1B-105).

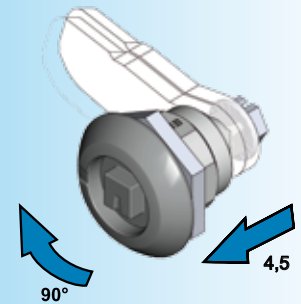
© EMKA Beschlagteile GmbH & Co. KG 2012

## Beschlagteile



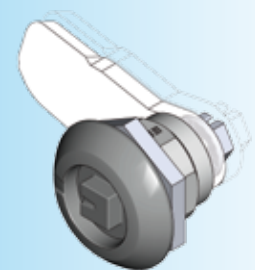
### Open condition

The first 90° of rotation of the insert also turns the cam 90°.



### Closed position

The second 90° of rotation of the insert draws the cam toward the door 4,5 mm axially.



### Compressed condition

**Unlock:**  
Reversed rotation

**Note:**  
Only cams without a stop can be used.

### Further parts see page

- Cam on request
- Accessories from 1C-320
- Escutcheon 3B-140
- Key 12B-120