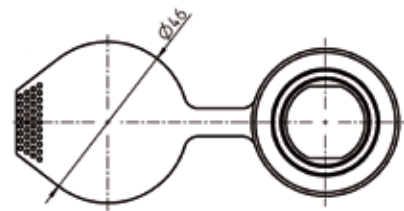
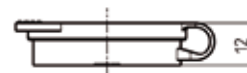
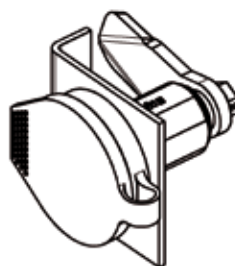
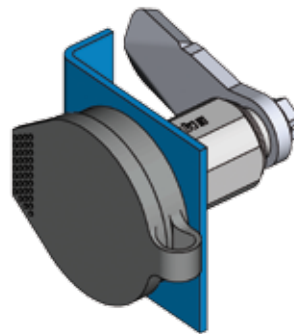
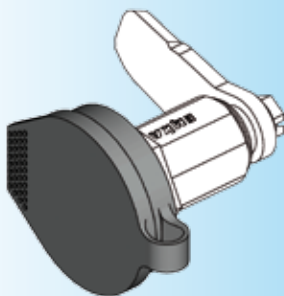
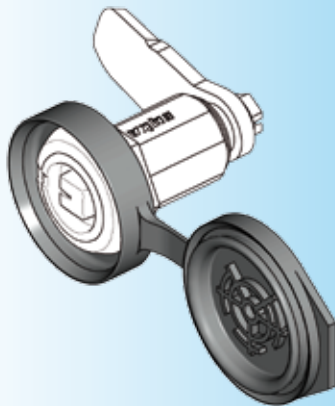
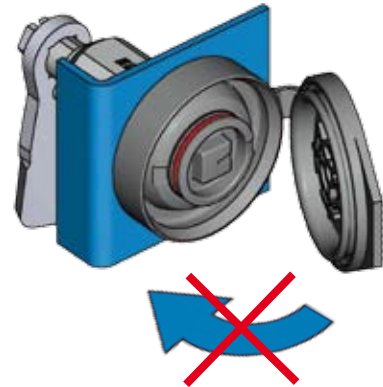




In case of combined dust cap and compression quarter turn with optical indication open (program 1000 / catalogue page 1B-237) additional safety aspect possible.

Additionally to the red ring visible, the dust cap can not be locked.



**Note**

The dust cap was tested successfully by the Technical University of Dresden in respect of high-speed resistant class up to 450 km/h.

**Attention:**

The H-dimension will be reduced by 2 mm with this dust cap installed.

**Further parts see page**

- Quarter turns 1B-120
- up to 1B-222
- 1B-235
- up to 1B-335
- 1B-360
- 1B-420
- 1B-840
- 1B-860

Dust cap TPE, UV resistant , black

1000-97-02