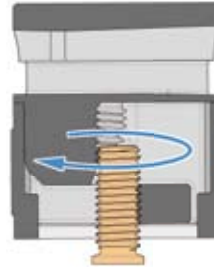
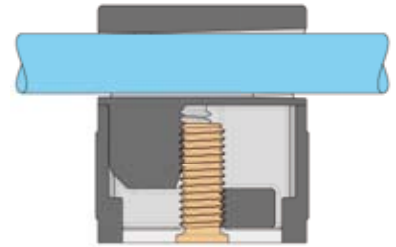


1. Attachment of rod guide on the weld stud

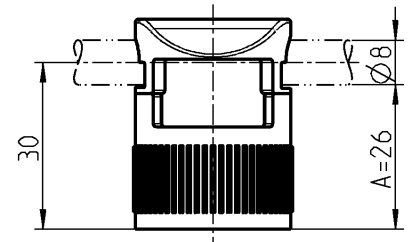
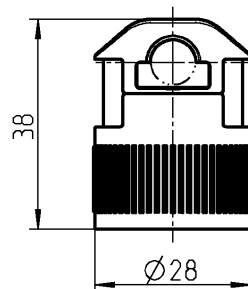
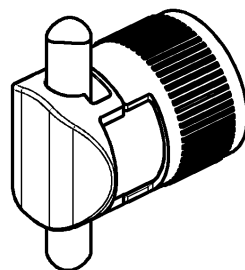
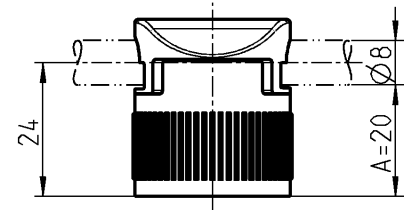
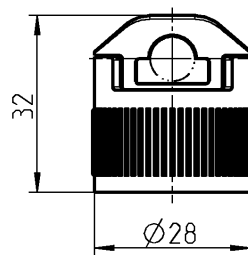
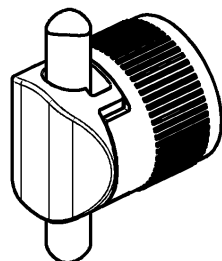


2. Tighten rod guide on the weld stud



3. Rod guide pre-assembled stud

+ ADVANTAGE
The clip-in type rod guide can even be mounted on powder coated weld studs giving a high pull-off force.



Note:
Rod guide designed for use with both A=20 and A=26

Further parts see page
Program 1107, 1125, 1150,
1180, 1225, 1325, 2100, 3000
– Rods 3ZB-120

Rod guide polyamide GF black

| A | for weld stud |
|----|---------------|
| 20 | M6x16 |
| 26 | M6x20 |

1001-U47