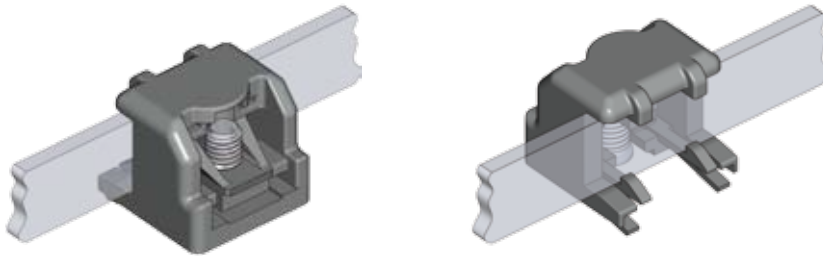


Rod guide clip-in type for flat rods 3x14

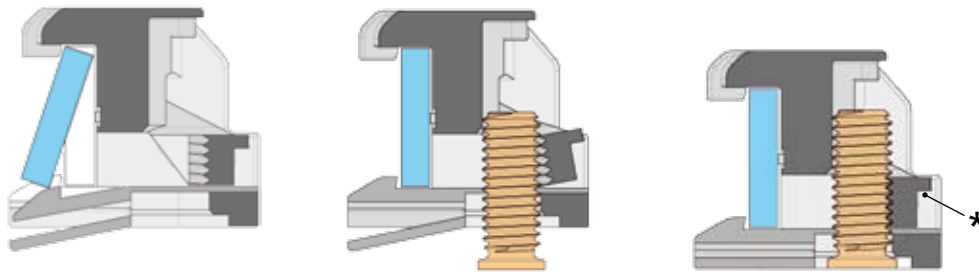
PROGRAM 1107 - 3000

Pull-out force: $F_{min} = > 1000 \text{ N}$ (calculated)
 Application force: Typical factor $F = \text{very low}$ (Basic Prototype)

These values refer to threads with degreased surface.



Flat rod and weld stud pictured transparent



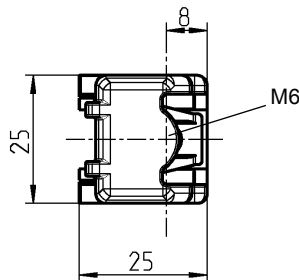
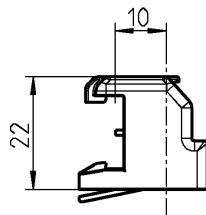
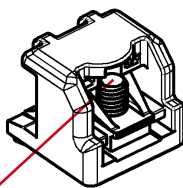
1. Assembling of flat rod into rod guide

2. Rod guide can be pre-assembled on rod

3. Rod guide pre-assembled

* Strap has to be elevated at disassembly

+ ADVANTAGE
 The clip-in type rod guide can even be mounted on powder coated weld studs granting a high pull-off force.



Rod guide clip-in type polyamide VO black for weld stud M6x16 or M6x20

1121-135

See general catalog 2011 for page references you can't find in the ECHO (e.g. 1B-105).

© EMKA Beschlagteile GmbH & Co. KG 2012

Beschlagteile



Further parts see page

Program 1107
 – Rods 3ZB-320

Program 1125
 – Rods up to 3ZA-120
 3ZA-340
 3ZB-120
 3ZB-220
 3ZB-420
 3ZB-440

Program 1150
 – Rods up to 3ZA-120
 3ZA-340
 3ZB-120
 3ZB-220
 3ZB-520
 3ZB-540

Program 1160
 – Rods up to 3ZA-120
 3ZA-420
 3ZB-120
 3ZB-220

Program 1180
 – Rods up to 3ZA-120
 3ZA-340
 3ZA-520
 3ZB-120
 3ZB-220
 3ZB-620

Program 1190
 – Rods up to 3ZA-120
 3ZA-340

Program 1225
 – Rods up to 3ZA-120
 3ZA-340
 3ZB-120
 3ZB-220
 3ZB-420
 3ZB-720

Program 2100
 – Rods up to 3ZA-120
 3ZA-340
 3ZB-120
 3ZB-220
 3ZB-820

Program 2300
 – Rods 3ZA-620
 3ZB-120
 3ZB-220

Program 2400
 – Rods 3ZA-720
 3ZA-820

Program 2600
 – Rods 3ZA-920

Program 3000
 – Rods up to 3ZA-120
 3ZA-340
 3ZB-120
 3ZB-220