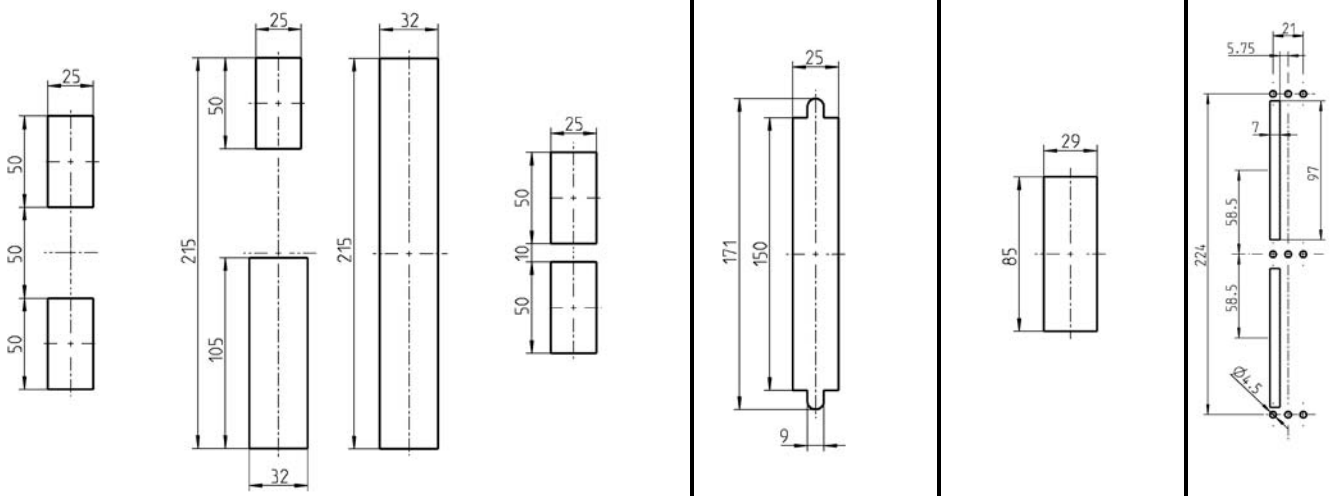
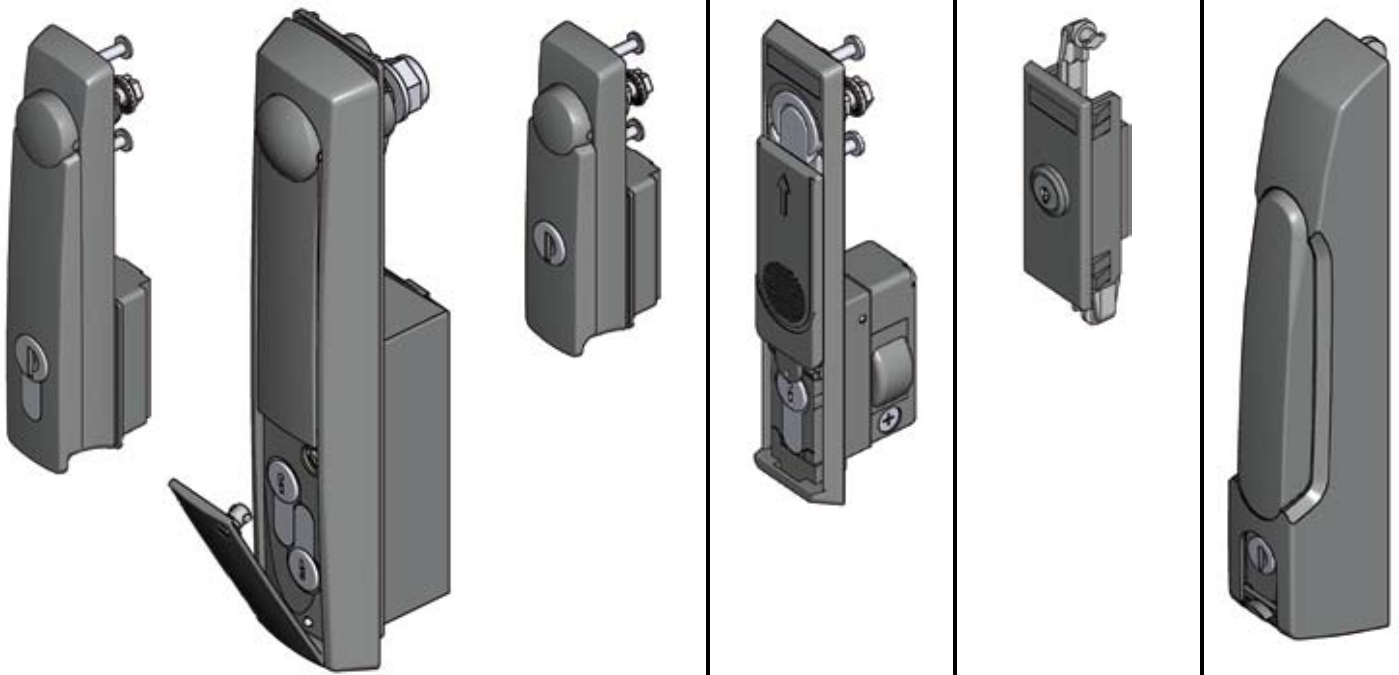


Swinghandles, lift handles, and escutcheons, part 3

1225	1225	1225	2100	2300	2400
Swinghandle	Double cylinder-Swinghandle	Swinghandle	Swinghandle	Escutcheon	Swinghandle
3G-100	3G-100	3G-100	3H-100	3J-100	3K-100

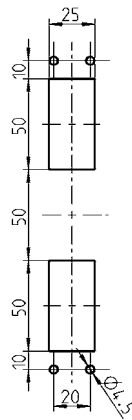
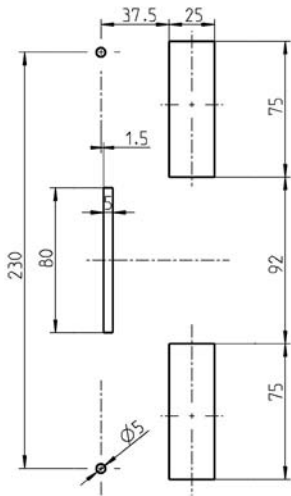
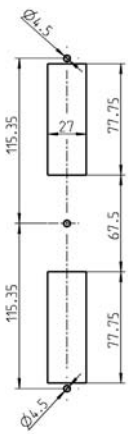


•	•	•	•	•	•
•			•	•	•
IP 40/IP 65	IP 65	IP 65	IP 54	IP 40	IP 40
•			•	•	•
•	•	•	•	•	•
•			•		•
•			•		•
•		•	•	•	•
•	•		•		•
•			•		•
•			•		•

2400 Escutcheon	2600 Swinghandle	3000 Swinghandle	
3K-100	3L-100	3N-100	

Beschlagteile

see page



Please see previous page for first part. Survey of further products.

			●
			●
●	●		●
IP 40	IP 54		IP 42
●	●		
●	●		
●	●		
●	●		●
●	●		
●	●		
●	●		●

- Assembling inside the gasketing
- Outside the gasketing
- Protection: IP
- Unlocked with insert
- Unlocked with round cylinder
- Unlocked with profile half cylinder
- Unlocked electronically
- Unlocked without key
- Modular locking
- Handle and escutcheon polyamide
- Handle zinc die and escutcheon polyamide
- Handle and escutcheon zinc die
- Handle and escutcheon stainless steel
- Fitting escutcheons