

# Product Brochure



**kapella**<sup>®</sup>



# Whatever your Chute requirements, Kapella Chutes UK are the number one choice.

As well as making life easier, a Kapella Chute effortlessly transfers items in a single drop, providing increased cost efficiencies to your business and delivering noticeable benefits over the lifespan of the building.

Designed to be durable, easy to use, and cost effective a Kapella Chute is a necessary modern amenity.

Kapella Chutes UK are an award winning, highly competitive company with a market leading reputation based in Manchester.

Operating Nationwide and supplying worldwide we guarantee our fully trained Engineers provide an unbeatable service as well as supplying and installing the highest quality Laundry Chutes and Waste Chutes available today.

We offer full project management, from consultation through to professional installation and after care.



*Designed to be durable, easy to use and cost effective, a Kapella Chute is a necessary modern amenity.*



**Cost effective and value for money**



**Safe and easy to use**



**Time and space efficient**



**Eliminates cross contamination**

# Contents

Refuse Chutes

PAGE 4

Linen Chutes

PAGE 6

Recycling Chutes

PAGE 8

## Why Choose Kapella?

Kapella Chutes UK are one of the UK's leading commercial laundry chute and refuse chute suppliers with an extensive history in the supply and installation of linen and waste chute solutions. We are the preferred choice of supplier for a number of blue chip clients, servicing the needs of hospitals, care homes, hotels, high rise residential properties and bespoke commercial environments.



# Refuse Chutes

Refuse chutes solve the disposal problem of waste generated from residential and commercial buildings.

Kapalla chutes enhance the quality of life and are designed as a group of interconnected systems that are easy to use, secure and clean.



## Brush Cleaning System

The cleaning system consists of a cylindrical housing, with two bands of stiff nylon brushes, firmly attached, a geared electric motor, cable, stabilizing weight, flushing head spray and the manufacturer's standard electric logic control installed to ensure efficient cleaning of the internal surfaces of the chute.

Brush unit often operates together with the sanitizing unit and the flushing system for proper cleaning of the chutes. Trash chutes need to be cleaned periodically by the brush cleaning system while duct cleaning should be performed every two to five years.

The avoidance of necessary maintenance may result in serious health effects such as cold, allergies and watery eyes.



## Keyed Access / Maintenance Door

The inspection Access Door is situated on the top floor, kept above the hopper door. The keyed handle Fire Rated Door is shaped from Stainless Steel leaf.

Self-latching keyed handle enables easy operation. Available with 450x450mm clear opening and 600x600mm clear opening. The door is used for refilling and inspection of the components of the cleaning system.



## Chute Support Frames

Hot Dip Galvanized Chute Support Frames are fixed around to chute and bolted to SSL and to wall by 4 Nos Rawl plugs. The wing is shaped from 5mm Mild Steel and welded to 50x50x5mm angle bars.

The interior of the rings are covered with 3mm anti vibration rubber pad as a sound isolator and protects the chute from corrosion. The frames are fixed to slab at each floor.



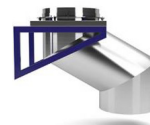
## Chute Duct

Chute Duct extends from the garbage collection room to the top floor where the highest intake is located. The tubes are continuously TIG welded which ensures watertight system without any bolts, rivets or other projections inside the chute.



## Chute Intake

Chute intakes are designed to fix the hopper doors for proper disposal of the trash bags. The intake sections are continuously welded, rectified inside and sealed externally with mastic to be free from obstructions.



## Offset

The stainless steel sheets are continuously welded chute offset is a 45° angled discharge unit reinforced and separately supported at the area of impact.

## Clamp Rings

Stainless Steel clamp rings are fixed to the exterior of the chute to join bell-mouth tubes, in order to make chutes smoke proof.



## Bi-Sorter/Tri-sorter

Electro-Hydraulic motorized systems for distributing materials from one chute into designed containers operated by the push button controls at intake doors.



## Fire Shutter Door

Galvanized or stainless steel fire shutter doors are required to provide 1 1/2h fire rated assemblies held open by fusible link for automatic closing with heat rising above 72° C.



## Control Panel

The master control panel is located at the garbage collection room and includes necessary switches, relays, lights for the operation of the chute accessories such as automatic sanitizing system, exhaust fan, brushing unit and interlocking doors.

The control panel is interconnected with the fire and smoke alarm system in order to lock the chute in case of fire.

- 1 Ventilation
- 2 Brush Cleaning System
- 3 Keyed Access/Maintenance Door
- 4 Sprinklers for Fire Security and Flushing System
- 5 Chute Support Frames
- 6 Sanitizing Unit
- 7 Fire Rated Intellocking Doors
- 8 Clamp Rings

- 9 Chute Duct
- 10 Chute Intake
- 11 Offset
- 12 Bi-Sorter/Tri-sorter
- 13 Fire Shutter Door
- 14 Control Panel
- 15 HDG/HDPE Trolleys



### Fire Rated Intellocking Doors

The standards are improved with a solid, mono-block stainless steel surface with its specially designed gas pistons enabling easier and safer operation. The electromagnetic interlocking with led indicator lamps enables one user at a time and automatically locks all doors during the maintenance.

Fire Rated doors outstands not only with its design and operational use, but also its durability since the complete body of the door is shaped from 1.5mm Stainless Steel Sheet, including its latch, indicator lamps and handle are made out of stainless steel.



### Ventilation

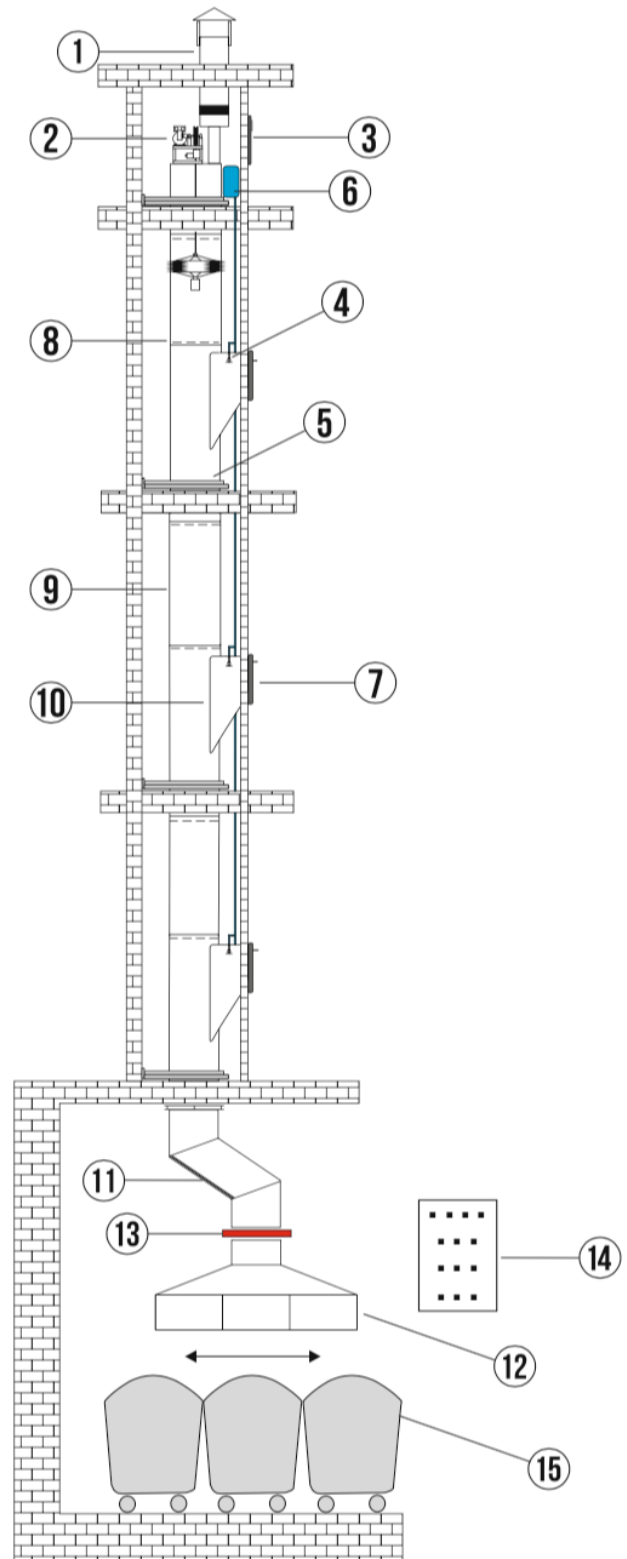
Trash chute vent and exhaust fan play a major role in inhibiting unwanted smell in your building. Kapella recommends a minimum of 10ACH in the chute and applies its system worldwide accordingly. NFPA 82 specifies that trash chutes should be ventilated.

In addition ASHRAE 62.1 2007 standard specifies minimum minimum exhaust rate for trash rooms as minimum 1cfm/ft<sup>2</sup>. The vent unit is shaped from stainless steel parts such as



### HDG/HDPE Trolleys

The Hot Dip Galvanized Wheelie Trolleys are welded with inert-gas technology. Their lifting arms and carrying rollers are manufactured in compliance with EN standards.





# Linen Chutes

Linen chutes are to solve disposal problem of laundry from residential and commercial buildings.

Kapella linen chutes are designed as a group of interconnected systems that are easy to use, secure and clean.



## Sprinklers for Fire Security and Flushing System

### A. Fire Security

The fire sprinklers are mandatory for the security of the systems. Fire sprinklers are provided at each floor and a fire cut off door at the bottom of the chute for fire security. The chute system can interconnect with the BMS fire alarm system that locks the system in the case of fire.

### B. Flushing System

A solenoid valve will determine (along with the Disinfectant & Sanitizing Unit) the water flow through all cleaning sprinklers (at each floor) to wash the garbage chute along with the disinfectant liquid located at top floor. The hopper doors are closed during cleaning process. The disinfectant injects into the water comes in cycle through Solenoid, Riser and Sprinkler head, then water stop automatically and release the door locks.



## Keyed Access / Maintenance Door

The inspection Access Door is situated on the top floor, kept above the hopper door. The keyed handle Fire Rated Door is shaped from Stainless Steel leaf.

Self-latching keyed handle enables easy operation. Available with 450x450mm clear opening and 600x600mm clear opening. The door is used for refilling and inspection of the components of the cleaning system.



## Chute Support Frames

Hot Dip Galvanized Chute Support Frames are fixed around to chute and bolted to SSL and to wall by 4 Nos Rawl plugs. The wing is shaped from 5mm Mild Steel and welded to 50x50x5mm angle bars.

The interior of the rings are covered with 3mm anti vibration rubber pad as a sound isolator and protects the chute from corrosion. The frames are fixed to slab at each floor.



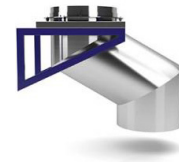
### Clamp Rings

Stainless Steel clamp rings are fixed to the exterior of the chute to join bell-mouth tubes, in order to make chutes smoke proof.



### Chute Duct

Chute Duct extends from the garbage collection room to the top floor where the highest intake is located. The tubes are continuously TIG welded which ensures watertight system without any bolts, rivets or other projections inside the chute.



### Chute Intake

Chute intakes are designed to fix the hopper doors for proper disposal of the trash bags. The intake sections are continuously welded, rectified inside and sealed externally with mastic to be free from obstructions.

### Offset

The stainless steel sheets are continuously welded chute offset is a 45° angled discharge unit reinforced and separately supported at the area of impact.



### Fire Rated Interlocking Doors

The standards are improved with a solid, mono-block stainless steel surface with its specially designed gas pistons enabling easier and safer operation. The electromagnetic interlocking with led indicator lamps enables one user at a time and automatically locks all doors during the maintenance.

Fire Rated doors outstands not only with its design and operational use, but also its durability since the complete body of the door is shaped from 1.5mm Stainless Steel Sheet, including its latch, indicator lamps and handle are made out of stainless steel.



### Ventilation

Trash chute vent and exhaust fan play a major role in inhibiting unwanted smell in your building. Kapella recommends a minimum of 10ACH in the chute and applies its system worldwide accordingly. NFPA 82 specifies that trash chutes should be ventilated.

In addition ASHRAE 62.1 2007 standard specifies minimum minimum exhaust rate for trash rooms as minimum 1cfm/ft2. The vent unit is shaped from stainless steel parts such as weather proof cap, insect screen and vent duct.



### Control Panel

The master control panel is located at the garbage collection room and includes necessary switches, relays, lights for the operation of the chute accessories such as automatic sanitizing system, exhaust fan, brushing unit and interlocking doors.

The control panel is interconnected with the fire and smoke alarm system in order to lock the



### Linen Trolleys

The stainless steel Linen Trolleys are welded smoothly without projections and polished. The standard diameter of the trolley is 800mm.

There are three swivel wheels, two of the with breaks designed for easy transfer of the laundries. Removable fabric is fire repellent.



### Fire Shutter Door

Galvanized or stainless steel fire shutter doors are required to provide 1 1/2h fire rated assemblies held open by fusible link for automatic closing with heat rising above 72° C.heat rising above 72° C.



# Recycling Chutes

Smart, self-sufficient buildings are the future of construction industry. Kapella actively encourages environmental benefits of recycling chutes by developing multi-sorter PLC systems that are adaptable to future technology. The customizable touchscreen doors enable collection of recyclables separately.



## Multi-sorter

The 360° rotating chute separator system is operated by an engine. The unit will position according to the predefined waste types and trolleys.

### SEPERATOR SYSTEM

- 300 kg Loading Capacity
- Epicyclical Gear
- 360 Degree Adjustable Control
- Special angle positioning for washing repositions from 0 degree when the system is restarted
- Simple Configuration from Control Panel

**Sorts for different numbers of containers**



## Brush Cleaning System

Patented Self-Automated Cleaning System is innovated to clean the total vertical length of the internal surfaces of Kapella chutes. This automatically operated system is factory fabricated as an integral unit, ready for immediate on-site connection. A cylindrical housing, with replaceable brushes, is automatically lowered and raised on a high geared winch which has a ratchet to give operator safety. The water supply to the flushing head spray is automatically provided by a conveniently placed gate valve.

- Wireless, fully automatic
- 300 Metre Long Washing Capacity
- Adjustable Operation Speed
- Integrated Disinfectant Tank

Fully automatic wireless cleaning system is activated from the operator panel. As cleaning starts, all doors lock and "busy" indicator led lamps.

With its fully integrated disinfectant tank on top of the brush, the sanitizing chemicals are sprayed to the tube surface equally. The brush not only makes vertical moves, but also spins around with 10 nw pressure to internal surface. The operator panel indicates the progress and position of the cleaning system instantaneously.

As soon as the cleaning is completed, the system is automatically restarted and doors can be used. The schedule of the cleaning system is set and changed from the operator panel.

The separator system is automatically positions to the draining channel. All jet sprays at floors simultaneously washes the chute after the brush cleaning by tap water.

## Smart Control Panel

The master control panel is located at the garbage collection room and operated by a touchscreen panel for necessary control and configuration of the chute accessories such as automatic sanitizing system, exhaust fan, brushing unit and interlocking doors.

The control panel is interconnected with the fire and smoke alarm system in order to lock the chute in case of fire.





**NCD Ltd t/as Kapella Chutes UK**

Apex House Reception | Duke Avenue | Cheadle | Cheshire | SK8 6RX | UK

📞 07787 178 750 | ✉️ [neil@kapellachutes.uk](mailto:neil@kapellachutes.uk) | 🌐 [www.kapellachutes.uk](http://www.kapellachutes.uk)

