

# THE BEST MONITOR ARMS ON EVERY LEVEL

---



Work Better. Feel Better.™

**Fellowes**

# WE ARE FELLOWES

For more than 100 years, Fellowes® has been helping people be the best they can be while at work. **More productive. More efficient. Happier. Healthier.**

## What we stand for.

We are the Fellowes family. We believe the workspace should be an optimal environment for a personal pursuit of meaningful work. We are bonded by a century long commitment to creating workspace solutions that communicate care and respect, and we believe that with the right tools, everyone has the ability to fully harness their potential.

**Everything that carries the Fellowes name is a promise of quality, performance, innovation and outstanding customer service.**

## Discover a healthier workspace.

Only Fellowes offers comprehensive solutions to support holistic wellbeing with innovative designs that blend function, efficiency and aesthetics for effortless integration into the working day.

## Helping people achieve their best.

At Fellowes, we are committed to providing workspace solutions that are intuitive, high quality, ergonomic, and dynamic, enabling you to be the best that you can be. Work better. Feel better.

## More productive.

**Fellowes is committed to making your workstation more dynamic, comfortable and effortlessly productive.**

## More efficient.

**Our products encourage efficiency and seamlessly integrate into your workspace.**

## Happier.

**Be the best you can be. Our products enable you to go beyond just working better.**

## Healthier.

**We believe that office equipment should do more than improve your performance; it should improve your health.**

# RAISE YOUR VIEW FOR A HEALTHY OUTLOOK

Using a monitor arm means that you can set your screen to be the exact height and angle to improve your health when working. Whether sitting or standing whilst using a computer, it will improve your ergonomic posture by preventing leaning forward or tilting the head, to avoid back, neck and eye strain.

With ever shrinking office space, using a monitor arm also means you can free up valuable workspace. Maximise your work environment and in-line desk area through elevating your screen with clear space underneath, to become more organised and productive. In addition research shows that introducing a second monitor can increase productivity further, by up to 30%\* and reduce errors up to 33%!\*\*

Fellowes 100-year wealth of research and product development in the office workspace has engineered a monitor arm and accessories range, designed to allow effortless adjustment for full workspace flexibility, with configurations and added features to suit all individual work styles.

## HOW TO CHOOSE?

Fellowes knows that your workspace needs to work for you. The extensive range of monitor arms and accessories we have developed means there is a solution for everyone. Finding the right specification for you is easy, just follow our simple 3-step guide to identify the most appropriate solution...



### WHY USE A MONITOR ARM?

- Easily adjust your monitors to the exact height, angle and distance to reduce strain on your neck, back and eyes
- Maximise your workspace and increase productivity
- Ideal for screen sharing or where one desk is used by multiple users

### 1. NUMBER OF SCREENS



Single



Dual vertical  
or horizontal



Triple



Laptop Arm  
Accessories

### 2. MOUNTING OPTION



Clamp or Grommet

Provides extra security and frees up vital desk space



Free Standing

Simple to set up and easy to move around



Wall Mounted

Perfect solution for meeting rooms or where desk space is limited

### 3. LEVEL OF MOVEMENT



Pole Mount

Allows you to choose a height setting and fix it in place



Gas Spring

Offers unlimited effortless adjustment

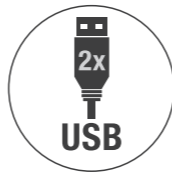
\*<http://www.nytimes.com/2006/04/20/technology/the-virtues-of-a-second-screen.html>

\*\*"Productivity, screens and aspect ratios", University of Utah, 2007 <https://collections.lib.utah.edu/details?id=214166>

# UNDERSTANDING SPECIFICATIONS

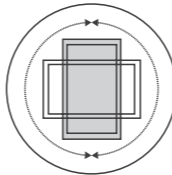
## USB CONNECTIVITY

Work seamlessly with all your devices whilst remaining constantly connected with conveniently integrated USB ports.



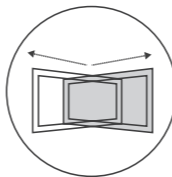
## ROTATION

Flexibility to rotate your monitor upto 360° and view your screen in either a landscape or portrait position.



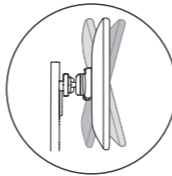
## PAN

Adjusting the monitor pan by angling the screen either inwards or outwards, allows you to easily achieve the correct position in front of you and reduce eyestrain. Especially useful where you are working with multiple screens.



## TILT

Adjusting the monitor tilt upwards or downwards allows you to easily achieve the optimum angle of your screen for improved posture and decreased tension in your neck.



## FIRA COMPLIANCE

FIRA International are an independent Ergonomic Accreditor. This logo signifies that the relevant product complies with EU Health and Safety Legislation: BS EN ISO 9241 Ergonomic requirements for office work with visual display terminals (VDT's): Part 5: 1999, workstation layout and postural requirements.

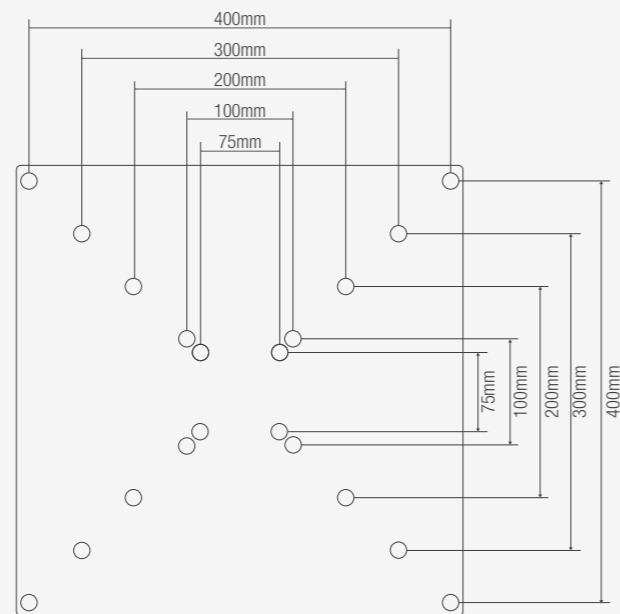


## VESA COMPLIANCE

Most monitors have a VESA hole pattern on the back of the screen. VESA stands for Video Electronic Standard Association and is the industry benchmark used by worldwide manufactures of flat screen monitors.

On these VESA compliant screens you will find a square or a rectangle shaped group of 4 attachment holes, on the backside of the screen (such as one of the patterns illustrated in the diagram pictured).

Fellowes mounting solutions are all designed to fit these various VESA standards.



# TALLO™ & TALLO MODULAR™ MONITOR ARMS

Our most sophisticated range of monitor arms, expertly crafted to perform effortlessly.

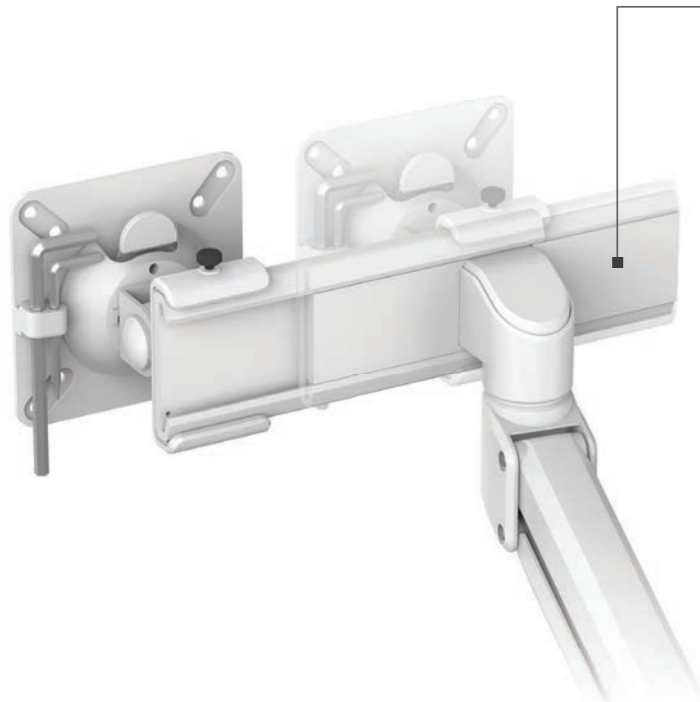


# TALLO™ & TALLO MODULAR™ FEATURES

Combines a distinctive design, intuitive movement and ergonomic excellence to deliver a superior experience to those who care about health and wellbeing in the workplace. Find the ultimate solution for your workspace from a comprehensive range of fixed or dynamic configurations and colours.

## Slider

Uniquely designed to provide seamless monitor alignment without taking up valuable desk space



Without Slider



With Slider

## Cable Management

Cleverly designed cable management to conceal unsightly cables and keep your workspace tangle free



## Quick Release VESA Plate

Enables fast and easy set-up



Ideal for screen sharing  
360° arm swivel with 180° lock out feature

## Easy attachment

Simple to install grommet or clamp mount options included



Clamp

Grommet



# THE TALLO™ RANGE

Ultimate flexibility for single and dual screen set ups. The Tallo™ monitor arms gas spring technology provides effortless height and depth adjustability and enhances collaborative working.



	Tallo™ Single	Tallo™ Dual	Tallo™ Dual Compact
Item Number	Silver: 8613001	Silver: 8613101	Silver: 8613201
	Black: 8614301	Black: 8614401	Black: 8614501
	White: 8614601	White: 8614701	White: 8614801
Product Dimensions (H x W x D)	13 x 37.5 x 32cm	15 x 66 x 32cm	14.5 x 57 x 43cm
Product Weight	3.6kg	5.8kg	6.9kg
Height Adjustment Range	178 - 500mm	178 - 500mm	0 - 482mm
Dynamic Height Adjustability	322mm		
Reach Range	74mm - 619mm	120mm - 667mm	120mm - 446mm
Rotation	+/-90°		
Pan	+/-90°		
Tilt	+75° / -35°	+/-60°	+/-60°
Arm Swivel	360° / 180° Lockout feature		
VESA	75 & 100		
Desk Compatibility	Desk Thickness: 0 - 45mm / Grommet Size: 10 - 80mm		
Weight Capacity (kg)	1 - 9kg		
Maximum Monitor Size	-	40" (101.6cm) diagonal / 442 x 1000mm (w x h)	27" (68.58) diagonal / 1058 x 964mm (w x h)
Warranty	15 years		



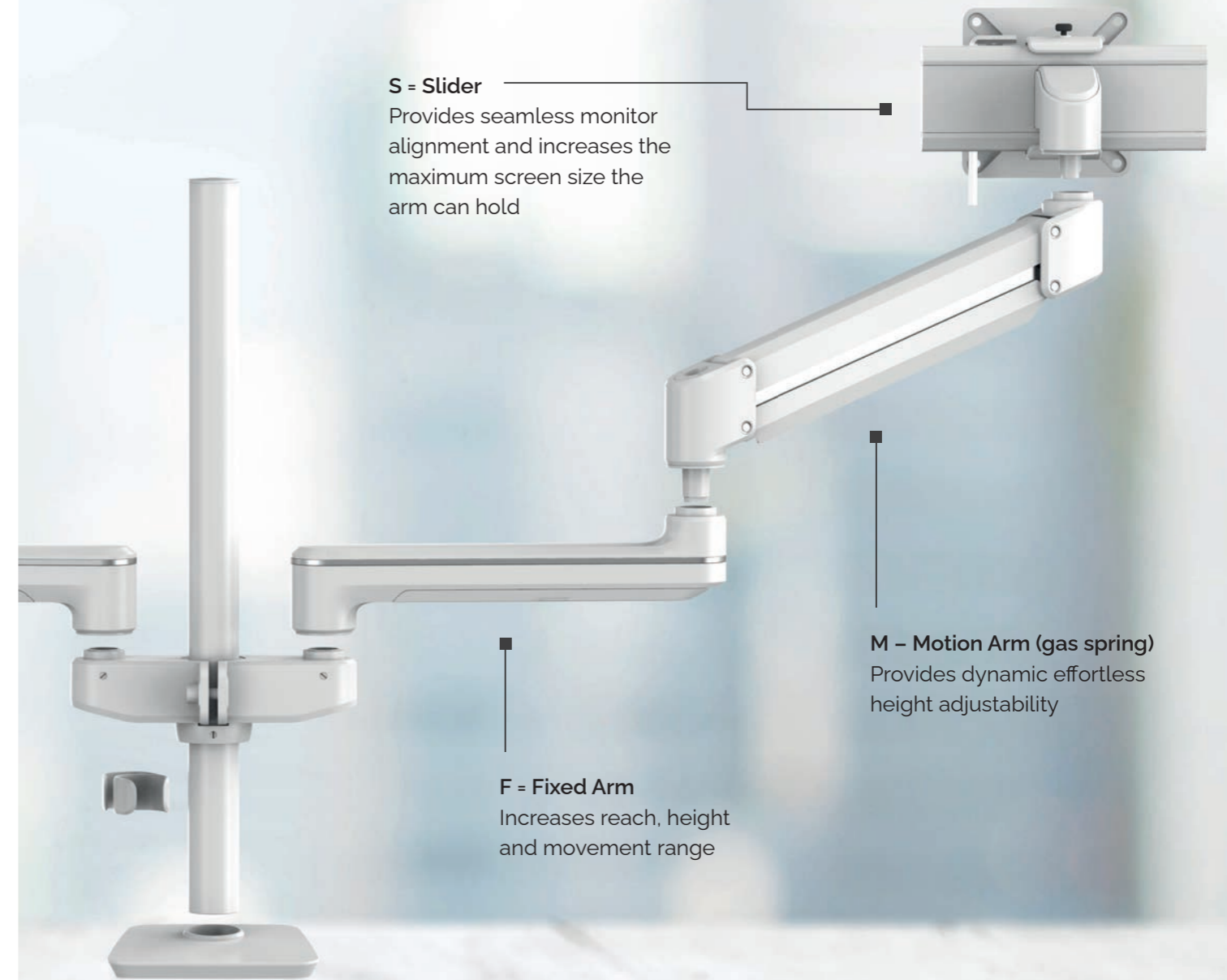
Tested by FIRA International Ltd to comply with the ergonomic requirements set out in European Health and Safety Legislation: EN ISO 9241-5

# TALLO MODULAR™ HOW IT WORKS

Choose a configuration to suit your needs from a mixture of fixed and gas spring arm options.

Fixed arms provide additional reach and movement as well as being a cost effective solution, where regular height adjustment is not required. Motion arms deliver effortless gas spring height adjustment, great for hot desking and collaborative working.

Sliders allow you to increase the size of screens an arm can hold whilst enabling you to place screens seamlessly side by side. This helps to save valuable desk space and maintain an ergonomic working position.



**S = Slider**  
Provides seamless monitor alignment and increases the maximum screen size the arm can hold

**M – Motion Arm (gas spring)**  
Provides dynamic effortless height adjustability

**F = Fixed Arm**  
Increases reach, height and movement range

# THE TALLO MODULAR™ RANGE

A stylish, elegant and versatile design that blends in with any environment. Find the most suitable configuration for multi-display users with options for fixed or motion (gas spring arms) depending on your requirements for height and depth adjustment.

## SINGLE CONFIGURATIONS



Tallo Modular™ 1F	
White	8615901
Black	8614901
Silver	8613301



Tallo Modular™ 1FF	
White	8616001
Black	8615001
Silver	8613401



Tallo Modular™ 1M	
White	8616201
Black	8615201
Silver	8613601



Tallo Modular™ 1FM	
White	8616101
Black	8615101
Silver	8613501

## DUAL CONFIGURATIONS



Tallo Modular™ 2FS	
White	8616301
Black	8615301
Silver	8613701



Tallo Modular™ 2FFS	
White	8616401
Black	8615401
Silver	8613801



Tallo Modular™ 2MS	
White	8616601
Black	8615601
Silver	8614001



Tallo Modular™ 2FMS	
White	8616501
Black	8615501
Silver	8613901

## TRIPLE CONFIGURATIONS



Tallo Modular™ 3FFS	
White	8616701
Black	8615701
Silver	8614101



Tallo Modular™ 3FMS	
White	8616801
Black	8615801
Silver	8614201



	1F	1FF	1M	1FM	2FS	2FFS	2MS	2FMS	3FFS	3FMS
<b>Product Dimensions (H x W x D)</b>	10 x 55 x 25cm	10 x 54 x 31.2cm	10 x 50.5 x 14cm	10 x 55.5 x 32cm	16 x 55 x 25.5cm	15.5 x 61 x 37.4cm	15 x 66 x 32cm	15.5 x 62 x 36.5cm	15.5 x 61 x 37.4cm	15.5 x 62 x 36.5cm
<b>Product Weight</b>	3.3kg	4kg	3.7kg	4.4kg	5.7kg	8.3kg	4.6kg	7.9kg	7.3kg	9.6kg
<b>Height Adjustment Range</b>	166 - 603mm	250 - 673mm	0 - 772mm	0 - 852mm	188 - 623mm	250 - 673mm	0 - 791mm	0 - 871mm	267 - 524mm	267 - 524mm
<b>Dynamic Height Adjustability</b>	-	-	322mm	322mm	-	-	322mm	322mm	-	322mm
<b>Pole Height</b>	510mm									
<b>Reach Range</b>	74 - 373mm	74 - 628mm	74 - 432mm	74 - 687mm	120 - 450mm	120 - 705mm	120 - 446mm	120 - 764mm	120 - 705mm	120 - 764mm
<b>Rotation</b>	+/- 90°									
<b>Pan</b>	+/- 90°									
<b>Tilt</b>	+ 75° / - 35°					+ / - 60°				
<b>Arm Swivel</b>	270°	270°	270°	270°	270° / 180° Lockout feature	270° / 180° Lockout feature	270° / 180° Lockout feature	270° / 180° Lockout feature	270° / 180° Lockout feature	270° / 180° Lockout feature
<b>VESA</b>	75 x 75 / 100 x 100									
<b>Desk Thickness</b>	0 - 45mm								10 - 85mm	
<b>Grommet Size</b>	10 - 80mm									
<b>Tension Adjustments</b>	No	No	Yes	Yes	No	No	Yes	Yes	No	Yes
<b>Weight Capacity (kg)</b>	1 - 9 kg									
<b>Maximum Monitor Size</b>	-	-	-	-	32" (81.28cm) / 94 x 124.6 cm (h x w)	40" (101.6cm) / 145 x 134.6cm	32" (81.28cm) / 102.6 x 158.2cm	40" (101.6cm) / 153.6 x 174.2cm	32" (81.28cm) / 72.5 x 102.4cm	27" (68.58cm) / 78.4 x 102.4cm
<b>Warranty</b>	15 years									



Tested by FIRA International Ltd to comply with the ergonomic requirements set out in European Health and Safety Legislation: EN ISO 9241-5



# EPPA™ MONITOR ARMS

Design around you and the way you work. The smoothest gas spring adjustment experience.



## TALLO™ FLEXCHARGE HUB

Stay powered and productive with the easily accessible charging hub designed to seamlessly integrate with all Tallo™ and Tallo Modular™ monitor arms. Features Qi wireless charging pad and easy access fast charging USB ports.



	White	Black	Silver
Item Number	7502501 (UK) 7502601 (EU)	7502901 (UK) 7503001 (EU)	7503301 (UK) 7503401 (EU)
Product Dimensions (H x W x D)	3.1 x 16.7 x 21.95cm		
Product Weight	0.4536kg		
Power consumption	12v, 3A		
USB Connectivity	1 x USB Port (Type A) Quick Charge 5V - 12V, 2.4A 1 x USB Port (Type C) Quick Charge 5V - 12V, 2.4A		
Wireless charging	Qi compatible smartphone only 5V, 2A, 10 Watts		
Warranty	5 years		

# EPPA™ FEATURES

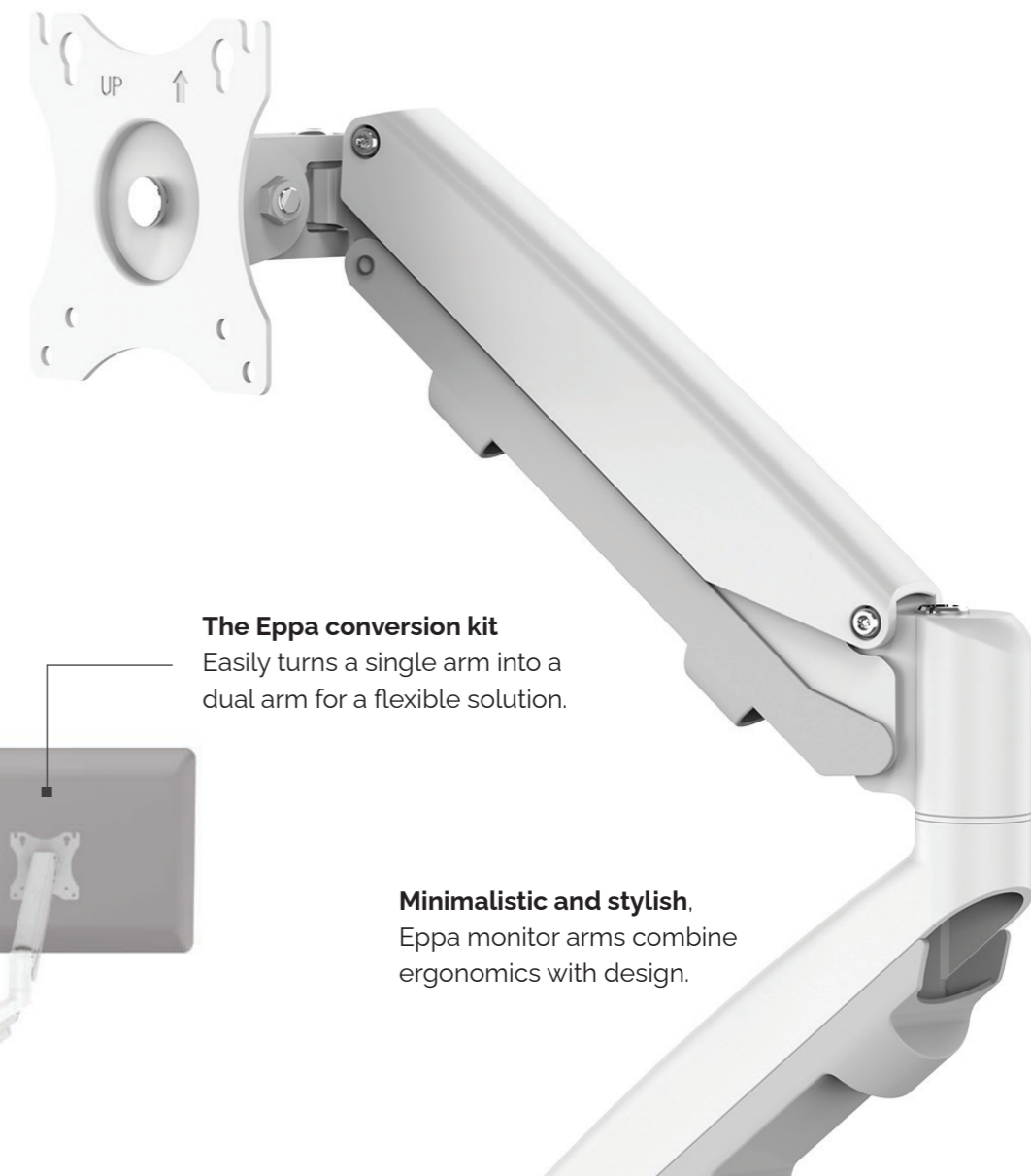
Eppa™ monitor arms have been designed to facilitate the perfect screen positioning, perfect for hot desking and collaboration. With smooth and effortless finger touch adjustment, and a stylish and minimalistic design, Eppa monitor arms seamlessly blend into any workspace.

## Effortless finger touch adjustment

Perfect for hot desking and collaborative working.



**Keep a clutter free workstation**  
With the intuitive cable management.



**The Eppa conversion kit**  
Easily turns a single arm into a dual arm for a flexible solution.

**Minimalistic and stylish.**  
Eppa monitor arms combine ergonomics with design.



**Blending into any environment**  
Available in 3 different colours.



# THE EPPA™ RANGE



	Eppa™ Single	Eppa™ Dual	Eppa™ Dual Kit
Item Number	White 9683201	White 9683501	White 9683801
	Black 9683101	Black 9683401	Black 9683601
	Silver 9683001	Silver 9683301	Silver 9683701
Product Dimensions (H x W x D)	480 x 117 x 565mm	480 x 1000 x 565mm	480 x 117 x 565mm
Product Weight	2.99kg	5.1kg	3.22kg
Height Adjustment Range	266mm		
Height Adjustment Measurements	140 - 406mm		
Reach Range	102 - 538mm		
Rotation	360°		
Pan	180°		
Tilt	+/- 90°		
Arm Swivel	360°		
VESA Compliant	75 x 75   100 x 100		
Desk Compatibility	Desk Thickness: 10 - 85mm   Grommet Size: 8 - 82mm		
Tension Adjustments	Yes		
Weight Capacity (kg)	1 - 8kg		
Maximum Monitor Size	39" / 99.06cm left to right		
Warranty	5 years limited		

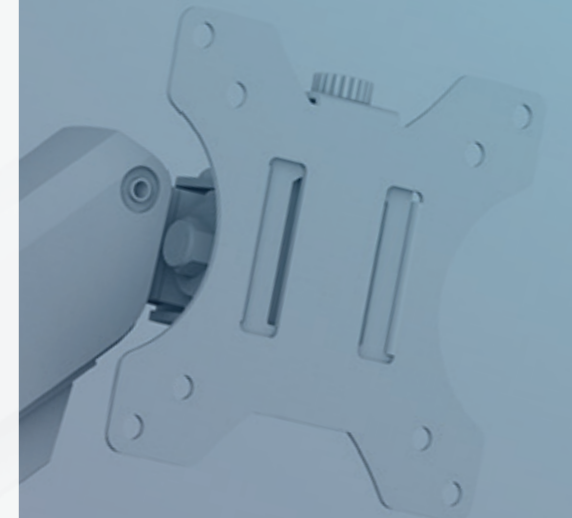


Tested by FIRA International Ltd to comply with the ergonomic requirements set out in European Health and Safety Legislation: EN ISO 9241-5



## PLATINUM SERIES MONITOR ARMS

View work differently by experiencing the benefits of gas spring adjustment and integrated USB connectivity.



# PLATINUM SERIES FEATURES

Enjoy a healthier working position and enhance productivity with Platinum Series monitor arms. Created to enhance desk users experience with their screens. The range offers effortless height and depth adjustments, as well as remarkable convenience with easy to reach access to USB connectivity.



**Ideal for desks with multiple users**  
Effortless monitor adjustment and collaborative working/sharing.



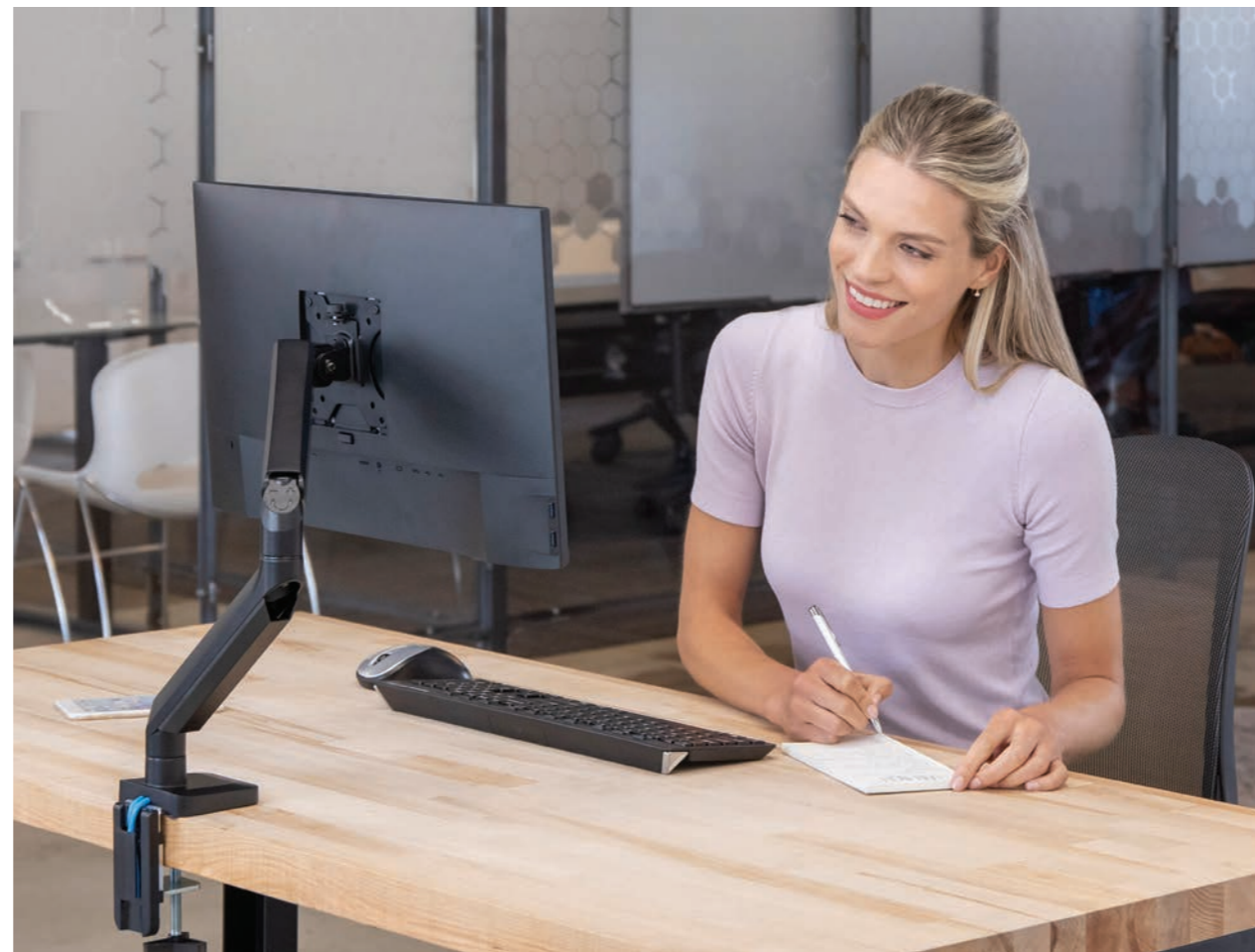
**Multiple configurations to suit all users' requirements.**  
Single, dual, dual stacking and triple.

## Easy to mount

Use the grommet or clamp options depending on your set-up.



**Keep a clutter free workstation**  
with the intuitive cable management.



**Built in USB 3.0 connectivity**  
(charging and data ports) making it easy to stay connected to your favorite devices.

## THE PLATINUM SERIES RANGE



	Single	Dual	Dual Stacking	Triple
Item Number	Black 8043301	Black 8042501	Black 8043401	Black 8042601
	White 8056201	White 8056301	-	-
	Silver 8056401	Silver 8056501	-	-
Product Dimensions (H x W x D)	590 x 114 x 495mm	590 x 114 x 495mm	750 x 115 x 1008mm	750 x 125 x 1275mm
Product Weight	2.43kg	4.1kg	4.8kg	6kg
Height Adjustment Range	280mm	280mm	620mm	280mm
Height Adjustment Measurements	135 - 415mm	135 - 415mm	90 - 710mm	155 - 435mm
Pole Height	-	-	458mm	458mm
Reach Range	63.5 - 505mm	63.5 - 505mm	63.5 - 520mm	63.5 - 705mm
Rotation	360°			
Pan	180°			
Tilt	+/- 45°			
Arm Swivel	360°			
VESA	75 x 75 / 100 x 100			
Desk Compatibility	Desk Thickness: 10 - 85mm / Grommet Size: 8.5 - 70mm			
Tension Adjustments	Yes			
USB Connectivity	2 x 3.0 USB Port 0.5A (Type A)			
Weight Capacity	1.5 - 8kg	1.5 - 8kg per arm	1.5 - 8kg per arm	1.5 - 7kgs per arm
Maximum Monitor Size	32" ( 81.28cm)	32" ( 81.28cm)	32" ( 81.28cm)	27" (68.5cm)
Warranty	3 years limited			



Tested by FIRA International Ltd to comply with the ergonomic requirements set out in European Health and Safety Legislation: EN ISO 9241-5

**Fellowes**

## PROFESSIONAL SERIES MONITOR ARMS

The practical choice combining freestanding and pole mounted arms to ergonomically position your monitors and free up desk space.



## PROFESSIONAL SERIES FEATURES

Elevate your screen to increase valuable space and reduce eye, neck and shoulder strain. Freestanding design helps in those spaces that clamp or grommet may not be an option.

### Freestanding design

The easiest set up and ready to use solution.



**Multiple configurations to suit all users' requirements:**  
Single, dual, dual stacking and option for laptop users.



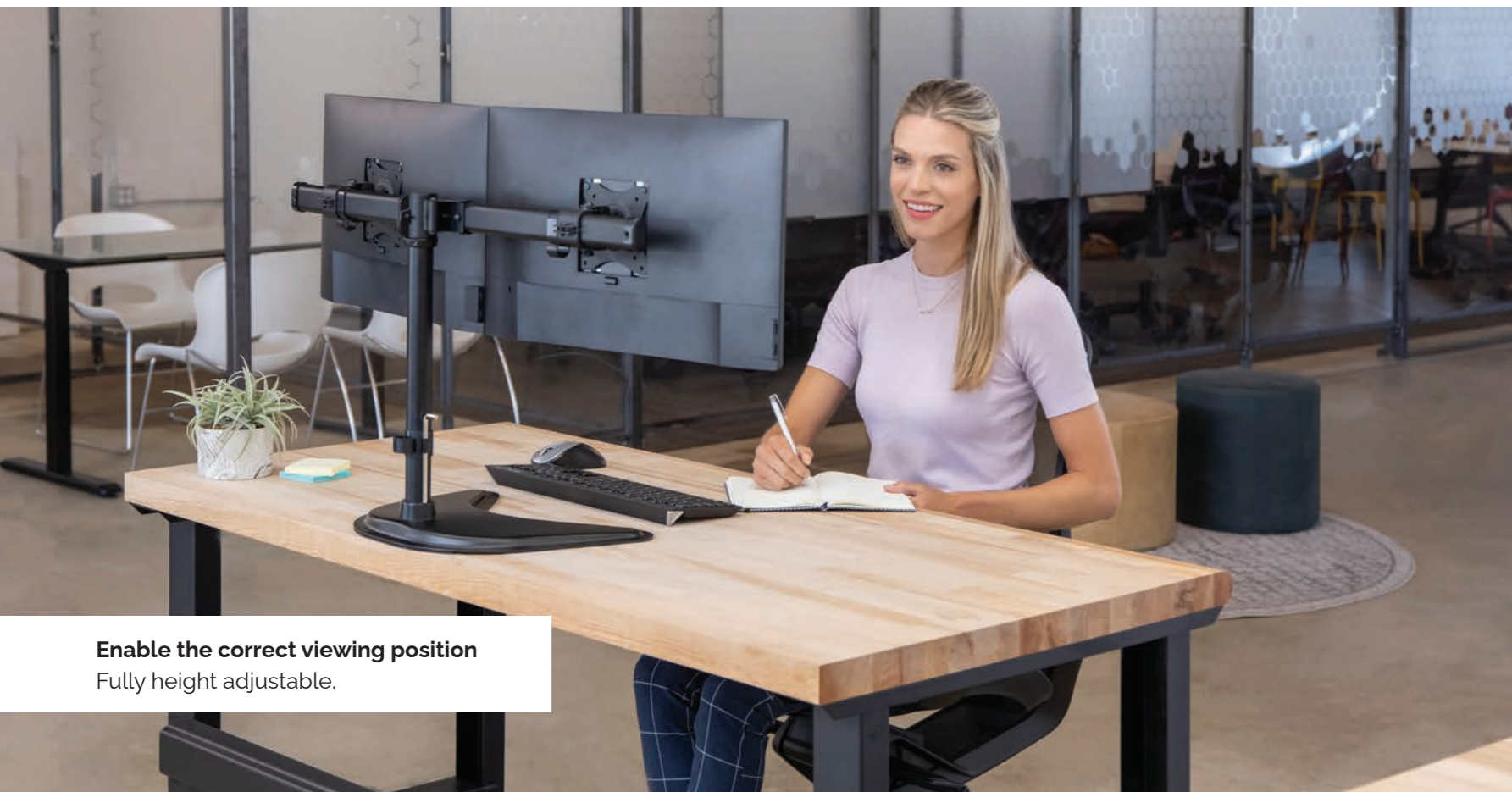
### Enable the correct viewing position

Fully height and depth adjustable.



### Easy to mount

Choose your preferred option between the clamp and grommet.



### Enable the correct viewing position

Fully height adjustable.

### Laptop arm accessory

Attach your laptop to a Professional Series monitor arm to increase desk space and position your laptop ergonomically, reducing eye, neck and shoulder strain



\* Only for use with Professional Series (clamp / grommet) Monitor Arms 8041601/8041701.

# THE PROFESSIONAL SERIES RANGE



Tested by FIRA International Ltd to comply with the ergonomic requirements set out in European Health and Safety Legislation: EN ISO 9241-5



	Single Freestanding	Dual Freestanding	Dual Stacking Freestanding
Item Number	8049601	8043701	8044001
Product Dimensions (H x W x D)	465 x 390 x 280mm	465 x 805 x 316mm	902 x 389 x 279mm
Product Weight	2.7kgs	4.87kgs	4.08kgs
Maximum Height	465mm	465mm	905mm
Rotation	360°		
Pan	120°		
Tilt	+/- 45°	+/- 30°	+/- 45°
VESA	75 x 75 / 100 x 100		
Weight Capacity	8kgs	8kgs per arm	8kg per arm
Maximum Monitor Size	32" ( 81.28cm)	27" (68.5cm)	32" ( 81.28cm)
Warranty	3 years limited		



	Single	Dual
Item Number	8041601	8041701
Product Dimensions (H x W x D)	533 x 111 x 610mm	559 x 111 x 984mm
Product Weight	3.43kg	4.58kg
Maximum Height	420mm	
Reach Range	690mm	
Rotation	360°	
Pan	180°	
Tilt	+/- 37°	
VESA	75 x 75 / 100 x 100	
Desk Compatibility	Desk Thickness: 25 - 76mm	
Weight Capacity (kg)	10kg	10kg per arm
Maximum Monitor Size	32" ( 81.28cm)	26" ( 66.04cm)
Warranty	3 years limited	



\* Only for use with Professional Series (clamp /grommet) Monitor Arms 8041601/8041701.

	Laptop Arm Accessory
Item Number	8211901
Product Dimensions (H x W x D)	85 x 330 x 320mm
Product Weight	2.30kg
Weight Capacity (kg)	4.5kg
Maximum Laptop Size	17" ( 43.18cm)
Warranty	3 years limited

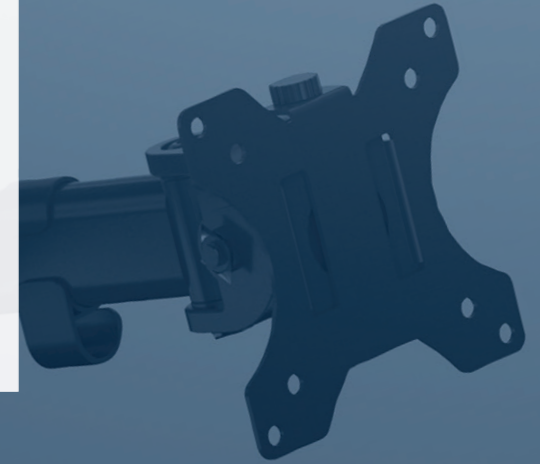


Tested by FIRA International Ltd to comply with the ergonomic requirements set out in European Health and Safety Legislation: EN ISO 9241-5



## REFLEX MONITOR ARMS

The entry-level range to ergonomically position your monitors and free up desk space.



## REFLEX FEATURES

Elevate your screen to maximise desk space and reduce eye, neck and shoulder strain. The Reflex basic design offers height and depth adjustability while meeting the needs of modest budgets.



**Easy to mount**  
Desk clamp and grommet mount included for secure and easy attachment options.



**Cable Management**  
Integrated to keep your workspace clutter free.



## THE REFLEX RANGE



	Reflex Single	Reflex Dual
Item Number	<b>Black:</b> 8502501	<b>Black:</b> 8502601
Product Dimensions (H x W x D)	550 x 116 x 490mm	550 x 116 x 726mm
Product Weight	3kg	4.2kg
Maximum Height	450mm	
Reach Range	63.5 - 422mm	63.5 - 387mm
Rotation	360°	
Pan	180°	
Tilt	+/- 45°	
Arm Swivel	180°	
VESA	75 x 75 / 100 x 100	
Desk Compatibility	Desk Thickness: 10 - 88mm   Grommet Size: 10.5 - 70mm	
Weight Capacity (kg)	8kg	8kg per arm
Maximum Monitor Size	32" ( 81.28cm)	27" (68.5cm)
Warranty	3 years limited	



Tested by FIRA International Ltd to comply with the ergonomic requirements set out in European Health and Safety Legislation: EN ISO 9241-5

**Fellowes**

## WALL MOUNT MONITOR ARMS

Securely mount screens and TVs to the wall.





## A SOLUTION FOR LAPTOP USERS



## THE WALL MOUNT RANGE



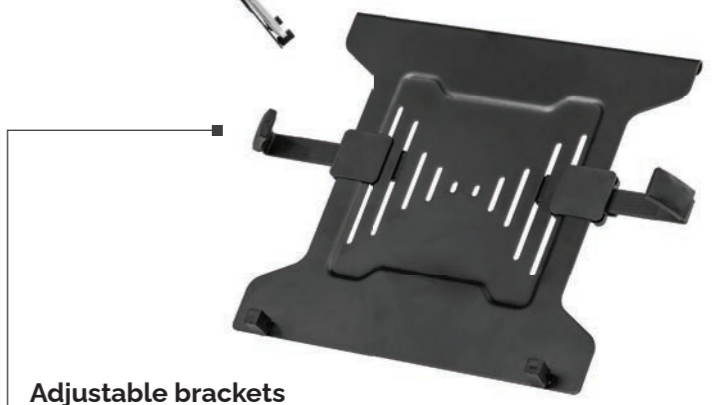
	Single Wall Mount Arm	Full Motion Wall Mount Arm
<b>Item Number</b>	<b>Black:</b> 8043501	<b>Black:</b> 8043601
<b>Product Dimensions (H x W x D)</b>	478 x 225 x 514mm	454 x 413 x 502mm
<b>Product Weight</b>	3.54kg	2.72kg
<b>Height Adjustment Range</b>	282mm	-
<b>Reach Range</b>	495mm	495mm
<b>Rotation</b>	+/- 3°	360°
<b>Pan</b>	+/- 90°	+/- 90°
<b>Tilt</b>	+5°/-15°	+2°/-12°
<b>Arm Swivel</b>	180°	180°
<b>VESA</b>	75 x 75 / 100 x 100 / 200 x 200 / 200 x 100	100 x 100 / 100 x 150 / 200 x 100 / 200 x 200 / 300 x 300 / 300 x 200 / 400 x 400 / 400 x 300 / 400 x 200
<b>Weight Capacity (kg)</b>	5 - 30kg	34.9kg
<b>Maximum Monitor Size</b>	20" - 42" (50.8 - 106.68cm)	23" - 55" (58.42 - 139.7cm)
<b>Warranty</b>	3 years limited	3 years limited

### Laptop Arm Accessory

Attach your laptop to a monitor arm to increase desk space and position your laptop ergonomically, reducing eye, neck and shoulder strain



	Laptop Arm Accessory
<b>Code</b>	<b>Black:</b> 8044101
<b>Colour</b>	Black:
<b>Product Dimensions (H x W x D)</b>	279.4 x 442.9 x 65.1mm
<b>Product Weight</b>	1.18kg
<b>Weight Capacity (kg)</b>	4.5kg
<b>Maximum Laptop Size</b>	17" ( 43.18cm)
<b>VESA</b>	75 x 75 / 100 x 100
<b>Warranty</b>	3 years limited



**Adjustable brackets**  
keep your laptop secure

Compatible with all Fellowes monitor arms excluding the Professional Series Clamp monitor arms (8041601/8041701).



Tested by FIRA International Ltd to comply with the ergonomic requirements set out in European Health and Safety Legislation: EN ISO 9241-5

# WE ARE GLOBAL

Inspiring workspaces since 1917.

[fellowes.com/locations](https://fellowes.com/locations) | 0080018101810



**Fellowes**  
Brands.

FAMILY BUSINESS  
SINCE 1917