

Integreater® for the cheese sector: Grading Application

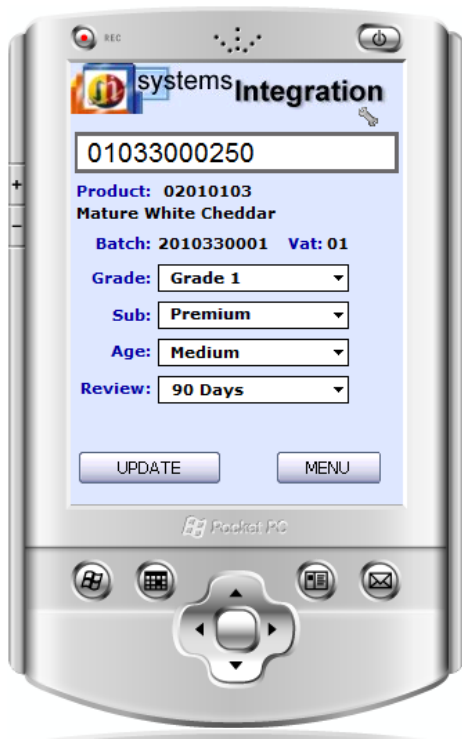
Integreater® is revolutionising the way that grading data is captured and stored, meaning that operators can easily access information on batches or specific products, wherever they are located.

The application has been designed to enable cheese processors to quickly and easily record grading information through the use of portable, hand-held data capture devices.

The use of electronic data capture ensures complete visibility and traceability. It also improves the accuracy of information by considerably reducing the chance of error that is posed by paper based records (illegible handwriting, records getting damaged etc).

How it works...

In order to access grading data, operators are prompted to scan the barcode of the product that they are working on. This will display the product code and description, along with the original batch number and current settings for grade, sub-grade and age. The next review date is also listed and operators are able to view product history right the way back to culture.



If any changes need to be made, all products in that batch will be automatically updated with this information. When an item is re-graded, Integreater® changes all the product codes in the batch accordingly, eg: from mild to mature. This saves time and reduces the chance of mistakes, as each time data is re-keyed, the risk of error increases.

Of course, there are circumstances when automatic updates are inappropriate. In these situations, authorised staff have the option to manually edit information.

To minimise the chance of error when recording grading data, category options are limited to be relevant to the product in question. For example, the choices that are available to be selected for the grade, sub grade and age of Cheddar cheese will be different to those that are available for Stilton.

As well as speeding up the data entry process, Integreater® enables operators to quickly and easily access information. Data can be found within seconds at the click of a button, removing the need to trawl through reams of paper work.

Easy Reporting

Reporting is simple – all management have to do is identify who they would like to receive which particular report, when and how often. For example, you may want to know which products are due for inspection in the following week, or if there are any overdue items.

The grading application can then be configured so that the necessary reports are automatically generated and emailed to the relevant people. Reports include any previously entered QA and grading information and can also be produced on demand if necessary.

Stock Valuation

As well as providing an up to date view of stock levels, Integreater® enables management to quickly and easily assess the value of their stock as it is graded. This is achieved by identifying any variances, stock anomalies and rejections against the standard cost.

About Systems Integration

Systems Integration are a leading supplier of software and hardware for the food processing industry. With nearly 20 years of experience working for this sector, we have customers in the UK, Canada and the USA.

Our team are experienced in managing food processing operations and a number of our senior employees have worked in production, despatch and QA management. As a result, we understand customer needs and focus on creating easy to use solutions for complex problems.

Systems Integration only supply solutions to food processing businesses and are the sole providers of **Integreater®** worldwide.

About Integreater®

Integreater® is an enterprise manufacturing execution system, also known as an **e-MES**. It might sound complicated, but has actually been designed to make life a lot easier for food processing businesses.

The unique solution works by ensuring that management have the visibility to achieve greater accuracy, efficiency and traceability. It effectively holds a magnifying glass up to the processing cycle, so that management can see exactly what's going on and identify where they need to make improvements.

Integreater® is a complete software and hardware system, but its modular design means that businesses don't have to buy it all in one go. It can integrate with third party solutions and has been designed to solve a range of production problems.

Integreater® is easy for everyone to use – from staff on the factory floor, right up to the boardroom. Food processors simply tell us what data they want to measure and we configure the **e-MES** to do all the hard work. It will then provide operators with the information they need, when they need it, in a way they'll understand.

Integreater® is a flexible solution that has been designed to adapt as a business grows, customer demands change and legislation gets tougher. It features 23 modules including:

Performance & Improvement

- business analysis
- OEE
- KPIs
- bench marking
- dashboard

Planning & Management

- stock & order
- available to sell
- production planning
- packaging wastage
- dry goods management
- yield manager
- forecasting

Customer Relationships

- margin manager
- cost modelling
- QA control

Production Control

- sales order processing
- purchase order processing
- livestock suite
- outer case marker
- production tracker
- production monitoring
- despatch & tracker
- stock & tracker