

QA control - Tracesoft

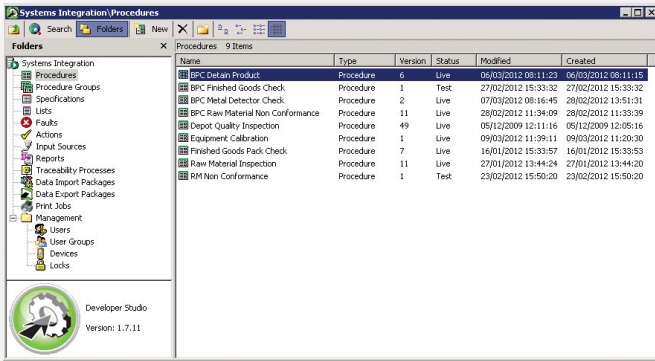
Overview

Imagine having the ability to electronically capture data which is currently recorded by pen and paper. Investing in this type of technology not only saves time, but also improves accuracy.

In general, QA departments tend to be largely paper based in their approach to data collection. With Tracesoft, most forms can be translated into an electronic 'procedure', where a device will prompt the operator with a series of questions. These questions may be answered by selecting an item from a list, scanning a barcode, capturing a weight from a scale or by typing a number. Data can then be evaluated and validated to avoid entries which are out of scope. The need to re-key data into multiple spreadsheets is also removed.

Procedures

Procedures can be written 'in-house', which means that should you have new data to collect and analyse, a procedure can be quickly developed and released to specific users. The new data can then be captured and reported upon.



Procedures can also be grouped into sets, set as 'timed' and assigned to specific users or user groups.

Responses to questions within procedures can be set to come from numerous sources, including operator entry, lists, specifications and buttons. Tracesoft can also work with data capture from external devices, such as weights from scales and barcode decoding from a connected or built-in scanner.

Procedure questions can generate immediate 'non-conformances', which will automatically highlight any recorded result that falls outside the set parameters. Supervisor pin entry on non-conformance ensures that the relevant people are immediately made aware of any problems.

Capturing Data

Data can be captured using a variety of devices: touchscreens, laptops, tablet PCs, handheld scanners and PDAs. As soon as the procedure is complete, the results are transferred to the server wirelessly.



Tracesoft Benefits

- supports Right First Time methodology
- procedural based data collection
- multiple forms of input
- businesses can run timed procedures at set intervals
- immediate visibility of data
- requires supervisor engagement on non-conformance recording
- promotes accuracy
- data is made available throughout the business
- processors can release their own data capture procedures
- highlights non-conformances
- allows release of procedures at a specific date and time
- fast editing of procedures
- assign different procedures to different users
- allows photographs to be taken and associated with results
- removes the need to transpose data into spreadsheets
- procedure testing prior to release

Date/Time	Operator	Date	Metal_Detector	Ferrous_Check	Non Ferrous Check	Stainless_Steel_Check
2012-03-01 13:19:26	System Administrator	01/03/2012 13:19	2	Yes	Yes	Yes
2012-03-05 13:11:00	Andrew Houghton	05/03/2012 13:11	PCD	Yes	Yes	Yes
2012-03-05 13:12:41	Andrew Houghton	05/03/2012 13:12	PCD	Yes	Yes	No
2012-03-05 13:13:57	Andrew Houghton	05/03/2012 13:13	PCD	Yes	Yes	Yes
2012-03-05 15:27:44	Andrew Houghton	05/03/2012 15:27	PCD	Yes	Yes	Yes
2012-03-05 17:28:51	Andrew Houghton	05/03/2012 17:28	PCD	Yes	Yes	Yes
2012-03-05 17:29:27	Andrew Houghton	05/03/2012 17:29	PCD	Yes	Yes	Yes
2012-03-05 17:37:57	Andrew Houghton	05/03/2012 17:37	PCD	Yes	Yes	Yes
2012-03-06 00:51:00	Andrew Houghton	06/03/2012 00:51	PCD	Yes	Yes	Yes
2012-03-06 08:01:35	Andrew Houghton	06/03/2012 08:01	PCD	Yes	Yes	Yes
2012-03-06 10:00:46	Andrew Houghton	06/03/2012 10:00	PCD	Yes	Yes	Yes
2012-03-06 10:01:16	Andrew Houghton	06/03/2012 10:01	PCD	Yes	Yes	Yes
2012-03-06 10:01:30	Andrew Houghton	06/03/2012 10:01	PCD	Yes	Yes	No
2012-03-06 11:26:40	Jessica Hyde-Smith	06/03/2012 11:26	PCD	Yes	No	Yes
2012-03-06 11:41:30	Jessica Hyde-Smith	06/03/2012 11:41	PCD	Yes	Yes	Yes
2012-03-06 11:42:02	Jessica Hyde-Smith	06/03/2012 11:42	PCD	Yes	Yes	Yes
2012-03-07 09:01:31	Jessica Hyde-Smith	07/03/2012 09:01	PCD	Yes	Yes	Yes
2012-03-07 16:47:12	Andrew Houghton	07/03/2012 16:47	PCD	Yes	Yes	Yes
2012-03-08 10:58:16	Jessica Hyde-Smith	08/03/2012 10:58	PCD	Yes	No	Yes
2012-03-08 11:08:24	Makolyn Burrows	08/03/2012 11:08	PCD	Yes	Yes	Yes
2012-03-08 11:16:04	Jessica Hyde-Smith	08/03/2012 11:16	PCD	Yes	Yes	Yes
2012-03-08 11:30:13	Jessica Hyde-Smith	08/03/2012 11:30	PCD	Yes	No	Yes
2012-03-08 11:31:33	Jessica Hyde-Smith	08/03/2012 11:31	PCD	Yes	Yes	No
2012-03-08 14:54:21	Jessica Hyde-Smith	08/03/2012 14:54	PCD	Yes	Yes	Yes
2012-03-08 14:58:26	Jessica Hyde-Smith	08/03/2012 14:58	PCD	Yes	Yes	No
2012-03-08 18:14:37	Andrew Houghton	08/03/2012 18:14	PCD	Yes	Yes	Yes
2012-03-08 08:06:06	Andrew Houghton	09/03/2012 08:06	PCD	Yes	Yes	Yes
2012-03-08 09:33:36	Makolyn Burrows	09/03/2012 09:33	PCD	Yes	No	Yes
2012-03-08 09:57:41	Andrew Houghton	09/03/2012 09:57	PCD	Yes	Yes	Yes
2012-03-08 09:01:34	Jessica Hyde-Smith	09/03/2012 09:01	PCD	Yes	Yes	Yes
2012-03-08 09:58:46	Makolyn Burrows	09/03/2012 09:58	PCD	Yes	Yes	Yes
2012-03-08 09:58:58	Makolyn Burrows	09/03/2012 09:58	PCD	Yes	No	Yes
2012-03-08 09:58:56	Makolyn Burrows	09/03/2012 09:58	PCD	No	Yes	Yes

The results window showing non-conformances in red.



recalibrate your
profitability

integreater
food productivity systems

Systems Integration (Trading) Ltd

Lincoln House, Wellington Crescent, Fradley Park,
Lichfield, Staffordshire, WS13 8RZ
Tel: 01543 444555 Website: www.siltcd.co.uk

QA control - Tracesoft

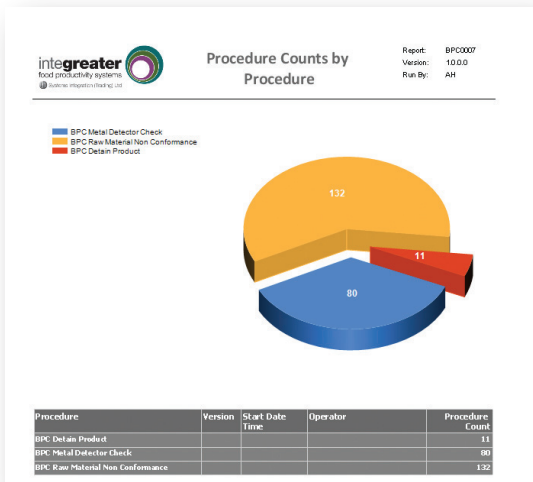
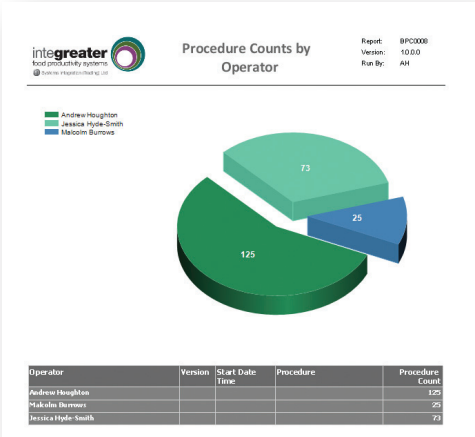
Reporting

In addition to being able to use the software to view tabular lists of data, your business can make use of SQL Reporting Services.

Datasets can be generated and then multiple reports built from the same set of results. This enables the data to be represented in different ways.

Charts can help to convey the meaning of the data quickly and the supporting data can also be shown.

Results can be grouped and collapsed initially, with controls displayed to allow the data to be expanded.



Hyperlinks can also be added to provide a drill down capability to underlying details

Reports may be scheduled to run at any time and results can be output to a variety of formats, including email. Tracesoft enables food processors to distribute key performance

indicators to management automatically, without the need for human supervision. This allows for the more effective use of labour resources.

Date	Product	Operator	Passed/Failed	Remarks
23/01/2012
23/01/2012
24/01/2012
25/01/2012
26/01/2012
27/01/2012
28/01/2012
29/01/2012
30/01/2012
31/01/2012
01/02/2012
02/02/2012
03/02/2012
04/02/2012
05/02/2012
06/02/2012
07/02/2012
08/02/2012
09/02/2012
10/02/2012
11/02/2012
12/02/2012
13/02/2012
14/02/2012
15/02/2012
16/02/2012
17/02/2012
18/02/2012
19/02/2012
20/02/2012
21/02/2012
22/02/2012
23/02/2012
24/02/2012
25/02/2012
26/02/2012
27/02/2012
28/02/2012
29/02/2012
30/02/2012
01/03/2012
02/03/2012
03/03/2012
04/03/2012
05/03/2012
06/03/2012
07/03/2012
08/03/2012
09/03/2012
10/03/2012
11/03/2012
12/03/2012
13/03/2012
14/03/2012
15/03/2012
16/03/2012
17/03/2012
18/03/2012
19/03/2012
20/03/2012
21/03/2012
22/03/2012
23/03/2012
24/03/2012
25/03/2012
26/03/2012
27/03/2012
28/03/2012
29/03/2012
30/03/2012
31/03/2012

Help with auditing...

With the right reports, responding to audit requests becomes a great deal faster and easier than it was before. No more sifting through filing cabinets, examining handwritten forms, deciphering handwriting and transposing the data into spreadsheets. Information can be collated, analysed and distributed at the click of a button.

recalibrate your profitability

Reporting Features

- SQL Reporting Services
- unattended report execution
- run through web browser
- export to multiple formats
- include multiple parameters
- report delivery to email
- auto refresh capability
- expression based field control

