

ISOframe[®] ***counters***

Tool-less counters, tables and podiums

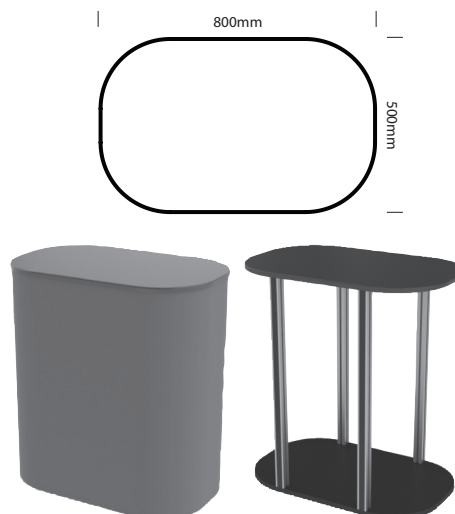


pure exhibitionism[™]

Free-standing Counters

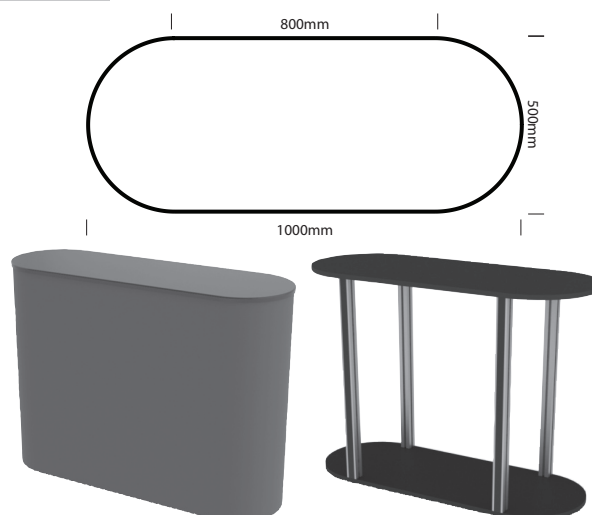
Free-standing Small Rectangular Counter 890mm Height

Code	Contents
IS-FT01	Free-standing Small Rectangular Counter
IS-FS01	Free-standing Small Rectangular Counter Shelf
IS-FC-01	Cable Port in table top <i>Please instruct required position</i>
IS-FB01	Carrying bag



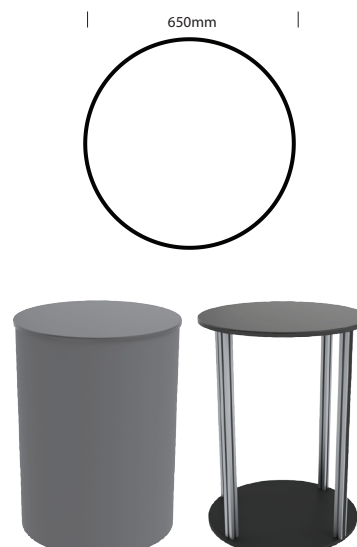
Free-standing Large Rectangular Counter 890mm Height

Code	Contents
IS-FT02	Free-standing Large Rectangular Counter
IS-FS02	Free-standing Large Rectangular Counter Shelf
IS-FC-01	Cable Port in table top <i>Please instruct required position</i>
IS-FB02	Carrying bag



Free-standing Circular Counter 890mm Height

Code	Contents
IS-FT03	Free-standing Circular Counter
IS-FS03	Free-standing Circular Counter Shelf
IS-FC-01	Cable Port in table top <i>Please instruct required position</i>
IS-FB03	Carrying bag



Free-standing Counters

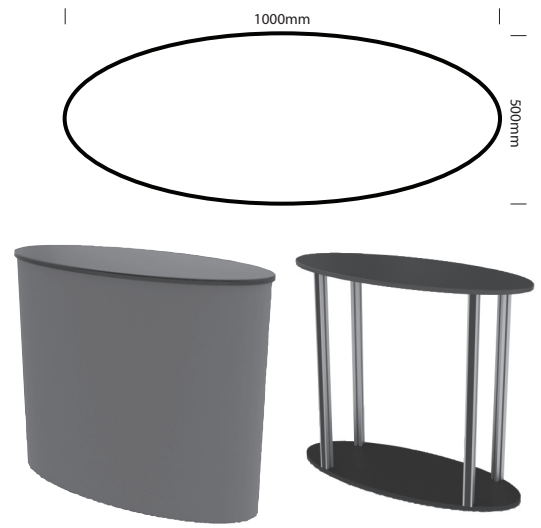
Free-standing Kidney Counter 890mm Height

Code	Contents
IS-FT04	Free-standing Kidney Counter
IS-FS04	Free-standing Kidney Counter Shelf
IS-FC-01	Cable Port in table top <i>Please instruct required position</i>
IS-FB04	Carrying bag



Free-standing Elipse Counter 890mm Height

Code	Contents
IS-FT05	Free-standing Elipse Counter
IS-FS05	Free-standing Elipse Counter Shelf
IS-FC-01	Cable Port in table top <i>Please instruct required position</i>
IS-FB05	Carrying bag

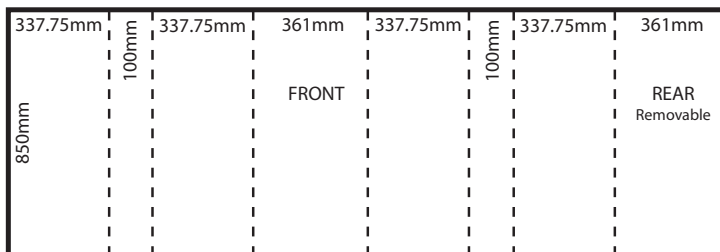


Free-standing Counter Graphic Wrap Sizes

Small Rectangular Counter Graphic Wrap 2273 mm x 850mm

Code

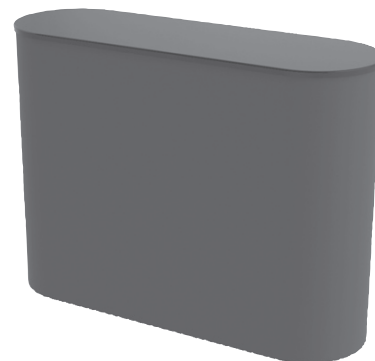
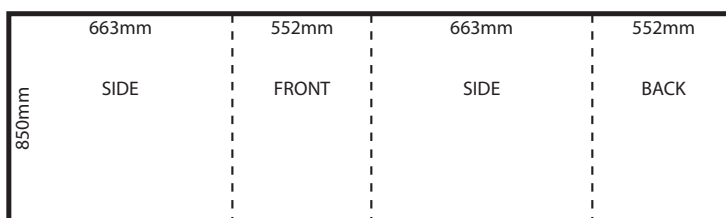
IS-GW01



Large Rectangular Counter Graphic Wrap 2430mm x 850mm

Code

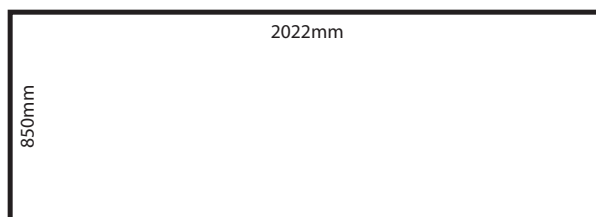
IS-GW02



Circular Counter Graphic Wrap 2022mm x 850mm

Code

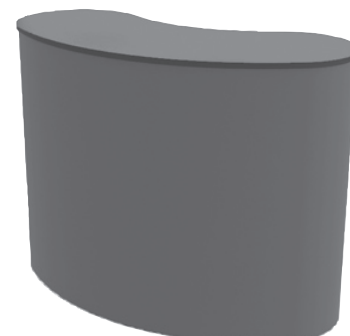
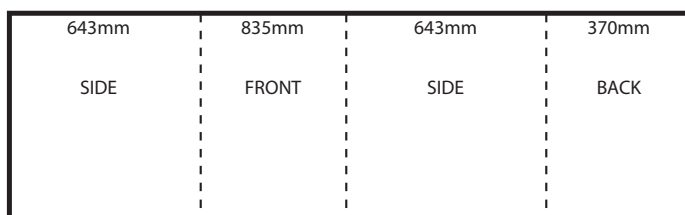
IS-GW03



Kidney Counter Graphic Wrap 2491mm x 850mm

Code

IS-GW04



Free-standing Table Graphic Wrap Sizes

Elipse Table Graphic Wrap

2398mm x 850mm

Code

IS-GW05

415	784	415	784
SIDE	FRONT	SIDE	BACK Removable
850mm			



Freestanding table assembly instructions

Parts

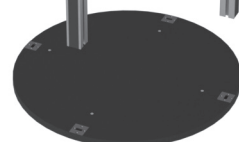
Table Top



Table Posts x4



Table base

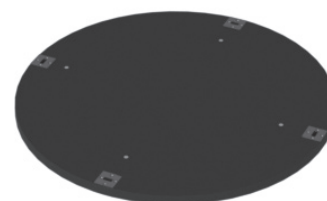


Optional internal shelf



Step 1

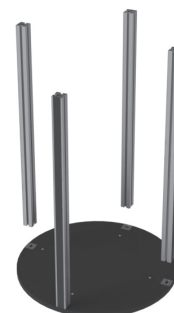
Place the table base on the floor and adjust feet to level off.



Step 2

Insert the table posts into the base. If the table has a removable back panel there will be 2 posts with magnetic tape applied to them. ensure these are next to each other around the back of the table and the tape is facing outwards. Close the clamps.

IMPORTANT if any resistance is felt when closing the clamp please re-position it as forcing the clamp closed will damage it.



Step 3

If you have an internal shelf lower this into position ensuring it is seated correctly on the pegs attached to the table posts.



Freestanding table assembly instructions

Step 4

Open the clamps on the top of the table posts.

Where possible have someone help you to lower the top onto the table posts.



Step 5

Close the clamps to attach the table top

IMPORTANT Ensure the table posts are all inside the plates on the underside of the table if any are not seated correctly it will put extra stress on the Fast clamps.

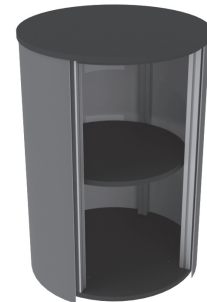


Step 6

Attach the table wrap starting at the back and to the right hand post with magnetic tape applied.

Roll the graphic around the table top ensuring the graphic is attached to the lip under the table top all the way around. If the graphic does not seat correctly try twisting the top clockwise or anti-clockwise this will bring the graphic into alignment.

Image shows open back graphic a small extra graphic will be used to finish off the wrap.



Step 7

If you have a removable back panel this will fit between the open ends of the graphic wrap.

