

FEATURES :

- Measures press fit loads on bearings
- Fits in limited or tight spaces
- Measures rolling mill loads
- Measures tie rod loads

The hollow load cells are available for compression only loads in capacities of 25K, 50K and 100K lbs., and for tension-compression loads in capacities of 5K, 10K and 20K lbs.

The precision design and manufacture of this versatile transducer style is the result of our extensive experience in both metal working industry and automotive applications.

**PERFORMANCE SPECS :
3336 AND 3632**

| SPECIFICATIONS | 3336 | 3632 |
|---|---------------|---------------|
| Output at rated capacity: <i>millivolts per volt, nominal</i> | ±2 | 2 |
| Nonlinearity: <i>of rated output</i> | ±0.25% | ±0.15% |
| Hysteresis: <i>of rated output</i> | ±0.15% | ±0.15% |
| Repeatability: <i>of rated output</i> | ±0.15% | ±0.15% |
| Zero balance: <i>of rated output</i> | ±1.0% | ±1.0% |
| Bridge resistance: <i>ohms nominal</i> | 350* or 700** | 480† or 240†† |
| Temperature range, compensated: °F | +70 to +170 | +70 to +170 |
| Temperature range, compensated: °C | +21 to +77 | +21 to +77 |
| Temperature range, usable: °F | -65 to +200 | -65 to +200 |
| Temperature range, usable: °C | -54 to +93 | -54 to +93 |
| Temperature effect on output: <i>of reading per °F</i> | ±0.002% | ±0.002% |
| Temperature effect on output: <i>of reading per °C</i> | ±0.0036% | ±0.0036% |
| Temperature effect on zero: <i>of rated output per °F</i> | ±0.002% | ±0.002% |
| Temperature effect on zero: <i>of rated output per °C</i> | ±0.0036% | ±0.0036% |
| Excitation voltage, maximum: <i>volts DC or AC rms</i> | 20 | 20 |
| Insulation resistance, bridge/case: <i>megohms at 50 VDC</i> | >5,000 | >5,000 |
| Number of bridges: | 1 or 2 | 1 |

*5K **10K and 20K †25K and 50K ††100K
Other capacities and configurations available; consult factory.

MODEL 3336

Tension and compression



Capacities available 5K, 10K and 20K lbs.

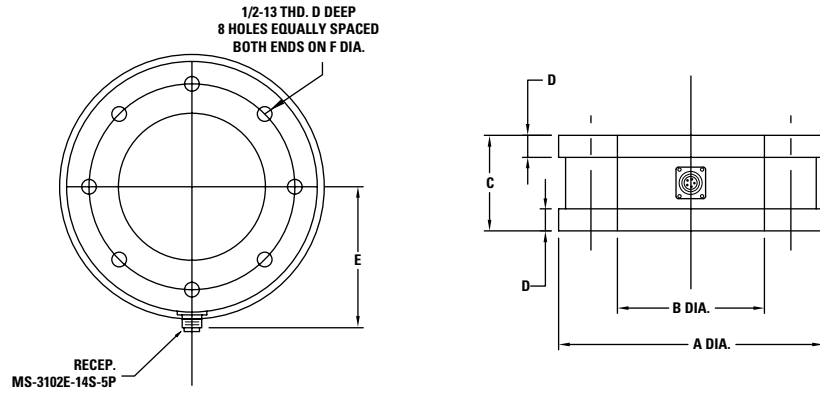
MODEL 3632



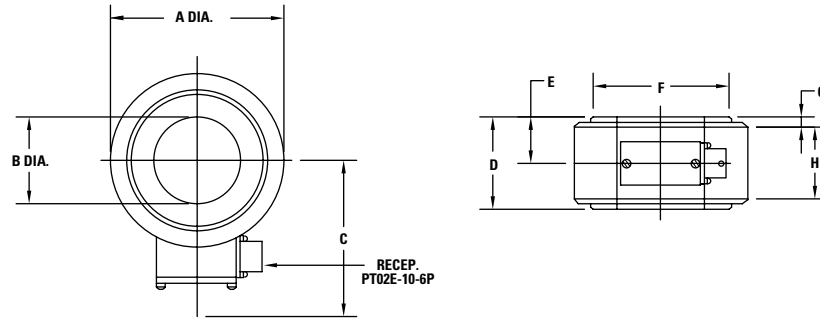
Capacities available 25K, 50K and 100K lbs.

**Consult factory
for specials.**

| 3336 | IN. | CM. |
|------|------|-------|
| A | 9 | 22.86 |
| B | 5 | 12.70 |
| C | 3.25 | 8.26 |
| D | 0.75 | 1.91 |
| E | 4.88 | 12.40 |
| F | 7 | 17.78 |



| 3632 | IN. | CM. |
|------|------|-------|
| A | 4 | 10.16 |
| B | 2 | 5.08 |
| C | 3 | 7.62 |
| D | 2 | 5.08 |
| E | 1 | 2.54 |
| F | 3.25 | 8.26 |
| G | 0.06 | 0.15 |
| H | 1.88 | 4.78 |



SENSOR CHARACTERISTICS : 3336 AND 3632

| MODEL NUMBER | NOMINAL LOAD LIMIT CAPACITY F _z | | STATIC OVERLOAD CAPACITY % OF NOM. CAPACITY | STATIC EXTRANEIOUS LOAD LIMITS | | | DEFLECTION AT NOM. LOAD LIMIT INCHES | RINGING FREQUENCY H _z |
|--------------|--|---------|---|---|---|----------------------------------|--------------------------------------|----------------------------------|
| | LBS. | NEWTONS | | SHEAR F _x OR F _y LBS. | BENDING M _x OR M _y LB. INCHES | TORQUE M _z LB. INCHES | | |
| 3336 | 5K | 20K | 150 | 550 | 12K | 1,850 | 0.005 | 1,100 |
| | 10K | 50K | 150 | 1,400 | 31K | 3,750 | 0.005 | 1,500 |
| | 20K | 100K | 150 | 2,650 | 62K | 14K | 0.005 | 2,200 |
| 3632 | 25K | 125K | 150 | 2,750 | 18K | 3K | 0.005 | 5,000 |
| | 50K | 200K | 150 | 5,500 | 36K | 13K | 0.005 | 7,000 |
| | 100K | 500K | 150 | 13K | 91K | 27K | 0.005 | 10,000 |

