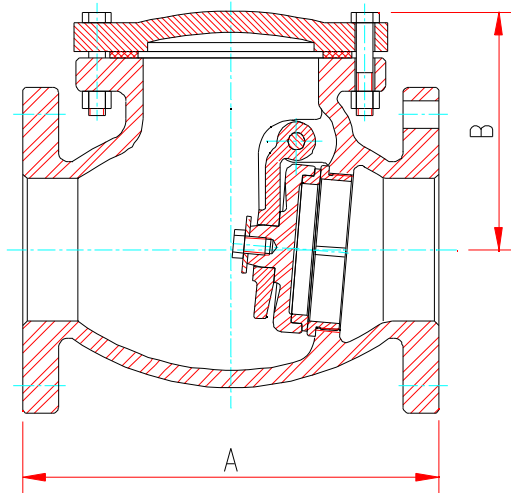


Figure Number

5101	Bronze Disc Ring
5102	EPDM Disc Ring
5103	NBR Disc Ring



Materials List

Part Name	Materials	EN Spec.	ASTM Spec.
Body*	Cast Iron	EN-JL1040	A126 Class B
Cover*	Cast Iron	EN-JL1040	A126 Class B
Side Plug	Brass	CuZn39Pb3	B16 C36000
Hanger Pin	Brass	CuZn39Pb3	B16 C36000
Hanger	Ductile Iron	EN-JS1050	A536 65-45-12
Disc	Cast Iron	EN-JL1040	A126 Class B
Disc Ring	Cast Bronze	EN1982 CC491K	B62 C83600
	EPDM/NBR	Commercial	Commercial
Seat Ring	Cast Bronze	EN1982 CC491K	B62 C83600
Gasket	SS+Graphite	Non-asbestos	Non-asbestos

Dimensions (mm)

Size	50	65	80	100	125	150	200
A	203	216	241	292	330	356	495
B	121	135	141	168	182	215	267

Size	250	300	350	400	450	500	600
A	622	699	787	914	914	1016	1219
B	305	343	450	520	550	590	680

Notes

1. Designed in accordance with EN 12334, BS 5153 or MSS SP-71.
2. Flanges conform to EN1092-2 PN10 / 16 or ANSI 125. Other flange types are available.
3. Design & materials are subject to change without notice.

*4. Valves can be rated at PN25 / Class250, but the body & bonnet material should be changed to ductile iron ASTM A536 Gr. 65-45-12.